

10-APR-2014

**ECN-LCEN**

1-10

**AOI****AOI****GENERAL****ATS Hours**

H24

**Airport Information**

**RFF:** CAT 7, RWY foaming not AVBL.  
**PCN:** RWY 11/29: 80 F/C/X/T.

**Warnings**

Do not violate the border during HLDG, APCH or missed APCH.

**ECN VOR/DME** unusable:  
 R090-R105 beyond 15NM  
 R106-R125 beyond 10NM  
 R126-R300

**IECR ILS/DME RWY 29** unusable:  
 outside 10° left side of LLZ centerline  
 beyond 11NM of LLZ antenna for CAT I OPS.

**ARRIVAL****Speed**

MAX IAS 250KT within TMA at or below FL100 (refer RFCs).

**Arrival Procedure****Circling:** south of AD prohibited.**DEPARTURE****Take-off Minima**

RWY		11/29	
All ACFT	ft - m/km	0 - 400V	-

**Speed**

MAX IAS 250KT within TMA at or below FL100 (refer RFCs).

Changes: Editorial



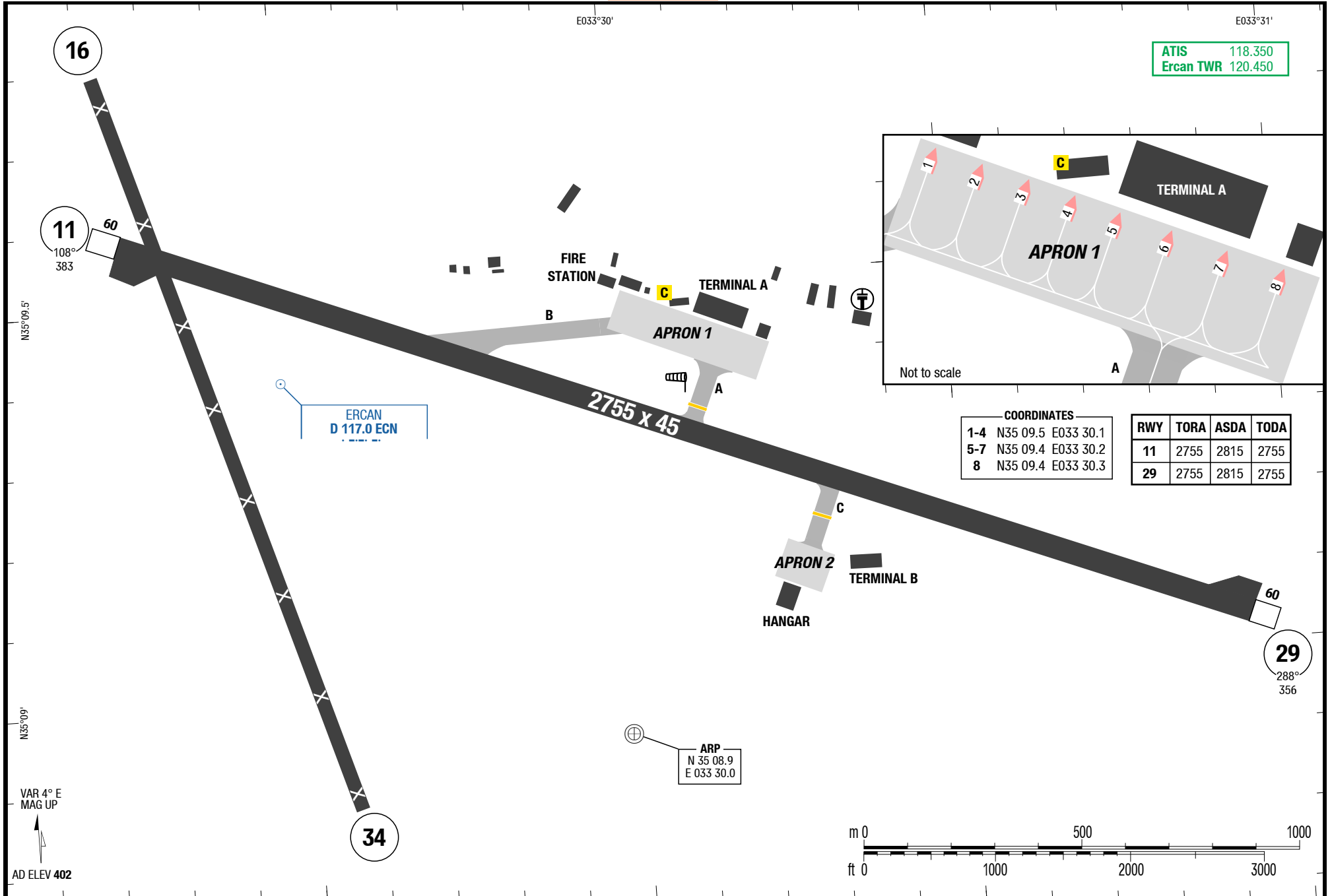
3-20

AGC

AGC

AGC

AGC



23-FEB-2017  
ECN-LCEN

Cyprus **Lefkosa** Lefkosa / Ercan Intl.

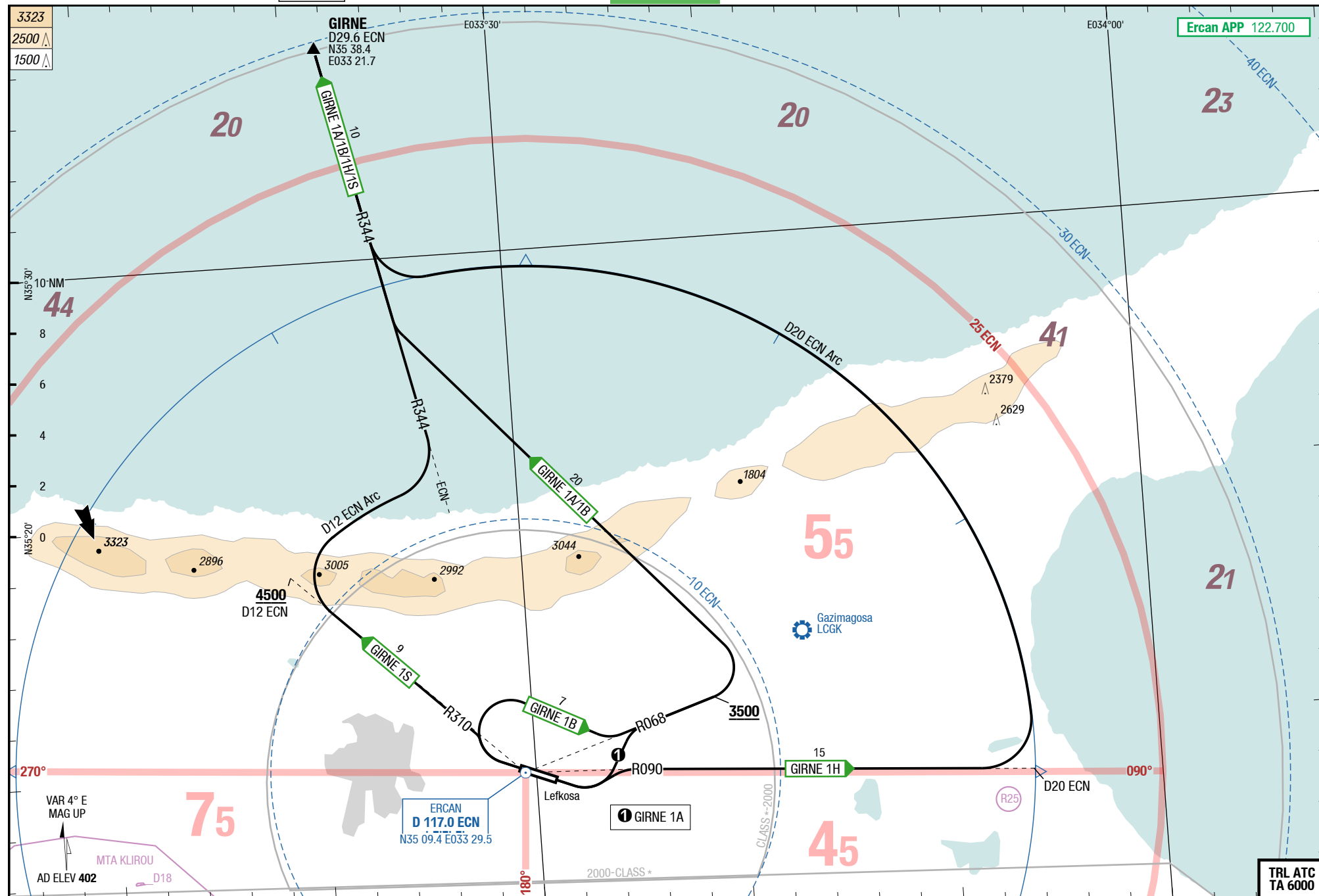
 **SIDs**

**SID**

**SID**

Lefkosa / Ercan Intl. **Lefkosa** Cyprus

 **SIDs**



Changes: FREQ, RWY, PROC, SUAs

THIS CHART IS A PART OF NAVIGRAPH CHARTS AND IS INTENDED FOR FLIGHT SIMULATION USE ONLY

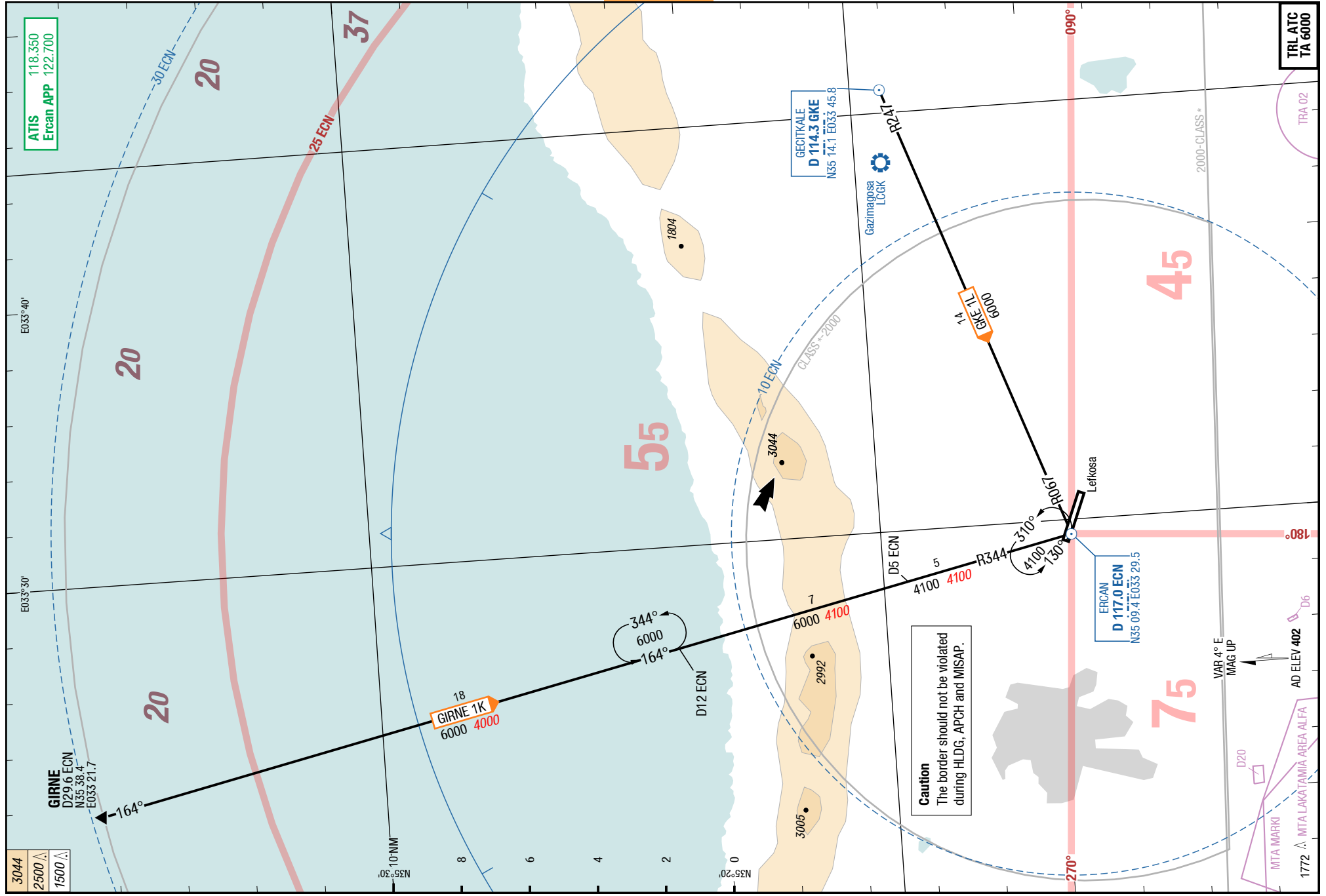
**GIRNE 1A / GIRNE 1H / GIRNE 1B / GIRNE 1S**

RWYs 11 (108°) / 29 (288°)

	GS	120	150	180	210	240	270
5.7%	ft/MIN	700	900	1100	1300	1400	1600

DESIGNATOR	ROUTING	ALTITUDES
	<b>Runway 11</b>	
<b>GIRNE 1A 122.700</b>	LT intercept R068 <b>ECN</b> - at MNM <b>3500</b> LT intercept R344 <b>ECN</b> to GIRNE	
<b>GIRNE 1H 122.700</b>	intercept R090 <b>ECN</b> - at D20 <b>ECN</b> LT follow D20 <b>ECN</b> arc - intercept R344 <b>ECN</b> to GIRNE	
	<b>Runway 29</b>	
<b>GIRNE 1B 122.700</b>	RT intercept R068 <b>ECN</b> - at MNM <b>3500</b> LT intercept R344 <b>ECN</b> to GIRNE	
<b>GIRNE 1S 5.7% to D12 <b>ECN</b> 122.700</b>	intercept R310 <b>ECN</b> - at D12 <b>ECN</b> RT follow D12 <b>ECN</b> arc - intercept R344 <b>ECN</b> to GIRNE	D12 <b>ECN</b> MNM <b>4500</b>

6-10



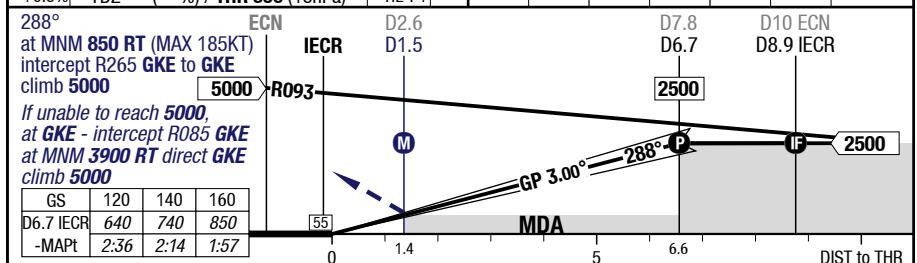
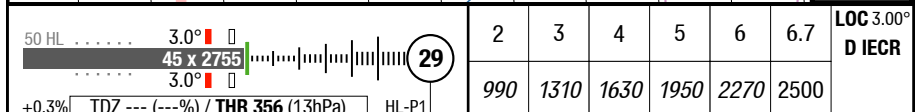
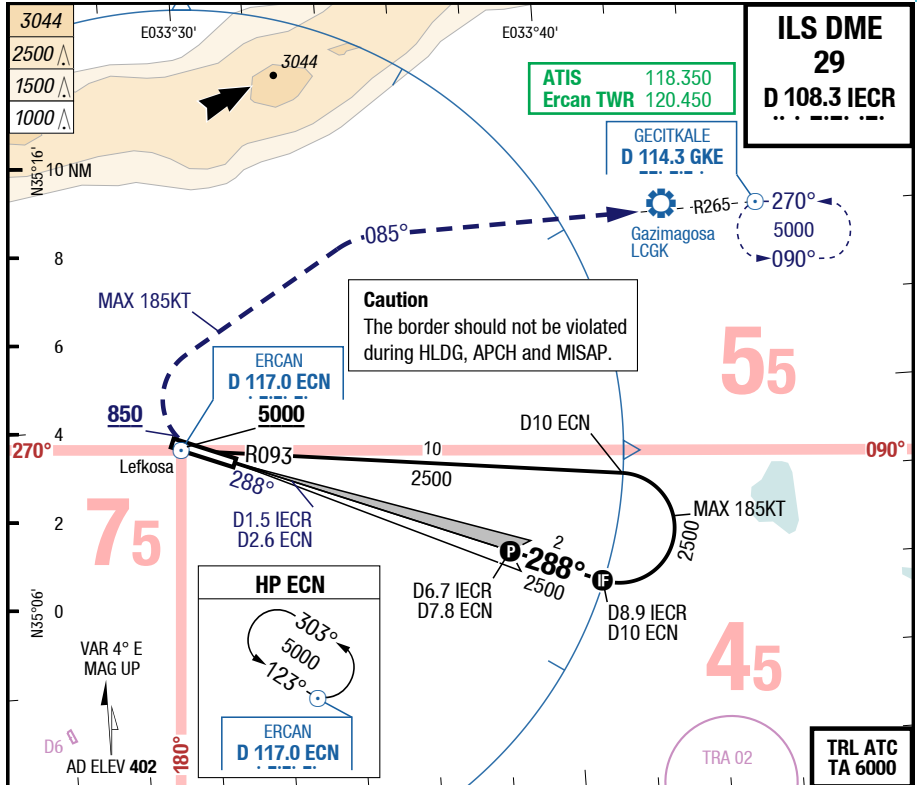
Changes: FREQ, Track, SUAs, Note

THIS CHART IS A PART OF NAVIGRAPH CHARTS AND IS INTENDED FOR FLIGHT SIMULATION USE ONLY

ECN-LCEN

7-10

ILS DME 29



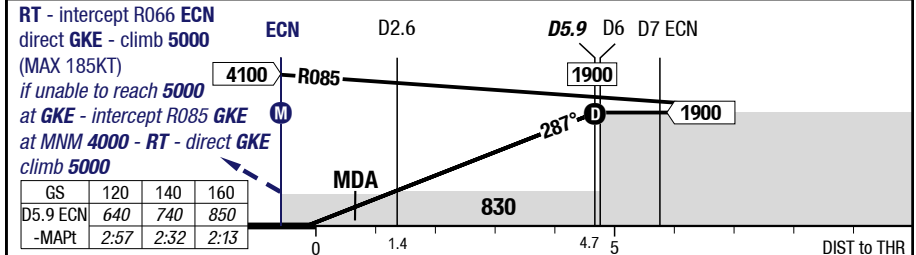
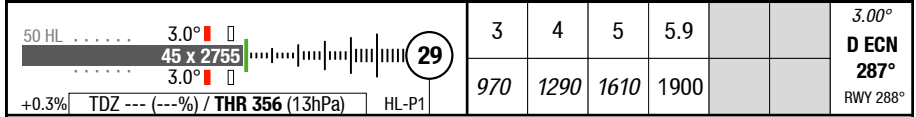
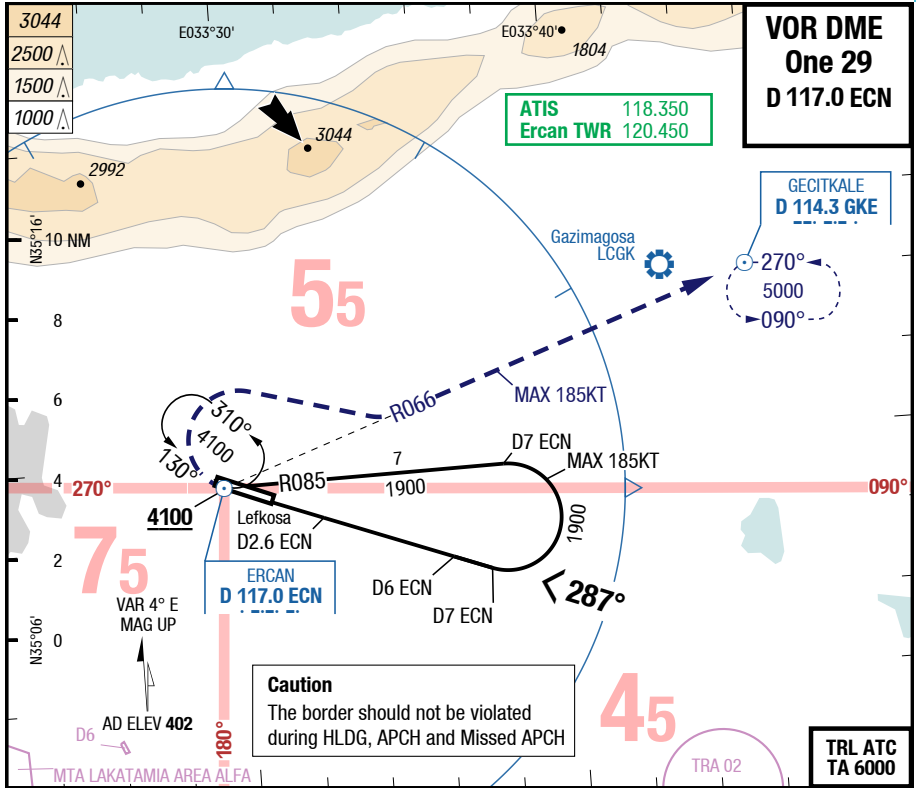
<b>29</b>	<b>Cat 1 DME</b> 1)	<b>LOC DME</b>	<b>Circling</b> 2)
C	ft - m/km ft	200 - 550 <b>560</b>	480 - 1.5 <b>830</b>
D	ft - m/km ft	200 - 550 <b>560</b>	480 - 1.5 <b>830</b>

1) FD, AP or HGS required, else RVR 750m  
2) N of AD only

ECN-LCEN

7-20

VOR DME One 29



<b>29</b>	<b>VOR DME</b>				<b>Circling</b> 1)
C	ft - m/km ft	480 - 1.5 <b>830</b>			700 - 2.4V <b>1100</b>
D	ft - m/km ft	480 - 1.5 <b>830</b>			700 - 3.6V <b>1110</b>

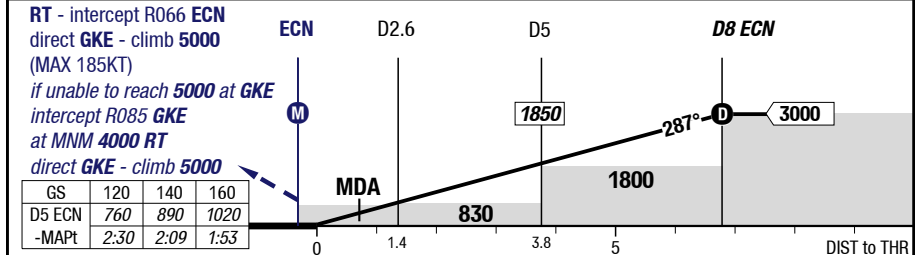
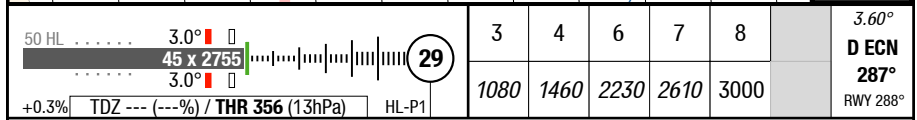
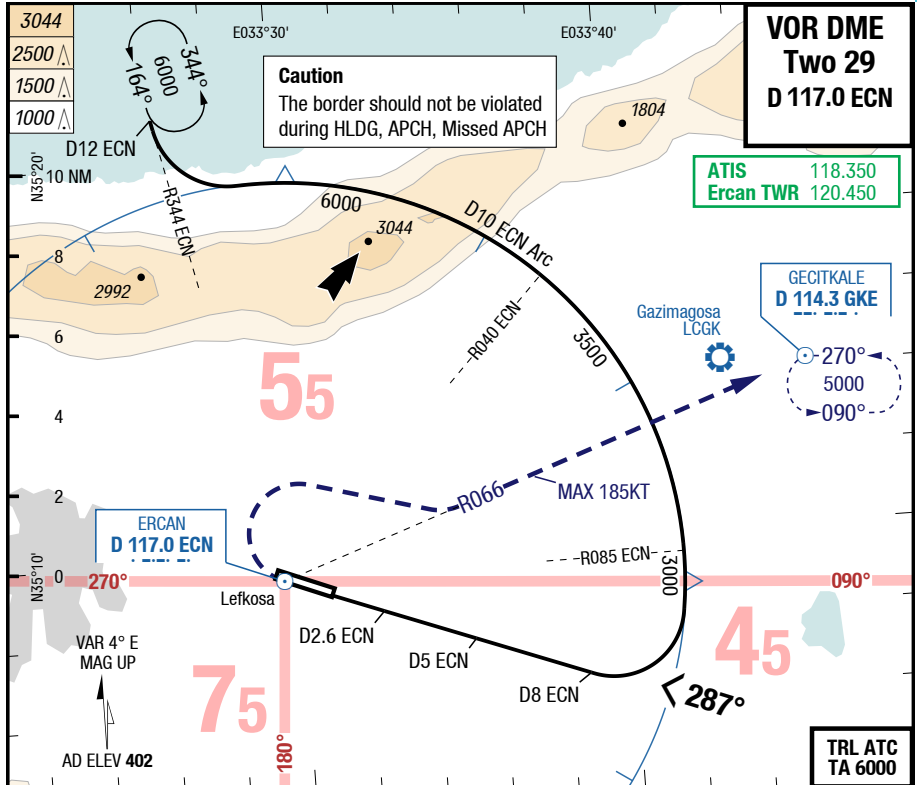
1) N of AD only



**ECN-LCEN**

7-30

**VOR DME Two 29**

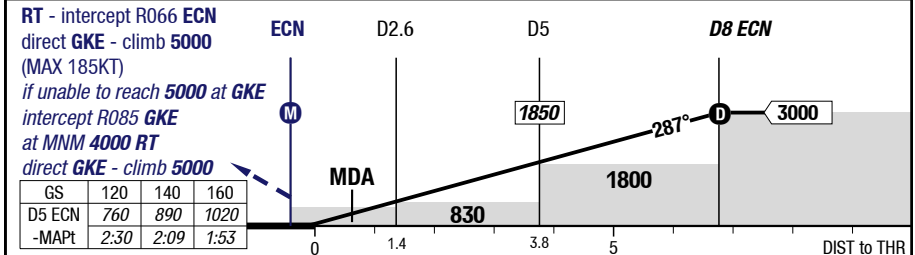
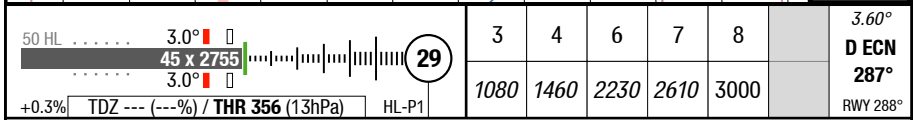
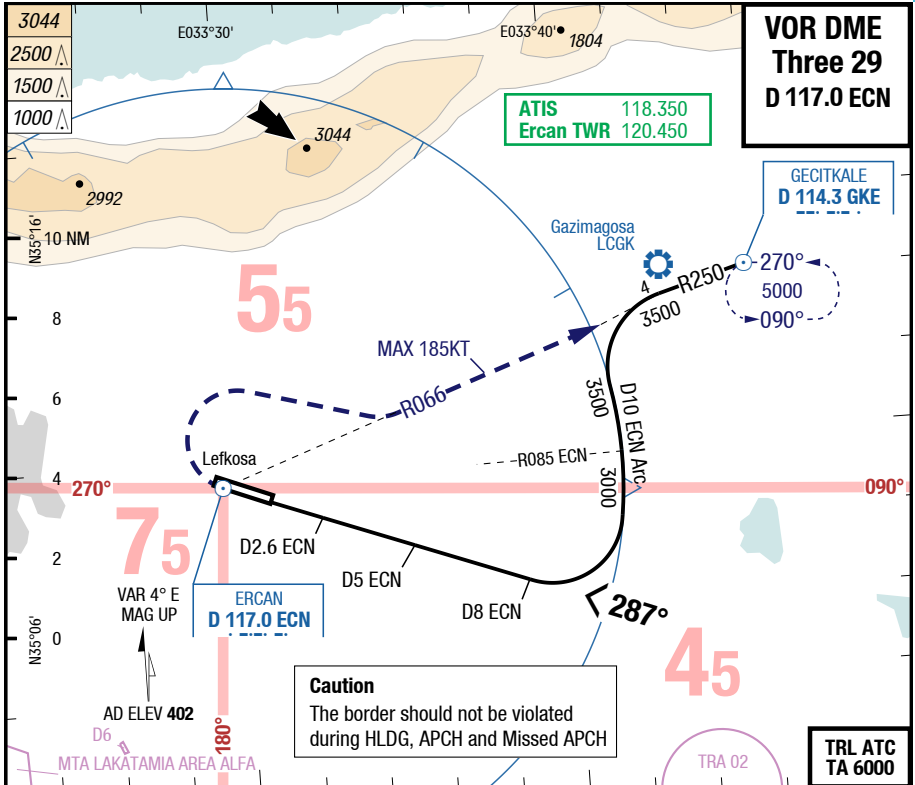


<b>29</b>	<b>VOR DME</b>				<b>Circling</b> 1)
C	ft - m/km ft	480 - 1.5 <b>830</b>			700 - 2.4V <b>1100</b>
D	ft - m/km ft	480 - 1.5 <b>830</b>			700 - 3.6V <b>1110</b>

1) N of AD only

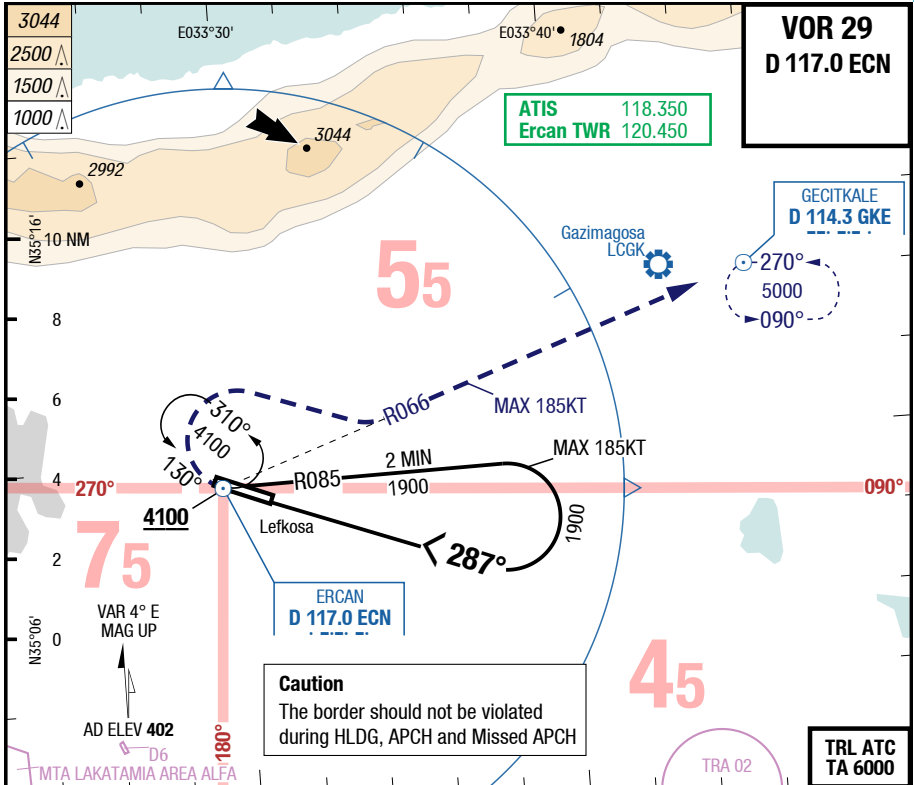
7-40

VOR DME Three 29

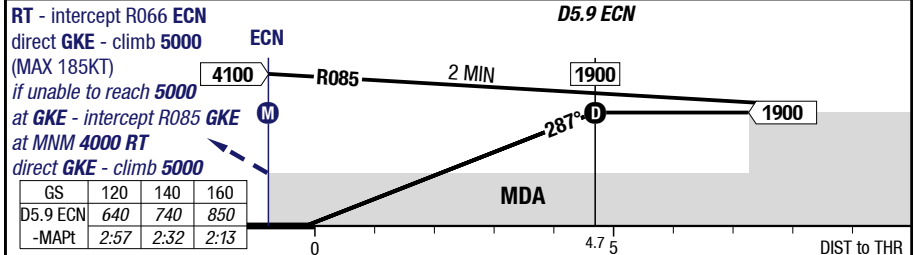


29		VOR DME				Circling <sup>1)</sup>
C	ft - m/km ft	480 - 1.5 830				700 - 2.4V 1100
D	ft - m/km ft	480 - 1.5 830				700 - 3.6V 1110

1) N of AD only



50 HL	3.0°	3	4	5	5.9	3.00°
45 x 2755	3.0°	970	1290	1610	1900	D ECN
+0.3% TDZ --- (---%) / THR 356 (13hPa)						287°
						RWY 288°



<b>29</b>	<b>VOR</b>				<b>Circling</b> 1)
C	ft - m/km ft	480 - 1.5 <b>830</b>			700 - 2.4V <b>1100</b>
D	ft - m/km ft	480 - 1.5 <b>830</b>			700 - 3.6V <b>1110</b>

1) N of AD only

Effective 02-MAR-2017

23-FEB-2017

ECN-LCEN

8-10

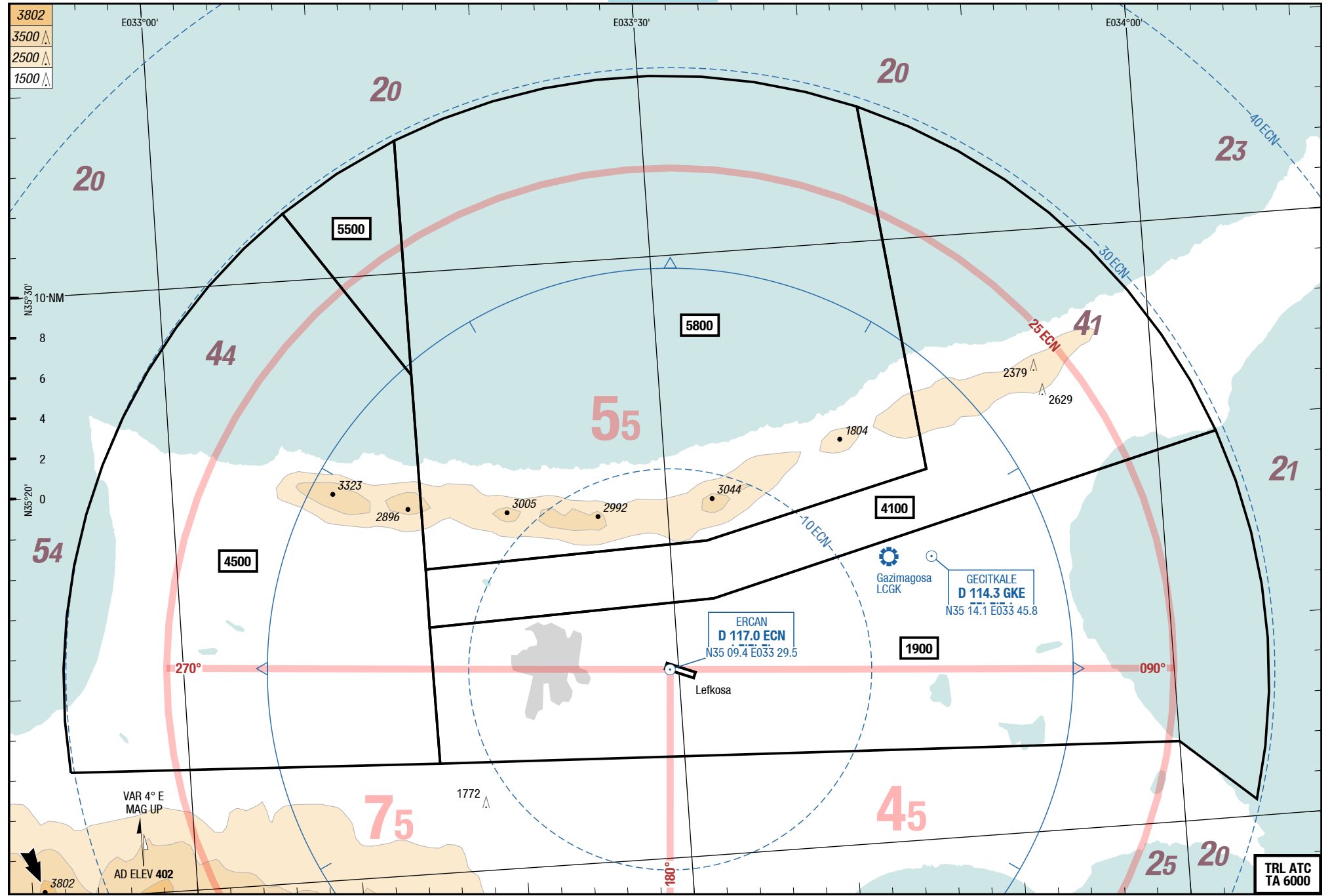
Cyprus **Lefkosa** Lefkosa / Ercan Intl.

NIL  
MRC

MRC  
MRC

Lefkosa / Ercan Intl. **Lefkosa** Cyprus

NIL  
MRC



Changes: new

THIS CHART IS A PART OF NAVIGRAPH CHARTS AND IS INTENDED FOR FLIGHT SIMULATION USE ONLY

TRL ATC  
TA 6000

© Lido 2017