

GENERAL

ATS Hours

H24

Airport Information

RFF: CAT 4
Fuel: JP-8
LCN: RWY 06/24: 50

Operation

Traffic Note

Exceeding Etimesgut RWYs departure and APCH paths course prohibited.

TWY Restriction

TWY width 15m / 49ft.

ARRIVAL

Speed

MAX IAS 250KT within TMA at or below FL100 (refer to RFCs)

Communication

If approaching to Ankara can not contact with Eseboga APP, then contact with Etimesgut TWR and can take APP instructions for Guvercinlik.

Arrival Procedure

IFR TFC approaching to Guvercinlik AD which executing any IAC for Estimesgut AD and instructed to execute by APP unit may be permitted to land in VFR conditions in case pilot reported that LDG may be finished in continous VMC conditions and LDG CLR is given by Guvercinlik TWR.

DEPARTURE

Take-off Minima

RWY		06/24	
All ACFT	ft - m/km	0 - 400v	wo LGT, HJ only

Speed

MAX IAS 250KT within TMA at or below FL100 (refer to RFCs)

ATC Clot, Clearance

Start-up: For start-up PROCs see CRAR Turkey.

14-JUN-2012
N/A-LTAB

Turkey Ankara Guvercinlik

AGC
AFC

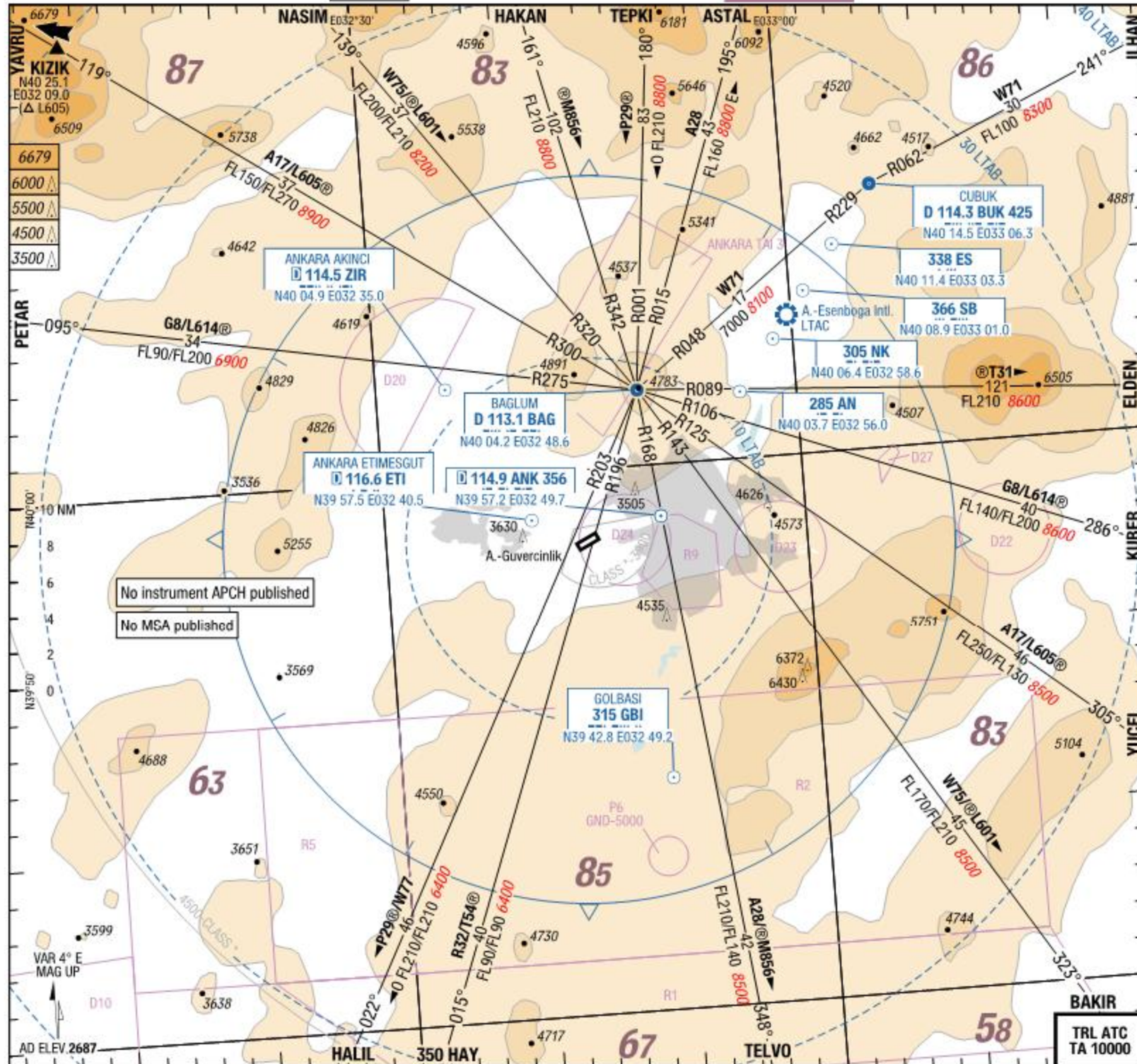
AFC

AFC

Guvercinlik Ankara Turkey

AGC
AFC

2-10



Landing RWY system:

06 24

8.4° PAPI PSN unknown

2014 x 30

PAPI for training only

2682 / 94hPa TDZ ---% +0.1%

PAPI for training only

30 x 2014

PAPI PSN unknown 4.1°

-0.1% TDZ ---% 2691 / 94hPa

Changes: New

FLIGHT SIMULATION USE ONLY

3-20

AGC

AGC

AGC

AGC

ATIS	118.675
Guvercinlik TWR	132.000
	125.600 Emergency
GND	120.200 H0
	123.600 Emergency

Caution:
No official airport graphic available.
Chart contents are based on the best available information.
NOTAMs may not be available.
Use at your own discretion.

ARP
N 39 56.1
E 032 44.5

24
239°
2691

06
059°
2682

VAR 4° E
MAG UP
AD ELEV 2687

2014 x 30

150

