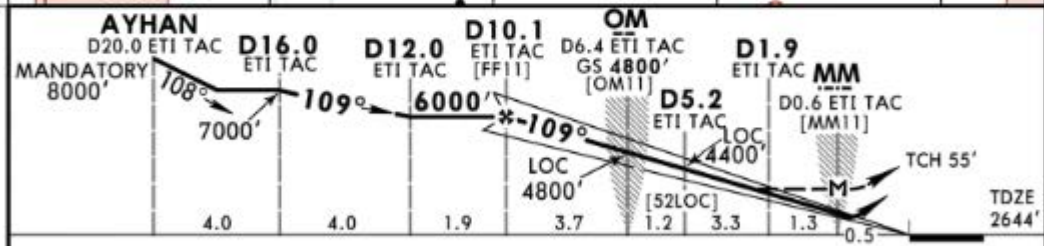
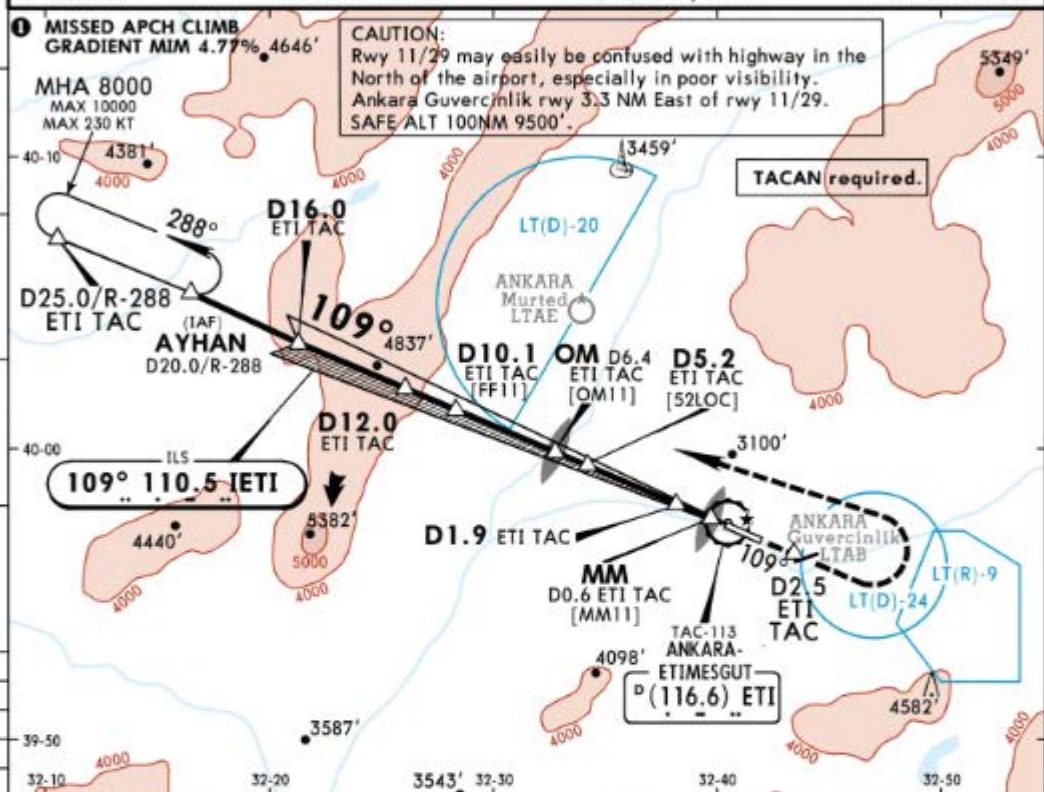
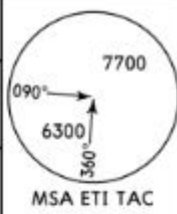


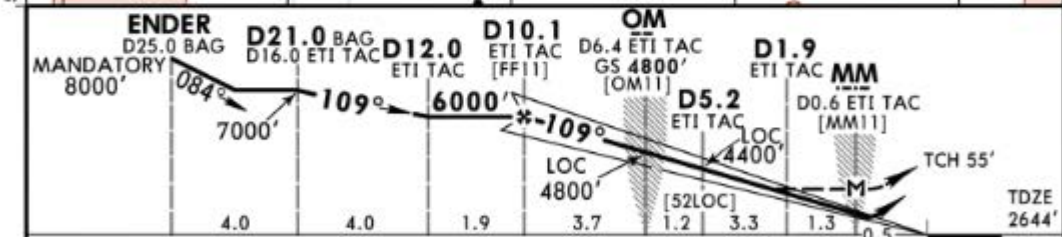
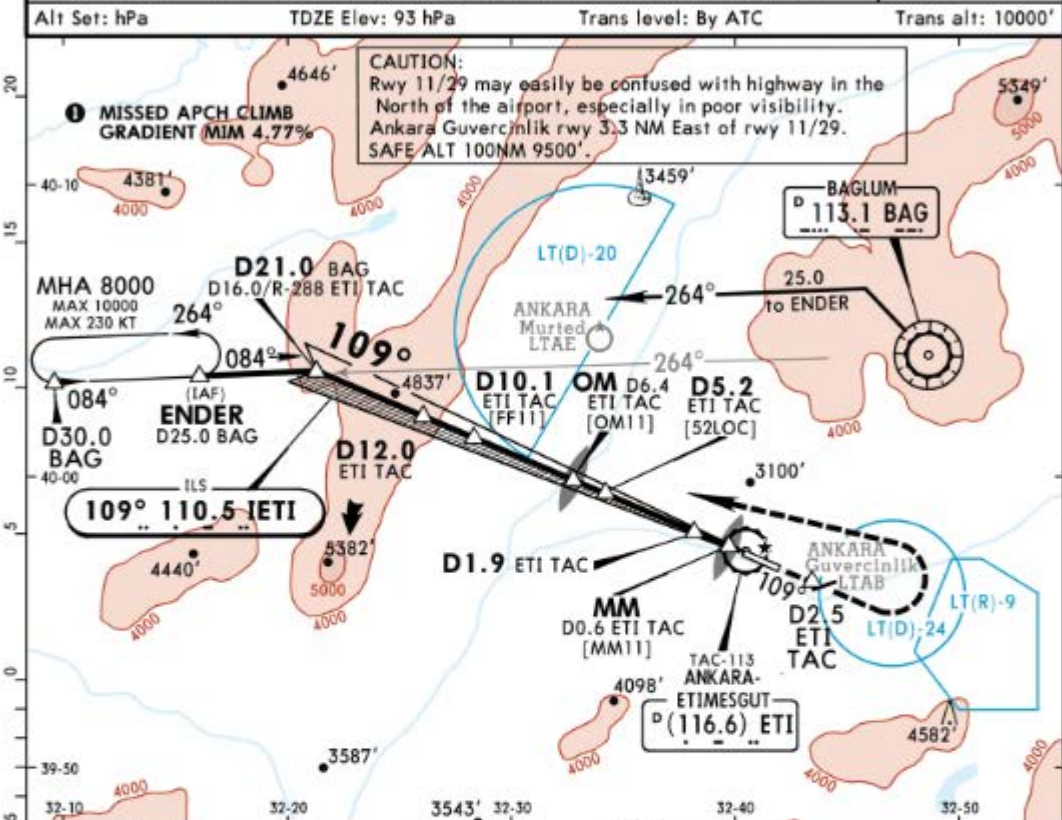
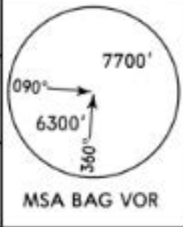
ESENBOGA Approach/Radar			ETIMESGUT Tower		
119.1 119.6 122.1			122.1		
LOC IETI 110.5	Final Apch Crs 109°	GS OM 4800' (2156')	ILS DA(H) 2844' (200')	Apt Elev 2653' TDZE 2644'	
<p>MISSED APCH: Climb on rwy heading to 3300' within D2.5 ETI TAC, then turn LEFT (MAX 230 KT), continue climbing to AYHAN at or above 8000' and contact APPROACH. MIM bank angle 25°.</p>					
Alt Set: hPa		TDZE Elev: 93 hPa		Trans level: By ATC	
Trans alt: 10000'					



Grnd speed-Kts	70	90	100	120	140	160		3300' on Rwy heading within D2.5 ETI TAC 116.6
ILS GS	3.00°	372	478	531	637	849		
LOC Descent Angle	3.15°	390	502	557	669	892		
MAP at MM/D0.6 ETI TAC								

Military				CIRCLE-TO-LAND			
<p>STRAIGHT-IN LANDING RWY 11 Missed apch climb grad mim 4.77% to 8000'</p>							
<p>ILS DA(H) 2844' (200')</p>				<p>LOC (GS out) MDA(H) 3280' (636')</p>			
FULL		ALS out		MDA(H)		ALS out	
A				1200m	1600m	Max Kts	
B	800m	1200m				100	4100'(1447') 2000m
C				2000m	2800m	135	4100'(1447') 2400m
D				2400m	3200m	180	4100'(1447') 4800m
<p>Not authorized South of rwy 11/29</p>							

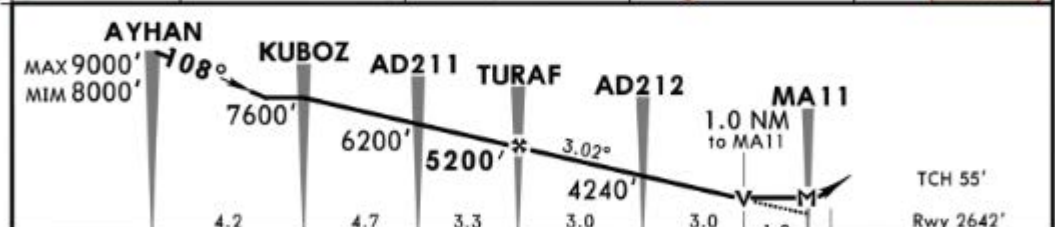
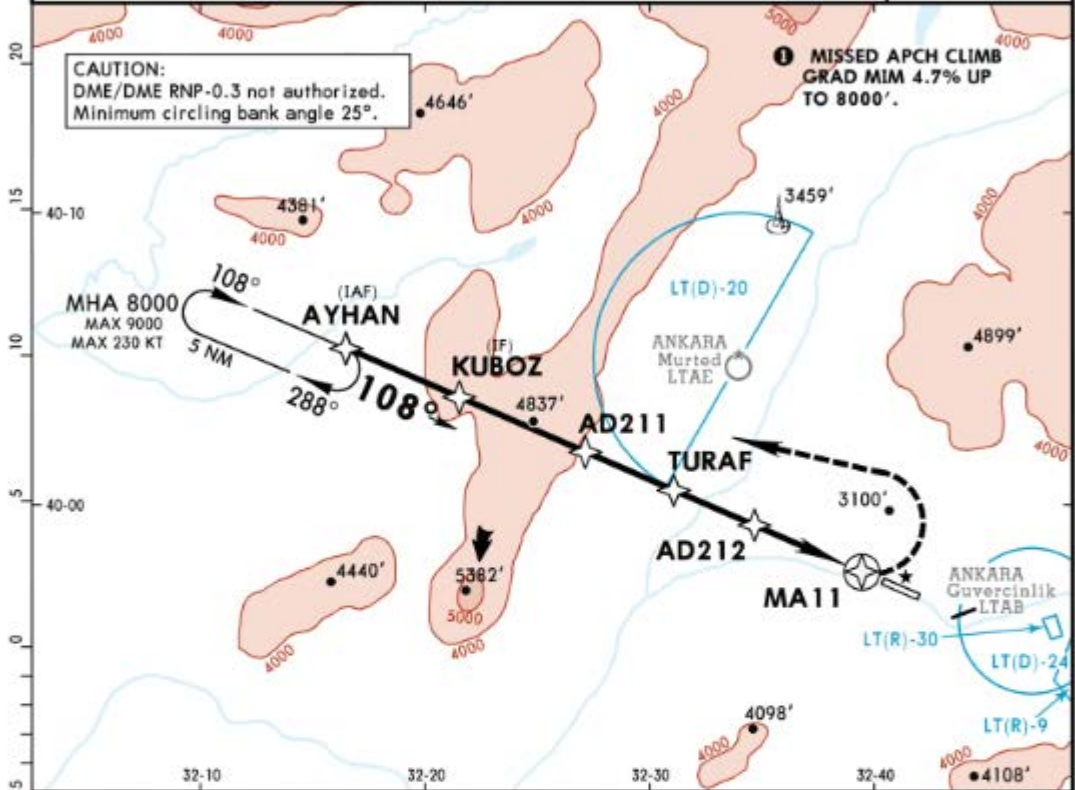
ESENBOGA Approach/Radar			ETIMESGUT Tower		
119.1 119.6 122.1			122.1		
LOC IETI 110.5	Final Apch Crs 109°	GS OM 4800' (2156')	ILS DA(H) 2844' (200')	Apt Elev 2653' TDZE 2644'	
<p>MISSED APCH: Climb on rwy heading to 3300' within D2.5 ETI TAC, then turn LEFT (MAX 230 KT), continue climbing to ENDER at or above 8000' and contact APPROACH. MIM bank angle 25°.</p>					
Alt Set: hPa		TDZE Elev: 93 hPa		Trans level: By ATC	



Gnd speed-Kts	70	90	100	120	140	160
ILS GS	3.00°	372	478	531	637	743
LOC Descent Angle	3.15°	390	502	557	669	780
MAP at MM/D0.6 ETI TAC						

Military				STRAIGHT-IN LANDING RWY 11		CIRCLE-TO-LAND	
Missed apch climb grad mim 4.77% to 8000'						Not authorized South of rwy 11/29	
ILS		LOC (GS out)					
DA(H) 2844' (200')		MDA(H) 3280' (636')					
FULL		ALS out					
A				1200m	1600m	Max Kts	MDA(H) VIS
B	800m	1200m				100	4100' (1447') 2000m
C				2000m	2800m	135	4100' (1447') 2400m
D				2400m	3200m	180	4100' (1447') 4800m
						205	

ESENBOGA Approach/Radar				ETIMESGUT Tower	
119.1		119.6		122.1	
RNAV	Final Apch Crs 108°	Minimum Alt TURAF 5200' (2558')	LNAV MDA(H) 3280' (638')	Apt Elev 2653'	7700
Rwy 2642'					
MISSED APCH: Turn LEFT (MAX 230 KT) and proceed to AYHAN climbing to 8000' or above and contact Esenboga APP continuously. MIM bank angle 25°.					
Alt Set: hPa	Rwy Elev: 93 hPa	Trans level: By ATC		Trans alt: 10000'	
					MSA MA11



20.0	15.8	11.1	7.8	4.8	0.80	HIALS PAPI PAPI	230 KT MAX	8000'	AYHAN
Gnd speed-Kts	70	90	100	120	140				
Descent Angle	3.02°	374	481	534	641	748	855		
MAP at MA11									

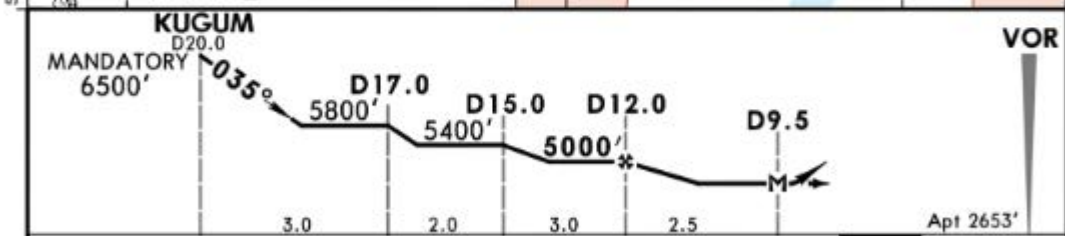
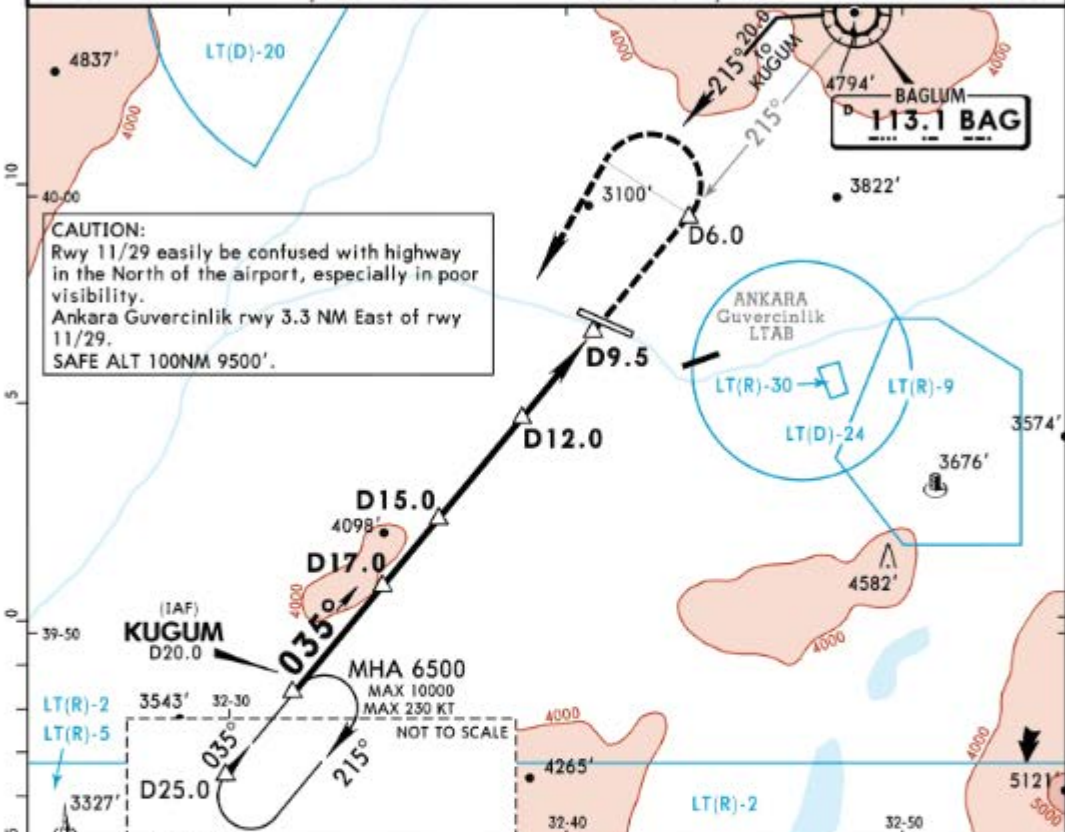
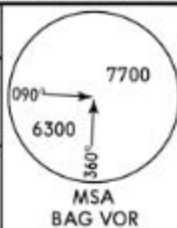
Military				STRAIGHT-IN LANDING RWY 11		CIRCLE-TO-LAND	
LNAV						Not authorized South of rwy 11/29	
Missed apch climb gradient mim 4.7% up to 8000'							
MDA(H) 3280' (638')							
				ALS out		Max Kts	
A	1200m		2000m		100	4100' (1447')	2000m
B	2000m		2800m		135	4100' (1447')	2400m
C	2400m		3200m		180	4100' (1447')	4800m
D					205		

LTAD/ANK
ETIMESGUT

JEPPESEN
22 JUN 18 **23-1**

ANKARA, TURKEY
MISSED APCH CLIMB
GRADIENT MIM 3.13%
VOR DME A

ESENBOGA Approach/Radar 119.1 119.6 122.1			ETIMESGUT Tower 122.1		
VOR BAG 113.1	Final Apch Crs 035°	Minimum Alt D12.0 5000' (2347')	MDA(H) 4100' (1447')	Apt Elev 2653'	
MISSED APCH: Climb on R-215 inbound to D6.0, then turn LEFT (MAX 230 KT) continue climbing to KUGUM at or above 6500' and hold. Contact APPROACH.					
Alt Set: hPa		Apt Elev: 93 hPa		Trans level: By ATC	



MAP at D9.5	Lighting - Refer to Airport Chart	D6.0	BAG on 113.1
		↑	R-215

Military STRAIGHT-IN LANDING		CIRCLE-TO-LAND Missed apch climb grad mim 3.13% to 6500' Not authorized South of rwy 11/29	
A		Max Kts: 100	MDA(H): 4100' (1447') VTS: 2000m
B		135	4100' (1447') 2400m
C	NOT AUTHORIZED	180	4100' (1447') 4800m
D		205	4100' (1447') 4800m

PANS OPS **MIM** bank angle 25°.

CHANGES: None.

© JEPPESEN, 1999, 2017. ALL RIGHTS RESERVED.

LTAD/ANK
ETIMESGUT

JEPPESEN
17 MAR 17
Eff 30 Mar **26-1**

MISSED APCH CLIMB
GRADIENT MIM 4.6%

ANKARA, TURKEY
NDB DME A

ESENBOGA Approach/Radar

ETIMESGUT Tower

119.1 119.6 122.1

122.1

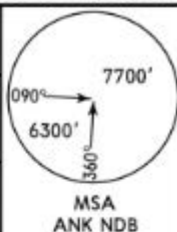
NDB
ANK
356

Final
Apch Crs
260°

Minimum Alt
NDB
6000' (3347')

MDA(H)
4100' (1447')

Apt Elev 2653'



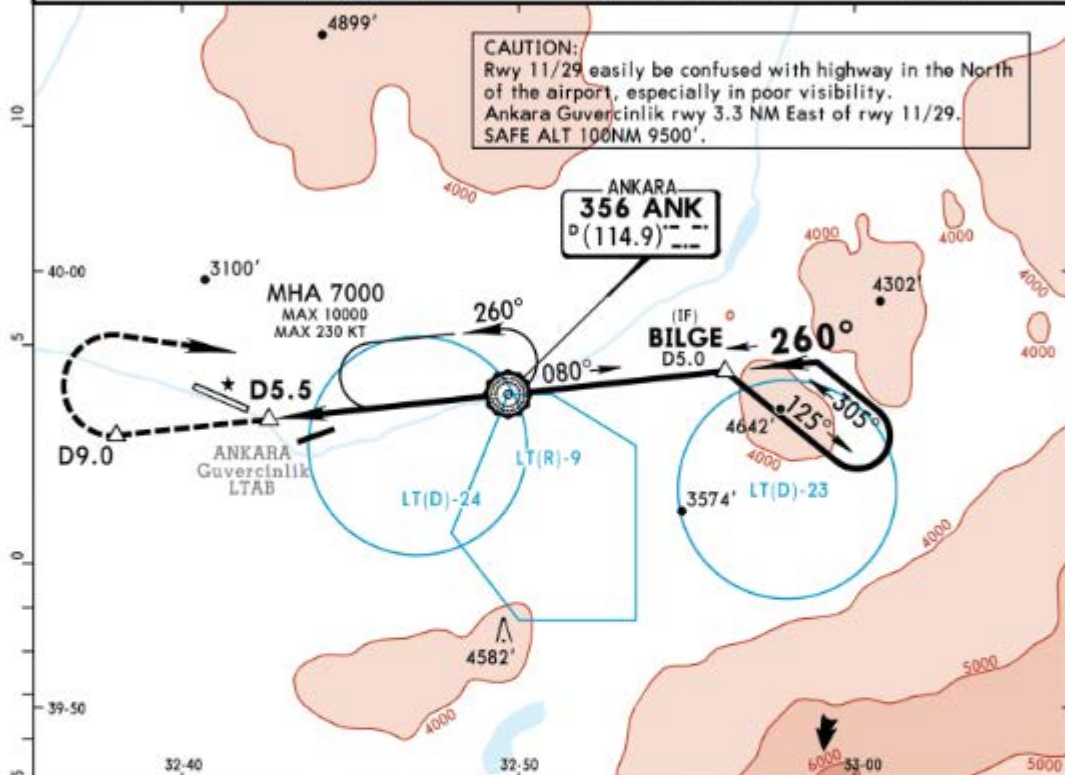
MISSED APCH: Climb on 260° from NDB to D9.0, turn RIGHT (MAX 230 KT) climbing to NDB at or above 7000' and hold.
Contact APPROACH. (Coordinate Missed apch with TWR.)

Alt Set: hPa

Apt Elev: 93 hPa

Trans level: By ATC

Trans alt: 10000'



CAUTION:
Rwy 11/29 easily be confused with highway in the North of the airport, especially in poor visibility.
Ankara Guvercinlik rwy 3.3 NM East of rwy 11/29.
SAFE ALT 100NM 9500'.

ANKARA
356 ANK
D (114.9)

(IF)
BILGE
D5.0

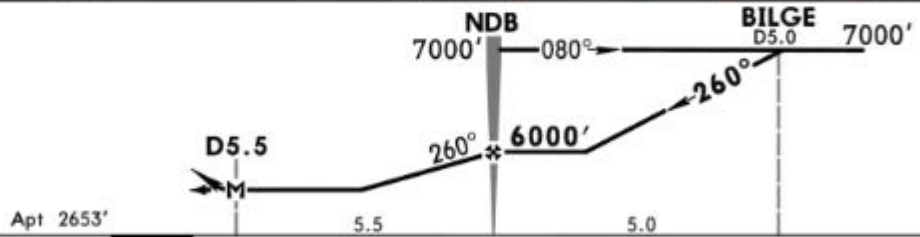
MHA 7000
MAX 10000
MAX 230 KT

ANKARA
Guvercinlik
LTAB

LT(R)-9

LT(D)-24

LT(D)-23



MAP at D5.5	Lighting - Refer to Airport Chart	D9.0	260° from ANK 356
-------------	-----------------------------------	------	-------------------

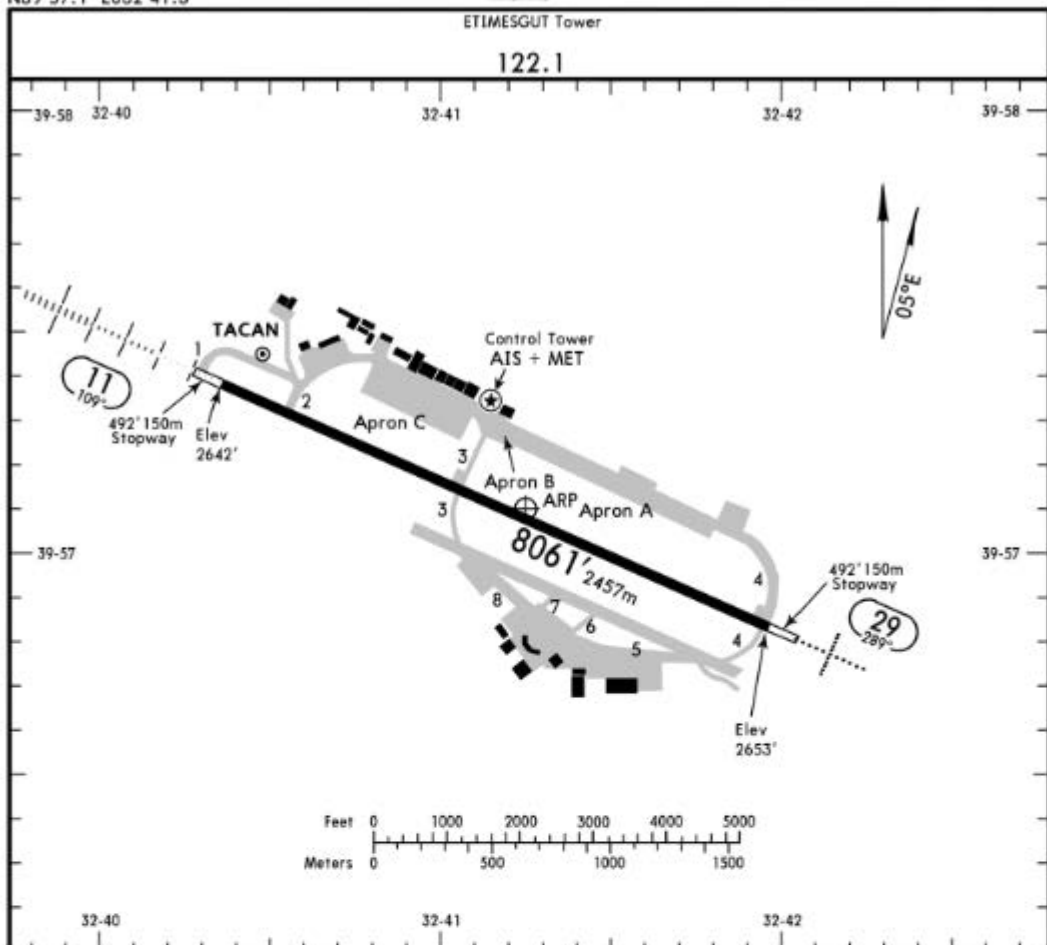
Military	STRAIGHT-IN LANDING	CIRCLE-TO-LAND Missed apch climb grad mim 4.6% to 7000'
		Not authorized South of rwy 11/29

PANS OPS	Max Kts	MDA(H)	VIS
A	100	4100' (1447')	2000m
B	135	4100' (1447')	2400m
C	180	4100' (1447')	4800m
D	205	4100' (1447')	4800m

MIM bank angle 25°.

CHANGES: None.

© JEPPESEN, 1999, 2017. ALL RIGHTS RESERVED.



ADDITIONAL RUNWAY INFORMATION

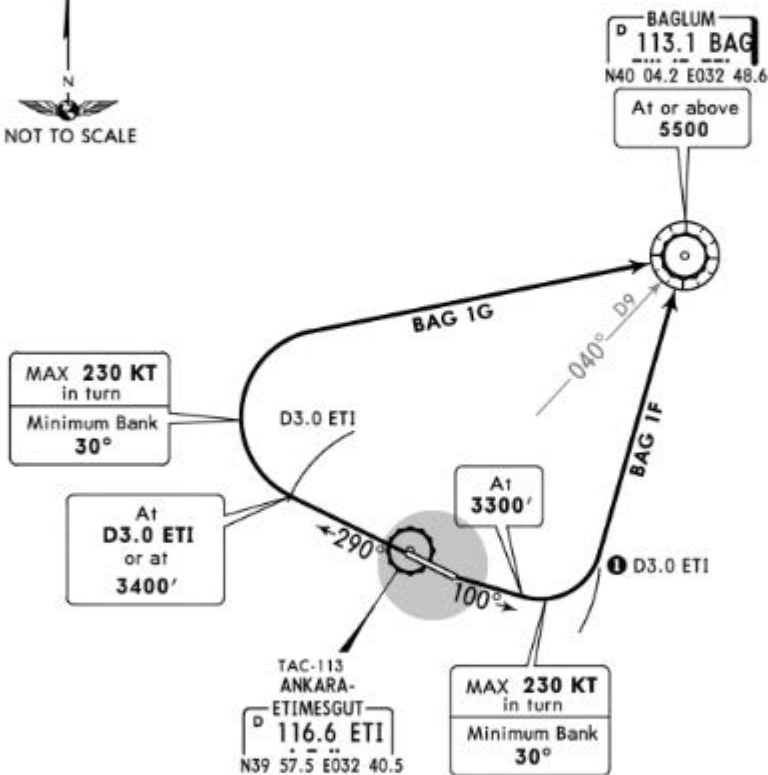
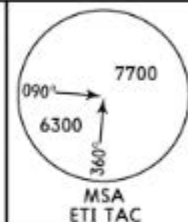
RWY	HIRL (60m)	HIALS	PAPI (angle 3.0°)	USABLE LENGTHS		TAKE-OFF	WIDTH
				Threshold	LANDING BEYOND Glide Slope		
11					6967' 2124m		138' 42m
29							

Standard TAKE-OFF		
Low Visibility Take-off		
Day: RL & RCLM Night: RL	Day: RL or RCLM Night: RL	Adequate vis ref (Day only)
A		
B		
C	rVR 300m	400m
D		500m

Apt Elev
2653'

Trans level: By ATC Trans alt: 10000'
 1. CAUTION: Guvercinlik RWY 3.3 NM EAST of RWY 11/29.
 2. Emergency Safe Altitude within 100 NM of Etimesgut 9500'.
 3. (CIO) Close-in obstacle:
 RWY 11:
 2753' terrain 3751' from DER 1327' left of centerline.
 RWY 29:
 2648' terrain 50' from DER 500 right of centerline.
 2723' steeple 1850' from DER 823' left of centerline.
 2774' building 3876' from DER 1715' right of centerline.
 2731' building 3362' from DER 1277' right of centerline.

**BAG 1F, BAG 1G
DEPARTURES**



CAUTION: Do not cross beyond D3.0 EAST of ETI TACAN.

These SIDs require minimum climb gradients of

BAG 1F: 5.92% up to 5500'.
BAG 1G: 4.28% up to 5500'.

Gnd speed-KT	75	100	150	200	250	300
4.28% V/V (fpm)	325	433	650	867	1084	1300
5.92% V/V (fpm)	450	600	899	1199	1499	1799

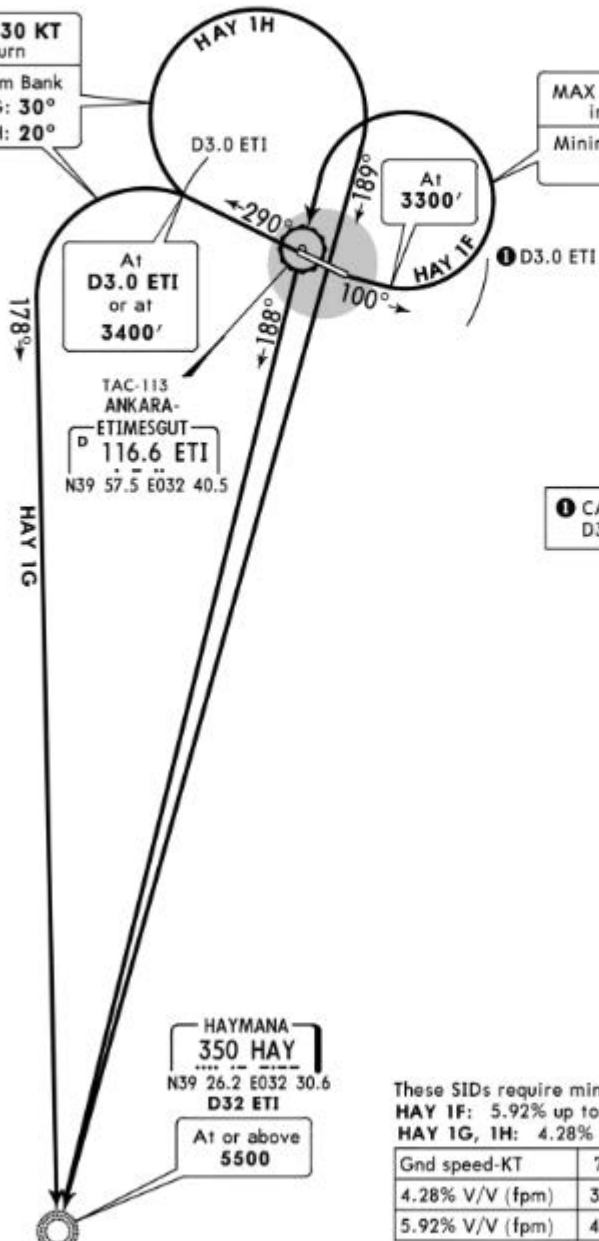
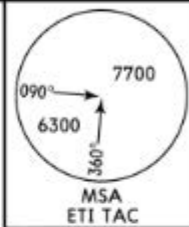
SID	RWY	ROUTING
BAG 1F	11	Climb on 100° track to 3300' within D3.0 ETI, turn LEFT to BAG VOR, climb to at or above 5500' and contact Esenboga Approach.
BAG 1G	29	Climb on 290° track to D3.0 ETI or 3400', turn RIGHT to BAG VOR, climb to at or above 5500' and contact Esenboga Approach.

Apt Elev
2653'

Trans level: By ATC Trans alt: 10000'
 1. CAUTION: Guvercinlik RWY 3.3 NM EAST of RWY 11/29.
 2. Emergency Safe Altitude within 100 NM of Etimesgut 9500'.
 3. (CIO) Close -in obstacle:
 RWY 11:
 2753' terrain 3751' from DER 1327' left of centerline.
 RWY 29:
 2648' terrain 50' from DER 500 right of centerline.
 2723' steeple 1850' from DER 823' left of centerline.
 2774' building 3876' from DER 1715' right of centerline.
 2731' building 3362' from DER 1277' right of centerline.

MAX 230 KT
in turn
Minimum Bank
HAY 1G: 30°
HAY 1H: 20°

MAX 230 KT
in turn
Minimum Bank
30°



HAY 1F
HAY 1G
HAY 1H
DEPARTURES

1 CAUTION: Do not cross beyond
D3.0 EAST of ETI TACAN.

At
D3.0 ETI
or at
3400'

At
3300'

TAC-113
ANKARA-
ETIMESGUT
116.6 ETI
N39 57.5 E032 40.5

HAYMANA
350 HAY
N39 26.2 E032 30.6
D32 ETI
At or above
5500



These SIDs require minimum climb gradients of
 HAY 1F: 5.92% up to 5500'.
 HAY 1G, 1H: 4.28% up to 5500'.

Gnd speed-KT	75	100	150	200	250	300
4.28% V/V (fpm)	325	433	650	867	1084	1300
5.92% V/V (fpm)	450	600	899	1199	1499	1799

SID	RWY	ROUTING
HAY 1F	11	Climb on 100° track to 3300' within D3.0 ETI, turn LEFT, cross ETI TAC, then to HAY NDB, climb to at or above 5500' and contact Esenboga Approach.
HAY 1G	29	Climb on 290° track to D3.0 ETI or 3400', turn LEFT to HAY NDB, climb to at or above 5500' and contact Esenboga Approach.
HAY 1H		Climb on 290° track to D3.0 ETI or 3400', turn RIGHT to HAY NDB, climb to at or above 5500' and contact Esenboga Approach.

LTAD/ANK
ETIMESGUT

JEPPESEN
11 OCT 13 20-1R

ANKARA, TURKEY

Eff 17 Oct 13 ADAR MINIMUM ALTITUDES

ESENBOGA Approach/Radar

119.1 119.6 122.1

Apt Elev

2653'

Alt Set: hPa

Trans level: By ATC

Trans alt: 10000'

