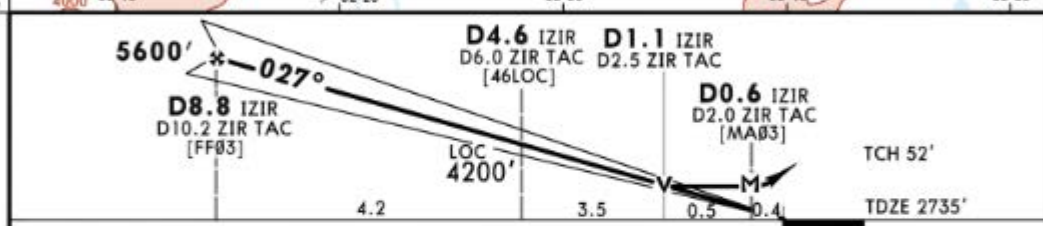
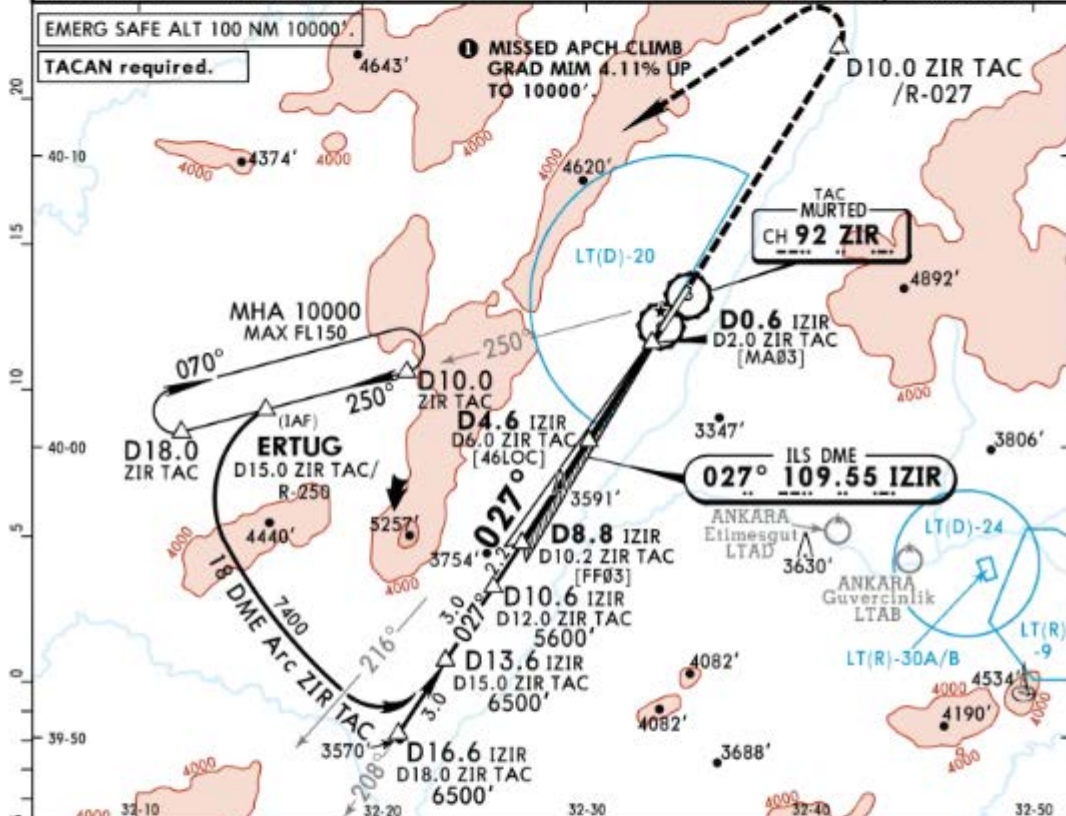
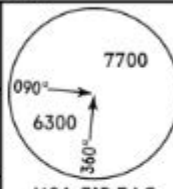


LTAE  
MURTED

JEPPESEN  
14 APR 17  
Eff 27 Apr (41-1)

ANKARA, TURKEY  
● ILS or LOC Z Rwy 03

ATIS 127.225		ESENBOGA Approach (R) 119.1      119.6		*MURTED Tower/RAPCON 122.1	
LOC IZIR <b>109.55</b>	Final Apch Crs <b>027°</b>	GS <b>D8.8 IZIR</b> 5600' (2865')	ILS DA(H) <b>2935'</b> (200')	Apt Elev 2767' TDZE 2735'	
<b>MISSED APCH: Climb on heading 027° to R-027/ D10.0 ZIR TAC then climbing LEFT turn proceed to R-250/ D18.0 ZIR TAC climbing to 10000' or above and contact Approach.</b>					
Alt Set: hPa		TDZ Elev: 96 hPa		Trans level: By ATC	
		Trans alt: 10000'		MSA ZIR TAC	



Gnd speed-Kts	70	90	100	120	140	160	HIALS PAPI PAPI D10.0 ZIR TAC on 027° hdg
ILS GS or LOC Descent Angle 3.07°	380	489	543	652	760	869	

<b>Military</b>				<b>STRAIGHT-IN LANDING RWY 03</b>				<b>CIRCLE-TO-LAND</b>			
Missed apch climb gradient mim 4.11% up to 10000'											
ILS DA(H) <b>2935'</b> (200')				LOC (GS out) MDA(H) <b>3080'</b> (345')							
ALS out				ALS out				Max Kts			
A							100	3270' (503')		2000m	
B				800m			135	3390' (623')		2000m	
C	800m		1200m					180	3620' (853')		4000m
D				1200m			205	3990' (1223')		4800m	

PANS OPS

Minimum circling bank angle 30°.

CHANGES: New procedure.

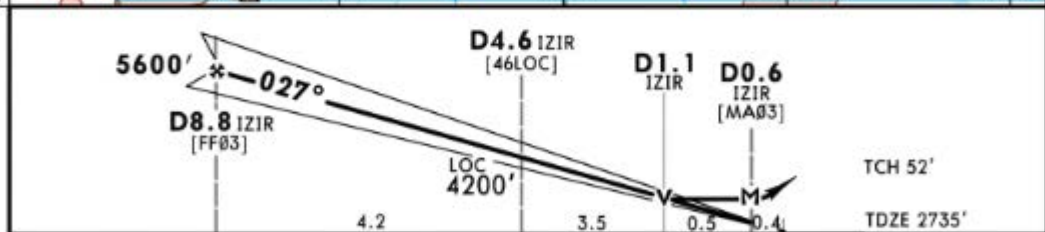
© JEPPESEN, 2017. ALL RIGHTS RESERVED.

LTAE  
MURTED

JEPPESEN  
14 APR 17  
Eff 27 Apr (41-2)

ANKARA, TURKEY  
●ILS or LOC Y Rwy 03

ATIS 127.225		ESENBOGA Approach (R) 119.1		*MURTED Tower/RAPCON 119.6		122.1	
LOC IZIR <b>109.55</b>	Final Apch Crs <b>027°</b>	GS <b>D8.8 IZIR</b> 5600' (2865')	ILS DA(H) <b>2935'</b> (200')	Apt Elev 2767'		TDZE 2735'	
MISSED APCH: Climb on heading 027° to R-325/ D11.0 BAG then climbing LEFT turn proceed to EKLOM climbing to 7400' or above and contact Approach.							
Alt Set: hPa	TDZ Elev: 96 hPa	Trans level: By ATC		Trans alt: 10000'		MSA BAG VOR	



Gnd speed-Kts	70	90	100	120	140	160	
ILS GS or LOC Descent Angle	3.07°	380	489	543	652	760	
MAP at D0.6 IZIR							

PANS OPS	<b>Military</b>				STRAIGHT-IN LANDING RWY 03			CIRCLE-TO-LAND				
	Missed apch climb gradient mim 3.62% up to 7400'											
	ILS				LOC (GS out)							
	DA(H) 2935' (200')				MDA(H) 3080' (345')							
ALS out				ALS out								
A			800m		1600m		Max Kts	MDA(H)		VIS		
B			800m		1200m		100	3270' (503')		2000m		
C	800m		1200m		1200m		135	3390' (623')		2000m		
D					2000m		180	3620' (853') I		4000m		
							205	3990' (1223') I		4800m		

LTAE  
MURTED

JEPPESEN  
14 APR 17  
Eff 27 Apr **42-1**

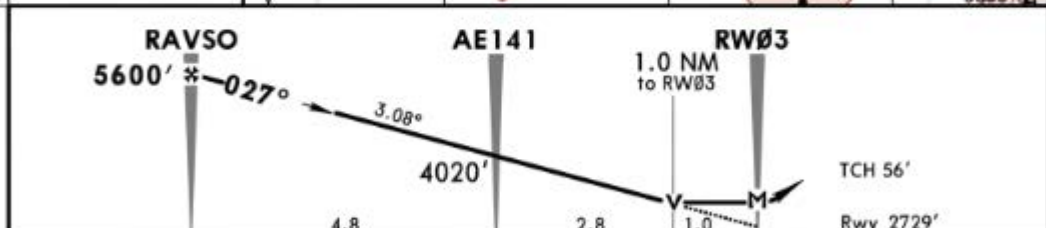
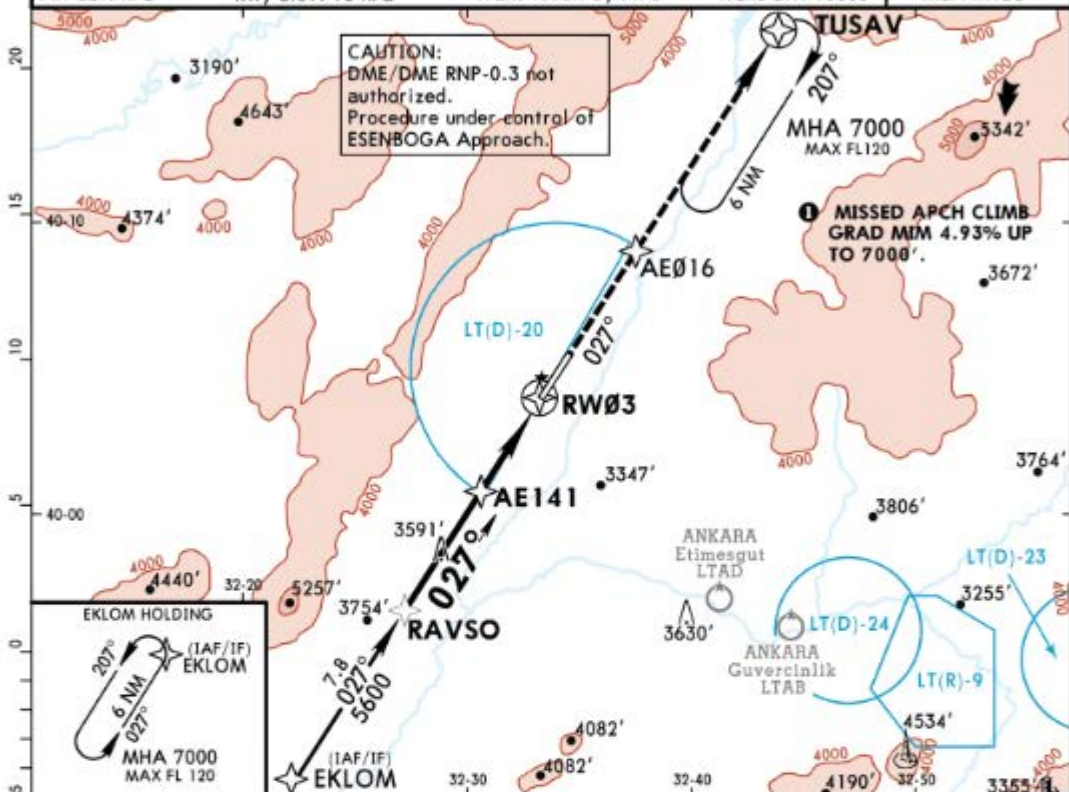
ANKARA, TURKEY  
ORNAV (GNSS) Rwy 03

ATIS 127.225		ESENBOGA Approach (R) 119.1    119.6		*MURTED Tower/RAPCON 122.1	
-----------------	--	---	--	-------------------------------	--

RNAV	Final Apch Crs <b>027°</b>	Minimum Alt <b>RAVSO</b> 5600' (2871')	RNAV MDA(H) 3100' (371')	Apt Elev 2767' Rwy 2729'	7700'
------	-------------------------------	--	--------------------------------	-----------------------------	-------

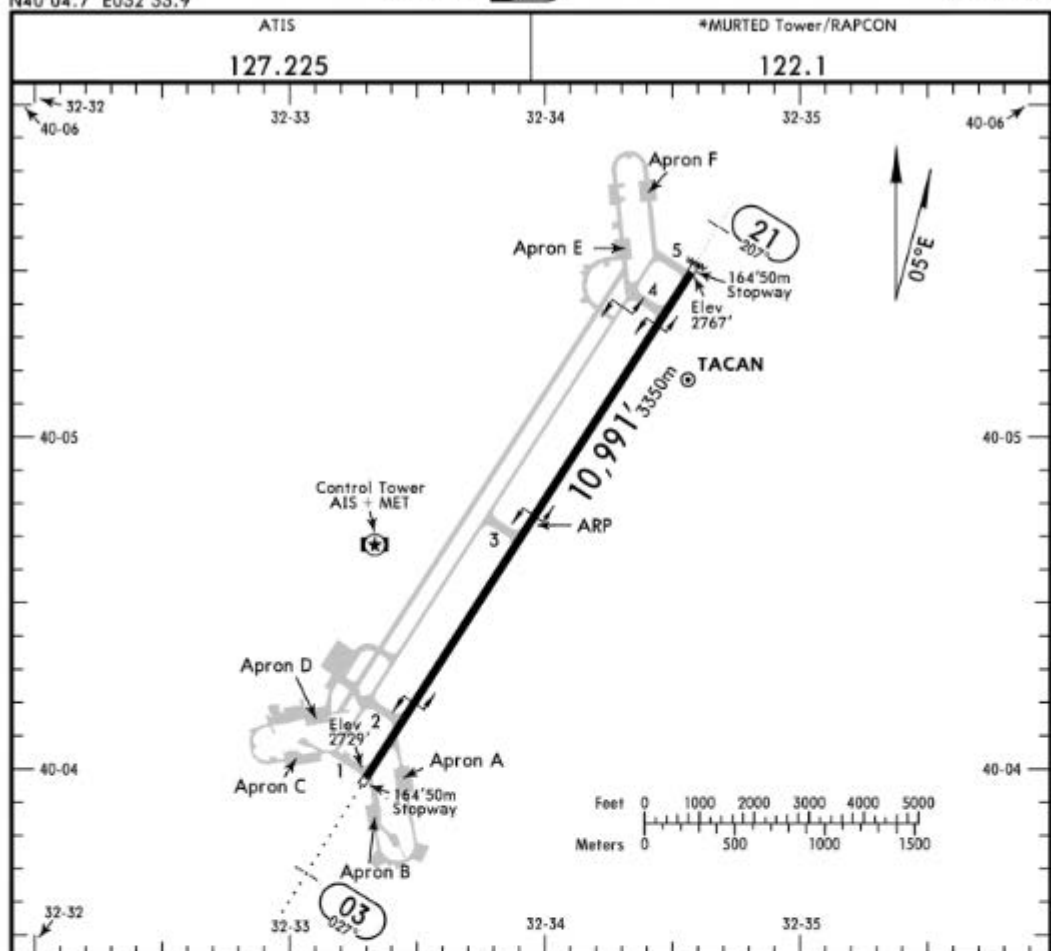
**MISSED APCH: Proceed AE016 then direct to TUSAV climb 7000' or above and hold.**

Alt Set: hPa	Rwy Elev: 96 hPa	Trans level: By ATC	Trans alt: 10000'	MSA RW03
--------------	------------------	---------------------	-------------------	----------



Gnd speed-Kts	70	90	100	120	140	160	HIALS PAPI PAPI	AE016 ↑
Descent Angle	3.08°	381	490	545	654	872		

<b>Military</b> STRAIGHT-IN LANDING RWY 03 LNNAV Missed apch climb gradient min 4.93% up to 7000' MDA(H) <b>3100'</b> (371')			CIRCLE-TO-LAND		
		ALS out	Max Kts	MDA(H)	VIS
A	800m	1600m	100	3270' (503')	2000m
B			135	3390' (623')	2000m
C	1200m	2000m	180	3620' (853') <b>■</b>	4000m
D			205	3990' (1223') <b>■</b>	4800m



**ADDITIONAL RUNWAY INFORMATION**

RWY				USABLE LENGTHS		TAKE-OFF	WIDTH
	HIRL	HIALS	PAPI (3.0°)	Threshold	Glide Slope		
03			PAPI (3.0°)		10,019' 3054m		148'
21	HIRL	HIALS	PAPI (2.7°)				45m

**Standard**

**TAKE-OFF**

	Low Visibility Take-off	Day: RL or RCLM Night: RL	Adequate vis ref (Day only)
A			
B			
C	RVR 300m	400m	500m
D			

LTAE  
MURTED

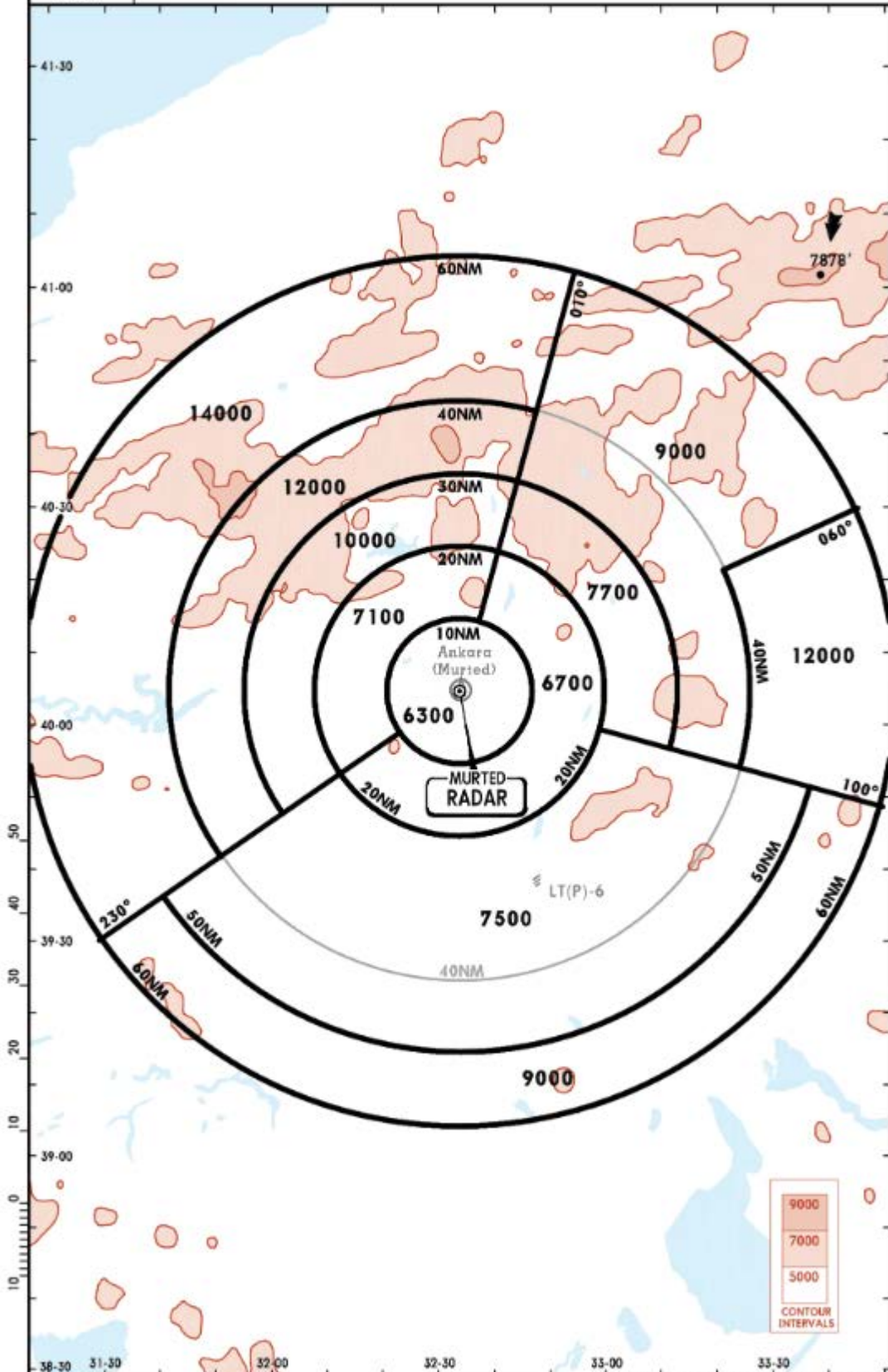
JEPPESEN  
20 JAN 17 40-1R

ANKARA, TURKEY

Eff 2 Feb RADAR MINIMUM ALTITUDES

Apt Elev  
2767'

Alt Set: hPa Trans level: By ATC Trans alt: 10000'



CHANGES: Apt name.

© JEPPESEN, 2014, 2017. ALL RIGHTS RESERVED.