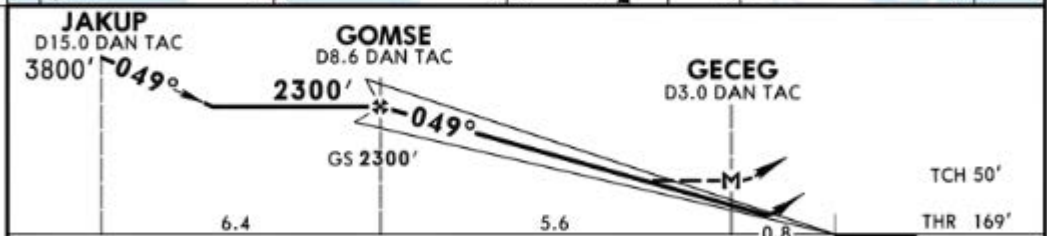


LTAG/UAB
INCIRLIK AB

JEPPESEN
1 JUN 18 (11-1) TACAN Azimuth
Required

ADANA, TURKEY
ILS or LOC Rwy 05

ATIS 129.75		INCIRLIK Approach (R) 128.0 126.5		INCIRLIK Tower 122.1 129.4		Ground 121.9 123.02															
LOC IDAN 109.3	Final Apch Crs 049°	GS GOMSE 2300' (2131')	ILS DA(H) 369' (200')	Apt Elev 232' THR 169'		<p>MSA DAN TAC</p>															
<p>MISSED APCH: Climb to 5000' via R-049 DAN TAC to TOSIE and hold. CAUTION: Missed apch requires mim climb of 4.58% (278'/NM) to 5000'</p> <table border="1"> <tr> <td>Gnd speed-Kts</td> <td>60</td> <td>120</td> <td>180</td> <td>240</td> <td>300</td> <td>360</td> </tr> <tr> <td>278'/NM (fpm)</td> <td>279</td> <td>557</td> <td>835</td> <td>1114</td> <td>1392</td> <td>1670</td> </tr> </table>								Gnd speed-Kts	60	120	180	240	300	360	278'/NM (fpm)	279	557	835	1114	1392	1670
Gnd speed-Kts	60	120	180	240	300	360															
278'/NM (fpm)	279	557	835	1114	1392	1670															
Alt Set: MB		Rwy Elev: 6 MB		Trans level: By ATC		Trans alt: 10000'															
1. EMERG SAFE ALT 100 NM 14900'																					



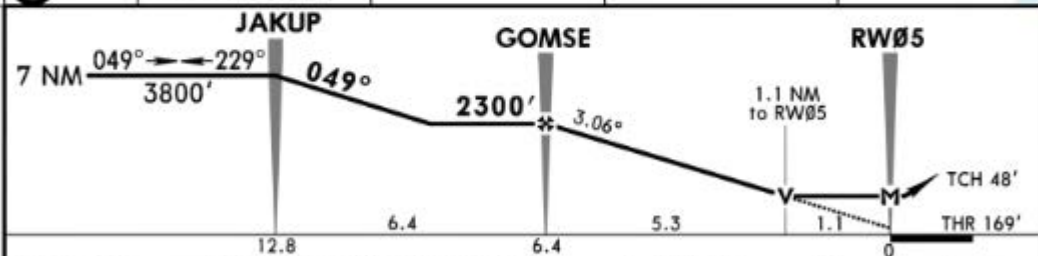
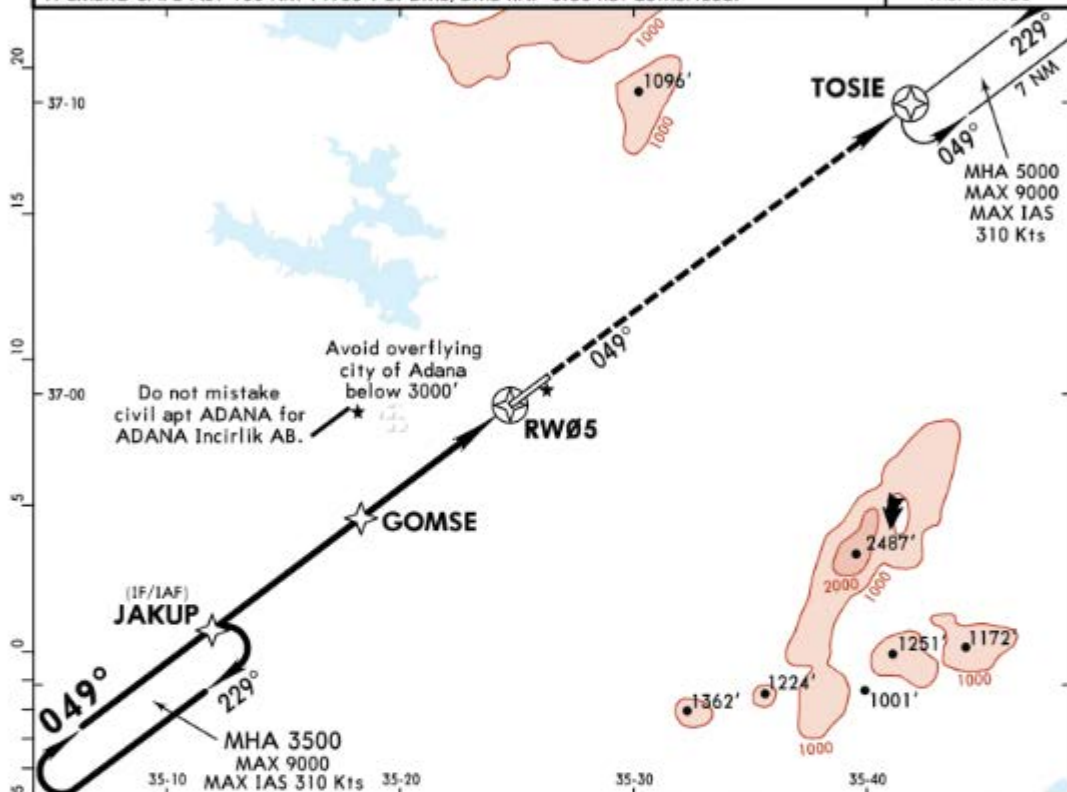
Gnd speed-Kts	70	90	100	120	140	160		5000' ↑ via (108.4) R-049 TOSIE	
GS	3.00°	372	478	531	637	743			849
MAP at GECEG Military									

STRAIGHT-IN LANDING RWY 05				CIRCLE-TO-LAND			
ILS Missed apch climb gradient mim 4.58% (278'/NM) to 5000' DA(H) 369' (200')		LOC (GS out) Missed apch climb gradient mim 4.58% (278'/NM) to 5000' MDA(H) 560' (391')		Not authorized North of rwy			
FULL		ALS out		Max Kts		MDA(H)	
A				100	820	(588')	1600m
B	800m	1200m		135	950	(718')	1600m
C			1200m	180	1180	(948')	4400m
D			2000m	205	1250	(1018')	4800m

CHANGES: Transition level.

© JEPPESEN, 2001, 2018. ALL RIGHTS RESERVED.

BRIEFING STRIP	ATIS	INCIRLIK Approach (R)		INCIRLIK Tower		Ground	
	129.75	128.0	126.5	122.1	129.4	121.9	123.02
RNAV	Final Apch Crs 049°	Minimum Alt GOMSE 2300' (2131')	LNAV MDA(H) 580' (411')	Apt Elev 232'	THR 169'	7000'	
MISSED APCH: Climb to 5000' direct TOSIE and hold, continue climb in hold to 5000'.							
Alt Set: MB		Rwy Elev: 6 MB	Trans level: By ATC		Trans alt: 10000'		MSA RW05
1. EMERG SAFE ALT 100 NM 14900'. 2. DME/DME RNP-0.30 not authorized.							



Gnd speed-Kts	70	90	100	120	140	160	HIALS REIL PAPI	5000'	D → TOSIE
Descent Angle	3.06°	379	487	541	650	758			
MAP at RW05									

TERPS	Military STRAIGHT-IN LANDING RWY 05				CIRCLE-TO-LAND	
	LNAV				Not authorized	
	MDA(H) 580' (411')				North of rwy	
		ALS out		Max Kts	MDA(H)	
	A	750m	1600m	90	700' (468')	1600m
B	800m		120	800' (568')	1600m	
C			140	960' (728')	3200m	
D	1200m	1900m	165	1060' (828')	4400m	

LTAG/UAB
INCIRLIK AB

JEPPESEN

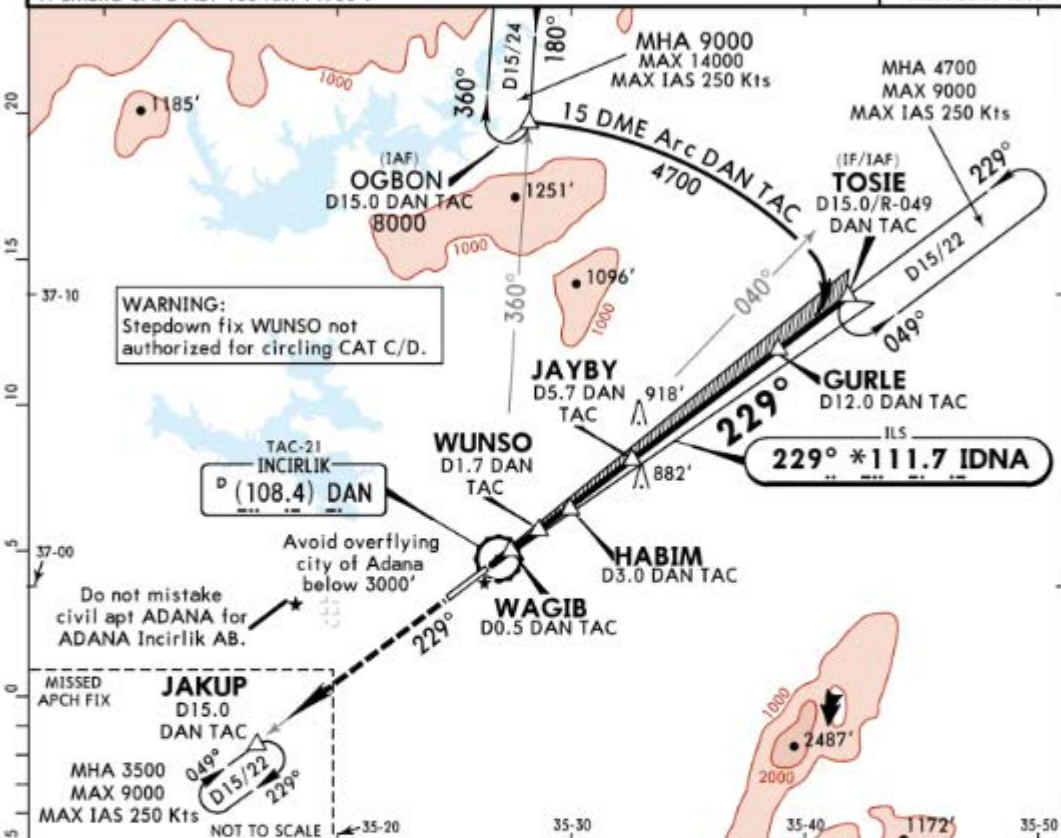
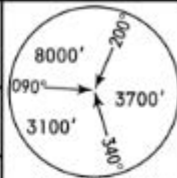
1 JUN 18

(11-2)

TACAN Azimuth
Required

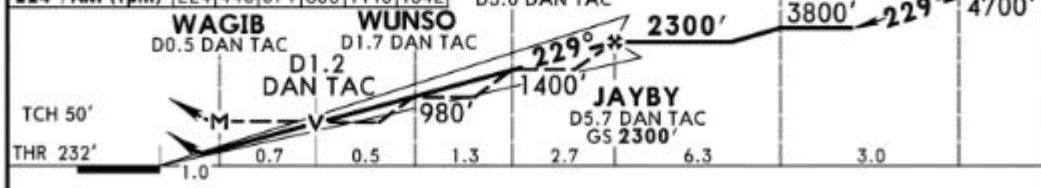
ADANA, TURKEY
ILS or LOC Rwy 23

BRIEFING STRIP		ATIS 129.75	INCIRLIK Approach (R) 128.0 126.5	INCIRLIK Tower 122.1 129.4	Ground 121.9 123.02
LOC IDNA *111.7	Final Apch Crs 229°	GS JAYBY 2300' (2068')	ILS DA(H) 432' (200')	Apt Elev 232'	THR 232'
MISSED APCH: Climb to 3500' via R-229 DAN TAC to JAKUP and hold.					
Alt Set: MB		Rwy Elev: 8 MB	Trans level: By ATC		Trans alt: 10000'
					MSA DAN TAC



CAUTION: ILS Missed apch requires min climb of 3.68% (224'/NM) to 3500'

Gnd speed-Kts	60	120	180	240	300	360
224'/NM (fpm)	224	448	671	895	1119	1342



Gnd speed-Kts	70	90	100	120	140	160	
GS	3.00°	372	478	531	637	743	849

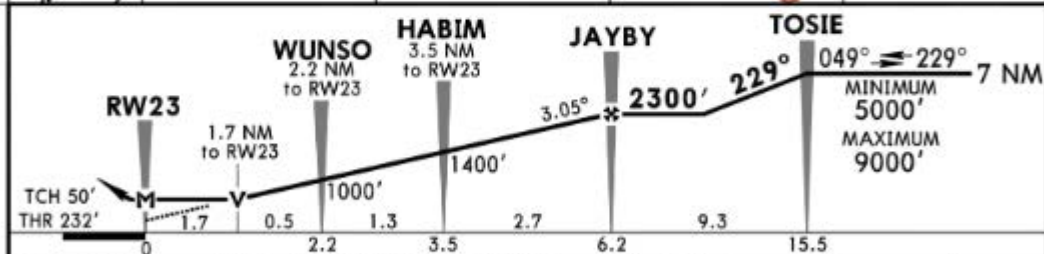
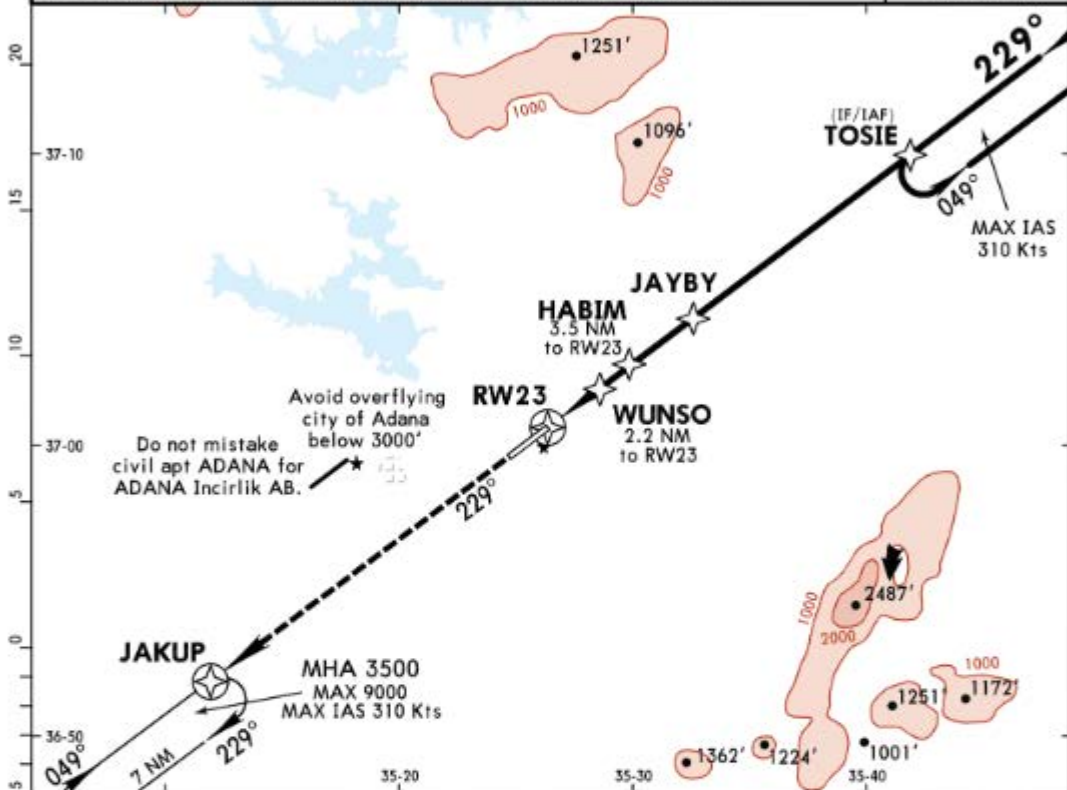
MAP at WAGIB

Military				STRAIGHT-IN LANDING RWY 23		CIRCLE-TO-LAND	
ILS Missed apch climb gradient min 3.68% (224'/NM) to 3500'				LOC (GS out)		Not authorized North of rwy	
DA(H) 432' (200')				MDA(H) 830' (598')			
FULL		ALS out		ALS out		Max Kts	MDA(H)
A						100	830' (598') 2000m
B				1200m	2000m	135	950' (718') 2000m
C	800m	1200m		1600m	2400m	180	1180' (948') 4400m
D				2000m	2800m	205	1250' (1018') 4800m

CHANGES: Transition level.

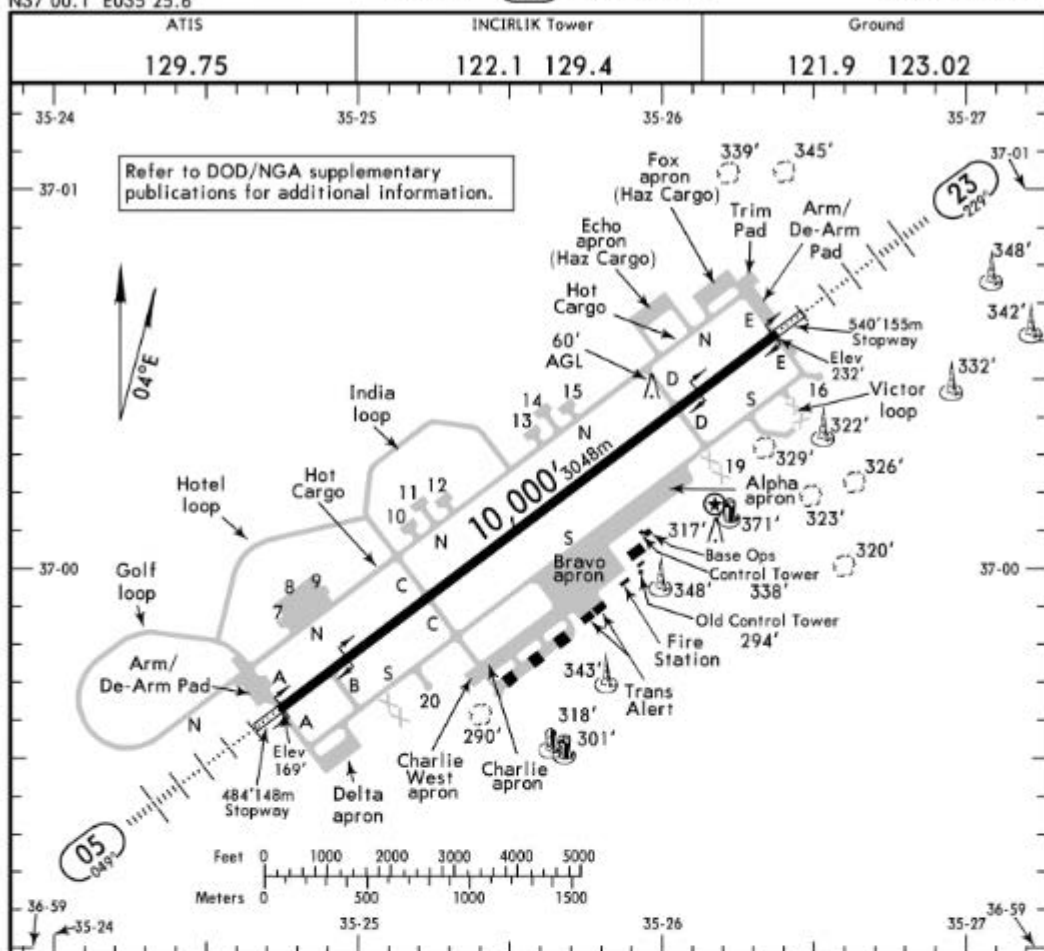
© JEPPESEN, 2001, 2018. ALL RIGHTS RESERVED.

ATIS 129.75		INCIRLIK Approach (R) 128.0 126.5		INCIRLIK Tower 122.1 129.4		Ground 121.9 123.02	
RNAV	Final Apch Crs 229°	Minimum Alt JAYBY 2300' (2068')		LNAV MDA(H) 840' (608')	Apt Elev 232'	7000'	
MISSED APCH: Climb to 3500' direct JAKUP and hold.							
Alt Set: MB		Rwy Elev: 8 MB		Trans level: By ATC		Trans alt: 10000'	
1. EMERG SAFE ALT 100 NM 14900'. 2. DME/DME RNP-0.30 not authorized.						MSA RW23	



Gnd speed-Kts	70	90	100	120	140	160	HIALS REIL PAPI PAPI	3500'	D	JAKUP
Descent Angle	3.05°	378	486	540	648	755				
MAP at RW23										

Military						STRAIGHT-IN LANDING RWY 23			CIRCLE-TO-LAND Not authorized North of rwy		
LNAV						ALS out			Max Kts		
MDA(H) 840' (608')									MDA(H)		
A	750m					1600m			90	840' (608') 1600m	
B	800m								120		
C						2800m			140	960' (728') 3200m	
D	2100m								165	1060' (828') 4400m	



ADDITIONAL RUNWAY INFORMATION

RWY						USABLE LENGTHS		TAKE-OFF	WIDTH
	HIRL	HIALS	SFL	REIL	PAPI	RVR	Threshold		
05 ① 23	HIRL	HIALS	SFL	REIL	PAPI	RVR		9198' 2804m	148'
	HIRL	HIALS	REIL	PAPI		RVR		8910' 2716m	45m

① Rwy grooved.

Military

TAKE-OFF & IFR DEPARTURE PROCEDURE

All Rwys

With minimum climb of 240'/NM to 3300'

	Adequate Vis Ref	STD
1 & 2 Eng	1/4	1
3 & 4 Eng		1/2

OMNIDIRECTIONAL IFR DEPARTURE PROCEDURE

This portion was designed to show the minimum climb gradient required when eliminating the mountains to the North. (Between 265° clockwise to 022°)

RWY 05: Cross DER at or above 16' AGL. Climb on heading 049° to 1100' MSL. Remain between 030° CW 070°. Minimum climb rate 207 ft/NM. (3.4%) until passing 900' MSL.

RWY 23: Cross DER at or above 16' AGL. Climb on heading 229° to 700' MSL, then turn on course. Remain between 210° CW to 250°.

TAKE-OFF OBSTACLES: Rwy 23, hangar 52 2649' from DER 1168' right of centerline, 50' AGL/217' MSL. Batch plant 1889' from DER 875' left of centerline, 40' AGL/201' MSL.

STRAIGHT-IN RWY		A	B	C	D
05	① ILS	369' (200')	369' (200')	369' (200')	369' (200')
	FULL/Limited	800m	800m	800m	800m
	ALS out	1200m	1200m	1200m	1200m
	①② LOC	560' (391')	560' (391')	560' (391')	560' (391')
		1100m	1100m	1200m	1200m
	ALS out	1600m	1600m	1800m	2000m
23	① LOC	560' (391')	560' (391')	560' (391')	560' (391')
		1300m	1300m	1500m	1500m
	ALS out	2000m	2000m	2200m	2200m
	② RNAV	580' (411')	580' (411')	580' (411')	580' (411')
		1200m	1200m	1200m	1200m
	ALS out	1600m	1600m	1900m	1900m
05	① ILS	432' (200')	432' (200')	432' (200')	432' (200')
	FULL/Limited	800m	800m	800m	800m
	ALS out	1200m	1200m	1200m	1200m
	② LOC	830' (598')	830' (598')	830' (598')	830' (598')
		1500m	1500m	2000m	2000m
	ALS out	2000m	2000m	2400m	2800m
	LOC	830' (598')	830' (598')	830' (598')	830' (598')
		2200m	2200m	2400m	2400m
23	ALS out	2900m	2900m	3100m	3100m
	③ RNAV	840' (608')	840' (608')	840' (608')	840' (608')
		1500m	1500m	2100m	2100m
	ALS out	1600m	1600m	2800m	2800m

① Missed apch climb gradient mim 4.58% (278'/NM) to 5000'.

② Continuous Descent Final Approach.

③ Missed apch climb gradient mim 3.68% (224'/NM) to 3500'.

CIRCLE-TO-LAND ①	100 KT	135 KT	180 KT	205 KT
After RNAV 05	700' (468') V1600m	800' (568') V1600m	960' (728') V3200m	1060' (828') V4400m
After RNAV 23	840' (608') V1600m	840' (608') V1600m	960' (728') V3200m	1060' (828') V4400m
After ILS or LOC 05	820' (588') ② V1600m	950' (718') ② V1600m	1180' (948') V4400m	1250' (1018') V4800m
After ILS or LOC 23	830' (598') ② V2000m	950' (718') ② V2000m	1180' (948') V4400m	1250' (1018') V4800m

① Not authorized North of rwy.

② Or higher minimums of preceding straight-in approach.

TAKE-OFF RWY 05, 23

		With minimum climb of 240'/NM to 3300'	
		Adequate Vis Ref	STD
1 & 2 Eng	400m		1600m
3 & 4 Eng			800m

OMNIDIRECTIONAL DEPARTURE OVERVIEW ALL RWYS

