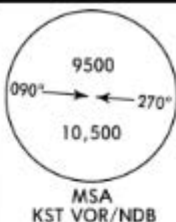
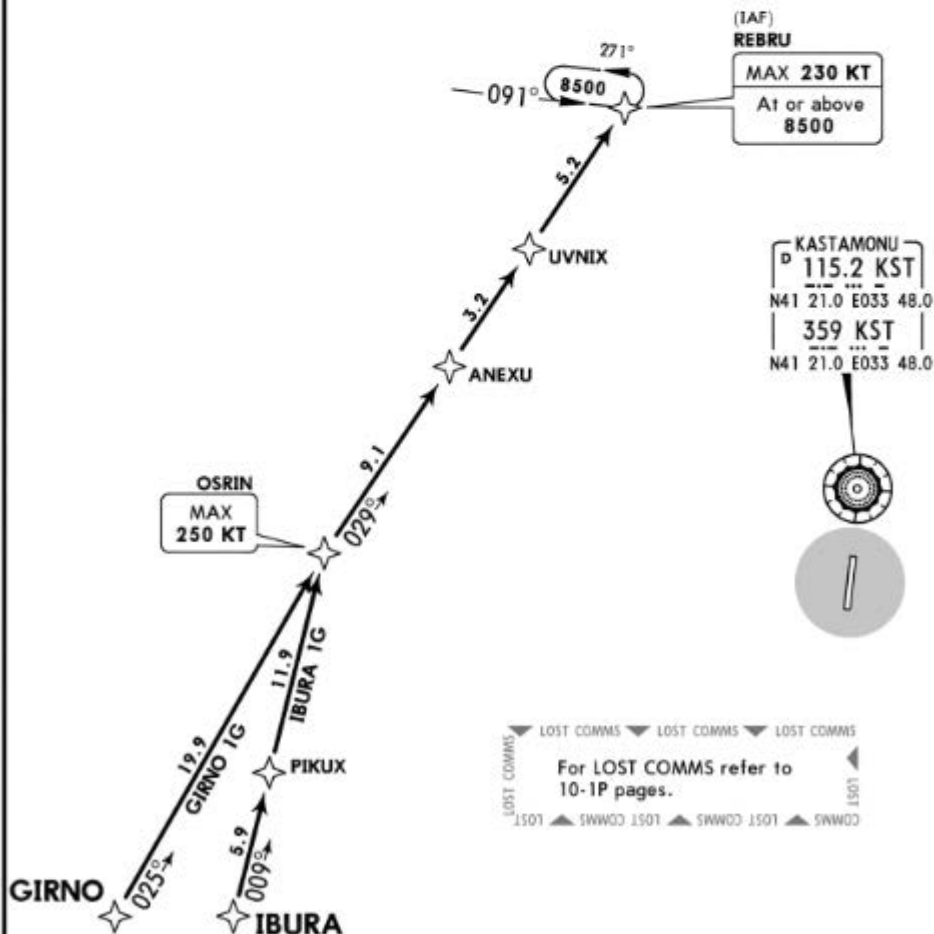
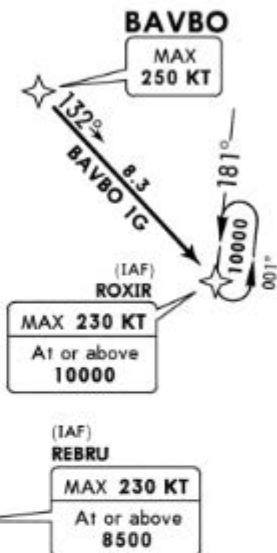


Apt Elev
3524'

- Alt Set: hPa Trans level: By ATC Trans alt: 12000'
1. RNAV (GNSS).
 2. RNP 1 required, otherwise advice ATC.
 3. At first contact with Kastamonu APP, report if unable to comply the RNAV STAR.
 4. Only available for traffic able to execute the RNAV (GNSS) approach procedure for Rwy 18.
 5. For initial, intermediate and final approaches to RWY 18 see RNAV (GNSS) Rwy 18.
 6. Descend as cleared.



**BAVBO 1G [BAVB1G]
GIRNO 1G [GIRN1G], IBURA 1G [IBUR1G]
RWY 18 RNAV ARRIVALS**

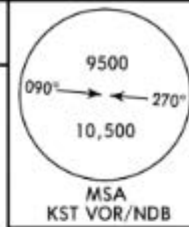


LOST COMMS
For LOST COMMS refer to 10-1P pages.
LOST COMMS

STAR	ROUTING
BAVBO 1G	BAVBO (K250-) - ROXIR (K230-; 10000+).
GIRNO 1G	GIRNO - OSRIN (K250-) - ANEXU - UVNIX - REBRU (K230-; 8500+).
IBURA 1G	IBURA - PIKUX - OSRIN (K250-) - ANEXU - UVNIX - REBRU (K230-; 8500+).

Apt Elev
3524'

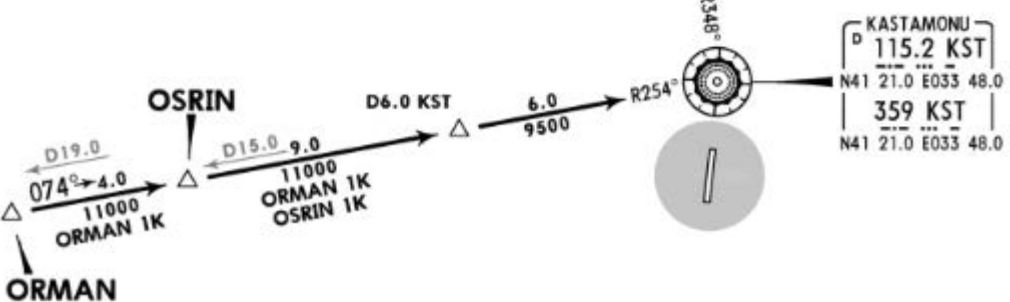
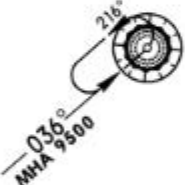
Alt Set: hPa Trans level: By ATC Trans alt: 12000'



INB 1K [INB1K]
ORMAN 1K [ORMA1K]
OSRIN 1K [OSRI1K]
ARRIVALS

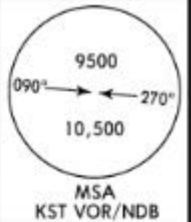


HOLDING OVER
KST

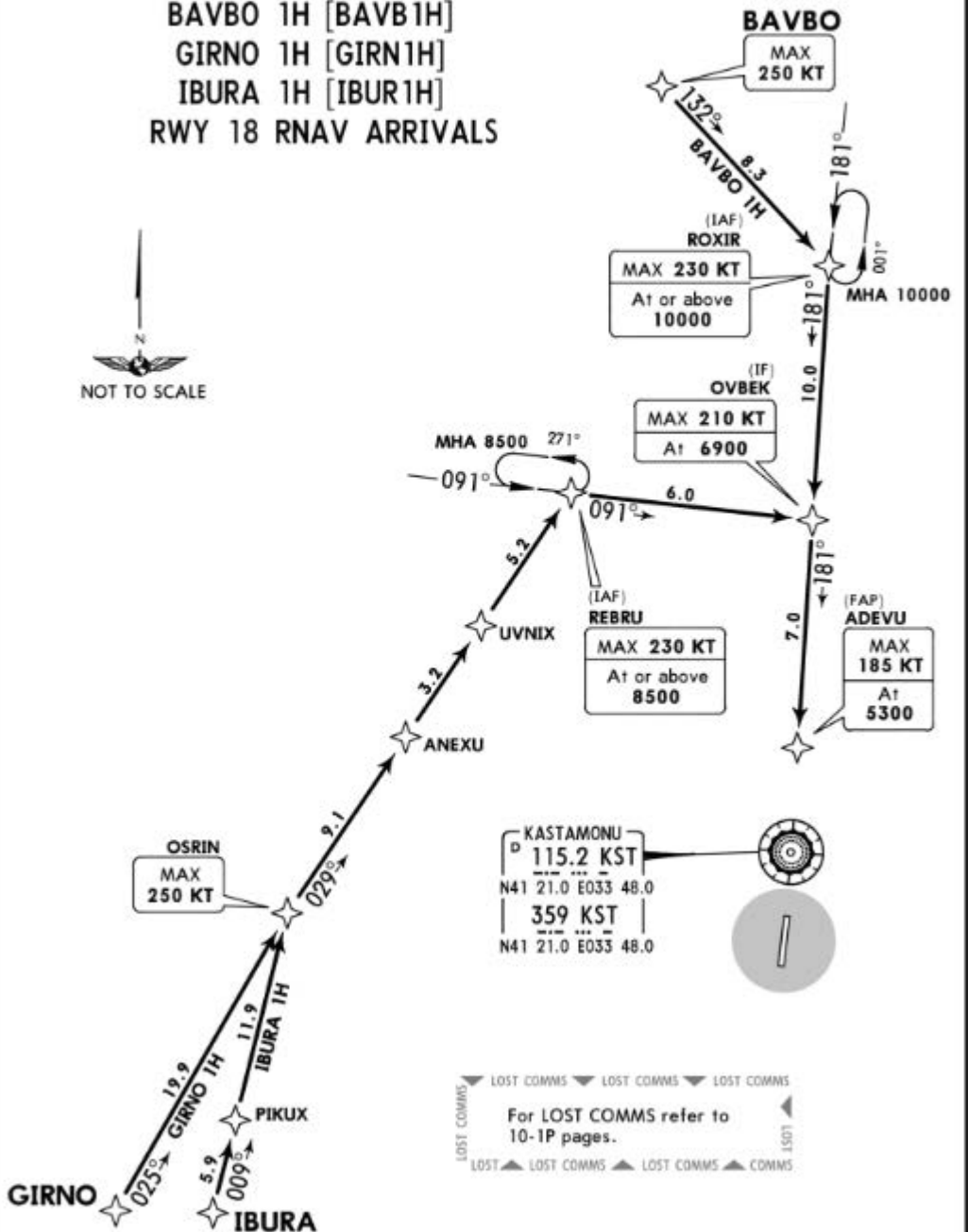


Apt Elev
3524'

- Alt Set: hPa Trans level: By ATC Trans alt: 12000'
1. RNAV (GNSS).
 2. RNP 1 required, otherwise advice ATC.
 3. At first contact with Kastamonu APP, report if unable to comply the RNAV STAR.
 4. Only available for traffic able to execute ILS Z RWY 18.
 5. ATC will clear the aircraft to execute ILS Z RWY 18 approach before ADEVU (FAP).
 6. For final and missed approach phases see ILS Z RWY 18 approach.
 7. Descend as cleared.

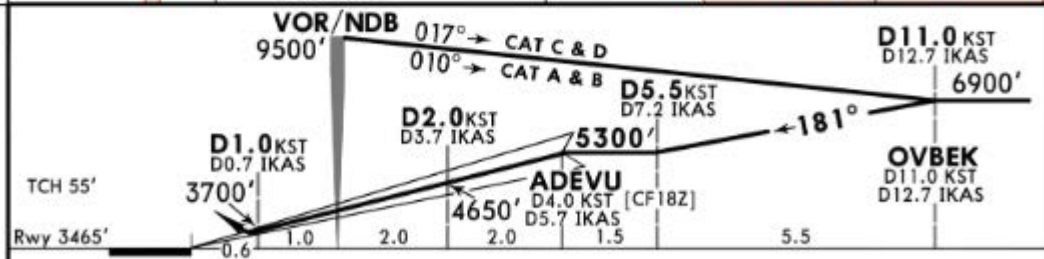
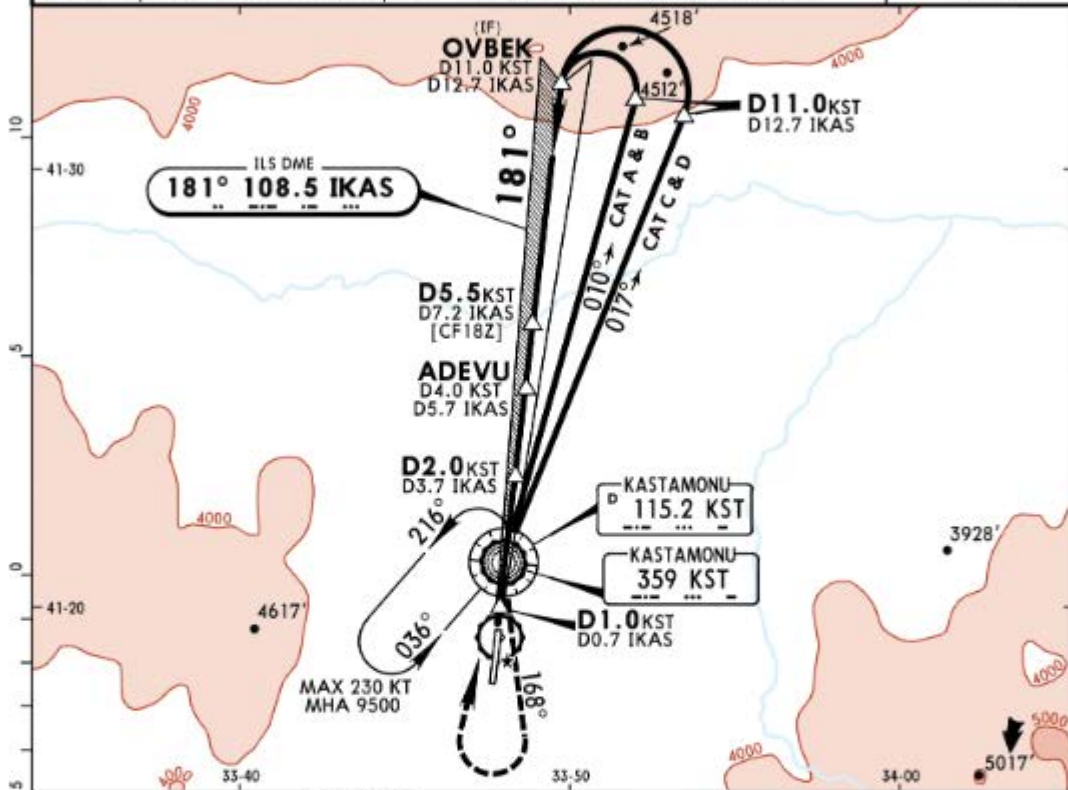


**BAVBO 1H [BAVB1H]
GIRNO 1H [GIRN1H]
IBURA 1H [IBUR1H]
RWY 18 RNAV ARRIVALS**



STAR	ROUTING
BAVBO 1H	BAVBO (K250-) - ROXIR (K230-; 10000+) - OVBK (K210-; 6900) - ADEVU (K185-; 5300).
GIRNO 1H	GIRNO - OSRIN (K250-) - ANEXU - UVNIX - REBRU (K230-; 8500+) - OVBK (K210-; 6900) - ADEVU (K185-; 5300).
IBURA 1H	IBURA - PIKUX - OSRIN (K250-) - ANEXU - UVNIX - REBRU (K230-; 8500+) - OVBK (K210-; 6900) - ADEVU (K185-; 5300).

*KASTAMONU Approach		*KASTAMONU Tower			*Ground
119.5		118.4			121.9
LOC [KAS] 108.5	Final ApcH Crs 181°	GS ADEVU 5300' (1835')	ILS DA(H) Refer to Minimums	Apt Elev 3524'	Rwy 3465'
MISSED APCH: Climb on R-168 (168° from NDB). Cross 4800' then turn RIGHT climbing to 9500' to VOR/NDB and hold. If unable to reach 9500' at VOR/NDB intercept R-017 (017° from NDB). Cross 8000' then turn LEFT climbing to 9500' to VOR/NDB and hold. MAX 185 KT until inbound to VOR/NDB.					
Alt Set: hPa Rwy Elev: 121 hPa Trans level: By ATC Trans alt: 12000'					
1. DME required. 2. VOR or NDB required. 3. Baseturn restricted to MAX 185 KT.					



Gnd speed-Kts	70	90	100	120	140	160	HIALS PAPI 185 KT MAX 4800' LT	KST 168° on 115.2 of R-168 359
ILS GS	3.00°	372	478	531	637	849		

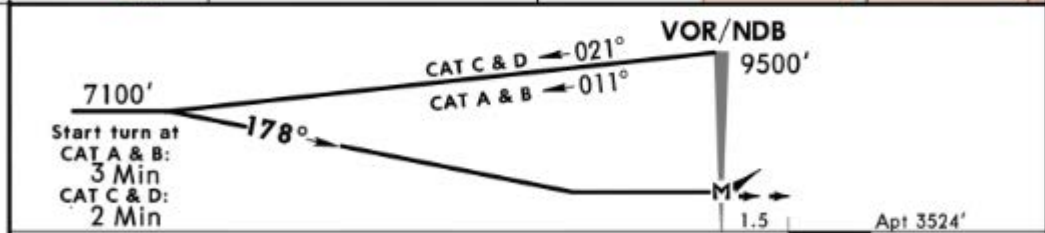
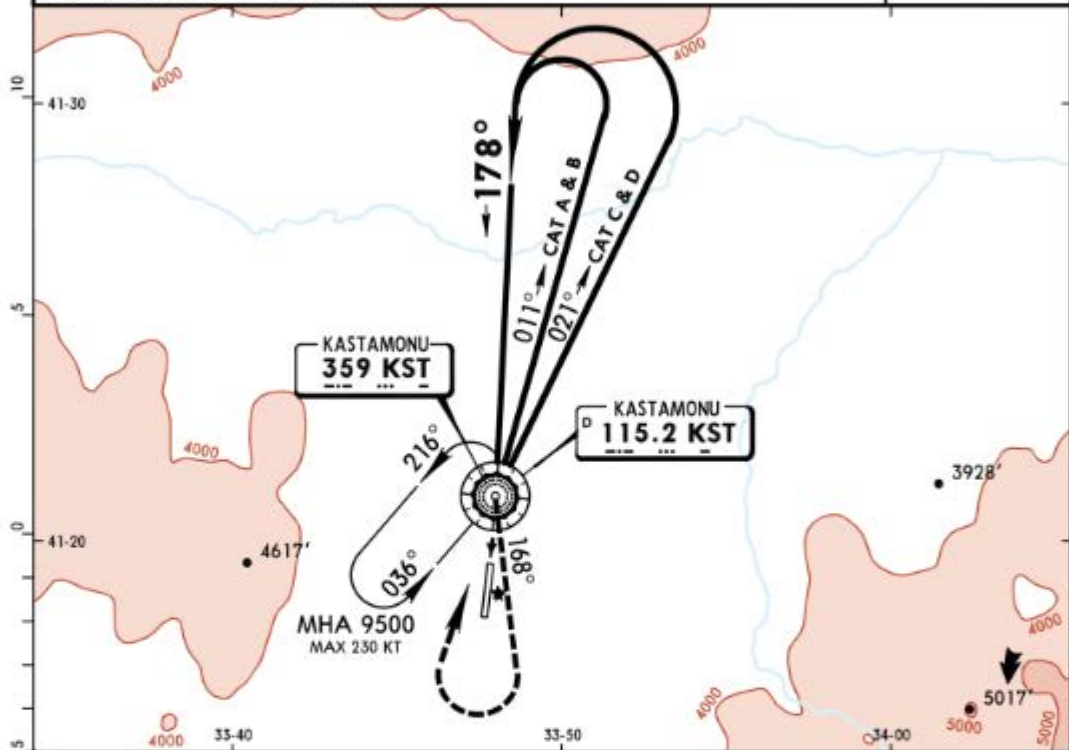
Standard						STRAIGHT-IN LANDING RWY 18			CIRCLE-TO-LAND		
Missed apch climb gradient mim 4.1%		Missed apch climb gradient mim 3.6%		Missed apch climb gradient mim 2.5%							
DA(H) 3670' (205')		DA(H) 3800' (335')		DA(H) 4100' (635')							
FULL		ALS out		FULL		ALS out		FULL		ALS out	
PANS OPS	A								Max Kts	MDA(H)	VIS
	B							RVR 1500m	100	4500' (976')	1500m
	C	RVR 1000m	RVR 1200m	RVR 1300m	RVR 1500m			RVR 2400m	135	4500' (976')	1600m
	D								180	4500' (976')	2400m
									205	5200' (1676')	3600m

LTAL/KFS
KASTAMONU

JEPPESEN
4 AUG 17 **13-2** Eff 17 Aug

KASTAMONU, TURKEY
VOR or NDB

*KASTAMONU Approach			*KASTAMONU Tower			*Ground	
119.5			118.4			121.9	
VOR KST 115.2	NDB KST 359	Final Apch Crs 178°	Minimum Alt No FAF	MDA(H) Refer to Minimums	Apt Elev 3524'		
MISSED APCH: Climb on R-168 (168° from NDB). Cross 5600' then turn RIGHT climbing to 9500' to VOR/NDB and hold. If unable to reach 9500' at VOR/NDB intercept R-021 (021° from NDB). Cross 8400' then turn LEFT to 9500' to VOR/NDB and hold. MAX 185 KT until inbound to VOR/NDB.							
Alt Set: hPa		Apt Elev: 123 hPa	Trans level: By ATC		Tans alt: 12000'		



Lighting - Refer to Airport Chart	185 KT MAX	5600'	KST on 115.2 or R-168	168° from KST 359
MAP at VOR/NDB		LT		

Standard		STRAIGHT-IN LANDING		CIRCLE-TO-LAND	
				Max Kts	MDA(H) VIS
A	NOT AUTHORIZED		100	4800' (1276')	1500m
B			135	4800' (1276')	1600m
C			180	4800' (1276')	2400m
D			205	5200' (1676')	3600m

PANS OPS

CHANGES: Circling minimums.

© JEPPESEN, 2014, 2017. ALL RIGHTS RESERVED.

1. GENERAL

1.1. OTHER INFORMATION

1.1.1. GENERAL

Birds.

1.1.2. ENGINE TESTING

Engine testing shall be performed on Engine Test Area. The operator shall obtain a permission from APT authority before performing engine testing. After the permission obtained the operator shall contact ATC unit via 118.4 MHz frequency.

2. ARRIVAL

2.1. COMMUNICATION FAILURE PROCEDURE

2.1.1. RF FOR IFR FLIGHTS EXECUTING RNAV (GNSS) TO RWY 18

At or after FAF (ADEVU)

Continue approach. Execute the RNAV (GNSS) or ILS procedure to land.

Before FAF (ADEVU)

- ACFT at or above 11000':

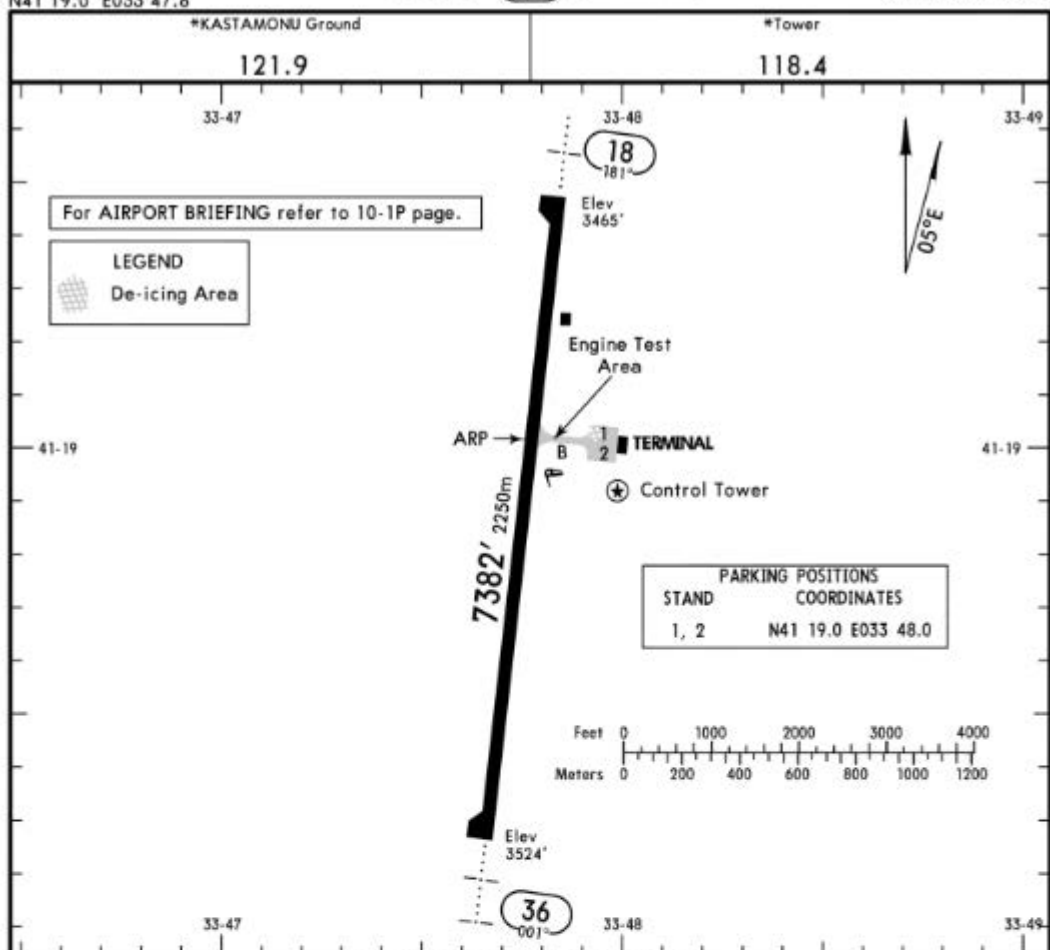
Follow the flight plan route using last assigned and acknowledged FL/altitude. After passing/passed GIRNO, IBURA or BAVBO proceed direct to KST VOR or NDB descending/maintaining 11000'.

Leave 11000' at KST VOR or NDB. Execute Instrument Approach Procedure and land.

- ACFT below 11000':

Following the RNAV (GNSS) procedure laterally, climb or maintain 11000'.

Then proceed direct to KST VOR or NDB. Leave 11000' at KST VOR or NDB. Execute Instrument Approach Procedure and land.



ADDITIONAL RUNWAY INFORMATION

RWY						USABLE LENGTHS		TAKE-OFF	WIDTH	
						LANDING	BEYOND			
18	36	HIRL (60m)	HIALS	SFL	PAPI-L (3.0°)	RVR	Threshold	Glide Slope	1	148' 45m
								6349' 1935m		

1 TAKE-OFF RUN AVAILABLE

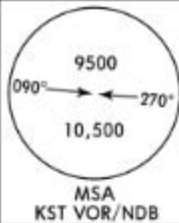
RWY 18: From rwy head 7382' (2250m)
twy B int 4626' (1410m)

RWY 36: From rwy head 7382' (2250m)
twy B int 2756' (840m)

Standard

TAKE-OFF

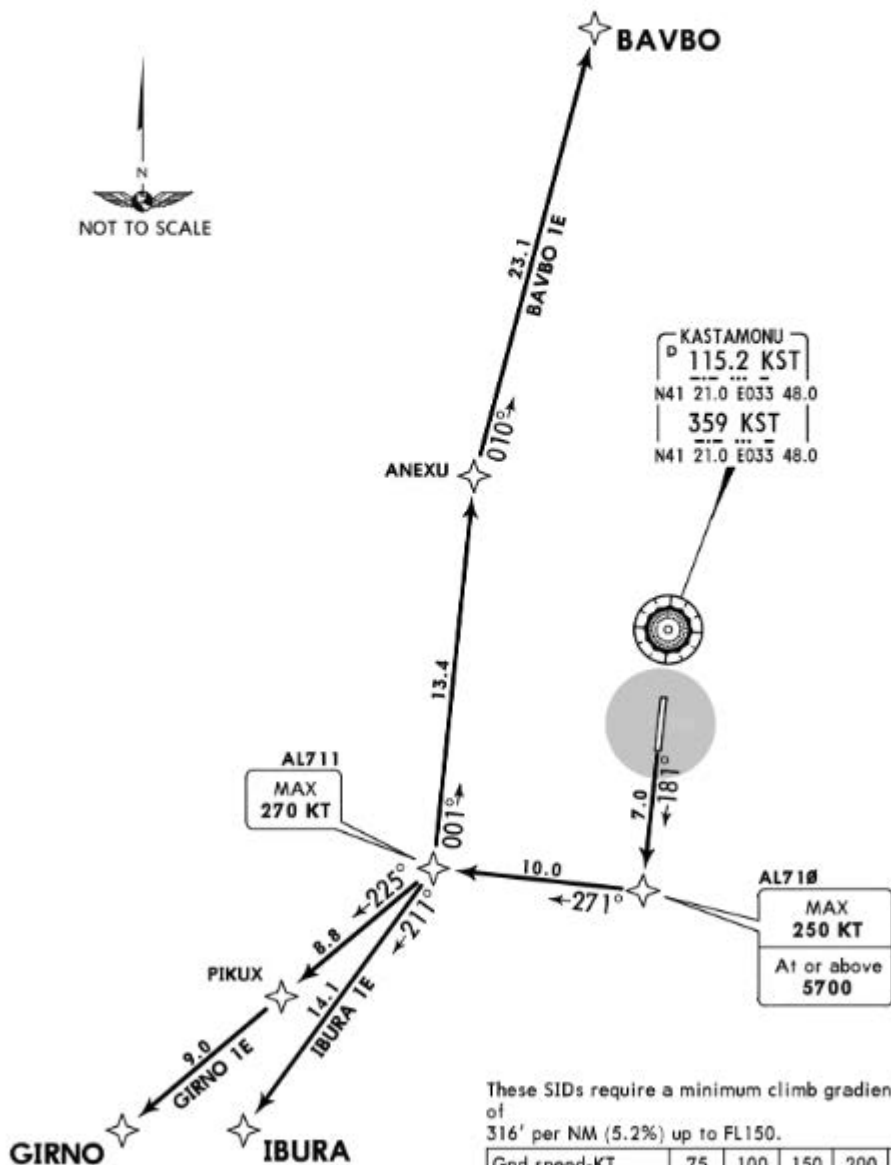
	Low Visibility Take-off		Adequate vis ref (Day only)
	Day: RL & RCLM Night: RL	Day: RL or RCLM Night: RL	
A			
B			
C	RVR 300m	400m	500m
D			



Apt Elev
3524'

Trans level: By ATC Trans alt: 12000'
1. RNAV (GNSS).
2. RNP 1 required, otherwise advice ATC.

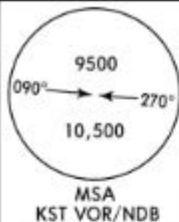
BAVBO 1E [BAVB1E]
GIRNO 1E [GIRN1E]
IBURA 1E [IBUR1E]
RWY 18 RNAV DEPARTURES



These SIDs require a minimum climb gradient of 316' per NM (5.2%) up to FL150.

Gnd speed-KT	75	100	150	200	250	300
316' per NM	395	527	790	1053	1317	1580

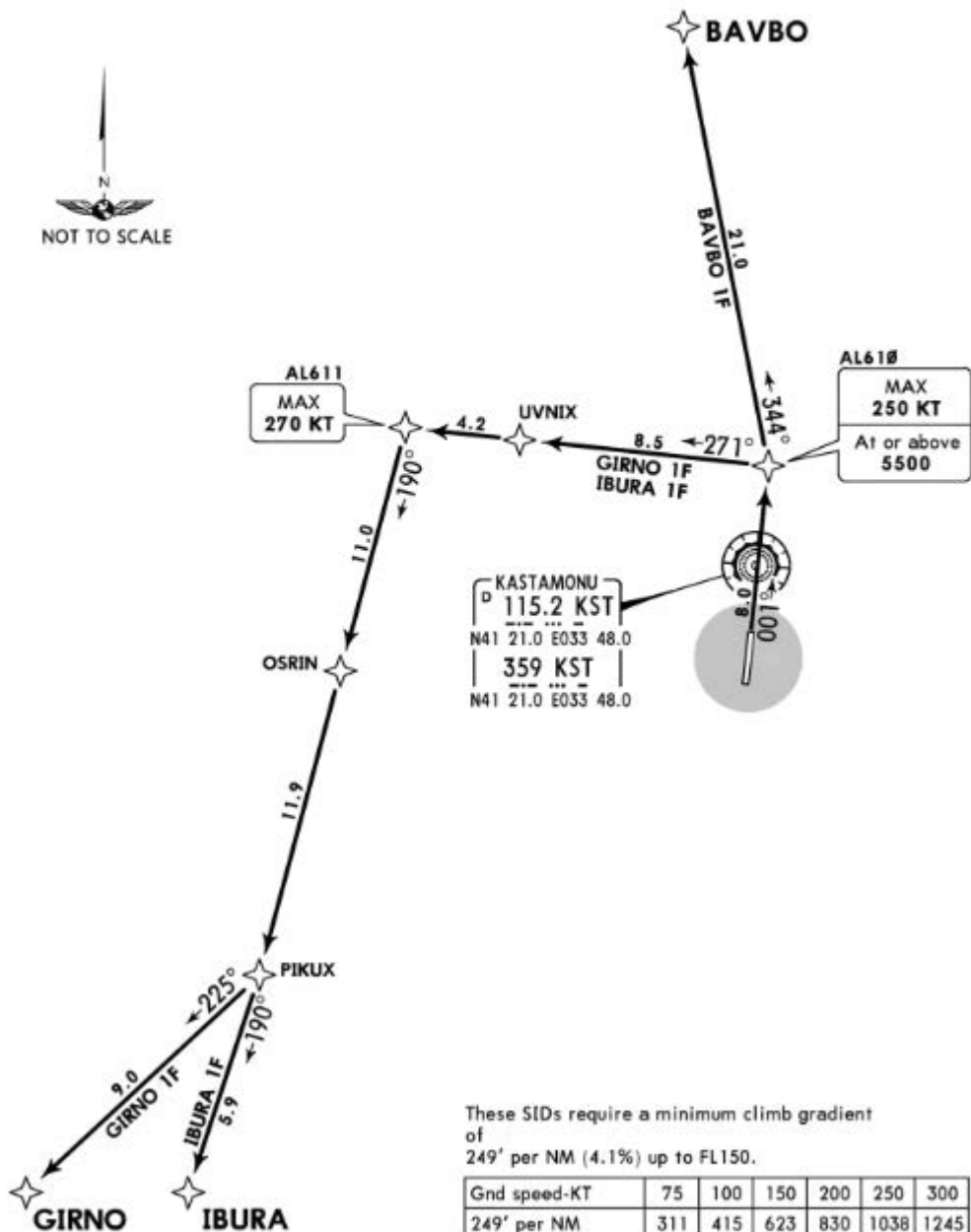
SID	ROUTING
BAVBO 1E	Climb on 181° track to AL710, turn RIGHT to AL711, turn RIGHT to ANEXU, turn RIGHT to BAVBO.
GIRNO 1E	Climb on 181° track to AL710, turn RIGHT to AL711, turn LEFT to PIKUX, then to GIRNO.
IBURA 1E	Climb on 181° track to AL710, turn RIGHT to AL711, turn LEFT to IBURA.



Apt Elev
3524'

Trans level: By ATC Trans alt: 12000'
1. RNAV (GNSS).
2. RNP 1 required, otherwise advice ATC.

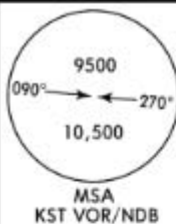
BAVBO 1F [BAVB1F]
GIRNO 1F [GIRN1F]
IBURA 1F [IBUR1F]
RWY 36 RNAV DEPARTURES



These SIDs require a minimum climb gradient of 249' per NM (4.1%) up to FL150.

Gnd speed-KT	75	100	150	200	250	300
249' per NM	311	415	623	830	1038	1245

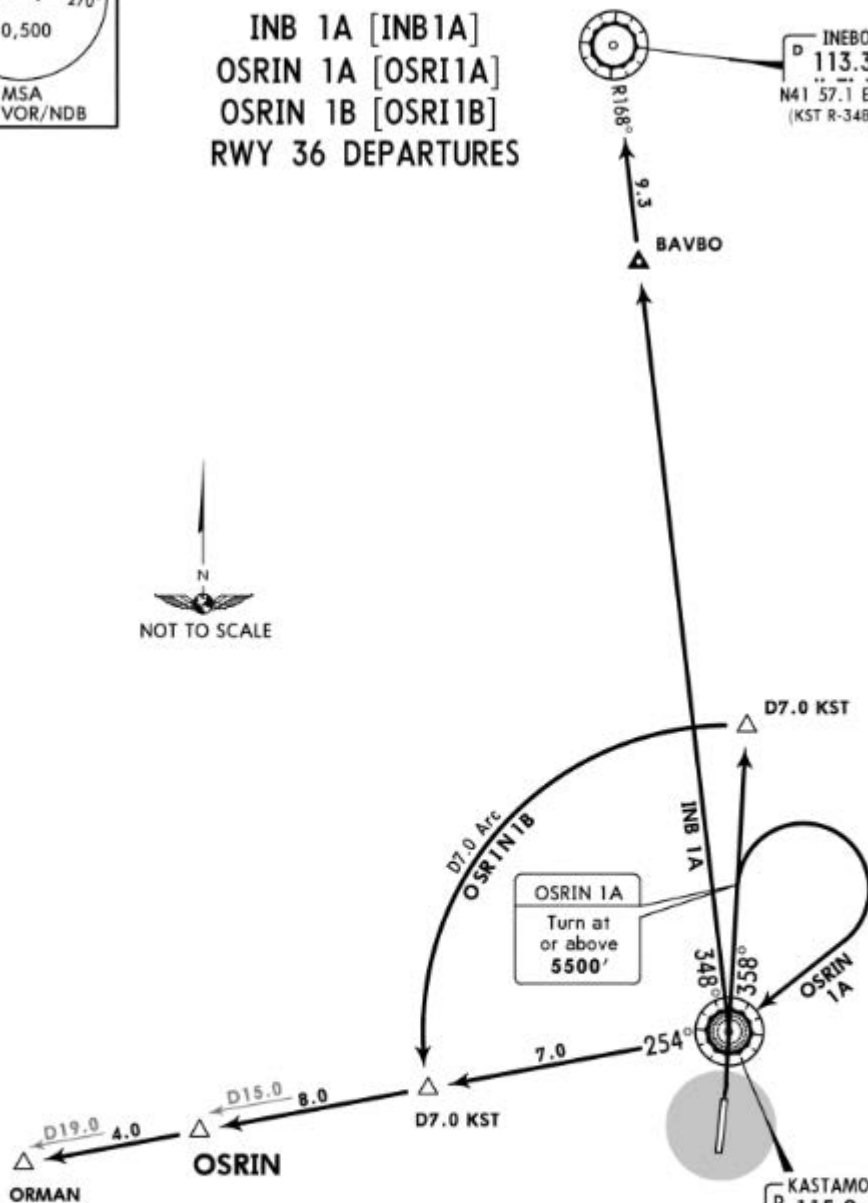
SID	ROUTING
BAVBO 1F	Climb on 001° track to AL610, turn LEFT to BAVBO.
GIRNO 1F	Climb on 001° track to AL610, turn LEFT to UVNIX, then to AL611, turn LEFT to OSRIN, then to PIKUX, turn RIGHT to GIRNO.
IBURA 1F	Climb on 001° track to AL610, turn LEFT to UVNIX, then to AL611, turn LEFT to OSRIN, then to PIKUX, then to IBURA.



Apt Elev
3524'

Trans level: By ATC Trans alt: 12000'

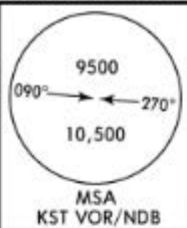
INB 1A [INB1A]
OSRIN 1A [OSR11A]
OSRIN 1B [OSR11B]
RWY 36 DEPARTURES



These SIDs require a minimum climb gradient of 304' per NM (5%) up to 12000'.

Gnd speed-KT	75	100	150	200	250	300
304' per NM	380	507	760	1013	1267	1520

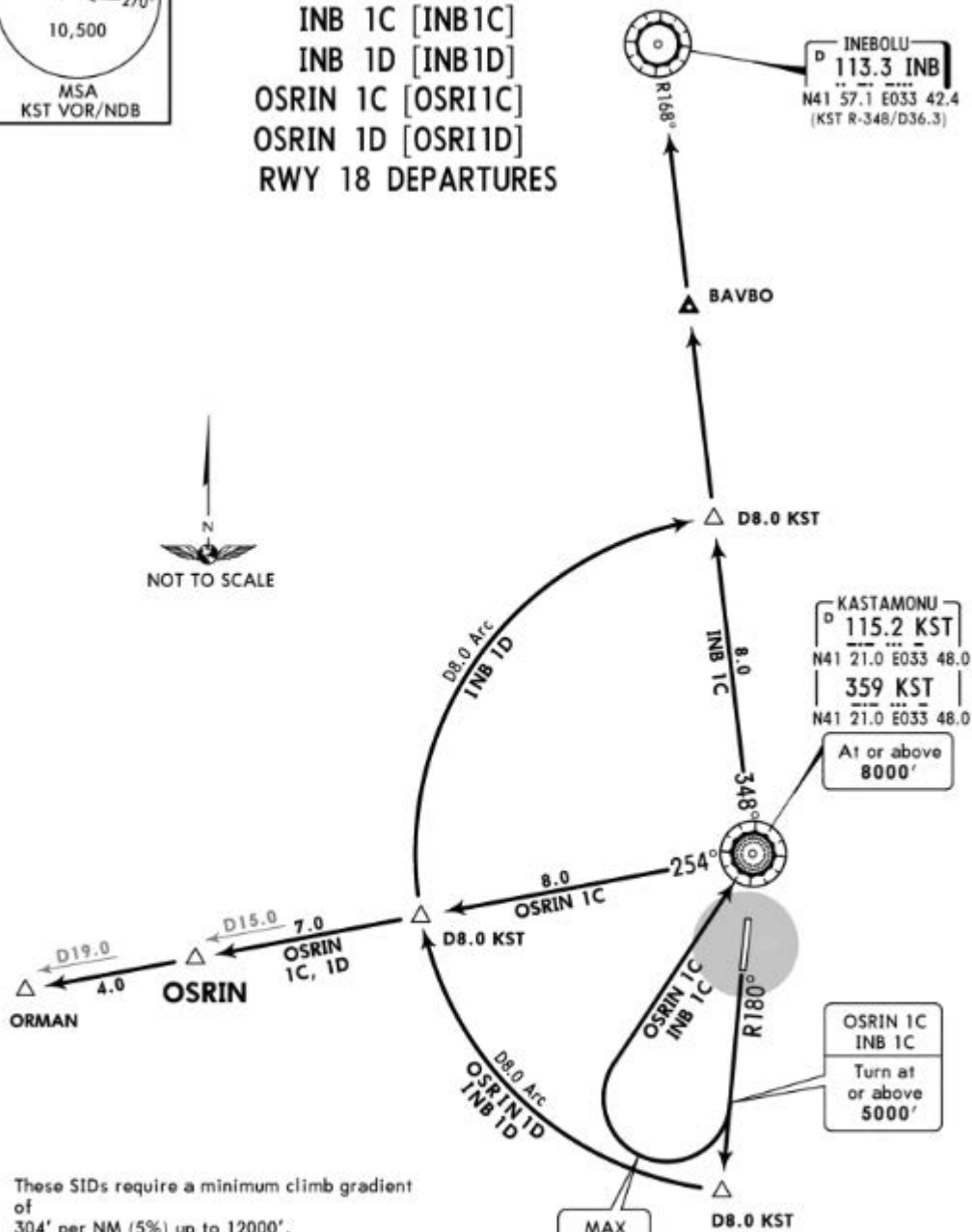
SID	ROUTING
INB 1A	Climb on KST R-348 (348° bearing) to INB, then join airway.
OSRIN 1A	Climb on KST R-358 (358° bearing) to 5500', turn RIGHT to KST, KST R-254 (254° bearing) to OSRIN, then to ORMAN.
OSRIN 1B	Climb on KST R-358 (358° bearing) to D7.0 KST, turn LEFT, along D7.0 KST Arc, intercept KST R-254 (254° bearing) to OSRIN, then to ORMAN.



Apt Elev
3524'

Trans level: By ATC Trans alt: 12000'

INB 1C [INB1C]
INB 1D [INB1D]
OSRIN 1C [OSRI1C]
OSRIN 1D [OSRI1D]
RWY 18 DEPARTURES



These SIDs require a minimum climb gradient of 304' per NM (5%) up to 12000'.

Gnd speed-KT	75	100	150	200	250	300
304' per NM	380	507	760	1013	1267	1520

SID	ROUTING
INB 1C	Climb on KST R-180 (180° bearing) to 5000', turn RIGHT to KST, KST R-348 (348° bearing) to INB.
INB 1D	Climb on KST R-180 (180° bearing) to D8.0 KST, turn RIGHT, along D8.0 KST Arc, intercept KST R-348 (348° bearing) to INB.
OSRIN 1C	Climb on KST R-180 (180° bearing) to 5000', turn RIGHT to KST, KST R-254 (254° bearing) to OSRIN, then to ORMAN.
OSRIN 1D	Climb on KST R-180 (180° bearing) to D8.0 KST, turn RIGHT, along D8.0 KST Arc, intercept KST R-254 (254° bearing) to OSRIN, then to ORMAN.