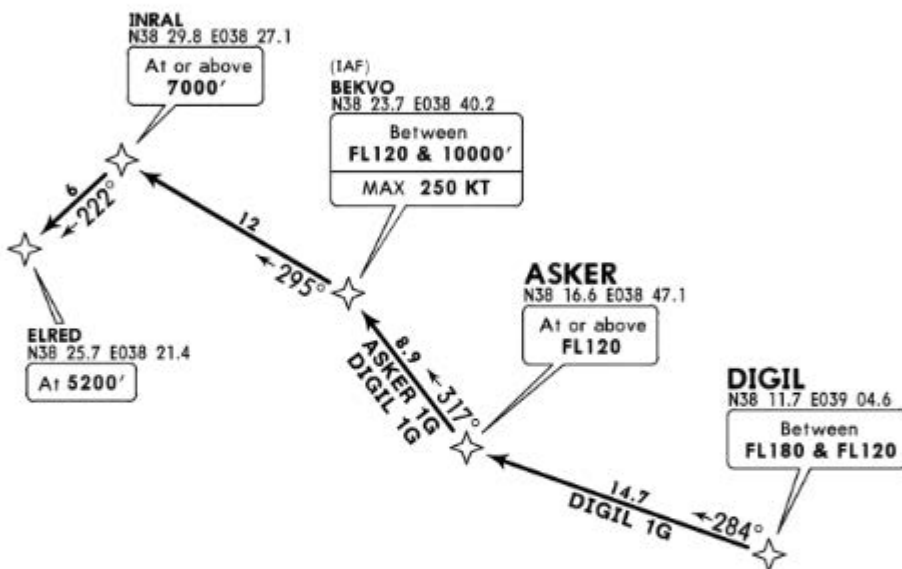
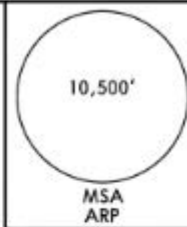


ERHAC
Approach
118.775

Apt Elev
3018'

Alt Set: hPa Trans level: By ATC Trans alt: 10000'
1. RNP 1.
2. RNAV (GNSS).
3. GPS and Erhac permission required.

ASKER 1G [ASKE1G]
DIGIL 1G [DIGI1G]
RWY 22 RNAV ARRIVALS



Direct distance from ELRED
to Tulga Apt: 7 NM

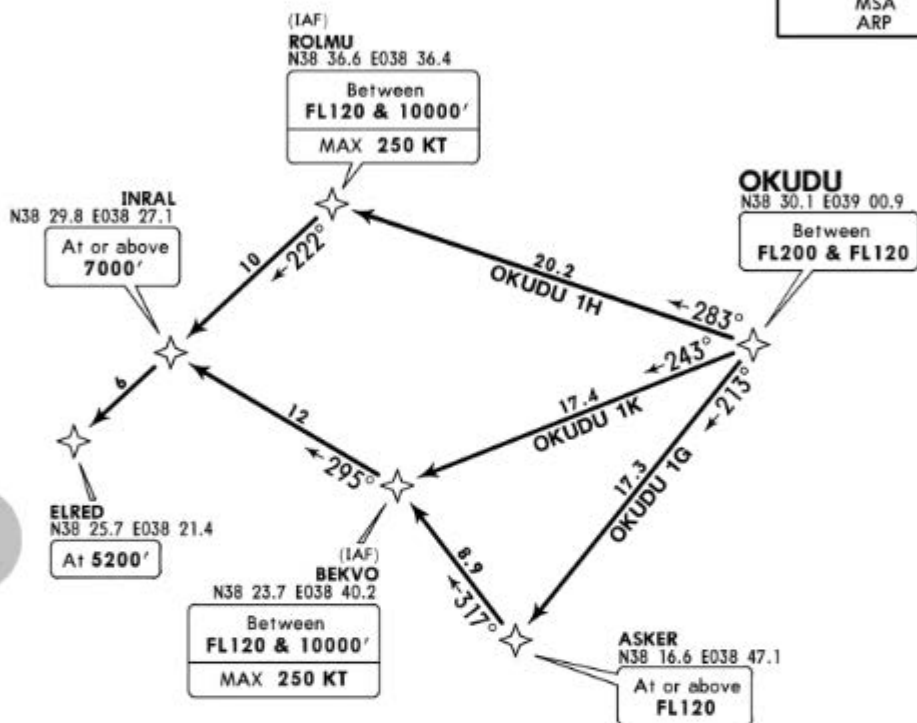
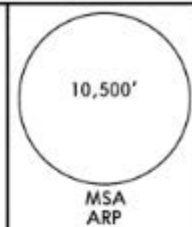
STAR	ROUTING
ASKER 1G	ASKER (FL120+) - BEKVO (FL120-; 10000'+; K250-) - INRAL (7000'+) - ELRED (5200').
DIGIL 1G	DIGIL (FL180-; FL120+) - ASKER (FL120+) - BEKVO (FL120-; 10000'+; K250-) - INRAL (7000'+) - ELRED (5200').

ERHAC
Approach
118.775

Apt Elev
3018'

Alt Set: hPa Trans level: By ATC Trans alt: 10000'
1. RNP 1.
2. RNAV (GNSS).
3. GPS and Erhac permission required.

OKUDU 1G [OKUD1G]
OKUDU 1H [OKUD1H]
OKUDU 1K [OKUD1K]
RWY 22 RNAV ARRIVALS



Direct distance from ELRED
to Tulga Apt: 7 NM

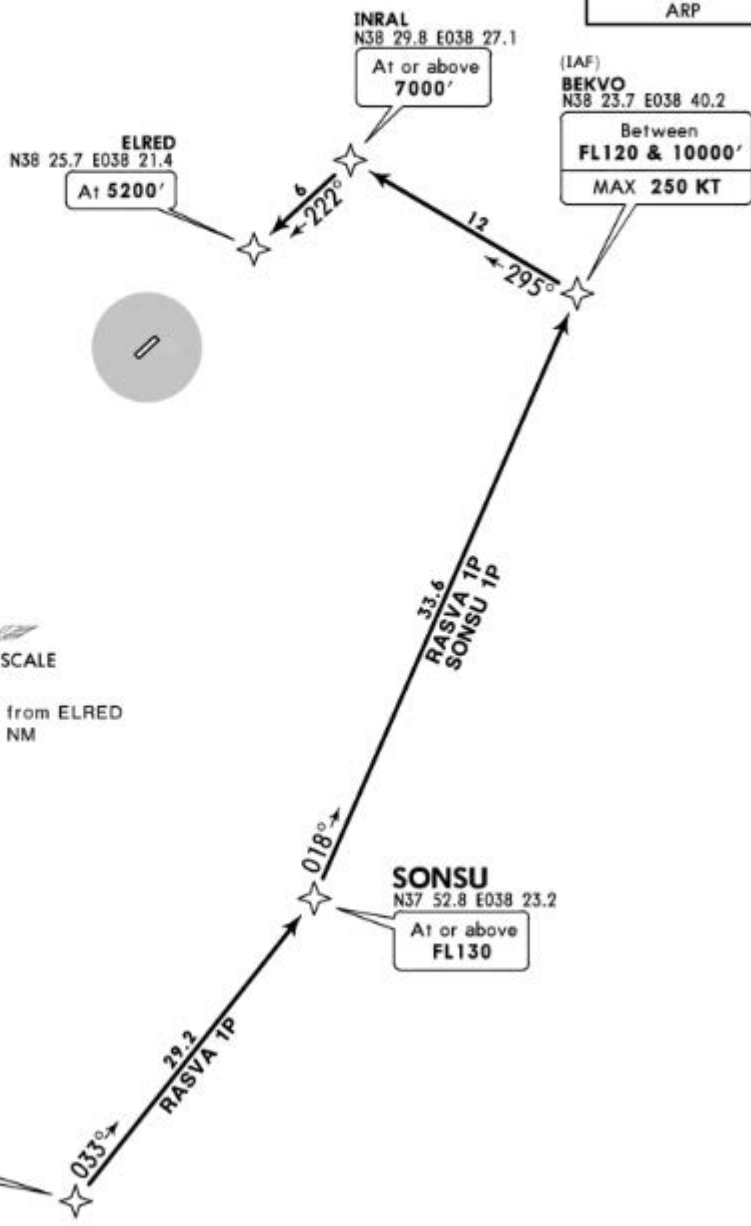
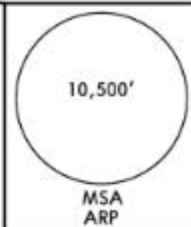
STAR	ROUTING
OKUDU 1G	OKUDU (FL200-; FL120+) - ASKER (FL120+) - BEKVO (FL120-; 10000'+; K250-) - INRAL (7000'+) - ELRED (5200').
OKUDU 1H	OKUDU (FL200-; FL120+) - ROLMU (FL120-; 10000'+; K250-) - INRAL (7000'+) - ELRED (5200').
OKUDU 1K	OKUDU (FL200-; FL120+) - BEKVO (FL120-; 10000'+; K250-) - INRAL (7000'+) - ELRED (5200'+).

ERHAC
Approach
118.775

Apt Elev
3018'

Alt Set: hPa Trans level: By ATC Trans alt: 10000'
1. RNP 1.
2. RNAV (GNSS).
3. GPS and Erhac permission required.

**RASVA 1P [RASVIP]
SONSU 1P [RONSI1P]
RWY 22 RNAV ARRIVALS**



Direct distance from ELRED to Tulga Apt: 7 NM

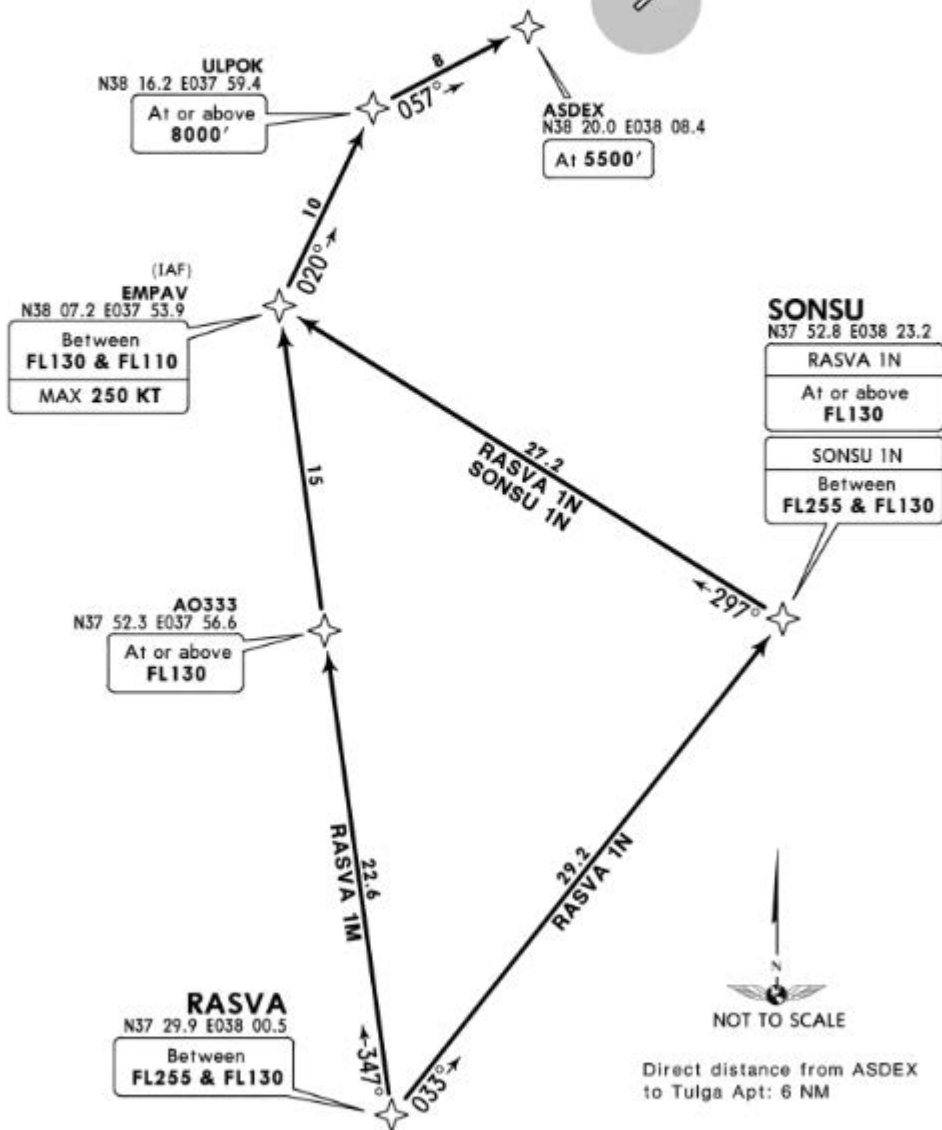
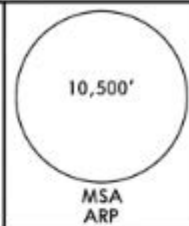
STAR	ROUTING
RASVA 1P	RASVA (FL255-; FL130+) - SONSU (FL130+) - BEKVO (FL120-; 10000'+; K250-) - INRAL (7000'+) - ELRED (5200').
SONSU 1P	SONSU (FL130+) - BEKVO (FL120-; 10000'+; K250-) - INRAL (7000'+) - ELRED (5200').

ERHAC
Approach
118.775

Apt Elev
3018'

Alt Set: hPa Trans level: By ATC Trans alt: 10000'
 1. RNP 1.
 2. RNAV (GNSS).
 3. GPS and Erhac permission required.

RASVA 1M [RASV1M]
RASVA 1N [RASV1N]
SONSU 1N [SONS1N]
RNAV ARRIVALS
RNAV A



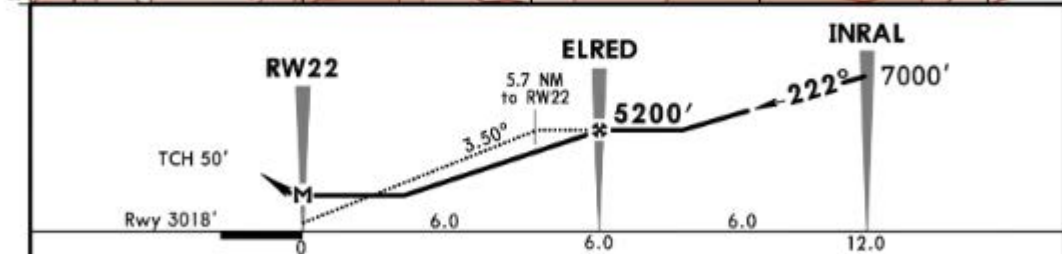
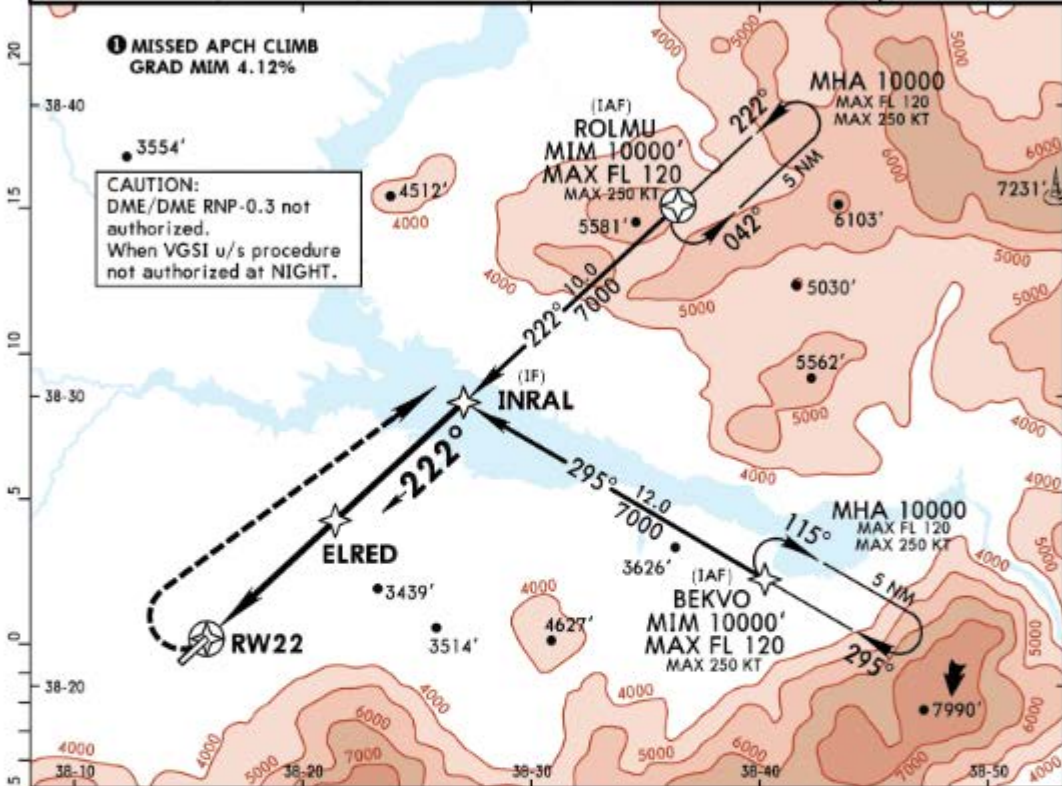
STAR	ROUTING
RASVA 1M	RASVA (FL255-; FL130+) - AO333 (FL130+) - EMPAV (FL130-; FL110+; K250-) - ULPOK (8000'+) - ASDEX (5500').
RASVA 1N	RASVA (FL255-; FL130+) - SONSU (FL130+) - EMPAV (FL130-; FL110+; K250-) - ULPOK (8000'+) - ASDEX (5500').
SONSU 1N	SONSU (FL255-; FL130+) - EMPAV (FL130-; FL110+; K250-) - ULPOK (8000'+) - ASDEX (5500').

LTAO
TULGA

JEPPESEN
22 JUN 18 **22-1**

MALATYA, TURKEY
ORNAV (GNSS) RWY 22

ERHAC Approach				*TULGA Tower		
118.775				125.6	126.0	132.0
RNAV	Final Aph Crs 222°	Minimum Alt ELRED 5200' (2182')	LNAV MDA(H) 3680' (662')	Apt Elev 3018'		10,500
				Rwy 3018'		
MISSED APCH: Turn RIGHT to ROLMU, climbing to 10000' or above and contact ATC. Caution: Mim bank angle 025°.						
Alt Set: hPa		Rwy Elev: 106 hPa	Trans level: By ATC		Trans alt: 10000'	
1. GPS and ERHAC permission required.				2. Emergency safe alt 100 NM 12400'.		
						MSA RW22



Gnd speed-Kts	70	90	100	120	140	160	10000'	ROLMU RT
Descent Angle 3.50°	434	557	619	743	867	991		
MAP at RW22								

Military	STRAIGHT-IN LANDING RWY 22		CIRCLE-TO-LAND	
	LNAV		Not authorized Southeast of runway	
	Missed apch climb gradient mim 4.12%			
	MDA(H) 3680' (662')			
A		1600m	Max Kts 100	3840' (822') 2000m
B		2800m	135	4060' (1042') 4800m
C		3200m	180	4200' (1182') 4800m
D			205	

LTAA
TULGA

22 JUN 18

JEPPESEN

22-2

MALATYA, TURKEY
MISSED APCH CLIMB
GRAD MIM 4.6%
RNAV (GNSS) A

ERHAC Approach
118.775

*TULGA Tower
125.6 126.0 132.0

RNAV

Final
Apc Crs
070°

Minimum Alt
ASDEX
5500' (2482')

MDA(H)
Refer to
Minimums

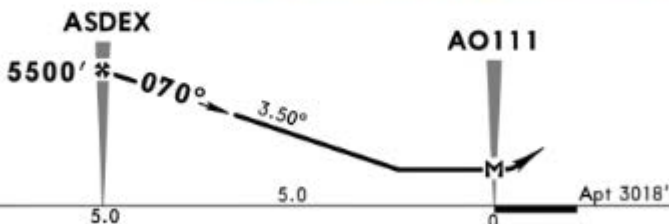
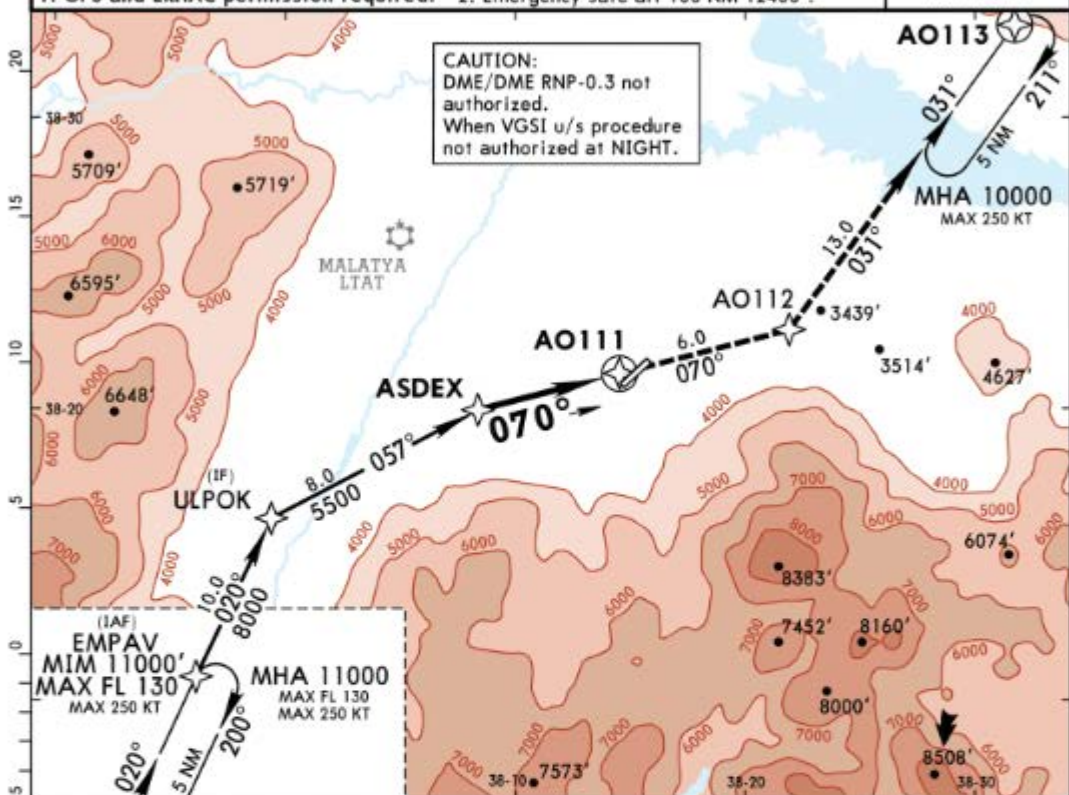
Apt Elev 3018'

10,500

MISSED APCH: Climb direct to AO112 to 5500' or above, then turn LEFT onto track 031° to AO113, climb in holding to 10000' or above and contact ATC.

Alt Set: hPa Apt Elev: 106 hPa Trans level: By ATC Trans alt: 10000'
1. GPS and ERHAC permission required. 2. Emergency safe alt 100 NM 12400'.

MSA AO111



Gnd speed-Kts	70	90	100	120	140	160
Descent Angle 3.50°	434	557	619	743	867	991

MAP at AO111

Military

CIRCLE-TO-LAND **I**

Missed Apch climb grad mim 4.6%
Not authorized Southeast of runway

	Max Kts	MDA(H)	VIS
A	100	3840' (822')	2000m
B	135	4060' (1042')	4800m
C	180	4200' (1182')	4800m
D	205	4200' (1182')	4800m

I MIM bank angle 25°.

PANS OPS

LTAO

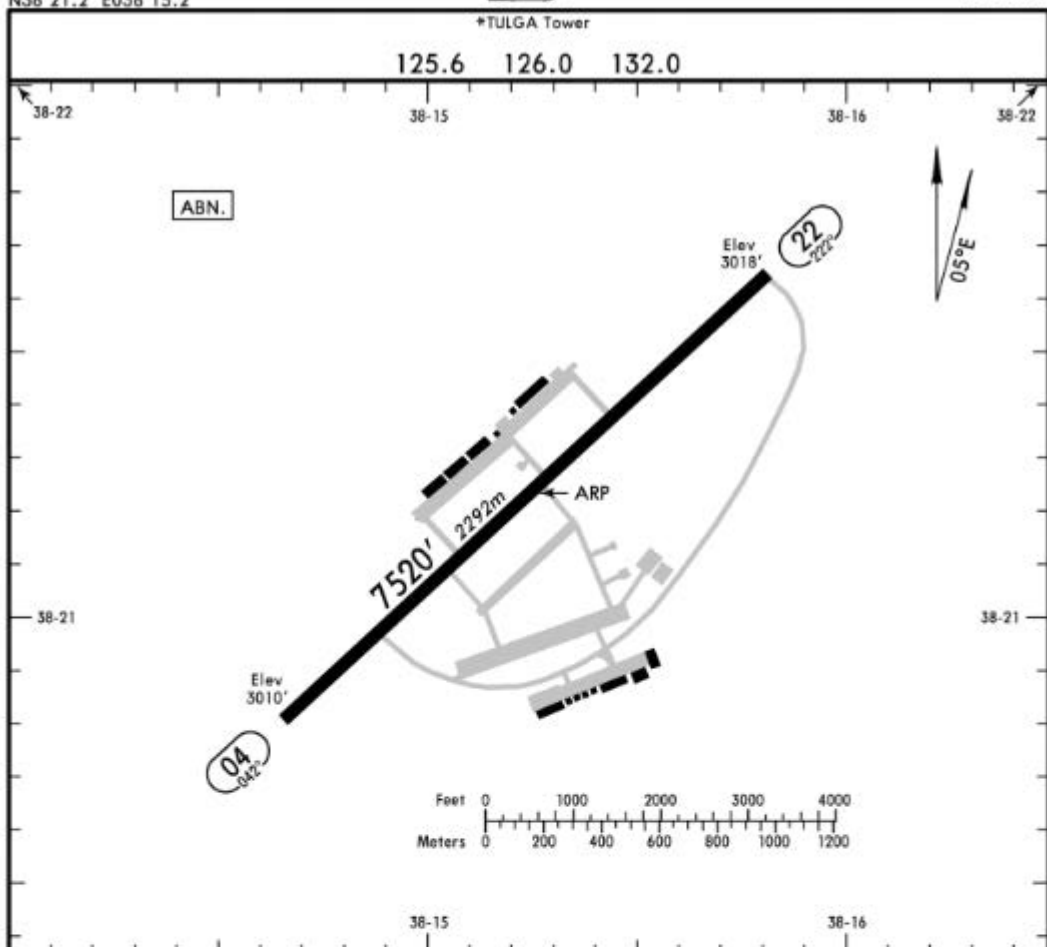
Apt Elev 3018'
N38 21.2 E038 15.2

JEPPESEN

22 JUN 18 **20-9**

MALATYA, TURKEY

TULGA



ADDITIONAL RUNWAY INFORMATION

RWY	USABLE LENGTHS LANDING BEYOND	TAKE-OFF	WIDTH
04 22 HIRL (60m)			151' 46m

Standard

TAKE-OFF

	Low Visibility Take-off	Day: RL or RCLM Night: RL	Adequate vis ref (Day only)
A			
B			
C	RVR 300m	400m	500m
D			

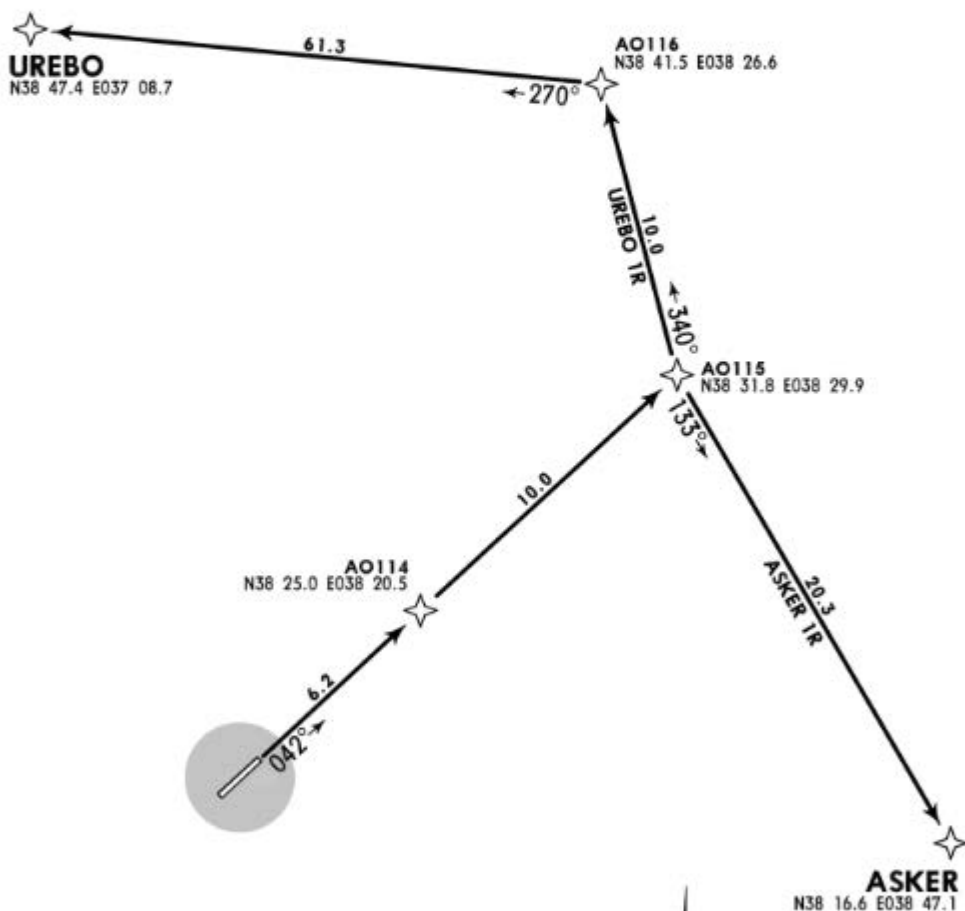
ERHAC
Approach
118.775

Apt Elev
3018'

- Trans level: By ATC Trans alt: 10000'
- (CIO): Close-in obstacles:
3169' from DER, 1349' RIGHT of CL, 3110'.
3233' from DER, 1366' RIGHT of CL, 3112'.
3081' from DER, 1157' RIGHT of CL, 3100'.
3257' from DER, 1319' RIGHT of CL, 3110'.
 - RNP 1.
 - RNAV (GNSS).
 - GPS and Erhac permission required.

**ASKER 1R [ASKE1R]
UREBO 1R [UREB1R]
RWY 04 RNAV DEPARTURES**

SPEED: MAX 310 KT



These SIDs require a minimum climb gradient of 6.42% up to FL130.

Gnd speed-KT	75	100	150	200	250	300
6.42% V/V (fpm)	488	650	975	1300	1625	1950



SID	ROUTING
ASKER 1R	Climb direct to AO114, 042° track to AO115, turn RIGHT, 133° track to ASKER, climb as instructed.
UREBO 1R	Climb direct to AO114, 042° track to AO115, turn LEFT, 340° track to AAO116, turn LEFT, 270° track to UREBO, climb as instructed.

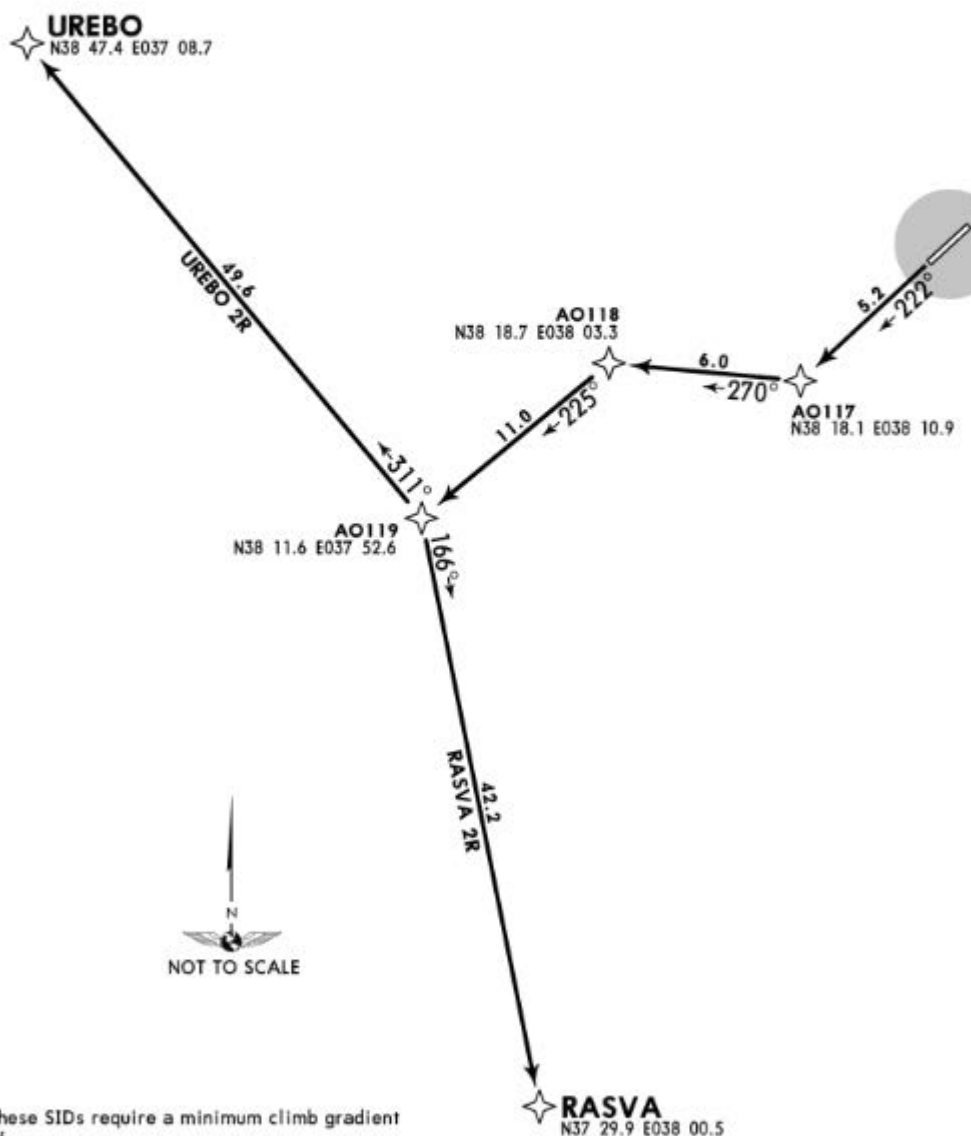
ERHAC
Approach
118.775

Apt Elev
3018'

Trans level: By ATC Trans alt: 10000'
1. RNP 1.
2. RNAV (GNSS).
3. GPS and Erhac permission required.

**RASVA 2R [RASV2R]
UREBO 2R [UREB2R]
RWY 22 RNAV DEPARTURES**

SPEED: MAX 310 KT



These SIDs require a minimum climb gradient of 6.42% up to FL120.

Gnd speed-KT	75	100	150	200	250	300
6.42% V/V (fpm)	488	650	975	1300	1625	1950

SID	ROUTING
RASVA 2R	Climb direct to AO117, turn RIGHT, 270° track to AO118, turn LEFT, 225° track to AO119, turn LEFT, 166° track to RASVA, climb as instructed.
UREBO 2R	Climb direct to AO117, turn RIGHT, 270° track to AO118, turn LEFT, 225° track to AO119, turn RIGHT, 311° track to UREBO, climb as instructed.