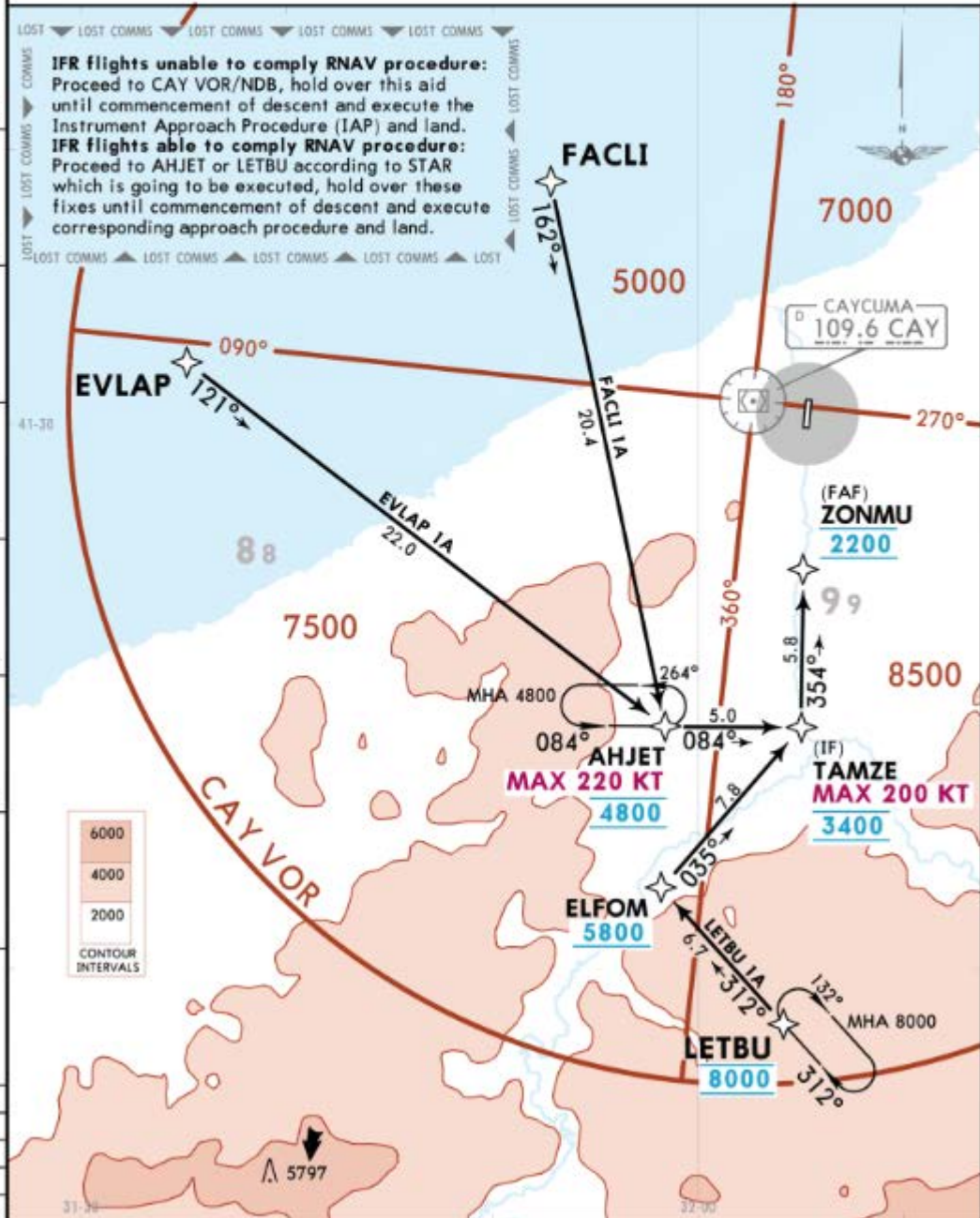


*ATIS <b>119.275</b>	Apt Elev <b>41</b>	Alt Set: hPa Trans level: By ATC 1. RNP1 required otherwise advise ATC. 2. Descend as cleared. 3. For final approach to Rwy 36 see ILS Y Rwy 36 approach.
-------------------------	-----------------------	--

**EV LAP 1A [EVLA1A], FACLI 1A [FACL1A]  
LETBU 1A [LETB1A]  
RNAV (GNSS) ARRIVALS  
(RWY 36)**



STAR	ROUTING
<b>EV LAP 1A</b>	EV LAP - AHJET (K220-; 4800) - TAMZE (K200-; 3400) - ZONMU (2200).
<b>FACLI 1A</b>	FACLI - AHJET (K220-, 4800) - TAMZE (K200-; 3400) - ZONMU (2200).
<b>LETBU 1A</b>	LETBU (8000) - ELFOM (5800+) - TAMZE (K200-; 3400) - ZONMU (2200).

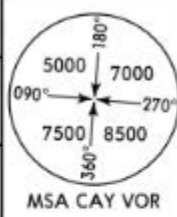
LTAS/ONQ  
CAYCUMA

JEPPESEN  
14 JUN 19 **11-1** Eff 20 Jun

ZONGULDAK, TURKEY  
ILS Z Rwy 36

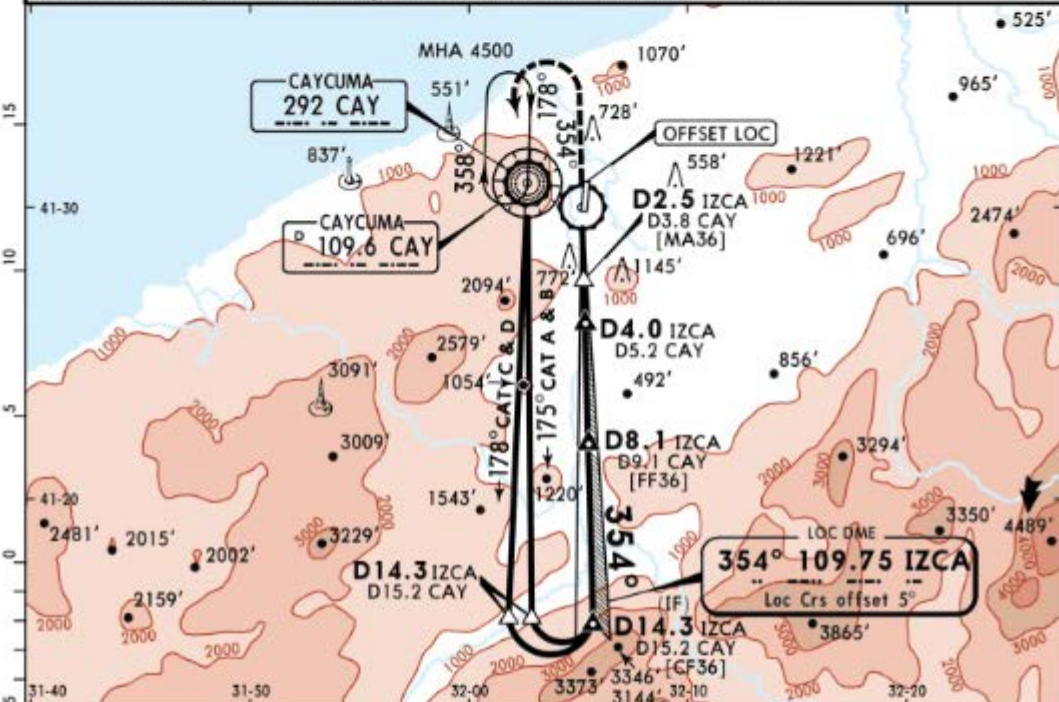
*ATIS 119.275			*CAYCUMA Tower (TWR/APP) 119.550 123.7		
LOC IZCA <b>109.75</b>	Final Apch Crs <b>354°</b>	GS <b>D4.0 IZCA</b> 3300' (3259')	ILS DA(H) Refer to Minimums	Apt Elev 41'	Rwy Elev 41'

**MISSED APCH:** Climb to 2200' on LOC course 354°, then turn LEFT climbing 4500', proceed CAY VOR/NDB and hold.  
Refer to minimums for missed apch climb gradients.

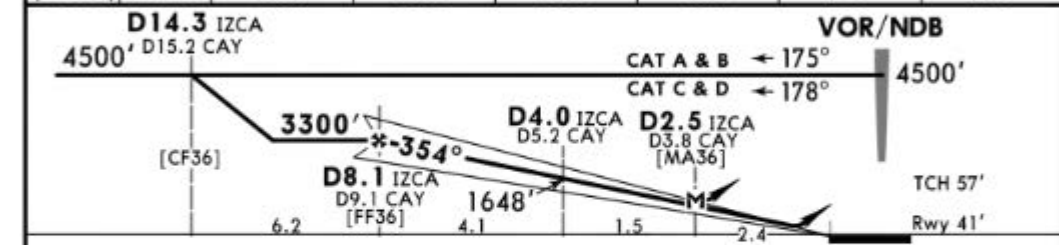


Alt Set: hPa      Apt Elev: 2 hPa      Trans level: By ATC      Trans alt: 10000'

1. NDB or VOR required. 2. DME required. 3. Baseturn restricted to MAX 185 KT.



LOC (GS out)	IZCA DME	8.0	7.0	6.0	5.0	4.0	3.0
	ALTITUDE	3260'	2860'	2460'	2060'	1660'	1260'



Gnd speed-Kts	70	90	100	120	140	160	HIALS PAPI	2200'	on 354°	4500'
ILS GS or LOC Descent Angle	3.80°	471	605	673	807	1076				

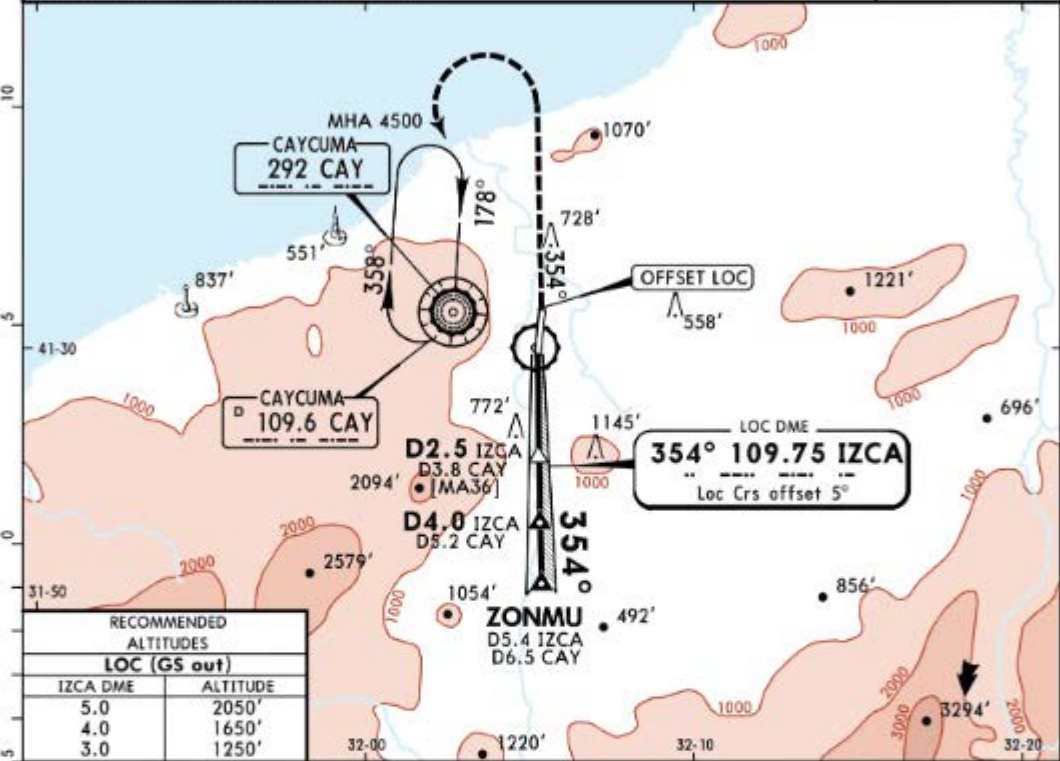
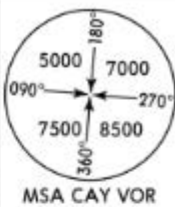
MAP at D2.5 IZCA/D3.8 CAY

PANS OPS	Standard				STRAIGHT-IN LANDING RWY 36				CIRCLE-TO-LAND			
	MACG mim 3.5%		ILS MACG mim 2.5%		LOC (GS out) CDFA		LOC (GS out) CDFA		Max Kts	MDA(H)	VIS	
DA(H) 420' (379')		DA(H) 540' (499')		DA/MDA(H) 1040' (999')		DA/MDA(H) 1040' (999')		100				
FULL		ALS out		FULL		ALS out			135	2100' (2059')	1600m	1
RVR 1500m		RVR 1500m		RVR 4500m		RVR 4500m		180				
RVR 1700m		RVR 2300m							205	2600' (2559')	3600m	1

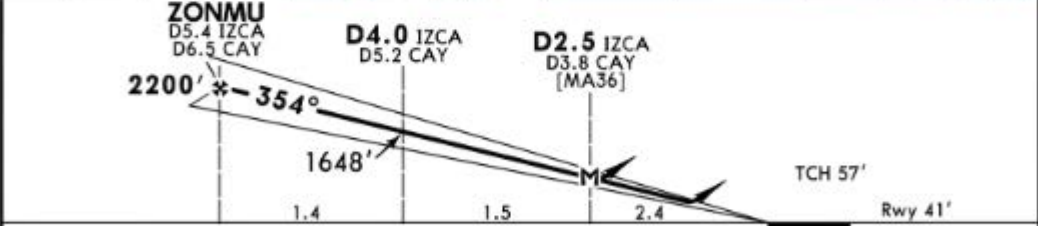
1 or higher straight-in minimums.



*ATIS 119.275			*CAYCUMA Tower (TWR/APP) 119.550 123.7		
LOC IZCA <b>109.75</b>	Final Apch Crs <b>354°</b>	GS ZONMU <b>2200'</b> (2159')	ILS DA(H) Refer to Minimums	Apt Elev Rwy 41'	41'
<b>MISSED APCH: Climb to 2200' on track 354°, then turn LEFT climbing 4500' proceed CAY VOR/NDB and hold.</b> Refer to minimums for missed apch climb gradients.					
Alt Set: hPa		Rwy Elev: 2 hPa	Trans level: By ATC		Trans alt: 10000'
1. NDB or VOR required. 2. DME required.					



RECOMMENDED ALTITUDES	
LOC (GS out)	
IZCA DME	ALTITUDE
5.0	2050'
4.0	1650'
3.0	1250'



Gnd speed-Kts	70	90	100	120	140	160	HIALS PAPI 2200' on 354° 4500' LT
ILS GS or LOC Descent Angle	3.80°	471	605	673	807	942	
MAP at D2.5 IZCA/D3.8 CAY							

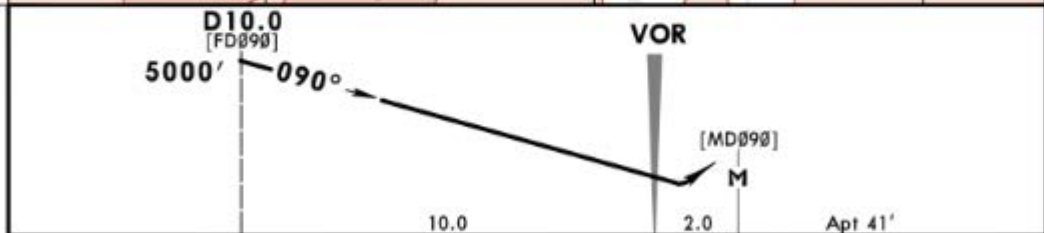
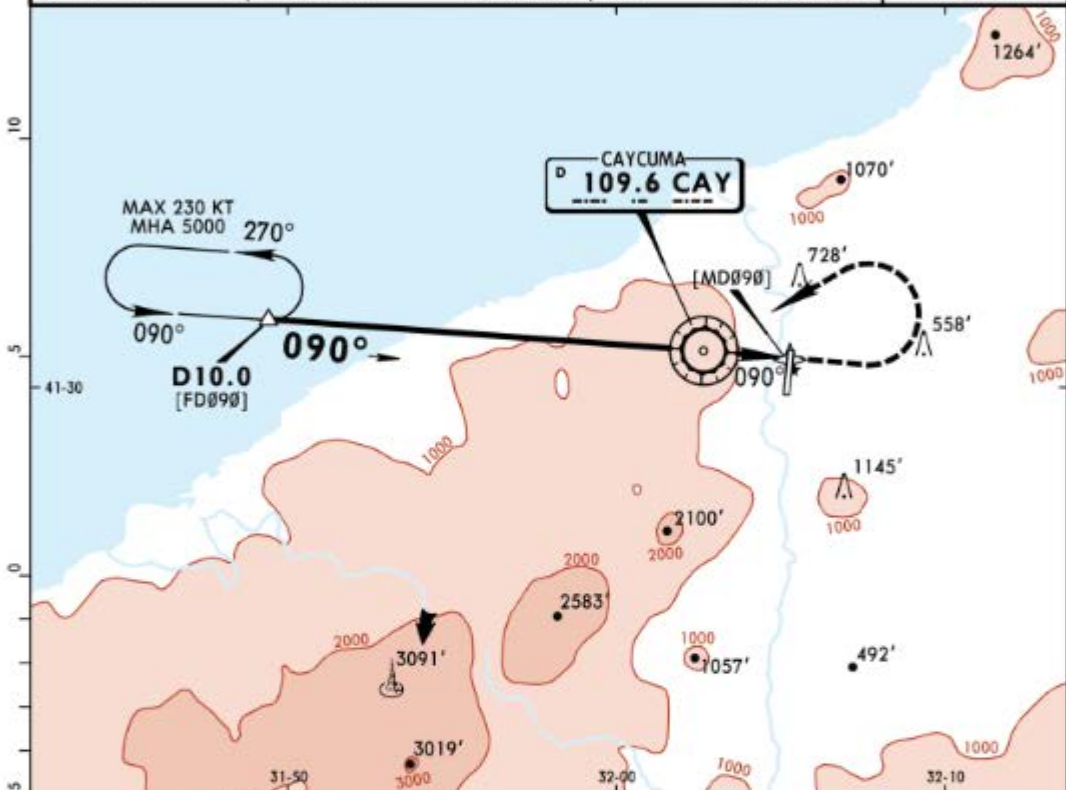
PANS OPS	STRAIGHT-IN LANDING RWY 36				LOC (GS out)		CIRCLE-TO-LAND		
	MACG mim 3.5%		MACG mim 2.5%		CDFA		Max Kts	MDA(H)	VIS
A	DA(H) <b>420'</b> (379')		DA(H) <b>540'</b> (499')		DA/MDA(H) <b>1040'</b> (999')				
B	FULL		FULL		ALS out		135	2100' (2059')	1600m
C	RVR 1500m		RVR 1500m		RVR 4500m		180	2600' (2559')	2400m
D	RVR 1700m		RVR 2300m				205	2600' (2559')	3600m

LTAS/ONQ  
CAYCUMA

JEPPESEN  
22 JUN 18 (13-1)

ZONGULDAK, TURKEY  
VOR DME 1

*ATIS 119.275				*CAYCUMA Tower (TWR/APP) 119.550 123.7			
VOR CAY 109.6	Final Apch Crs 090°	Minimum Alt D10.0 5000' (4959')	MDA(H) Refer to Minimums	Apt Elev	41'		
MISSED APCH: Turn LEFT climbing to 5000', proceed to D10.0 on R-270 and hold.							
Alt Set: hPa	Apt Elev: 2 hPa	Trans level: By ATC	Trans alt: 10000'		MSA CAY VOR		



Lighting - Refer to Airport Chart	5000'	CAY
LT		D10.0 on 109.6
		R-270

MAP at MD090  
Standard CIRCLE-TO-LAND

	Max Kts	MDA(H)	VIS
A	100	2100' (2059')	1500m
B	135	2100' (2059')	1600m
C	180	2600' (2559')	2400m
D	205	2600' (2559')	3600m

PANS OPS

CHANGES: MAP position. VNAV identifiers.

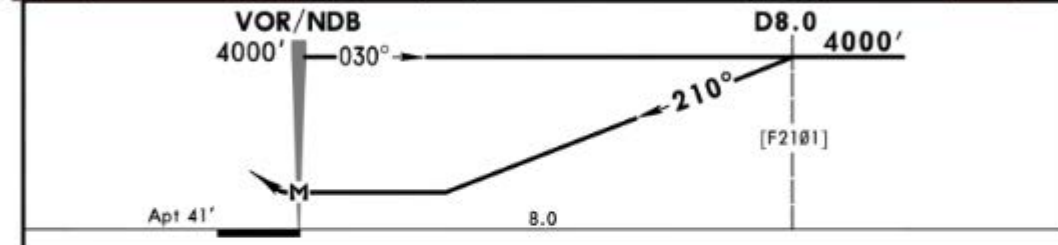
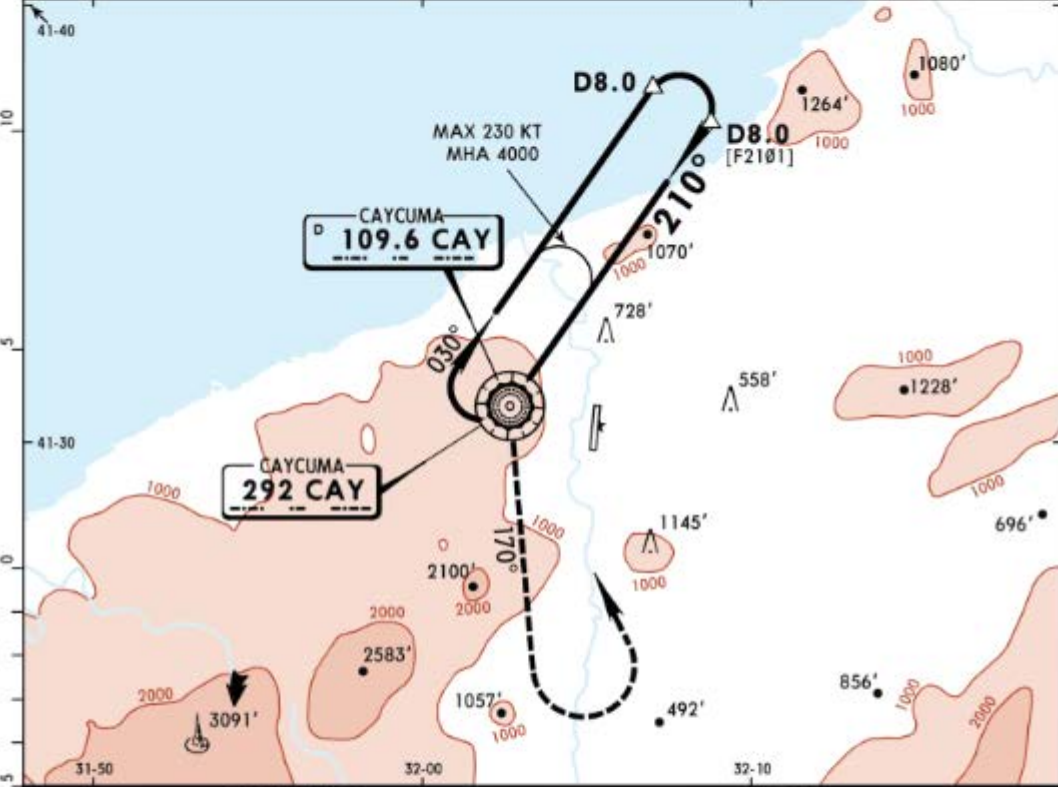
© JEPPESEN, 2007, 2018. ALL RIGHTS RESERVED.

LTAS/ONQ  
CAYCUMA

JEPPESEN  
22 JUN 18 (13-2)

ZONGULDAK, TURKEY  
VOR DME 2 or NDB DME

*ATIS 119.275				*CAYCUMA Tower (TWR/APP) 119.550 123.7			
VOR CAY 109.6	NDB CAY 292	Final Apch Crs 210°	Minimum Alt D8.0 4000' (3959')	MDA(H) Refer to Minimums	Apt Elev	41'	
<p>MISSED APCH: Climb on R-170/170° from NDB to 3200', then turn LEFT climbing to 4000' proceed VOR/NDB and hold.</p> <p>Alt Set: hPa      Apt Elev: 2 hPa      Trans level: By ATC      Trans alt: 10000'</p> <p>Racetrack restricted to MAX 185 KT.</p>							

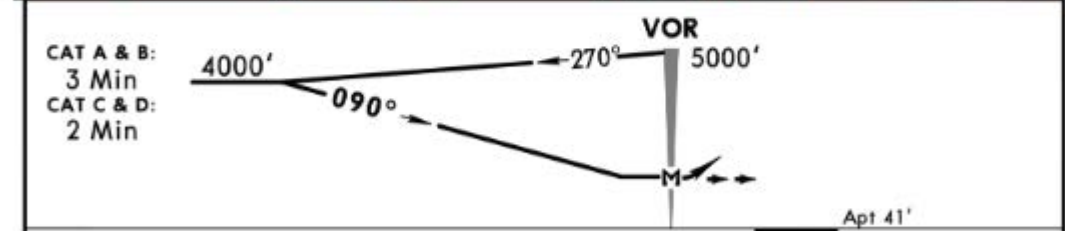
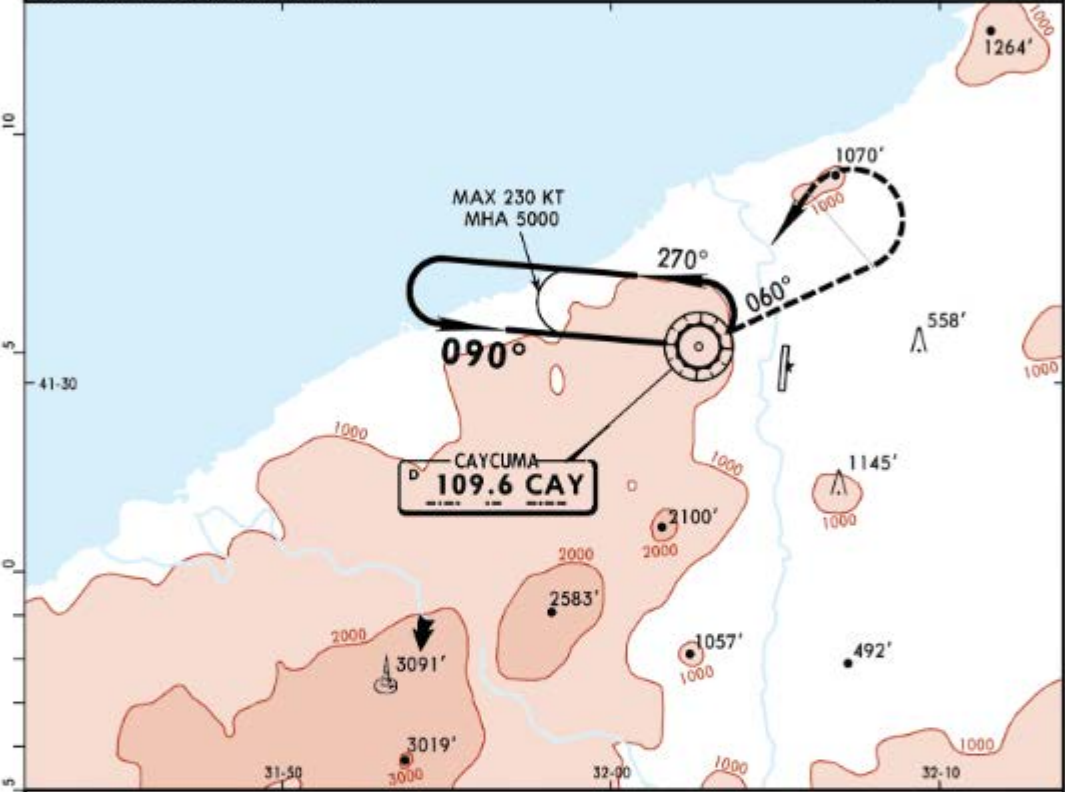


MAP at VOR/NDB	Lighting - Refer to Airport Chart	Refer to Missed Apch above
----------------	-----------------------------------	----------------------------

Standard				CIRCLE-TO-LAND	
	Max Kts	MDA(H)		VIS	
A	100	2100' (2059')		1500m	
B	135	2100' (2059')		1600m	
C	180	2600' (2559')		2400m	
D	205	2600' (2559')		3600m	



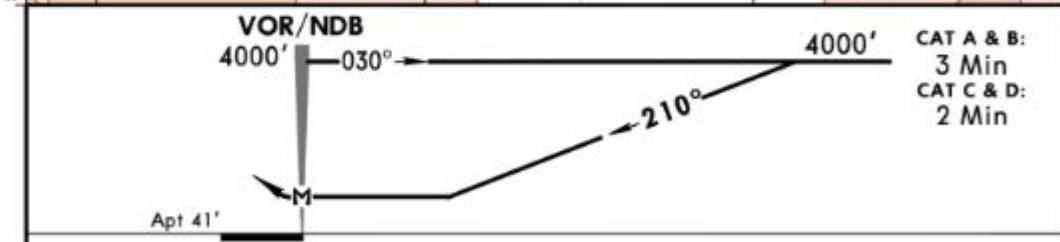
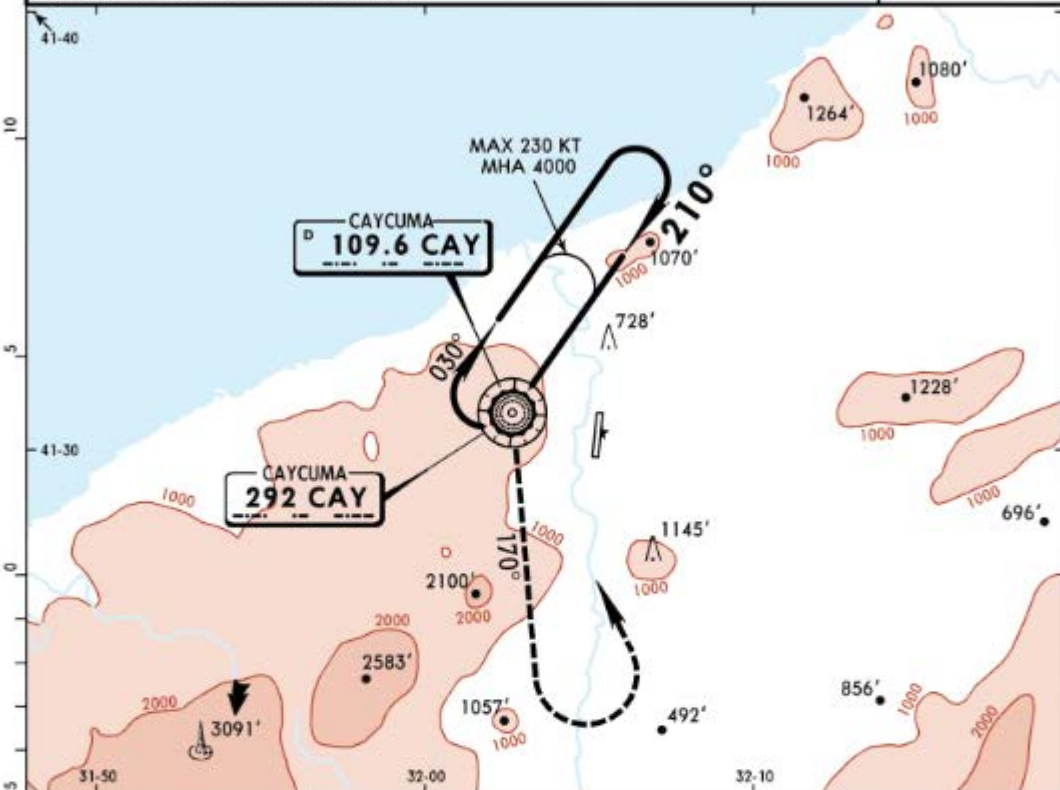
*ATIS 119.275		*CAYCUMA Tower (TWR/APP) 119.550 123.7				
VOR CAY 109.6	Final Apch Crs 090°	Minimum Alt No FAF	MDA(H) Refer to Minimums	Apt Elev 41'		
<b>MISSED APCH: Climb on R-060 to 3500', then turn LEFT climbing to 5000' proceed VOR and hold.</b>						MSA CAY VOR
Alt Set: hPa		Apt Elev: 2 hPa		Trans level: By ATC		
Racetrack restricted to MAX 185 KT.						



CAT A & B: 3 Min				CAT C & D: 2 Min				Lighting - Refer to Airport Chart	3500' LT	CAY on 109.6 R-060
MAP at VOR Standard				CIRCLE-TO-LAND						

	Max Kts.	MDA(H)	VIS
A	100	2100' (2059')	1500m
B	135	2100' (2059')	1600m
C	180	2600' (2559')	2400m
D	205	2600' (2559')	3600m

*ATIS 119.275				*CAYCUMA Tower: (TWR/APP) 119.550 123.7			
VOR CAY <b>109.6</b>	NDB CAY <b>292</b>	Final Apch Crs <b>210°</b>	Minimum Alt No FAF	MDA(H) Refer to Minimums	Apt Elev 41'		
<b>MISSED APCH: Climb on R-170/170° from NDB to 3200', then turn LEFT climbing to 4000' proceed VOR/NDB and hold.</b>							
Alt Set: hPa		Apt Elev: 2 hPa		Trans level: By ATC		Trans alt: 10000'	
Racetrack is restricted to MAX 185 KT.							MSA CAY VOR/NDB



MAP at VOR/NDB						Lighting - Refer to Airport Chart	Refer to Missed Apch above
----------------	--	--	--	--	--	-----------------------------------	----------------------------

PANS OPS	Max Kts	MDA(H)		VIS
		Standard	CIRCLE-TO-LAND	
A	100	2100'	(2059')	1500m
B	135	2100'	(2059')	1600m
C	180	2600'	(2559')	2400m
D	205	2600'	(2559')	3600m

LTAS/ONQ

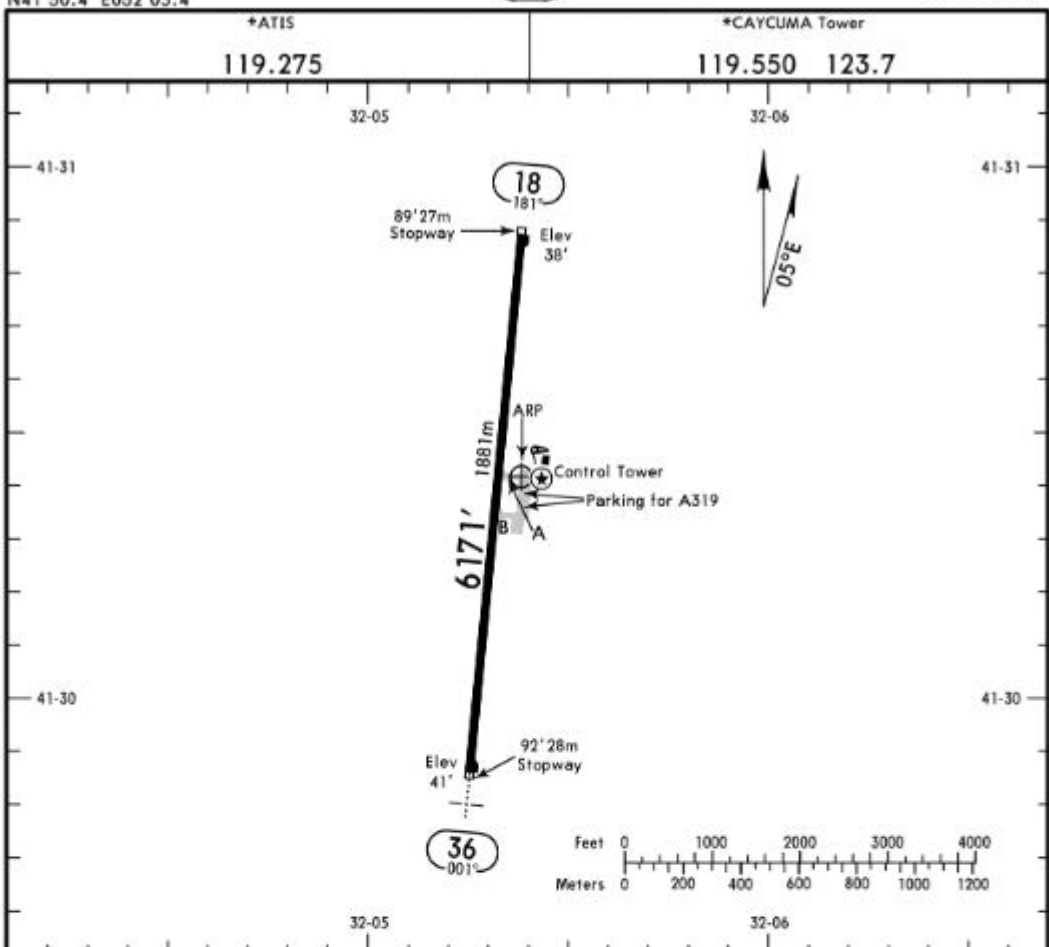
Apt Elev 41'  
N41 30.4 E032 05.4

JEPPESEN

10 MAY 19 (10-9) Eff 23 May

ZONGULDAK, TURKEY

CAYCUMA



ADDITIONAL RUNWAY INFORMATION

RWY		RVR	USABLE LENGTHS		TAKE-OFF	WIDTH
			LANDING BEYOND Threshold	Glide Slope		
18	HIRL (60m)	RVR				98'
36	HIRL (60m) HIALS PAPI-L (angle 3.80°)	RVR				30m

Standard

TAKE-OFF

	Low Visibility Take-off	Day: RL or RCLM Night: RL	Adequate vis ref (Day only)
A	Day: RL & RCLM Night: RL	Day: RL or RCLM Night: RL	Adequate vis ref (Day only)
B			
C	RVR 300m	400m	500m
D			

CHANGES: Twy B added. PAPI angle. Buildings. Stopways.

© JEPPESEN, 2007, 2019. ALL RIGHTS RESERVED.