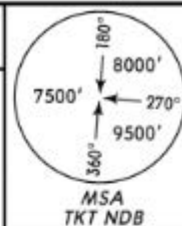
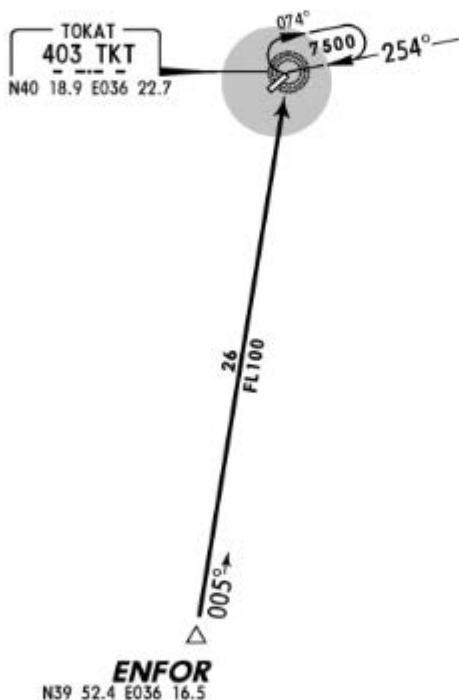


Apt Elev
1833'

Alt Set: hPa Trans level: By ATC Trans alt: 10000'

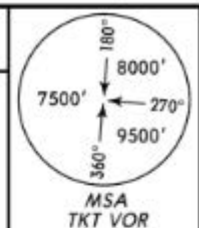


ENFOR 1A [ENFO1A] ARRIVAL

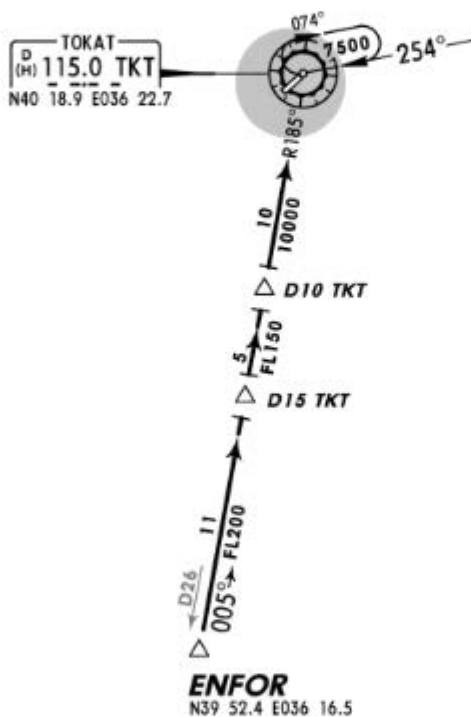


Apt Elev
1833'

Alt Set: hPa Trans level: By ATC Trans alt: 10000'



ENFOR 1B [ENFO1B] ARRIVAL



*TOKAT Tower (TWR/APP)

*Ground

118.7

121.7

VOR
TKT
115.0

Final
Apch Crs
074°

VOR DME
Minimum Alt
D4.0
5500' (3667')

VOR
Minimum Alt
No FAF

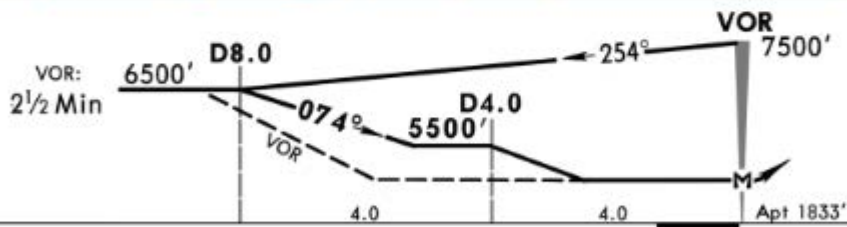
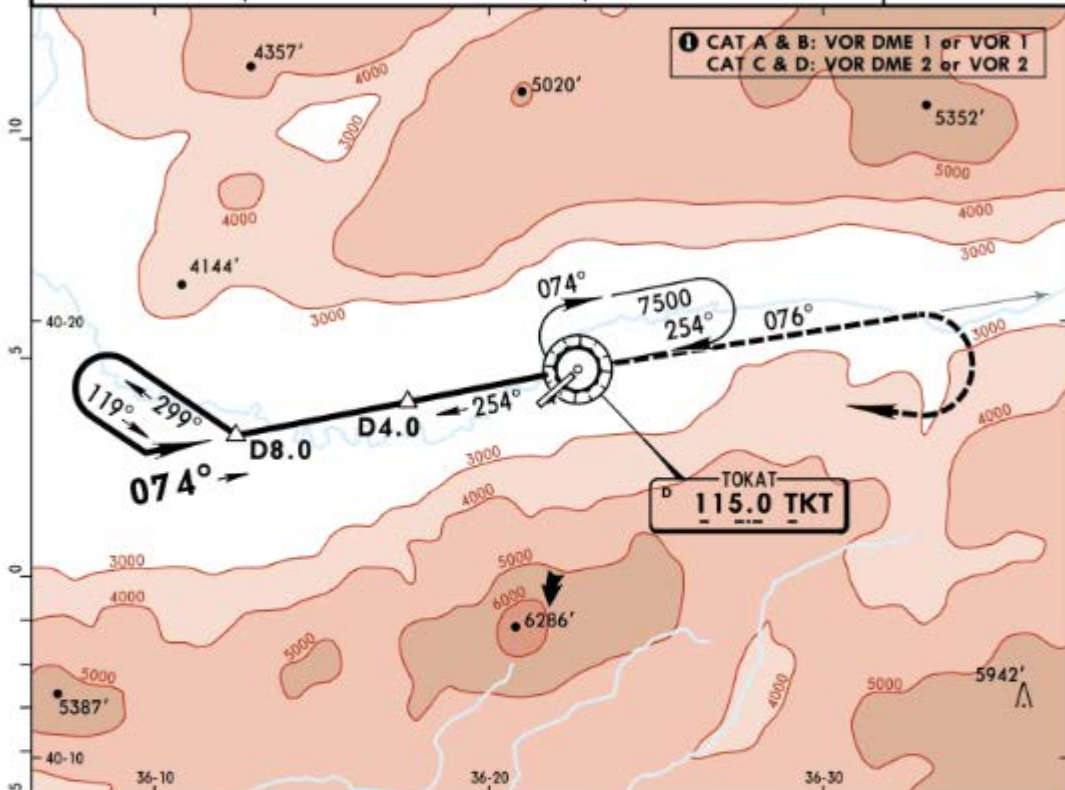
MDA(H)
Refer to
Minimums

Apt Elev 1833'



MISSED APCH: Climb on R-076° to CAT A & B: 5500', CAT C & D: 6500', then climbing turn RIGHT to VOR at 7500' and hold.

Alt Set: hPa Apt Elev: 65 hPa Trans level: By ATC Trans alt: 10000'



Lighting - Refer to Airport Chart	Refer to Missed Apch above
-----------------------------------	----------------------------

MAP at VOR
Standard

CIRCLE-TO-LAND

CAUTION: Not authorized Southeast of airport.

PANS OPS

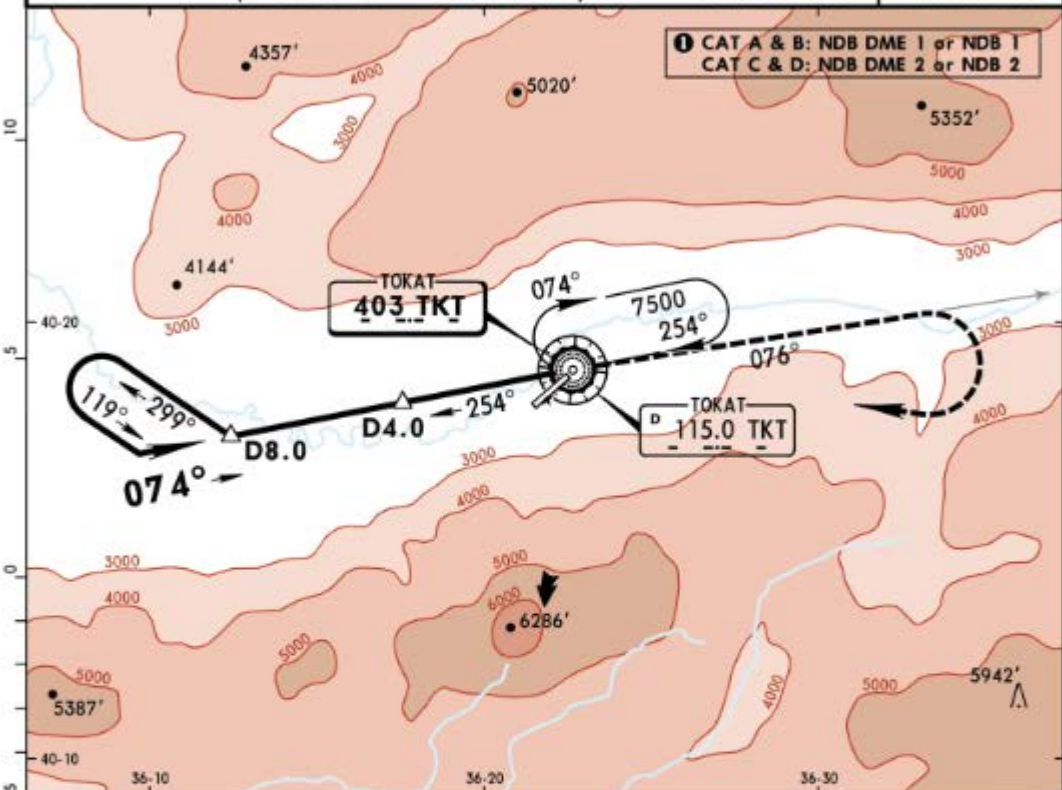
	Max Kts	MDA(H)	VIS
A	100	3600' (1767')	1500m
B	135	3600' (1767')	1600m
C	180	5200' (3367')	2400m
D	205	5400' (3567')	3600m

LTAW/TJK
TOKAT

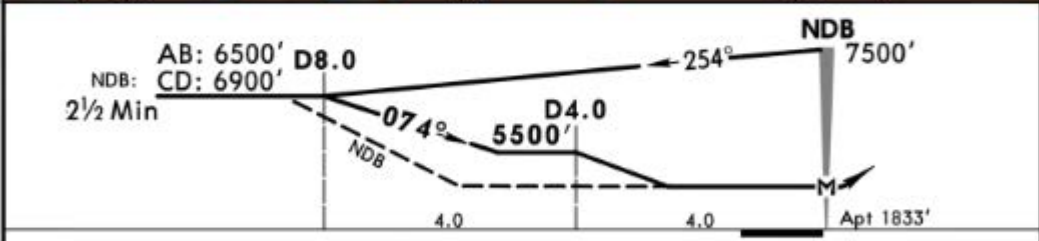
JEPPESEN
27 APR 18 (16-1)

TOKAT, TURKEY
NDB DME 1/2 or NDB 1/2

*TOKAT Tower (TWR/APP)					*Ground	
118.7					121.7	
NDB TKT 403	Final Apch Crs 074°	NDB DME Minimum Alt D4.0 (3667')	NDB Minimum Alt No FAF	MDA(H) Refer to Minimums	Apt Elev 1833'	
MISSED APCH: Climb on 076° from NDB to CAT A & B: 5500', CAT C & D: 6500', then climbing turn RIGHT to NDB at 7500' and hold.						
Alt Set: hPa		Apt Elev: 65 hPa		Trans level: By ATC		Trans alt: 10000'
						MSA TKT NDB



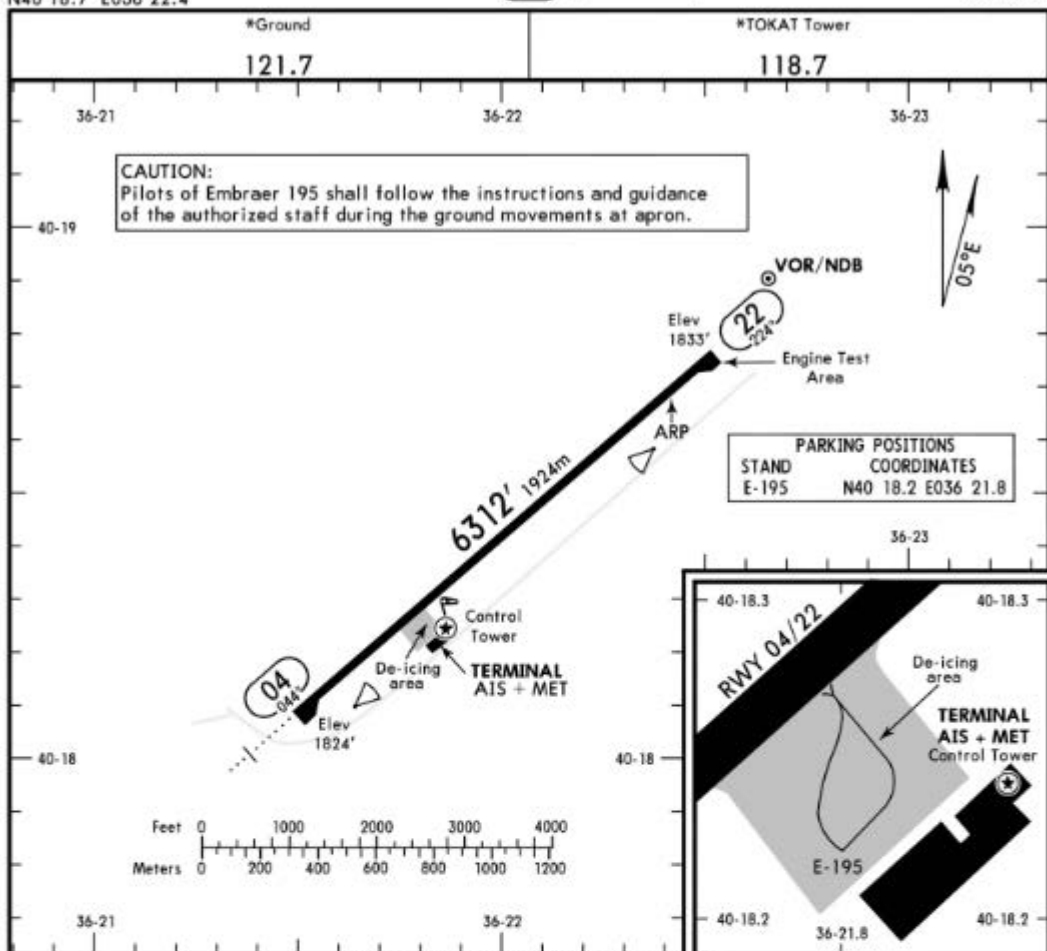
① CAT A & B: NDB DME 1 or NDB 1
CAT C & D: NDB DME 2 or NDB 2



MAP at NDB								Lighting - Refer to Airport Chart	Refer to Missed Apch above
------------	--	--	--	--	--	--	--	-----------------------------------	----------------------------

Standard CIRCLE-TO-LAND
CAUTION: Not authorized Southeast of airport.

PANS OPS	Max Kts	MDA(H)		VIS
A	100	3600'	(1767')	1500m
B	135	3600'	(1767')	1600m
C	180	5200'	(3367')	2400m
D	205	5400'	(3567')	3600m



ADDITIONAL RUNWAY INFORMATION

RWY	HIRL (60m) HIALS REIL PAPI-L (angle 3.0°) RVR	USABLE LENGTHS			WIDTH
		Threshold	Glide Slope	TAKE-OFF	
04	HIRL (60m) HIALS REIL PAPI-L (angle 3.0°) RVR				98'
22	HIRL (60m) REIL PAPI-L (angle 3.0°) RVR				30m

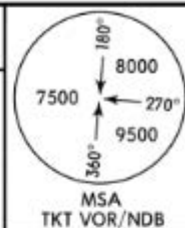
Standard

TAKE-OFF

	Low Visibility Take-off		
	Day: RL & RCLM Night: RL	Day: RL or RCLM Night: RL	Adequate vis ref (Day only)
A			
B			
C	RVR 300m	400m	500m
D			

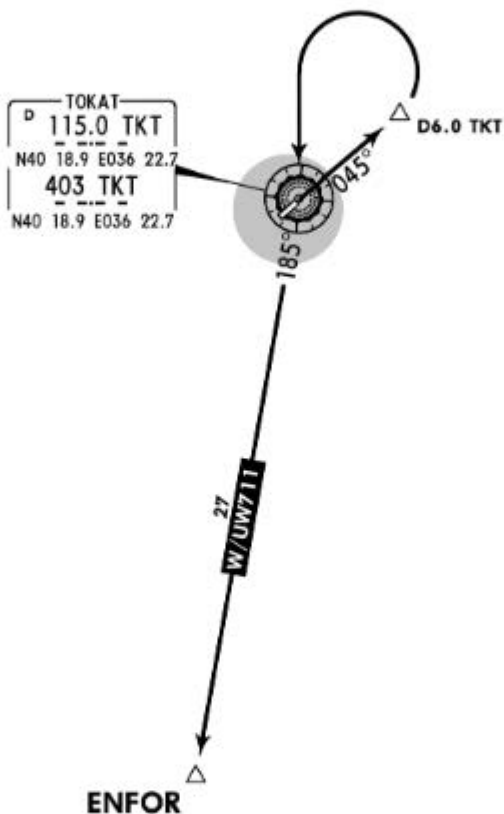
Apt Elev
1833'

Trans level: By ATC Trans alt: 10000'



ENFOR 1C [ENF01C]
RWY 04 DEPARTURE

SPEED: MAX 210 KT UNTIL JOINING AWY



This SID requires a minimum climb gradient of 517' per NM (8.5%) up to 6000'.

Gnd speed-KT	75	100	150	200	250	300
517' per NM	646	862	1293	1723	2154	2585



ROUTING

Climb on TKT R-045 to D6.0 TKT, turn LEFT to TKT, TKT R-185, then join airway W/UW711.