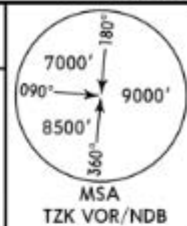


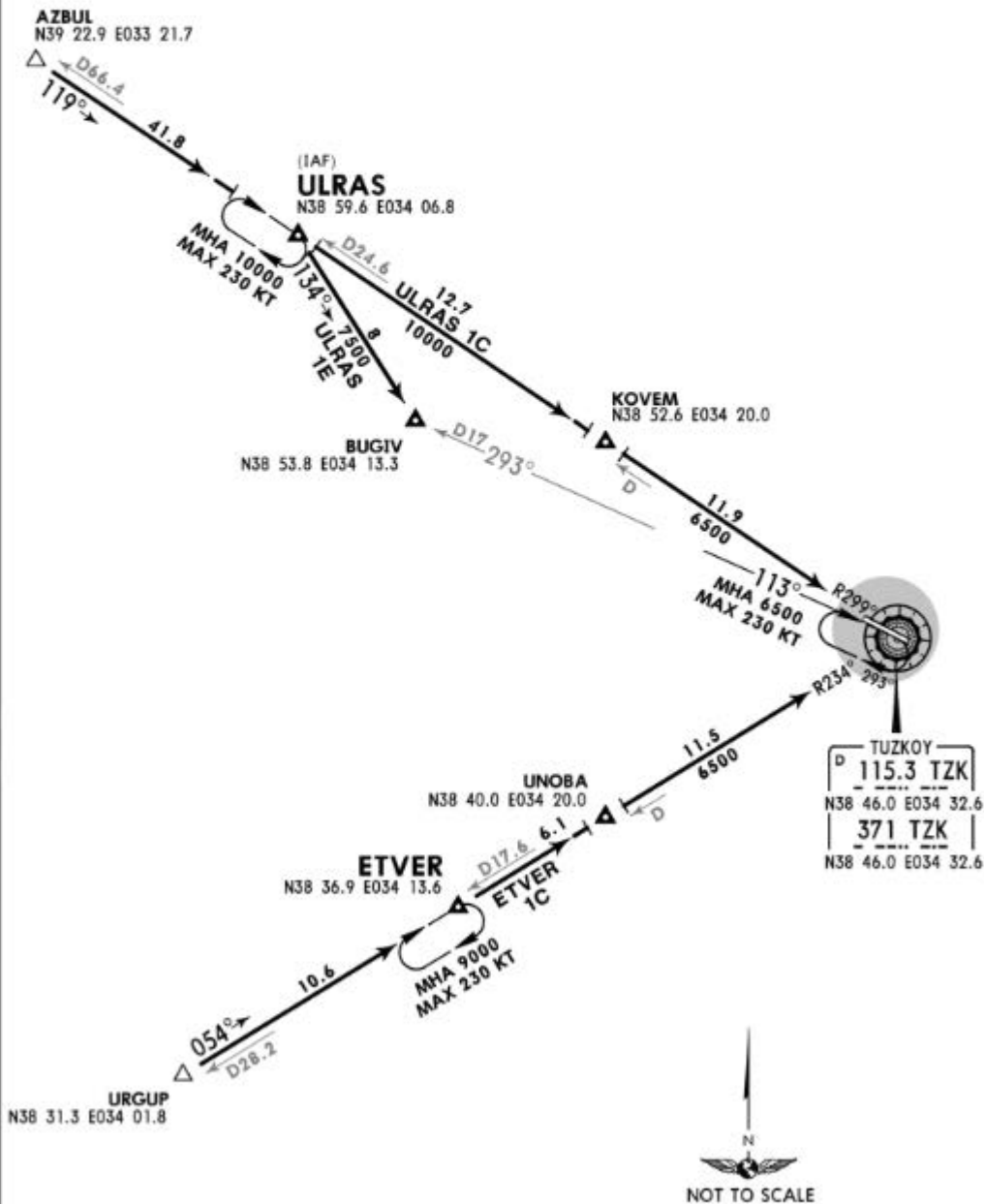
+ATIS
119.375

Apt Elev
3087'

Alt Set: hPa
Trans level: By ATC Trans alt: 10000'



ETVER 1C [ETVE1C]
ULRAS 1C [ULRA1C], ULRAS 1E [ULRA1E]
RWYS 11, 29 ARRIVALS

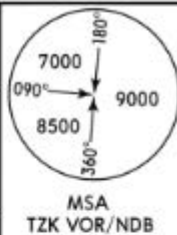


LTAZ/NAV KAPADOKYA

JEPPESEN
16 FEB 18 **(11-1) Eff 1 Mar**

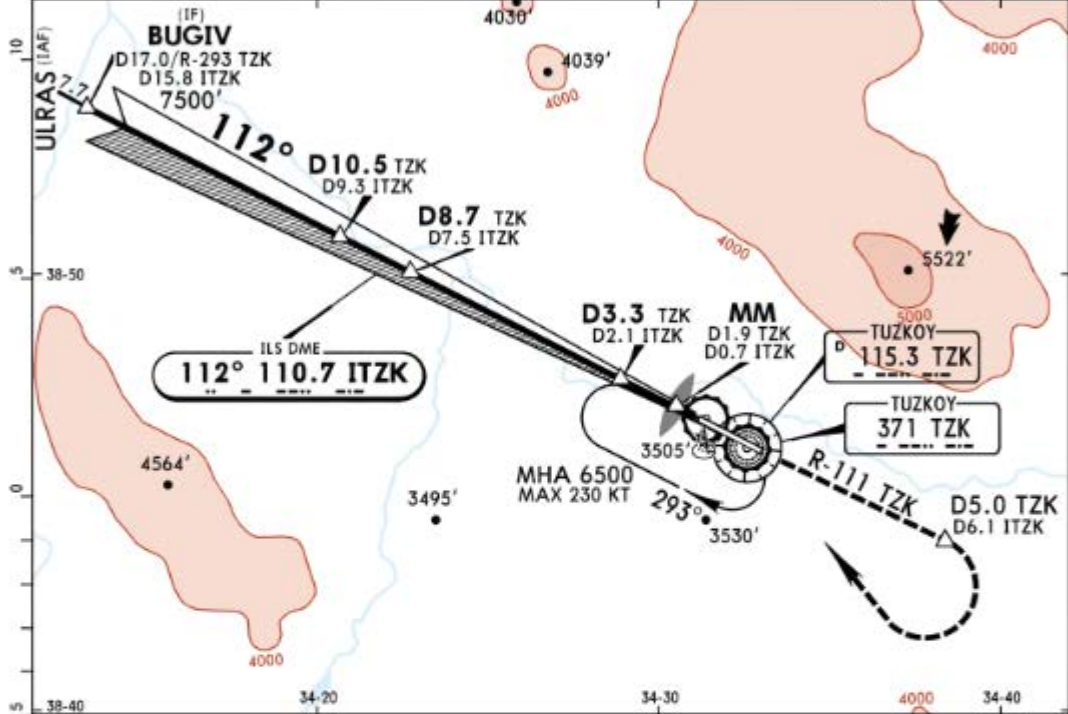
KAPADOKYA, TURKEY ILS DME-1 Rwy 11

*ATIS 119.375		*TUZKOY Approach 119.250 120.35		*TUZKOY Tower 119.250 120.35		*Ground 121.7
LOC ITZK 110.7	Final Apch Crs 112°	GS D8.7 TZK 5500' (2438')	ILS DA(H) 3310' (248')	Apt Elev 3087' Rwy 3062'		

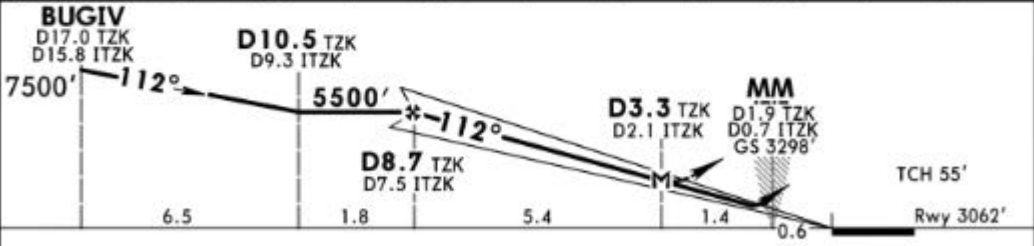


MISSED APCH: Climb on R-111 TZK to D5.0 TZK/D6.1 ITZK, then climbing turn RIGHT to 6500' to VOR and hold. MAX 185 KT until inbound VOR.
If unable to reach 6500' at VOR proceed via R-315 TZK to 5700', then climbing turn LEFT to cross VOR at 6500' and hold.

Alt Set: hPa Rwy Elev: 107 hPa Trans level: By ATC Trans alt: 10000'



LOC	ITZK DME	7.0	6.0	5.0	4.0	3.0
(GS out)	ALTITUDE	5340'	5020'	4700'	4380'	4060'



Gnd speed-Kts	70	90	100	120	140	160	HIALS-II	185 KT MAX	D5.0 TZK D6.1 ITZK via 115.3 R-111
ILS GS or LOC Descent Angle	3.00°	372	478	531	637	743	849	REIL PAPI	

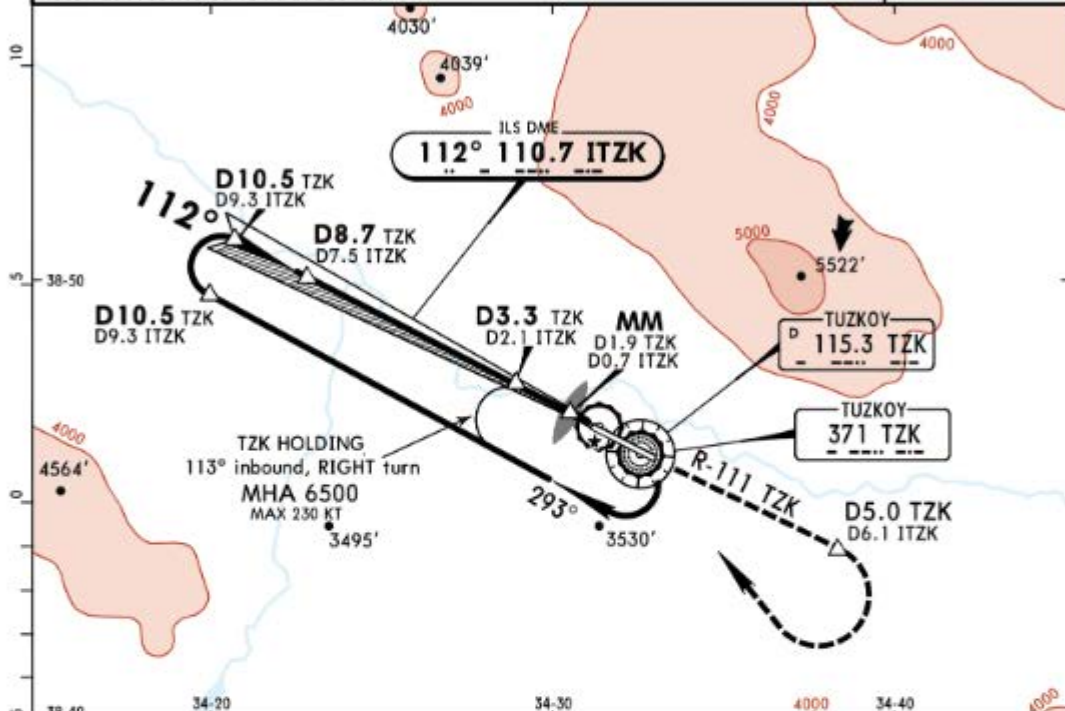
Standard				STRAIGHT-IN LANDING RWY 11				CIRCLE-TO-LAND			
ILS				LOC (GS out) CDFA				CAUTION: Not authorized North, Northeast of airport			
DA(H) 3310' (248')				DA/MDA(H) 3800' (738')							
FULL		TDZ or CL out		ALS out		ALS out		Max Kts		MDA(H) VIS	
A								100	3850'	(763')	1500m
B								135	3850'	(763')	1600m
C	RVR 550m	RVR 550m	RVR 1300m					180	4200'	(1113')	2400m
D								205	4200'	(1113')	3600m

LTAZ/NAV
KAPADOKYA

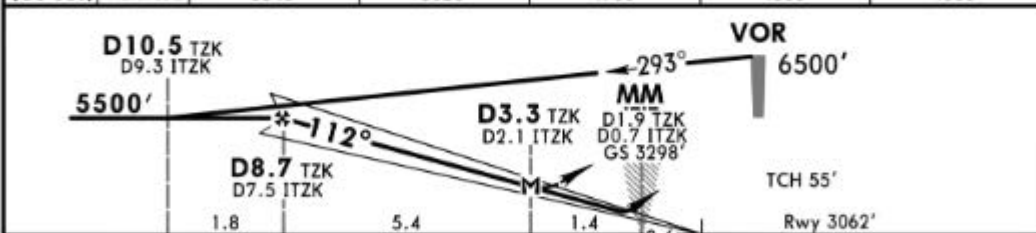
JEPPESEN
16 FEB 18 **(11-2) Eff 1 Mar**

KAPADOKYA, TURKEY
ILS DME-2 Rwy 11

*ATIS 119.375		*TUZKOY Approach 119.250 120.35		*TUZKOY Tower 119.250 120.35		*Ground 121.7
LOC ITZK 110.7	Final Apch Crs 112°	GS D8.7 TZK 5500' (2438')	ILS DA(H) 3310' (248')	Apt Elev 3087' Rwy 3062'		
MISSED APCH: Climb on R-111 TZK to D5.0 TZK/D6.1 ITZK, then climbing turn RIGHT to 6500' to VOR and hold. MAX 185 KT until inbound VOR. If unable to reach 6500' at VOR proceed via R-315 TZK to 5700', then climbing turn LEFT to cross VOR at 6500' and hold.						
Alt Set: hPa		Rwy Elev: 107 hPa	Trans level: By ATC		Trans alt: 10000'	
Racetrack restricted to MAX 230 KT.						



LOC	ITZK DME	7.0	6.0	5.0	4.0	3.0
(GS out)	ALTITUDE	5340'	5020'	4700'	4380'	4060'



Gnd speed-Kts	70	90	100	120	140	160	HIALS-II	185 KT MAX	D5.0 TZK D6.1 ITZK via 115.3 ↑ R-111
ILS GS or LOC Descent Angle	3.00°	372	478	531	637	743	849		
MAP at D3.3 TZK/D2.1 ITZK									

Standard					STRAIGHT-IN LANDING RWY 11			CIRCLE-TO-LAND			
ILS					LOC (GS out)			CAUTION: Not authorized North, Northeast of airport			
DA(H) 3310' (248')					CDFA			DA/MDA(H) 3800' (738')			
FULL		TDZ or CL out		ALS out		ALS out		Max Kts		MDA(H)	VIS
A		B		C		D		100	135	180	205
RVR 550m		RVR 550m		RVR 1300m		RVR 1500m		3850' (763')	3850' (763')	4200' (1113')	4200' (1113')
W/o HUD/AP/FD: RVR 750m						RVR 2400m					

PANS OPS

CHANGES: PAPI. Minimums.

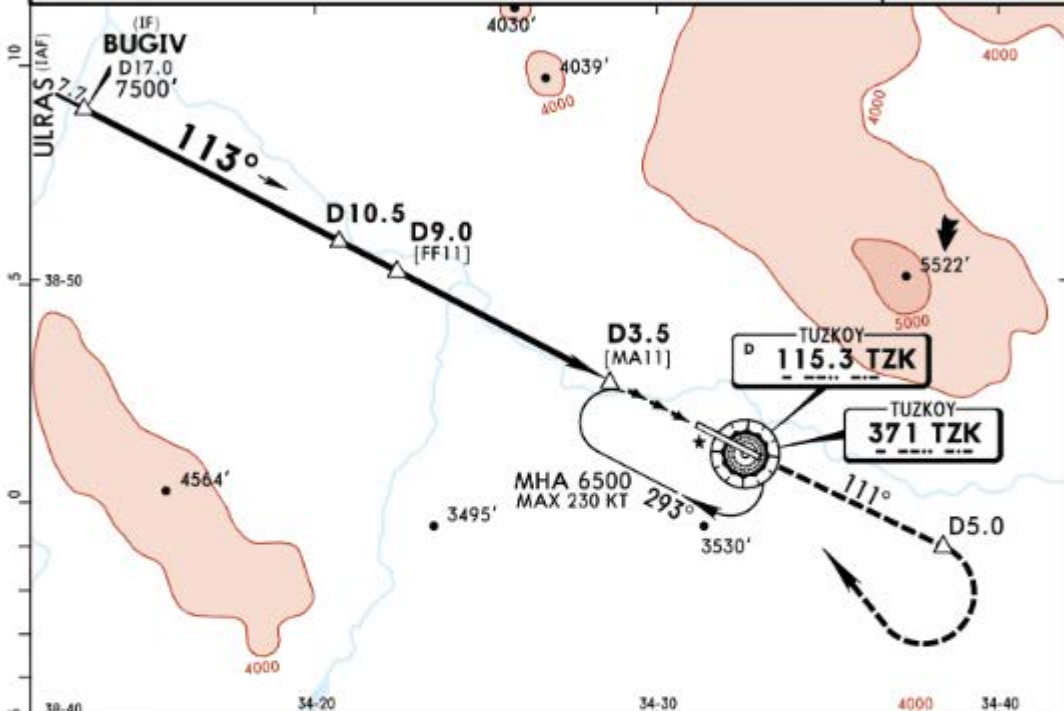
© JEPPESEN, 2003, 2018. ALL RIGHTS RESERVED.

LTAZ/NAV
KAPADOKYA

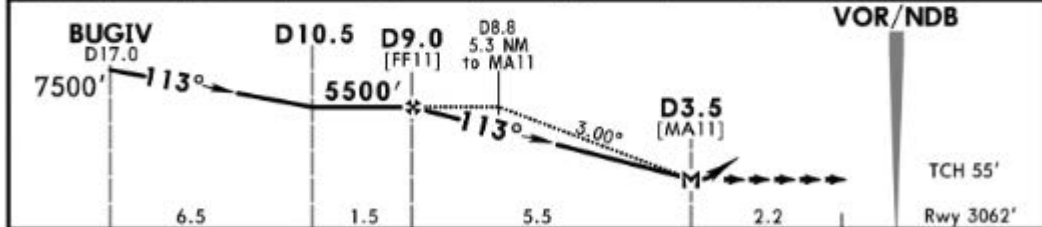
JEPPESEN
16 FEB 18
Eff 1 Mar

KAPADOKYA, TURKEY
13-VOR DME-1 or NDB DME-1 Rwy 11

*ATIS 119.375		*TUZKOY Approach 119.250 120.35		*TUZKOY Tower 119.250 120.35		*Ground 121.7
VOR TZK 115.3	NDB TZK 371	Final Apch Crs 113°	Minimum Alt D9.0 5500' (2438')	DA/MDA(H) 3800' (738')	Apt Elev 3087' Rwy 3062'	<p>MSA TZK VOR/NDB</p>
<p>MISSED APCH: Climb on R-111 (111° from NDB) to D5.0, then climbing turn RIGHT to 6500' to VOR/NDB and hold. MAX 185 KT until inbound VOR.</p>						
Alt Set: hPa	Rwy Elev: 107 hPa	Trans level: By ATC		Trans alt: 10000'		



TZK DME	8.0	7.0	6.0	5.0	4.0
ALTITUDE	5250'	4930'	4610'	4300'	3980'



Grnd speed-Kts	70	90	100	120	140	160	HIALS-II REIL PAPI Refer to Missed Apch above
Descent Angle 3.00°	372	478	531	637	743	849	

Standard				STRAIGHT-IN LANDING RWY 11		CIRCLE-TO-LAND CAUTION: Not authorized North, Northeast of airport	
CDFA DA/MDA(H) 3800' (738')		non-CDFA MDA(H) 3800' (738')		Max Kts	MDA(H)	VIS	
ALS out		ALS out					
A	RVR 1500m		RVR 2900m	100	3850' (763')	1500m	
B	RVR 2400m		RVR 3100m	135	3850' (763')	1600m	
C	RVR 1500m		RVR 2900m	180	4200' (1113')	2400m	
D	RVR 2400m		RVR 3100m	205	4200' (1113')	3600m	

PANS OPS

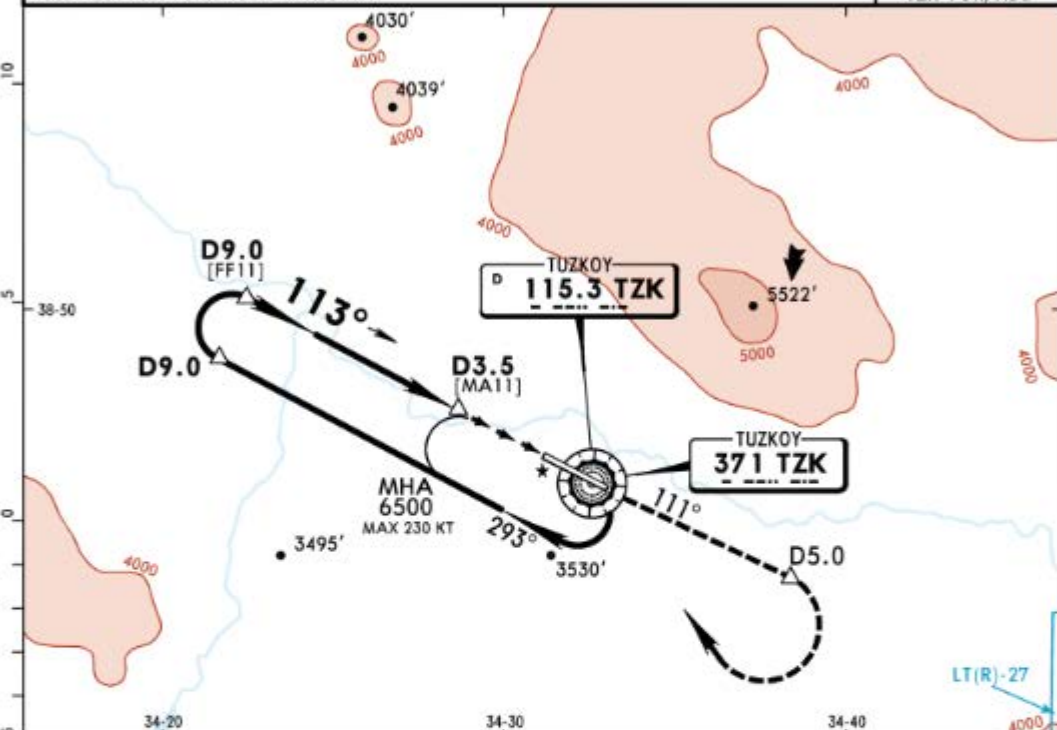
1 or higher straight-in minimums.

LTAZ/NAV
KAPADOKYA

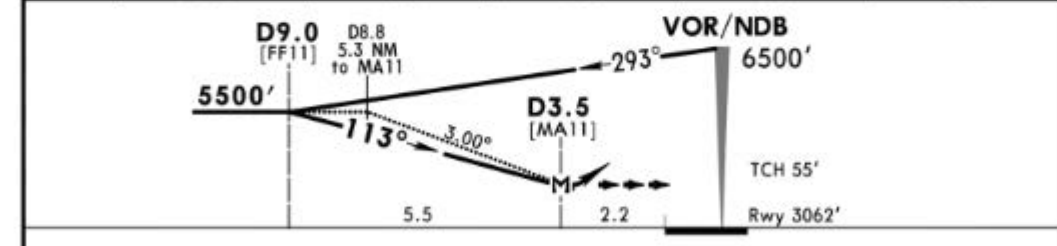
JEPPESEN
16 FEB 18
Eff 1 Mar **13-2**

KAPADOKYA, TURKEY
VOR DME-2 or NDB DME-2 Rwy 11

*ATIS 119.375		*TUZKOY Approach 119.250 120.35		*TUZKOY Tower 119.250 120.35		*Ground 121.7
VOR TZK 115.3	NDB TZK 371	Final Apch Crs 113°	Minimum Alt D9.0 5500 (2438')	DA/MDA(H) 3800' (738')	Apt Elev 3087' Rwy 3062'	
MISSED APCH: Climb on R-111 (111° from NDB) to D5.0, then climbing turn RIGHT to 6500' to VOR/NDB and hold. MAX 185 KT until inbound VOR.						
Alt Set: hPa		Rwy Elev: 107 hPa		Trans level: By ATC		Trans alt: 10000'
Racetrack restricted to MAX 230 KT.						



TZK DME	8.0	7.0	6.0	5.0	4.0
ALTITUDE	5250'	4930'	4610'	4300'	3980'



Gnd speed-Kts	70	90	100	120	140	160	HIALS-II REIL PAPI Refer to Missed Apch above
Descent Angle 3.00°	372	478	531	637	743	849	
MAP at D3.5							

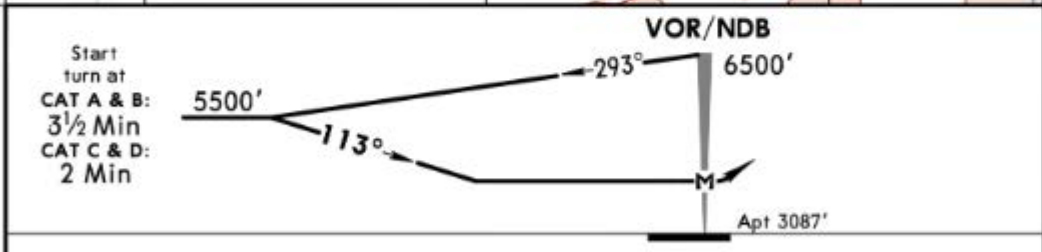
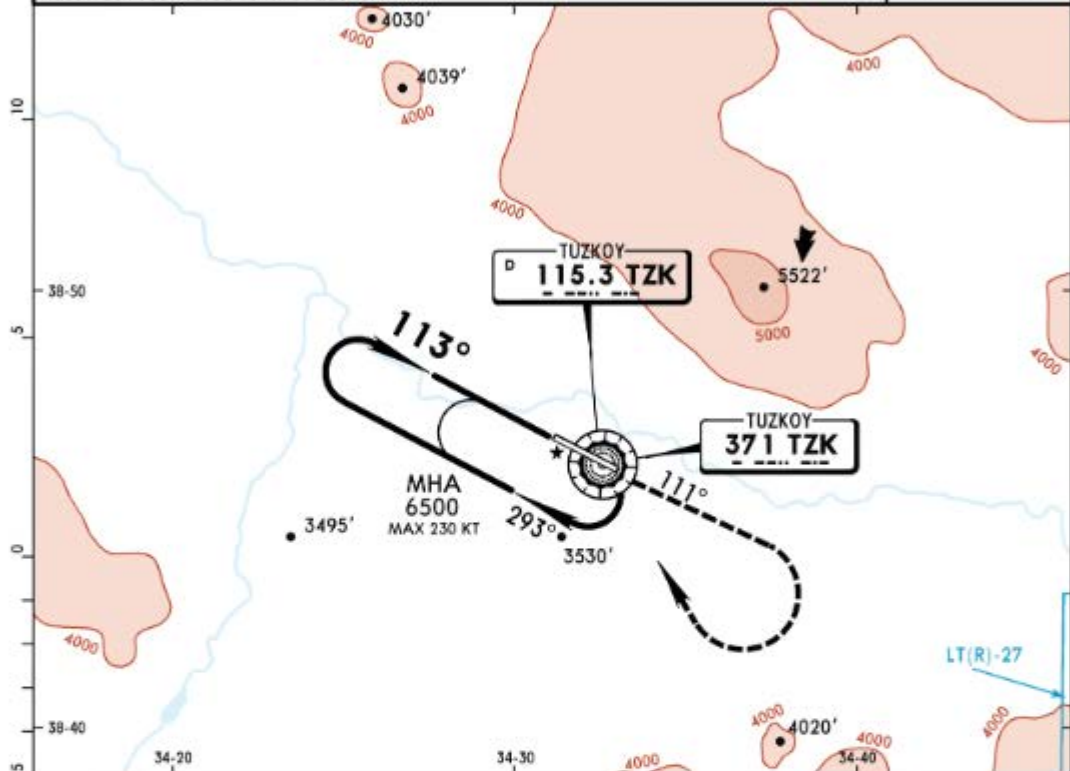
PANS OPS I or higher straight-in minimums.	Standard STRAIGHT-IN LANDING RWY 11			CIRCLE-TO-LAND CAUTION: Not authorized North, Northeast of airport		
	CDFA DA/MDA(H) 3800' (738')		non-CDFA MDA(H) 3800' (738')		Max Kts	MDA(H) VIS
	ALS out		ALS out			
	A	RVR 1500m	RVR 2900m	RVR 3600m	100	3850' (763') I 1500m
	B	RVR 2400m	RVR 3100m	RVR 3800m	135	3850' (763') I 1600m
C				180	4200' (1113') I 2400m	
D				205	4200' (1113') I 3600m	

LTAZ/NAV KAPADOKYA

JEPPESEN
16 FEB 18 **13-3** Eff 1 Mar

KAPADOKYA, TURKEY VOR or NDB

*ATIS 119.375		*TUZKOY Approach 119.250 120.35		*TUZKOY Tower 119.250 120.35		*Ground 121.7
VOR TZK 115.3	NDB TZK 371	Final Apch Crs 113°	Minimum Alt No FAF	MDA(H) Refer to Minimums	Apt Elev 3087'	
MISSED APCH: Climb on R-111 (111° from NDB) to 4700', then climbing turn RIGHT to 6500' to VOR/NDB and hold. MAX 185 KT until inbound VOR/NDB. If unable to reach 6500' at VOR/NDB proceed via R-315 (315° from NDB) to 5600', then climbing turn LEFT to cross VOR/NDB at 6500' and hold.						<p>MSA TZK VOR/NDB</p>
Alt Set: hPa		Apt Elev: 108 hPa	Trans level: By ATC		Trans alt: 10000'	



MAP at VOR/NDB				Lighting - Refer to Airport Chart	Refer to Missed Apch above
----------------	--	--	--	-----------------------------------	----------------------------

Standard CIRCLE-TO-LAND

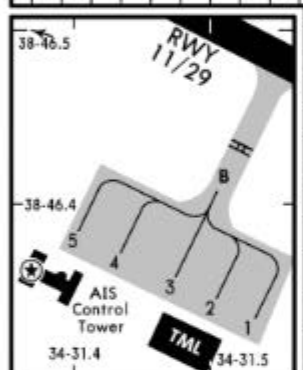
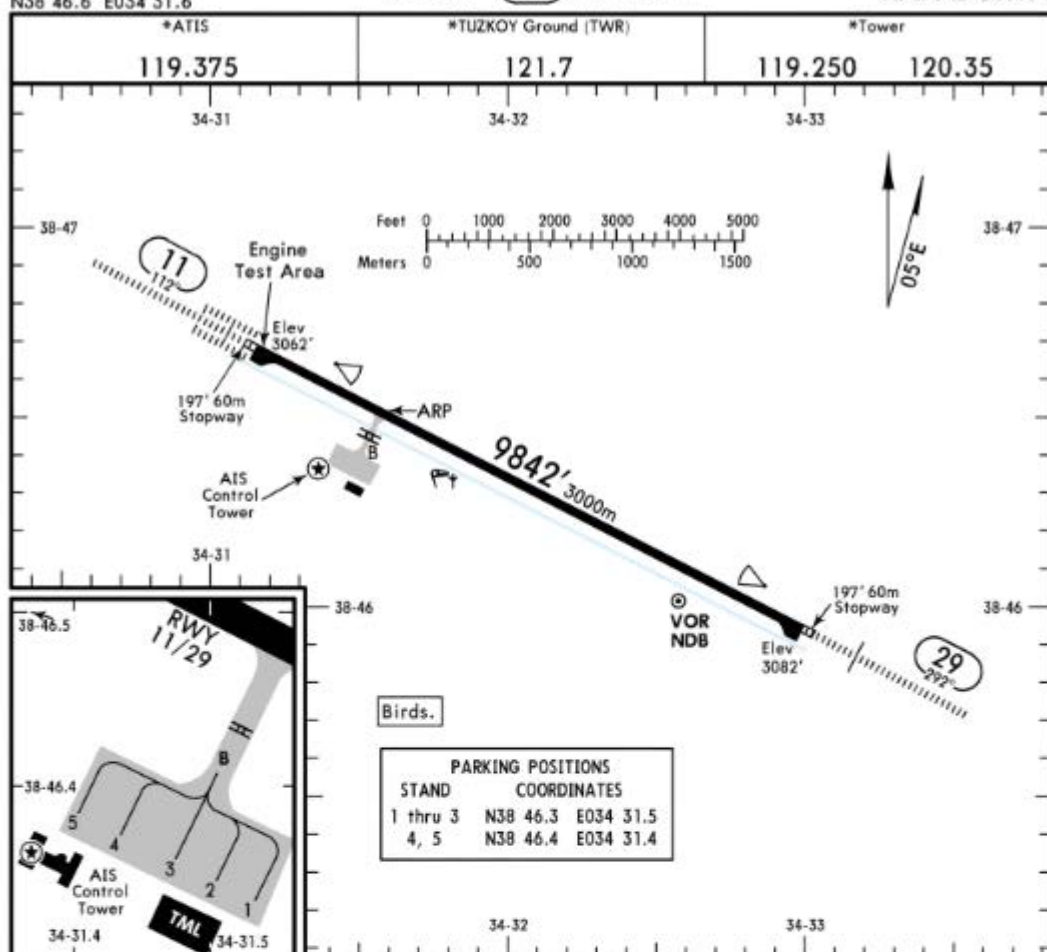
CAUTION: Not authorized North, Northeast of airport

PANS OPS	Max Kts	MDA(H)		VIS
A	100	3850'	(763')	1500m
B	135	3850'	(763')	1600m
C	180	4200'	(1113')	2400m
D	205	4200'	(1113')	3600m

LTAZ/NAV
Apt Elev 3087'
N38 46.6 E034 31.6

JEPPESEN
16 FEB 18 10-9 Eff 1 Mar

KAPADOKYA, TURKEY
KAPADOKYA



Birds.

PARKING POSITIONS	
STAND	COORDINATES
1 thru 3	N38 46.3 E034 31.5
4, 5	N38 46.4 E034 31.4

ADDITIONAL RUNWAY INFORMATION

RWY	USABLE LENGTHS			WIDTH
	LANDING BEYOND	TAKE-OFF		
	Threshold	Glide Slope		
11	HIRL (60m) CL (15m) HIALS-II SFL TDZ ① REIL ② RVR		③	148'
29	HIRL (60m) CL (15m) HIALS SFL REIL ② RVR	8932' 2722m		45m

① The innermost TDZ lights are not located in same alignment with innermost TDZ markings.

② PAPI-L (3.0°)

③ TAKE-OFF RUN AVAILABLE

RWY 11:

From rwy head	9,842' (3000m)
twy B int	7,480' (2280m)

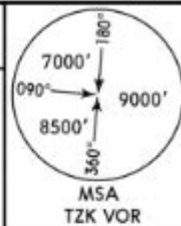
Standard

TAKE-OFF

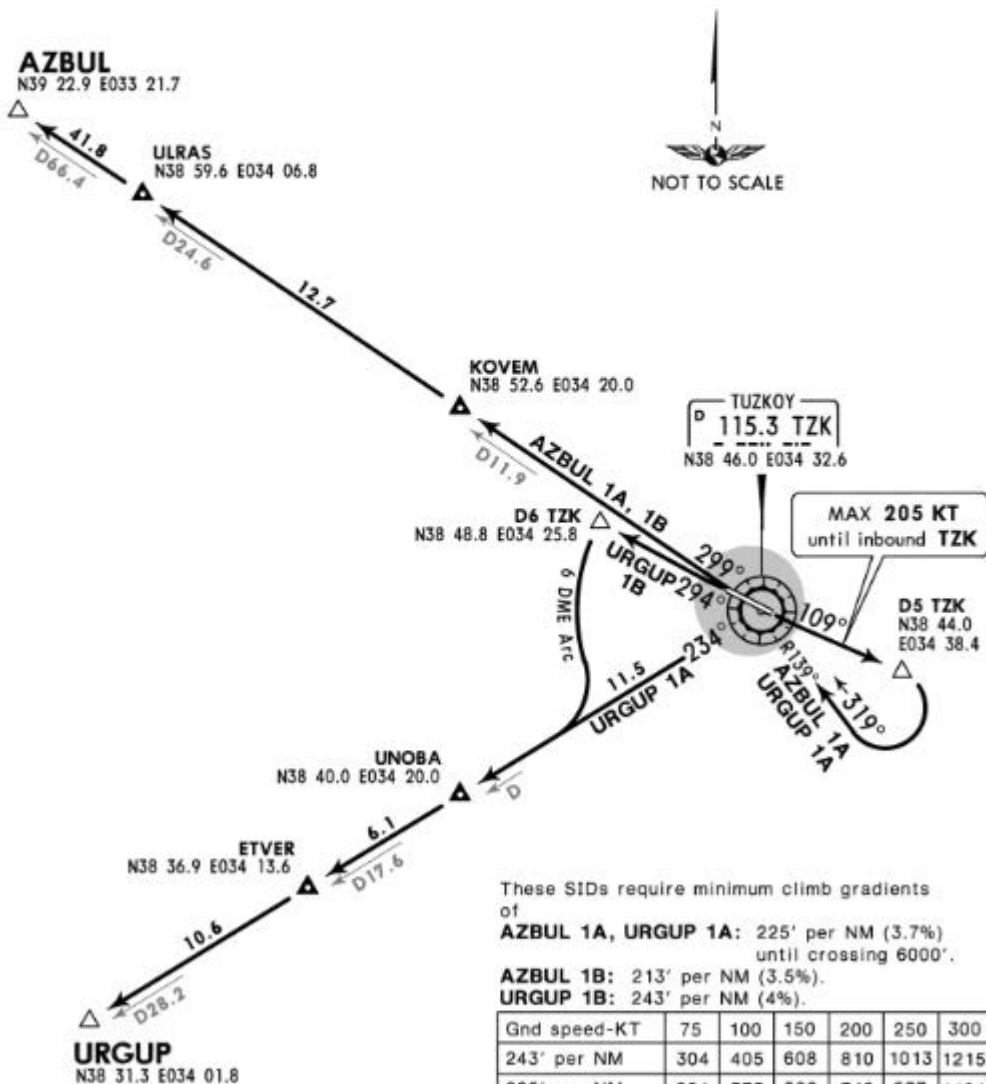
Low Visibility Take-off

	HIRL, CL & relevant RVR	RL, CL & relevant RVR	RL & CL	Day: RL & RCLM Night: RL or CL	Day: RL or RCLM Night: RL or CL	Adequate vis ref (Day only)
A						
B	TDZ, MID, RO	TDZ, MID, RO				
C	RVR 125m	RVR 150m	RVR 200m	RVR 300m	400m	500m
D						

Apt Elev 3087' Trans level: By ATC Trans alt: 10000'



AZBUL ONE ALFA (AZBUL 1A) [AZBU1A]
AZBUL ONE BRAVO (AZBUL 1B) [AZBU1B]
URGUP ONE ALFA (URGUP 1A) [URGU1A]
URGUP ONE BRAVO (URGUP 1B) [URGU1B]
RWYS 11, 29 DEPARTURES



These SIDs require minimum climb gradients of
AZBUL 1A, URGUP 1A: 225' per NM (3.7%) until crossing 6000'.
AZBUL 1B: 213' per NM (3.5%).
URGUP 1B: 243' per NM (4%).

Gnd speed-KT	75	100	150	200	250	300
243' per NM	304	405	608	810	1013	1215
225' per NM	281	375	562	749	937	1124
213' per NM	266	354	532	709	886	1063

SID	RWY	ROUTING
AZBUL 1A	11	Climb on TZK R-109 to D5 TZK, turn RIGHT, intercept TZK R-139 inbound to TZK, TZK R-299 to AZBUL.
AZBUL 1B	29	Turn RIGHT, intercept TZK R-299 to AZBUL.
URGUP 1A	11	Climb on TZK R-109 to D5 TZK, turn RIGHT, intercept TZK R-139 inbound to TZK, TZK R-234 to URGUP.
URGUP 1B	29	Climb on TZK R-294 to D6 TZK, turn LEFT, along TZK 6 DME arc, intercept TZK R-234 to URGUP.