

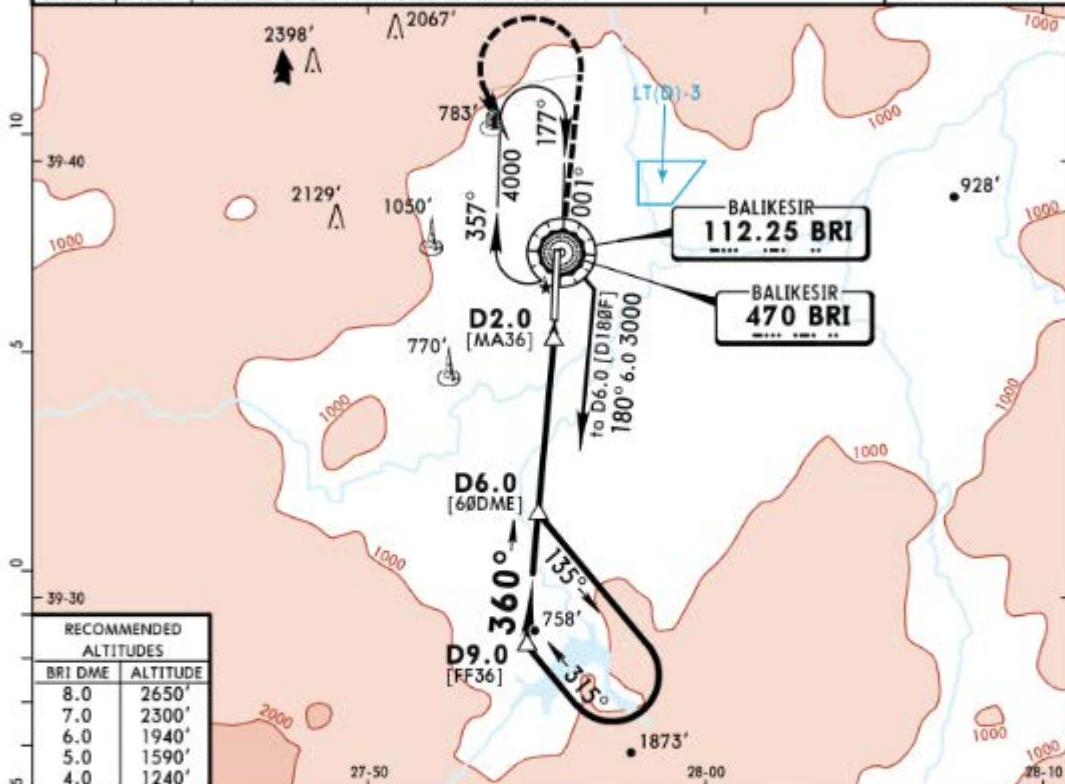
LTBF/BZI  
MERKEZ

CAT C & D

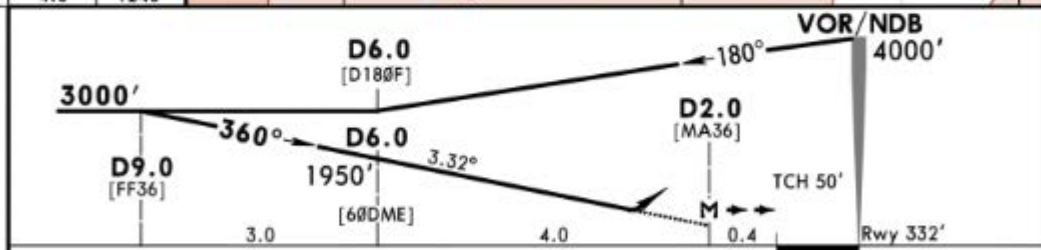
JEPPESEN  
25 JAN 19  
Eff 31 Jan (23-1)

BALIKESIR, TURKEY  
VOR Z or NDB Z Rwy 36

ATIS 127.225			BALIKESIR Approach 122.1		BALIKESIR Tower 122.1		
VOR BRI <b>112.25</b>	NDB BRI <b>470</b>	Final Apch Crs <b>360°</b>	Minimum Alt <b>D9.0</b> 3000' (2668')	DA/MDA(H) <b>1100'</b> (768')	Apt Elev 340'	Rwy 332'	
<b>MISSED APCH: Climb on R-001 (001° from NDB) to 2600', then turn LEFT climbing to 4000'. Proceed to VOR/NDB and hold.</b>							
Alt Set: hPa		Rwy Elev: 12 hPa		Trans level: By ATC		Trans alt: 10000'	MSA BRI VOR/NDB
DME required. Procedure turn restricted to MAX 185 KT.							



RECOMMENDED ALTITUDES	
BRI DME	ALTITUDE
8.0	2650'
7.0	2300'
6.0	1940'
5.0	1590'
4.0	1240'



Grnd speed-Kts	70	90	100	120	140	160	HIALS PAPI PAPI 2600' on R-001 BRI 112.25 or 470 001° from BRI
Descent Angle	3.32°	411	529	587	705	822	
MAP at D2.0							

PANS OPS	Standard	STRAIGHT-IN LANDING RWY 36 CDFA DA/MDA(H) <b>1100'</b> (768')	ALS out	Max Kts	CIRCLE-TO-LAND	MDA(H)	VIS
	A	NOT AUTHORIZED		A	NOT AUTHORIZED		
	B	NOT AUTHORIZED		B	NOT AUTHORIZED		
	C	RVR 2400m		180	1800'	(1460')	2400m
D			205	2600'	(2260')	3600m	

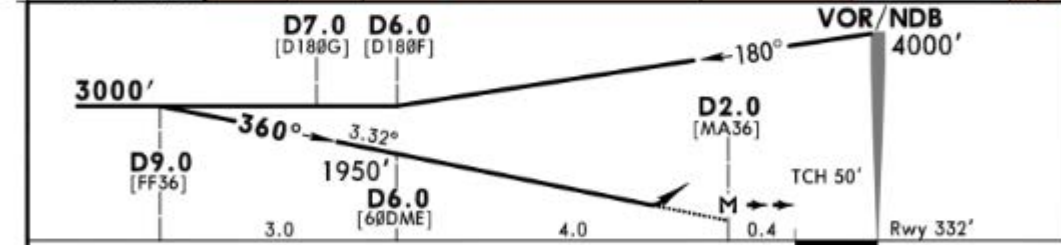
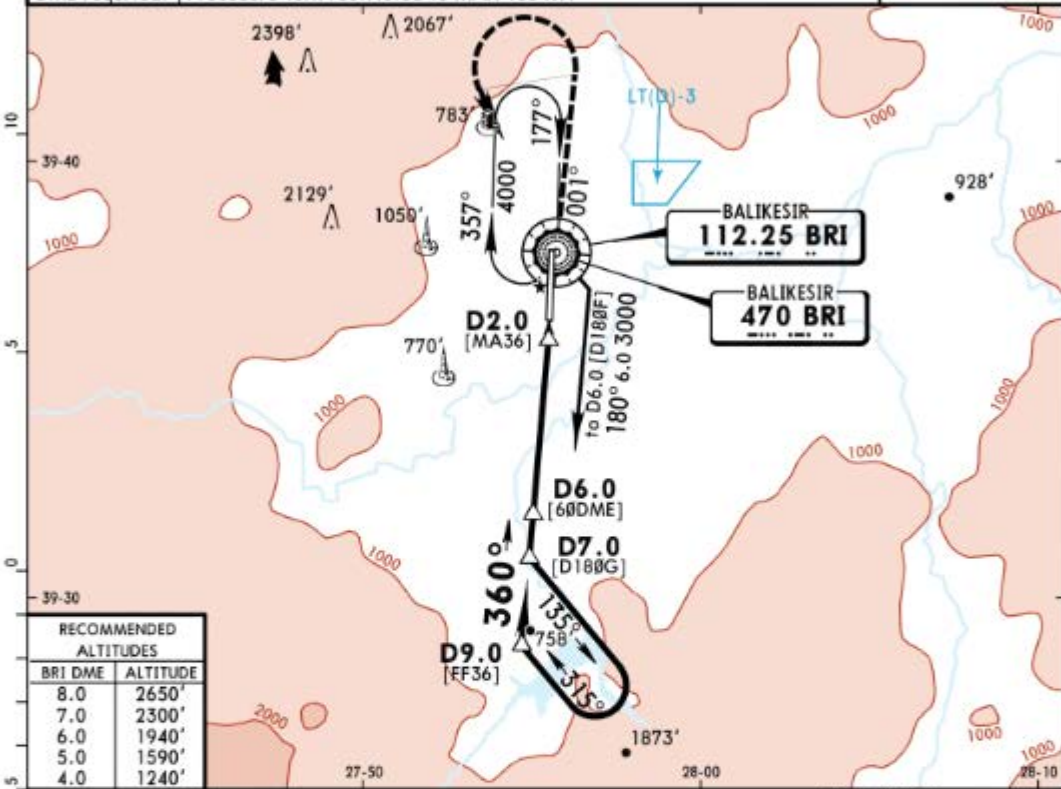
LTBF/BZI  
MERKEZ

CAT A & B

JEPPESEN  
25 JAN 19  
Eff 31 Jan (23-2)

BALIKESIR, TURKEY  
VOR Y or NDB Y Rwy 36

ATIS 127.225			BALIKESIR Approach 122.1			BALIKESIR Tower 122.1		
VOR BRI <b>112.25</b>	NDB BRI <b>470</b>	Final Aph Crs <b>360°</b>	Minimum Alt D9.0 <b>3000'</b> (2668')	DA/MDA(H) <b>1100'</b> (768')	Apt Elev 340'	Rwy 332'		
<b>MISSED APCH:</b> Climb on R-001 (001° from NDB) to 2500', then turn LEFT climbing to 4000'. Proceed to VOR/NDB and hold.								
Alt Set: hPa			Rwy Elev: 12 hPa		Trans level: By ATC		Trans alt: 10000'	
DME required.			Procedure turn restricted to MAX 185 KT.					
								MSA BRI VOR/NDB



Gnd speed-Kts	70	90	100	120	140	160		2500'	BRI	001°
Descent Angle	3.32°	411	529	587	705	822	940	↑	on 112.25	from
MAP at D2.0									R-001	BRI
										470

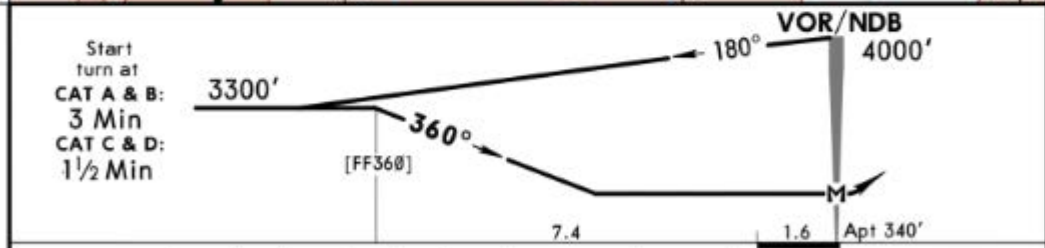
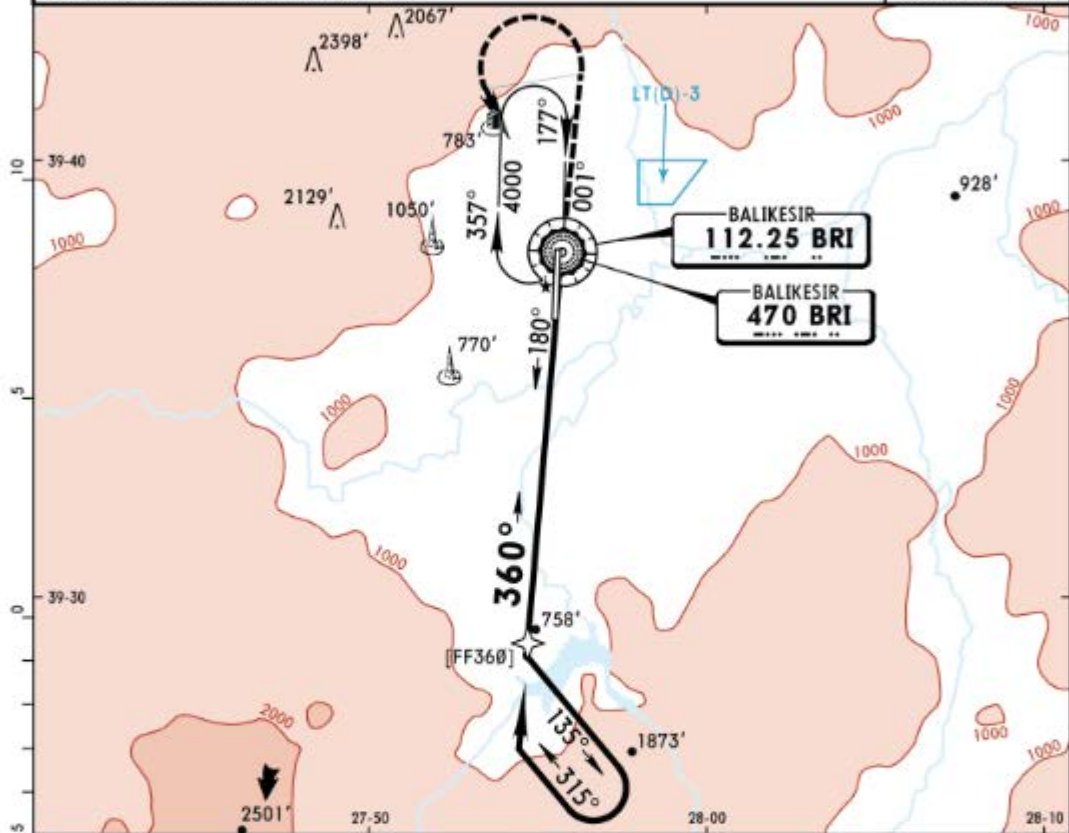
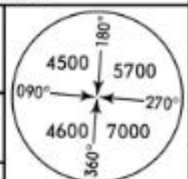
PANS OPS	<b>Standard</b> STRAIGHT-IN LANDING RWY 36 CDFA			CIRCLE-TO-LAND		
	DA/MDA(H) <b>1100'</b> (768')					
	ALS out			Max Kts	MDA(H)	VIS
	A	RVR 1500m		100	1400'	1500m
B			135	1400'	1600m	
C	NOT AUTHORIZED			C	NOT AUTHORIZED	
D				D		

LTBF/BZI  
MERKEZ

JEPPESEN  
25 JAN 19 **23-3** Eff 31 Jan

BALIKESIR, TURKEY  
VOR A or NDB A

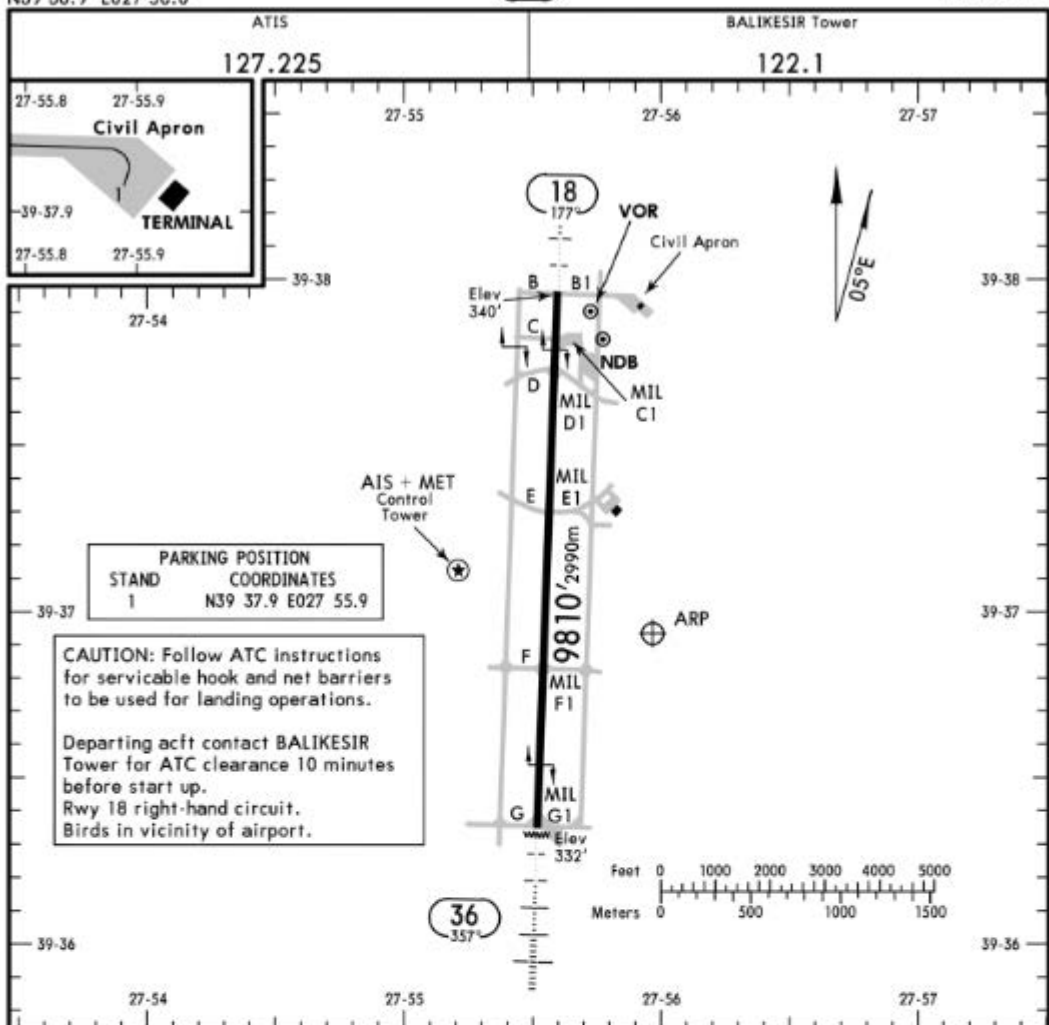
ATIS 127.225		BALIKESIR Approach 122.1			BALIKESIR Tower 122.1
VOR BRI <b>112.25</b>	NDB BRI <b>470</b>	Final Apch Crs <b>360°</b>	No FAF	MDA(H) Refer to Minimums	Apt Elev 340'
<b>MISSED APCH: Climb on R-001 (001° from NDB) to 2600', then turn LEFT climbing to 4000'. Proceed to VOR/NDB and hold.</b>					
Alt Set: hPa		Apt Elev: 12 hPa	Trans level: By ATC		Trans alt: 10000'
Procedure turn restricted to MAX 185 KT.					MSA BRI VOR/NDB



Start turn at CAT A & B: 3 Min CAT C & D: 1½ Min	[FF360]	Lighting - Refer to Airport Chart	2600' on R-001	BRI 112.25 or 470	001° from BRI 470
--	---------	-----------------------------------	----------------	-------------------	-------------------

MAP at VOR **Standard** CIRCLE-TO-LAND

PANS OPS	Max Kts	MDA(H)		VIS
		ft	m	
A	100	1400'	(1060')	1500m
B	135	1400'	(1060')	1600m
C	180	1800'	(1460')	2400m
D	205	2600'	(2260')	3600m



ADDITIONAL RUNWAY INFORMATION

RWY				USABLE LENGTHS		TAKE-OFF	WIDTH
				LANDING BEYOND			
	HIRL (60m)	HIALS	PAPI (angle 3.2°)	Threshold	Glide Slope		
18	HIRL (60m)	HIALS	PAPI (angle 3.2°)				148'
36	HIRL (60m)	HIALS	SFL PAPI (angle 3.0°)		8777' 2675m	1	45m

1 TAKE-OFF RUN AVAILABLE

RWY 18:

From rwy head	9810' (2990m)
twy C int	8924' (2720m)
twy D int	8268' (2520m)
twy E int	5741' (1750m)

RWY 36:

From rwy head	9810' (2990m)
twy F int	6890' (2100m)
twy E int	4068' (1240m)

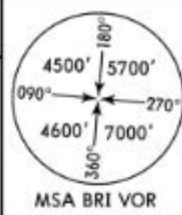
Standard

TAKE-OFF

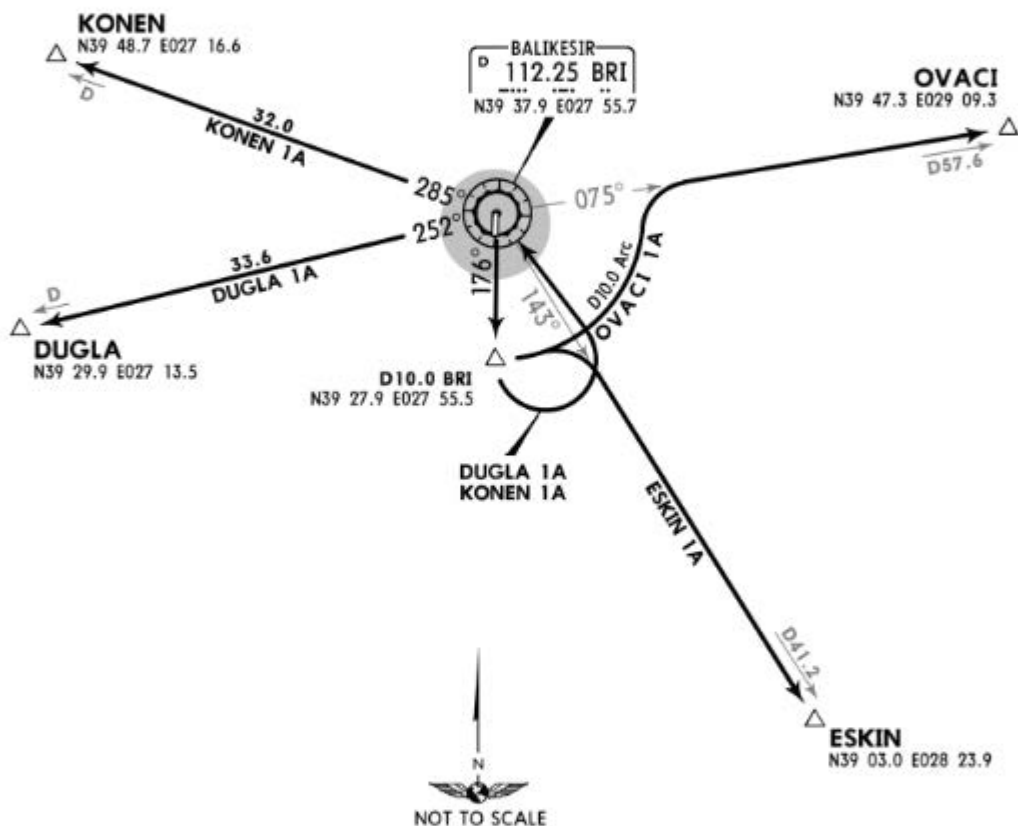
Low Visibility Take-off			
Day: RL & RCLM Night: RL		Day: RL or RCLM Night: RL	
Adequate vis ref (Day only)			
A			
B			
C	RVR 300m	400m	500m
D			

Apt Elev  
340'

Trans level: By ATC Trans alt: 10000'



DUGLA 1A [DUGL1A]  
ESKIN 1A [ESKI1A]  
KONEN 1A [KONE1A]  
OVACI 1A [OVAC1A]  
RWY 18 DEPARTURES  
BASED ON VOR



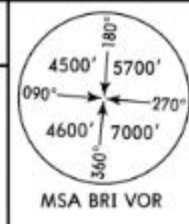
These SIDs require a minimum climb gradient of 243' per NM (4.0%) until crossing 7000'.

Gnd speed-KT	75	100	150	200	250	300
243' per NM	304	405	608	810	1013	1215

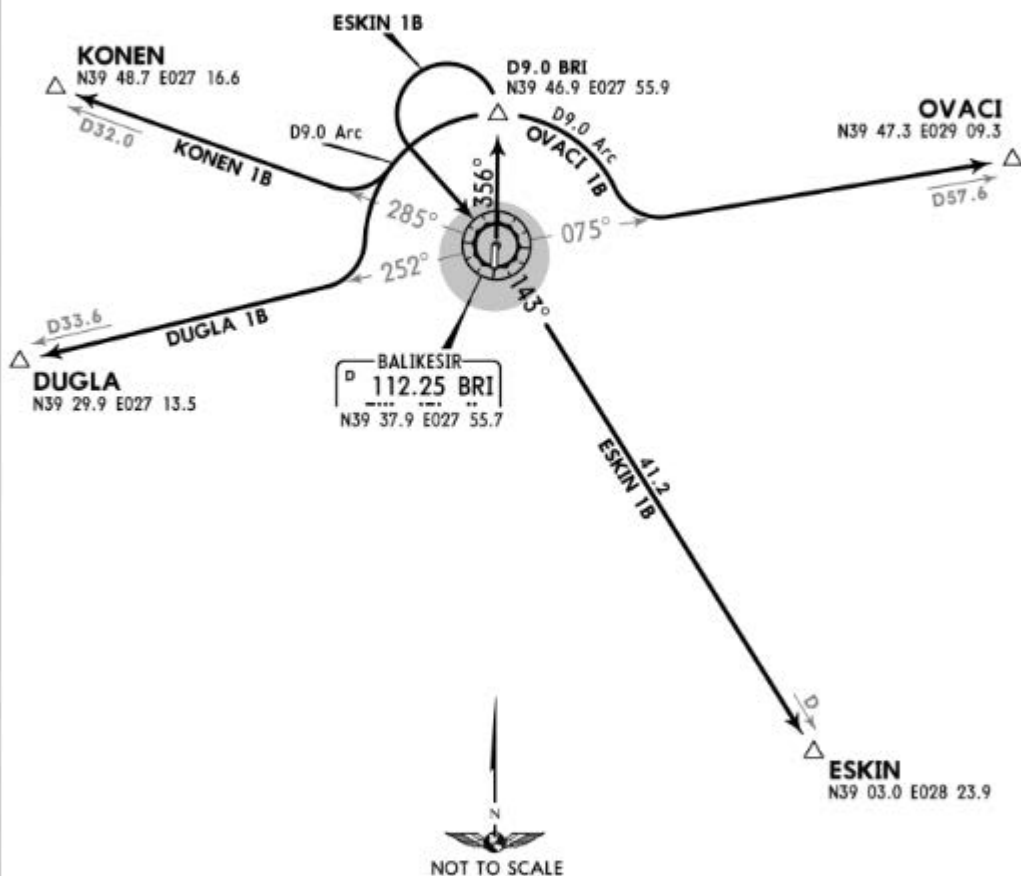
SID	ROUTING
DUGLA 1A	Climb on BRI R-176 to D10.0 BRI, turn LEFT to BRI, intercept BRI R-252 to DUGLA, then join airway.
ESKIN 1A	Climb on BRI R-176 to D10.0 BRI, turn LEFT, along D10.0 BRI arc, BRI R-143 to ESKIN, then join airway.
KONEN 1A	Climb on BRI R-176 to D10.0 BRI, turn LEFT to BRI, intercept BRI R-285 to KONEN, then join airway.
OVACI 1A	Climb on BRI R-176 to D10.0 BRI, turn LEFT, along D10.0 BRI arc, intercept BRI R-075 to OVACI, then join airway.

Apt Elev  
340'

Trans level: By ATC Trans alt: 10000'



DUGLA 1B [DUGL1B]  
ESKIN 1B [ESKI1B]  
KONEN 1B [KONE1B]  
OVACI 1B [OVAC1B]  
RWY 36 DEPARTURES  
BASED ON VOR



These SIDs require a minimum climb gradient of 273' per NM (4.5%) until crossing 7000'.

Gnd speed-KT	75	100	150	200	250	300
273' per NM	342	456	684	911	1139	1367

SID	ROUTING
DUGLA 1B	Climb on BRI R-356 to D9.0 BRI, turn LEFT, along D9.0 BRI arc, intercept BRI R-252 to DUGLA, then join airway.
ESKIN 1B	Climb on BRI R-356 to D9.0 BRI, turn LEFT to BRI, BRI R-143 to ESKIN, then join airway.
KONEN 1B	Climb on BRI R-356 to D9.0 BRI, turn LEFT, along D9.0 BRI arc, intercept BRI R-285 to KONEN, then join airway.
OVACI 1B	Climb on BRI R-356 to D9.0 BRI, turn RIGHT, along D9.0 BRI arc, intercept BRI R-075 to OVACI, then join airway.

LTBF/BZI  
MERKEZ

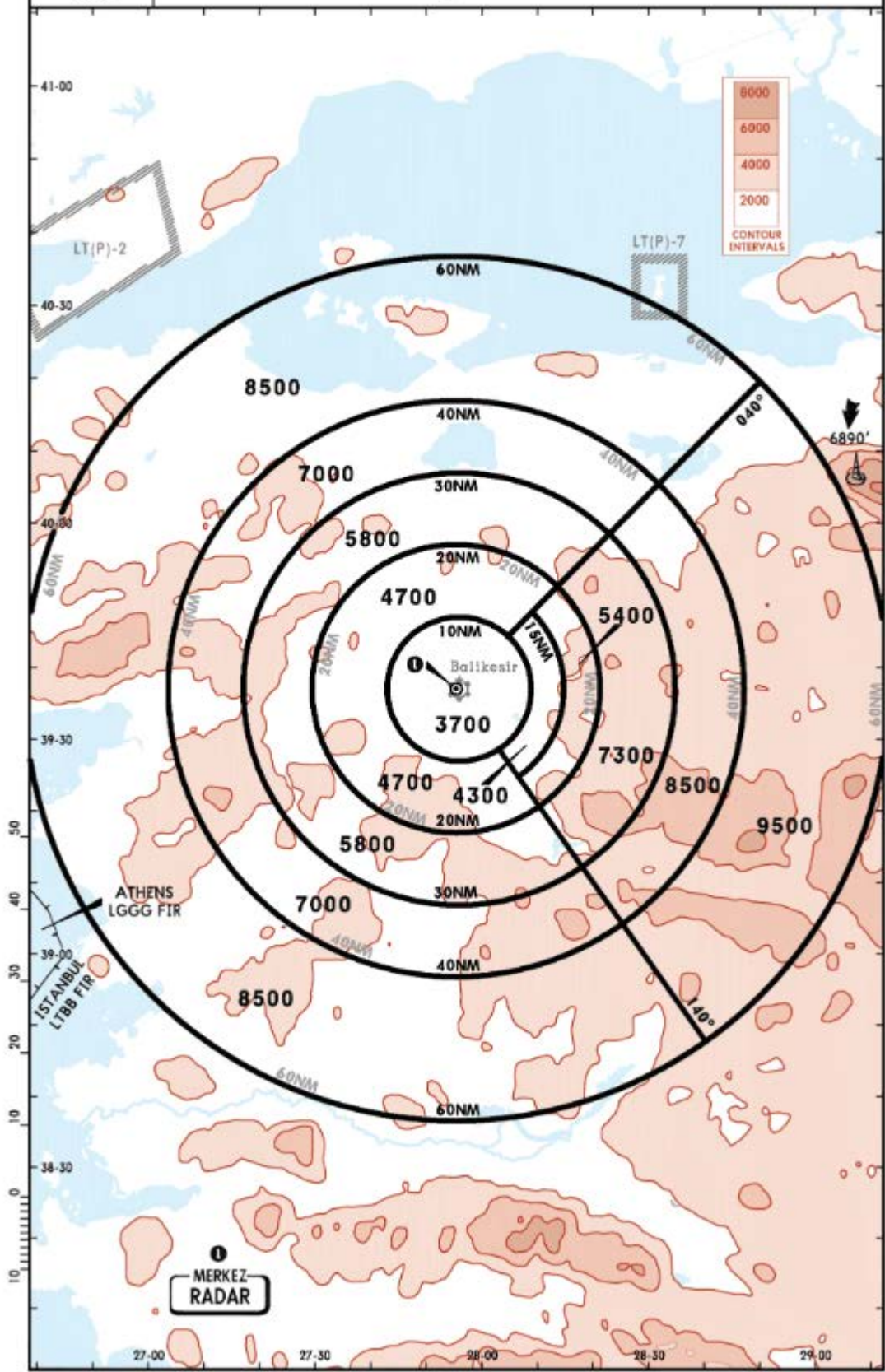
JEPPesen  
27 NOV 15 (20-1R) Eff 10 Dec

BALIKESIR, TURKEY

RADAR MINIMUM ALTITUDES

Apt Elev  
340'

Alt Set: hPa Trans level: By ATC Trans alt: 10000'



CHANGES: Sector & altitudes.

© JEPPESEN, 2014, 2015. ALL RIGHTS RESERVED.