

LTBL/IGL
CIGLI AB

24 MAR 17
Eff 30 Mar

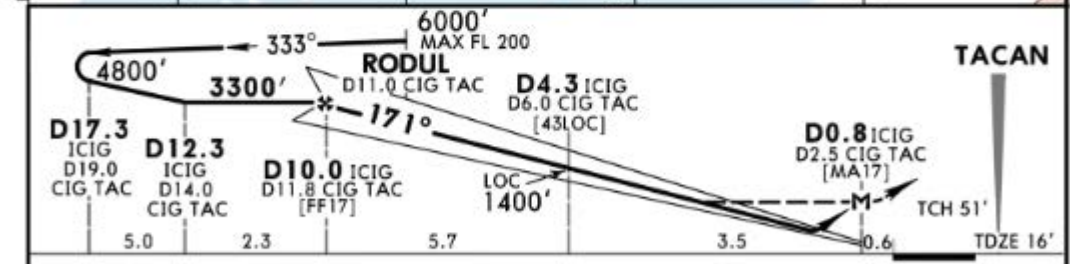
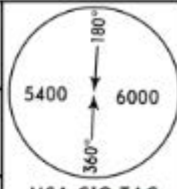
JEPPESEN

11-1

IZMIR, TURKEY

● ILS or LOC Z Rwy 17

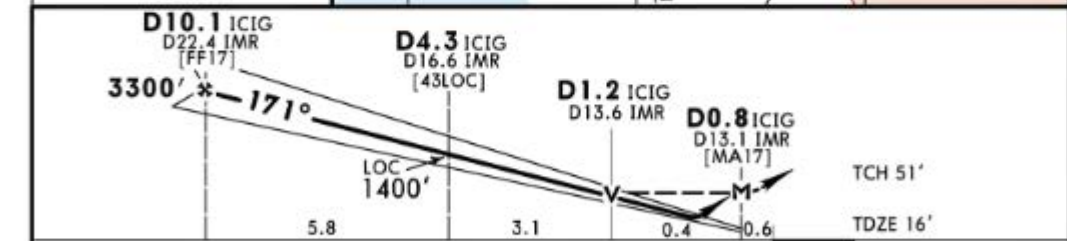
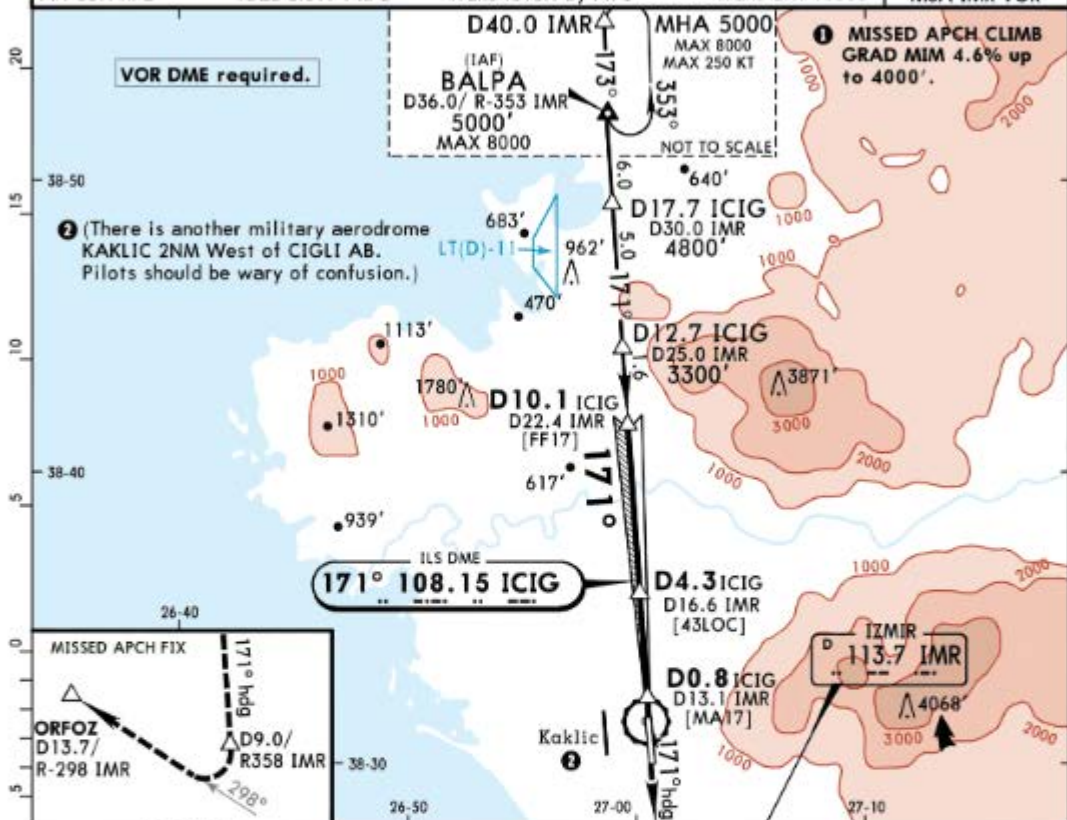
MENDERES Approach/Radar (APP)				CIGLI Rapcon (APP)		CIGLI Tower	
119.450 120.1 120.175 134.2				122.1		122.1	
LOC ICIG 108.15	Final Apch Crs 171°	GS D10.0 ICIG 3300' (3284')	ILS DA(H) 216' (200')	Apt Elev 16'		TDZE 16'	
<p>MISSED APCH: Climb on 171° hdg to D2.0 CIG TAC, then climbing turn RIGHT (MAX 300 KT) proceed D19.0/R-333 CIG TAC, reach 6000' or above and contact Approach. Minimum bank angle 20°.</p>							
Alt Set: hPa		TDZE Elev: 1 hPa		Trans level: By ATC		Trans alt: 10000'	
MSA CIG TAC							



Gnd speed-Kts	70	90	100	120	140	160	HIALS PAPI PAPI D2.0 CIG TAC on 171° hdg	
ILS GS	3.00°	372	478	531	637	743		849
LOC Descent Angle	3.07°	380	489	543	652	760		869

Military				STRAIGHT-IN LANDING RWY 17		CIRCLE-TO-LAND	
MISSED apch climb gradient mim 4.11% up to 6000'				LOC (GS out) CDFA		Not authorized East of runway	
DA(H) 216' (200')		MDA(H) 400' (384')		Max Kts		MDA(H) VIS	
FULL		ALS out		ALS out		1600m	
A					100	590' (574') 1600m	
B			800m		135	610' (594') 2000m	
C	800m		1200m		180	730' (714') 4800m	
D			1200m		205	870' (854') 4800m	

MENDERES Approach/Radar (APP)				CIGLI Rapcon (APP)		CIGLI Tower	
119.450		120.1		120.175		134.2	
122.1		122.1		122.1		122.1	
LOC ICIG 108.15	Final Apch Crs 171°	GS D10.0 ICIG 3300' (3284')	ILS DA(H) 216' (200')	Apt Elev 16'		TDZE 16'	
<p>MISSED APCH: Climb on 171° hdg to D9.0/R-358 IMR, then climbing turn RIGHT (MAX 265 KT) proceed ORFOZ climbing to 4000' and contact Approach. Minimum bank angle 20°.</p>							
Alt Set: hPa		TDZE Elev: 1 hPa		Trans level: By ATC		Trans alt: 10000'	
							MSA IMR VOR



Gnd speed-Kts	70	90	100	120	140	160		
ILS GS	3.00°	372	478	531	637	743		849
LOC Descent Angle	3.07°	380	489	543	652	760		869
MAP at D0.8 ICIG / D13.1 IMR								

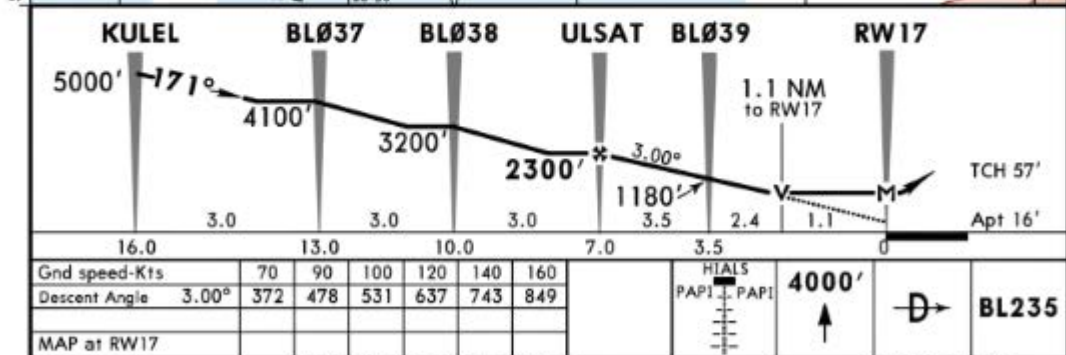
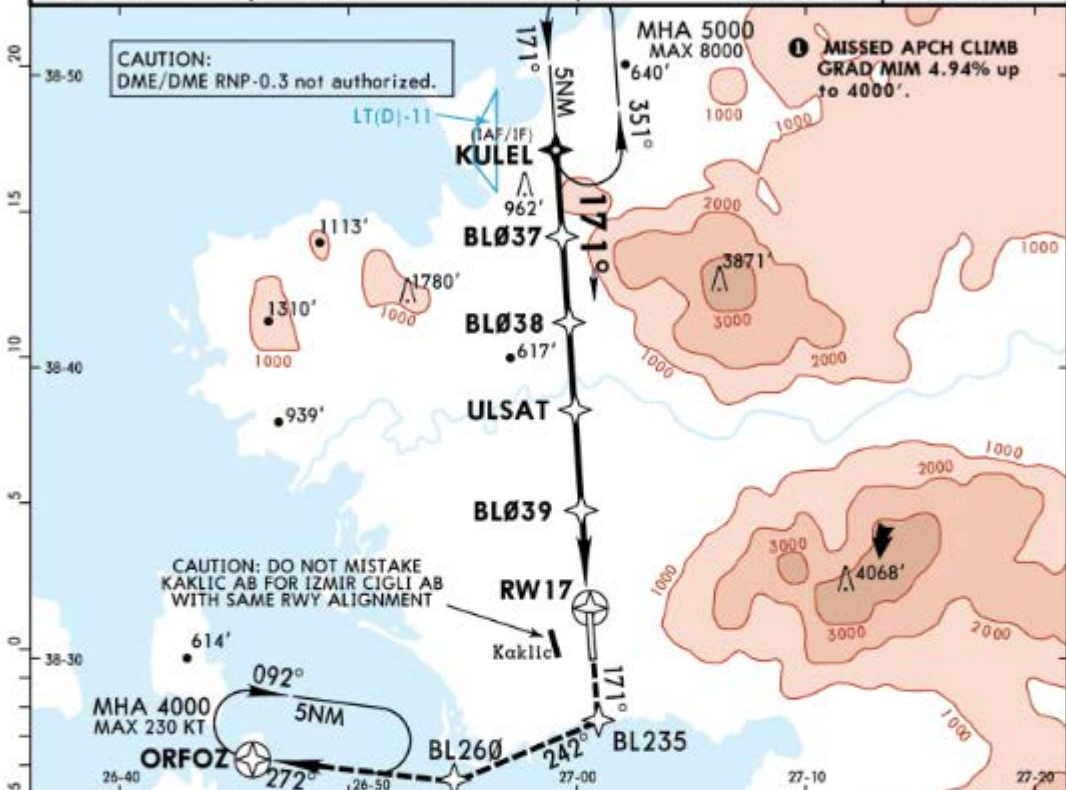
Military				STRAIGHT-IN LANDING RWY 17		CIRCLE-TO-LAND	
				Missed apch climb gradient min 4.6% up to 4000'		Not authorized East of runway	
ILS				LOC (GS out)		CDFA	
DA(H) 216' (200')		MDA(H) 400' (384')					
FULL		ALS out		ALS out		Max Kts	
A				800m	1600m	100	590' (574') 1600m
B						135	610' (594') 2000m
C	800m	1200m		1200m		180	730' (714') 4800m
D					2000m	205	870' (854') 4800m

LTBL/IGL
CICLI AB

JEPPESEN
27 JAN 17
Eff 2 Feb (12-1)

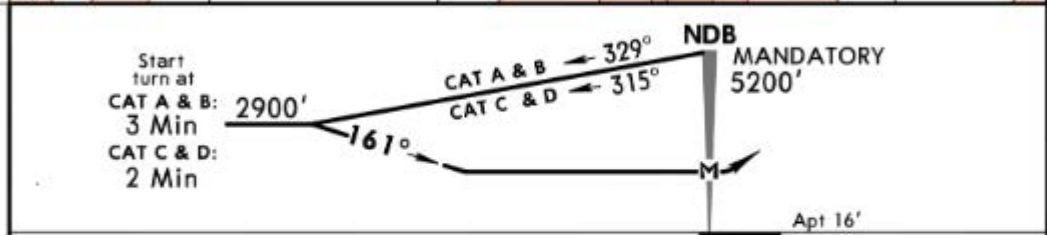
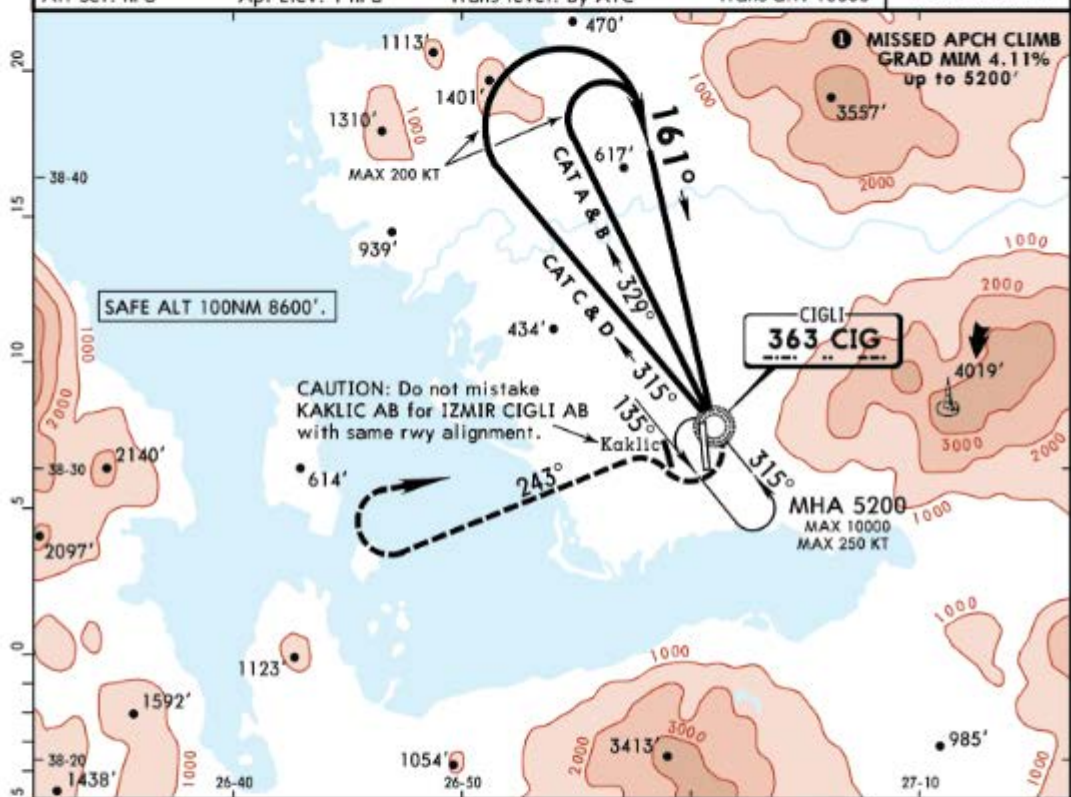
IZMIR, TURKEY
ORNAV (GNSS) Rwy 17

MENDERES Approach/Radar (APP) 119.450 120.1 120.175 134.2				CIGLI Rapcon (APP) 122.1	CIGLI Tower 122.1		
RNAV	Final Apch Crs 171°	Minimum Alt ULSAT 2300' (2284')	LNAV MDA(H) 400' (384')	Apt Elev 16'			
MISSED APCH: Climb to 4000' direct BL235, turn RIGHT to BL260 then turn RIGHT to ORFOZ and hold.					6000'		
Alt Set: hPa				Apt Elev: 1 hPa	Trans level: By ATC	Trans alt: 10000'	MSA RW17



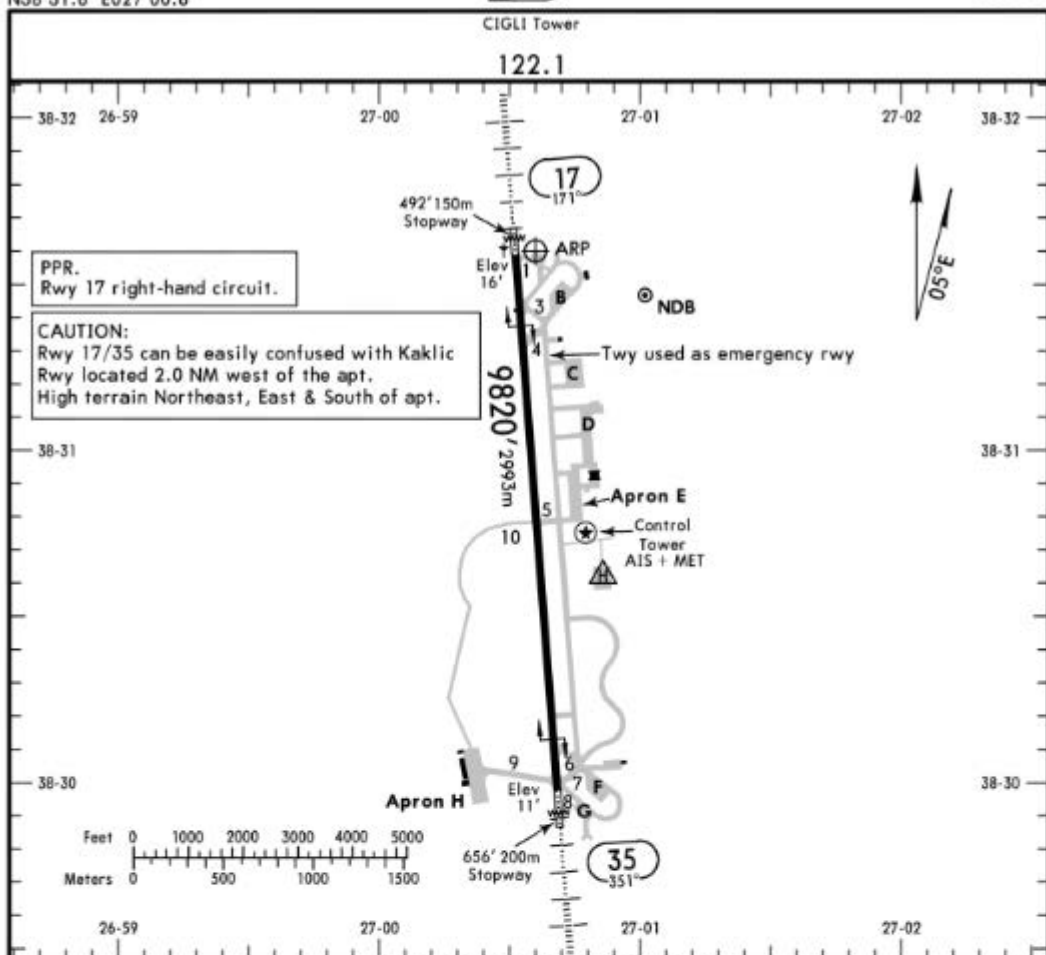
PANS-OPS	Military				STRAIGHT-IN LANDING RWY 17			CIRCLE-TO-LAND		
					LNAV			Not authorized East of runway		
					Missed apch climb gradient mim 4.94% up to 4000'					
					MDA(H) 400' (384')					
					ALS out	Max Kts	MDA(H)	VIS		
A					100	590' (574')	1600m			
B	800m				135	610' (594')	2000m			
C					180	730' (714')	4800m			
D	1200m				205	870' (854')	4800m			

MENDERES Approach/Radar (APP) 119.450 120.1 120.175 134.2				CIGLI Rapcon (APP) 122.1		CIGLI Tower 122.1	
NDB CIG 363		Final ApcH Crs 161°		Minimum Alt No FAF		MDA(H) Refer to Minimums	
				Apt Elev 16'			
MISSED APCH: Climbing turn RIGHT to intercept and follow 243° outbound NDB climbing to 3000' , then turn RIGHT and return to NDB climbing to 5200' or above and join holding.							
Alt Set: hPa		Apt Elev: 1 hPa		Trans level: By ATC		Trans alt: 10000'	



MAP at NDB		Lighting - Refer to Airport Chart	3000' to 243° from CIG 363
------------	--	-----------------------------------	---

Military		CIRCLE-TO-LAND CAUTION: Not authorized East of runway Missed apch climb grad mim 4.11% up to 5200'	
	Max Kts	MDA(H)	VIS
A	100	1570' (1554')	2000m
B	135	1570' (1554')	2400m
C	180	1640' (1624')	4800m
D	205		



RWY	ADDITIONAL RUNWAY INFORMATION				USABLE LENGTHS		TAKE-OFF	WIDTH
	HIRL (60m)	HIALS	SFL	PAPI (angle 3.0°)	RVR	Threshold		
17	HIRL (60m)	HIALS	SFL	PAPI (angle 3.0°)	RVR		8787' 2678m	148'
35	HIRL (60m)	HIALS	SFL	PAPI (angle 2.7°)	RVR			45m

Standard			TAKE-OFF
----------	--	--	----------

Low Visibility Take-off		
Day: RL & RCLM Night: RL	Day: RL or RCLM Night: RL	Adequate vis ref (Day only)
A		
B		
C	RVR 300m	400m
D		500m

