

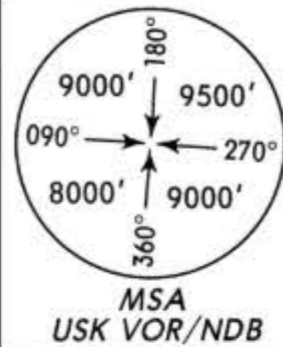
LTBO/USQ  
USAK

JEPPESEN  
11 NOV 11  
10-2  
EFF 17 Nov

USAK, TURKEY  
STAR

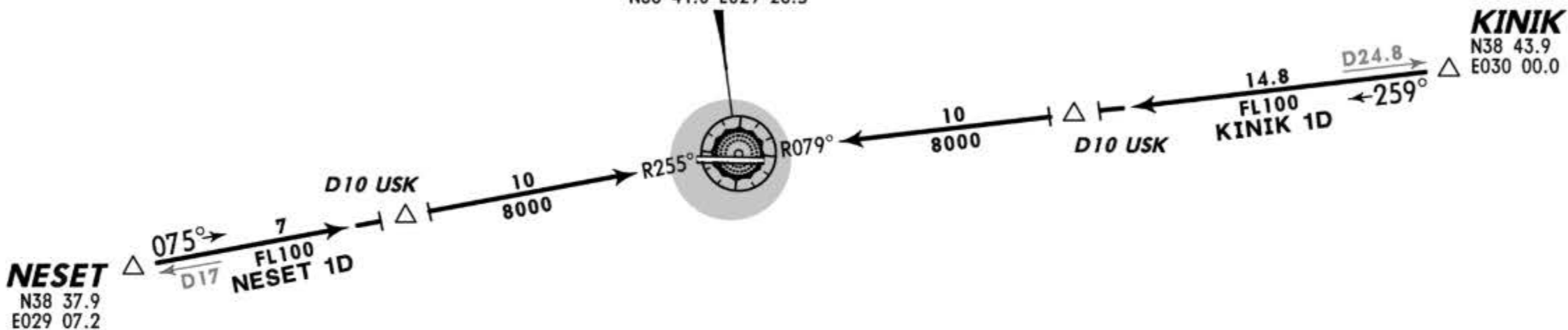
Apt Elev  
2898'

Alt Set: hPa Trans level: By ATC Trans alt: 10000'



KINIK 1D [KINI1D], NESET 1D [NESE1D]  
RWYS 09, 27 ARRIVALS  
BASED ON USK

USAK  
D (H) 108.0 USK  
N38 41.0 E029 28.5  
414 USK  
N38 41.0 E029 28.5



CHANGES: NDB added.

© JEPPESEN, 2006, 2011. ALL RIGHTS RESERVED.

LTBO/USQ  
USAK

JEPPesen  
22 DEC 17  
Eff 4 Jan (13-1)

USAK, TURKEY  
VOR DME or NDB DME Rwy 27

\*USAK Approach

\*USAK Tower

121.425 121.7 122.35

121.425 121.7 122.35

VOR  
USK  
**108.0**

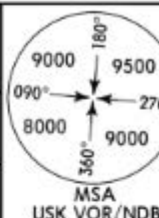
NDB  
USK  
**414**

Final  
Apch Crs  
**271°**

Minimum Alt  
D10.0  
**6000'** (3133')

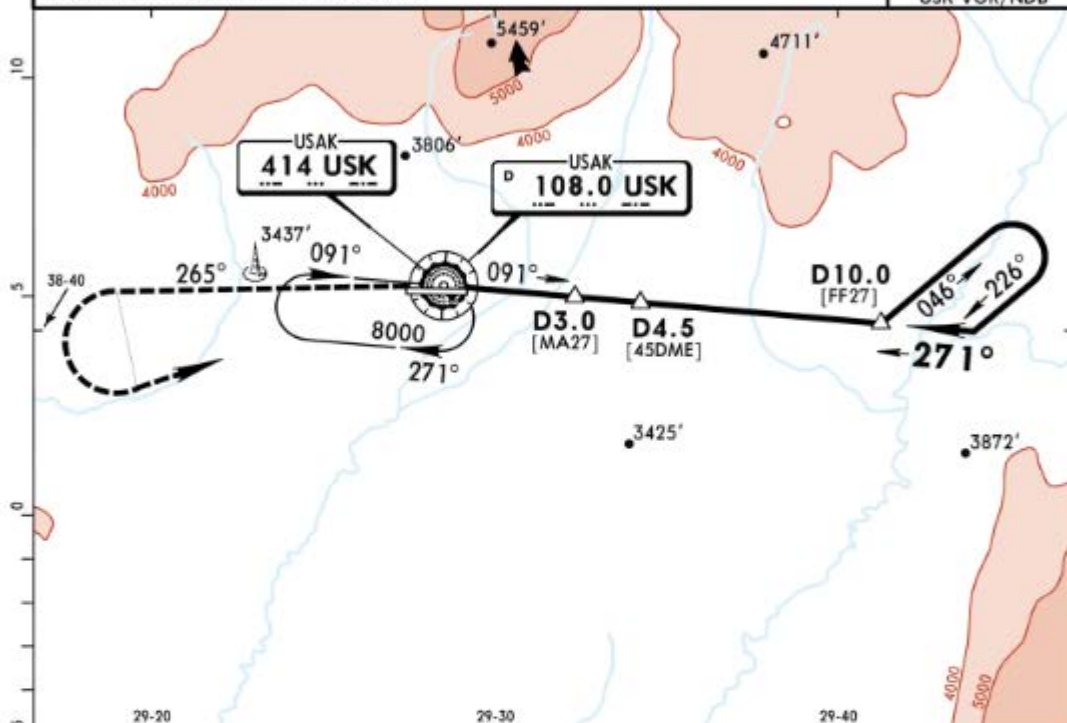
DA/MDA(H)  
**3700'** (833')

Apt Elev 2898'  
Rwy 2867'

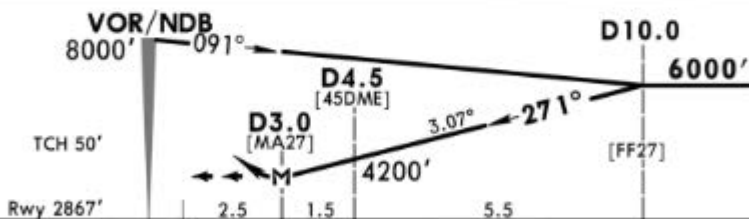


**MISSED APCH:** Climb on R-265 (265° from NDB) to 6000', then turn LEFT to VOR/NDB climbing to 8000' and hold.

Alt Set: hPa Rwy Elev: 101 hPa Trans level: By ATC Trans alt: 10000'  
Procedure turn restricted to MAX 185 KT.



USK DME	4.0	5.0	6.0	7.0	8.0	9.0
ALTITUDE	4060'	4390'	4710'	5040'	5370'	5690'



Gnd speed-Kts	70	90	100	120	140	160	HIALS REIL PAPI 6000' USK 265° on 108.0 or LT R-265 from 414 USK
Descent Angle	3.07°	380	489	543	652	760	
MAP at D3.0							

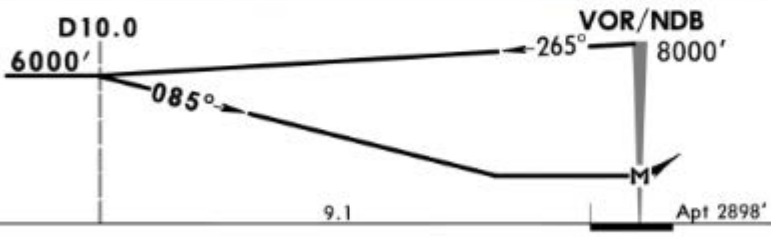
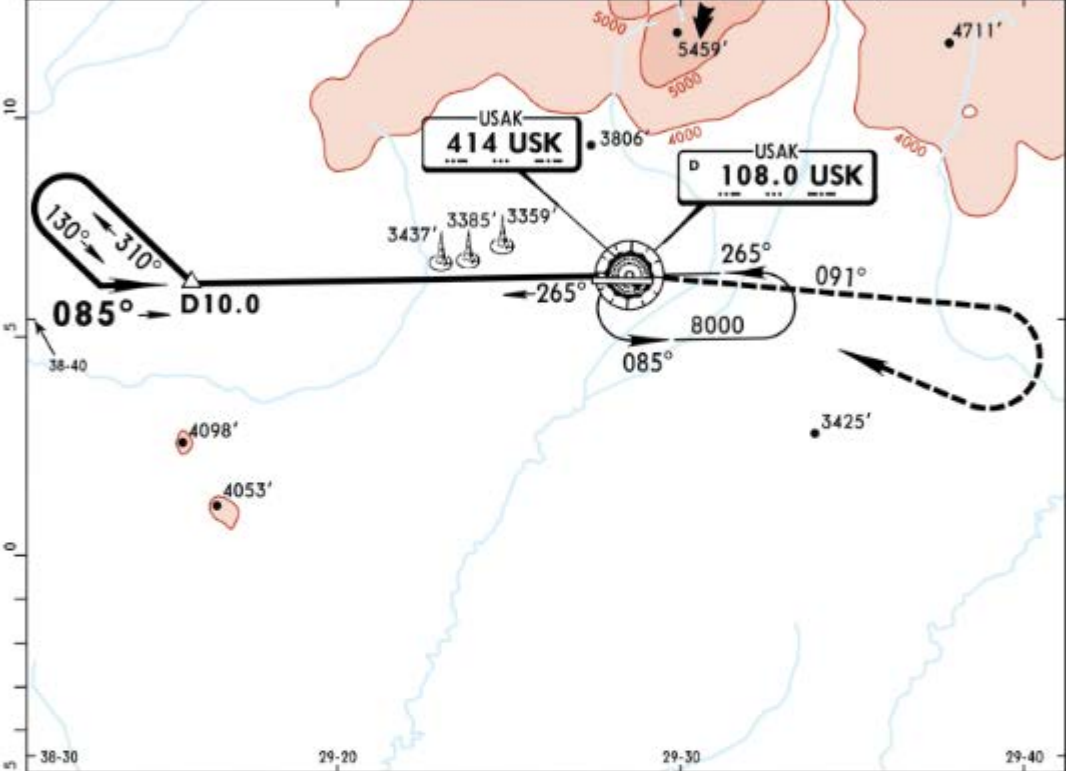
PANS OPS	<b>Standard</b> STRAIGHT-IN LANDING RWY 27			CIRCLE-TO-LAND		
	CDFA			CAUTION: Not authorized North of airport		
	DA/MDA(H) <b>3700'</b> (833')			Max Kts _____ MDA(H) _____ VIS _____		
	ALS out			100	4600' (1702')	1500m
	A	RVR 1500m		135	4600' (1702')	1600m
B	RVR 2400m		180	4600' (1702')	2400m	
C			205	4600' (1702')	3600m	
D						

LTBO/USQ  
USAK

JEPPESEN  
22 DEC 17 13-2 Eff 4 Jan

USAK, TURKEY  
VOR DME or NDB DME

*USAK Approach				*USAK Tower			
121.425		121.7		122.35		121.425 121.7 122.35	
VOR USK <b>108.0</b>	NDB USK <b>414</b>	Final Apch Crs <b>085°</b>	Minimum Alt <b>D10.0</b> 6000' (3102')	MDA(H) <b>4600'</b> (1702')	Apt Elev 2898'		
<b>MISSED APCH:</b> Climb on R-091 (091° from NDB) to 6000', then turn RIGHT to VOR/NDB climbing to 8000' and hold.							
Alt Set: hPa		Apt Elev: 102 hPa		Trans level: By ATC		Trans alt: 10000'	
Procedure turn restricted to MAX 185 KT.							



MAP at VOR/NDB	Lighting - Refer to Airport Chart	6000'	USK	091°
Standard		RT	R-091	from USK 414

CIRCLE-TO-LAND

CAUTION:  
Not authorized North of airport

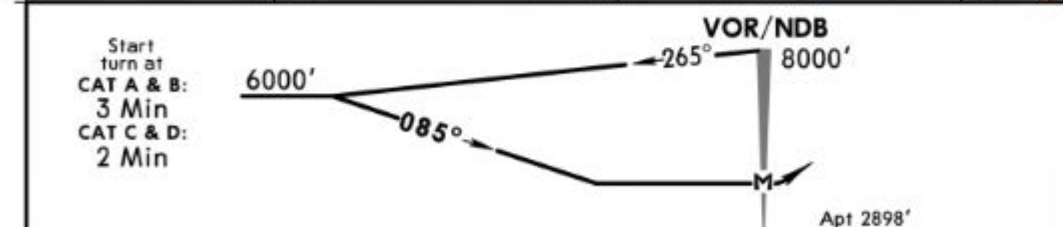
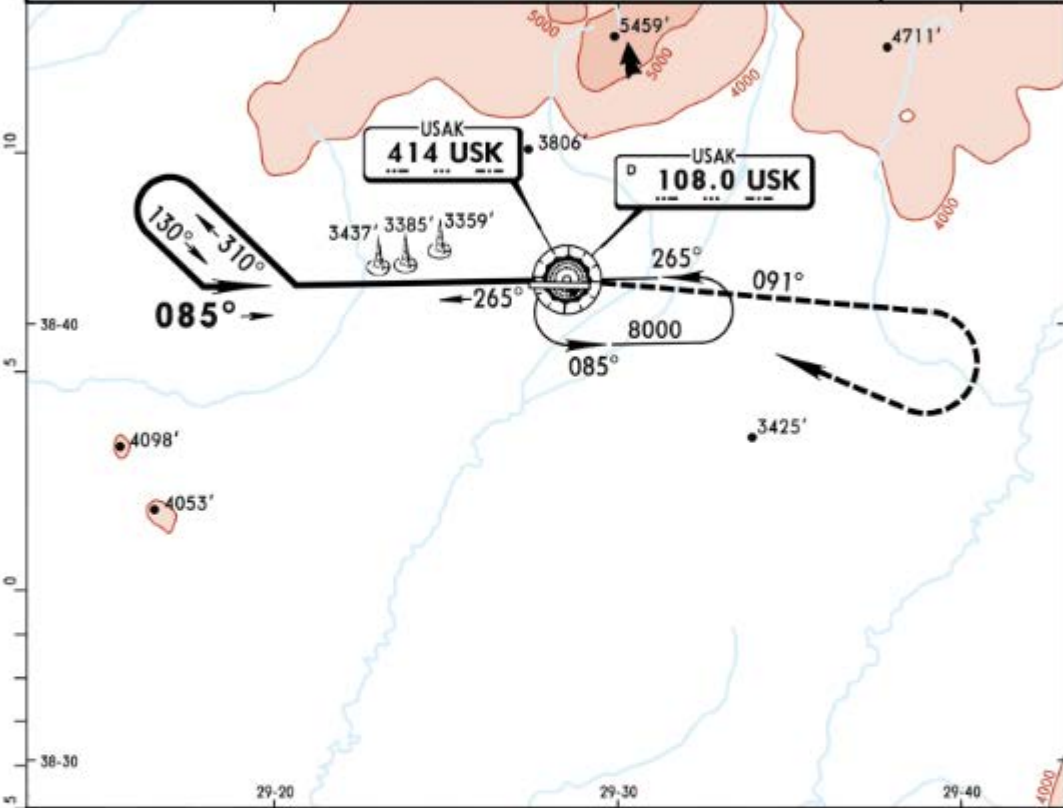
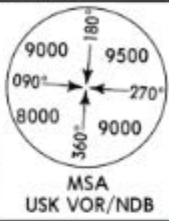
PANS OPS	Max Kts	MDA(H)	VIS
	A 100	4600' (1702')	1500m
B 135	4600' (1702')	1600m	
C 180	4600' (1702')	2400m	
D 205	4600' (1702')	3600m	

LTBO/USQ  
USAK

JEPPESEN  
22 DEC 17 **13-3** Eff 4 Jan

USAK, TURKEY  
VOR or NDB 1

*USAK Approach				*USAK Tower			
121.425		121.7	122.35		121.425		121.7 122.35
VOR USK	NDB USK	Final Apch Crs	Minimum Alt No FAF		MDA(H)	Apt Elev	2898'
<b>108.0</b>	<b>414</b>	<b>085°</b>			<b>4600'</b> (1702')		
<p>MISSED APCH: Climb on R-091 (091° from NDB) to 6000', then turn RIGHT to VOR/NDB climbing to 8000' and hold.</p>							
Alt Set: hPa		Apt Elev: 102 hPa	Trans level: By ATC		Trans alt: 10000'		
Procedure turn restricted to MAX 185 KT.							



MAP at VOR/NDB					Lighting - Refer to Airport Chart	6000' USK on 108.0 or 091° from USK	RT	R-091	414
----------------	--	--	--	--	-----------------------------------	-------------------------------------	----	-------	-----

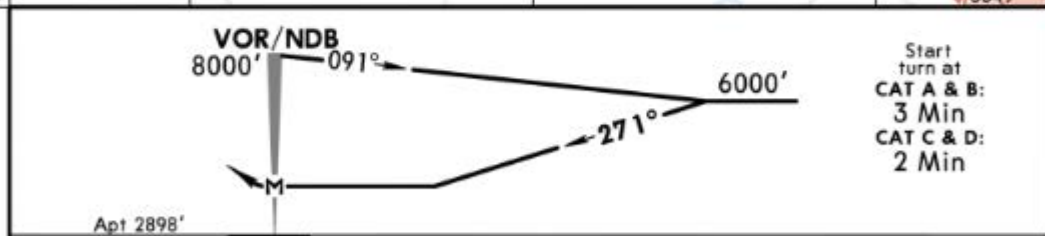
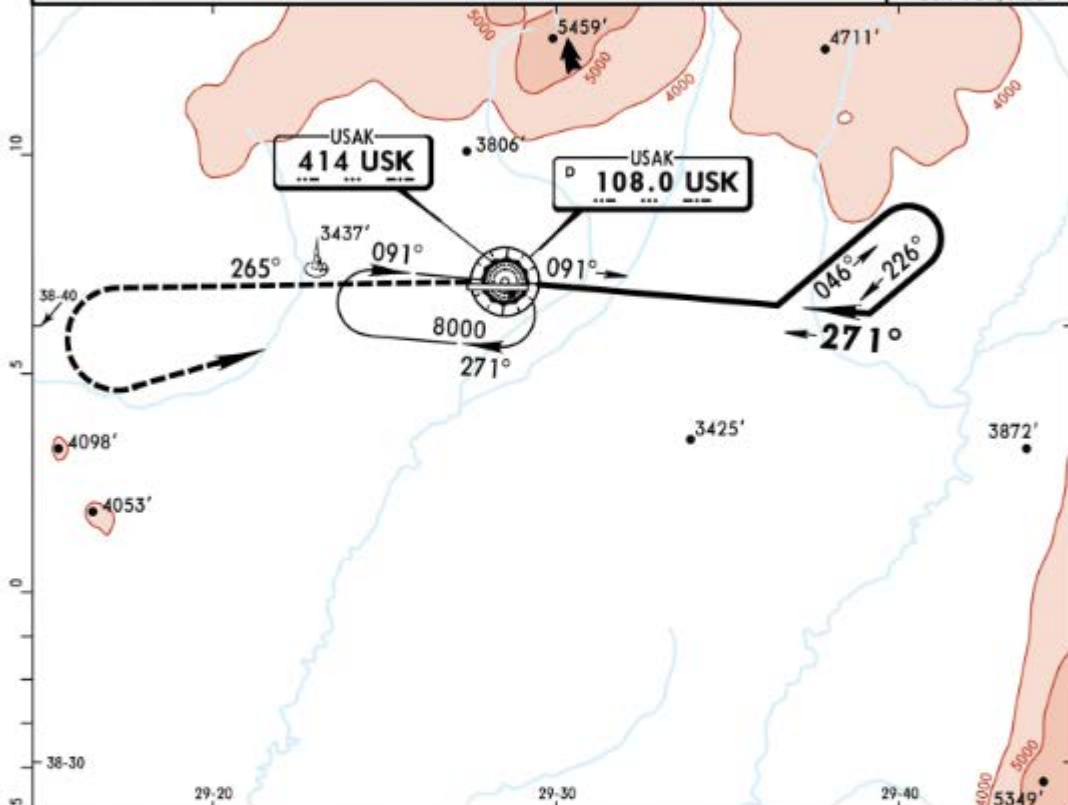
<b>Standard</b>			<b>CIRCLE-TO-LAND</b>		
<b>CAUTION:</b> Not authorized North of airport					
	Max Kts	MDA(H)	VIS		
A	100	4600' (1702')	1500m		
B	135	4600' (1702')	1600m		
C	180	4600' (1702')	2400m		
D	205	4600' (1702')	3600m		

LTBO/USQ  
USAK

JEPPESEN  
22 DEC 17 (13-4) Eff 4 Jan

USAK, TURKEY  
VOR or NDB 2

*USAK Approach				*USAK Tower		
121.425		121.7	122.35		121.425 121.7 122.35	
VOR USK	NDB USK	Final Apch Crs	Minimum Alt No FAF	MDA(H)	Apt Elev	2898'
108.0	414	271°		4600' (1702')		
<p><b>MISSED APCH:</b> Climb on R-265 (265° from NDB) to 6000', then turn LEFT to VOR/NDB climbing to 8000' and hold.</p>						
<p>Alt Set: hPa    Apt Elev: 102 hPa    Trans level: By ATC    Trans alt: 10000'</p> <p>Procedure turn restricted to MAX 185 KT.</p>						



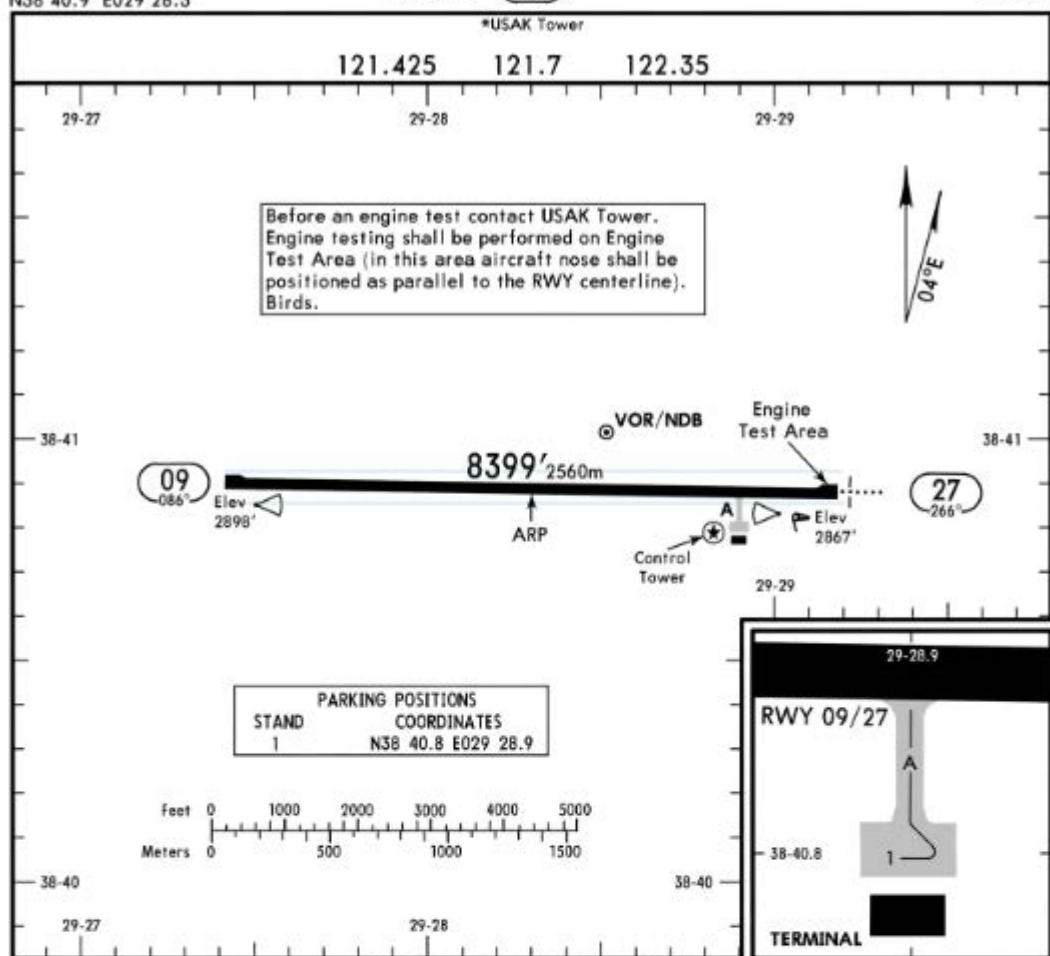
MAP at VOR/NDB				Lighting - Refer to Airport Chart	6000' on 108.0 R-265 or 265° from USK 414
Standard					

CIRCLE-TO-LAND  
CAUTION:  
Not authorized North of airport

PANS OPS	Max Kts	MDA(H)	VIS
	A 100	4600' (1702')	1500m
	B 135	4600' (1702')	1600m
	C 180	4600' (1702')	2400m
	D 205	4600' (1702')	3600m

CHANGES: Minimums.

© JEPPESEN, 2006, 2017. ALL RIGHTS RESERVED.



ADDITIONAL RUNWAY INFORMATION

RWY					USABLE LENGTHS		TAKE-OFF	WIDTH
					Threshold	Glide Slope		
09	HIRL(60m)	REIL	PAPI-L (angle 3.0°)	RVR			<b>1</b>	148' 45m
27	HIRL(60m)	HIALS	REIL	PAPI-L (angle 3.0°)	RVR			

**1 TAKE-OFF RUN AVAILABLE**

RWY 27:

From rwy head            8399' (2560m)  
TWY A int                7054' (2150m)

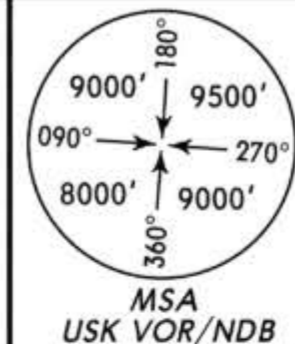
**Standard**

TAKE-OFF

	Low Visibility Take-off		
	Day: RL & RCLM Night: RL	Day: RL or RCLM Night: RL	Adequate vis ref (Day only)
A			
B			
C	RVR 300m	400m	500m
D			

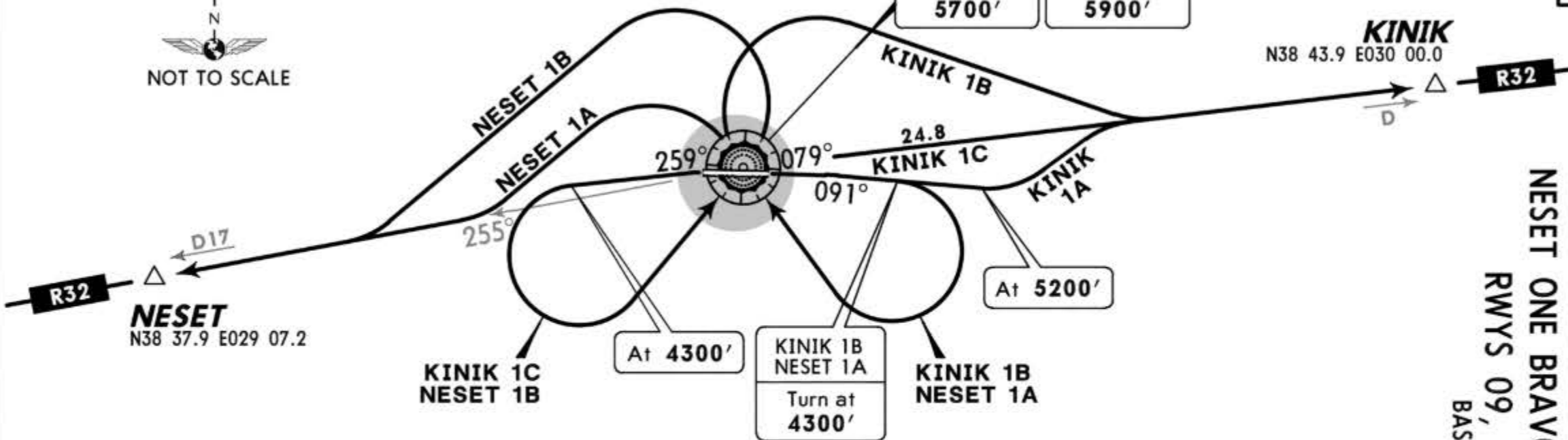
Apt Elev  
2898'

Trans level: By ATC Trans alt: 10000'



USAK  
D (H) 108.0 USK  
N38 41.0 E029 28.5  
414 USK  
N38 41.0 E029 28.5

KINIK 1B NESET 1A At or above 5700'	KINIK 1C NESET 1B At or above 5900'
--	--



KINIK ONE ALFA (KINIK 1A)[KIN11A]  
KINIK ONE BRAVO (KINIK 1B)[KIN11B]  
KINIK ONE CHARLIE (KINIK 1C)[KIN11C]  
NESET ONE ALFA (NESET 1A)[NESE1A]  
NESET ONE BRAVO (NESET 1B)[NESE1B]  
RWYS 09, 27 DEPARTURES  
BASED ON USK

These SIDs require minimum climb gradients of

**KINIK 1A**

316' per NM (5.2%) until passing 3500', then 298' per NM (4.9%).

**KINIK 1B, NESET 1A**

316' per NM (5.2%) until passing 3500', then 243' per NM (4%) until passing USK.

**KINIK 1C, NESET 1B**

261' per NM (4.3%) until passing USK.

Gnd speed-KT	75	100	150	200	250	300
316' per NM	395	527	790	1053	1317	1580
298' per NM	372	496	744	922	1241	1489
261' per NM	327	435	653	871	1089	1306
243' per NM	304	405	608	810	1013	1215

SID	RWY	ROUTING
KINIK 1A	09	Climb on USK R-091 (091° bearing) to 5200', turn LEFT climbing to 10000', intercept USK R-079 (079° bearing) to KINIK, join airway R-32.
KINIK 1B		Climb on USK R-091 (091° bearing) to 4300', turn RIGHT to USK, turn RIGHT climbing to 10000', intercept USK R-079 (079° bearing) to KINIK, join airway R-32.
KINIK 1C	27	Climb on USK R-259 (259° bearing) to 4300', turn LEFT to USK, climbing to 10000' intercept USK R-079 (079° bearing) to KINIK, join airway R-32.
NESET 1A	09	Climb on USK R-091 (091° bearing) to 4300', turn RIGHT to USK, turn LEFT climbing to 10000', intercept USK R-255 (255° bearing) to NESET, join airway R-32.
NESET 1B	27	Climb on USK R-259 (259° bearing) to 4300', turn LEFT to USK, turn LEFT climbing to 10000', intercept USK R-255 (255° bearing) to NESET, join airway R-32.