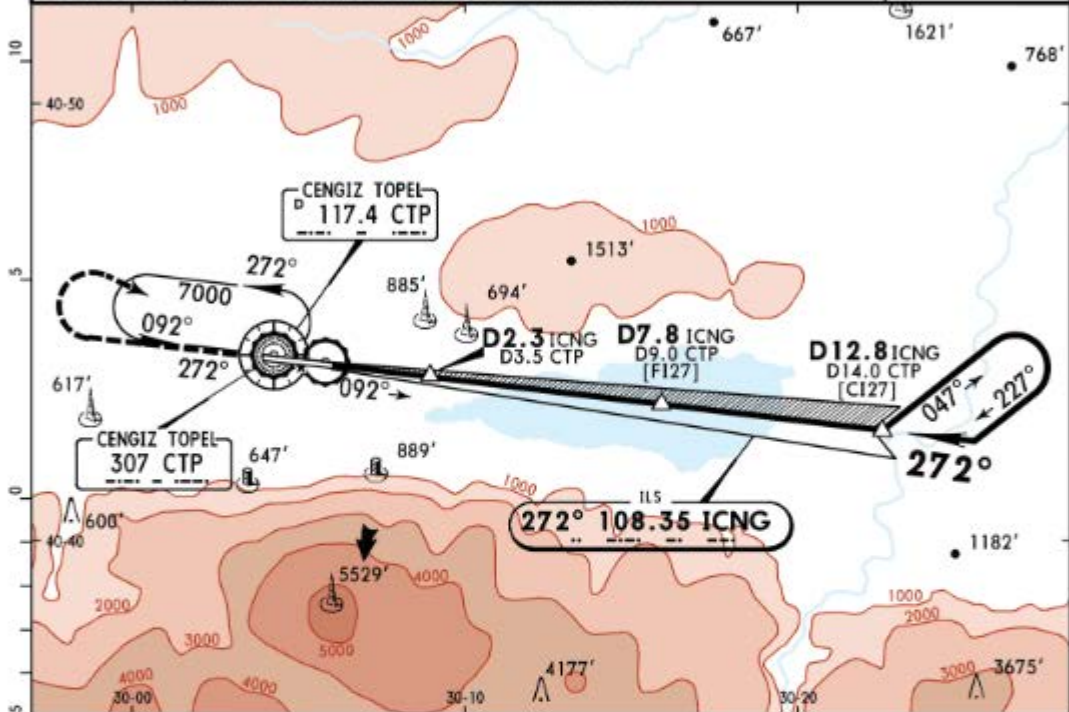
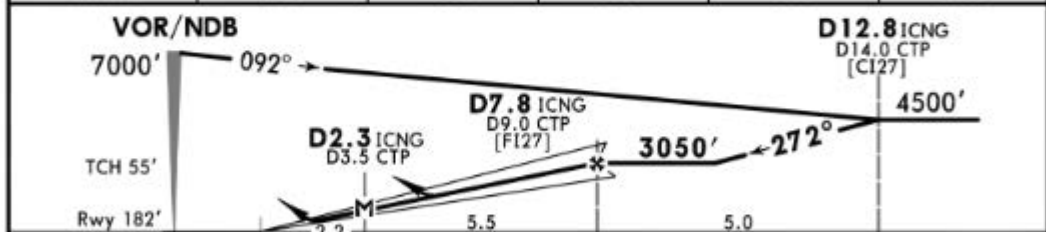


*TOPEL Approach			*TOPEL Tower		
119.5	120.3	122.1	119.05	122.1	
LOC ICNG 108.35	Final Aph Crs 272°	GS No alt published	ILS DA(H) Refer to Minimums	Apt Elev 188' Rwy 182'	
MISSED APCH: Climb STRAIGHT AHEAD until passing 2350', then turn RIGHT climbing 7000' to VOR and hold. If unable to reach VOR at 7000', proceed via R-092 to 5600', then turn LEFT climbing to 7000' to VOR and hold. MAX 185 KT.					
Alt Set: hPa		Rwy Elev: 7 hPa	Trans level: By ATC		Trans Alt: 12000'
1. VOR DME required. 2. Procedure turn restricted to MAX 210 KT.					



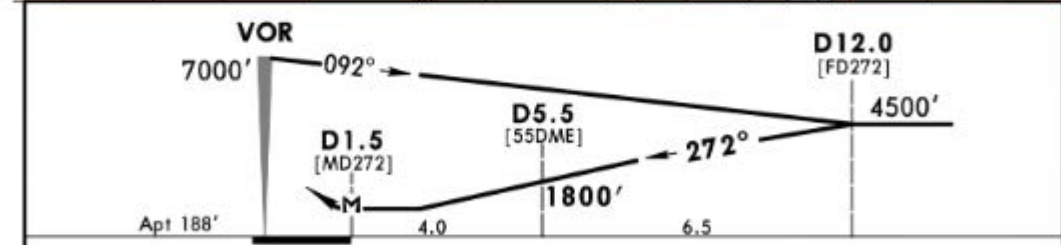
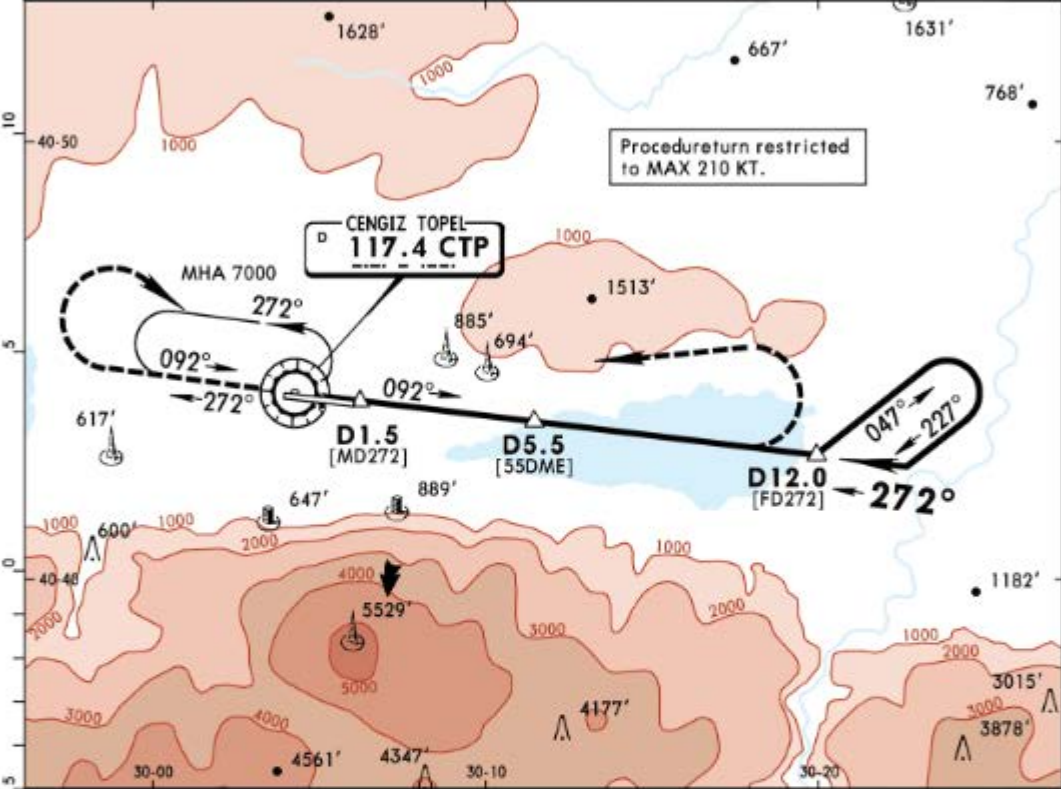
ICNG DME	3.0	4.0	5.0	6.0	7.0
ALTITUDE	1280'	1650'	2020'	2390'	2760'



Gnd speed-Kts	70	90	100	120	140	160		MAX	2350'	
ILS GS or LOC Descent Angle	3.50°	434	557	619	743	867		991	185 KT	↑
MAP at D2.3 ICNG/D3.5 CTP										

Standard				STRAIGHT-IN LANDING RWY 27				CIRCLE-TO-LAND			
Missed apch climb grad mim 3.5%		Missed apch climb grad mim 2.5%		LOC (GS out) CDFA				CAUTION: Not authorized South of airport			
DA(H) 500' (318')		DA(H) 900' (718')		DA/MDA(H) 990' (808')							
FULL		ALS out		FULL		ALS out		Max Kts		MDA(H) VIS	
A	RVR 800m	RVR 1400m	RVR 1500m		RVR 1500m		100	1300' (1112')		1500m	
B			RVR 1500m		RVR 1500m		135	1300' (1112')		1600m	
C			RVR 2400m		RVR 2400m		180	1800' (1612')		2400m	
D			RVR 2400m		RVR 2400m		205	1800' (1612')		3600m	

*TOPEL Approach			*TOPEL Tower		
119.5	120.3	122.1	119.05 122.1		
VOR CTP 117.4	Final Apch Crs 272°	Minimum Alt D5.5 1800' (1612')	MDA(H) Refer to Minimums	Apt Elev 188'	
<p>MISSED APCH: Climb on R-272 to 2200', then turn RIGHT to cross VOR at 3100' or above, then intercept R-092. After passing 5100' turn LEFT, climb to 7000', proceed to VOR and hold. MAX 185 KT.</p>					
Alt Set: hPa	Apt Elev: 7 hPa	Trans level: By ATC	Trans Alt: 12000'		MSA CTP VOR

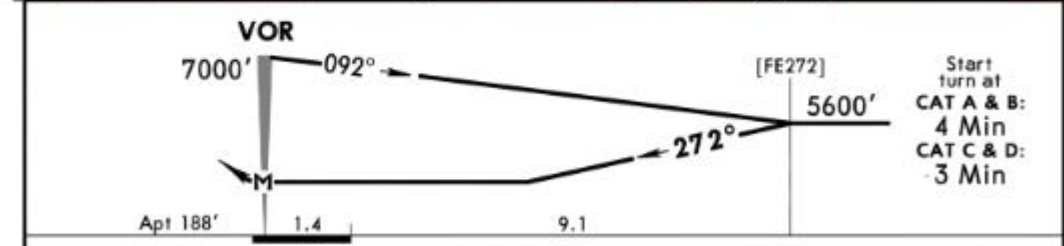
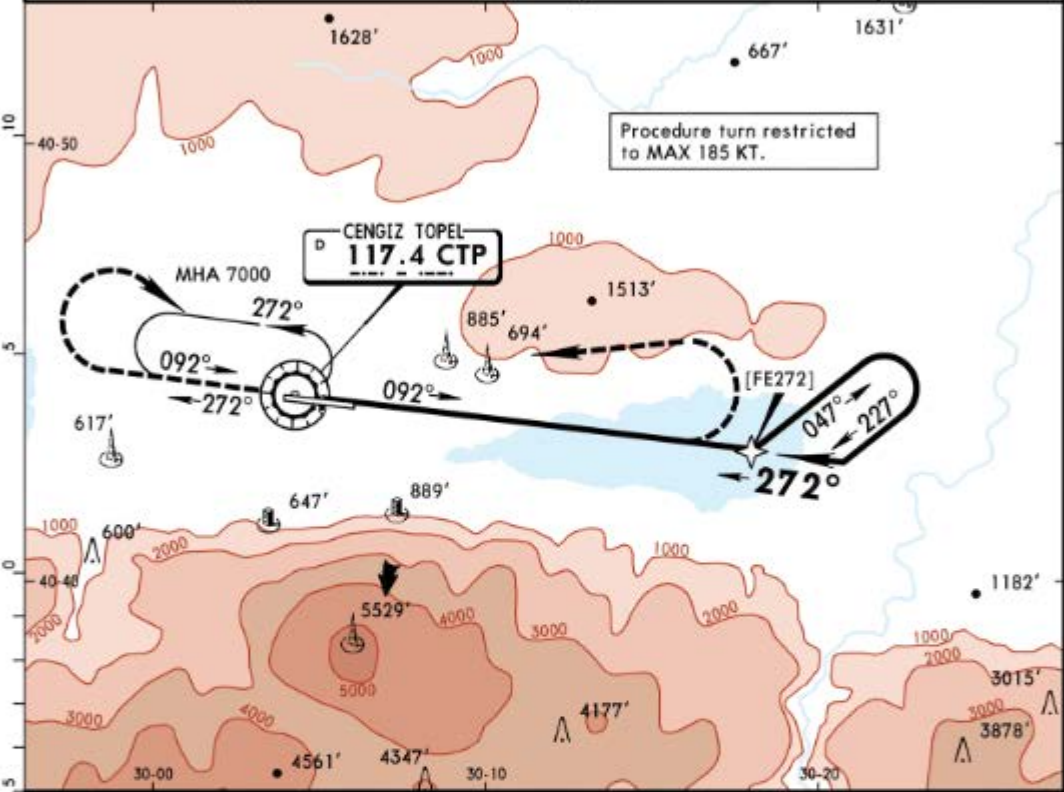


MAP at D1.5	Lighting - Refer to Airport Chart	MAX 185 KT	2200'	CTP on 117.4 R-272
-------------	-----------------------------------	------------	-------	--------------------

Standard CIRCLE-TO-LAND
CAUTION:
Not authorized South of airport

	Max Kts	MDA(H)	VIS
A	100	1300' (1112')	1500m
B	135	1300' (1112')	1600m
C	180	1800' (1612')	2400m
D	205	1800' (1612')	3600m

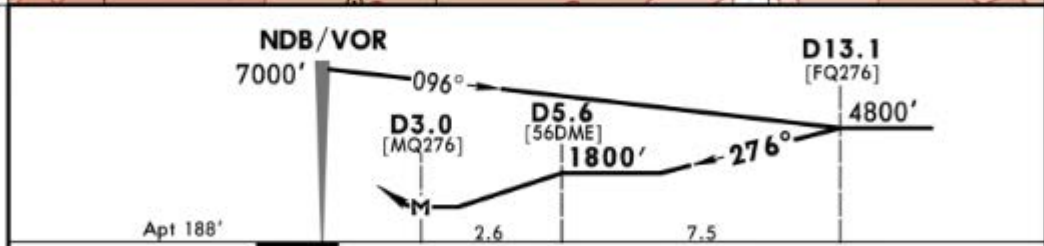
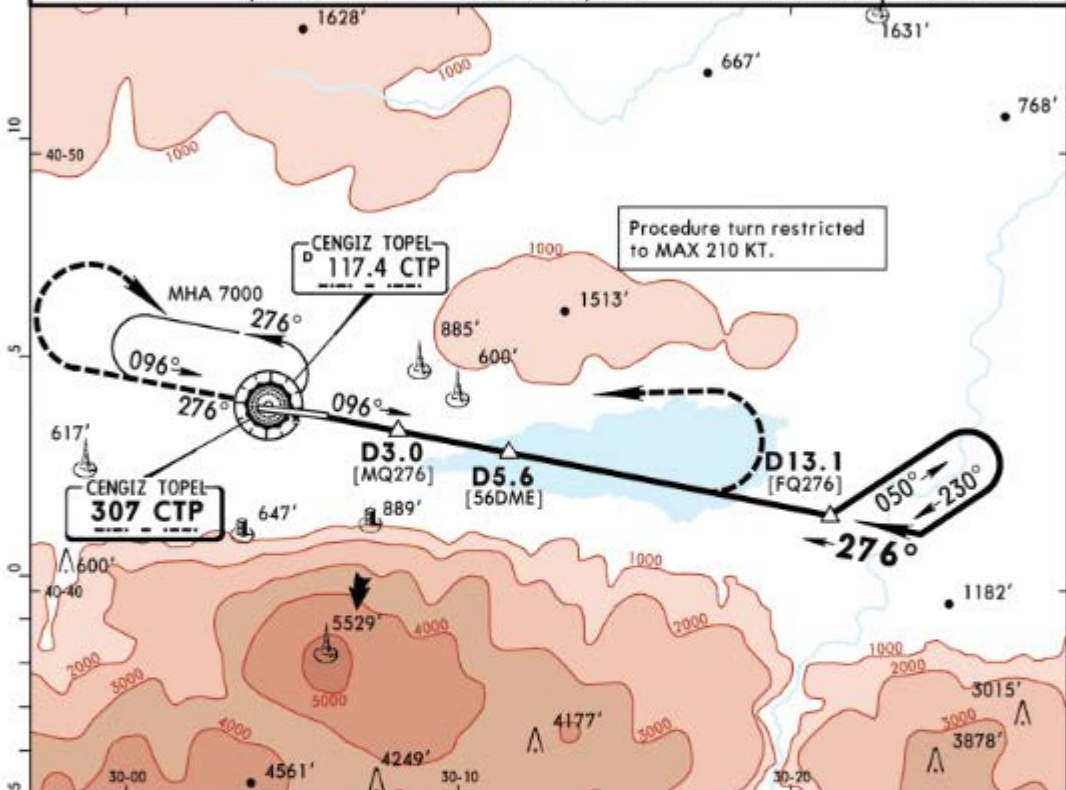
*TOPEL Approach			*TOPEL Tower	
119.5	120.3	122.1	119.05	122.1
VOR CTP 117.4	Final Apch Crs 272°	No FAF	MDA(H) 1800' (1612')	Apt Elev 188'
<p>MISSED APCH: Climb on R-272 to 2600', then turn RIGHT to cross VOR at 3500' or above, then intercept R-092. After passing 5300' turn LEFT, climb to 7000', proceed to VOR and hold. MAX 185 KT.</p>				
Alt Set: hPa	Apt Elev: 7 hPa	Trans level: By ATC	Trans Alt: 12000'	MSA CTP VOR



MAP at VOR Standard	CIRCLE-TO-LAND CAUTION: Not authorized South of airport	Lighting - Refer to Airport Chart	MAX 185 KT	2600' CTP on 117.4 R-272
-------------------------------	---	-----------------------------------	------------	--------------------------

	Max Kts	MDA(H)	VIS
A	100	1800' (1612')	1500m
B	135	1800' (1612')	1600m
C	180	1800' (1612')	2400m
D	205	1800' (1612')	3600m

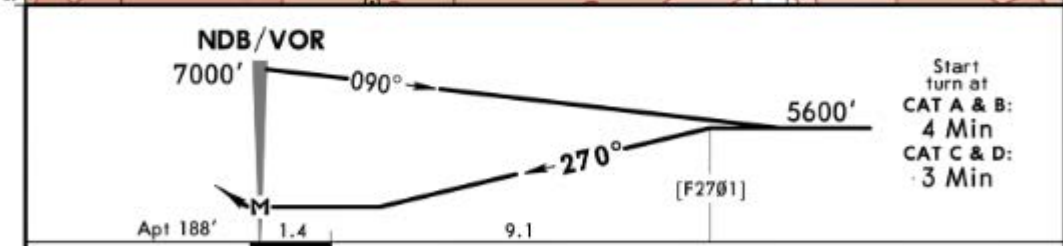
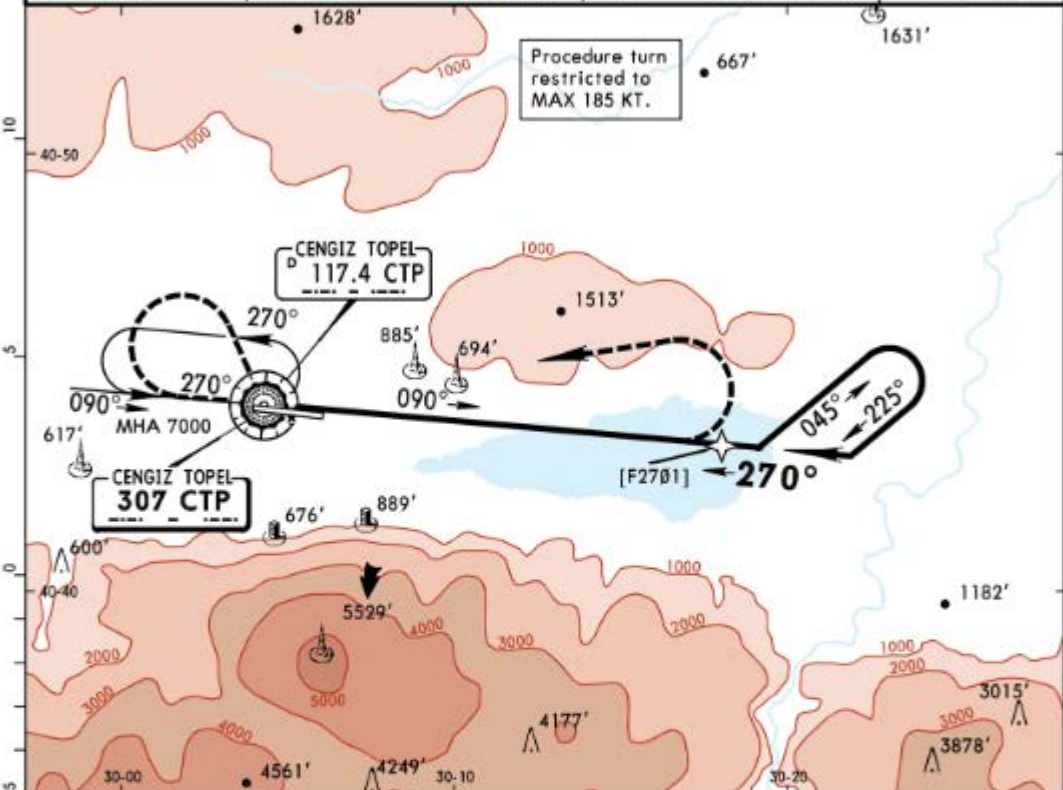
*TOPEL Approach				*TOPEL Tower	
119.5	120.3	122.1	119.05 122.1		
NDB CTP 307	Final Apch Crs 276°	Minimum Alt D5.6 1800' (1612')	MDA(H) Refer to Minimums	Apt Elev 188'	
MISSED APCH: Climb on 276° to 1900', then turn RIGHT to cross NDB at 2900' or above and intercept 096°. After passing 4700' turn LEFT climbing to NDB at 7000' and hold. MAX 185 KT.					
Alt Set: hPa	Apt Elev: 7 hPa	Trans level: By ATC	Trans Alt: 12000'	MSA CTP NDB	



MAP at D3.0				Lighting - Refer to Airport Chart	1900' on 276°
Standard	CIRCLE-TO-LAND CAUTION: Not authorized South of airport				

PANS OPS	Max Kts	MDA(H)		VIS
A	100	1300' (1112')		1500m
B	135	1300' (1112')		1600m
C	180	1800' (1612')		2400m
D	205	1800' (1612')		3600m

*TOPEL Approach			*TOPEL Tower		
119.5	120.3	122.1	119.05 122.1		
NDB CTP 307	Final Apch Crs 270°	No FAF	MDA(H) 1800' (1612')	Apt Elev 188'	
MISSED APCH: Climb on 270° to 2600', then turn RIGHT to cross NDB at 3500' or above and intercept 090°. After passing 5300' turn LEFT climbing to NDB at 7000' and hold.					
Alt Set: hPa	Apt Elev: 7 hPa	Trans level: By ATC	Trans Alt: 12000'	MSA CTP NDB	



MAP at NDB/VOR	Lighting - Refer to Airport Chart	2600' on 270°
----------------	-----------------------------------	---------------

Standard CIRCLE-TO-LAND
CAUTION:
Not authorized South of airport

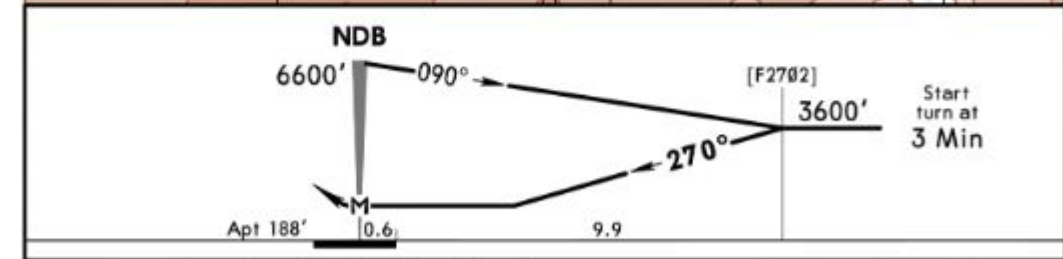
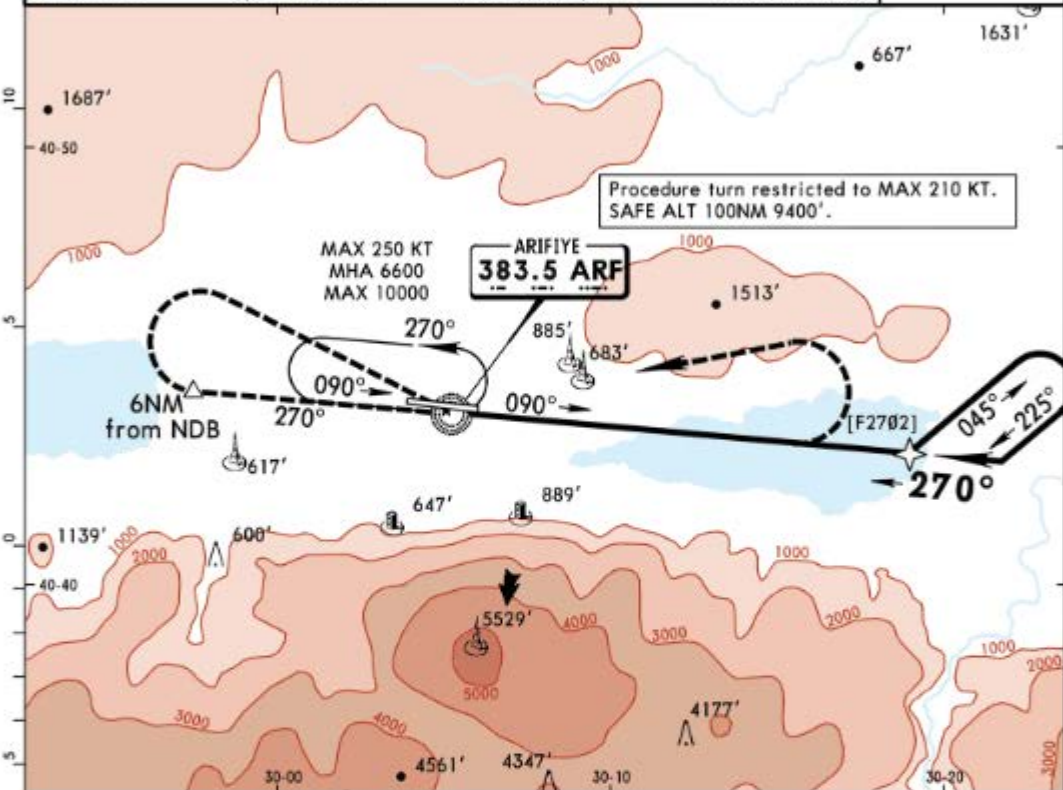
	Max Kts	MDA(H)	VIS
A	100	1800' (1612')	1500m
B	135	1800' (1612')	1600m
C	180	1800' (1612')	2400m
D	205	1800' (1612')	3600m

LTBQ/KCO
CENGIZ TOPEL

JEPPESEN
24 MAY 19 **16-3**

KOCAELI, TURKEY
MISSED APCH CLIMB
GRAD MIM 3.13%
via ARF **NDB-2**

*TOPEL Approach				*TOPEL Tower	
119.5	120.3	122.1		119.05	122.1
NDB ARF 383.5	Final Apch Crs 270°	No FAF	MDA(H) Refer to Minimums	Apt Elev 188'	
MISSED APCH: Climb on 270°. At 6 NM from NDB turn RIGHT to cross NDB at 4000' or above and intercept 090° from NDB. After passing 5500' turn LEFT climbing to NDB at 6600' and hold.					
Alt Set: hPa	Apt Elev: 7 hPa	Trans level: By ATC	Trans Alt: 12000'		



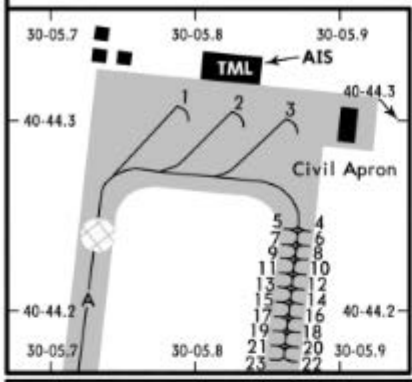
				Lighting - Refer to Airport Chart	4000' on 270°
--	--	--	--	-----------------------------------	---------------

MAP at NDB		Military		STRAIGHT-IN LANDING		CIRCLE-TO-LAND		CAUTION:	
								Not authorized South of rwy 09/27	
								Missed apch climb gradient mim 3.13% up to 4000'.	
	Max Kts		MDA(H)		VIS				
A	100		1720' (1532')		5000m				
B	135		1720' (1532')		5000m				
C	180		1720' (1532')		5000m				
D	205		1820' (1632')		5000m				

PANS OPS MIM bank angle 30°. CHANGES: Transition altitude. © JEPPESEN, 2000, 2019. ALL RIGHTS RESERVED.

*TOPEL Tower

119.05 122.1



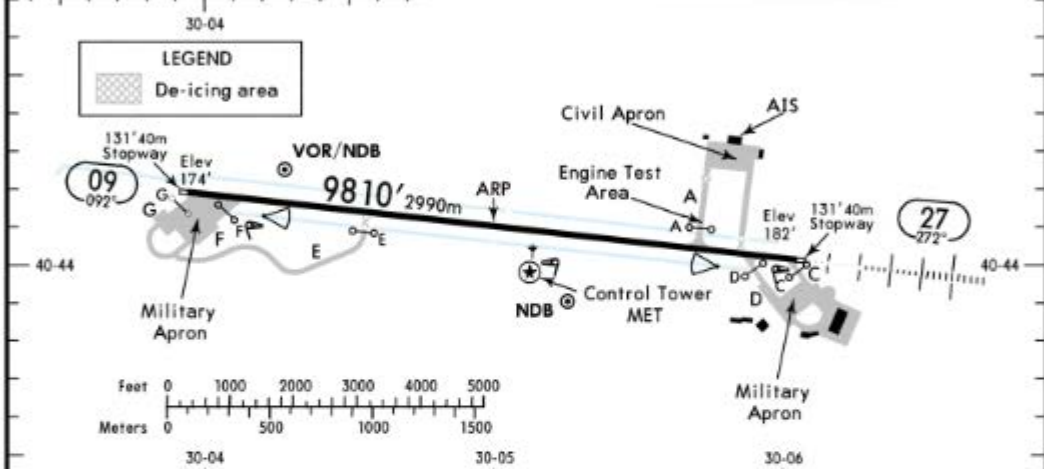
PARKING POSITIONS	
STAND	COORDINATES
1, 2	N40 44.3 E030 05.8
3	N40 44.3 E030 05.9
4 thru 21	N40 44.2 E030 05.9
22, 23	N40 44.1 E030 05.9

Birds.
All traffic landing on rwy 27 shall do back-track within rwy and proceed to Civil Apron via twy A.
Back-track within rwy shall be done by TWR clearance.



40-45

LEGEND	
	De-icing area



ADDITIONAL RUNWAY INFORMATION

RWY	USABLE LENGTHS		LANDING BEYOND	TAKE-OFF	WIDTH
	Threshold	Glide Slope			
09	HIRL (60m)	PAPI (angle 3.0°)	RVR		98'
27	HIRL (60m)	HIALS PAPI (angle 3.5°)	RVR	8717' 2657m	30m

1 TAKE-OFF RUN AVAILABLE

RWY 27:

From rwy head 9810' (2990m)
twy A int 8219' (2505m)

Standard

TAKE-OFF

	Low Visibility Take-off		
	Day: RL & RCLM Night: RL	Day: RL or RCLM Night: RL	Adequate vis ref (Day only)
A			
B			
C	RVR 300m	400m	500m
D			

