

LTBR/YEI
YENISEHIR

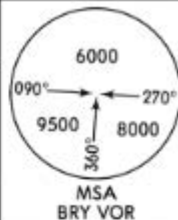
JEPPESEN
24 MAY 19 10-2

BURSA, TURKEY
STAR

ATIS
124.575

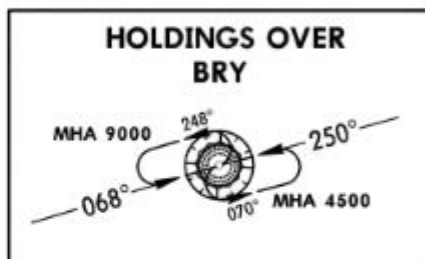
Apt Elev
763'

Alt Set: hPa
Trans level: By ATC Trans alt: 12000'



BKZ 1E [BKZ1E]
EKMEL 1E [EKME1E]
SULTA 1E [SULT1E]
YAA 1E [YAA1E]
ARRIVALS
(RWYS 07L, 25R)

BEYKOZ
D 117.3 BKZ
N41 07.6 E029 08.6



YALOVA
D 117.7 YAA
N40 28.5 E029 12.5

YENISEHIR
D 115.3 BRY
N40 15.8 E029 35.7
352 BRY
N40 15.8 E029 35.7

EKMEL
D
EKMEL 1E
9000
27.8
←250°

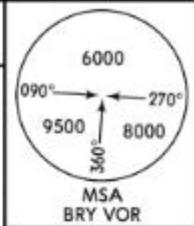


SULTA
D
SULTA 1E
9000
15
←329°

ATIS
124.575

Apt Elev
763'

Alt Set: hPa
Trans level: By ATC Trans alt: 12000'



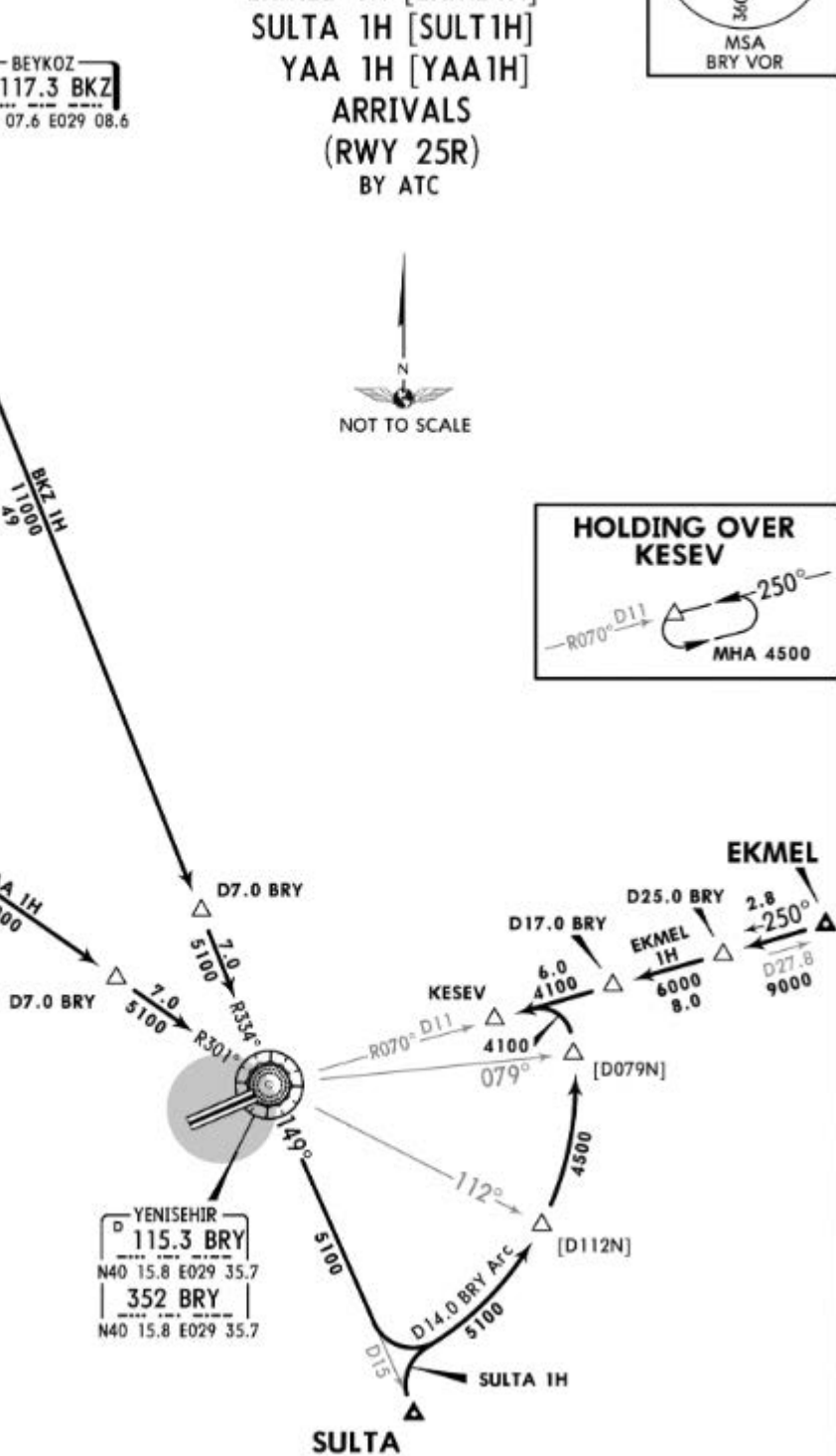
BKZ 1H [BKZ1H]
EKME1 1H [EKME1H]
SULTA 1H [SULT1H]
YAA 1H [YAA1H]

ARRIVALS
(RWY 25R)
BY ATC



BEYKOZ
D 117.3 BKZ
N41 07.6 E029 08.6

YALOVA
D 117.7 YAA
N40 28.5 E029 12.5

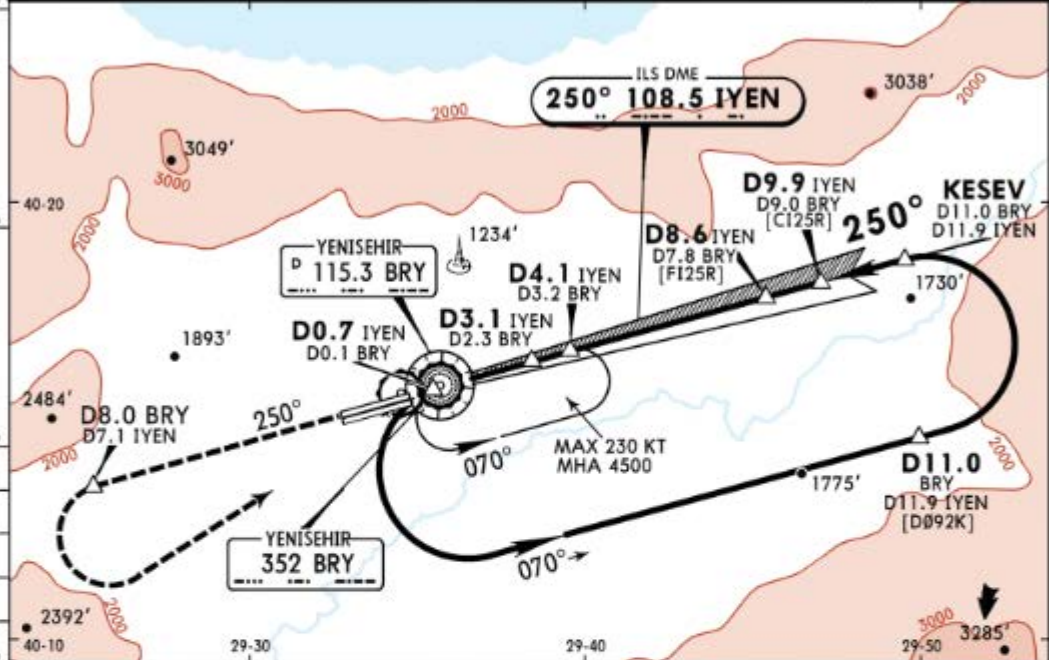


LTBR/YEI
YENISEHIR

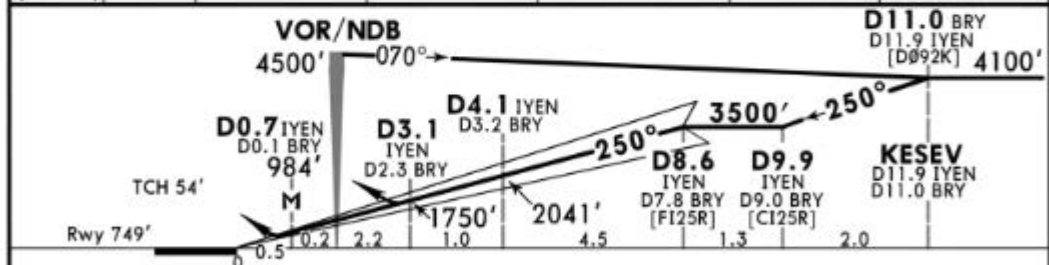
JEPPESEN
7 JUN 19 (11-1) Eff 20 Jun

BURSA, TURKEY
ILS DME 1 Rwy 25R

ATIS 124.575	YENISEHIR Approach 124.2 127.75		YENISEHIR Tower 124.2 127.75		Ground 121.7
LOC IYEN 108.5	Final Apch Crs 250°	GS D8.6 IYEN 3500' (2751')	ILS DA(H) Refer to Minimums	Apt Elev 763' Rwy 749'	
MISSED APCH: Climb on R-250 BRY. Cross 3000' within D8.0 BRY (D7.1 IYEN), then turn LEFT climbing to 4500' to VOR and hold.					
Alt Set: hPa		Rwy Elev: 27 hPa	Trans level: By ATC		Trans alt: 12000'
Racetrack restricted to MAX 185 KT.					



LOC (GS out)	IYEN DME	4.0	5.0	6.0	7.0	8.0
	ALTITUDE	2020'	2340'	2650'	2970'	3290'



Gnd speed-Kts	70	90	100	120	140	160	HIALS-11 REIL PAPI	3000'	BRY	D8.0
ILS GS or LOC Descent Angle	3.00°	372	478	531	637	743	849	↑	on 115.3	within
MAP at D0.7 IYEN/D0.1 BRY									R-250	BRY

Standard STRAIGHT-IN LANDING RWY 25R						CIRCLE-TO-LAND		
Missed apch climb gradient min 5.4% DA(H) 959' (210')			Missed apch climb gradient min 2.5% DA(H) 1659' (910')			LOC (GS out) CDFA DA/MDA(H) 1750' (1001')		
FULL	TDZ or CL out	ALS out	FULL/TDZ or CL out	ALS out	ALS out	Max Kts	MDA(H)	VIS
A			RVR 1500m		RVR 1500m	100	3000' (2237')	1500m
B						135	3000' (2237')	1600m
C	RVR 550m	RVR 550m	RVR 1200m			180	3000' (2237')	2400m
D			RVR 2400m		RVR 2400m	205	3000' (2237')	3600m

W/o HUD/AP/FD: RVR 750m.

CHANGES: None.

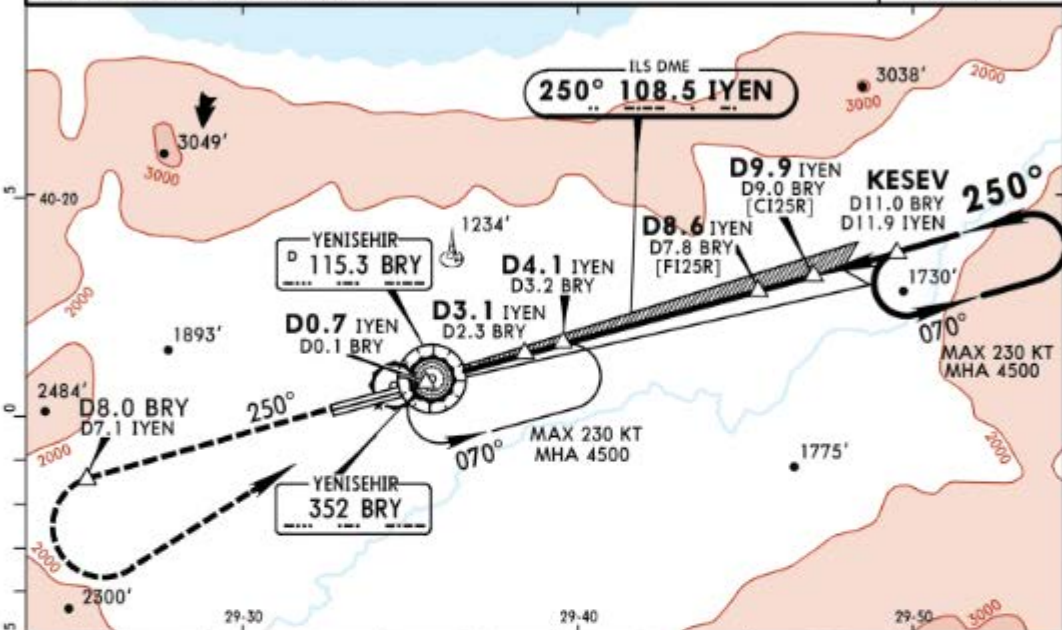
© JEPPESEN, 2014, 2018. ALL RIGHTS RESERVED.

LTBR/YEI
YENISEHIR

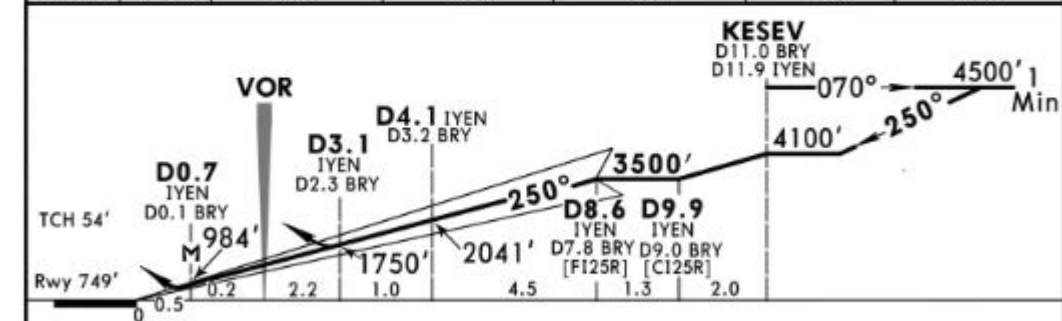
JEPPESEN
24 MAY 19 11-2

BURSA, TURKEY
ILS DME 2 Rwy 25R

ATIS 124.575		YENISEHIR Approach 124.2 127.75		YENISEHIR Tower 124.2 127.75		Ground 121.7
LOC IYEN 108.5	Final Apch Crs 250°	GS D8.6 IYEN 3500' (2751')	ILS DA(H) Refer to Minimums	Apt Elev 763' Rwy 749'		
MISSED APCH: Climb on R-250 BRY. Cross 3000' within D8.0 BRY (D7.1 IYEN), then turn LEFT climbing to 4500' to VOR and hold. Refer to minimums for missed apch climb gradients.						
Alt Set: hPa		Rwy Elev: 27 hPa	Trans level: By ATC		Trans alt: 12000'	
Race-track restricted to MAX 230 KT.						MSA BRY VOR/NDB



LOC	IYEN DME	4.0	5.0	6.0	7.0	8.0
(GS out)	ALTITUDE	2020'	2340'	2650'	2970'	3290'



Gnd speed-Kts	70	90	100	120	140	160	HIALS-II REIL PAPI PAPT 3000' on 115.3 within D8.0 BRY R-250	
ILS GS or LOC Descent Angle	3.00°	372	478	531	637	743		849
MAP at D0.7 IYEN/D0.1 BRY								

Standard STRAIGHT-IN LANDING RWY 25R				CIRCLE-TO-LAND			
Missed apch climb gradient mim 5.4%		Missed apch climb gradient mim 2.5%		LOC (GS out)		CDFA	
DA(H) 959' (210')		DA(H) 1659' (910')		1750' (1001')		DA/MDA(H)	
FULL	TDZ or CL out	ALS out	FULL/TDZ or CL out	ALS out	ALS out	Max Kts	MDA(H) VIS
A						100	3000' (2237') 1500m
B	RVR 550m	RVR 550m	RVR 1200m	RVR 1500m	RVR 1500m	135	3000' (2237') 1600m
C				RVR 2400m	RVR 2400m	180	3000' (2237') 2400m
D						205	3000' (2237') 3600m

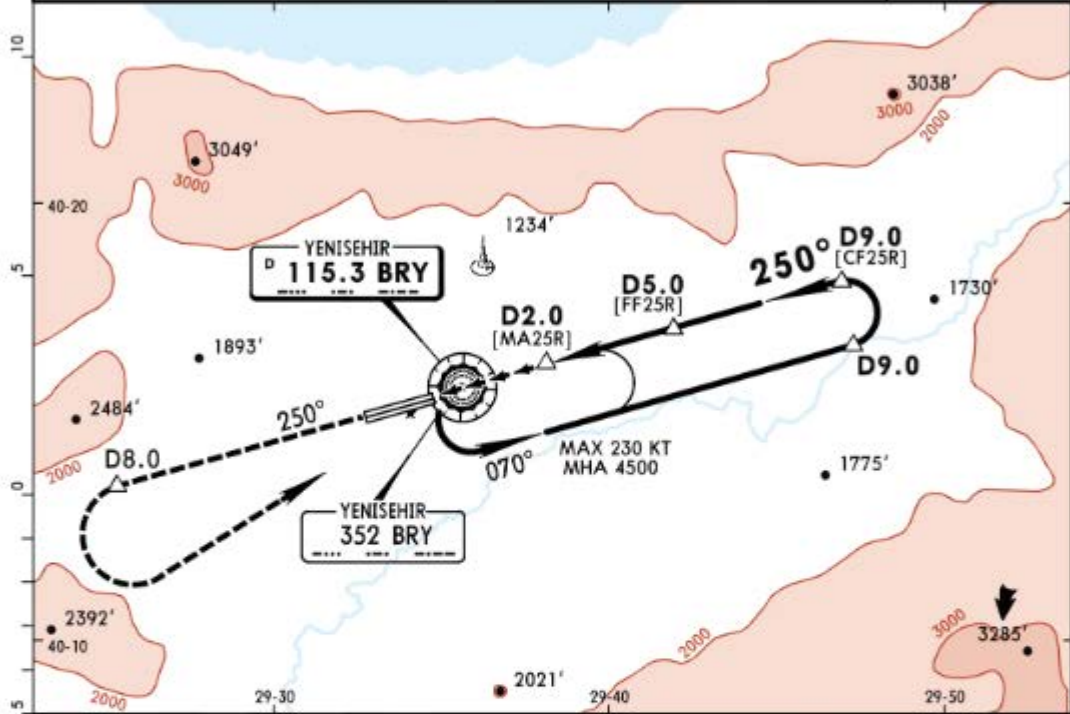
W/o HUD/AP/FD: RVR 750m.
CHANGES: Trans alt. © JEPPESEN, 2012, 2019. ALL RIGHTS RESERVED.

LTBR/YEI
YENISEHIR

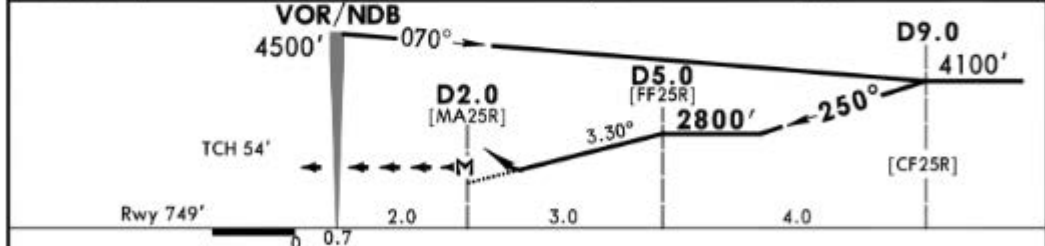
JEPPESEN
24 MAY 19 (13-1)

BURSA, TURKEY
NDB VOR DME Rwy 25R

ATIS 124.575		YENISEHIR Approach 124.2 127.75		YENISEHIR Tower 124.2 127.75		Ground 121.7
VOR BRY 115.3	Final Apch Crs 250°	Minimum Alt D5.0 2800' (2051')	DA/MDA(H) 1700' (951')	Apt Elev 763' Rwy 749'		<p>MSA BRY VOR</p>
<p>MISSED APCH: Climb on R-250. Cross 3250' within D8.0, then turn LEFT climbing to 4500' to VOR/NDB and hold.</p> <p>Alt Set: hPa Rwy Elev: 27 hPa Trans level: By ATC Trans alt: 12000'</p> <p>Racetrack restricted to MAX 185 KT.</p>						



DIST to MA25R	1.0	2.0
ALTITUDE	2100'	2450'



Gnd speed-Kts	70	90	100	120	140	160	
Descent Angle	3.30°	409	526	584	701	817	
MAP at D2.0							

PANS OPS	Standard STRAIGHT-IN LANDING RWY 25R			CIRCLE-TO-LAND		
	CDFA					
	DA/MDA(H): 1700' (951')			ALS out		
				Max Kts	MDA(H)	VIS
A			100	3000' (2237')	1500m	
B	RVR 1500m		135	3000' (2237')	1600m	
C			180	3000' (2237')	2400m	
D	RVR 2400m		205	3000' (2237')	3600m	

CHANGES: Trans alt.

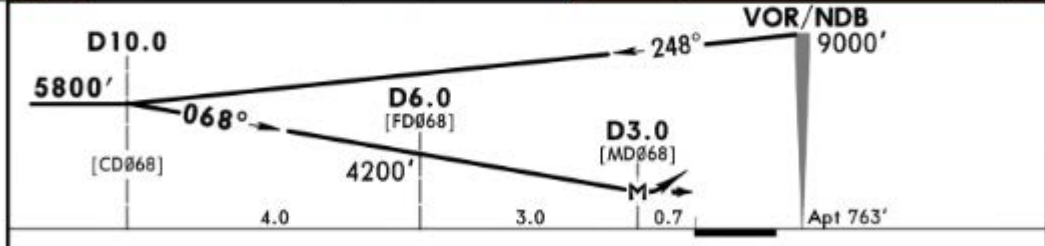
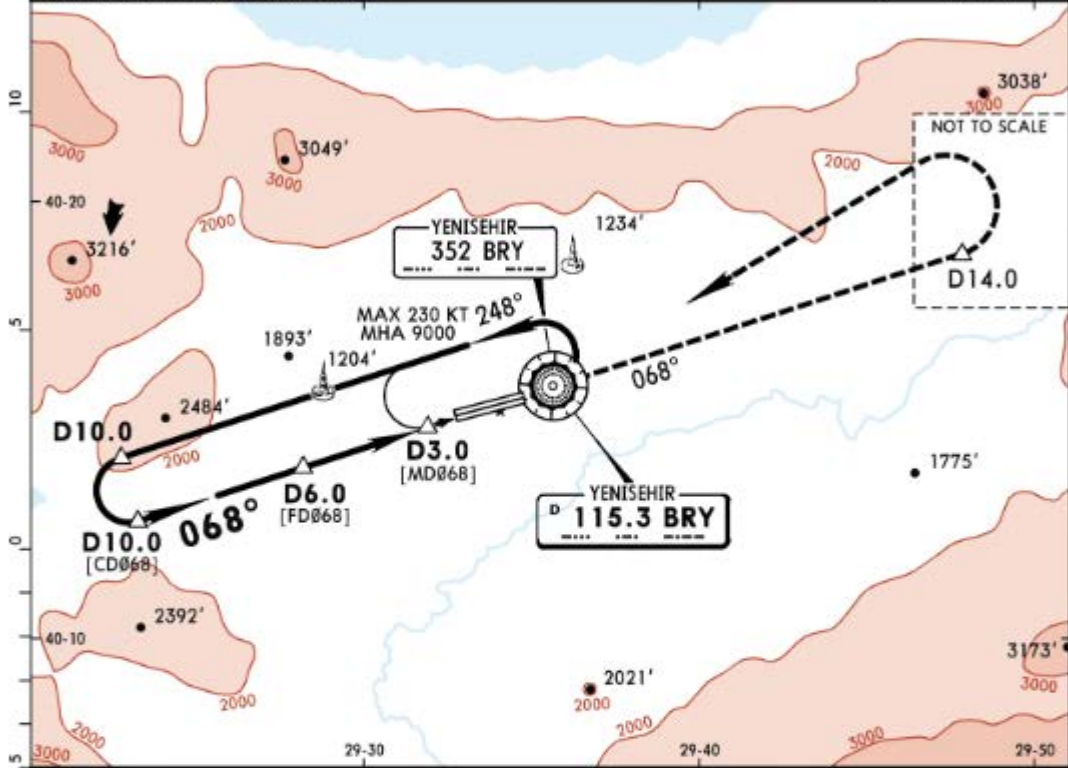
© JEPPESEN, 2001, 2019. ALL RIGHTS RESERVED.

LTBR/YEI
YENISEHIR

JEPPESEN
24 MAY 19 (13-2)

BURSA, TURKEY
NDB VOR DME

ATIS 124.575		YENISEHIR Approach 124.2 127.75		YENISEHIR Tower 124.2 127.75		Ground 121.7
VOR BRY 115.3	Final Apch Crs 068°	Minimum Alt D10.0 5800' (5037')	MDA(H) 3000' (2237')	Apt Elev 763'		
MISSED APCH: Climb on R-068. Cross 5800' within D14.0, then turn LEFT climbing to 9000' to VOR/NDB and hold.						
Alt Set: hPa		Apt Elev: 28 hPa		Trans level: By ATC		
Racetrack restricted to MAX 185 KT.						



MAP at D3.0	Lighting - Refer to Airport Chart	5800'	BRY on 115.3 within D14.0
Standard		↑	R-068

CIRCLE-TO-LAND

PANS OPS	Max Kts	MDA(H)		VIS
A	100	3000' (2237')		1500m
B	135	3000' (2237')		1600m
C	180	3000' (2237')		2400m
D	205	3000' (2237')		3600m

CHANGES: Trans alt.

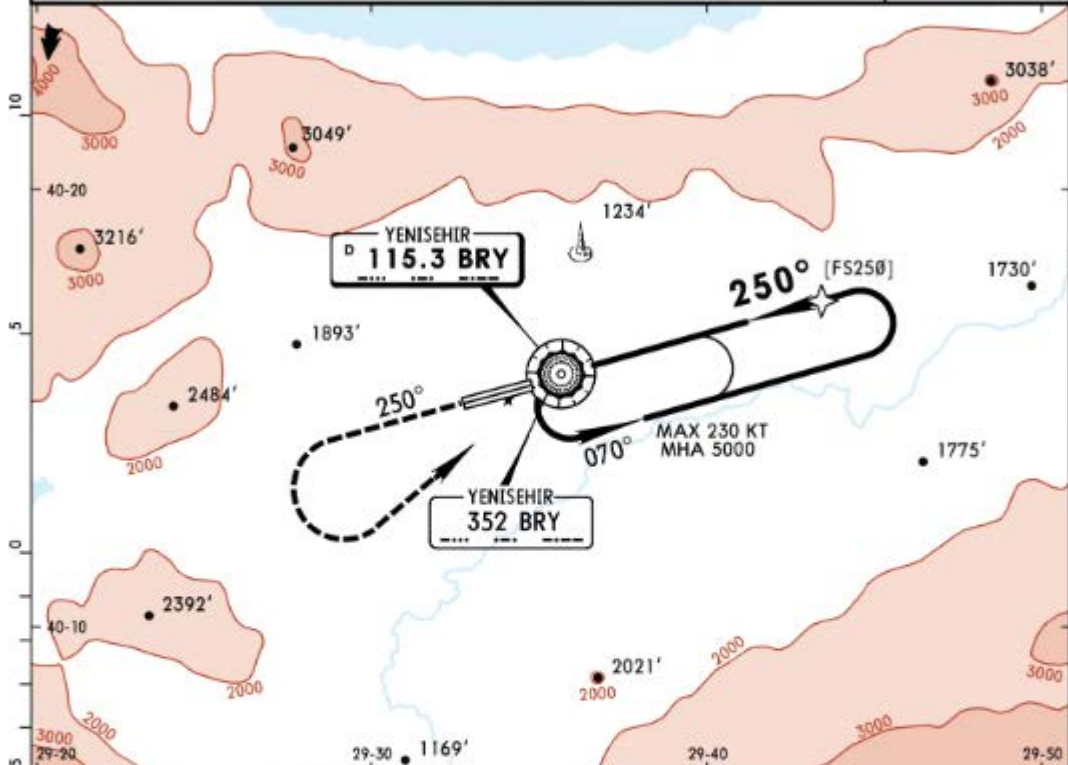
© JEPPESEN, 2001, 2019. ALL RIGHTS RESERVED.

LTBR/YEI
YENISEHIR

JEPPESEN
24 MAY 19 (13-3)

BURSA, TURKEY
NDB VOR

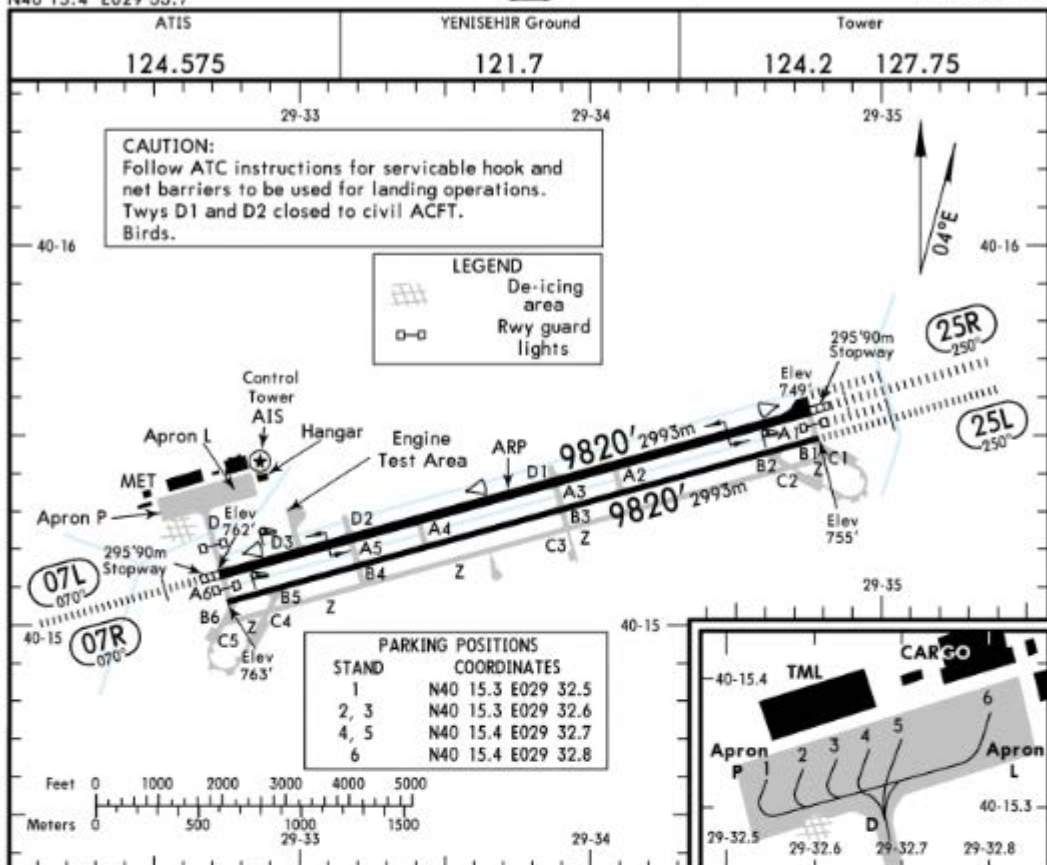
ATIS 124.575		YENISEHIR Approach 124.2 127.75		YENISEHIR Tower 124.2 127.75		Ground 121.7	
VOR BRY 115.3	Final Apch Crs 250°	No FAF		MDA(H) 3000' (2237')	Apt Elev 763'		
MISSED APCH: Climb on R-250 to 4000', then turn LEFT climbing to 5000' to VOR/NDB and hold.						<p>6000 9500 8000 360 090 270 MSA BRY VOR</p>	
Alt Set: hPa		Apt Elev: 28 hPa		Trans level: By ATC			Trans alt: 12000'
Racetrack restricted to MAX 185 KT.							



CIRCLE-TO-LAND

MAP at VOR/NDB				Lighting - Refer to Airport Chart	4000' on 115.3 ↑ R-250
Standard					

PANS OPS	Max Kts	MDA(H)		VIS
A	100	3000' (2237')		1500m
B	135	3000' (2237')		1600m
C	180	3000' (2237')		2400m
D	205	3000' (2237')		3600m



ADDITIONAL RUNWAY INFORMATION

RWY	USABLE LENGTHS			
	LANDING BEYOND		TAKE-OFF	WIDTH
	Threshold	Glide Slope		
07L	HIRL (60m) CL (15m) HIALS REIL PAPI (3.0°) RVR			148'
25R	HIRL (60m) CL (15m) HIALS-II ① PAPI (3.0°) RVR	8787'	2678m	45m

① SFL, TDZ, REIL

The innermost TDZ lights are not located in same alignment with innermost TDZ markings and slightly moved to the right.

② TAKE-OFF RUN AVAILABLE

<u>RWY 07L:</u> From rwy head	9820' (2993m)	<u>RWY 25R:</u> From rwy head	9820' (2993m)
twy A5 int	7618' (2322m)	twy A2 int	6535' (1992m)
twy A4 int	6532' (1991m)	twy A3 int	5541' (1689m)
twy A3 int	4278' (1304m)	twy A4 int	3287' (1002m)
twy A2 int	3284' (1001m)	twy A5 int	2201' (671m)

07R	HIRL (60m)			98'
③ 25L	HIRL (60m) HIALS VASI (MEHT 18')		①	30m

③ Rwy shall be used as twy by civil ACFT. It can be used as rwy for landing or take-off in emergency situations and when rwy 07L/25R is closed due to maintenance purposes.

④ TAKE-OFF RUN AVAILABLE

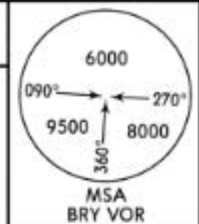
<u>RWY 07R:</u> From rwy head	9820' (2993m)	<u>RWY 25L:</u> From rwy head	9820' (2993m)
twy A5 int	7618' (2322m)	twy A2 int	6532' (1991m)
twy A4 int	6532' (1991m)	twy A3 int	5541' (1689m)
twy A3 int	4278' (1304m)	twy A4 int	3287' (1002m)
twy A2 int	3284' (1001m)	twy A5 int	2201' (671m)

Standard TAKE-OFF

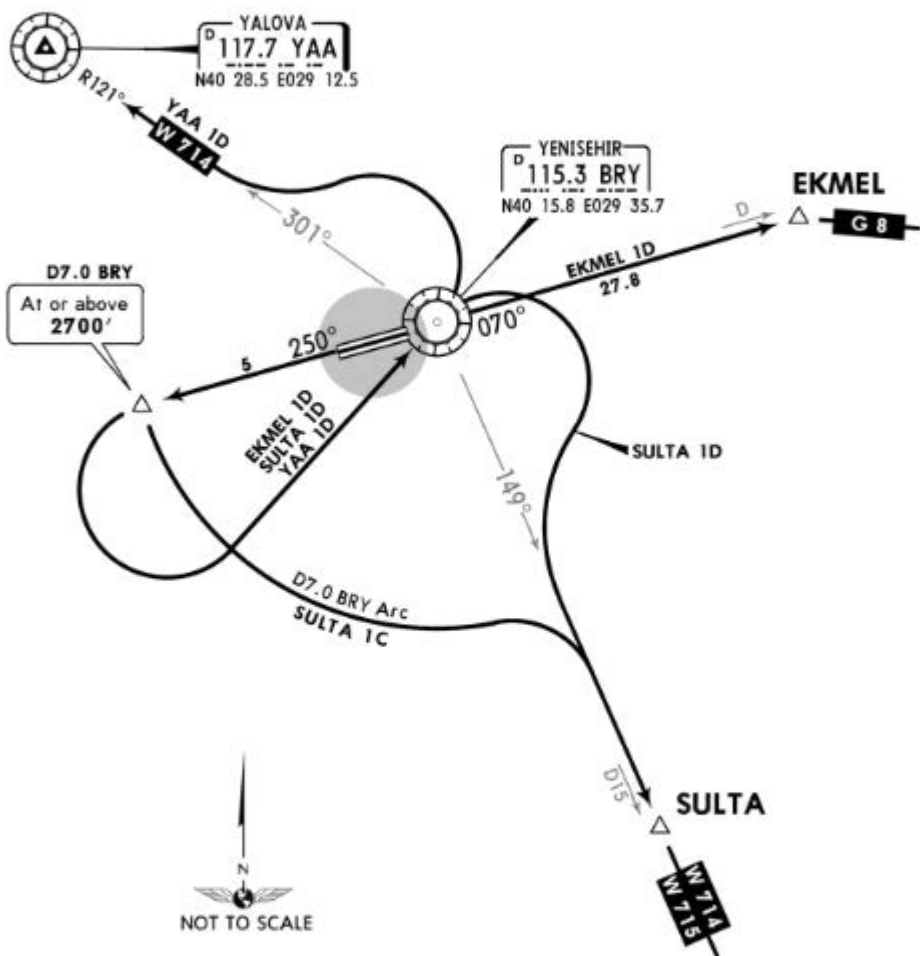
	Low Visibility Take-off					
	HIRL, CL & relevant RVR	RL, CL & relevant RVR	RL & CL	Day: RL or RCLM Night: RL or CL	Day: RL or RCLM Night: RL or CL	Adequate vis ref (Day only)
A						
B	TDZ, MID, RO	TDZ, MID, RO				
C	RVR 125m	RVR 150m	RVR 200m	RVR 300m	400m	500m
D						

Apt Elev
763'

Trans level: By ATC Trans alt: 12000'



EKMEL 1D [EKME1D]
SULTA 1C [SULT1C]
SULTA 1D [SULT1D]
YALOVA 1D (YAA 1D) [YAA1D]
DEPARTURES (RWY 25R)



These SIDs require minimum climb gradients of 407' per NM (6.7%) until passing 2700', then 334' per NM (5.5%)

Gnd speed-KT	75	100	150	200	250	300
407' per NM	509	679	1018	1357	1696	2036
334' per NM	418	557	835	1114	1392	1671

SID	ROUTING
EKMEL 1D	Intercept BRY R-250 to D7.0 BRY, turn LEFT to BRY VOR, BRY R-070 to EKMEL, join airway.
SULTA 1C	Intercept BRY R-250 to D7.0 BRY, turn LEFT, along D7.0 BRY Arc, intercept BRY R-149 to SULTA, join airways.
SULTA 1D	Intercept BRY R-250 to D7.0 BRY, turn LEFT to BRY VOR, turn RIGHT, intercept BRY R-149 to SULTA, join airways.
YAA 1D	Intercept BRY R-250 to D7.0 BRY, turn LEFT to BRY VOR, turn LEFT, intercept BRY R-301 to YAA VOR, join airway.