

LTBY/AOE
HASAN POLATKAN

JEPPESEN
14 SEP 18 (11-1)

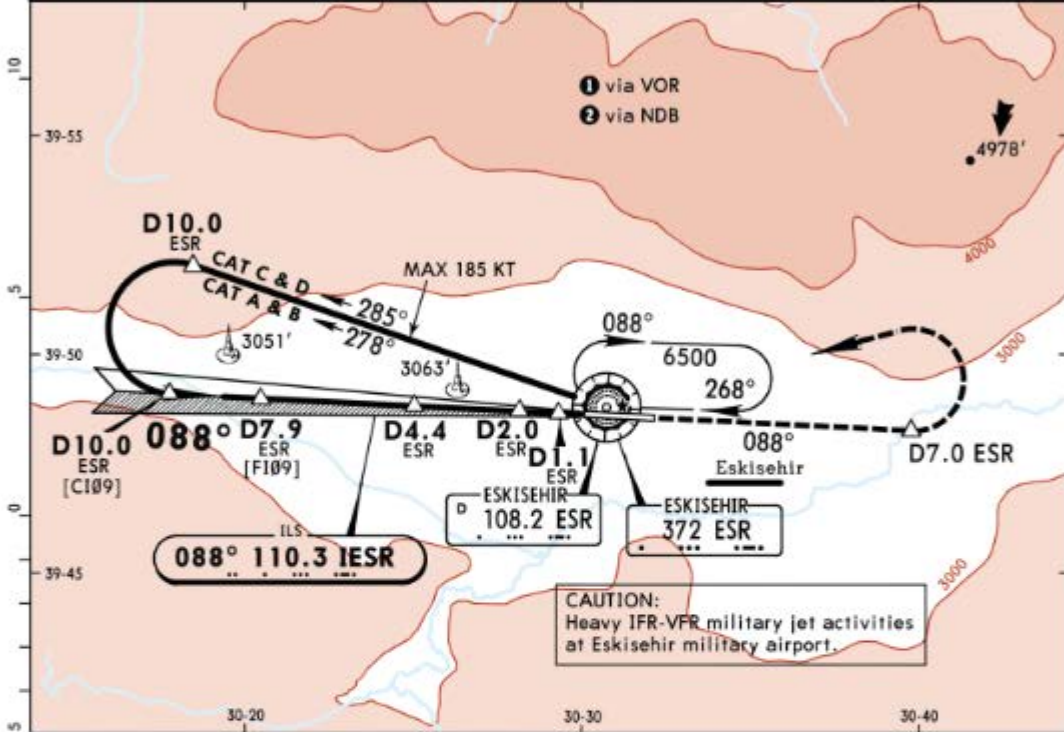
ESKISEHIR, TURKEY
ILS DME-1 or -2 Rwy 09

ESKISEHIR Approach		*ANADOLU Tower			*Ground
122.1		123.75			121.9

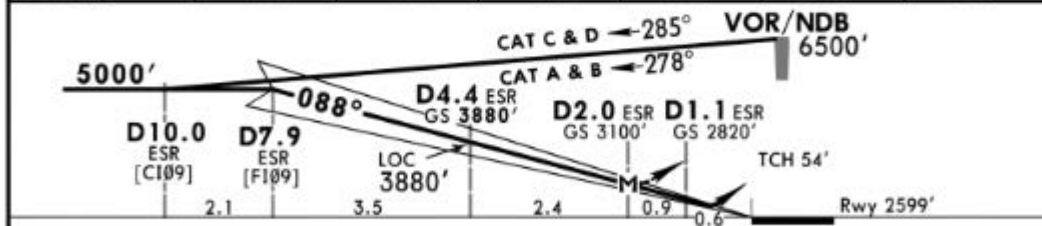
LOC IESR 110.3	Final Apch Crs 088°	GS D4.4 ESR 3880' (1281')	ILS DA(H) Refer to Minimums	Apt Elev 2599' Rwy 2599'	8000
--------------------------	-------------------------------	-------------------------------------	-----------------------------	-----------------------------	------

MISSED APCH: Climb on R-088 ESR/088° to 6000' within 7 NM, then climbing turn LEFT to 6500' proceed to VOR/NDB and hold.

Alt Set: hPa Rwy Elev: 92 hPa Trans level: By ATC Trans alt: 10000' MSA ESR VOR



LOC (GS out)	ESR DME	7.0	6.0	5.0	4.0	3.0	2.0
	ALTITUDE	4720'	4400'	4080'	3770'	3450'	3130'



Grnd speed-Kts	70	90	100	120	140	160	
ILS GS or LOC Descent Angle	3.00°	372	478	531	637	743	
MAP at D2.0 ESR							

Standard		STRAIGHT-IN LANDING RWY 09 ILS				LOC (GS out)		CIRCLE-TO-LAND	
Missed apch climb grad mim 8.0%		Missed apch climb grad mim 5.0%		Missed apch climb grad mim 6.4% CDFA		CAUTION: Not authorized South of airport			
DA(H) 2800' (201')		DA(H) 3500' (901')		DA(MDA(H)) 3100' (501')					
FULL ALS out		FULL ALS out		FULL ALS out					
A		RVR 1500m		RVR 1500m		Max Kts	MDA(H)	VIS	
B	RVR 550m	RVR 1200m		RVR 1500m		100	3500' (901')	1500m	
C						135	3500' (901')	1600m	
D		RVR 2400m		RVR 1600m		180	4800' (2201')	2400m	
						205	4800' (2201')	3600m	

CHANGES: Database identifiers.

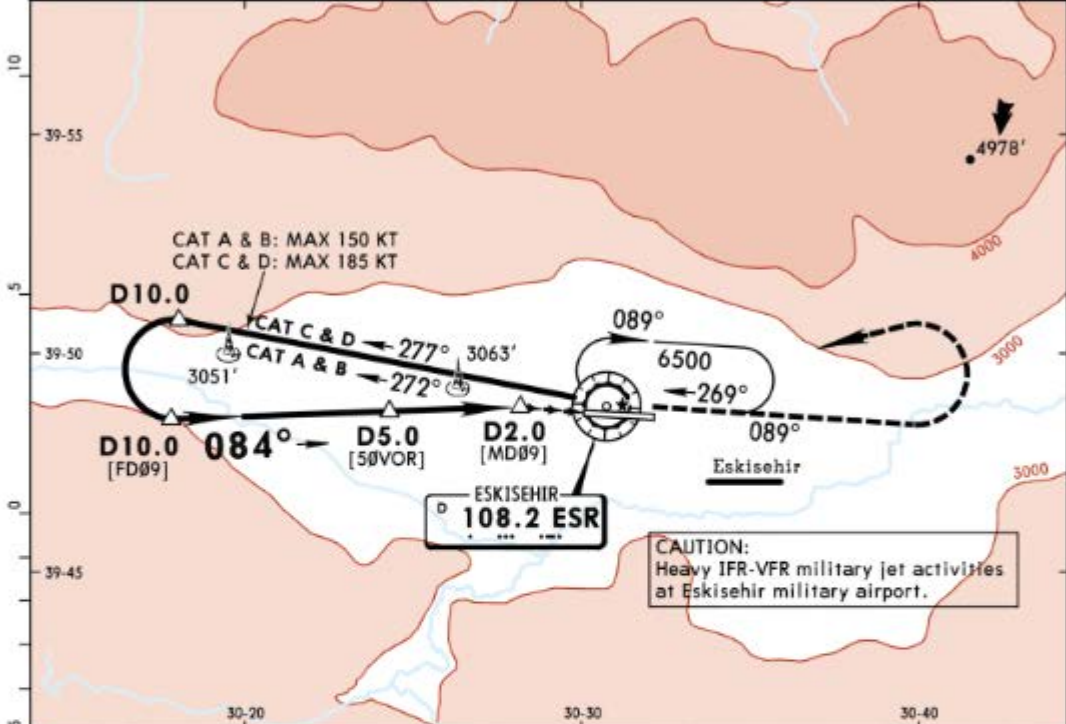
© JEPPESEN, 2012, 2018. ALL RIGHTS RESERVED.

ESKISEHIR Approach 122.1		*ANADOLU Tower 123.75			*Ground 121.9
-----------------------------	--	--------------------------	--	--	------------------

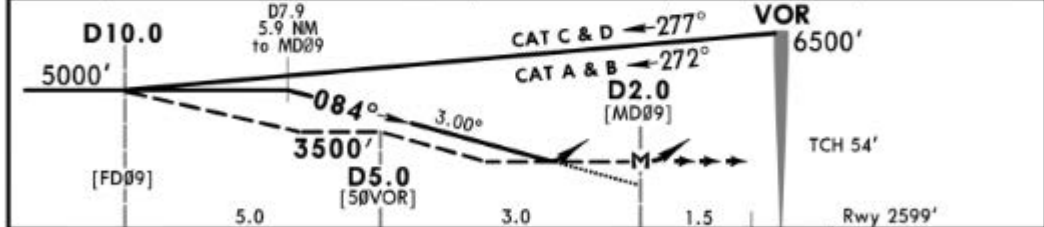
VOR ESR 108.2	Final Apch Crs 084°	Minimum Alt D5.0 3500' (901')	DA/MDA(H) 3350' (751')	Apt Elev 2599' Rwy 2599'	8000
-------------------------	-------------------------------	--	----------------------------------	-----------------------------	------

MISSED APCH: Climb on R-089 to 6000' within 7 NM, then climbing turn LEFT to 6500' proceed to VOR and hold.

Alt Set: hPa Rwy Elev: 92 hPa Trans level: By ATC Trans alt: 10000' MSA ESR VOR



ESR DME	7.0	6.0	5.0	4.0	3.0
ALTITUDE	4730'	4410'	4090'	3770'	3450'

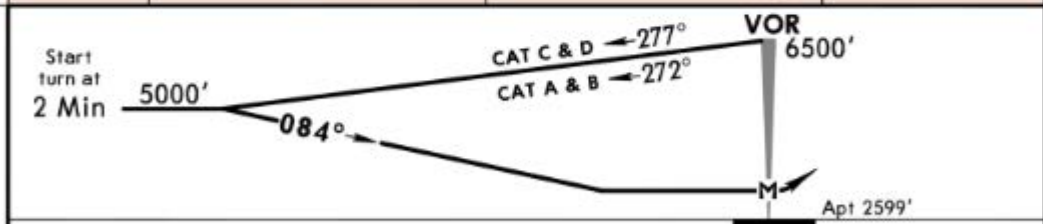
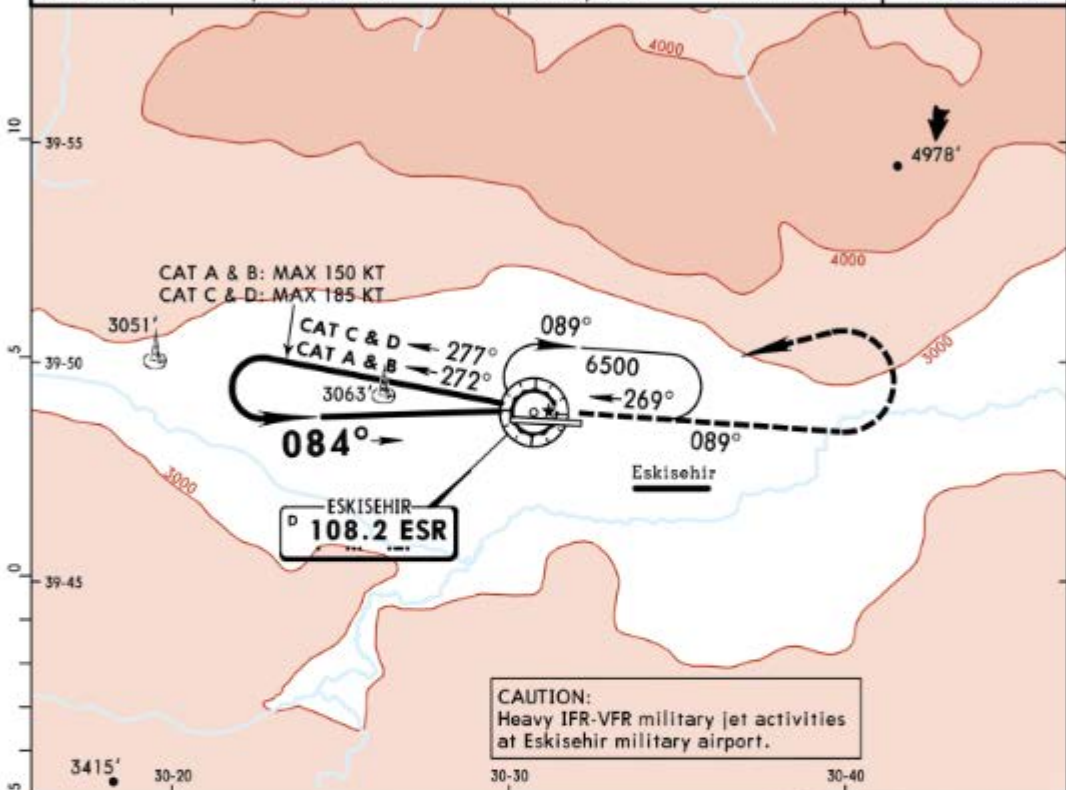


Gnd speed-Kts	70	90	100	120	140	160	ESR 108.2	6000'	ESR on 108.2 within 7 NM
Descent Angle	3.00°	372	478	531	637	849	↑	RT	R-089

Standard STRAIGHT-IN LANDING RWY 09				CIRCLE-TO-LAND CAUTION: Not authorized South of airport	
CDFA DA/MDA(H) 3350' (751')		non-CDFA MDA(H) 3350' (751')		Max Kts	VIS
ALS out		ALS out		100	3500' (901') 1 1500m
A	RVR 1500m	RVR 2900m	RVR 3700m	135	3500' (901') 1 1600m
B				180	4800' (2201') 1 2400m
C	RVR 2400m	RVR 3100m	RVR 3900m	205	4800' (2201') 1 3600m
D					

1 or higher straight-in minimums.

ESKISEHIR Approach 122.1		*ANADOLU Tower 123.75		*Ground 121.9	
VOR ESR 108.2	Final Apch Crs 084°	No FAF	MDA(H) Refer to Minimums	Apt Elev 2599'	8000
MISSED APCH: Climb on R-089 to 6000' within 7 NM, then climbing turn LEFT to 6500' proceed to VOR and hold.					
Alt Set: hPa		Apt Elev: 92 hPa		Trans level: By ATC	
				Trans alt: 10000'	
					MSA ESR VOR



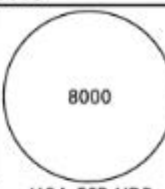
MAP at VOR	Lighting-Refer to Airport Chart	6000' on 108.2 within 7 NM	ESR R-089
------------	---------------------------------	----------------------------	-----------

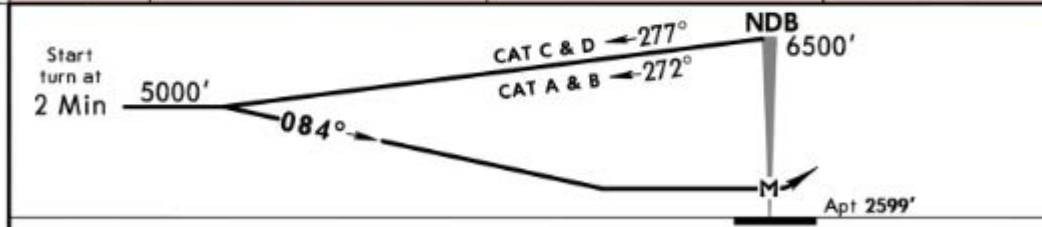
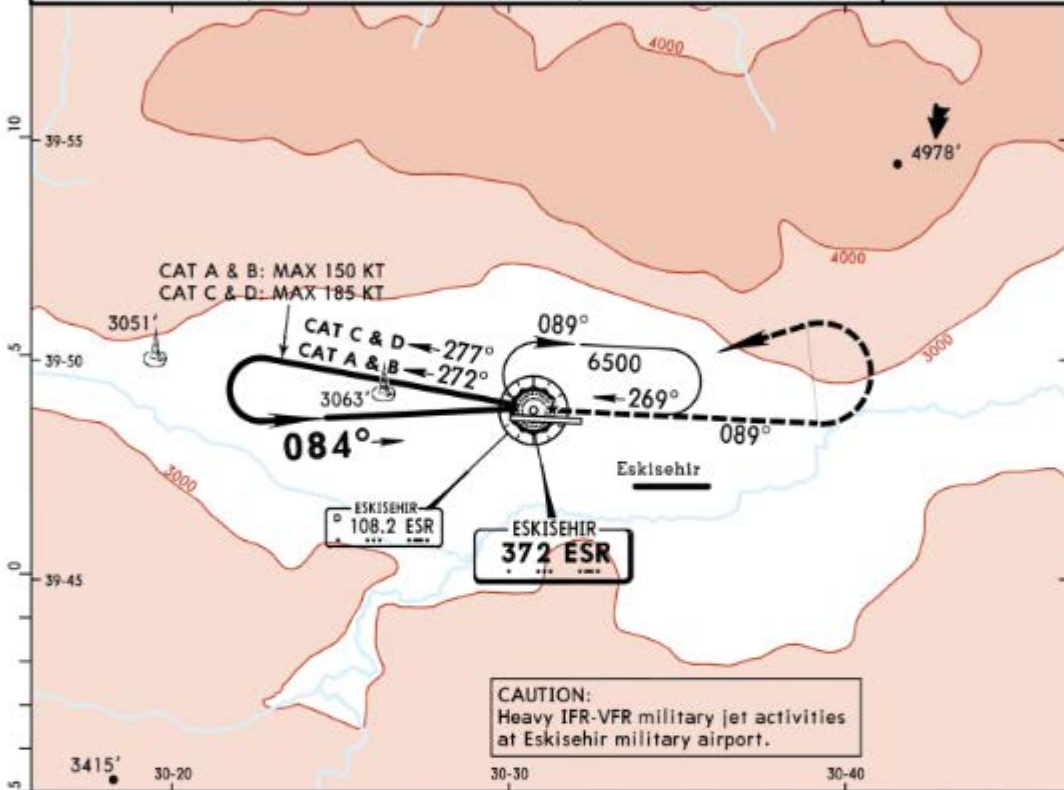
Standard CIRCLE-TO-LAND

CAUTION: Not authorized South of airport

	Max Kts	MDA(H)	VIS
A	100	3500' (901')	1500m
B	135	3500' (901')	1600m
C	180	4800' (2201')	2400m
D	205	4800' (2201')	3600m

PANS OPS

ESKISEHIR Approach 122.1		*ANADOLU Tower 123.75		*Ground 121.9
NDB ESR 372	Final Apch Crs 084°	No FAF	MDA(H) Refer to Minimums	Apt Elev 2599'
MISSED APCH: Climb on 089° from NDB to 6000' within 7 NM, then climbing turn LEFT to 6500' proceed to NDB and hold.				 8000 MSA ESR NDB
Alt Set: hPa	Apt Elev: 92 hPa	Trans level: By ATC	Trans alt: 10000'	

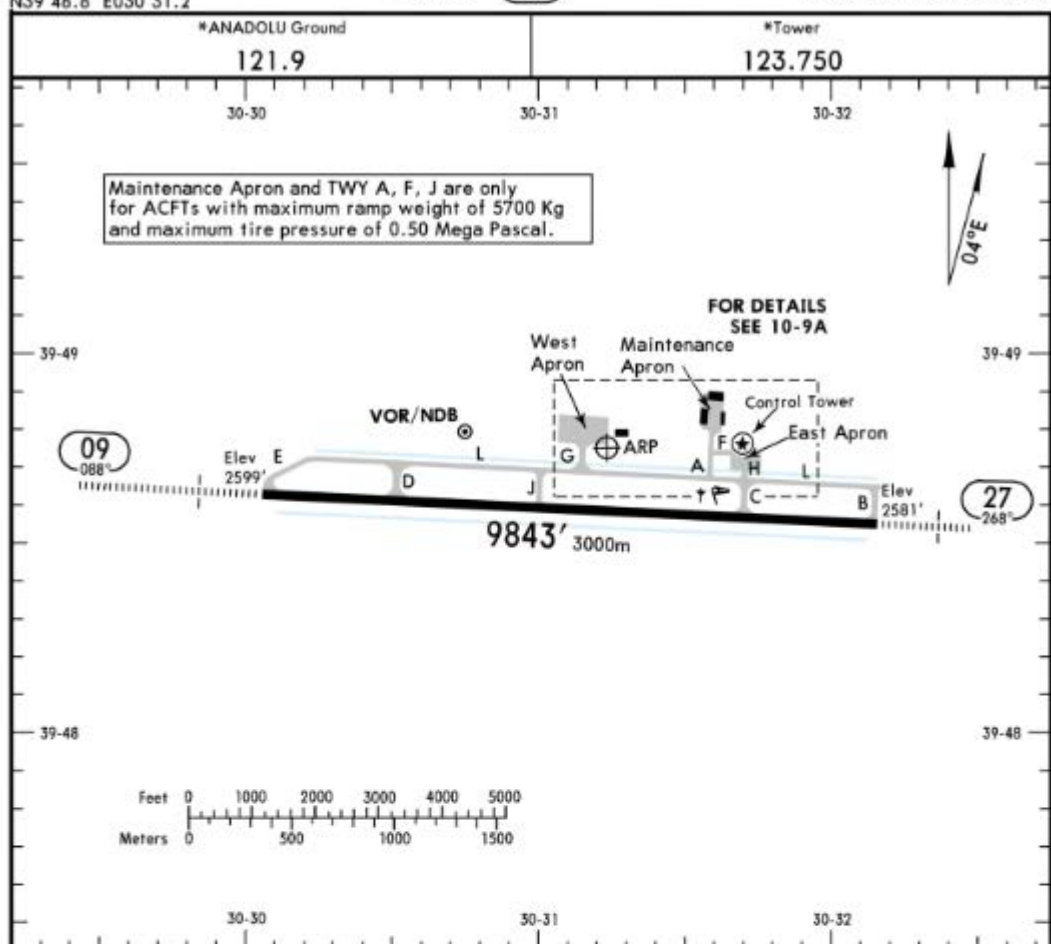


MAP at NDB	Lighting-Refer to Airport Chart	6000'	089°	on from ESR within 7 NM
Standard		RT	372	

CIRCLE-TO-LAND
CAUTION: Not authorized South of airport

	Max Kts	MDA(H)	VIS
A	100	3500' (901')	1500m
B	135	3500' (901')	1600m
C	180	4800' (2201')	2400m
D	205	4800' (2201')	3600m

PANS OPS



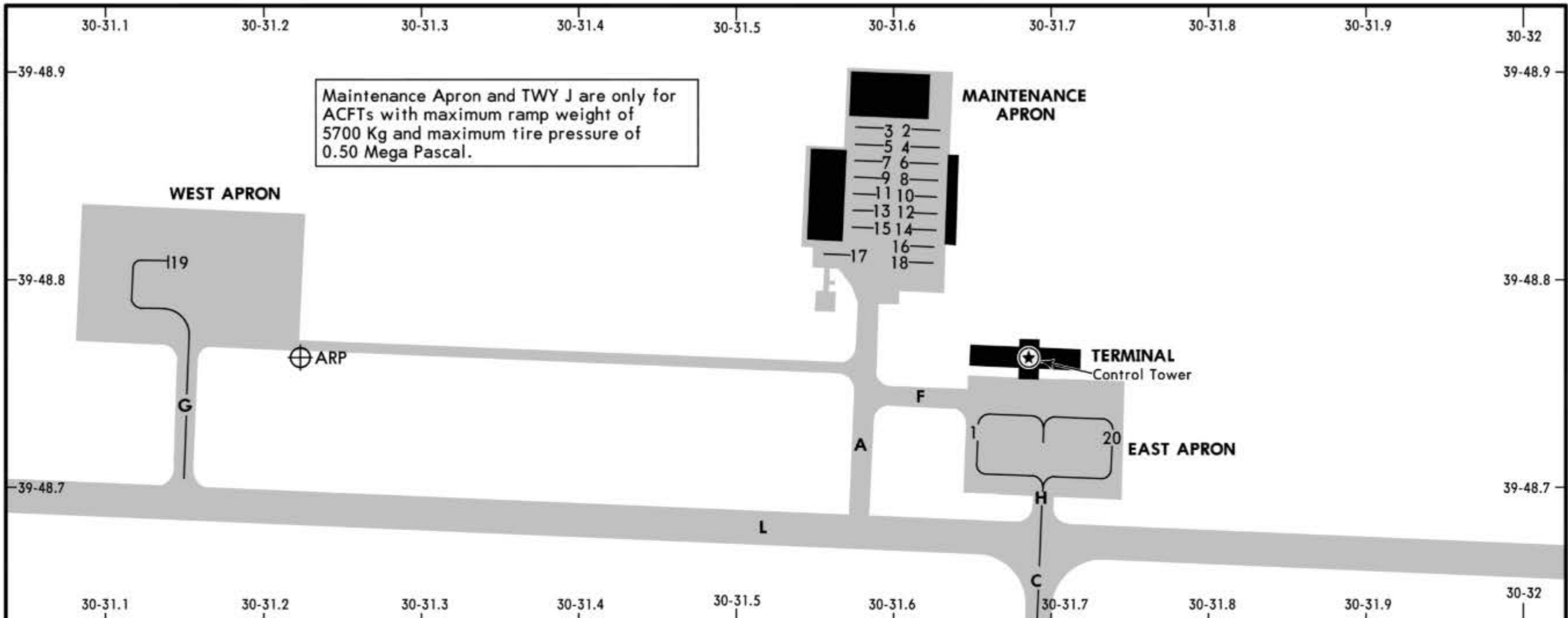
ADDITIONAL RUNWAY INFORMATION

RWY	HIRL (60m) HIALS REIL SFL PAPI (angle 3.0°)	USABLE LENGTHS		TAKE-OFF	WIDTH
		Threshold	Glide Slope		
09	HIRL (60m) HIALS REIL SFL PAPI (angle 3.0°)		8749' 2667m		148'
27	HIRL (60m) HIALS REIL PAPI (angle 3.0°)				45m

Standard

TAKE-OFF

	Low Visibility Take-off	Day: RL or RCLM Night: RL	Adequate vis ref (Day only)
A			
B			
C	RVR 300m	400m	500m
D			



Maintenance Apron and TWY J are only for ACFTs with maximum ramp weight of 5700 Kg and maximum tire pressure of 0.50 Mega Pascal.

INS COORDINATES	
STAND No.	COORDINATES
1	N39 48.7 E030 31.7
2 thru 5	N39 49.0 E030 31.6
6 thru 18	N39 48.9 E030 31.6
19	N39 48.8 E030 31.1
20	N39 48.7 E030 31.7

CHANGES: None.

© JEPPESEN, 2013, 2016. ALL RIGHTS RESERVED.