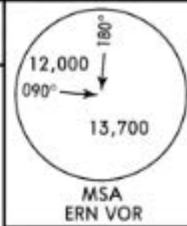
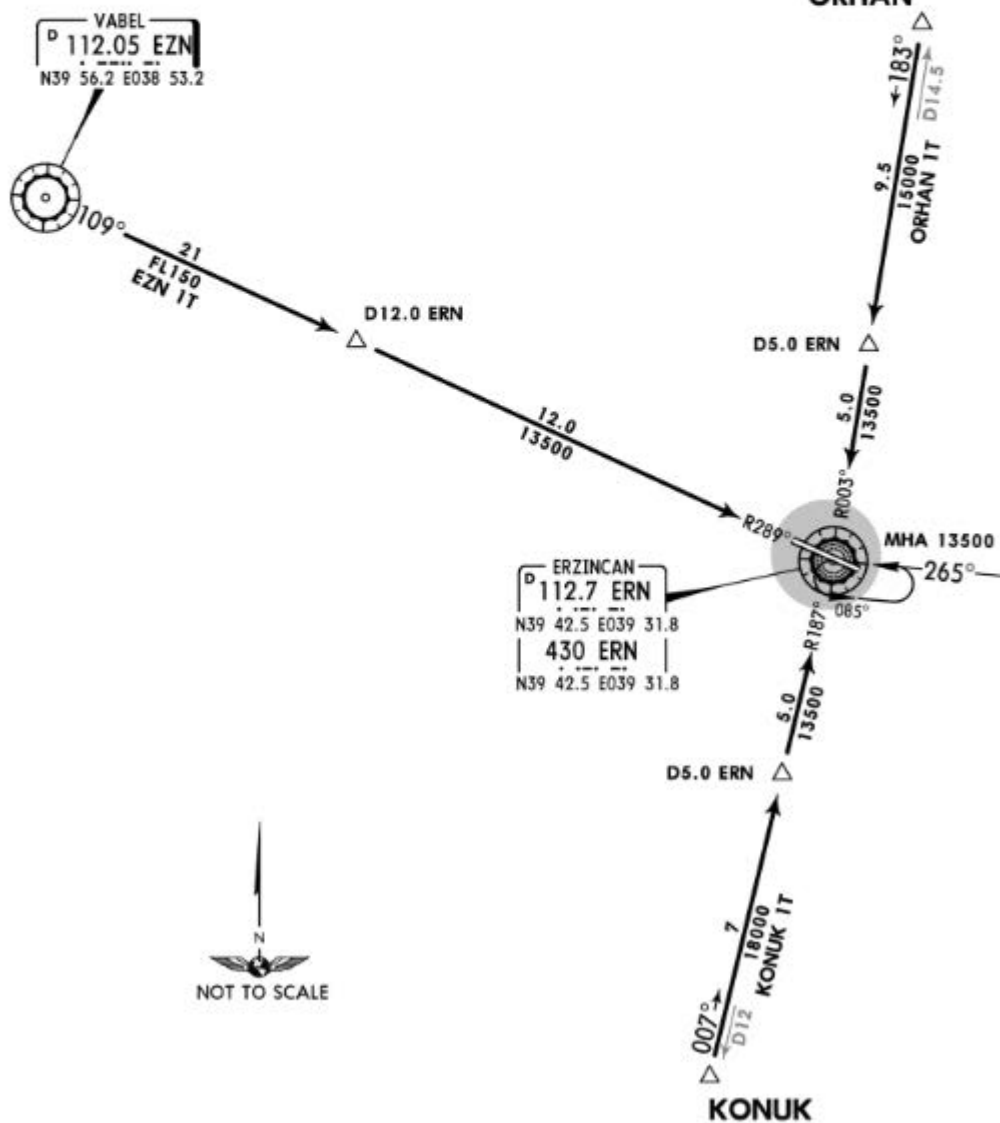


Apt Elev
3791'

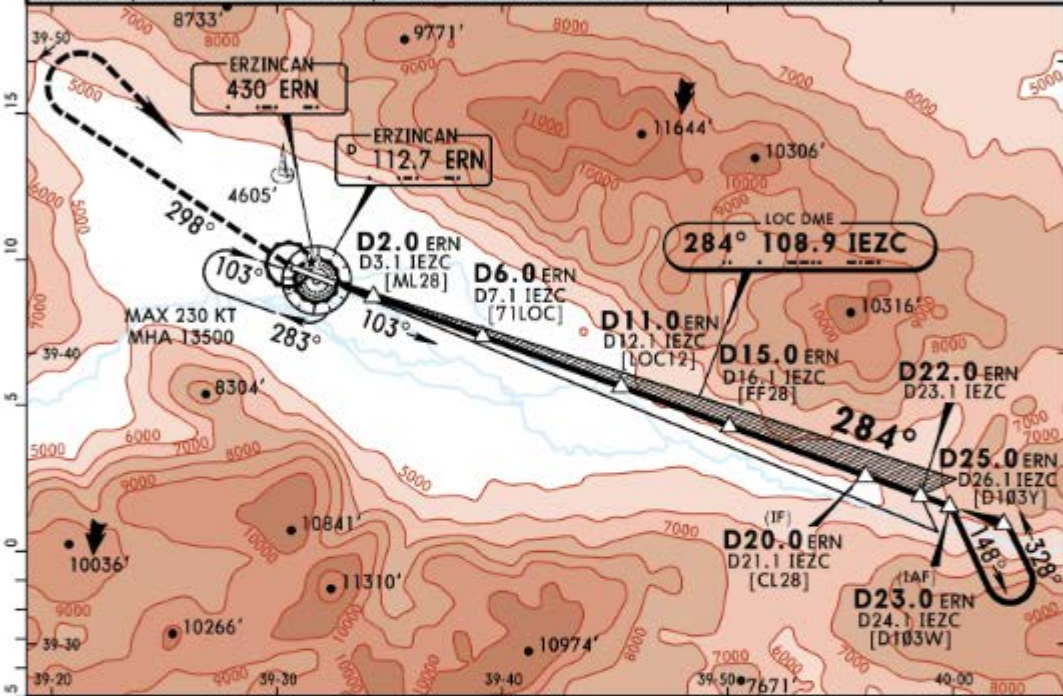
Alt Set: hPa Trans level: By ATC Trans alt: 15000'



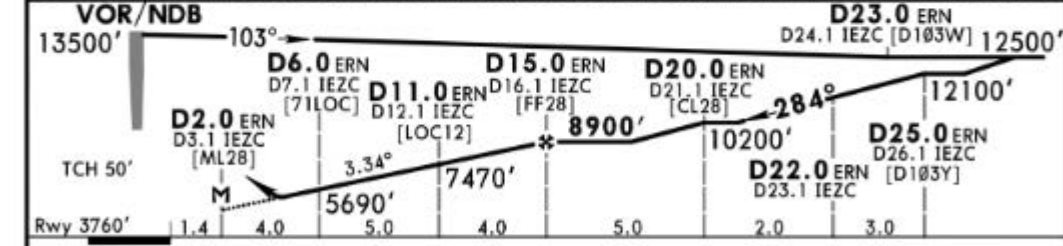
EZN 1T [EZN1T]
KONUK 1T [KONU1T]
ORHAN 1T [ORHA1T]
RWY 10 ARRIVALS



*ERZINCAN Approach		*ERZINCAN Tower			*Ground
118.5	120.05	118.5	120.05	121.9	
LOC IEZC 108.9	Final Apch Crs 284°	Minimum Alt D15.0 ERN 8900' (5140')	DA/MDA(H) Refer to Minimums	Apt Elev 3791'	Rwy 3760'
<p>MISSED APCH: Climb on R-298 (298° from NDB) to 8550', then climbing turn RIGHT to VOR/NDB at 13500' and hold. MAX 210 KT until inbound VOR/NDB. If unable to reach VOR/NDB at 13500', proceed via R-103 (103° from NDB) to 11500', then climbing turn LEFT to 13500' and join the holding.</p>					
Alt Set: hPa Rwy Elev: 130 hPa Trans level: By ATC Trans alt: 15000'					MSA ERN VOR/NDB
1. DME required. 2. VOR or NDB required. 3. Procedure turn restricted to MAX 230 KT.					



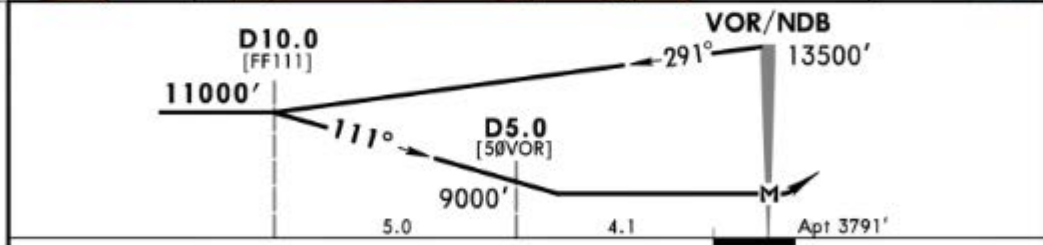
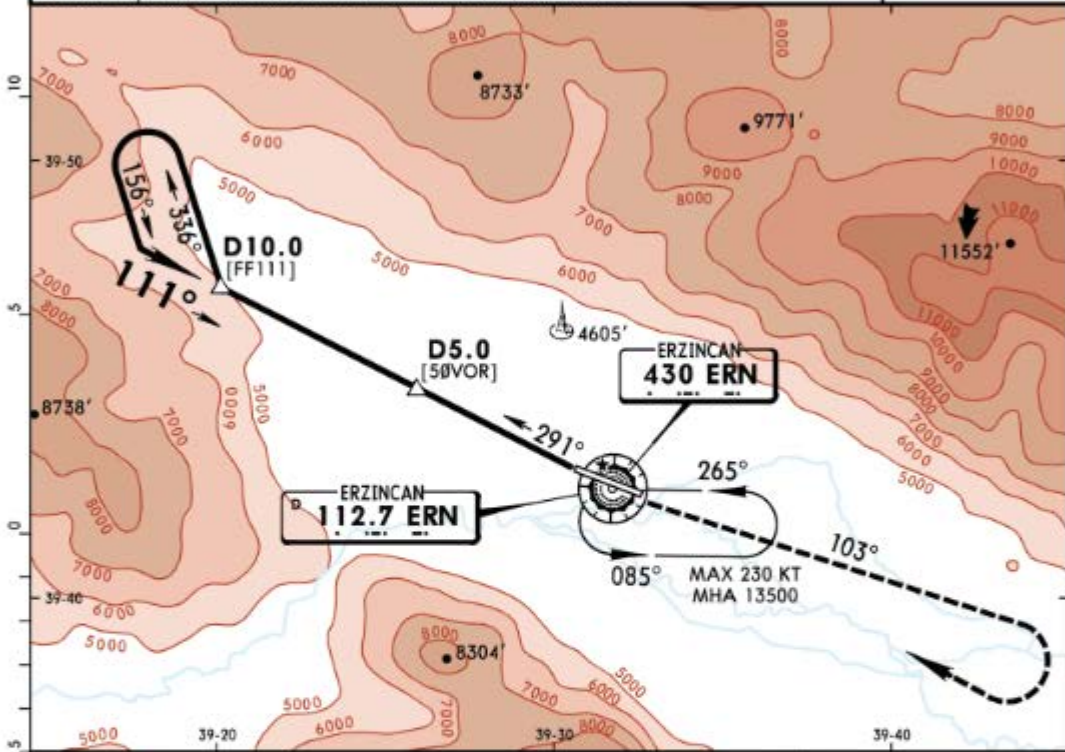
LOC	IEZC DME	3.0	4.0	5.0	6.0	7.0	8.0	9.0	10.0	11.0	12.0	13.0	14.0	15.0	16.0
(GS out)	ALTITUDE	4280'	4630'	4990'	5340'	5700'	6050'	6410'	6760'	7110'	7470'	7820'	8180'	8530'	8890'



Gnd speed-Kts	70	90	100	120	140	160									
Descent Angle	3.34°	414	532	591	709	827	946								
MAP at D2.0 ERN/D3.1 IEZC															

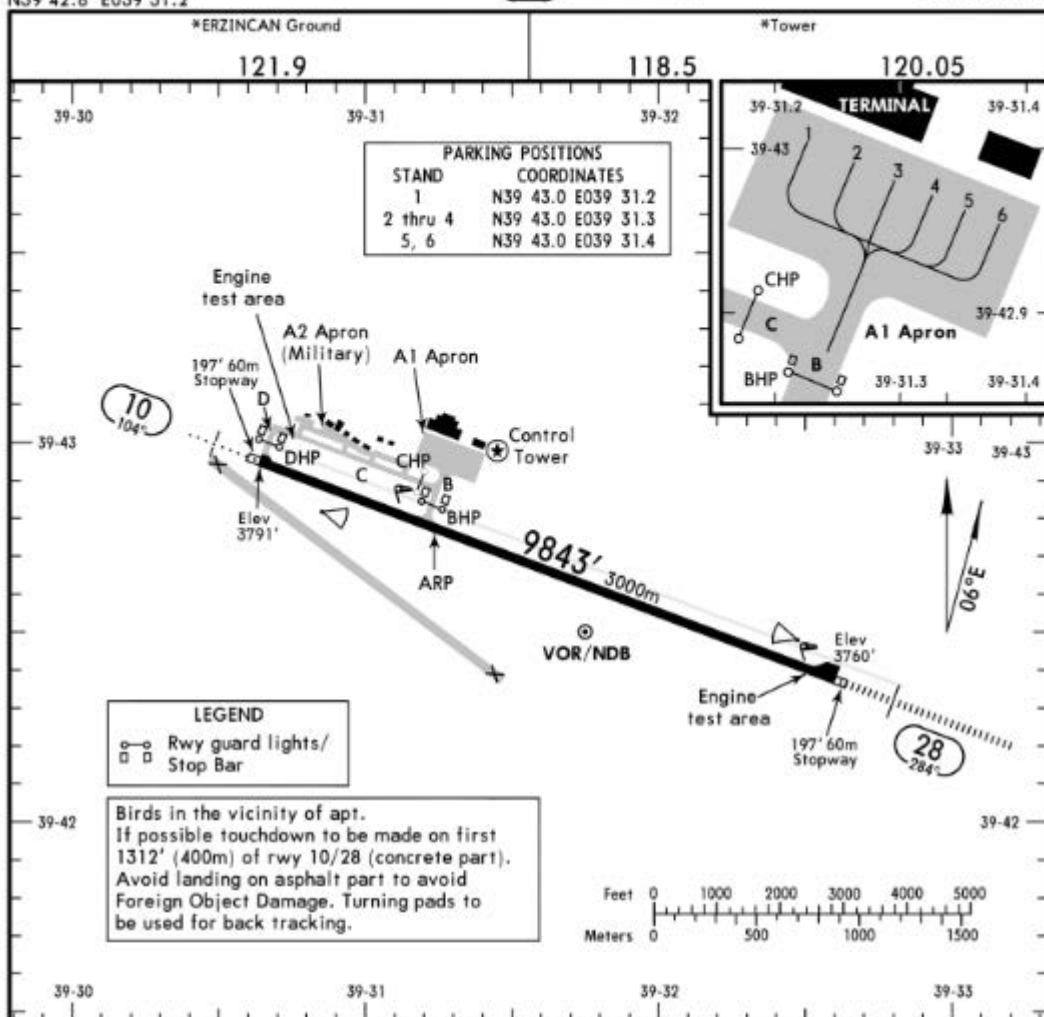
Standard		STRAIGHT-IN LANDING RWY 28		CIRCLE-TO-LAND		
Missed apch climb grad mim 5.0%		Missed apch climb grad mim 2.5%				
CDFA		CDFA				
DA/MDA(H) 4190' (430')		DA/MDA(H) 6220' (2460')				
ALS out		ALS out				
A	RVR 1500m	RVR 5000m		Max Kts	MDA(H) VIS	
B				100	7500' (3709')	1500m
C	RVR 1300m	RVR 5000m		135	7500' (3709')	1600m
D				180	7500' (3709')	2400m
				205	8800' (5009')	3600m

*ERZINCAN Approach			*ERZINCAN Tower			*Ground			
118.5		120.05		118.5		120.05		121.9	
VOR ERN	NDB ERN	Final Apch Crs	Minimum Alt	MDA(H)	Apt Elev 3791'				
112.7	430	111°	D10.0 11000' (7209')	Refer to Minimums					
<p>MISSED APCH: Climb on R-103 (103° from NDB) to 10000', then climbing turn RIGHT to VOR/NDB at 13500' and hold.</p> <p>MAX 185 KT until inbound VOR/NDB. If unable to reach VOR/NDB at 13500', proceed via R-291 (291° from NDB) to 13000', then turn LEFT and join the holding.</p>									
Alt Set: hPa			Rwy Elev: 131 hPa		Trans level: By ATC		Trans alt: 15000'		
1. DME required. 2. Procedure turn restricted to MAX 185 KT.									



MAP at VOR/NDB							Lighting-Refer to Airport Chart	Refer to Missed Apch above
----------------	--	--	--	--	--	--	---------------------------------	----------------------------

PANS OPS	Max Kts	CIRCLE-TO-LAND	
		MDA(H)	VIS
A	100	7500' (3709')	1500m
B	135	7500' (3709')	1600m
C	180	7500' (3709')	2400m
D	205	8800' (5009')	3600m



ADDITIONAL RUNWAY INFORMATION

RWY						USABLE LENGTHS		TAKE-OFF	WIDTH
						Threshold	Glide Slope		
10	HIRL (60m)	HIALS	REIL	PAPI (3.0°)	RVR			①	148'
28	HIRL (60m)	HIALS	REIL	SFL PAPI (3.0°)	RVR				45m

① TAKE OFF RUN AVAILABLE

RWY 10: From rwy head 9843' (3000m)
twy B int 6808' (2075m)

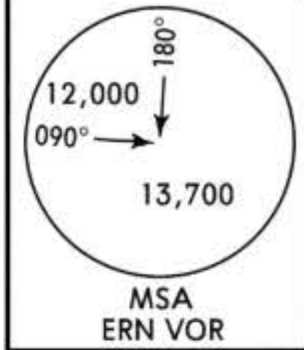
Standard

TAKE-OFF

A B C D	Low Visibility Take-off		
	Day: RL & RCLM Night: RL	Day: RL or RCLM Night: RL	Adequate vis ref (Day only)
	RVR 300m	400m	500m

Apt Elev
3791'

Trans level: By ATC Trans alt: 15000'

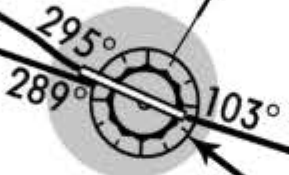


DEPARTURES
EZN 1A
EZN 1B
EZN 1E
BASED ON VORDME

VABEL
D 112.05 EZN
N39 56.2 E038 53.2



ERZINCAN
D 112.7 ERN
N39 42.5 E039 31.8



MAX 205 KT
until established
on track inbound
to ERN VOR

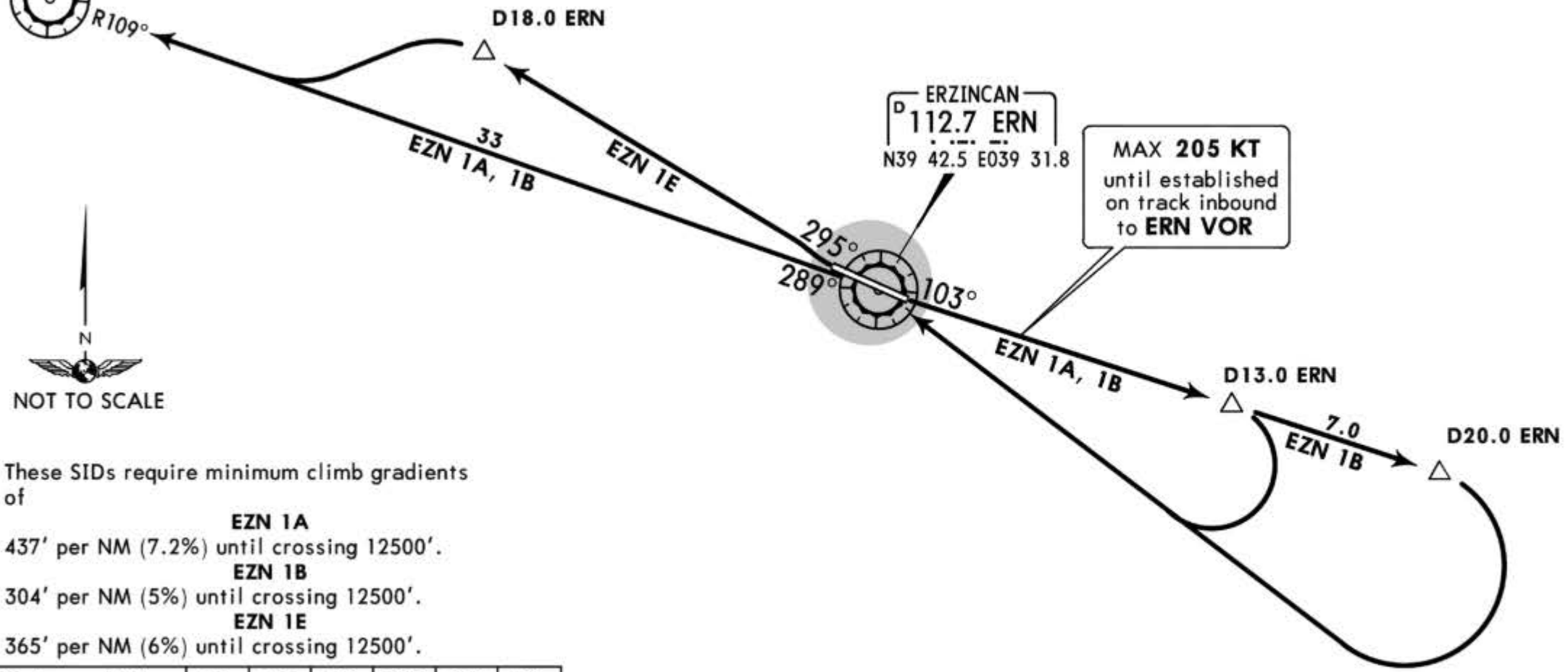


These SIDs require minimum climb gradients of

- EZN 1A**
437' per NM (7.2%) until crossing 12500'.
- EZN 1B**
304' per NM (5%) until crossing 12500'.
- EZN 1E**
365' per NM (6%) until crossing 12500'.

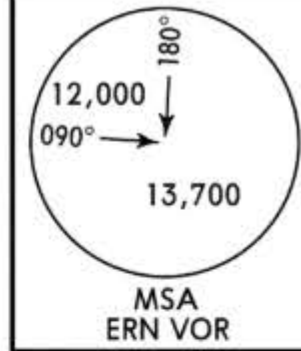
Gnd speed-KT	75	100	150	200	250	300
437' per NM	547	729	1094	1458	1823	2187
365' per NM	456	608	911	1215	1519	1823
304' per NM	380	506	760	1013	1266	1519

SID	RWY	ROUTING
EZN 1A	10	Climb on ERN R-103 to D13.0 ERN, turn RIGHT to ERN VOR, ERN R-289 to EZN VOR.
EZN 1B		Climb on ERN R-103 to D20.0 ERN, turn RIGHT to ERN VOR, ERN R-289 to EZN VOR.
EZN 1E	28	Climb on ERN R-295 to D18.0 ERN, turn LEFT, intercept ERN R-289 to EZN VOR.



Apt Elev
3791'

Trans level: By ATC Trans alt: 15000'



EZN 1C
EZN 1D
EZN 1F
DEPARTURES
BASED ON VOR

VABEL
D 112.05 EZN
N39 56.2 E038 53.2

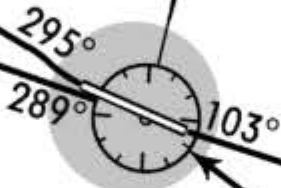


At
10000'

EZN 1F
33
EZN 1C, 1D

ERZINCAN
112.7 ERN
N39 42.5 E039 31.8

MAX 205 KT
until established
on track inbound
to ERN VOR



EZN 1C
Turn at
9000'

At
10000'

EZN 1C, 1D

EZN 1D



NOT TO SCALE

These SIDs require minimum climb gradients of

EZN 1C

437' per NM (7.2%) until crossing 12500'.

EZN 1D

304' per NM (5%) until crossing 12500'.

EZN 1F

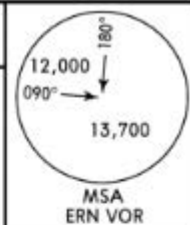
365' per NM (6%) until crossing 12500'.

Gnd speed-KT	75	100	150	200	250	300
437' per NM	547	729	1094	1458	1823	2187
365' per NM	456	608	911	1215	1519	1823
304' per NM	380	506	760	1013	1266	1519

SID	RWY	ROUTING
EZN 1C	10	Climb on ERN R-103 to 9000', turn RIGHT to ERN VOR, ERN R-289 to EZN VOR.
EZN 1D		Climb on ERN R-103 to 10000', turn RIGHT to ERN VOR, ERN R-289 to EZN VOR.
EZN 1F	28	Climb on ERN R-295 to 10000', turn LEFT, intercept ERN R-289 to EZN VOR.

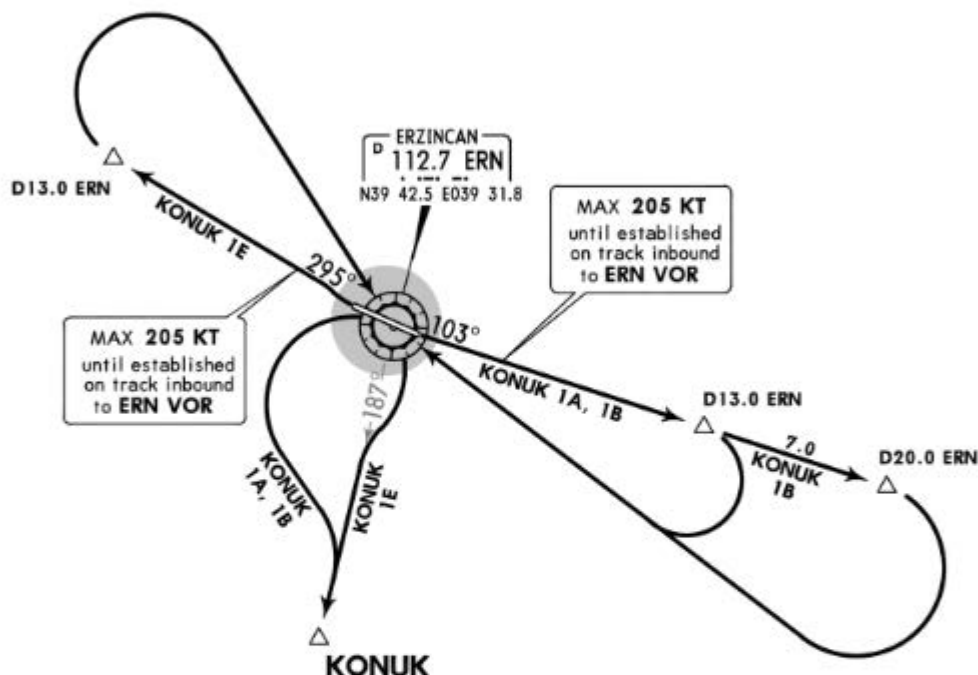
Apt Elev
3791'

Trans level: By ATC Trans alt: 15000'



KONUK 1A [KONU1A]
KONUK 1B [KONU1B]
KONUK 1E [KONU1E]

DEPARTURES
BASED ON VORDME



These SIDs require minimum climb gradients of

KONUK 1A
437' per NM (7.2%) until crossing 18000'.

KONUK 1B
304' per NM (5%) until crossing 18000'.

KONUK 1E
365' per NM (6%) until crossing 18000'.

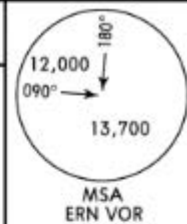
Gnd speed-KT	75	100	150	200	250	300
437' per NM	547	729	1094	1458	1823	2187
365' per NM	456	608	911	1215	1519	1823
304' per NM	380	506	760	1013	1266	1519



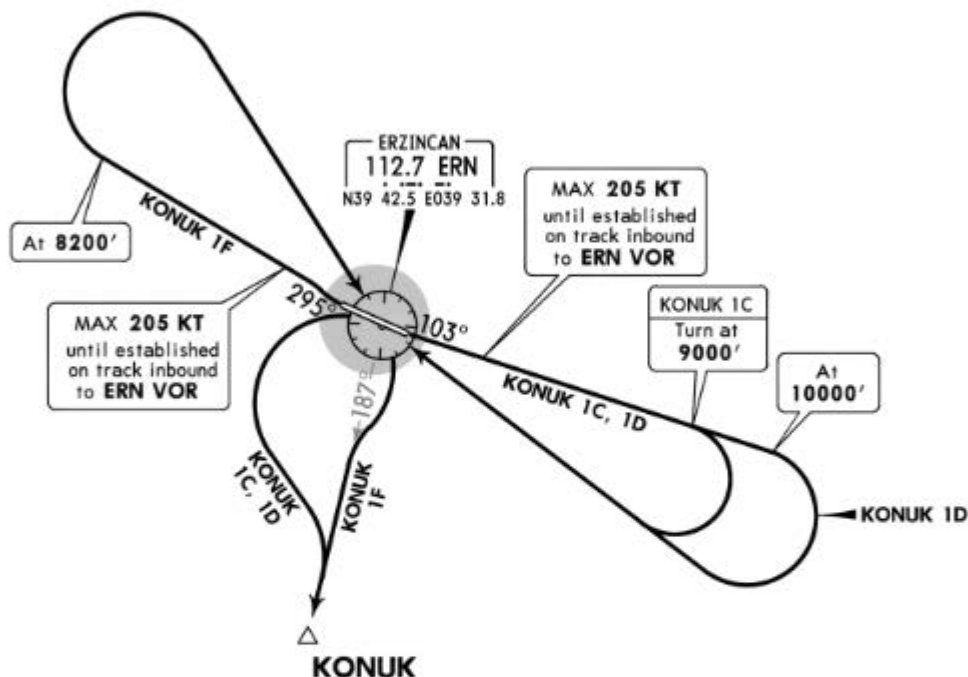
SID	RWY	ROUTING
KONUK 1A	10	Climb on ERN R-103 to D13.0 ERN, turn RIGHT to ERN VOR, turn LEFT, intercept ERN R-187, then join airway.
KONUK 1B		Climb on ERN R-103 to D20.0 ERN, turn RIGHT to ERN VOR, turn LEFT, intercept ERN R-187, then join airway.
KONUK 1E	28	Climb on ERN R-295 to D13.0 ERN, turn RIGHT to ERN VOR, turn RIGHT, intercept ERN R-187, then join airway.

Apt Elev
3791'

Trans level: By ATC Trans alt: 15000'



KONUK 1C [KONU1C]
KONUK 1D [KONU1D]
KONUK 1F [KONU1F]
DEPARTURES
BASED ON VOR



These SIDs require minimum climb gradients of

- KONUK 1C**
437' per NM (7.2%) until crossing 18000'.
- KONUK 1D**
304' per NM (5%) until crossing 18000'.
- KONUK 1F**
365' per NM (6%) until crossing 18000'.

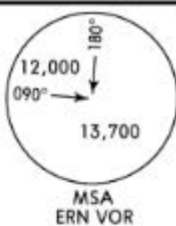


Gnd speed-KT	75	100	150	200	250	300
437' per NM	547	729	1094	1458	1823	2187
365' per NM	456	608	911	1215	1519	1823
304' per NM	380	506	760	1013	1266	1519

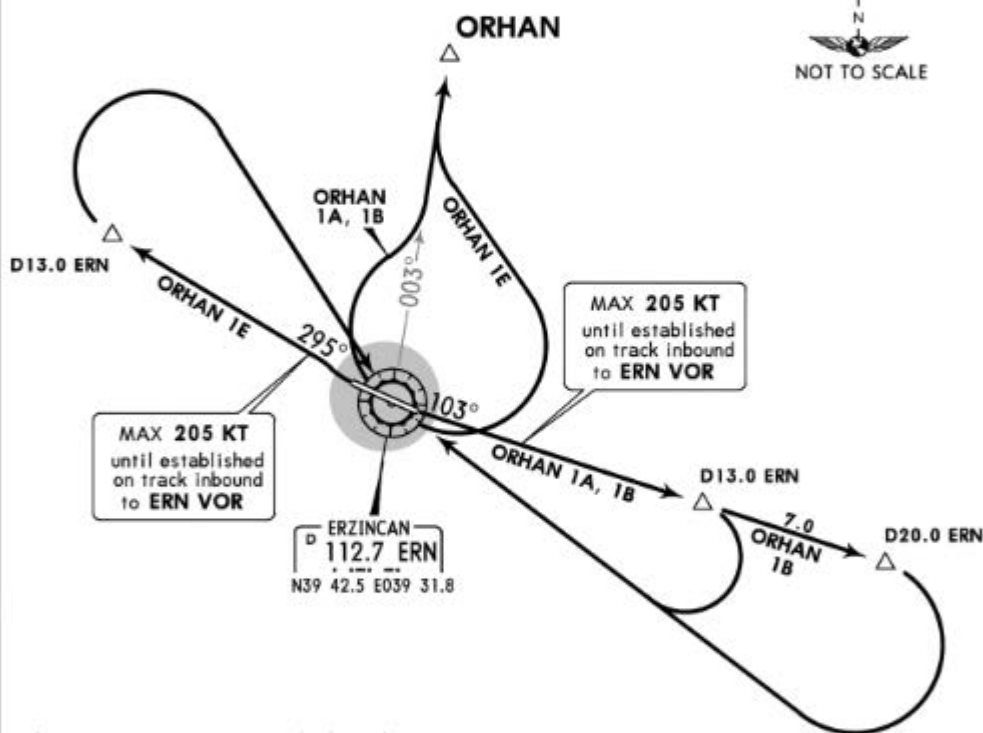
SID	RWY	ROUTING
KONUK 1C	10	Climb on ERN R-103 to 9000', turn RIGHT to ERN VOR, turn LEFT, intercept ERN R-187, then join airway.
KONUK 1D		Climb on ERN R-103 to 10000', turn RIGHT to ERN VOR, turn LEFT, intercept ERN R-187, then join airway.
KONUK 1F	28	Climb on ERN R-295 to 8200', turn RIGHT to ERN VOR, turn RIGHT, intercept ERN R-187, then join airway.

Apt Elev
3791'

Trans level: By ATC Trans alt: 15000'



ORHAN 1A [ORHA1A]
ORHAN 1B [ORHA1B]
ORHAN 1E [ORHA1E]
DEPARTURES
BASED ON VORDME



These SIDs require minimum climb gradients of

ORHAN 1A
437' per NM (7.2%) until crossing 18000'.

ORHAN 1B
304' per NM (5%) until crossing 18000'.

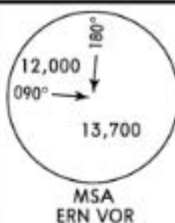
ORHAN 1E
365' per NM (6%) until crossing 18000'.

Gnd speed-KT	75	100	150	200	250	300
437' per NM	547	729	1094	1458	1823	2187
365' per NM	456	608	911	1215	1519	1823
304' per NM	380	506	760	1013	1266	1519

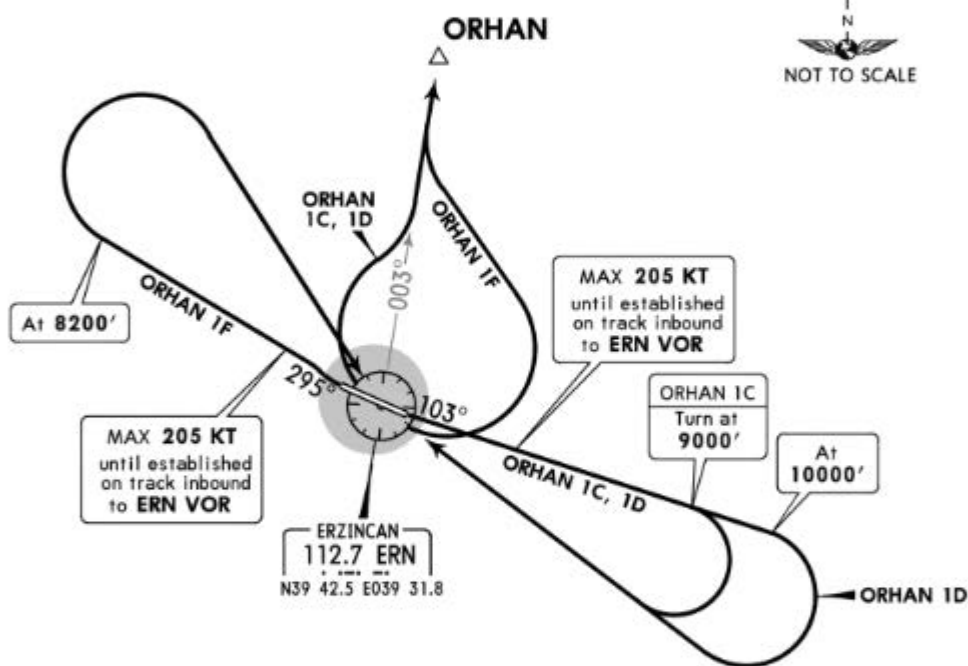
SID	RWY	ROUTING
ORHAN 1A	10	Climb on ERN R-103 to D13.0 ERN, turn RIGHT to ERN VOR, turn RIGHT, intercept ERN R-003, then join airway.
ORHAN 1B		Climb on ERN R-103 to D20.0 ERN, turn RIGHT to ERN VOR, turn RIGHT, intercept ERN R-003, then join airway.
ORHAN 1E	28	Climb on ERN R-295 to D13.0 ERN, turn RIGHT to ERN VOR, turn LEFT, intercept ERN R-003, then join airway.

Apt Elev
3791'

Trans level: By ATC Trans alt: 15000'



ORHAN 1C [ORHA1C]
ORHAN 1D [ORHA1D]
ORHAN 1F [ORHA1F]
DEPARTURES
BASED ON VOR



These SIDs require minimum climb gradients of

ORHAN 1C
437' per NM (7.2%) until crossing 18000'.

ORHAN 1D
304' per NM (5%) until crossing 18000'.

ORHAN 1F
365' per NM (6%) until crossing 18000'.

Gnd speed-KT	75	100	150	200	250	300
437' per NM	547	729	1094	1458	1823	2187
365' per NM	456	608	911	1215	1519	1823
304' per NM	380	506	760	1013	1266	1519

SID	RWY	ROUTING
ORHAN 1C	10	Climb on ERN R-103 to 9000', turn RIGHT to ERN VOR, turn RIGHT, intercept ERN R-003, then join airway.
ORHAN 1D		Climb on ERN R-103 to 10000', turn RIGHT to ERN VOR, turn RIGHT, intercept ERN R-003, then join airway.
ORHAN 1F	28	Climb on ERN R-295 to 8200', turn RIGHT to ERN VOR, turn LEFT, intercept ERN R-003, then join airway.