

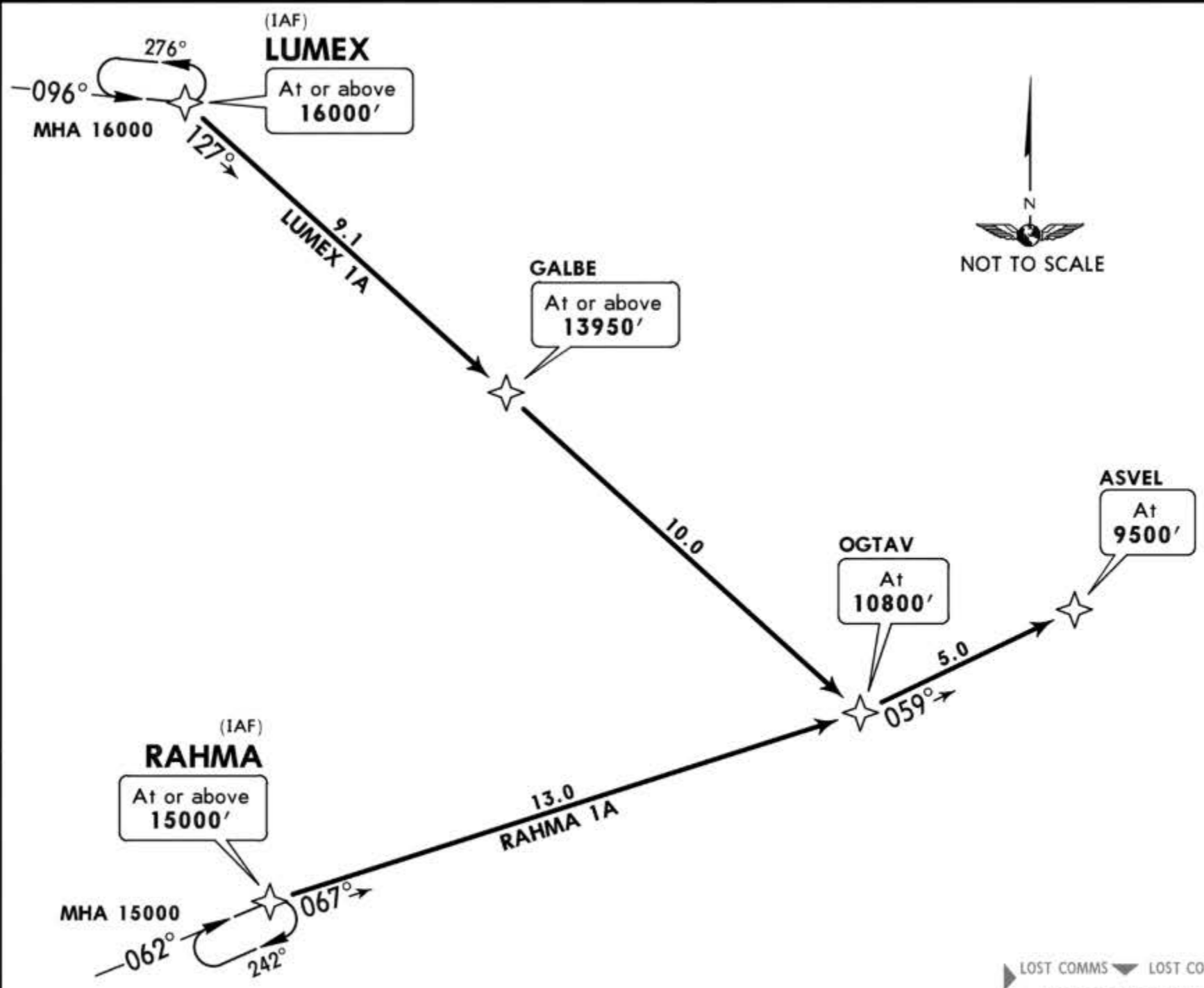
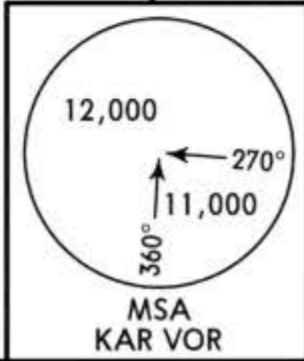
Apt Elev  
5889'

Alt Set: hPa Trans level: By ATC Trans alt: 12000'  
1. RNAV (GNSS).  
2. RNP 1 required, otherwise advise ATC.  
3. Descend as cleared.

KARS  
D 113.8 KAR  
N40 33.4 E043 06.2



LUMEX 1A [LUMEX1A]  
RAHMA 1A [RAHMA1A]  
RNAV ARRIVALS  
(RWY 06R)

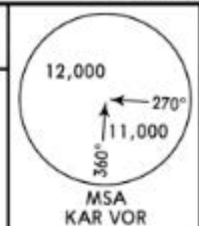


LOST COMMS ▼ LOST COMMS ▼ LOST COMMS ▼ LOST COMMS ▼ LOST COMMS  
 Proceed to LUMEX or RAHMA according to STAR being executed or to be executed. When required hold over these fixes until commencement of descent and execute RNAV Approach Procedure and land.  
 ▲ LOST COMMS ▲ LOST COMMS ▲ LOST COMMS ▲ LOST COMMS ▲ LOST COMMS

STAR	ROUTING
LUMEX 1A	LUMEX (16000'+) - GALBE (13950'+) - OGTAV (10800') - ASVEL (9500').
RAHMA 1A	RAHMA (15000'+) - OGTAV (10800') - ASVEL (9500').

Apt Elev  
5889'

Alt Set: hPa Trans level: By ATC Trans alt: 12000'



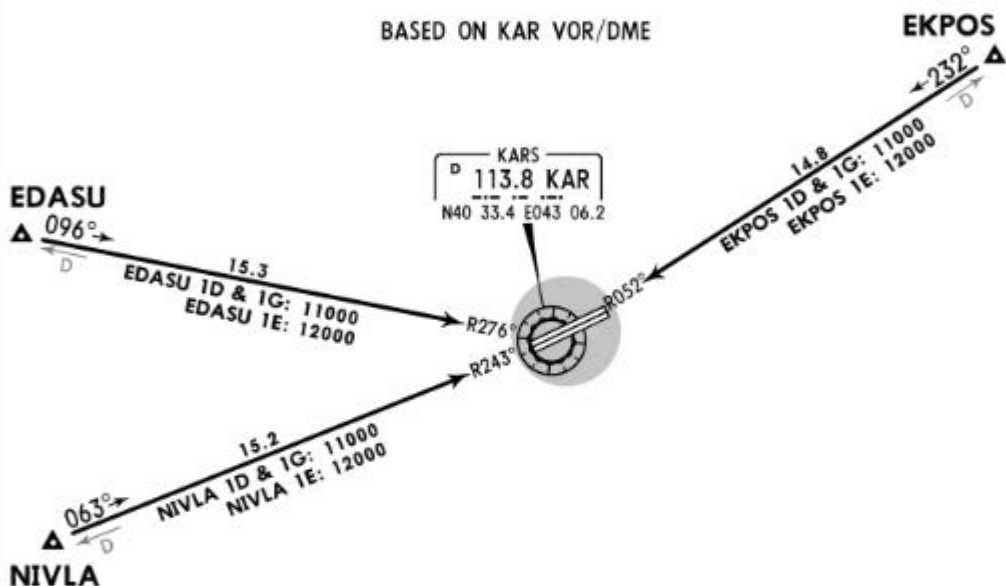
EDASU 1D [EDAS1D]  
EKPOS 1D [EKPO1D]  
NIVLA 1D [NIVL1D]  
(RWY 06R)

EDASU 1E [EDAS1E]  
EKPOS 1E [EKPO1E]  
NIVLA 1E [NIVL1E]  
(RWY 24L)

EDASU 1G [EDAS1G]  
EKPOS 1G [EKPO1G]  
NIVLA 1G [NIVL1G]  
(RWY 06L)

ARRIVALS

BASED ON KAR VOR/DME



LOST COMMS ▼ LOST COMMS ▼ LOST COMMS ▼ LOST COMMS ▼ LOST

Proceed to KAR VOR/NDB via Rwy 06R Arrivals.  
When required hold over this aid until commencement of descent and execute the Instrument Approach Procedure (IAP) and land.

▲ LOST COMMS ▲ LOST COMMS ▲ LOST COMMS ▲ LOST COMMS ▲

HOLDINGS OVER  
KAR VOR

Runway 06L

Runway 06R

Runway 24L

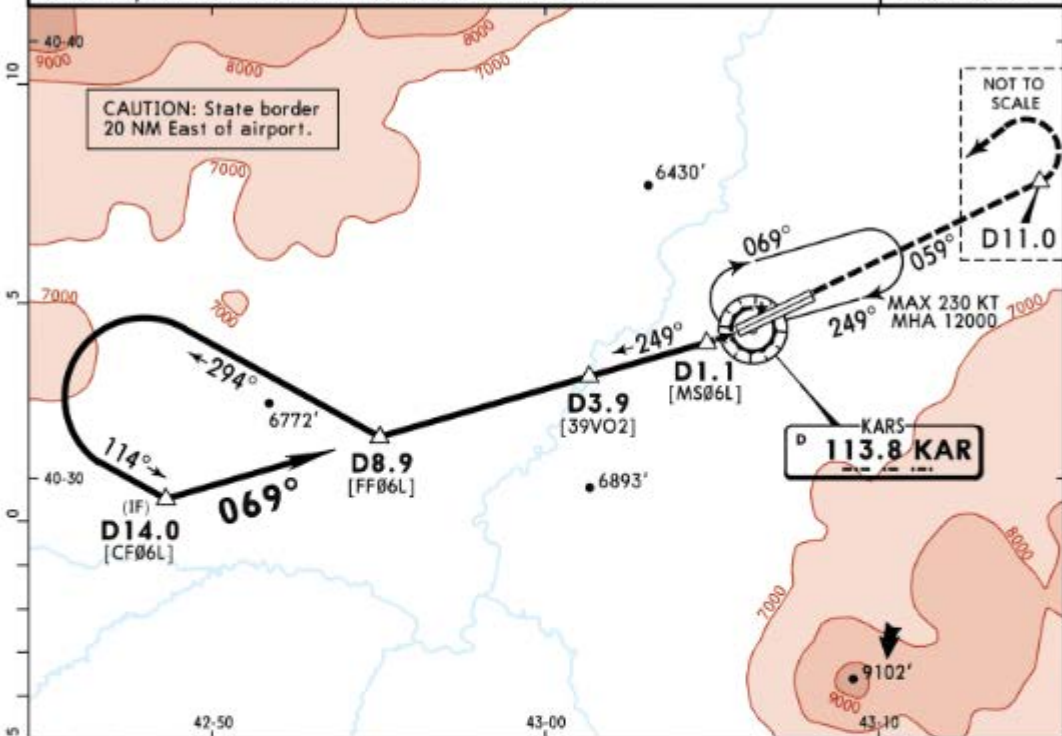


LTCF/KSY  
KARS HARAKANI

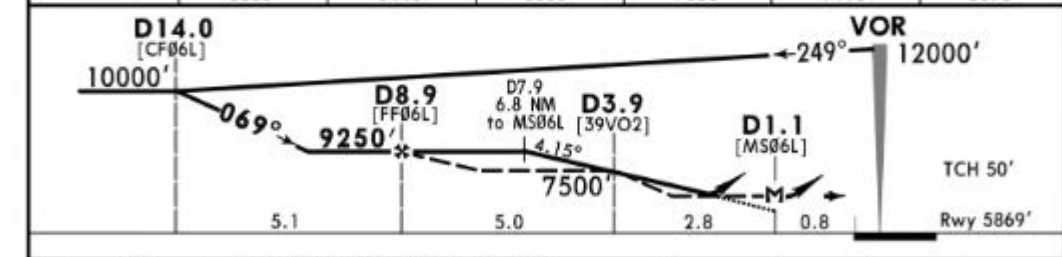
JEPPesen  
5 APR 19 (13-1)

KARS, TURKEY  
VOR Y Rwy 06L

BRIEFING STRIP	*KARS Approach		*KARS Tower		*Ground
	118.0	122.4	118.0	122.4	121.9
	VOR KAR <b>113.8</b>	Final Apch Crs <b>069°</b>	Minimum Alt <b>D8.9</b> 9250' (3381')	DA/MDA(H) <b>6500'</b> (631')	Apt Elev 5889' Rwy 5869'
	<b>MISSED APCH:</b> Climb on R-059 to 10000' to D11.0, then turn LEFT climbing to 12000' to VOR and hold.				
Alt Set: hPa		Rwy Elev: 197 hPa	Trans level: By ATC	Trans alt: 12000'	
1. DME required. 2. Procedure turn restricted to MAX 185 KT.					



KAR DME	7.0	6.0	5.0	4.0	3.0	2.0
ALTITUDE	8880'	8440'	8000'	7550'	7110'	6670'



Gnd speed-Kts	70	90	100	120	140	160	HEALS REEL PAPER	10000'	KAR on 113.8 R-059	D11.0
Descent Angle	4.15°	514	661	735	882	1029				

PANS OPS	STRAIGHT-IN LANDING RWY 06L				CIRCLE-TO-LAND 1			
	CDFA		non-CDFA		Max Kts	MDA(H)	VIS	
	DA/MDA(H) <b>6500'</b> (631')		MDA(H) <b>6500'</b> (631')					
	ALS out		ALS out		100	8500'	(2631')	1500m
	A	RVR 1500m	RVR 2700m	RVR 3100m	135	8500'	(2631')	1600m
B	RVR 2500m	RVR 2900m	RVR 2900m	RVR 3300m	180	8500'	(2631')	2400m
C	RVR 2500m	RVR 2900m	RVR 2900m	RVR 3300m	205	8500'	(2631')	3600m
D	RVR 2500m	RVR 2900m	RVR 2900m	RVR 3300m	205	8500'	(2631')	3600m

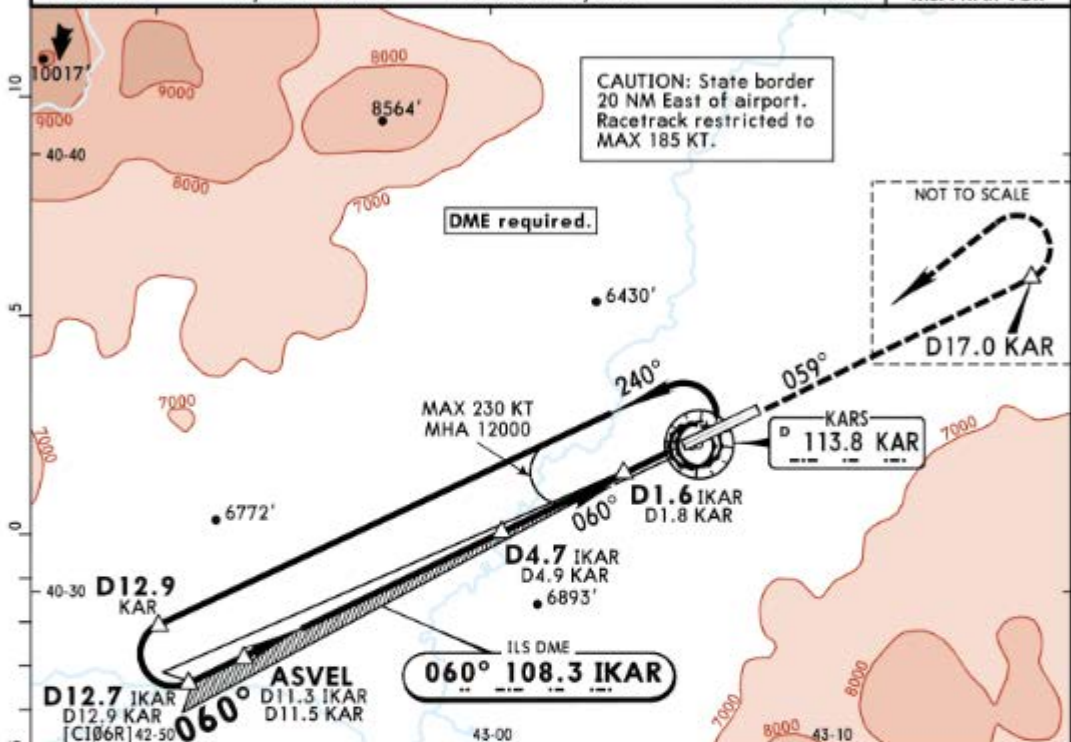
1 Circling height based on rwy 06L thresh elev of 5869'. 2 or higher straight-in minimums.

*KARS Approach		*KARS Tower		*Ground
118.0	122.4	118.0	122.4	121.9

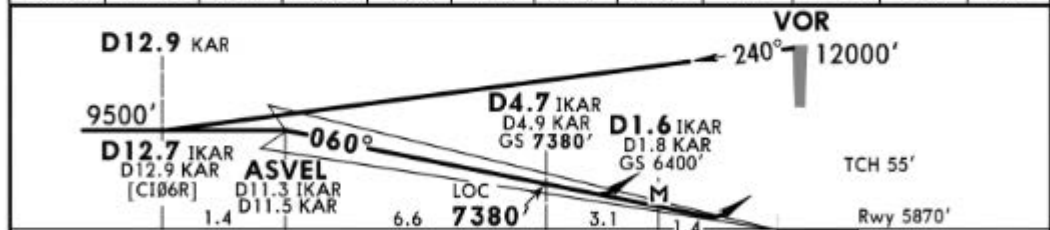
LOC IKAR <b>108.3</b>	Final Apch Crs <b>060°</b>	GS <b>D4.7 IKAR</b> 7380' (1510')	ILS DA(H) <b>6100'</b> (230')	Apt Elev 5889' Rwy 5870'	
--------------------------	-------------------------------	---	----------------------------------	-----------------------------	--

**MISSED APCH:** Climb on R-059 KAR to 8500' within D17.0 KAR, then turn LEFT climbing to 12000' to VOR and hold.

Alt Set: hPa Rwy Elev: 197 hPa Trans level: By ATC Trans alt: 12000' MSA KAR VOR



LOC (GS out)	IKAR DME	11.0	10.0	9.0	8.0	7.0	6.0	5.0	4.0	3.0	2.0
	ALTITUDE	9370'	9050'	8730'	8410'	8100'	7780'	7460'	7140'	6820'	6500'



Gnd Speed-Kts	70	90	100	120	140	160	HIALS REIL PAPI	8500' on 113.8 within KAR R-059	
ILS GS or LOC Descent Angle	3.00°	372	478	531	637	743			849
MAP at D1.6 IKAR/D1.8 KAR									

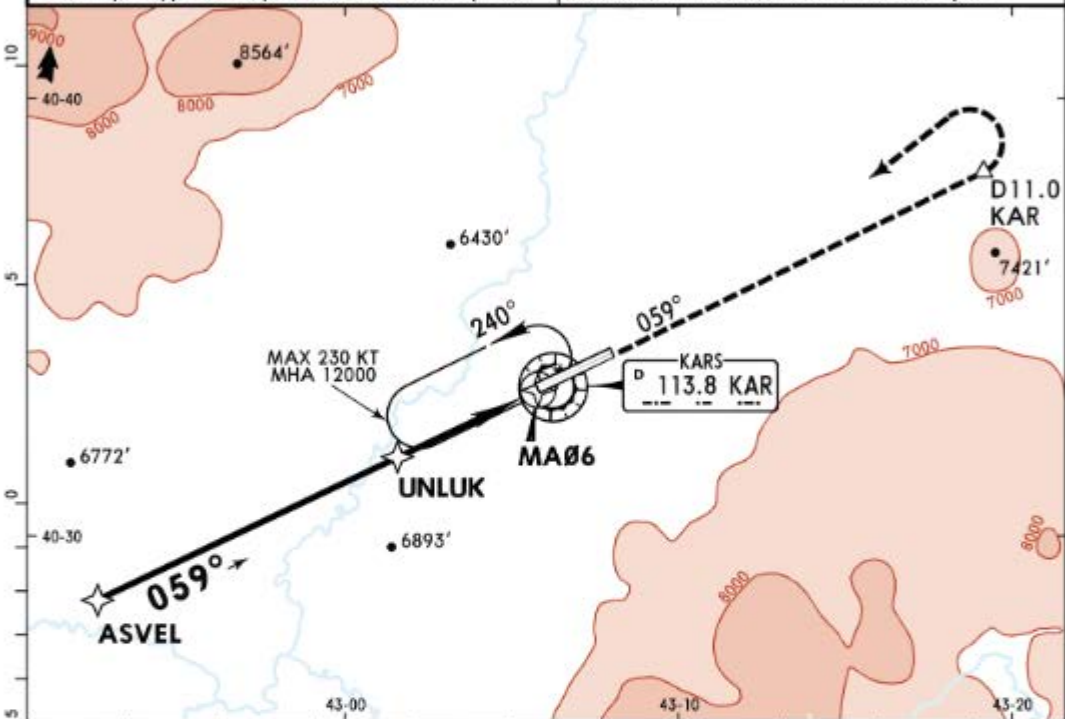
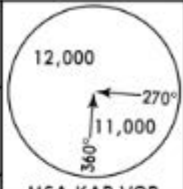
<b>Standard</b>		STRAIGHT-IN LANDING RWY 06R		CIRCLE-TO-LAND		
ILS		LOC (GS out)				
DA(H) <b>6100'</b> (230')		CDFA				
FULL		DA/MDA(H) <b>6400'</b> (530')				
ALS out		ALS out		Max Kts		
A		RVR 1500m		100	8500' (2611')	1500m
B				135	8500' (2611')	1600m
C	RVR 800m	RVR 1200m		180	8500' (2611')	2400m
D			RVR 2000m RVR 2400m	205	8500' (2611')	3600m

**LTCF/KSY**  
**KARS HAKAKANI**

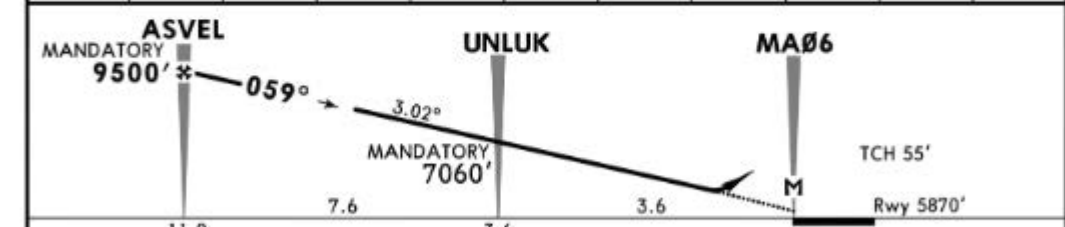
**JEPPESEN**  
25 JAN 19  
Eff 31 Jan (12-1)

**KARS, TURKEY**  
**RNAV (GNSS) Rwy 06R**

*KARS Approach 118.0 122.4		*KARS Tower 118.0 122.4		*Ground 121.9	
RNAV	Final Apch Crs <b>059°</b>	Mandatory Alt <b>ASVEL</b> <b>9500'</b> (3630')	LNAV DA/MDA(H) <b>6500'</b> (630')	Apt Elev 5889' Rwy 5870'	
<b>MISSED APCH:</b> Climb on R-059 KAR to 10000' until D11.0 KAR, then turn LEFT climbing to 12000' to KAR and hold.					
Alt Set: hPa		Rwy Elev: 197 hPa		Trans level: By ATC	
		Trans alt: 12000'		MSA KAR VOR	
1. RNP apch approval required. 2. VOR DME required.			CAUTION: State border 20 NM East of airport.		



DIST to THR	10.0	9.0	8.0	7.0	6.0	5.0	4.0	3.0	2.0	1.0
ALTITUDE	9128'	8807'	8486'	8165'	7845'	7524'	7203'	6882'	6561'	6241'



Gnd Speed-Kts	70	90	100	120	140	160	HIALS REIL PAP	10000' KAR on 113.8 R-059	D11.0 KAR
Descent Angle	3.02°	374	481	534	641	748			
MAP at MA06									

PANS OPS	<b>Standard</b> STRAIGHT-IN LANDING RWY 06R						CIRCLE-TO-LAND		
	LNAV CDFA								
	DA/MDA(H) <b>6500'</b> (630')								
	ALS out						Max Kts	MDA(H)	VIS
	A	RVR 1500m						100	8500' (2611')
B	RVR 1500m						135	8500' (2611')	1600m
C	RVR 2400m						180	8500' (2611')	2400m
D	RVR 2400m						205	8500' (2611')	3600m

CHANGES: RWY 06L/24R added.

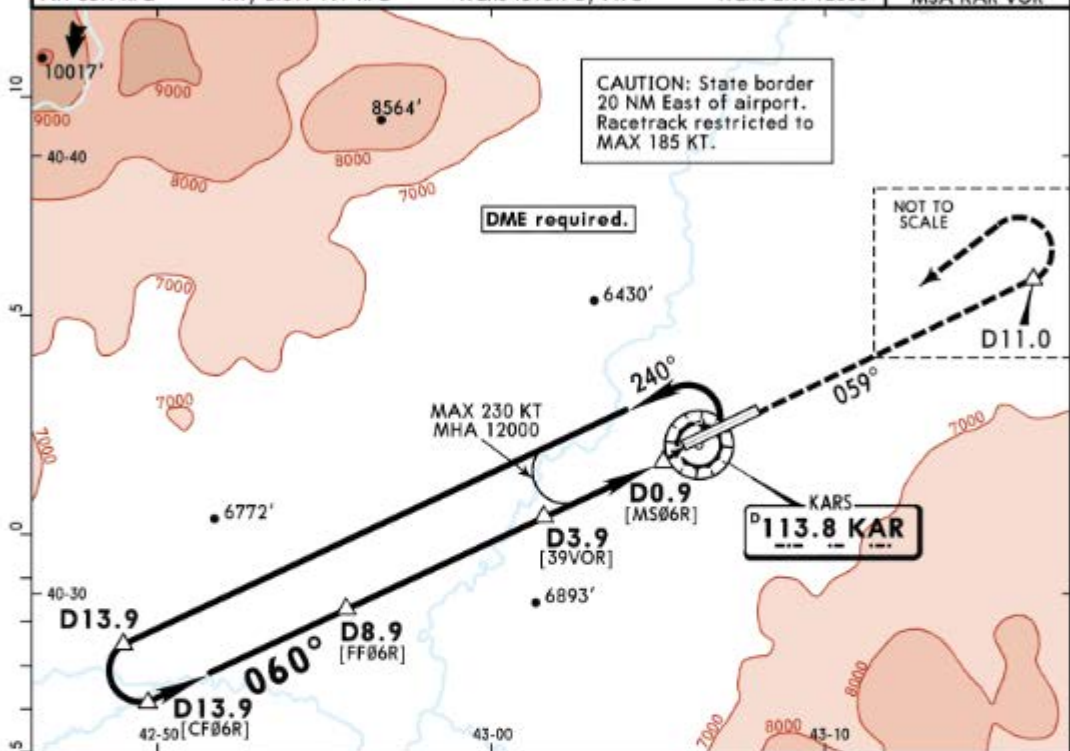
© JEPPESEN, 2018, 2019. ALL RIGHTS RESERVED.

LTCF/KSY  
KARS HARAKANI

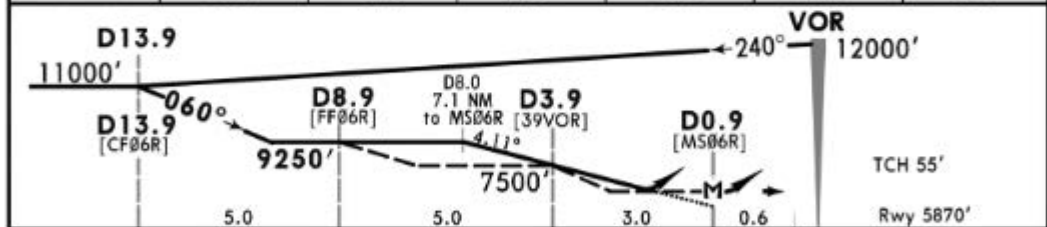
**JEPPESSEN**  
5 APR 19 **13-2**

**KARS, TURKEY**  
**VOR Z Rwy 06R**

*KARS Approach		*KARS Tower		*Ground	
118.0	122.4	118.0	122.4	121.9	
VOR KAR <b>113.8</b>	Final Apch Crs <b>060°</b>	Minimum Alt <b>D8.9</b> 9250' (3380')	DA/MDA(H) <b>6500'</b> (630')	Apt Elev 5889' Rwy 5870'	
<b>MISSED APCH: Climb on R-059 to 10000' to D11.0, then turn LEFT climbing to 12000' to VOR and hold.</b>					
Alt Set: hPa		Rwy Elev: 197 hPa		Trans level: By ATC	
				Trans alt: 12000'	
					MSA KAR VOR



KAR DME	7.0	6.0	5.0	4.0	3.0	2.0
ALTITUDE	8850'	8420'	7980'	7540'	7110'	6670'



Gnd speed-Kts	70	90	100	120	140	160	HIALS REIL PAP!	10000' KAR on 113.8 R-059 D11.0
Descent Angle	4.11°	509	655	728	873	1019		

MAP at D0.9 <b>Standard</b>				STRAIGHT-IN LANDING RWY 06R				CIRCLE-TO-LAND			
CDFA		non-CDFA		CDFA		non-CDFA		CDFA		non-CDFA	
DA/MDA(H)		6500' (630')		MDA(H)		6500' (630')		DA/MDA(H)		VIS	
ALS out		ALS out		ALS out		ALS out		Max Kts			
A	RVR 1500m		RVR 2700m		RVR 3100m		RVR 3100m		100	8500' (2611')	1500m
B	RVR 1500m		RVR 2700m		RVR 3100m		RVR 3100m		135	8500' (2611')	1600m
C	RVR 2500m		RVR 2900m		RVR 2900m		RVR 3300m		180	8500' (2611')	2400m
D	RVR 2500m		RVR 2900m		RVR 2900m		RVR 3300m		205	8500' (2611')	3600m

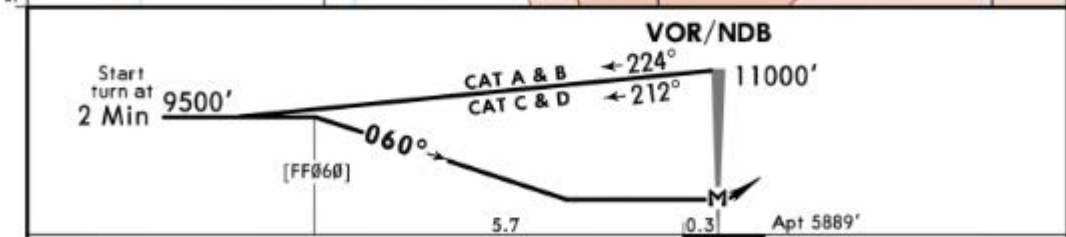
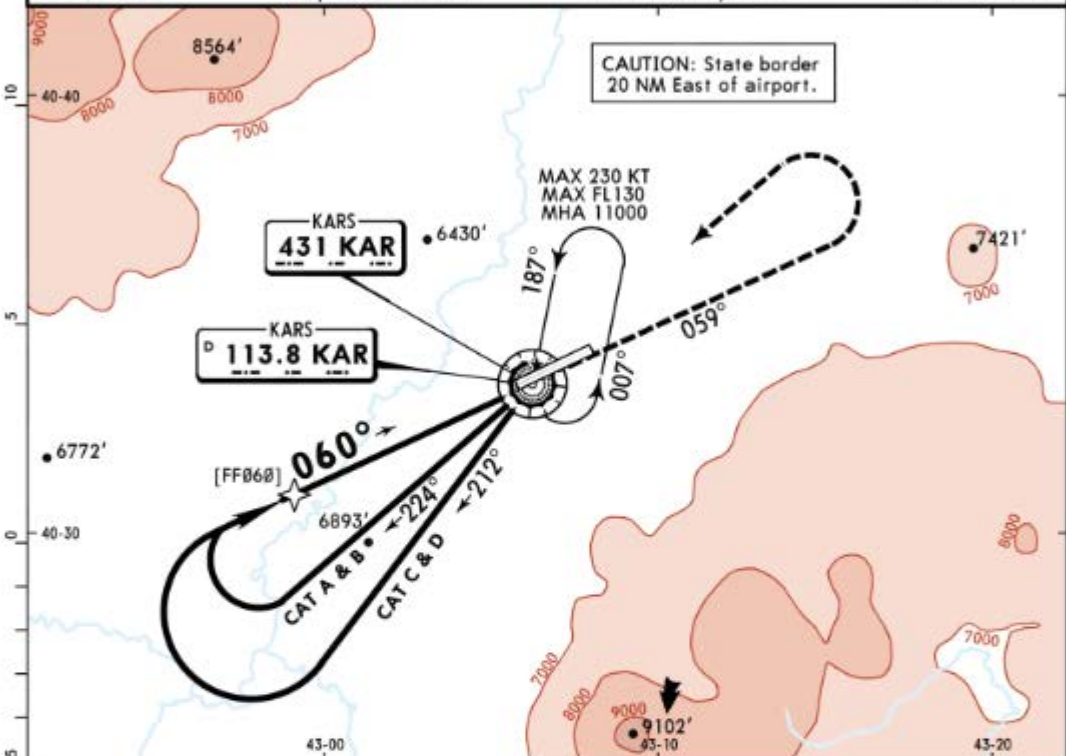
PANS OPS

1 or higher straight-in minimums.

CHANGES: None.

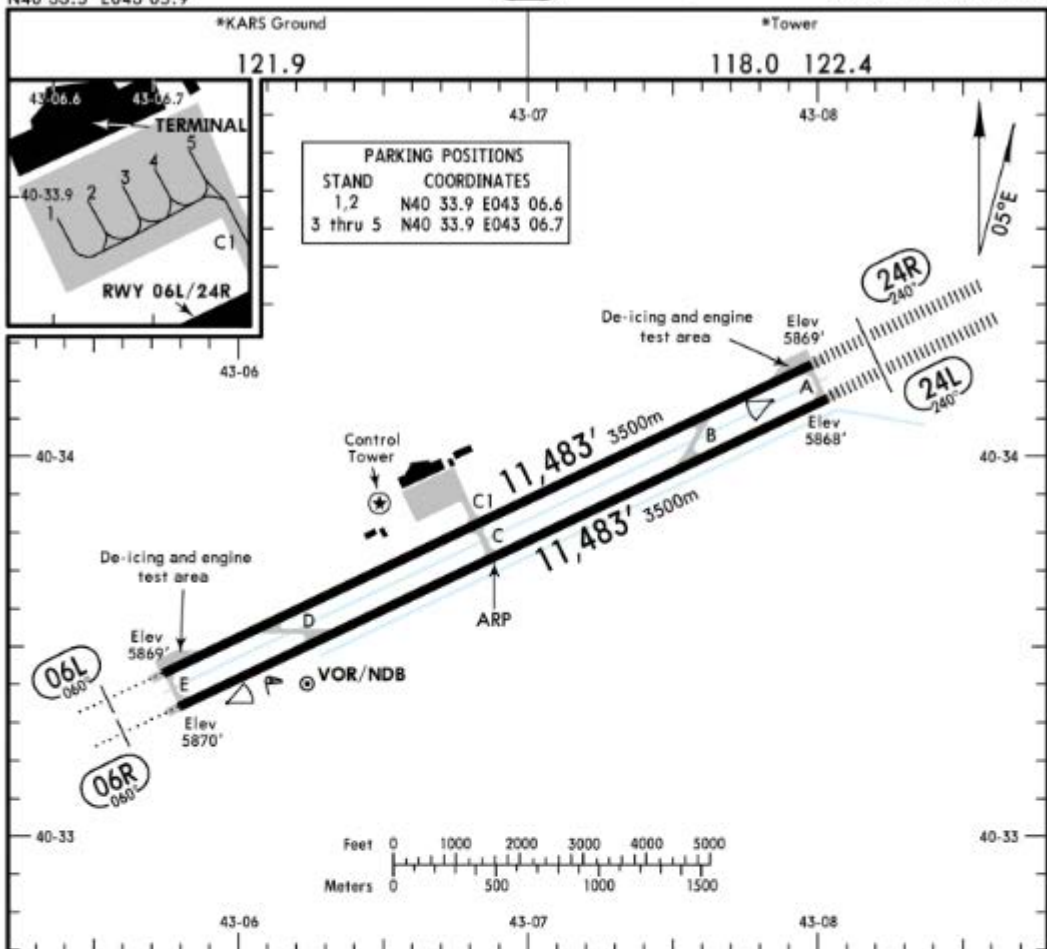
© JEPPESSEN, 2017, 2019. ALL RIGHTS RESERVED.

BRIEFING STRIP	*KARS Approach 118.0 122.4		*KARS Tower 118.0 122.4		*Ground 121.9
	VOR KAR <b>113.8</b>	Final Apch Crs <b>060°</b>	No FAF	MDA(H) <b>8500'</b> (2611')	Apt Elev 5889'
	NDB KAR <b>431</b>				
<p><b>MISSED APCH:</b> Climb on 059° to reach 10000' within 11NM from VOR/NDB, then turn LEFT climbing to 11000'. Proceed to VOR/NDB and hold.</p>					<p>MSA KAR VOR</p>
Alt Set: hPa		Apt Elev: 198 hPa		Trans level: By ATC	
					Trans alt: 12000'



MAP at VOR/NDB						Lighting-Refer to Airport Chart	Refer to Missed Apch above
----------------	--	--	--	--	--	---------------------------------	----------------------------

<b>Standard</b>		<b>CIRCLE-TO-LAND</b>	
	Max Kts	MDA(H)	VIS
A	100	<b>8500'</b> (2611')	1500m
B	135	<b>8500'</b> (2611')	1600m
C	180	<b>8500'</b> (2611')	2400m
D	205	<b>8500'</b> (2611')	3600m



**ADDITIONAL RUNWAY INFORMATION**

RWY	USABLE LENGTHS	LANDING BEYOND	TAKE-OFF	WIDTH
06L ① 24R	HIRL (60m) HIALS SFL REIL PAPI-L (3.0°) RVR			148' 45m
06R 24L	HIRL (60m) HIALS SFL REIL PAPI-L (3.0°) RVR	10,511' 3204m		148' 45m

① RWY is constructed as a RWY but used as TWY (emergency RWY).  
 RWY will be used as RWY if RWY 06R/24L is under construction.

**Standard**

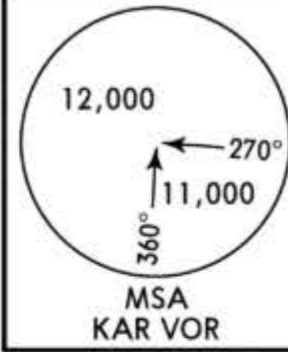
**TAKE-OFF**

	Low Visibility Take-off	Day: RL or RCLM Night: RL	Adequate vis ref (Day only)
A			
B			
C	RVR 300m	400m	500m
D			

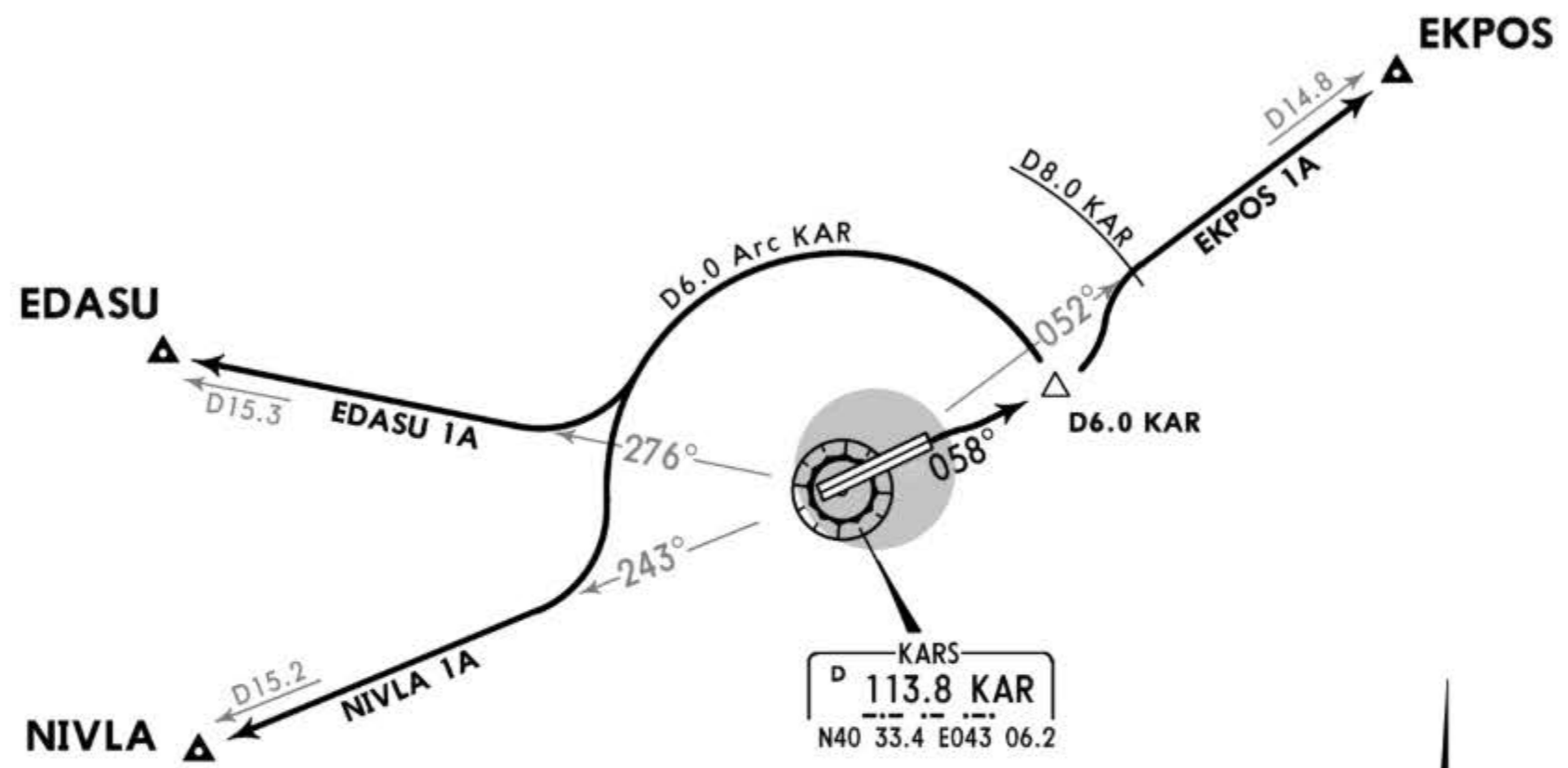


Apt Elev  
5889'

Trans level: By ATC Trans alt: 12000'



EDASU 1A [EDASTIA]  
EKPOS 1A [EKPO1A]  
NIVLA 1A [NIVL1A]  
DEPARTURES  
(RWY 06L/R)  
BASED ON KAR VOR/DME



KARS  
D 113.8 KAR  
N40 33.4 E043 06.2



**EKPOS 1A**

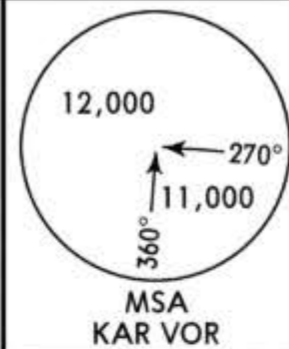
This SID requires a minimum climb gradient of 304' per NM (5.0%) until passing 15000'.

Gnd speed-KT	75	100	150	200	250	300
304' per NM	380	506	760	1013	1266	1519

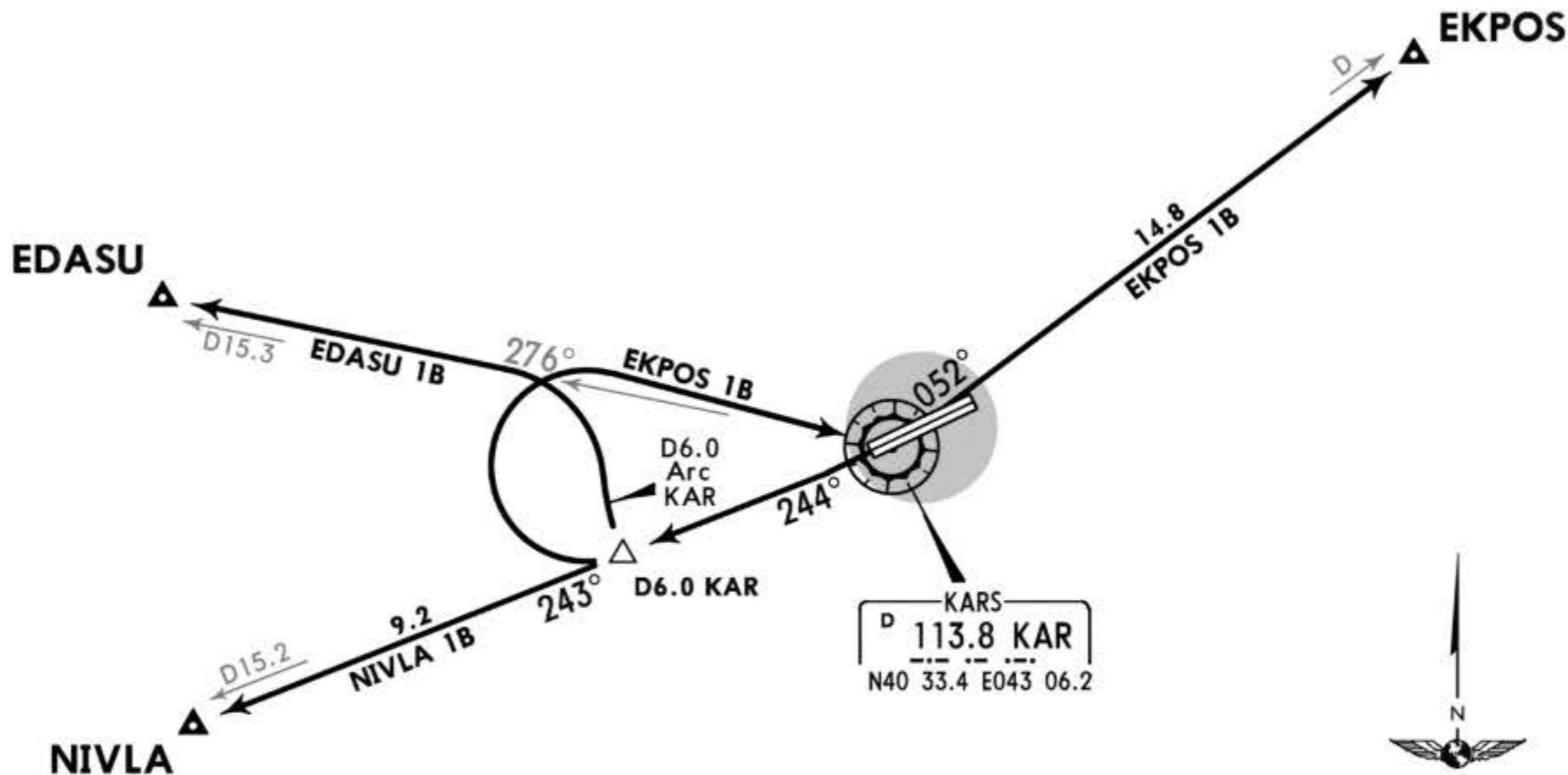
SID	ROUTING
EDASU 1A	Climb on KAR R-058 to D6.0 KAR, turn LEFT, along D6.0 Arc KAR, intercept KAR R-276 to EDASU, join airway.
EKPOS 1A	Climb on KAR R-058 to D6.0 KAR, turn LEFT, intercept KAR R-052 within D8.0 to EKPOS, join airway.
NIVLA 1A	Climb on KAR R-058 to D6.0 KAR, turn LEFT, along D6.0 Arc KAR, intercept KAR R-243 to NIVLA, join airway.

Apt Elev  
5889'

Trans level: By ATC Trans alt: 12000'



EDASU 1B [EDAS1B]  
EKPOS 1B [EKPO1B]  
NIVLA 1B [NIVL1B]  
DEPARTURES  
(RWY 24L/R)  
BASED ON KAR VOR/DME



These SIDs require a minimum climb gradient of 219' per NM (3.6%)  
**EDASU 1B:** until EDASU.  
**EKPOS 1B:** until until passing 15000'.  
**NIVLA 1B:** until NIVLA.

Gnd speed-KT	75	100	150	200	250	300
219' per NM	273	365	547	729	911	1094

SID	ROUTING
EDASU 1B	Climb on KAR R-244 to D6.0 KAR, turn RIGHT, along D6.0 Arc KAR, intercept KAR R-276 to EDASU, join airway.
EKPOS 1B	Climb on KAR R-244 to D6.0 KAR, turn RIGHT to KAR VOR, KAR R-052 to EKPOS, join airway.
NIVLA 1B	Climb on KAR R-244 to D6.0 KAR, turn LEFT, intercept KAR R-243 to NIVLA, join airway.