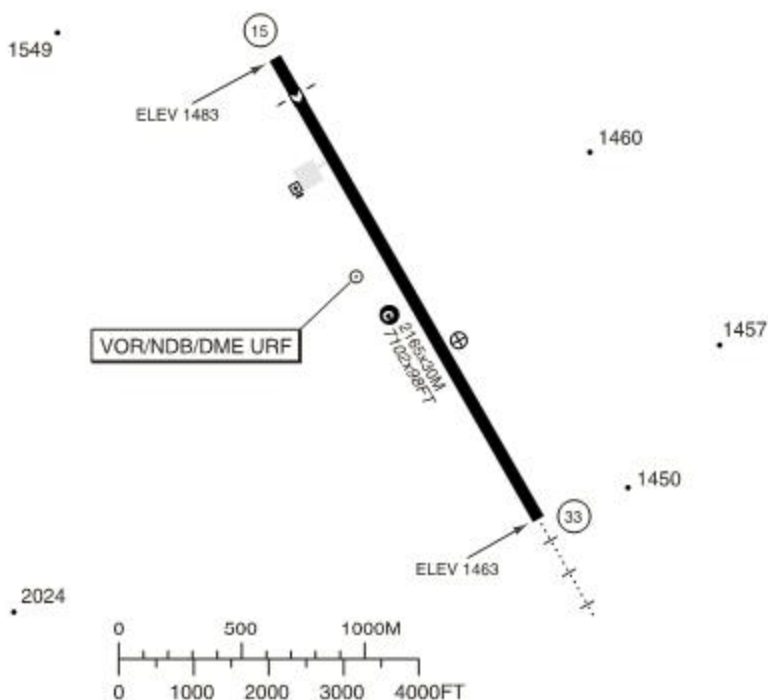


| RWY | QFU | APL | THL | RWL | SLOPE |
|-----|-------|-------|-----|-----|-------|
| 15 | (146) | - a | L | L | - 0.3 |
| 33 | (326) | L-E b | L | L | +0.3 |
| | | | | | |
| | | | | | |

- a PAPI 3.00
 b 450M, PAPI 3.00
 c Avbl length LDG RWY 05 1965M/6446FT.

S
A
N
L
I
U
R
F
A

T
U
R
K
E
Y

| | | |
|------|-------------------|-------|
| TKOF | RWY | 15/33 |
| | CLG/RVR or VIS KM | 0/0.5 |

TWY RESTRICTION
 TWY B width 20M/65FT.

NAV RESTRICTION
 VOR/DME URF unusable:
 R090-R250 beyond 15NM
 R250-R300 beyond 30NM below 12000.

AD: See NOTAM
 RFF: CAT 7

| Circling | E of AD. |
|----------|-----------------|
| B | 2300/2.0 (817) |
| C | 2300/4.0 (817) |
| D | 2700/4.4 (1217) |

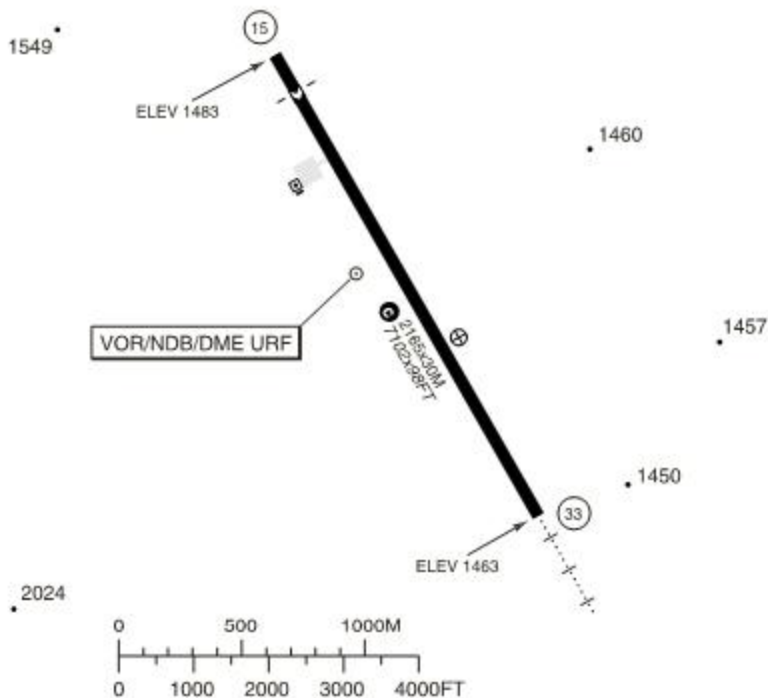
Change: New

S
A
N
L
I
U
R
F
A

T
U
R
K
E
Y

| RWY | QFU | APL | THL | RWL | SLOPE |
|-----|-------|--------------|-----|-----|-------|
| 15 | (146) | - a | L | L | - 0.3 |
| 33 | (326) | L-E b | L | L | +0.3 |
| | | | | | |
| | | | | | |

- a** PAPI 3.00
b 450M, PAPI 3.00
c Avbl length LDG RWY 05 1965M/6446FT.



| TKOF | RWY | |
|------|----------------|----|
| | CLG/RVR or VIS | KM |
| | 15/33 | |
| | 0/0.5 | |

TWY RESTRICTION
 TWY B width 20M/65FT.

NAV RESTRICTION
 VOR/DME URF unusable:
 R090-R250 beyond 15NM
 R250-R300 beyond 30NM below 12000.

AD: See NOTAM
 RFF: CAT 7

| Circling | E of AD. |
|----------|------------------------|
| B | 2300/2.0 (817) |
| C | 2300/4.0 (817) |
| D | 2700/4.4 (1217) |

Change: New

Sanliurfa
TWR 121.900 122.300 HAD

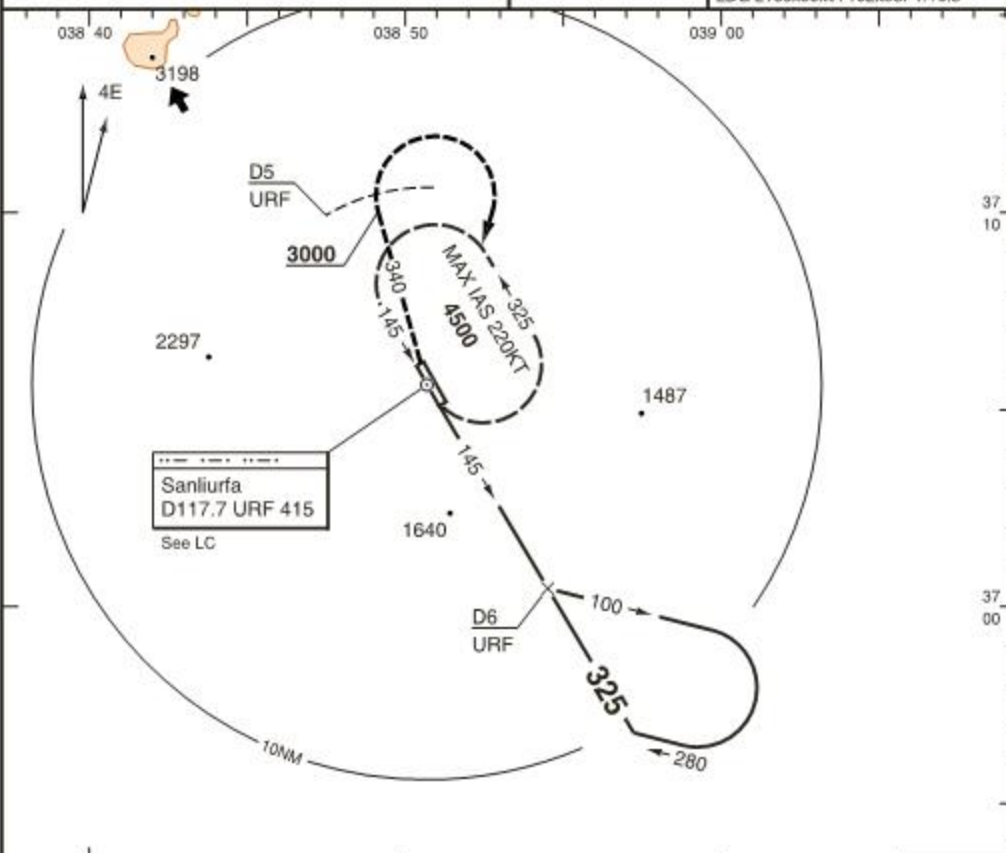
SFQ - LTCH 1 14 MAR 07

(VOR/DME) VOR - 33

PAPI 3.00

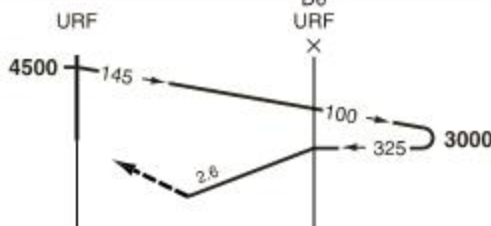
LDG 2165x30M/7102x98FT/±0.3

450M



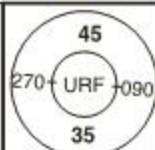
MAPt D2 URF TA 10000

Climb on R340 **D117.7 URF**
to **3000** within D5 **URF**, then
turn right to **URF** climbing
to **4500** and hold.

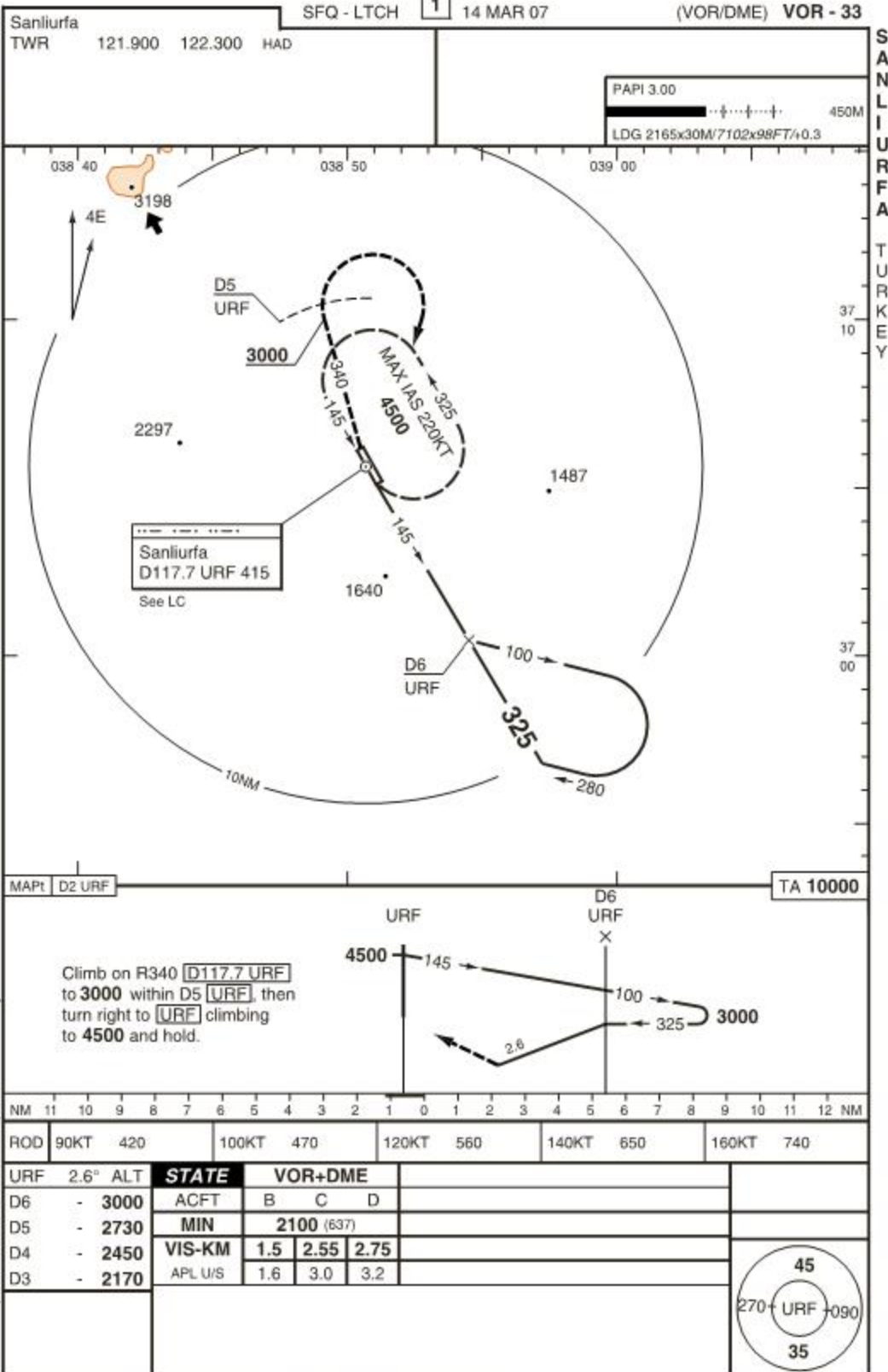


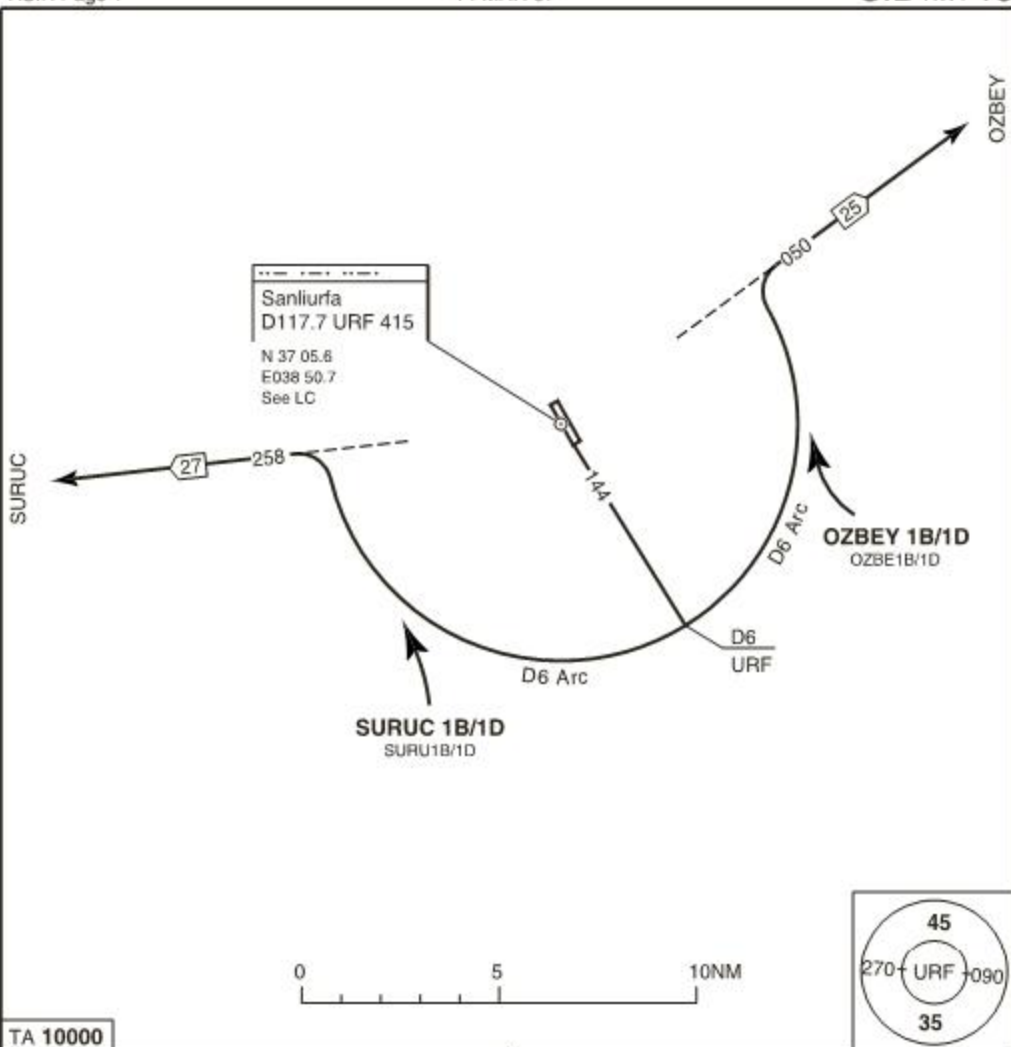
NM 11 10 9 8 7 6 5 4 3 2 1 0 1 2 3 4 5 6 7 8 9 10 11 12 NM

| URF | 2.6° ALT | GS/KT | ROD | STATE | VOR+DME | | |
|-----------|-------------|-------|-----|---------|------------|------|------|
| D6 | - 3000 | 90 | 420 | ACFT | B | C | D |
| D5 | - 2730 | 100 | 470 | MIN | 2130 (637) | | |
| D4 | - 2450 | 120 | 560 | VIS-KM | 1.5 | 2.55 | 2.75 |
| D3 | - 2170 | 140 | 650 | APL U/S | 1.6 | 3.0 | 3.2 |
| D2.8 :VOR | 2130 | 160 | 740 | | | | |



THR ELEV 1463 FT/AD ELEV 1483 FT Change: New





TA 10000

NOTE

1B SID - VOR/DME
1D SID - NDB/DME

INITIAL CLIMB

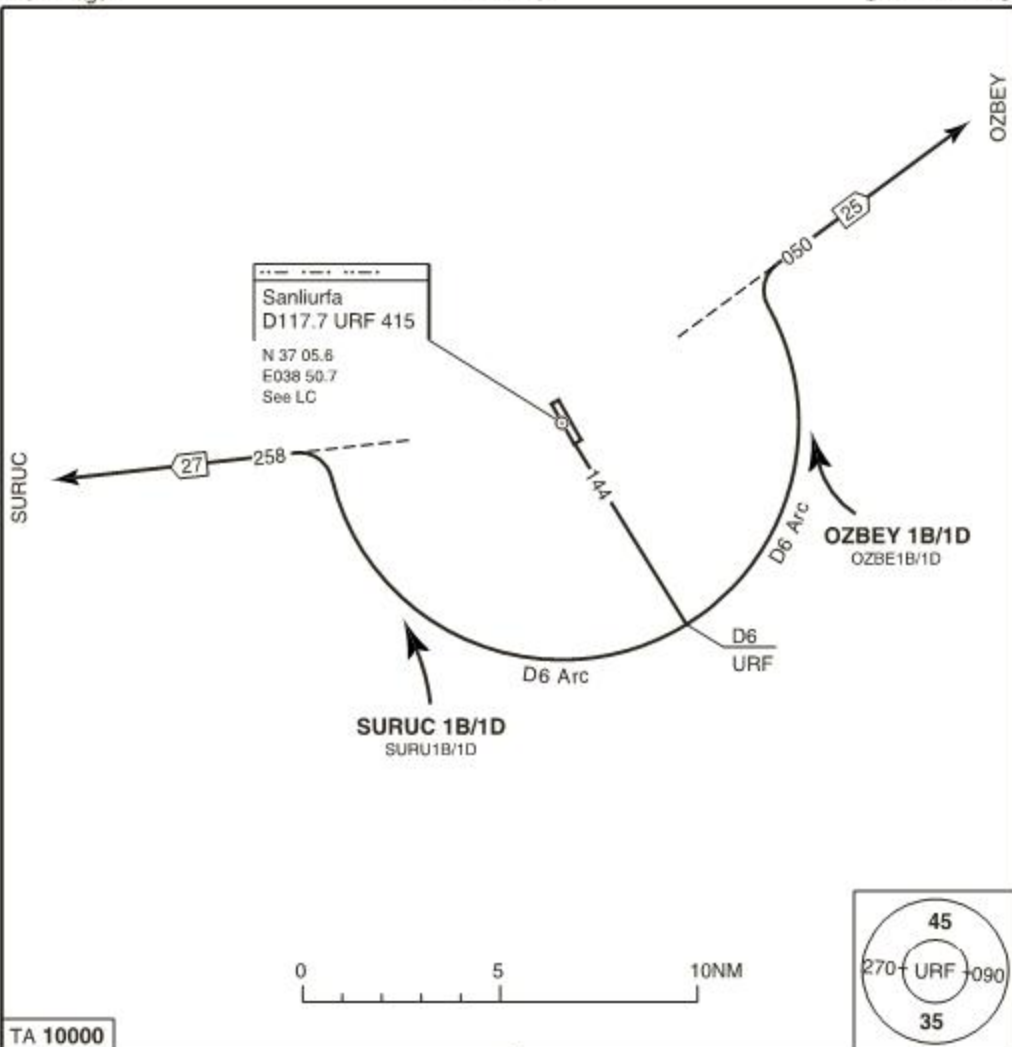
Climb on R144 (144° from) URF to D6 URF -
follow SID.

OZBEY 1B/1D

Turn L - D6 Arc - R050 (050° from) URF - OZBEY.

SURUC 1B/1D

Turn R - D6 Arc - R258 (258° from) URF - SURUC.

**NOTE**

1B SID - VOR/DME
1D SID - NDB/DME

INITIAL CLIMB

Climb on R144 (144° from) URF to D6 URF - follow SID.

OZBEY 1B/1D

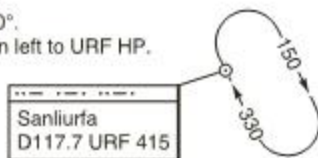
Turn L - D6 Arc - R050 (050° from) URF - OZBEY.

SURUC 1B/1D

Turn R - D6 Arc - R258 (258° from) URF - SURUC.

ENG FAIL

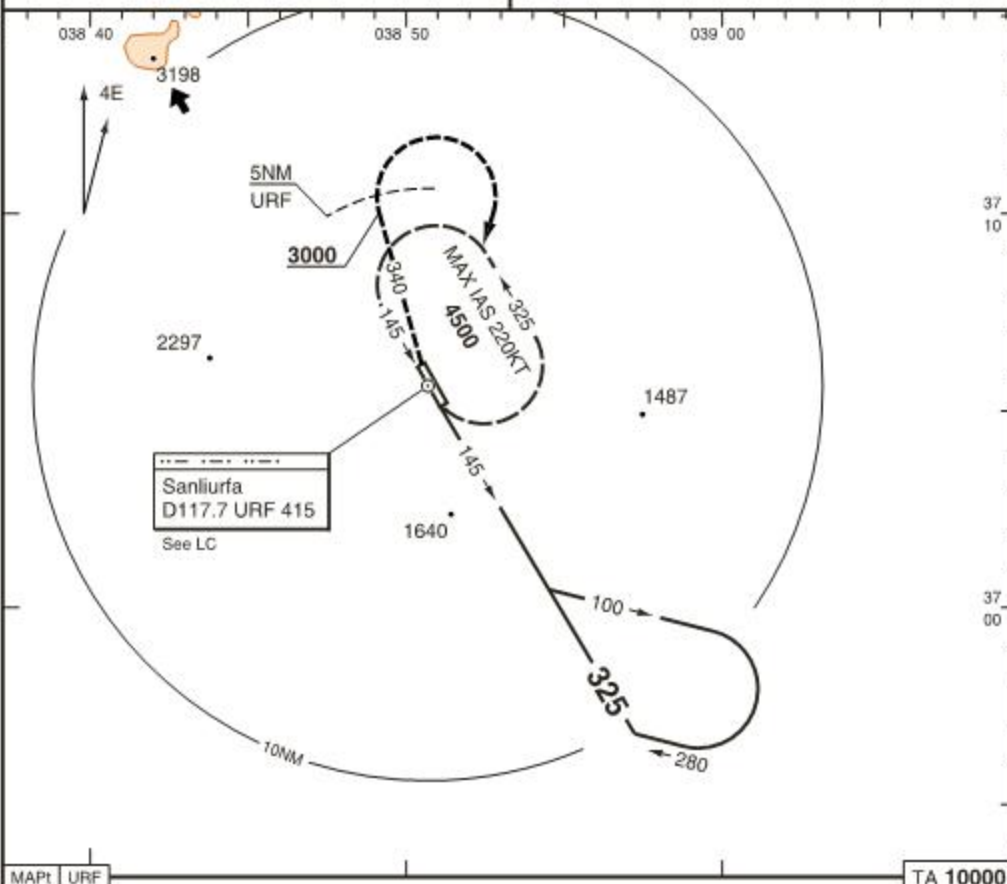
Climb on 150°.
At **2600** turn left to URF HP.



Sanliurfa
TWR 121.900 122.300 HAD

SFQ - LTCH 2 14 MAR 07

VOR - NDB - 325



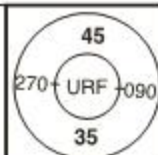
Climb on 340° to 3000 within
5NM from [117.7 URF 415],
then turn right to [URF] climbing
to 4500 and hold.



NM 11 10 9 8 7 6 5 4 3 2 1 0 1 2 3 4 5 6 7 8 9 10 11 12 NM

| STATE | VOR or NDB Circling X | | |
|---------|-----------------------|------------|-------------|
| ACFT | B | C | D |
| MIN | 2300 (817) | 2300 (817) | 2700 (1217) |
| VIS-KM | 2.0 | 4.0 | 4.4 |
| APL U/S | 2.0 | 4.0 | 4.4 |

X E of AD.



THR ELEV - FT/AD ELEV 1483 FT Change: New

FLIGHT SIMULATION USE ONLY

Sanliurfa
TWR 121.900 122.300 HAD

SFQ - LTCH 2 14 MAR 07

VOR - NDB - 325

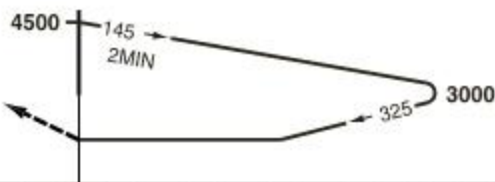
37
1037
00

MAPt URF

TA 10000

URF

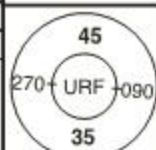
Climb on 340° to 3000 within
5NM from [117.7 URF 415],
then turn right to [URF] climbing
to 4500 and hold.



NM 11 10 9 8 7 6 5 4 3 2 1 0 1 2 3 4 5 6 7 8 9 10 11 12 NM

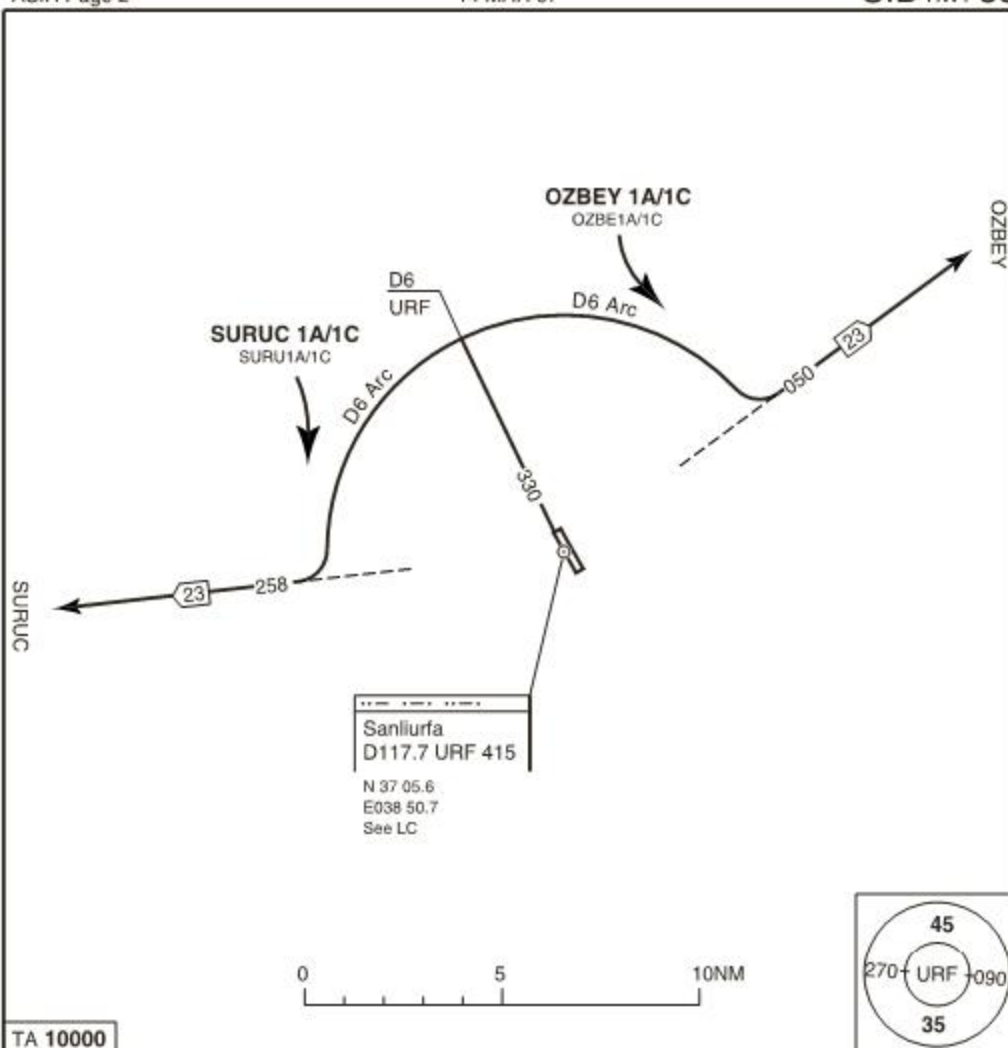
STATE VOR or NDB Circling **X**

| ACFT | B | C | D |
|---------------|------------|------------|-------------|
| MIN | 2300 (817) | 2300 (817) | 2700 (1217) |
| VIS-KM | 2.0 | 4.0 | 4.4 |
| APL U/S | 2.0 | 4.0 | 4.4 |

X E of AD.

THR ELEV - FT/AD ELEV 1483 FT Change: New

S
A
N
L
I
U
R
F
A

T
U
R
K
E
Y

TA 10000

NOTE

1A SID - VOR/DME
1C SID - NDB/DME

INITIAL CLIMB

Climb on R330 (330° from) URF to D6 URF - follow SID.

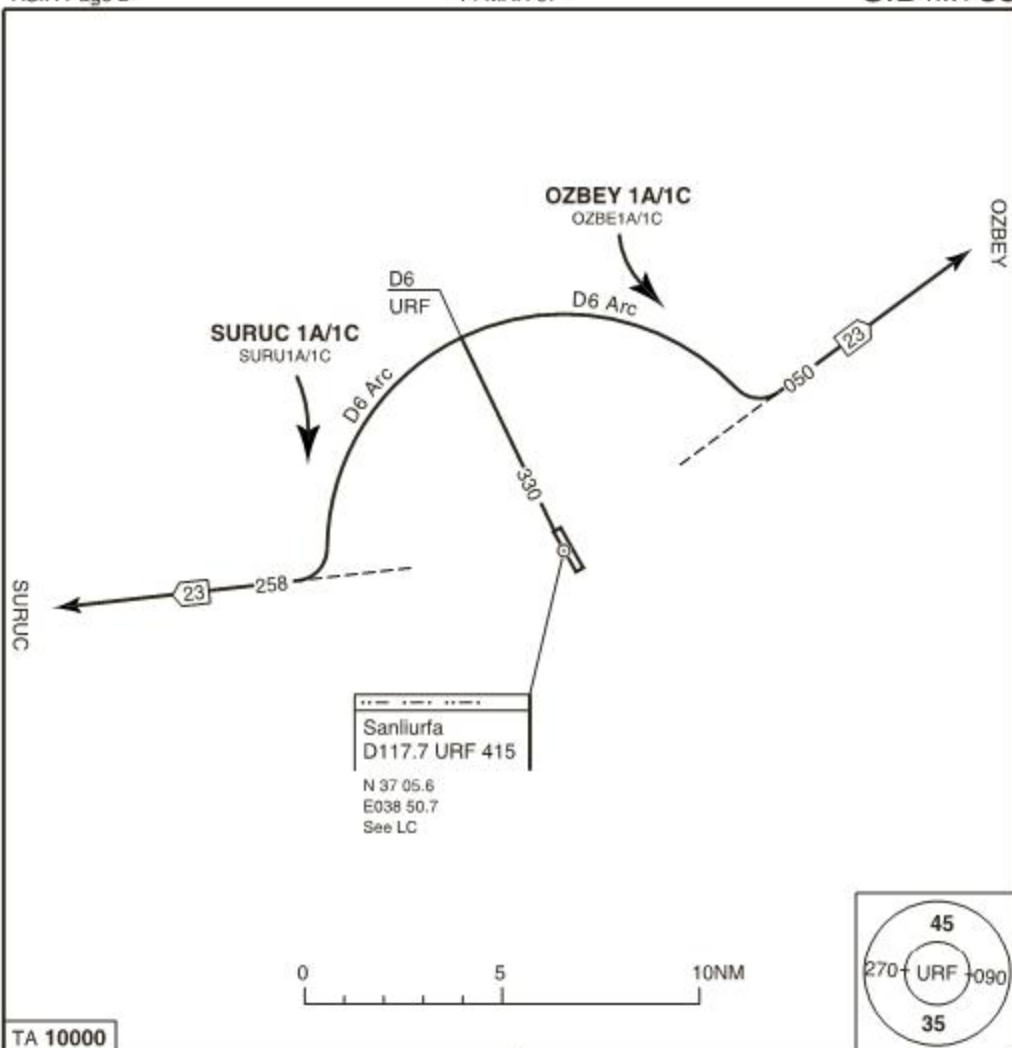
OZBEY 1A/1C

MNM CLIMB GRADIENT:
3.6% until intercept R050 (050° from) URF
Turn R - D6 Arc - R050 (050° from) URF - OZBEY.

SURUC 1A/1C

MNM CLIMB GRADIENT:
3.6% until intercept R258 (258° from) URF
Turn L - D6 Arc - R258 (258° from) URF - SURUC.

S
A
N
L
I
U
R
F
A

T
U
R
K
E
Y

TA 10000

NOTE

1A SID - VOR/DME
1C SID - NDB/DME

INITIAL CLIMB

Climb on R330 (330° from) URF to D6 URF - follow SID.

OZBEY 1A/1C

MNM CLIMB GRADIENT:
3.6% until intercept R050 (050° from) URF
Turn R - D6 Arc - R050 (050° from) URF - OZBEY.

SURUC 1A/1C

MNM CLIMB GRADIENT:
3.6% until intercept R258 (258° from) URF
Turn L - D6 Arc - R258 (258° from) URF - SURUC.

ENG FAIL

Climb on 330°.
At **2500** turn right to URF HP.

