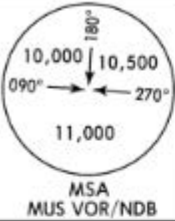
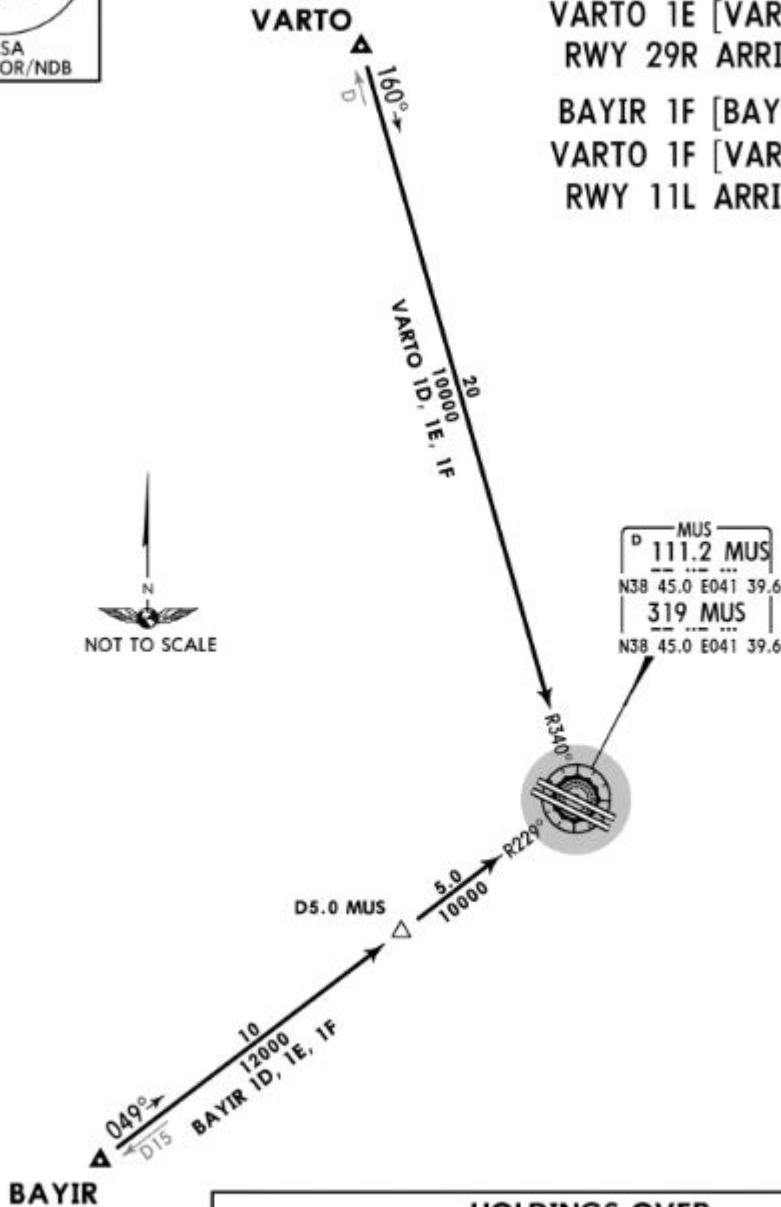


Apt Elev
4157'

Alt Set: hPa Trans level: By ATC Trans alt: 12000'



- BAYIR 1D [BAYI1D]
- BAYIR 1E [BAYI1E]
- VARTO 1D [VART1D]
- VARTO 1E [VART1E]
- RWY 29R ARRIVALS
- BAYIR 1F [BAYI1F]
- VARTO 1F [VART1F]
- RWY 11L ARRIVALS



HOLDINGS OVER MUS VOR/NDB

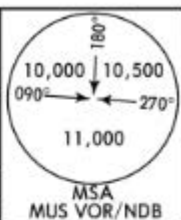


*MUS Tower (TWR/APP)

119.775 122.1

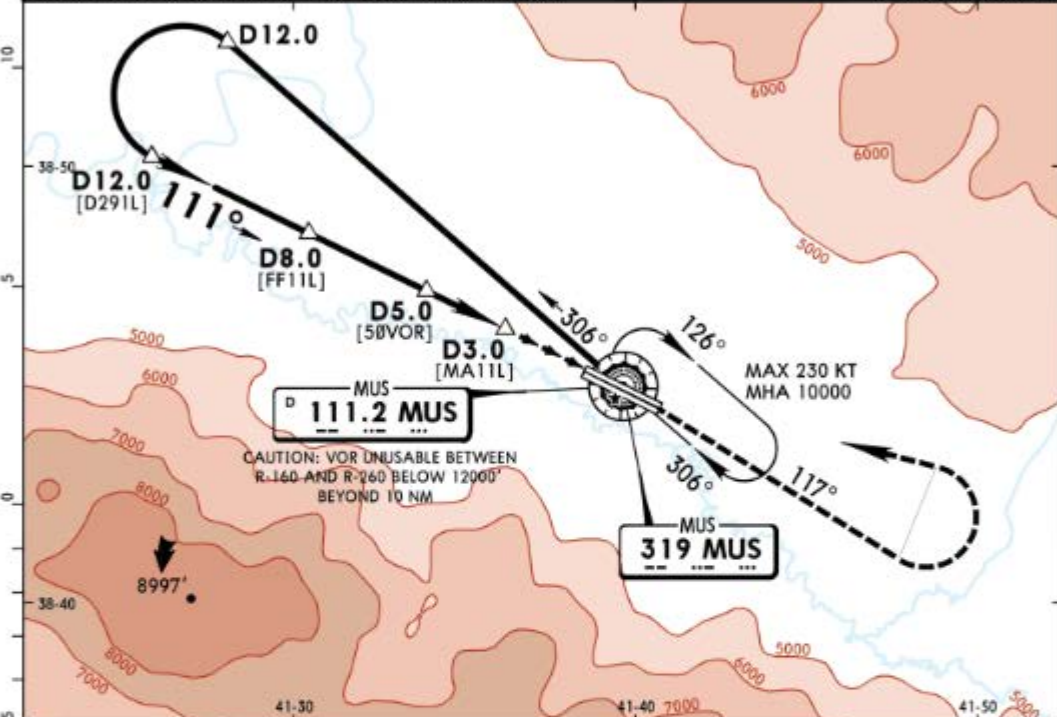
BRIEFING STRIP

VOR MUS 111.2	NDB MUS 319	Final Apch Crs 111°	Minimum Alt D8.0 6900' (2745')	DA/MDA(H) 4900' (745')	Apt Elev 4157' Rwy 4155'
----------------------------	--------------------------	----------------------------------	---	----------------------------------	-----------------------------

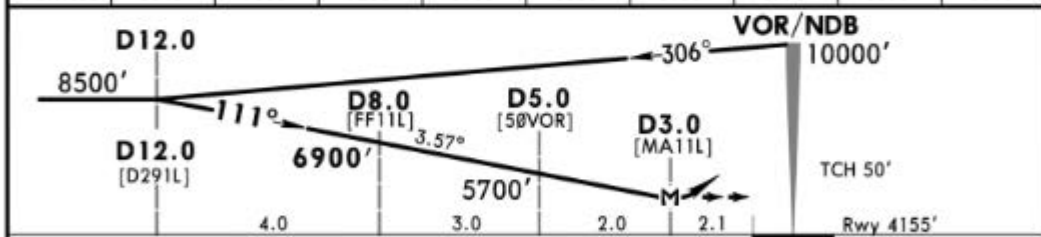


MISSED APCH: Climb to 7000' on 117° from VOR/NDB, then turn LEFT climbing to 10000' to VOR/NDB and hold.

Alt Set: hPa Rwy Elev: 143 hPa Trans level: By ATC Trans alt: 12000'
1. DME required. 2. Base turn restricted to MAX 185 KT.



MUS DME	11.0	10.0	9.0	8.0	7.0	6.0	5.0	4.0	3.0
ALTITUDE	8040'	7660'	7280'	6900'	6530'	6150'	5770'	5390'	5010'



Gnd speed-Kts	70	90	100	120	140	160	PAPI	7000' on 117° from 111.2/319
Descent Angle 3.57°	442	569	632	758	885	1011		
MAP at D3.0								

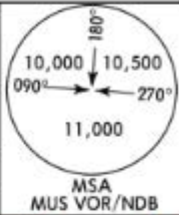
Standard		STRAIGHT-IN LANDING RWY 11L		CIRCLE-TO-LAND CAUTION: Not authorized South of airport	
		CDFA DA/MDA(H) 4900' (745')			
A		RVR 1500m		Max Kts 100	MDA(H) 5300' (1143') VIS 1500m
B				135	5300' (1143') 1600m
C				180	5300' (1143') 2400m
D		RVR 2400m		205	5520' (1363') 3600m

PANS OPS

*MUS Tower (TWR/APP)

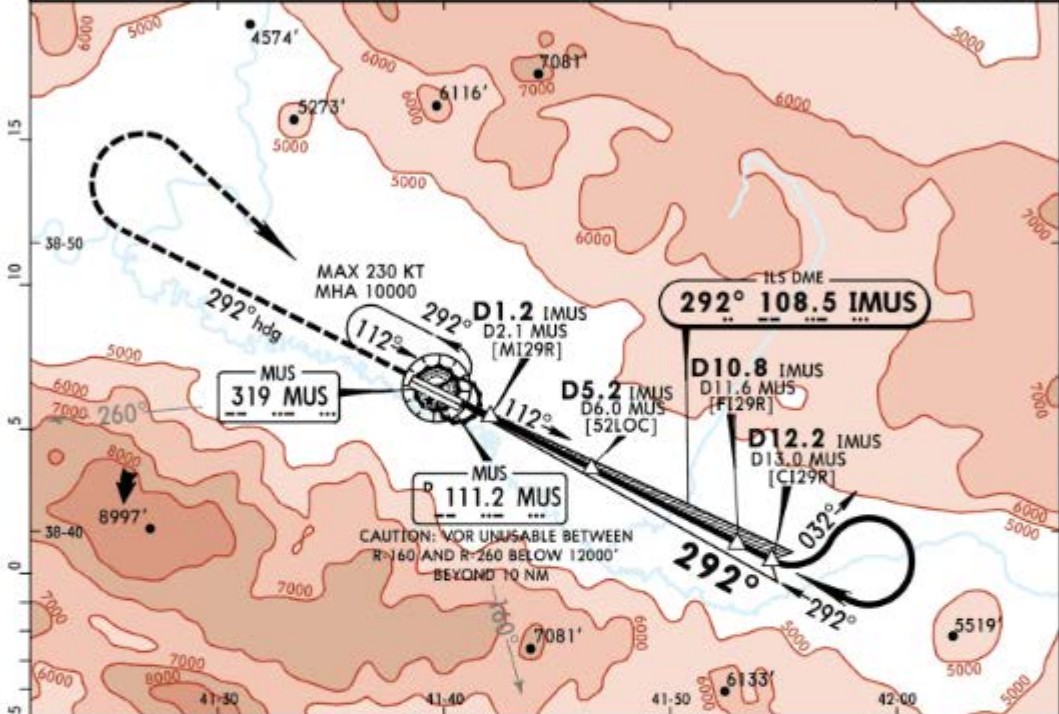
119.775 122.1

LOC IMUS 108.5	Final Apch Crs 292°	GS D5.2 IMUS 6034' (1877')	ILS DA(H) 4360' (203')	Apt Elev 4157' Rwy 4157'
-----------------------------	----------------------------------	---	-------------------------------------	-----------------------------

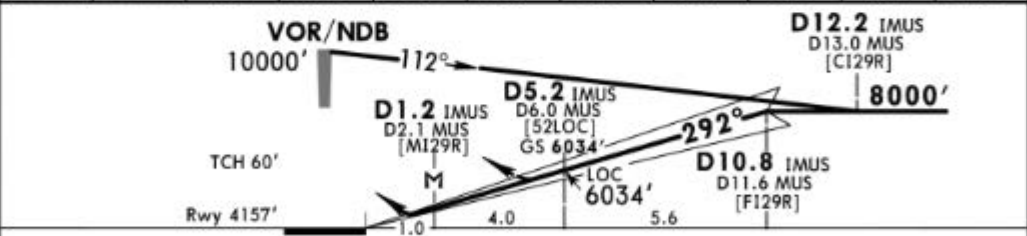


MISSED APCH: Climb to 7000' on heading 292° from VOR/NDB, then turn RIGHT climbing to 10000' to VOR/NDB and hold.

Alt Set: hPa Rwy Elev: 143 hPa Trans level: By ATC Trans alt: 12000'
1.DME required. 2. Procedure turn restricted to MAX 185 KT.



LOC	IMUS DME	2.0	3.0	4.0	5.0	6.0	7.0	8.0	9.0	10.0
(GS out)	ALTITUDE	4800'	5170'	5530'	5890'	6260'	6620'	6990'	7350'	7710'



Gnd speed-Kts	70	90	100	120	140	160	HIALS PAPI PAPI	7000'	292°	MUS				
ILS GS or LOC Descent Angle	3.40°	421	541	602	722	842					963	on	hdg	from
MAP at D1.2 IMUS/D2.1 MUS														111.2/ 319

PANS OPS	Standard ILS STRAIGHT-IN LANDING RWY 29R		LOC (GS out) CDFA		CIRCLE-TO-LAND CAUTION: Not authorized South of airport		
	DA(H) 4360' (203')		DA/MDA(H) 4600' (443')				
	FULL	ALS out	ALS out				
	A		RVR 1500m	Max Kts		MDA(H)	VIS
B			100	5300'	(1143')	1500m	
C	RVR 550m	RVR 1200m	RVR 1400m	135	5300'	(1143')	1600m
D			RVR 2100m	180	5300'	(1143')	2400m
				205	5520'	(1363')	3600m

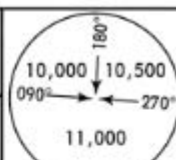
W/o HUD/AP/FD: RVR 750m.

*MUS Tower (TWR/APP)

119.775 122.1

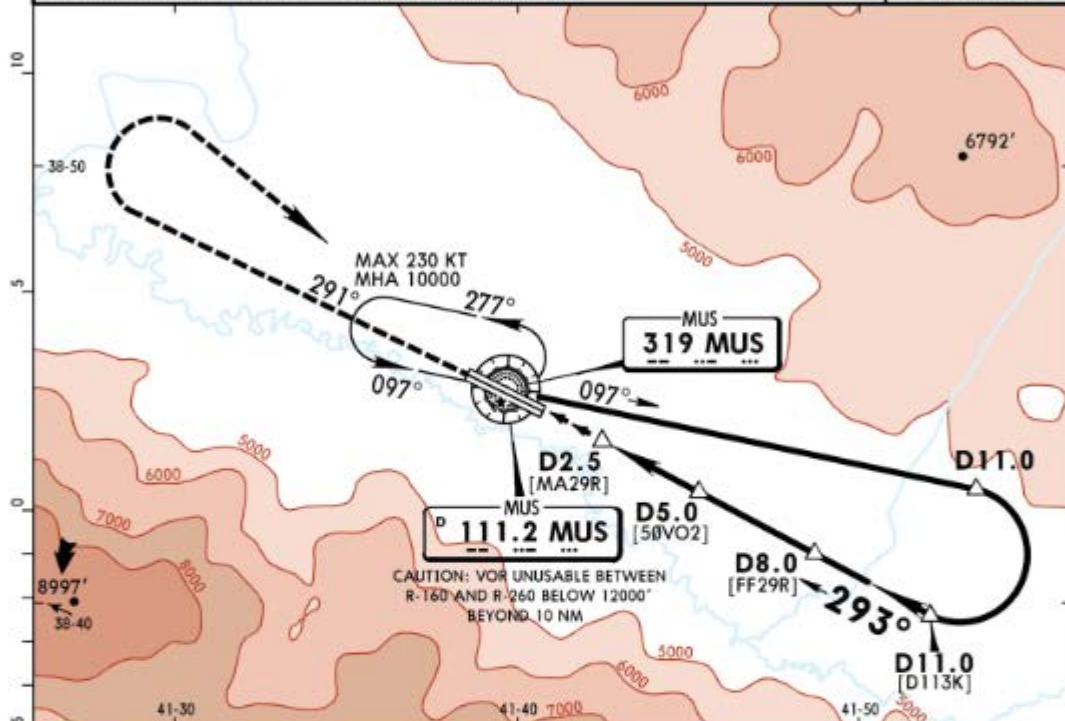
BRIEFING STRIP

VOR MUS 111.2	NDB MUS 319	Final Aph Crs 293°	Minimum Alt D8.0 6800' (2643')	DA/MDA(H) 4600' (443')	Apt Elev 4157' Rwy 4157'
-------------------------	-----------------------	---------------------------------	---	----------------------------------	-----------------------------

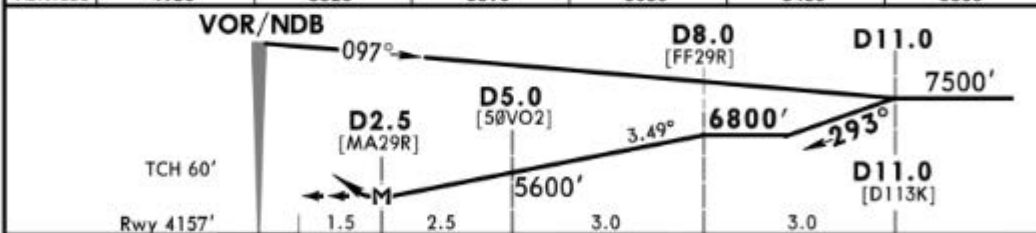


MISSED APCH: Climb to 7000' on 291° from VOR/NDB, then turn RIGHT climbing to 10000' to VOR/NDB and hold.

Alt Set: hPa Rwy Elev: 143 hPa Trans level: By ATC Trans alt: 12000'
1. DME required. 2. Base turn restricted to MAX 185 KT.



MUS DME	3.0	4.0	5.0	6.0	7.0	8.0
ALTITUDE	4950'	5320'	5690'	6060'	6430'	6800'



Gnd speed-Kts	70	90	100	120	140	160	HIALS PAPI PAPI	7000'	on 291° from MUS 111.2/ 319
Descent Angle	3.49°	432	556	618	741	865			

MAP at D2.5

Standard				STRAIGHT-IN LANDING RWY 29R			CIRCLE-TO-LAND CAUTION: Not authorized South of airport			
				CDFA						
				DA/MDA(H) 4600' (443')						
				ALS out			Max Kts			
A	RVR 1400m			RVR 1500m			100	5300'	(1143')	1500m
B							135	5300'	(1143')	1600m
C				RVR 2100m			180	5300'	(1143')	2400m
D							205	5520'	(1363')	3600m

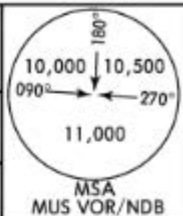
PANS OPS

*MUS Tower (TWR/APP)

119.775 122.1

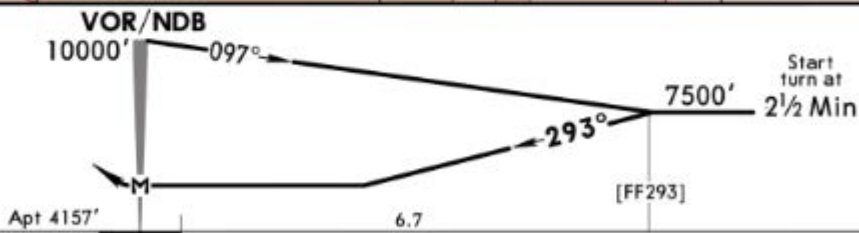
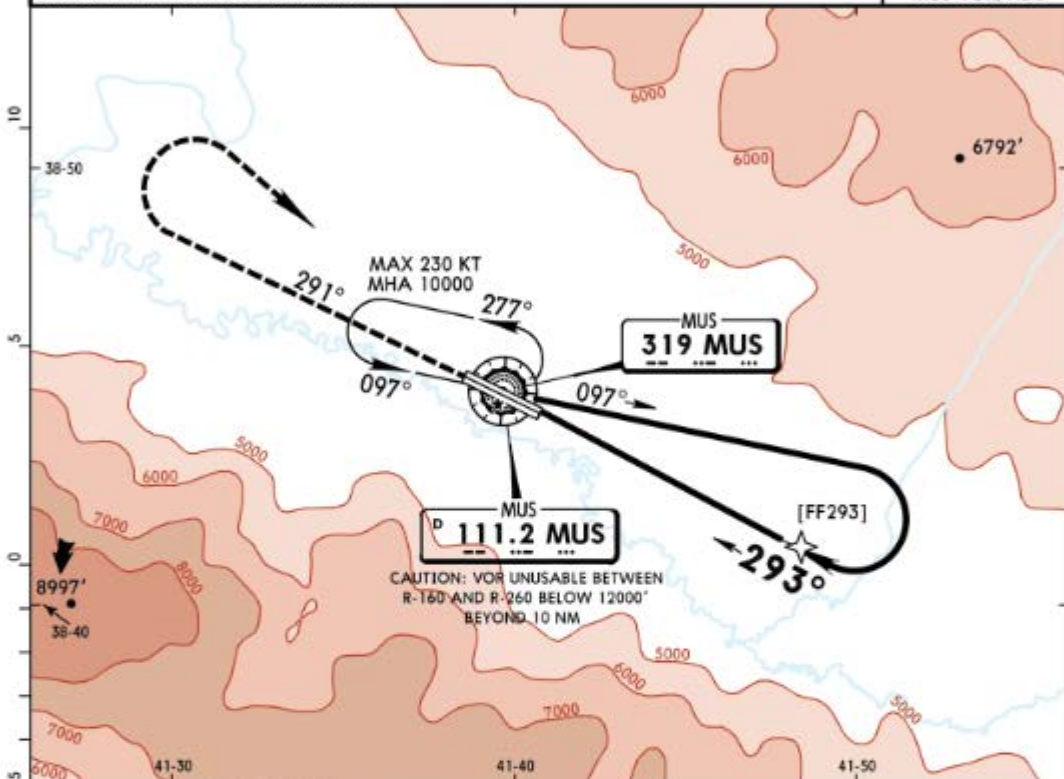
BRIEFING STRIP

VOR MUS 111.2	NDB MUS 319	Final Apch Crs 293°	No FAF	MDA(H) Refer to Minimums	Apt Elev 4157'
-------------------------	-----------------------	-------------------------------	--------	-----------------------------	----------------



MISSED APCH: Climb to 7000' on 291° from VOR/NDB, then turn RIGHT climbing to 10000' to VOR/NDB and hold.

Alt Set: hPa Apt Elev: 143 hPa Trans level: By ATC Trans alt: 12000'
Base turn restricted to MAX 185 KT.



MAP at VOR/NDB	Lighting - Refer to Airport Chart	7000'	MUS
		LT	on 291° from 111.2/319

Standard CIRCLE-TO-LAND

CAUTION: Not authorized South of airport

PANS OPS

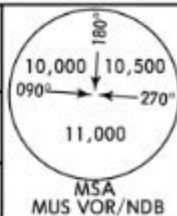
	Max Kts	MDA(H)	VIS
A	100	5300' (1143')	1500m
B	135	5300' (1143')	1600m
C	180	5300' (1143')	2400m
D	205	5520' (1363')	3600m

*MUS Tower (TWR/APP)

119.775 122.1

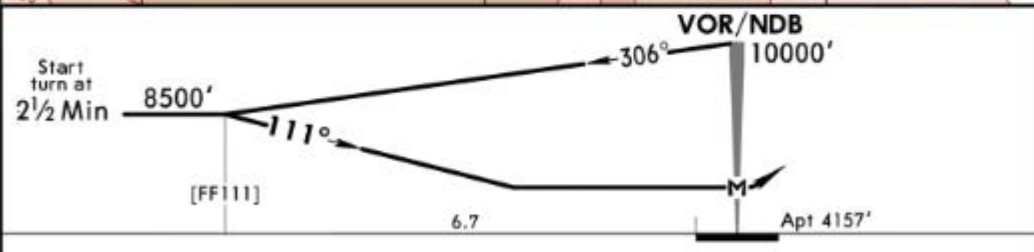
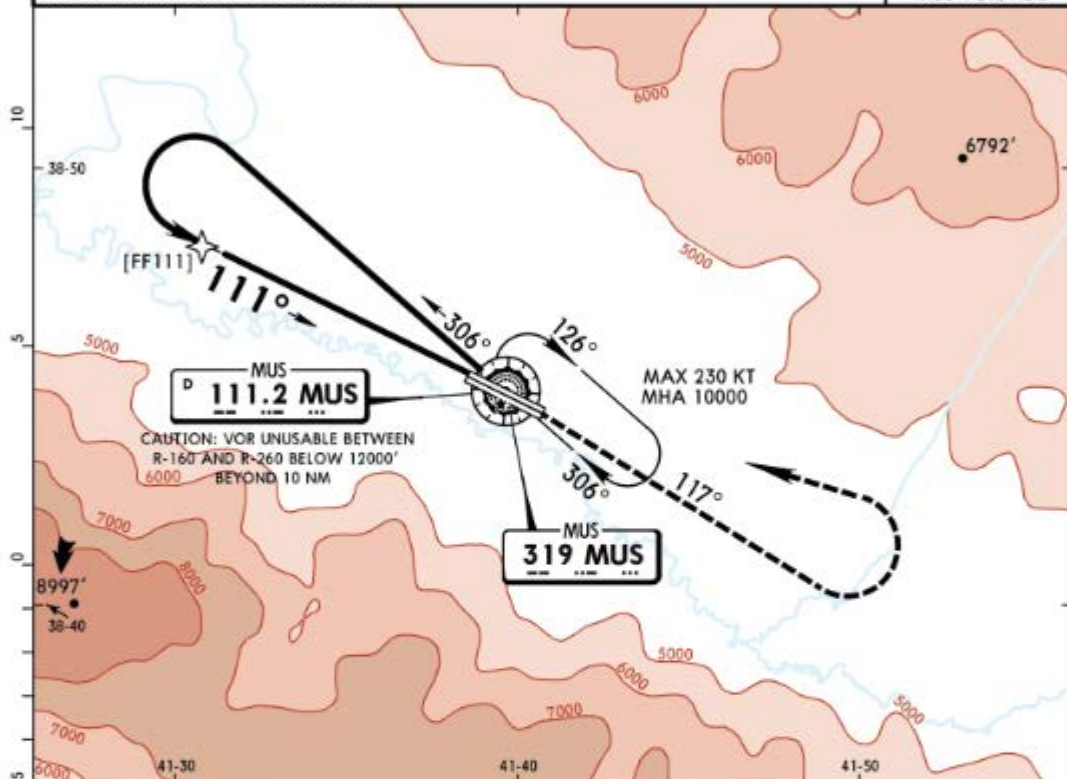
BRIEFING STRIP

VOR MUS 111.2	NDB MUS 319	Final Apch Crs 111°	No FAF	MDA(H) Refer to Minimums	Apt Elev 4157'
----------------------------	--------------------------	----------------------------------	--------	--------------------------------	----------------



MISSED APCH: Climb to 7000' on 117° from VOR/NDB, then turn LEFT climbing to 10000' to VOR/NDB and hold.

Alt Set: hPa Apt Elev: 143 hPa Trans level: By ATC Trans alt: 12000'
Base turn restricted to MAX 185 KT.



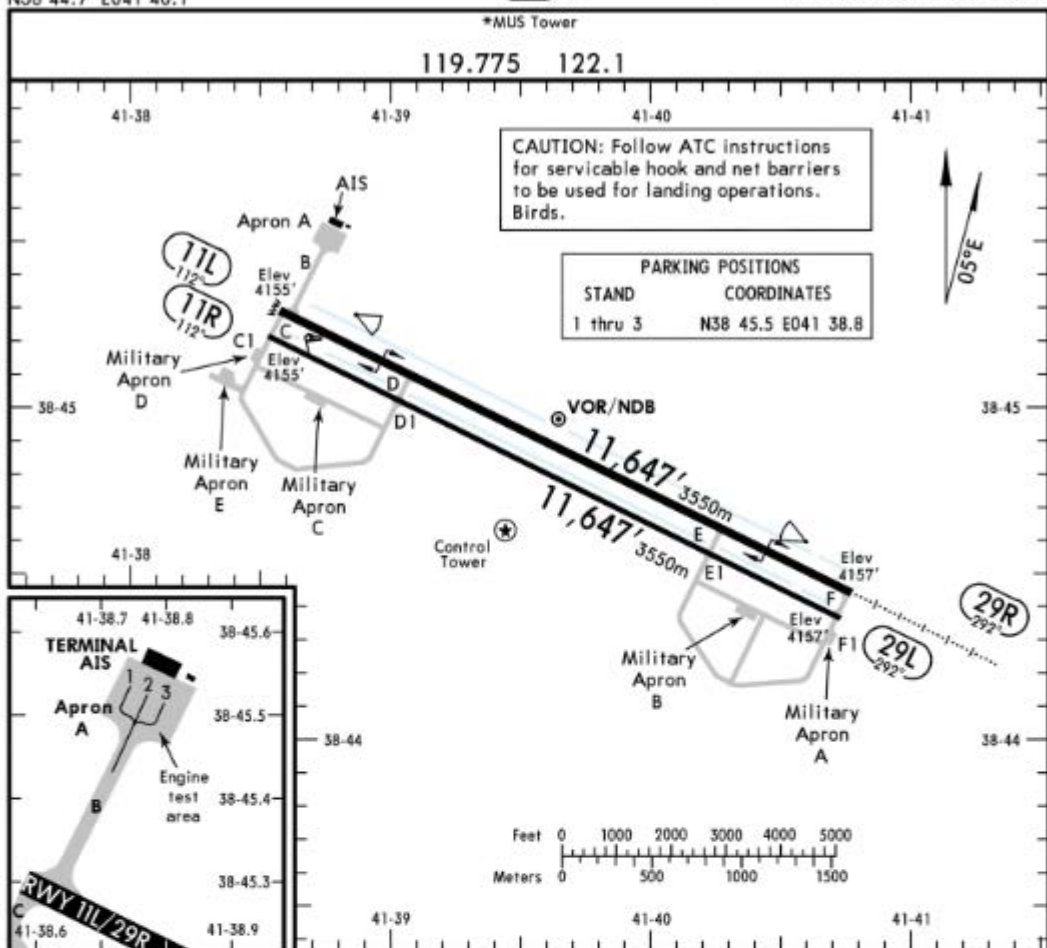
MAP at VOR/NDB	Lighting - Refer to Airport Chart	7000' on 117° from 111.2/319	MUS
----------------	-----------------------------------	------------------------------	-----

Standard CIRCLE-TO-LAND

CAUTION: Not authorized South of airport

PANS OPS

	Max Kts	MDA(H)	VIS
A	100	5300' (1143')	1500m
B	135	5300' (1143')	1600m
C	180	5300' (1143')	2400m
D	205	5520' (1363')	3600m



ADDITIONAL RUNWAY INFORMATION

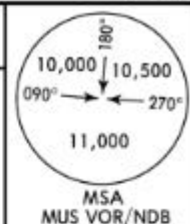
RWY			USABLE LENGTHS		TAKE-OFF	WIDTH
			LANDING	BEYOND		
			Threshold	Glide Slope		
11L	HIRL (60m)	PAPI (angle 2.6°)	RVR			148'
29R	HIRL (60m)	HIALS PAPI (angle 3.4°)	RVR	10,857' 3309m		45m
11R						75'
29L						23m

① Emergency rwy for military acct only.

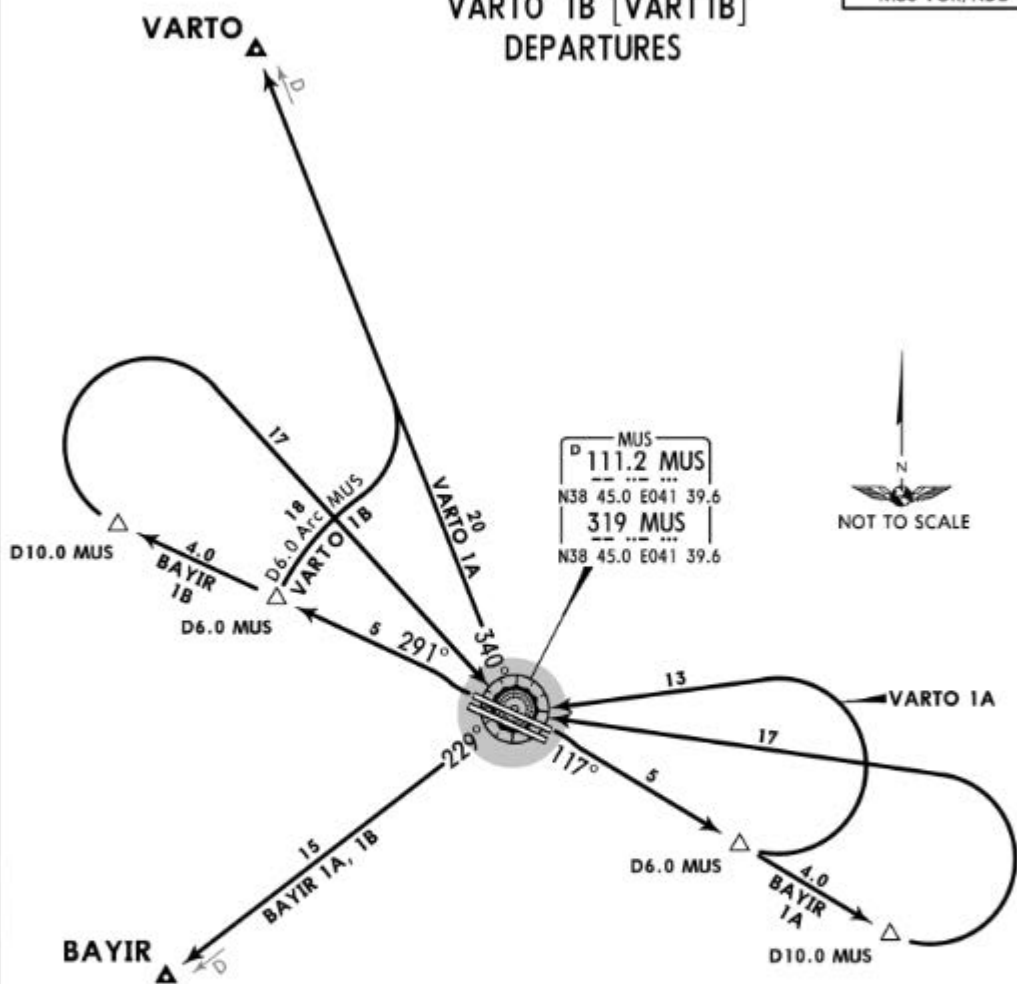
Standard		TAKE-OFF	
Low Visibility Take-off		Rwy 11L/29R	
		Rwy 11L/29R	
Day: RL & RCLM Night: RL	Day: RL or RCLM Night: RL	Adequate vis ref (Day only)	
RVR 300m	400m	500m	

Apt Elev
4157'

Trans level: By ATC Trans alt: 12000'



BAYIR 1A [BAYI1A]
BAYIR 1B [BAYI1B]
VARTO 1A [VART1A]
VARTO 1B [VART1B]
DEPARTURES



These SIDs require a minimum climb gradient of
BAYIR 1A, 1B: 328' per NM (5.4%).
VARTO 1A, 1B: 304' per NM (5%) until VARTO.

Gnd speed-KT	75	100	150	200	250	300
328' per NM	410	547	820	1094	1367	1641
304' per NM	380	506	760	1013	1266	1519

SID	RWY	ROUTING
BAYIR 1A	11L	Climb on MUS R-117 to D10.0 MUS, turn LEFT to MUS VOR, MUS R-229 to BAYIR, join airway.
BAYIR 1B	29R	Climb on MUS R-291 to D10.0 MUS, turn RIGHT to MUS VOR, MUS R-229 to BAYIR, join airway.
VARTO 1A	11L	Climb on MUS R-117 to D6.0 MUS, turn LEFT to MUS VOR, MUS R-340 to VARTO, join airway.
VARTO 1B	29R	Climb on MUS R-291 to D6.0 MUS, turn RIGHT, along D6.0 Arc MUS, intercept MUS R-340 to VARTO, join airway.