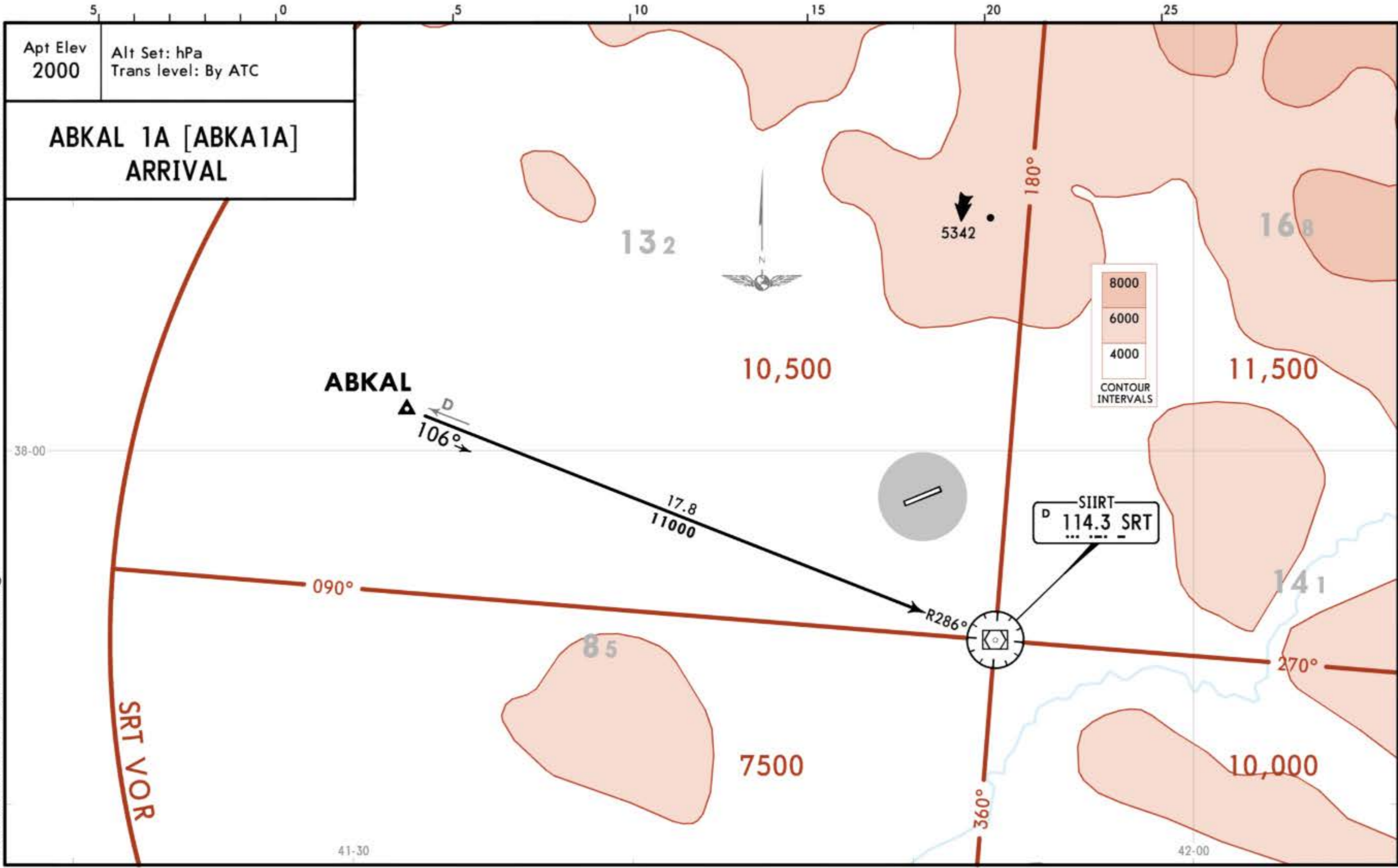


LTCL/SXZ  
SIIRT

12 APR 19 10-2 Eff 25 Apr  
JEPPesen

SIIRT, TURKEY  
STAR



Apt Elev 2000  
Alt Set: hPa  
Trans level: By ATC

**ABKAL 1A [ABKA1A]  
ARRIVAL**

8000  
6000  
4000  
CONTOUR INTERVALS

SIIRT  
D 114.3 SRT

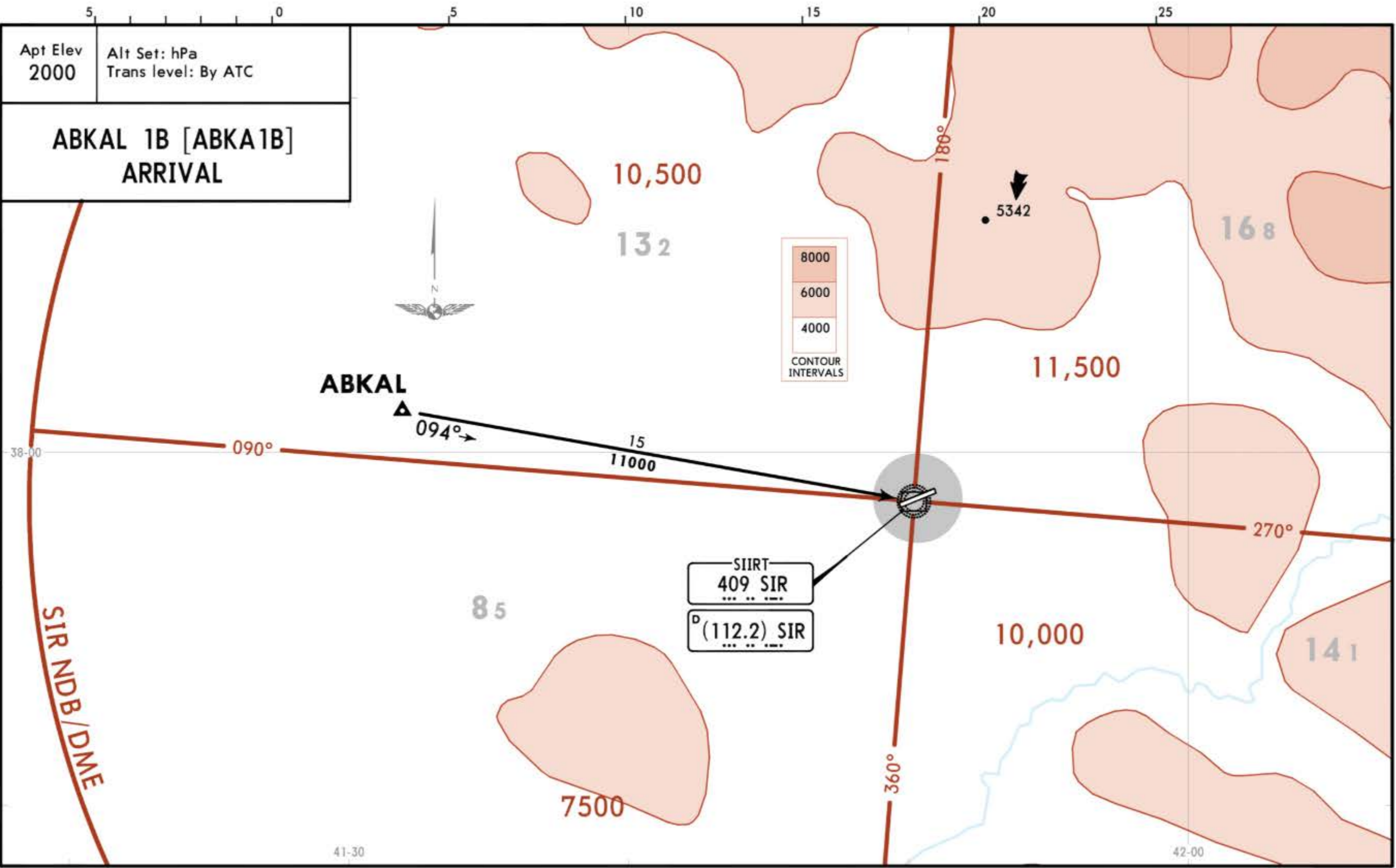
CHANGES: Bearing; requirement note withdrawn.

© JEPPesen, 2017, 2019. ALL RIGHTS RESERVED.

LTCL/SXZ  
SIIRT

12 APR 19  
JEPPESSEN  
10-2A  
Eft 25 Apr

SIIRT, TURKEY  
STAR



CHANGES: Bearing; requirement note withdrawn.

© JEPPESSEN, 2017, 2019. ALL RIGHTS RESERVED.

Apt Elev  
2000

Alt Set: hPa  
Trans level: By ATC

**ABKAL 1B [ABKA1B]  
ARRIVAL**

8000  
6000  
4000  
CONTOUR  
INTERVALS

SIIRT  
409 SIR  
... ..

<sup>D</sup>(112.2) SIR  
... ..

38-00

41-30

42-00

LTCL/SXZ  
SIIRT

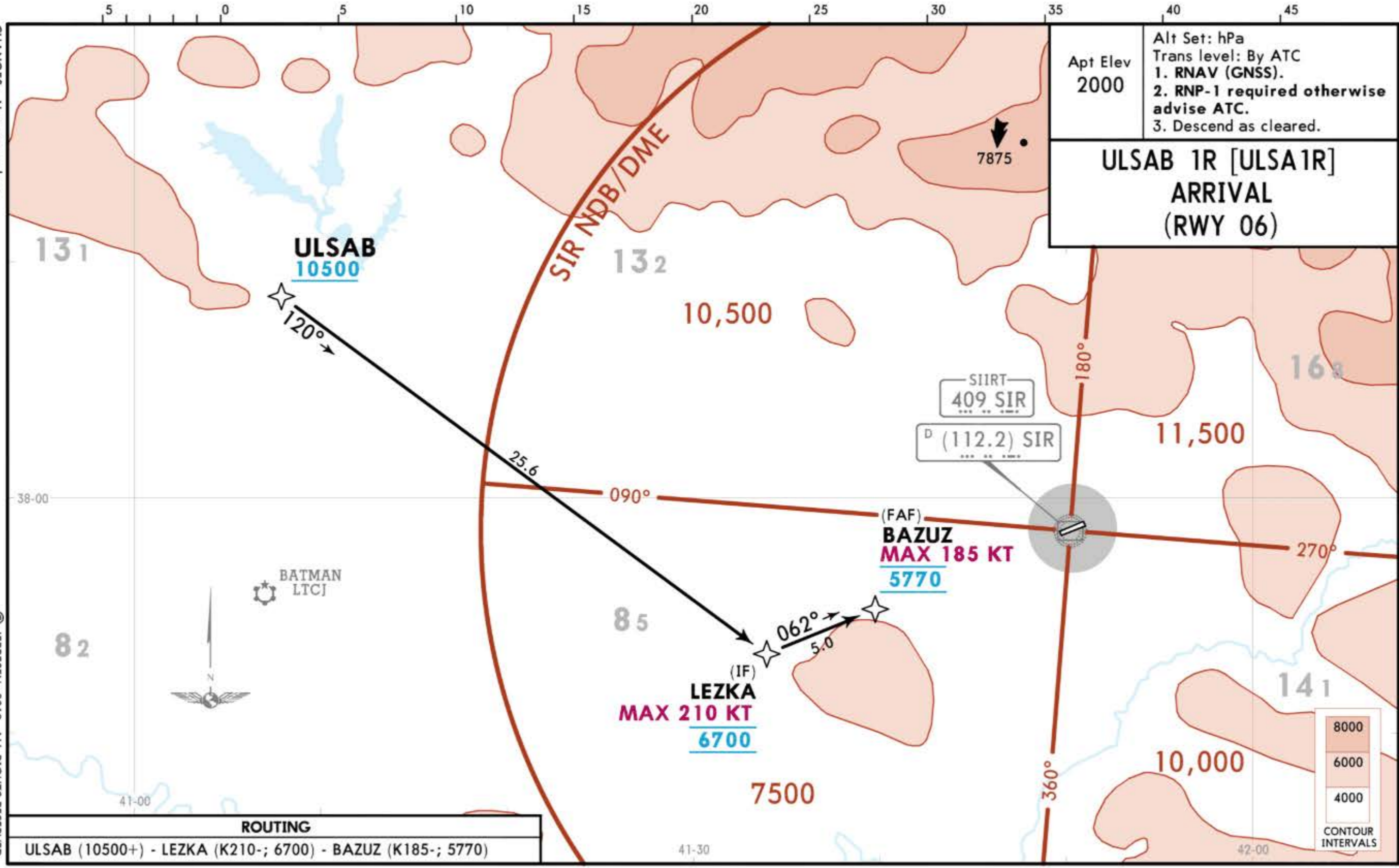
12 APR 19  
JEPPESSEN  
10-2B Eff 25 Apr

SIIRT, TURKEY  
RNAV STAR

Apt Elev  
2000

Alt Set: hPa  
Trans level: By ATC  
1. RNAV (GNSS).  
2. RNP-1 required otherwise  
advise ATC.  
3. Descend as cleared.

**ULSAB 1R [ULSA1R]**  
**ARRIVAL**  
**(RWY 06)**



CHANGES: New procedure.

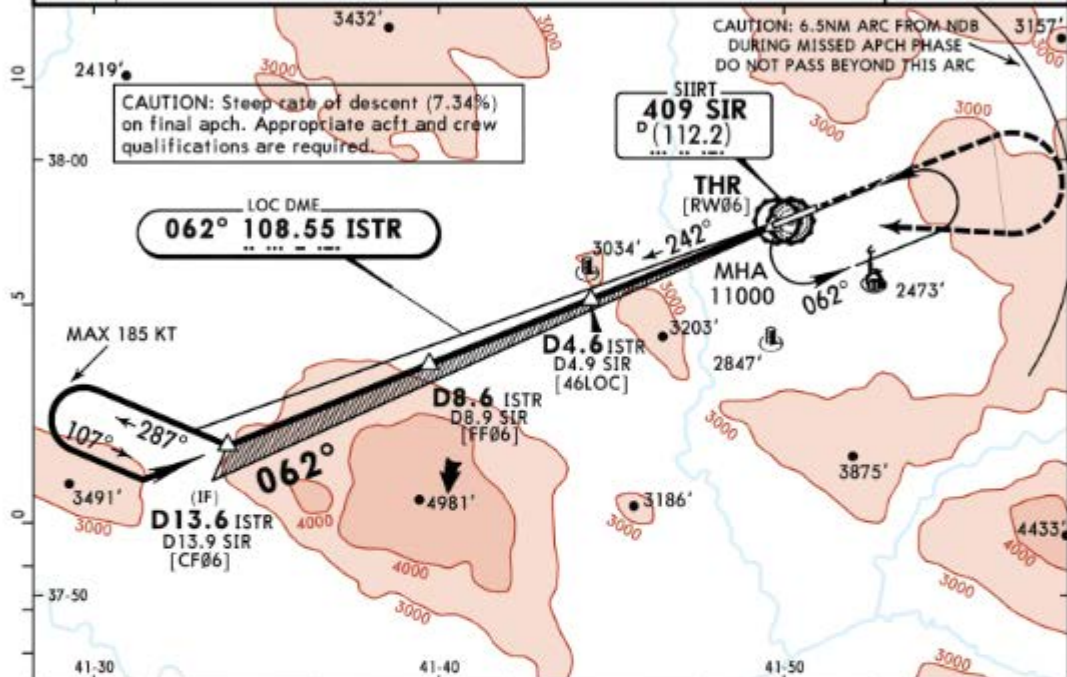
© JEPPESEN, 2019. ALL RIGHTS RESERVED.

LTCL/SXZ  
SIIRT

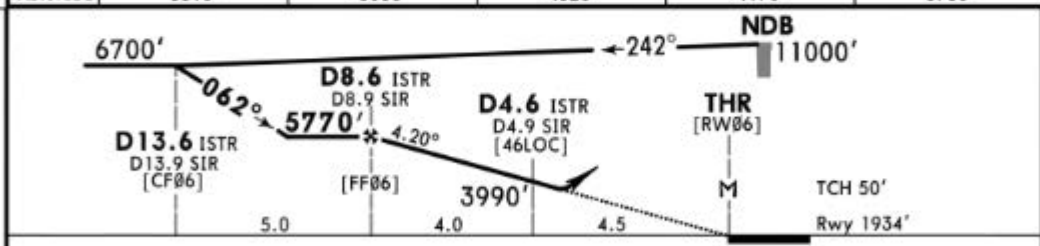
JEPPESEN  
19 APR 19 (11-1) Eff 25 Apr

SIIRT, TURKEY  
LOC Z Rwy 06

*SIIRT Approach		*SIIRT Tower			*Ground
120.150	132.05	132.05			121.9
LOC ISTR <b>108.55</b>	Final Apch Crs <b>062°</b>	Minimum Alt <b>D8.6 ISTR</b> 5770' (3836')	DA/MDA(H) Refer to Minimums	Apt Elev 2000' Rwy 1934'	<p>MSA SIR NDB</p>
<p><b>MISSED APCH:</b> Climb STRAIGHT AHEAD until passing 5480', then turn RIGHT climbing to 11000' to NDB and hold. If unable to reach 11000' climbing on 242° from NDB, after passing 8750' turn RIGHT to 11000' to NDB and hold. Refer to minimums for missed apch climb gradient. MAX 185 KT.</p>					
Alt Set: hPa		Rwy Elev: 69 hPa	Trans level: By ATC	Trans alt: 12000'	
DME required.					



ISTR DME	8.0	7.0	6.0	5.0	4.0
ALTITUDE	5510'	5060'	4620'	4170'	3730'



Gnd speed-Kts	70	90	100	120	140	160	HIJALS REIL PAPI	MAX 185 KT	5480' ↑	11000'	SIR 409
Descent Angle	4.20°	521	669	744	892	1041					

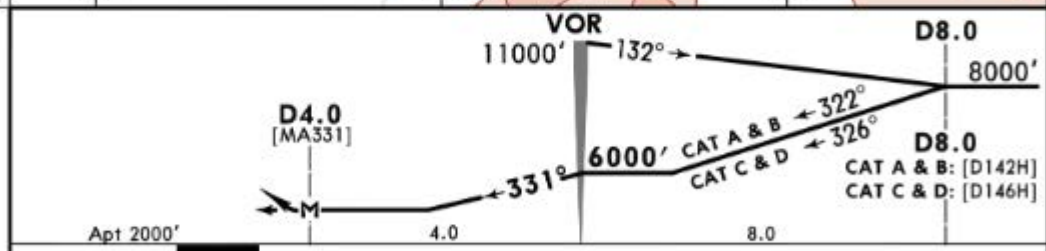
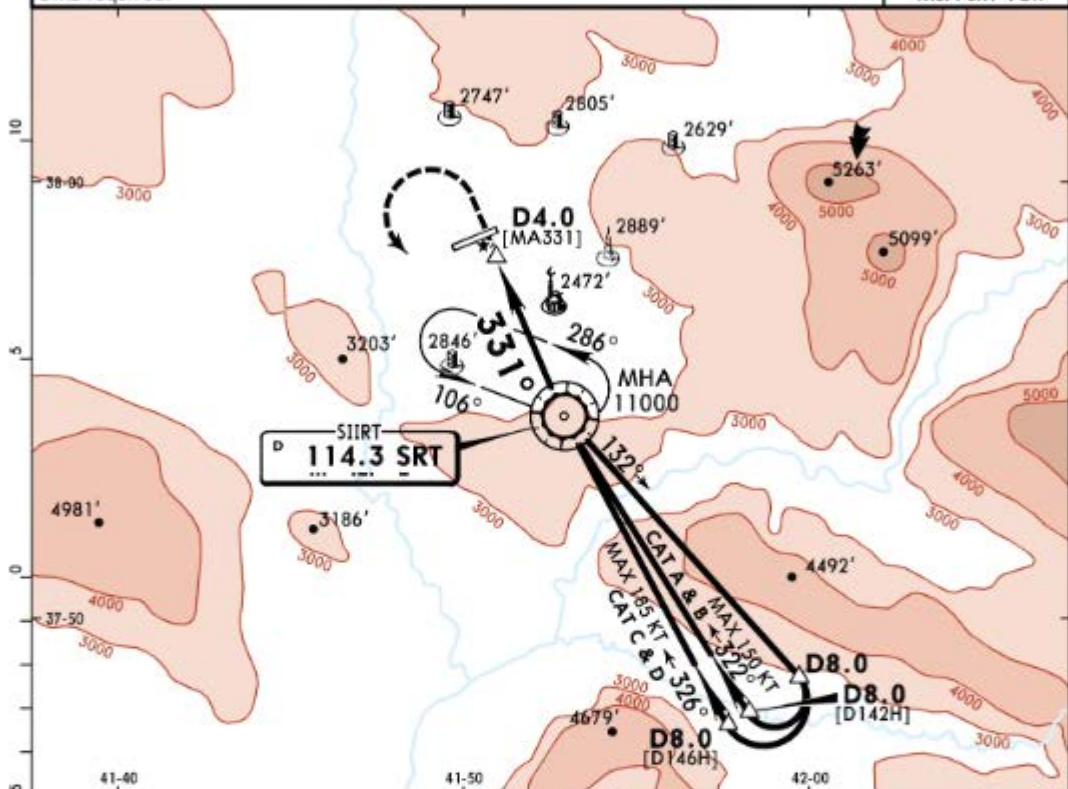
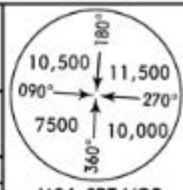
MAP at THR						Standard STRAIGHT-IN LANDING RWY 06 Missed apch climb gradient mim 5.0% CDFA DA/MDA(H) <b>3600'</b> (1666') ALS out			CIRCLE-TO-LAND CAUTION: Not authorized North of airport Missed apch climb gradient mim 2.5% CDFA DA/MDA(H) <b>4600'</b> (2666') ALS out		
A	RVR 5000m					Max Kts	100	4300' (2300')	1500m		
B							135	4300' (2300')	1600m		
C							180	4500' (2500')	2400m		
D							205	4500' (2500')	3600m		

LTCL/SXZ  
SIIRT

JEPPESEN  
19 APR 19 (13-1) Eff 25 Apr

SIIRT, TURKEY  
VOR A

*SIIRT Approach		*SIIRT Tower		*Ground	
120.150	132.05	132.05		121.9	
VOR SRT <b>114.3</b>	Final Apch Crs <b>331°</b>	No FAF	MDA(H) Refer to Minimums	Apt Elev 2000'	
<p><b>MISSED APCH:</b> Turn LEFT climbing to VOR. Cross VOR at 8000' or above. Intercept R-132 climbing to 11000', then turn LEFT to VOR and hold.</p> <p>Alt Set: hPa    Apt Elev: 71 hPa    Trans level: By ATC    Trans alt: 12000'</p> <p>DME required.</p>					
					MSA SRT VOR



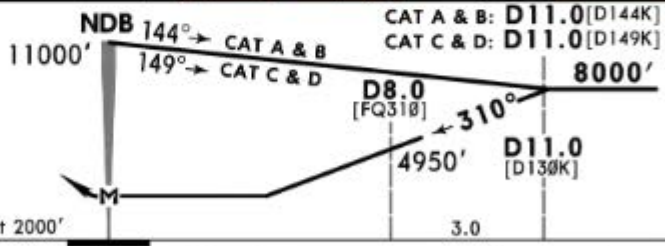
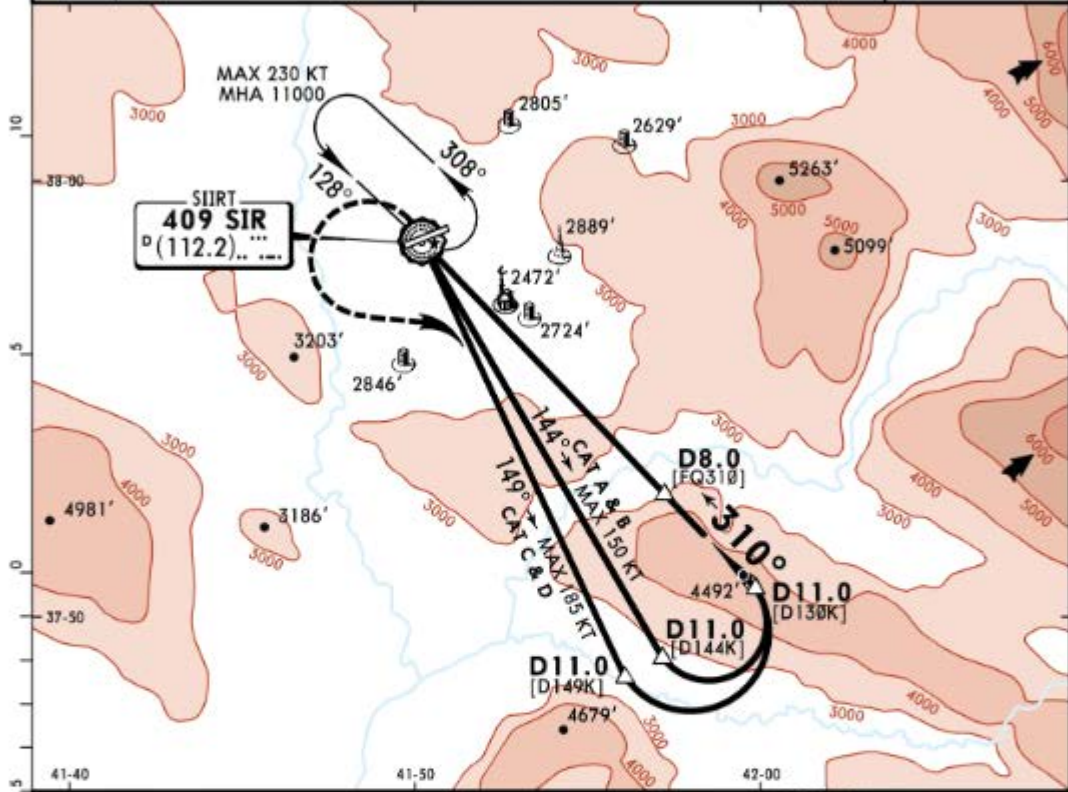
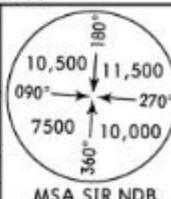
MAP at D4.0				Lighting - Refer to Airport Chart	8000' or above LT	SRT 114.3
Standard						

CIRCLE-TO-LAND

CAUTION: Not authorized North of airport

PANS OPS	Max Kts	MDA(H)		VIS
A	100	4300'	(2300')	1500m
B	135	4300'	(2300')	1600m
C	180	4500'	(2500')	2400m
D	205	4500'	(2500')	3600m

*SIIRT Approach		*SIIRT Tower		*Ground
120.150	132.05	132.05		121.9
NDB SIR <b>409</b>	Final Aph Crs <b>310°</b>	No FAF	MDA(H) Refer to Minimums	Apt Elev 2000'
<b>MISSED APCH:</b> Turn LEFT climbing to 9000' on 149° from NDB, then turn LEFT continue climb to 11000' proceeding to NDB and hold.				
Alt Set: hPa		Apt Elev: 71 hPa	Trans level: By ATC	Trans alt: 12000'
DME required.				MSA SIR NDB



MAP at NDB						Lighting - Refer to Airport Chart	9000'	149° from SIR
<b>Standard</b>	CIRCLE-TO-LAND						LT	409

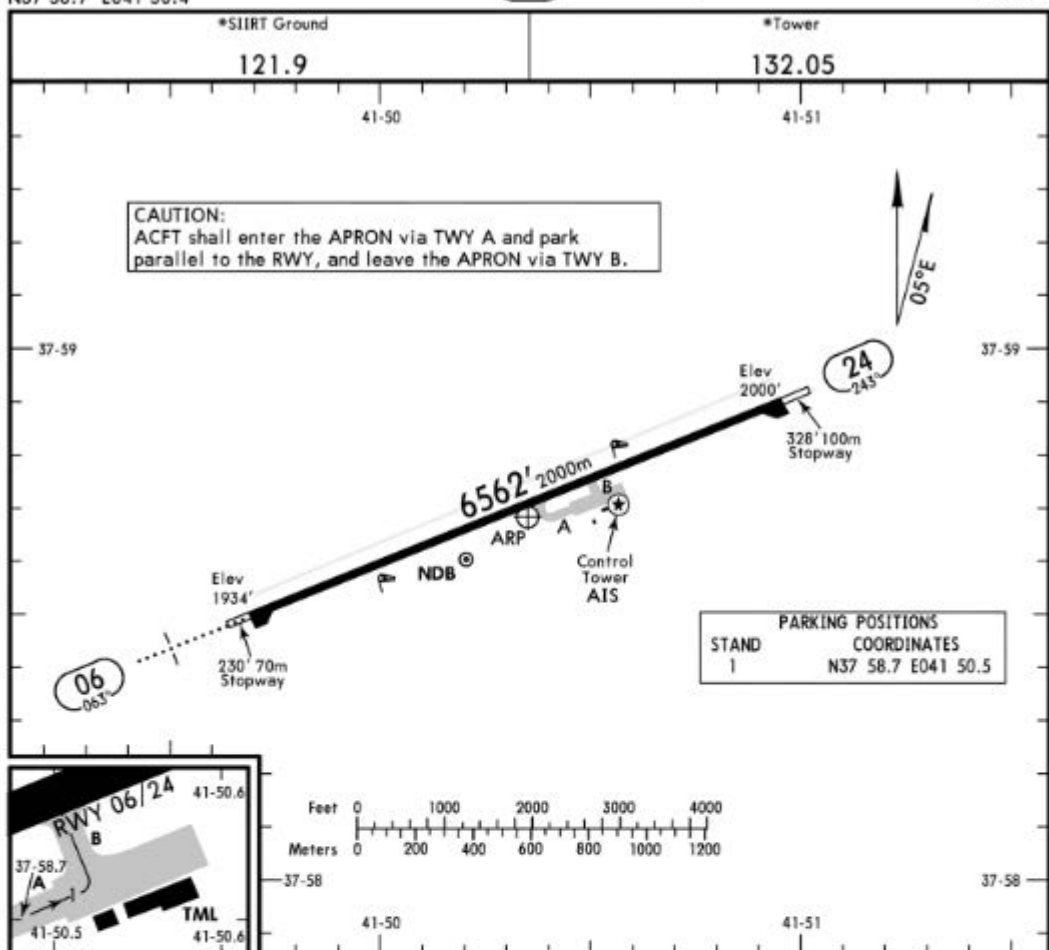
CAUTION: Not authorized North of airport

PANS OPS	Max Kts	MDA(H)		VIS
A	100	4300'	(2300')	1500m
B	135	4300'	(2300')	1600m
C	180	4500'	(2500')	2400m
D	205	4500'	(2500')	3600m

LTCL/SXZ  
 Apt Elev 2000'  
 N37 58.7 E041 50.4

JEPPESEN  
 15 FEB 19 (10-9) Eff 28 Feb

SIIRT, TURKEY  
 SIIRT



PARKING POSITIONS  
 STAND COORDINATES  
 1 N37 58.7 E041 50.5

ADDITIONAL RUNWAY INFORMATION

RWY	HIRL (60m) HIALS SFL REIL PAPI-L (angle 4.2°)	USABLE LENGTHS		TAKE-OFF	WIDTH
		Threshold	Landing Beyond Glide Slope		
06	HIRL (60m) HIALS SFL REIL PAPI-L (angle 4.2°)				98'
24	HIRL (60m)				30m

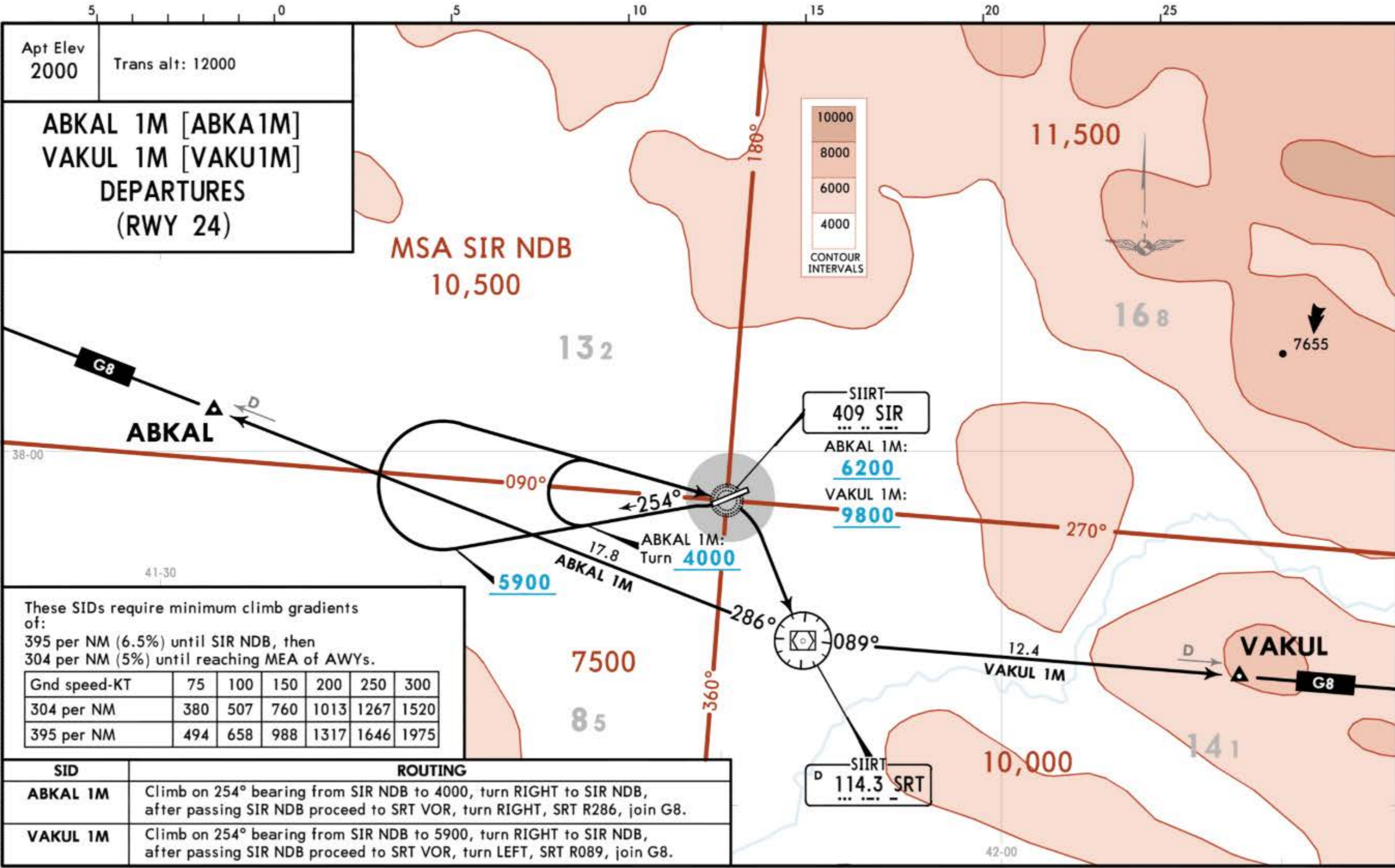
Standard

TAKE-OFF

	Low Visibility Take-off		
	Day: RL & RCLM Night: RL	Day: RL or RCLM Night: RL	Adequate vis ref (Day only)
A			
B			
C	RVR 300m	400m	500m
D			

CHANGES: Bearings, requirement note withdrawn.

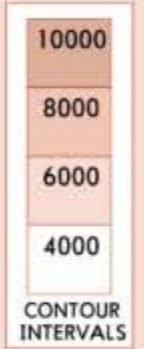
© JEPPESSEN, 2017, 2019. ALL RIGHTS RESERVED.



Apt Elev  
2000  
Trans alt: 12000

**ABKAL 1M [ABKA1M]  
VAKUL 1M [VAKU1M]  
DEPARTURES  
(RWY 24)**

**MSA SIR NDB  
10,500**

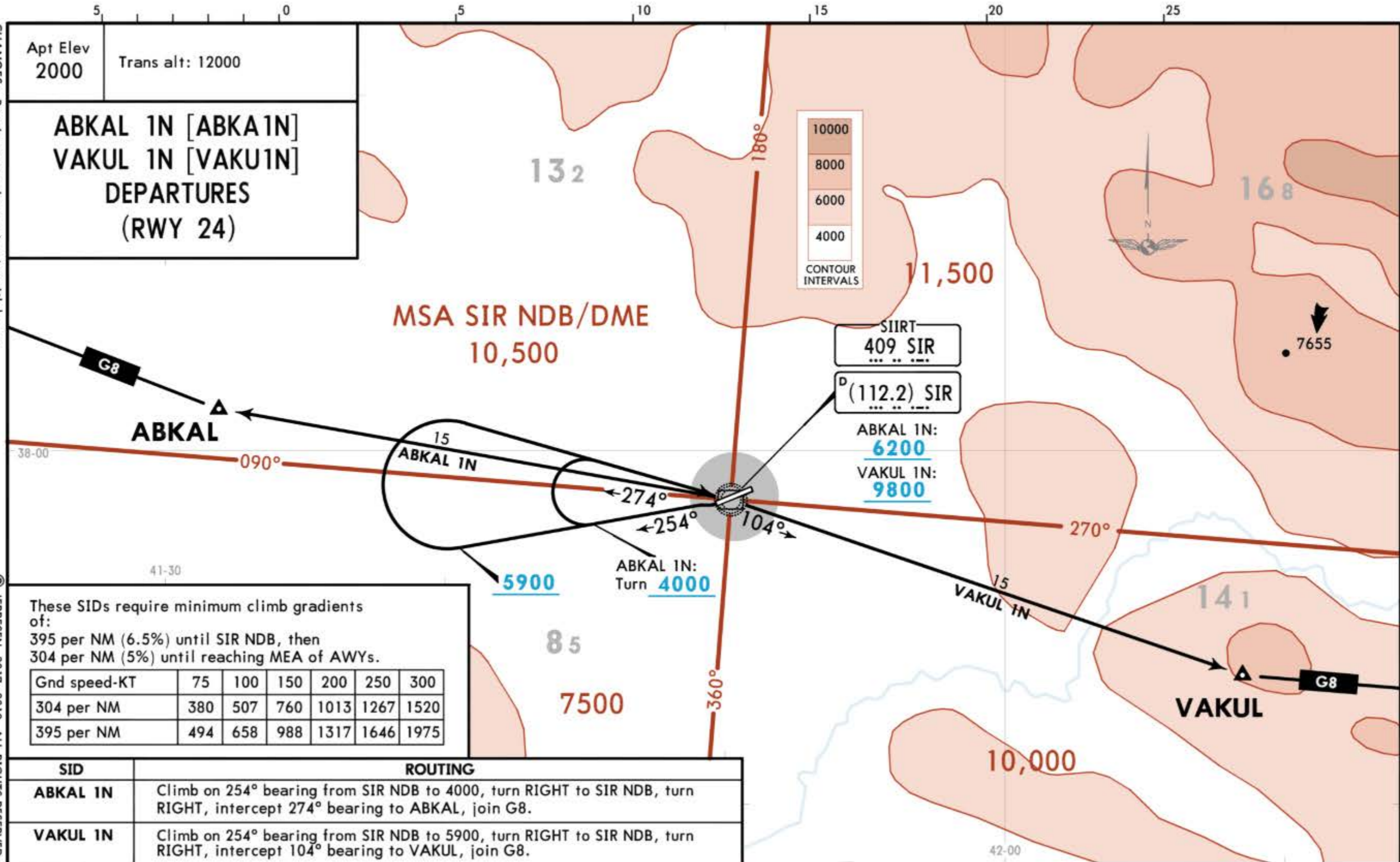


These SIDs require minimum climb gradients of:  
395 per NM (6.5%) until SIR NDB, then  
304 per NM (5%) until reaching MEA of AWYs.

Gnd speed-KT	75	100	150	200	250	300
304 per NM	380	507	760	1013	1267	1520
395 per NM	494	658	988	1317	1646	1975

SID	ROUTING
<b>ABKAL 1M</b>	Climb on 254° bearing from SIR NDB to 4000, turn RIGHT to SIR NDB, after passing SIR NDB proceed to SRT VOR, turn RIGHT, SRT R286, join G8.
<b>VAKUL 1M</b>	Climb on 254° bearing from SIR NDB to 5900, turn RIGHT to SIR NDB, after passing SIR NDB proceed to SRT VOR, turn LEFT, SRT R089, join G8.





CHANGES: Bearings; requirement note withdrawn.

© JEPPESSEN, 2017, 2019. ALL RIGHTS RESERVED.