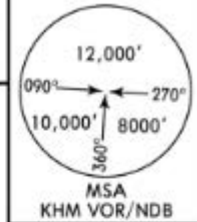


Apt Elev
1724'

Alt Set: hPa Trans level: By ATC Trans alt: 15000'
1. RNP 1 required.
2. RNAV (GNSS).

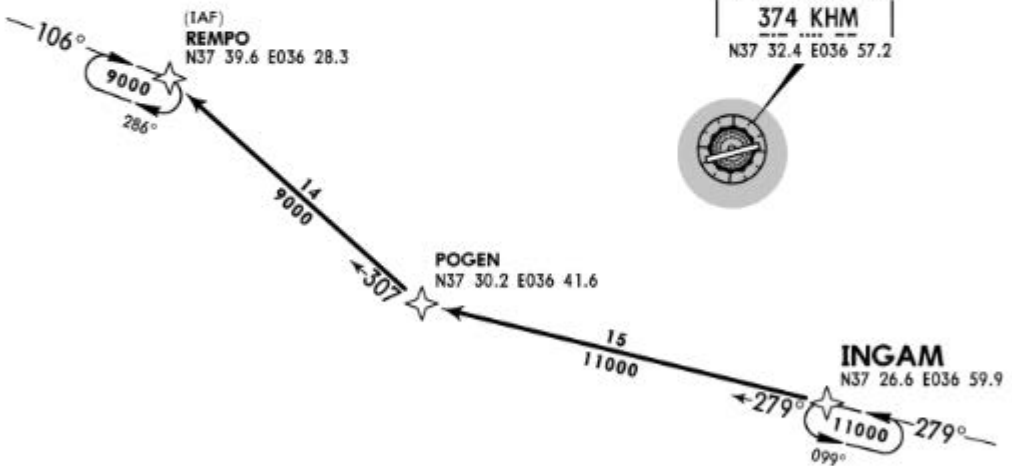


INGAM 1G [INGA1G]
RWY 07 RNAV ARRIVAL

Direct distance to
Kahramanmaras Apt
from REMPO 24 NM

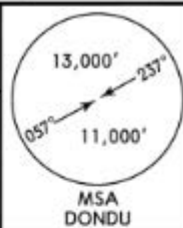


KAHRAMANMARAS
D 113.9 KHM
N37 32.4 E036 57.2
374 KHM
N37 32.4 E036 57.2



Apt Elev
1724'

Alt Set: hPa Trans level: By ATC Trans alt: 15000'
1. RNP 1 required.
2. RNAV (GNSS).



POGEN 1B [POGE1B] RWY 25 RNAV ARRIVAL

Direct distance to
Kahramanmaras Apt
from INGAM 6 NM.



DONDU
N37 35.2 E037 03.5
△

POGEN
N37 30.2 E036 41.6

△ 099°

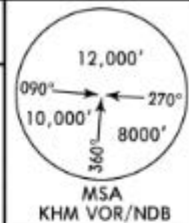
15
14000

(IAF)
INGAM
N37 26.6 E036 59.9

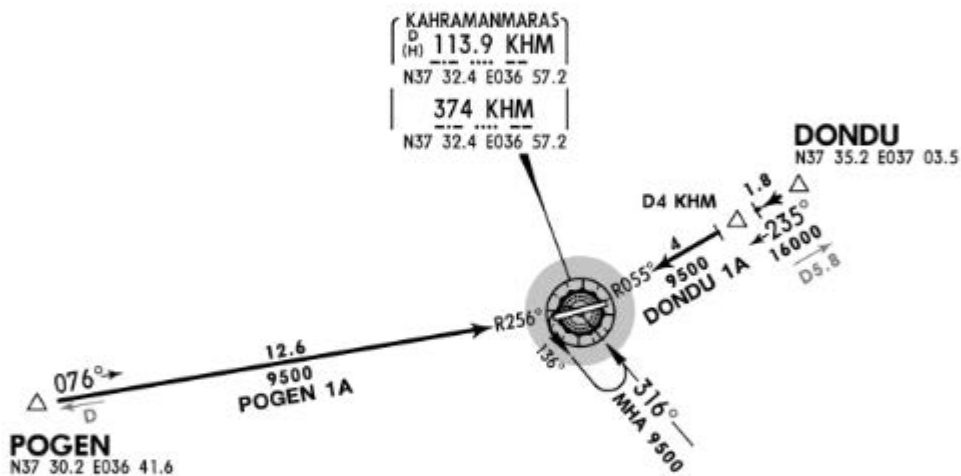
14000
279°

Apt Elev
1724'

Alt Set: hPa Trans level: By ATC Trans alt: 15000'



DONDU 1A [DOND1A]
POGEN 1A [POGE1A]
ARRIVALS



LTCN/KCM
KAHRAMANMARAS

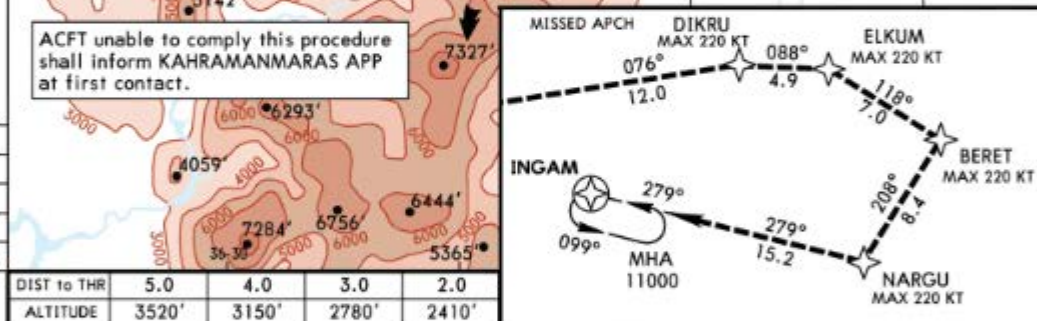
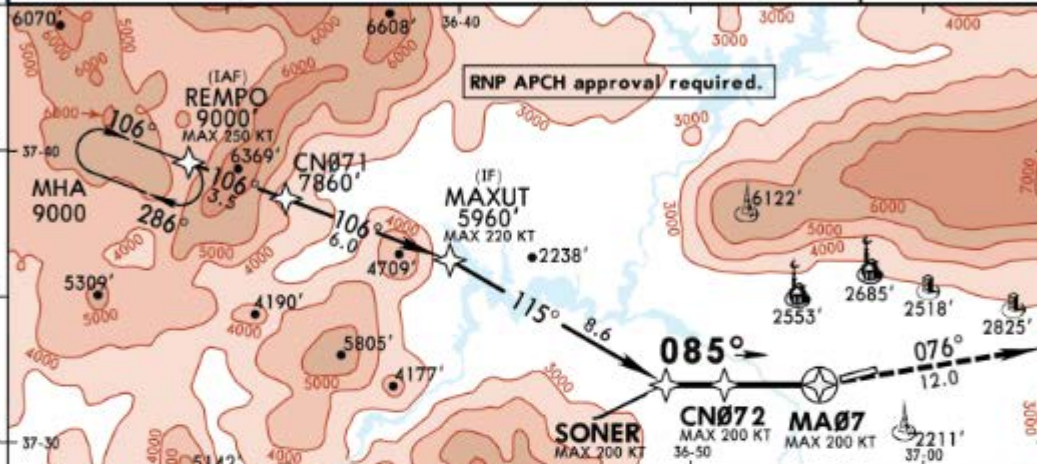
JEPPesen KAHRAMANMARAS, TURKEY
23 MAR 18 (12-1) Eff 29 Mar RNAV (GNSS) Rwy 07

KAHRAMANMARAS Approach		KAHRAMANMARAS Tower		Ground
118.750	120.6	118.750	120.6	121.550

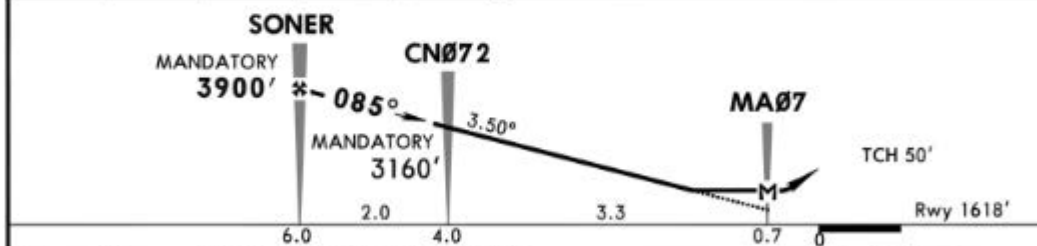
RNAV	Final Apch Crs 085°	Mandatory Alt SONER 3900' (2282')	LNAV DA/MDA(H) (CONDITIONAL) 2220' (602')	Apt Elev 1724' Rwy 1618'	
------	----------------------------------	--	---	-----------------------------	--

MISSED APCH: Climb to 11000'. Turn LEFT to DIKRU, then turn RIGHT to ELKUM, then turn RIGHT to BERET, then turn RIGHT to NARGU, then turn RIGHT to INGAM and join holding.

Alt Set: hPa	Rwy Elev: 58 hPa	Trans level: By ATC	Trans alt: 15000'	MSA MA07
--------------	------------------	---------------------	-------------------	----------



DIST to THR	5.0	4.0	3.0	2.0
ALTITUDE	3520'	3150'	2780'	2410'



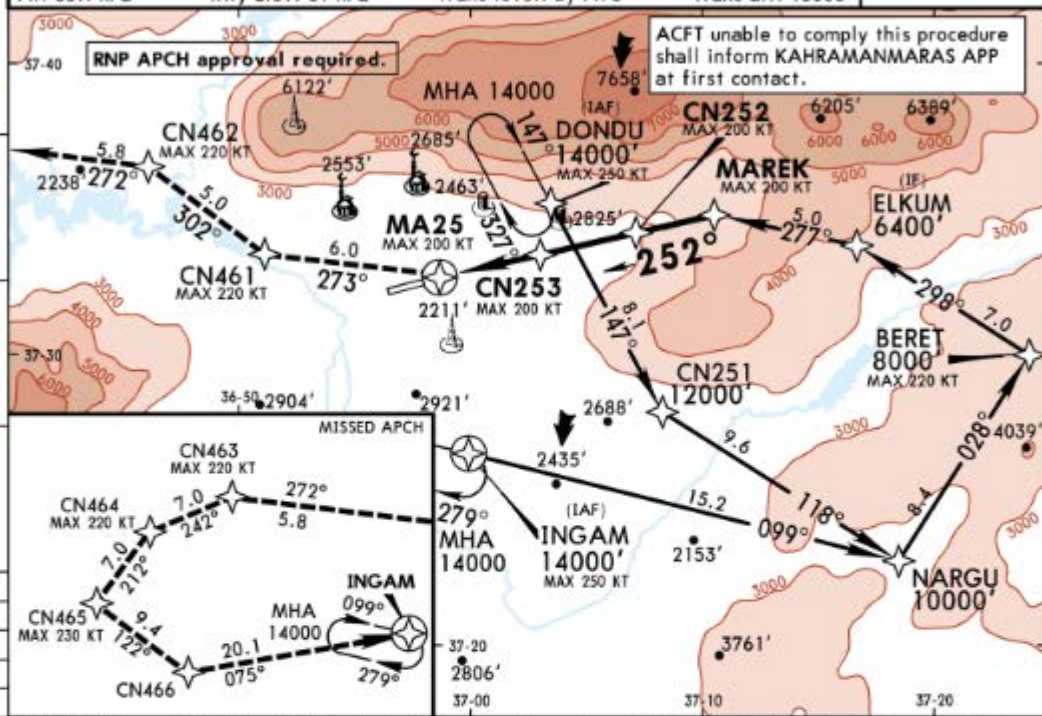
Gnd speed-Kts	70	90	100	120	140	160	
Descent Angle	3.50°	434	557	619	743	867	

Standard		STRAIGHT-IN LANDING RWY 07		CIRCLE-TO-LAND CAUTION: Not authorized North of airport	
Missed apch climb grad min 4.5% CDFA DA/MDA(H) 2220' (602')		LNAV Missed apch climb grad min 2.5% CDFA DA/MDA(H) 2800' (1182')			
ALS out		ALS out		Max Kts	MDA(H) VIS
A	RVR 1500m	RVR 1500m		100	3100' (1376') 1500m
B				135	3100' (1376') 1600m
C	RVR 2800m	RVR 5000m		180	3400' (1676') 2400m
D				205	3400' (1676') 3600m

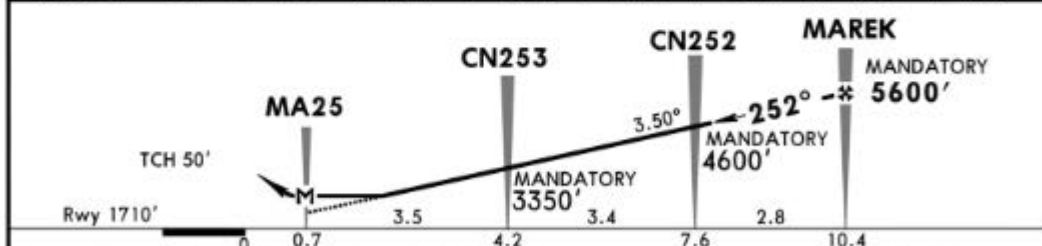
LTCN/KCM
KAHRAMANMARAS

JEPPESEN KAHRAMANMARAS, TURKEY
23 MAR 18 (12-2) Eff 29 Mar RNAV (GNSS) Rwy 25

KAHRAMANMARAS Approach		KAHRAMANMARAS Tower		Ground
118.750	120.6	118.750	120.6	121.550
RNAV	Final Aptch Crs 252°	Mandatory Alt MAREK 5600' (3890')	LNAV DA/MDA(H) (CONDITIONAL) 2700' (990')	Apt Elev 1724' Rwy 1710'
<p>MISSED APCH: Climb to 14000'. Turn RIGHT to CN461, then turn RIGHT to CN462, then turn LEFT to CN463, then turn LEFT to CN464, then turn LEFT to CN465, then turn LEFT to CN466, then turn LEFT to INGAM and join holding.</p>				<p>MSA DONDU</p>
Alt Set: hPa	Rwy Elev: 61 hPa	Trans level: By ATC	Trans alt: 15000'	



DIST to THR	9.0	8.0	7.0	6.0	5.0	4.0	3.0	2.0
ALTITUDE	5080'	4710'	4340'	3970'	3600'	3230'	2860'	2490'



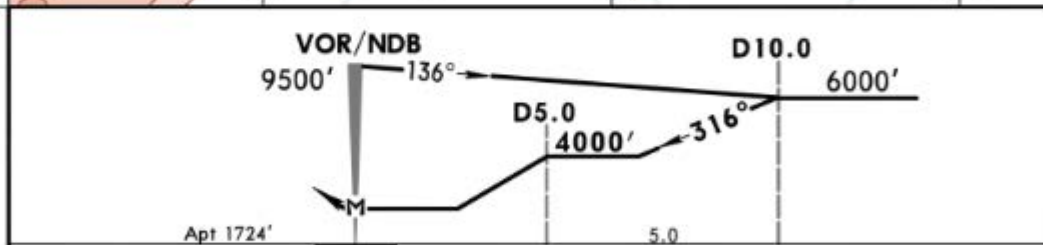
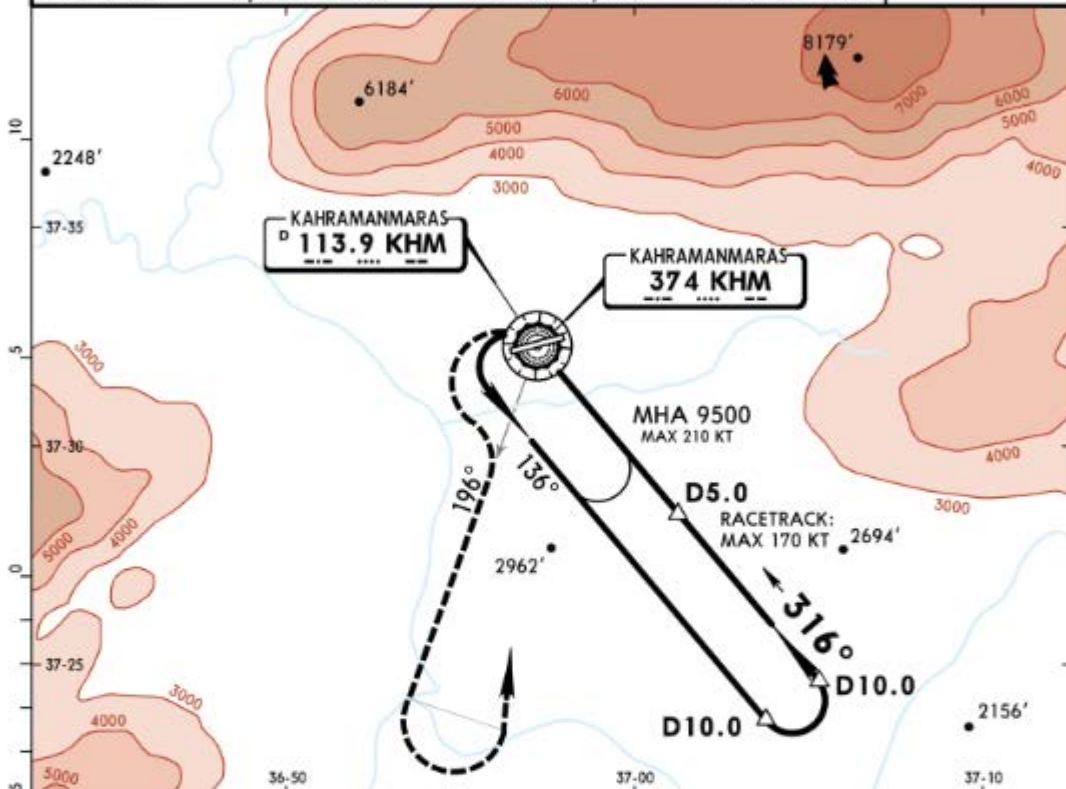
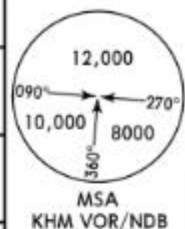
Gnd speed-Kts	70	90	100	120	140	160		CN461 RT
Descent Angle 3.50°	434	557	619	743	867	991		

PANS OPS	STRAIGHT-IN LANDING RWY 25		CIRCLE-TO-LAND CAUTION: Not authorized North of airport	
	LNAV			
	Missed apch climb grad mim 4.0%	Missed apch climb grad mim 2.5%		
	CDFA DA/MDA(H) 2700' (990') ALS out	CDFA DA/MDA(H) 3030' (1320') ALS out	Max Kts	MDA(H) VIS
A	RVR 1500m	RVR 5000m	100	3100' (1376') 1500m
B	RVR 1500m		135	3100' (1376') 1600m
C	RVR 2400m		180	3400' (1676') 2400m
D	RVR 2400m		205	3400' (1676') 3600m

LTCN/KCM KAHRAMANMARAS

JEPPESEN KAHRAMANMARAS, TURKEY
 23 MAR 18 **(13-1)** Eff 29 Mar **VOR DME or NDB DME**

KAHRAMANMARAS Approach		KAHRAMANMARAS Tower		Ground	
118.750	120.6	118.750	120.6	121.550	
VOR KHM 113.9	NDB KHM 374	Final Apch Crs 316°	Minimum Alt D5.0 4000' (2226')	MDA(H) Refer to Minimums	Apt Elev 1724'
MISSED APCH: Turn LEFT onto 196° from VOR/NDB climbing to 6000', then turn LEFT climbing to 9500' to proceed to VOR/NDB and hold.					
Alt Set: hPa		Apt Elev: 62 hPa		Trans level: By ATC	
				Trans alt: 15000'	



MAP at VOR/NDB				Lighting - Refer to Airport Chart	Refer to Missed apch above
----------------	--	--	--	-----------------------------------	----------------------------

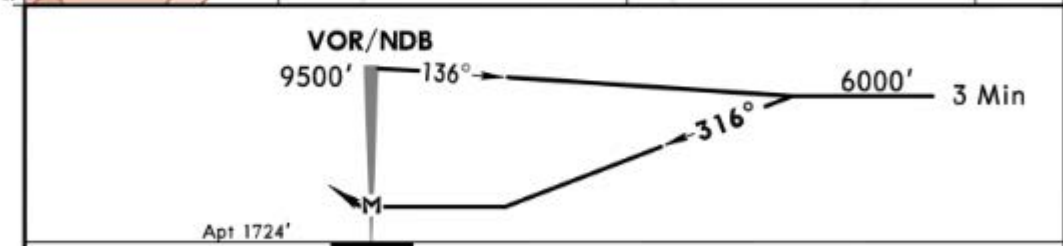
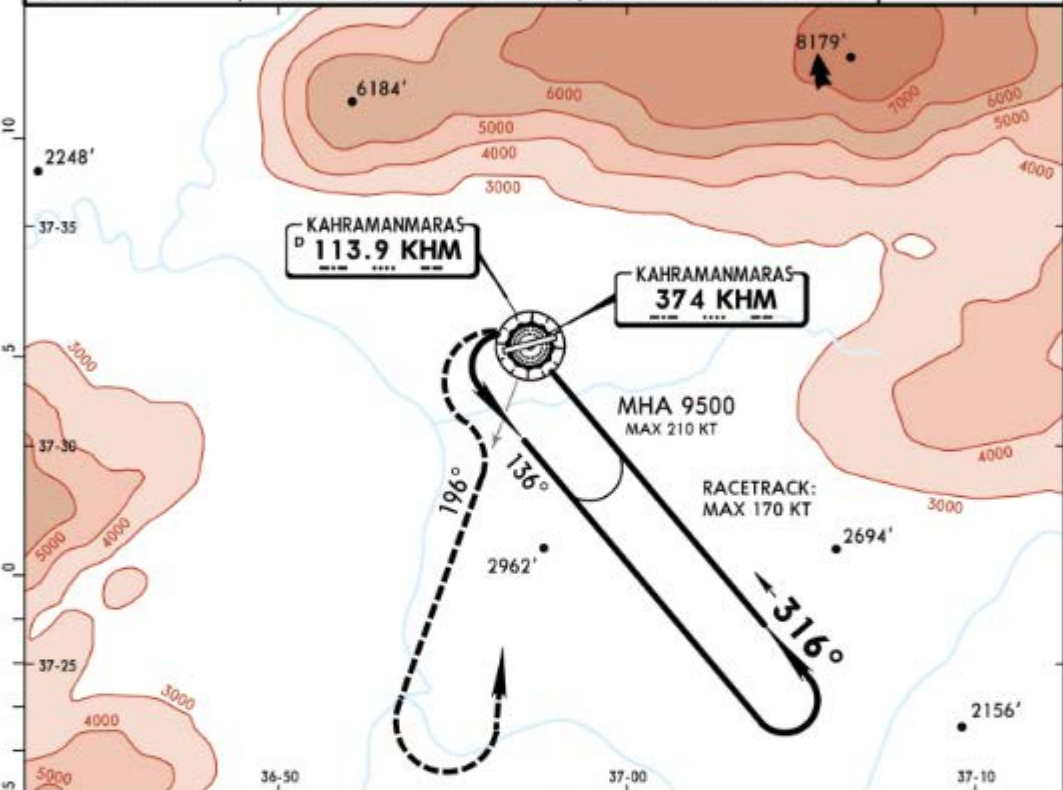
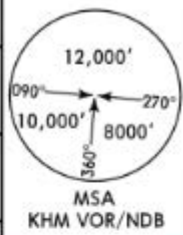
Standard **CIRCLE-TO-LAND**
 CAUTION:
 Not authorized North of airport

	Max Kts	MDA(H)	VIS
A	100	3100' (1376')	1500m
B	135	3100' (1376')	1600m
C	180	3400' (1676')	2400m
D	205	3400' (1676')	3600m

LTCN/KCM KAHRAMANMARAS

23 MAR 18 (13-2) Eff 29 Mar

KAHRAMANMARAS Approach		KAHRAMANMARAS Tower		Ground	
118.750	120.6	118.750	120.6	121.550	
VOR KHM 113.9	NDB KHM 374	Final Apch Crs 316°	Minimum Alt No FAF	MDA(H) Refer to Minimums	Apt Elev 1724'
<p>MISSED APCH: Turn LEFT onto 196° from VOR/NDB climbing to 6000', then turn LEFT climbing to 9500' to proceed to VOR/NDB and hold.</p>					
Alt Set: hPa		Apt Elev: 62 hPa		Trans level: By ATC	
				Trans alt: 15000'	



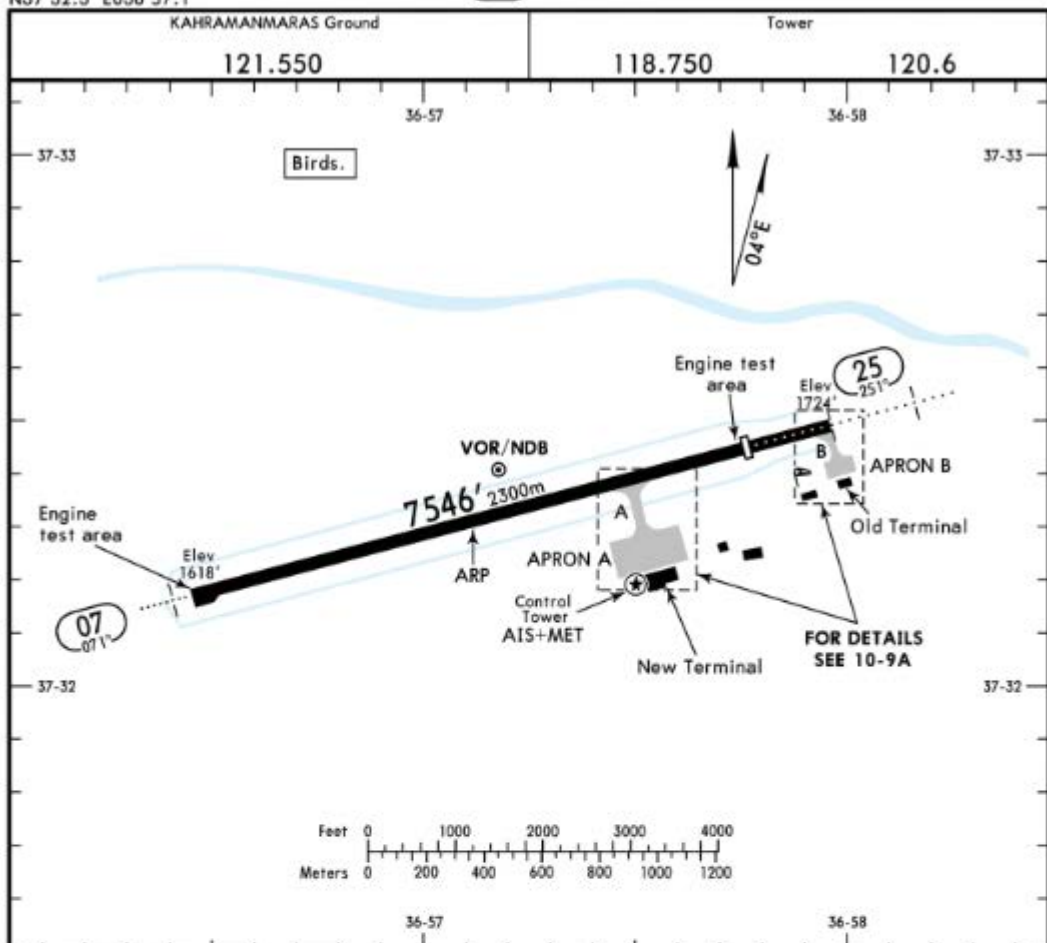
MAP at VOR/NDB				Lighting - Refer to Airport Chart	Refer to Missed apch above
----------------	--	--	--	-----------------------------------	----------------------------

Standard CIRCLE-TO-LAND CAUTION: Not authorized North of airport

PANS OPS	Max Kts	MDA(H)	VIS
A	100	3100' (1376')	1500m
B	135	3100' (1376')	1600m
C	180	3400' (1676')	2400m
D	205	3400' (1676')	3600m

LTCN/KCM
 Apt Elev 1724'
 N37 32.3 E036 57.1

JEPPESEN KAHRAMANMARAS, TURKEY
 26 OCT 18 **10-9** Eff 8 Nov
 KAHRAMANMARAS



ADDITIONAL RUNWAY INFORMATION

RWY	25	HIRL (60m) HIALS SFL REIL PAPI-L (angle 3.0°)	USABLE LENGTHS		TAKE-OFF	WIDTH
			Threshold	LANDING BEYOND Glide Slope		
			6562' 2000m			148' 45m

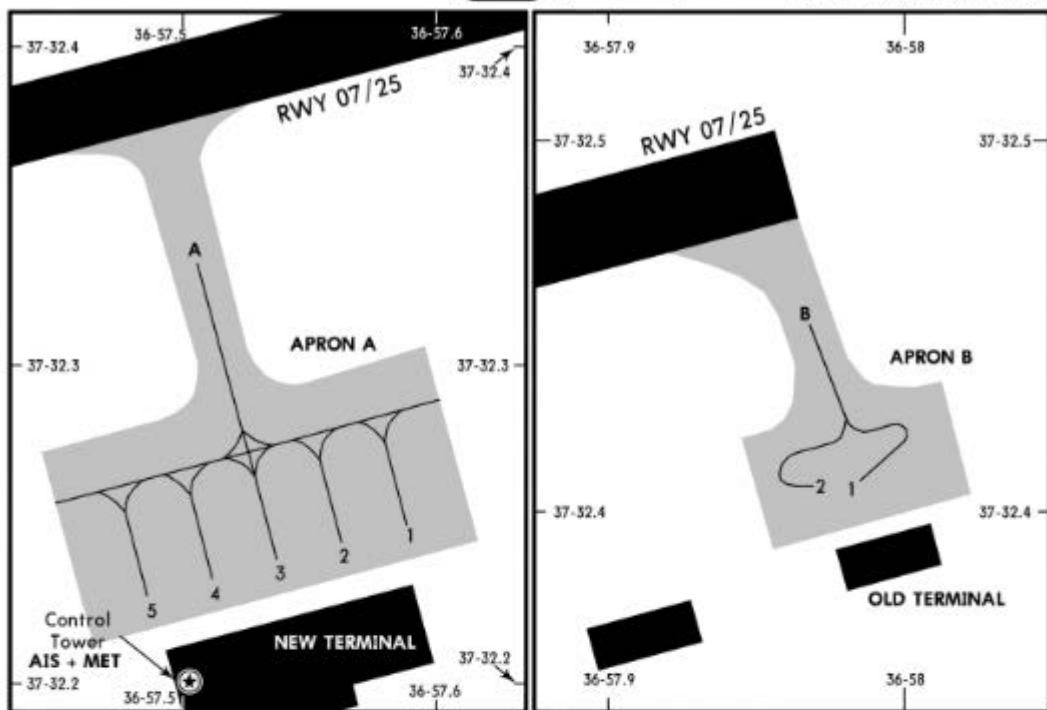
Standard

TAKE-OFF

	Low Visibility Take-off	Day: RL or RCLM Night: RL	Adequate vis ref (Day only)
A		Day: RL or RCLM Night: RL	
B			
C	RVR 300m	400m	500m
D			

CHANGES: Twys A and B. New apron. Twr.

© JEPPESEN, 2002, 2018. ALL RIGHTS RESERVED.



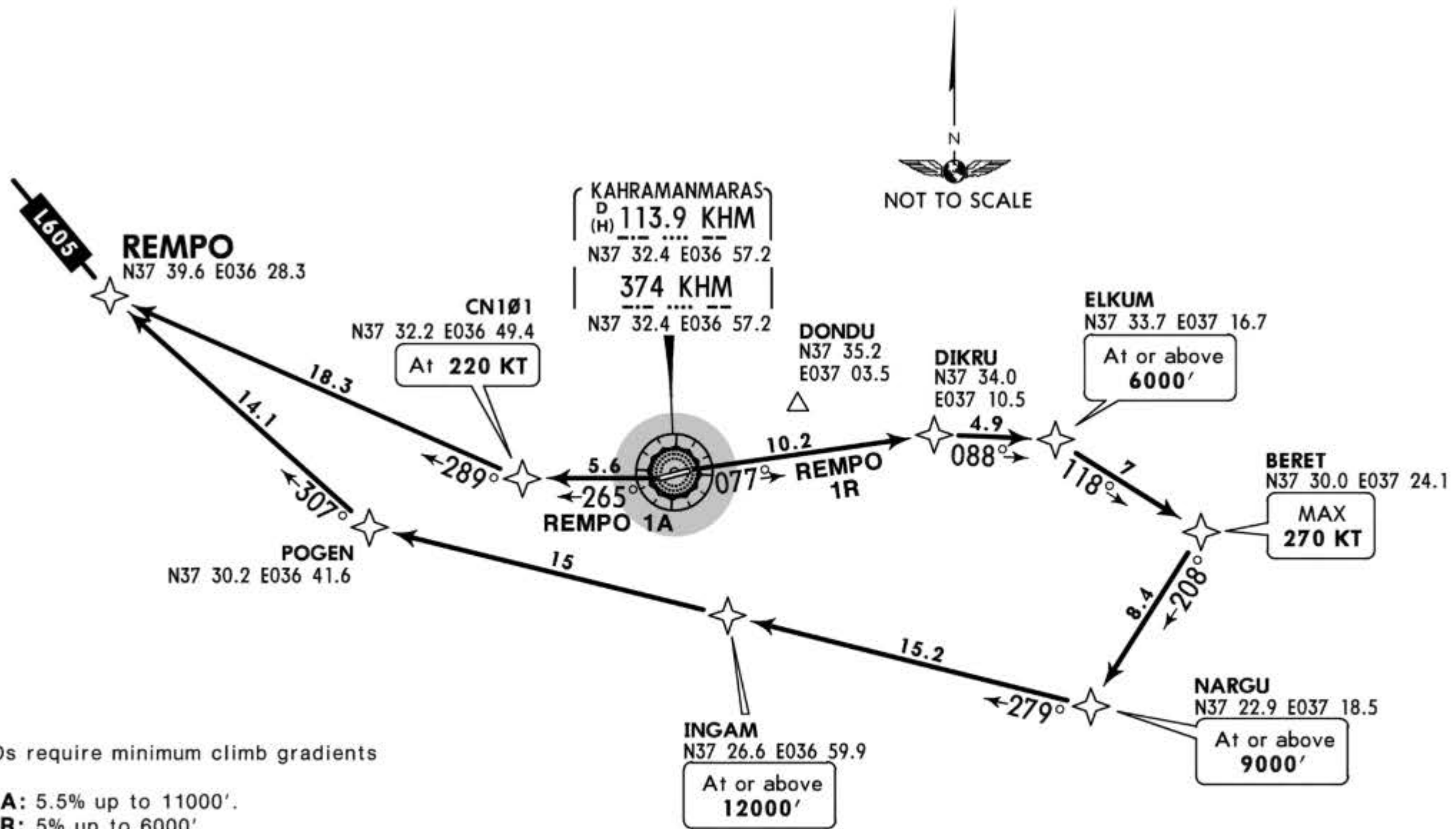
INS COORDINATES

STAND No.	COORDINATES	STAND No.	COORDINATES
APRON A		APRON B	
1,2	N37 32.2 E036 57.6	1,2	N37 32.4 E036 58.0
3 thru 5	N37 32.2 E036 57.5		

Apt Elev
1724'

Trans level: By ATC
1. RNP 1 required.
2. RNAV (GNSS).
Trans alt: 15000'

REMPO 1A [REMP1A]
REMPO 1R [REMP1R]
RWYS 25, 07 RNAV DEPARTURES



These SIDs require minimum climb gradients of
REMPO 1A: 5.5% up to 11000'.
REMPO 1R: 5% up to 6000'

Gnd speed-KT	75	100	150	200	250	300
5% V/V (fpm)	380	506	760	1013	1266	1519
5.5% V/V (fpm)	418	557	835	1114	1392	1671

SID	RWY	ROUTING
REMPO 1A	25	On 265° track to CN101, turn RIGHT to REMPO, then join airway L-605.
REMPO 1R	07	On 077° track to DIKRU, turn RIGHT to ELKUM, turn RIGHT to BERET, turn RIGHT to NARGU, turn RIGHT to INGAM, turn RIGHT to REMPO, then join airway.

