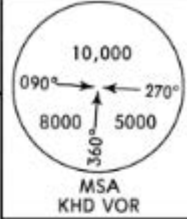
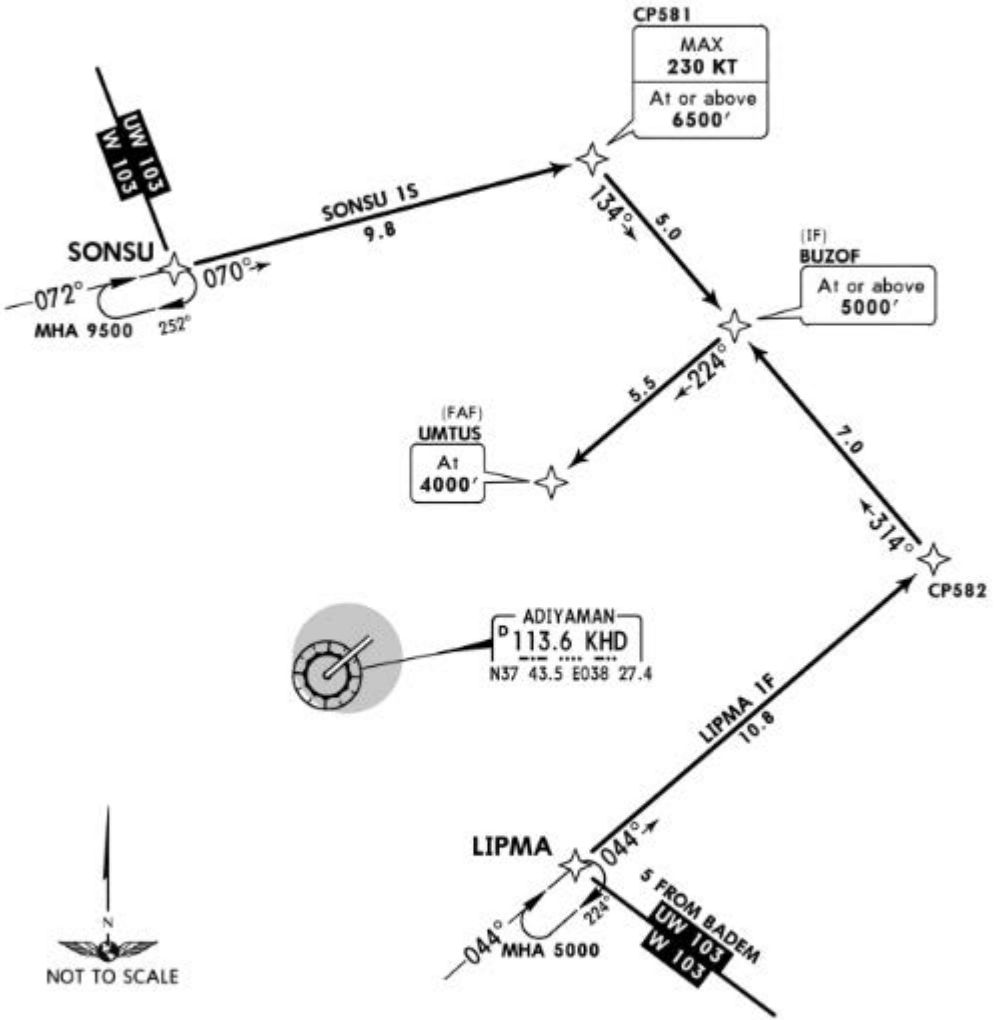


Apt Elev
2212'

Alt Set: hPa Trans level: By ATC Trans alt: 10000'
 1. RNAV (GNSS).
 2. RNAI required otherwise advise ATC.
 3. Descend as cleared.



LIPMA 1F [LIPM1F]
 SONSU 1S [SONS1S]
 RNAV ARRIVALS
 (RWY 22)



ADIYAMAN
 113.6 KHZ
 N37 43.5 E038 27.4

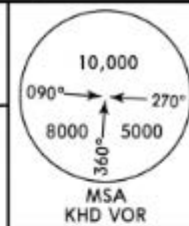


LOST COMMS ▼ LOST COMMS ▼ LOST COMMS ▼ LOST COMMS ▼ LOST COMMS ▼
 IFR flights able to comply RNAV procedure:
 Proceed to SONSU or LIPMA according to STAR
 which is going to be executed. Hold over these
 fixes until commencement of descent and
 execute RNAV approach procedure and land.
 LOST ▲ LOST COMMS ▲ LOST COMMS ▲ LOST COMMS ▲ LOST COMMS ▲

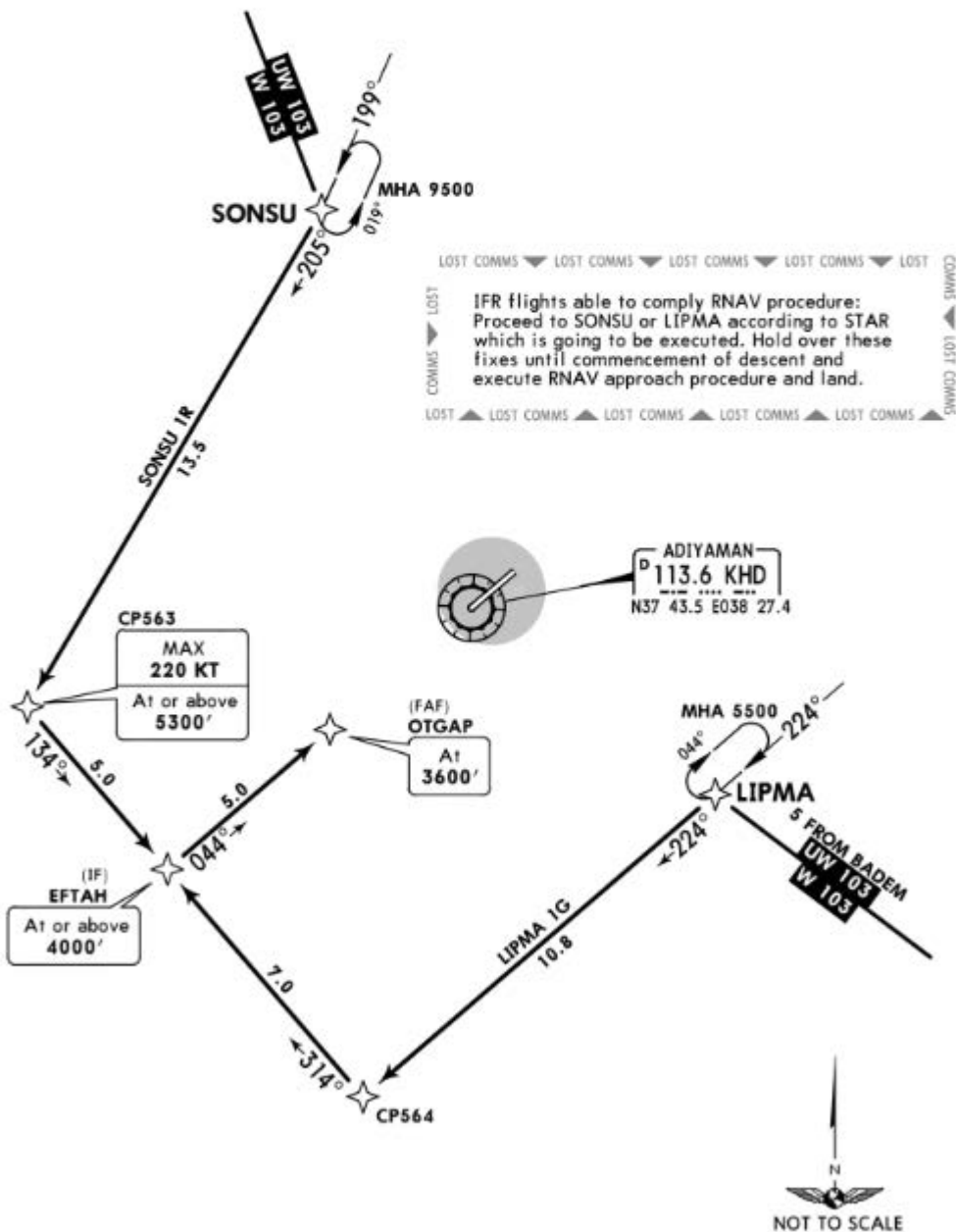
STAR	ROUTING
LIPMA 1F	LIPMA - CP582 - BUZOF (5000'+) - UMTUS (4000').
SONSU 1S	SONSU - CP581 (K230-; 6500'+) - BUZOF (5000'+) - UMTUS (4000').

Apt Elev
2212'

Alt Set: hPa Trans level: By ATC Trans alt: 10000'
1. RNAV (GNSS).
2. RNAV required otherwise advise ATC.
3. Descend as cleared.



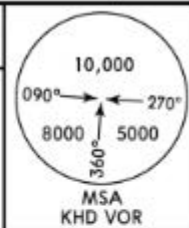
LIPMA 1G [LIPM1G]
SONSU 1R [SONS1R]
RNAV ARRIVALS
(RWY 04)



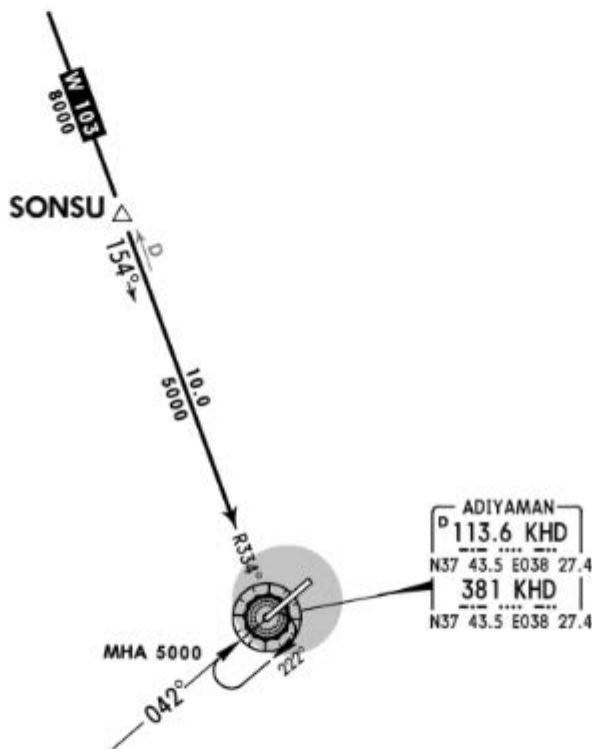
STAR	ROUTING
LIPMA 1G	LIPMA - CP564 - EFTAH (4000'+) - OTGAP (3600').
SONSU 1R	SONSU - CP563 (K220-; 5300'+) - EFTAH (4000'+) - OTGAP (3600').

Apt Elev
2212'

Alt Set: hPa Trans level: By ATC Trans alt: 10000'



SONSU 1G [SONS1G]
RWY 04 ARRIVAL



LOST COMMS ▼ LOST COMMS ▼ LOST COMMS ▼ LOST COMMS ▼ LOST

LOST
COMMS ▼

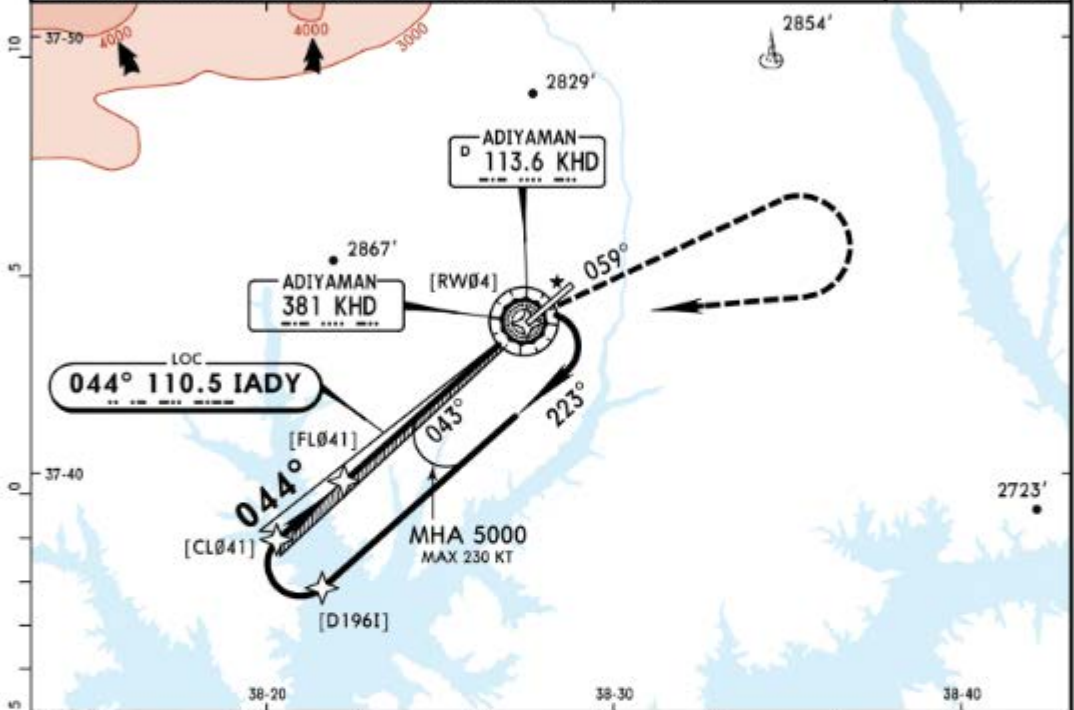
IFR flights unable to comply RNAV procedure:
Proceed to KHD VOR/NDB via STAR SONSU 1G;
hold over this aid until commencement of descent
and execute the Instrument Approach Procedure
(IAP) and land.

LOST ▲ LOST COMMS ▲ LOST COMMS ▲ LOST COMMS ▲ LOST COMMS ▲

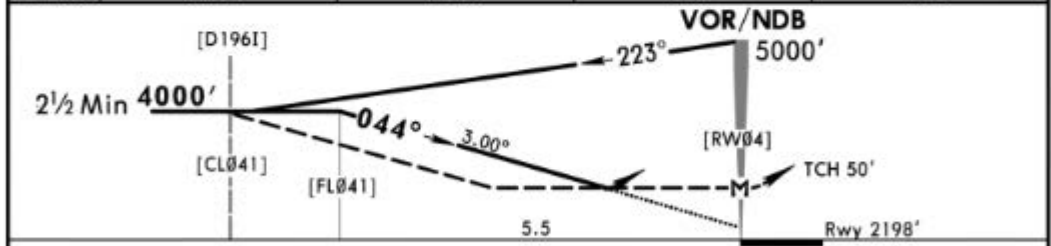
COMMS ▲ LOST COMMS ▲



ERHAC Approach 118.775		*ADIYAMAN Tower 118.0 119.05			*Ground 121.7
LOC IADY 110.5	Final Apch Crs 044°	Minimum Alt No FAF	DA/MDA(H) 2600' (402')	Apt Elev 2212' Rwy 2198'	
MISSED APCH: Climb on R-059 (059° from NDB) to 4000', then turn RIGHT climbing to 5000' to VOR/NDB and hold.					
Alt Set: hPa Rwy Elev: 78 hPa Trans level: By ATC Trans alt: 10000' 1. VOR or NDB required. 2. Racetrack restricted to MAX 185 KT.					MSA KHD VOR/NDB



KHD DME	5.0	4.0	3.0	2.0
ALTITUDE	3850'	3530'	3210'	2890'

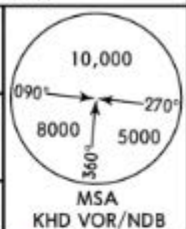


Gnd speed-Kts	70	90	100	120	140	160	HIALS REIL PAPI Refer to Missed Apch above
Descent Angle 3.00°	372	478	531	637	743	849	

PANS OPS	Standard STRAIGHT-IN LANDING RWY 04				CIRCLE-TO-LAND	
	CDFA		non-CDFA		Max Kts	MDA(H) VIS
	DA/MDA(H) 2600' (402')		MDA(H) 2600' (402')			
	ALS out		ALS out		100	2900' (688') 1500m
A	RVR 1500m		RVR 2100m		135	2900' (688') 1600m
B	RVR 1900m		RVR 2300m		180	3300' (1088') 2400m
C	RVR 1900m		RVR 2300m		205	3300' (1088') 3600m
D	RVR 1900m		RVR 2300m			

ERHAC Approach 118.775		*ADIYAMAN Tower 118.0 119.05		*Ground 121.7
---------------------------	--	---------------------------------	--	------------------

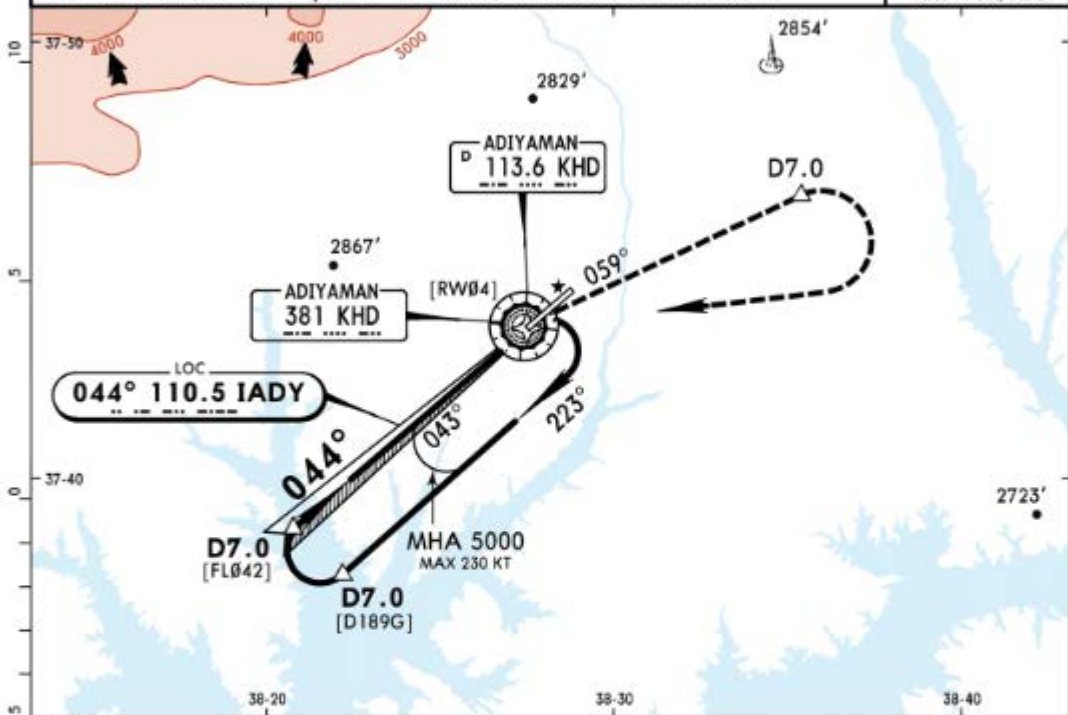
LOC IADY 110.5	Final Apch Crs 044°	Minimum Alt D7.0 4000' (1802')	DA/MDA(H) 2550' (352')	Apt Elev 2212' Rwy 2198'
--------------------------	-------------------------------	---	----------------------------------	-----------------------------



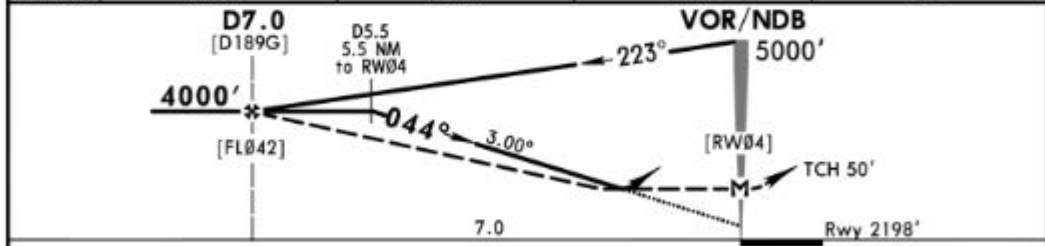
MISSED APCH: Climb on R-059 (059° from NDB) to 4000'. Not later than D7.0 turn RIGHT climbing to 5000' to VOR/NDB and hold.

Alt Set: hPa Rwy Elev: 78 hPa Trans level: By ATC Trans alt: 10000'

1. VOR DME or NDB DME required. 2. Racetrack restricted to MAX 185 KT.



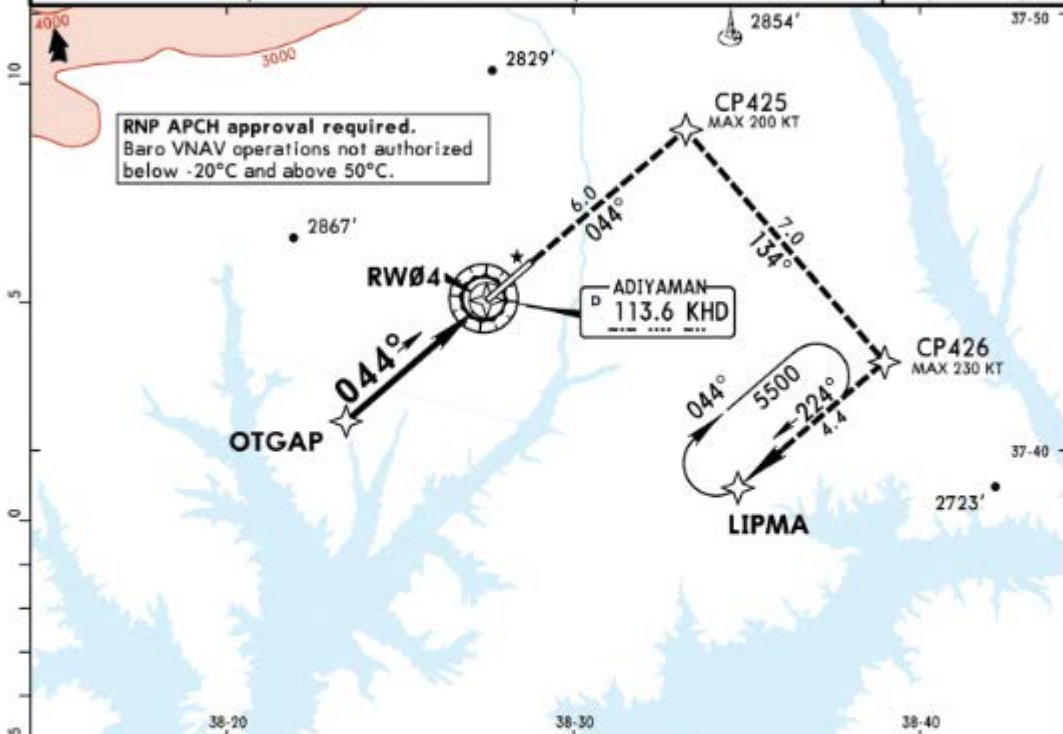
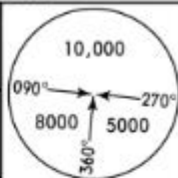
KHD DME	5.0	4.0	3.0	2.0
ALTITUDE	3850'	3530'	3210'	2890'



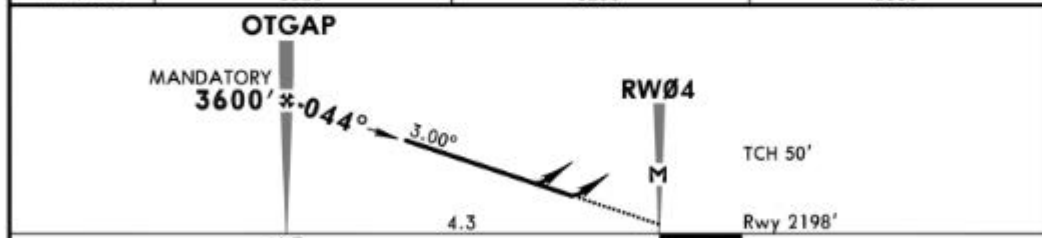
Gnd speed-Kts	70	90	100	120	140	160	HIALS REIL PAPI Refer to Missed Apch above
Descent Angle 3.00°	372	478	531	637	743	849	

Standard STRAIGHT-IN LANDING RWY 04				CIRCLE-TO-LAND	
CDFA DA/MDA(H) 2550' (352')		non-CDFA MDA(H) 2550' (352')		Max Kts	MDA(H) VIS
ALS out		ALS out			
A	RVR 1500m	RVR 1800m		100	2900' (688') 1500m
B				135	2900' (688') 1600m
C	RVR 1600m	RVR 2000m		180	3300' (1088') 2400m
D				205	3300' (1088') 3600m

ERHAC Approach 118.775		*ADIYAMAN Tower 118.0 119.05		*Ground 121.7
RNAV	Final Apch Crs 044°	Mandatory Alt OTGAP 3600' (1402')	LNAV/VNAV DA(H) 2470' (272')	Apt Elev 2212' Rwy 2198'
MISSED APCH: Climb to 5500' to CP425 (MAX 200 KT), then turn RIGHT to CP426 (MAX 230 KT), then turn RIGHT to LIPMA and hold.				
Alt Set: hPa	Rwy Elev: 78 hPa	Trans level: By ATC	Trans alt: 10000'	MSA KHD VOR



DIST to RW04	4.0	3.0	2.0
ALTITUDE	3520'	3200'	2880'



Gnd speed-Kts	70	90	100	120	140	160	HIALS REIL PAPI	5500' ↑ CP425 200 KT MAX
Descent Angle 3.00°	372	478	531	637	743	849		
LNAV/VNAV: MAP at DA								
LNAV: MAP at RW04								

Standard				STRAIGHT-IN LANDING RWY 04		CIRCLE-TO-LAND	
LNAV/VNAV CDFA DA(H) 2470' (272')		LNAV CDFA DA/MDA(H) 2590' (392')		Max Kts	MDA(H)	VIS	
ALS out		ALS out		100	2900' (688')	1500m	
RVR 1300m		RVR 1500m		135	2900' (688')	1600m	
RVR 1300m		RVR 1800m		180	3300' (1088')	2400m	
RVR 1300m		RVR 1800m		205	3300' (1088')	3600m	

PANS OPS

LTCP/ADF
ADIYAMAN

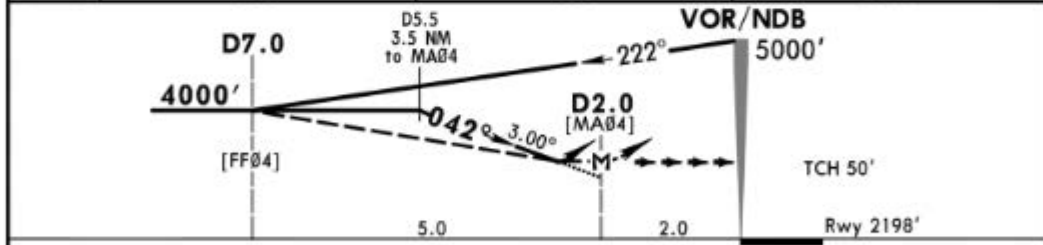
JEPPESEN
28 SEP 18
Eff 11 Oct (13-1)

ADIYAMAN, TURKEY
VOR DME or NDB DME Rwy 04

ERHAC Approach 118.775			*ADIYAMAN Tower 118.0 119.05			*Ground 121.7		
VOR KHD 113.6	NDB KHD 381	Final Apch Crs 042°	Minimum Alt D7.0 4000' (1802')	DA/MDA(H) 2700' (502')	Apt Elev 2212' Rwy 2198'			
<p>MISSED APCH: Climb on R-059 (059° from NDB) to 4000'. Not later than D7.0 turn RIGHT climbing to 5000' to VOR/NDB and hold.</p>								
Alt Set: hPa Rwy Elev: 78 hPa			Trans level: By ATC			Trans alt: 10000'		
Racetrack restricted to MAX 185 KT.								



KHD DME	5.0	4.0	3.0
ALTITUDE	3850'	3530'	3210'



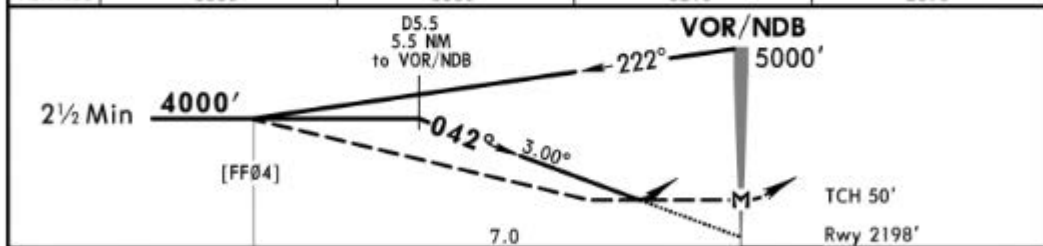
Gnd speed-Kts	70	90	100	120	140	160	HIALS REIL PAPI Refer to Missed Apch above
Descent Angle 3.00°	372	478	531	637	743	849	
MAP at D2.0							

	STRAIGHT-IN LANDING RWY 04				CIRCLE-TO-LAND	
	CDFA		non-CDFA		Max Kts	MDA(H) VIS
A	DA/MDA(H) 2700' (502')		MDA(H) 2700' (502')		100	2900' (688') 1500m
B	ALS out		ALS out		135	2900' (688') 1600m
C	RVR 1500m		RVR 2600m		180	3300' (1088') 2400m
D	RVR 2400m		RVR 2800m		205	3300' (1088') 3600m

ERHAC Approach 118.775			*ADIYAMAN Tower 118.0 119.05			*Ground 121.7		
VOR KHD 113.6	NDB KHD 381	Final Apch Crs 042°	Minimum Alt No FAF	DA/MDA(H) 2700' (502')	Apt Elev 2212' Rwy 2198'			<p>MSA KHD VOR/NDB</p>
<p>MISSED APCH: Climb on R-059 (059° from NDB) to 4000', then turn RIGHT climbing to 5000' to VOR/NDB and hold.</p> <p>Alt Set: hPa Rwy Elev: 78 hPa Trans level: By ATC Trans alt: 10000'</p>								



KHD DME	5.0	4.0	3.0	2.0
ALTITUDE	3850'	3530'	3210'	2890'

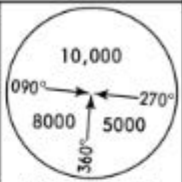


Gnd speed-Kts	70	90	100	120	140	160	HIALS REIL PAPI : :	Refer to Missed Apch above
Descent Angle 3.00°	372	478	531	637	743	849		
MAP at VOR								

PANS OPS	Standard STRAIGHT-IN LANDING RWY 04				CIRCLE-TO-LAND			
	CDFA		non-CDFA					
	DA/MDA(H) 2700' (502')		MDA(H) 2700' (502')					
	ALS out		ALS out		Max Kts	MDA(H)	VIS	
A	RVR 1500m		RVR 2600m		100	2900' (688')	1 1500m	
B	RVR 1500m		RVR 2600m		135	2900' (688')	1 1600m	
C	RVR 2400m		RVR 2800m		180	3300' (1088')	1 2400m	
D	RVR 2400m		RVR 2800m		205	3300' (1088')	3600m	

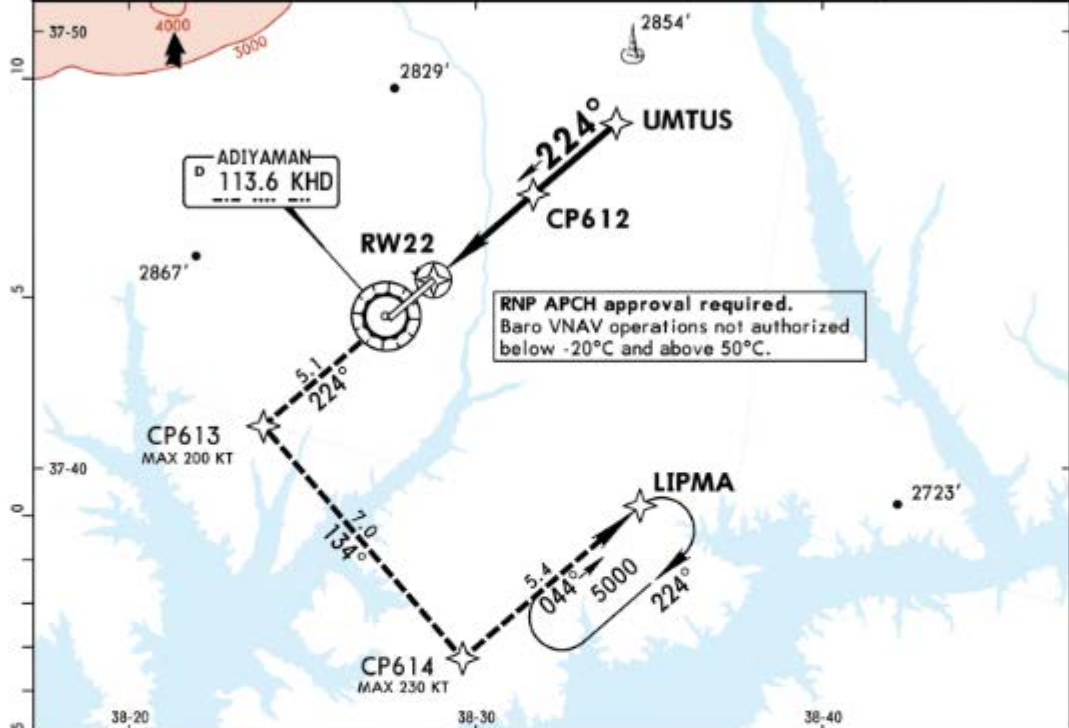
ERHAC Approach 118.775		*ADIYAMAN Tower 118.0 119.05		*Ground 121.7
----------------------------------	--	---	--	-------------------------

RNAV	Final ApcH Crs 224°	Mandatory Alt UMTUS 4000' (1795')	LNAV/VNAV DA(H) 2510' (305')	Apt Elev 2212' Rwy 2205'
------	----------------------------------	--	---	-----------------------------



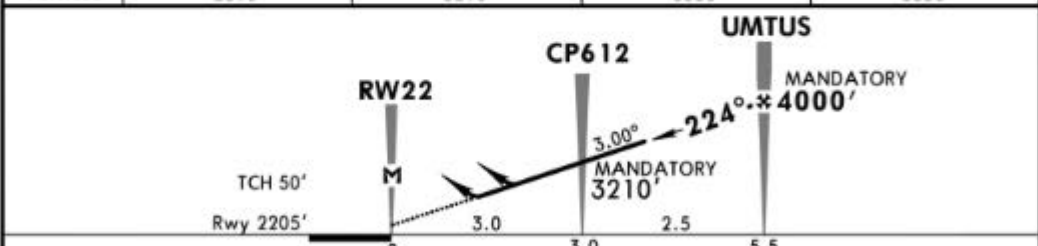
MISSED APCH: Climb to 5000' to CP613 (MAX 200 KT), then turn LEFT to CP614 (MAX 230 KT), then turn LEFT to LIPMA and hold.

Alt Set: hPa Rwy Elev: 78 hPa Trans level: By ATC Trans alt: 10000' MSA KHD VOR



RNP APCH approval required.
Baro VNAV operations not authorized below -20°C and above 50°C.

DIST to RW22	2.0	3.0	4.0	5.0
ALTITUDE	2890'	3210'	3530'	3850'



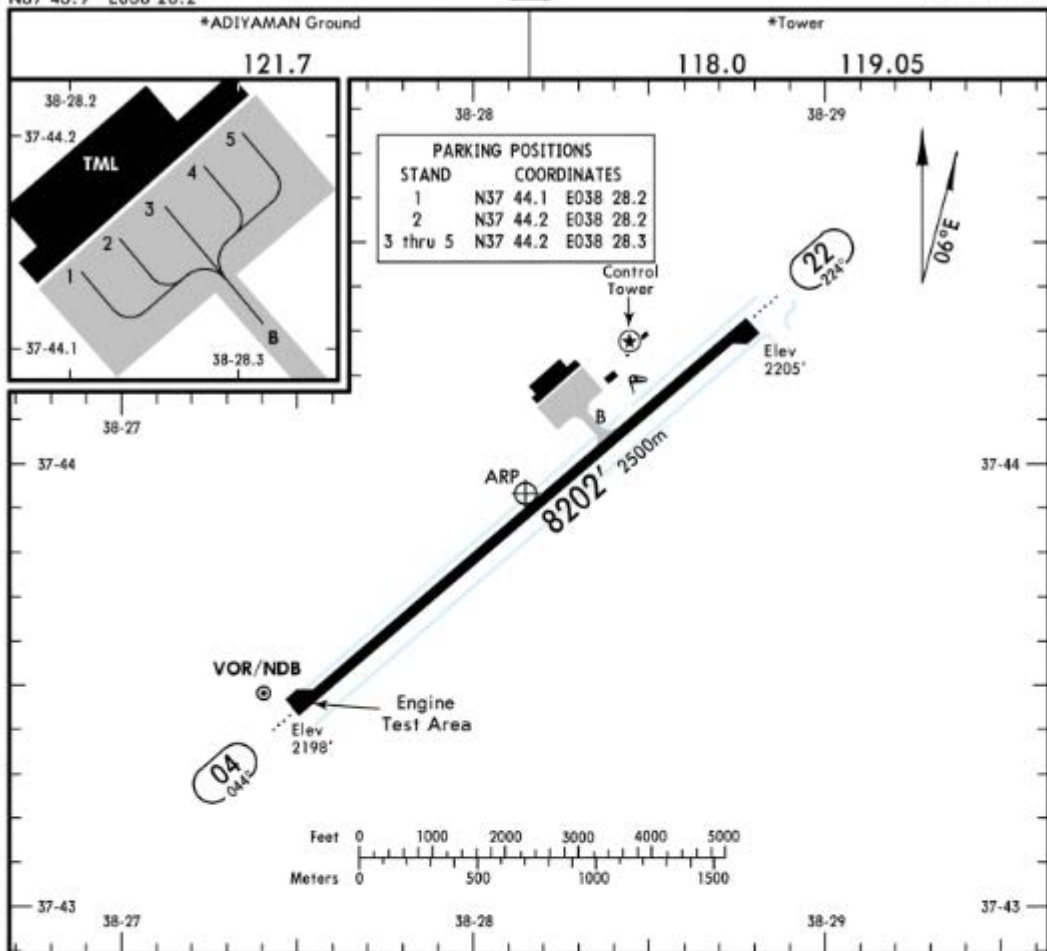
Gnd speed-Kts	70	90	100	120	140	160	HIALS REIL PAPI	5000'	CP613	200 KT MAX
Descent Angle 3.00°	372	478	531	637	743	849				
LNAV/VNAV: MAP at DA										

PANS OPS	Standard STRAIGHT-IN LANDING RWY 22				CIRCLE-TO-LAND			
	LNAV/VNAV CDFA DA(H) 2510' (305')		LNAV CDFA DA/MDA(H) 2590' (385')		Max Kts		MDA(H) VIS	
	ALS out		ALS out		100	2900' (688')		1500m
	RVR 1400m		RVR 1500m		135	2900' (688')		1600m
	RVR 1400m		RVR 1800m		180	3300' (1088')		2400m
				205	3300' (1088')		3600m	

LTCP/ADF
 Apt Elev **2212'**
 N37 43.9 E038 28.2

JEPPESEN
 9 NOV 18 **(10-9)**

ADIYAMAN, TURKEY
ADIYAMAN



ADDITIONAL RUNWAY INFORMATION

RWY	USABLE LENGTHS	LANDING BEYOND		TAKE-OFF	WIDTH
		Threshold	Glide Slope		
04 22	HIRL (60m) HIALS SFL REIL PAPI-L (angle 3.0°)	8153' 2485m		1	148' 45m

1 TAKE-OFF RUN AVAILABLE

RWY 22: From rwy head 8202' (2500m)
 twy B int 5732' (1747m)

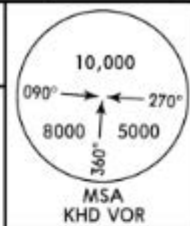
Standard

TAKE-OFF

	Low Visibility Take-off	Day: RL or RCLM Night: RL	Adequate vis ref (Day only)
A	Day: RL & RCLM Night: RL	Day: RL or RCLM Night: RL	
B			
C	RVR 300m	400m	500m
D			

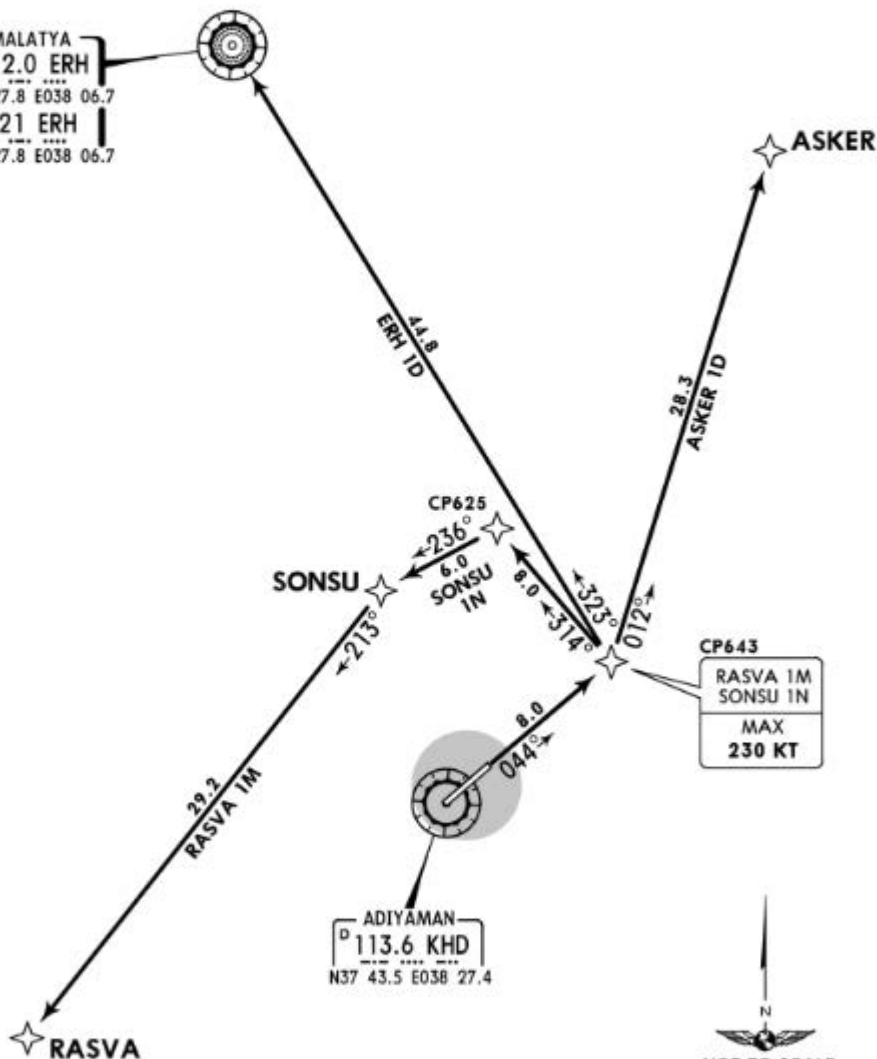
Apt Elev
2212'

Trans level: By ATC Trans alt: 10000'
1. RNAV (GNSS).
2. RNP1 required otherwise advise ATC.



ASKER 1D [ASKE1D]
ERH 1D [ERH1D]
RASVA 1M [RASV1M]
SONSU 1N [SONS1N]
RWY 04 RNAV DEPARTURES

MALATYA
D 112.0 ERH
N38 27.8 E038 06.7
421 ERH
N38 27.8 E038 06.7



ADIYAMAN
D 113.6 KHD
N37 43.5 E038 27.4



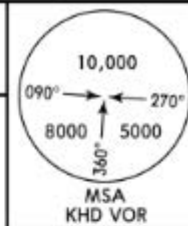
These SIDs require a minimum climb gradient of 5% up to 8000'.

Gnd speed-KT	75	100	150	200	250	300
5.0% V/V (fpm)	380	506	760	1013	1266	1519

SID	ROUTING
ASKER 1D	Climb on 044° track to CP643, turn LEFT to ASKER.
ERH 1D	Climb on 044° track to CP643, turn LEFT to ERH VOR.
RASVA 1M	Climb on 044° track to CP643, turn LEFT to CP625, turn LEFT to SONSU, turn LEFT to RASVA.
SONSU 1N	Climb on 044° track to CP643, turn LEFT to CP625, turn LEFT to SONSU.

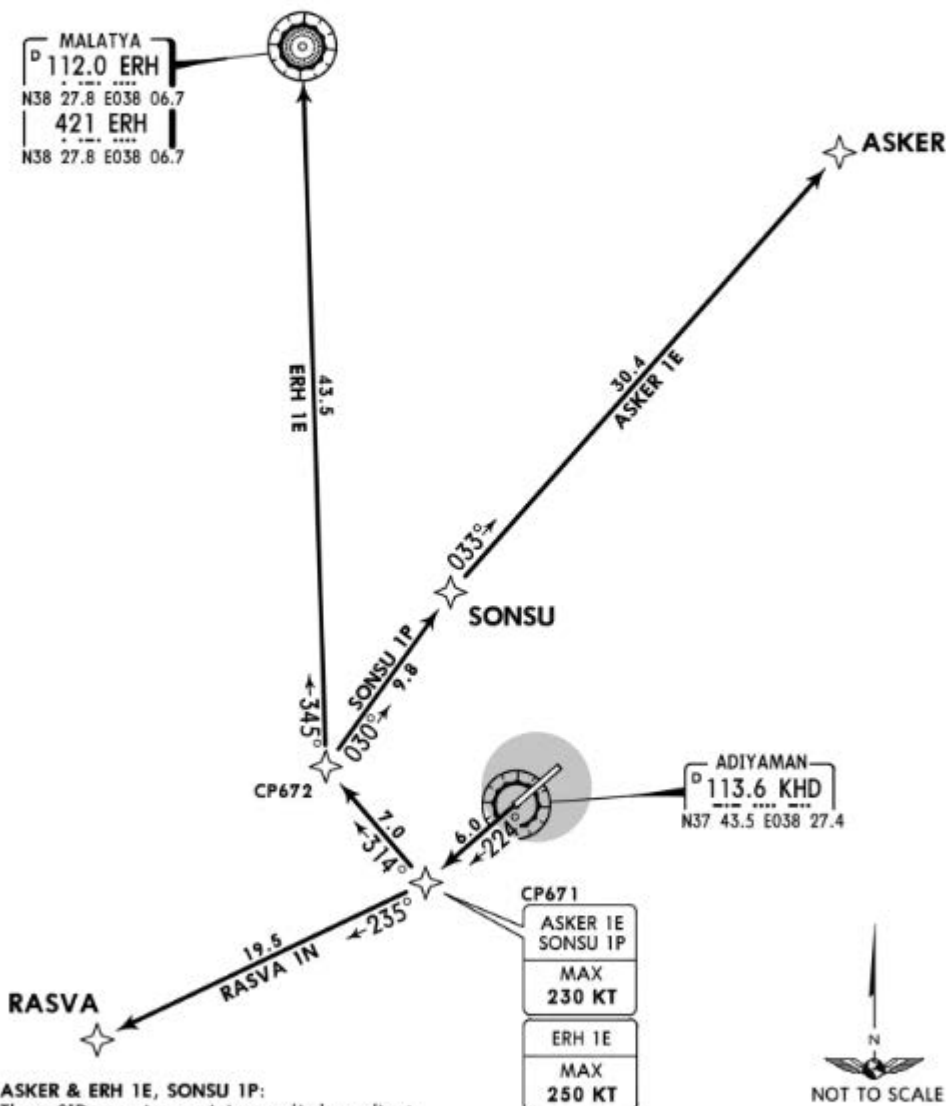
Apt Elev
2212'

Trans level: By ATC Trans alt: 10000'
1. RNAV (GNSS).
2. RNP1 required otherwise advise ATC.



ASKER 1E [ASKE1E]
ERH 1E [ERH1E]
RASVA 1N [RASVIN]
SONSU 1P [SONS1P]
RWY 22 RNAV DEPARTURES

MALATYA
D 112.0 ERH
N38 27.8 E038 06.7
421 ERH
N38 27.8 E038 06.7



ADIYAMAN
D 113.6 KHD
N37 43.5 E038 27.4

CP671
ASKER 1E
SONSU 1P
MAX
230 KT
ERH 1E
MAX
250 KT



ASKER & ERH 1E, SONSU 1P:
These SIDs require a minimum climb gradient
of 4.0% up to 8500'.

Gnd speed-KT	75	100	150	200	250	300
4.0% V/V (fpm)	304	405	608	810	1013	1215

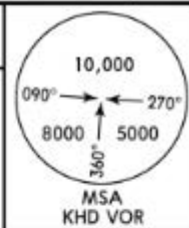
SID

ROUTING

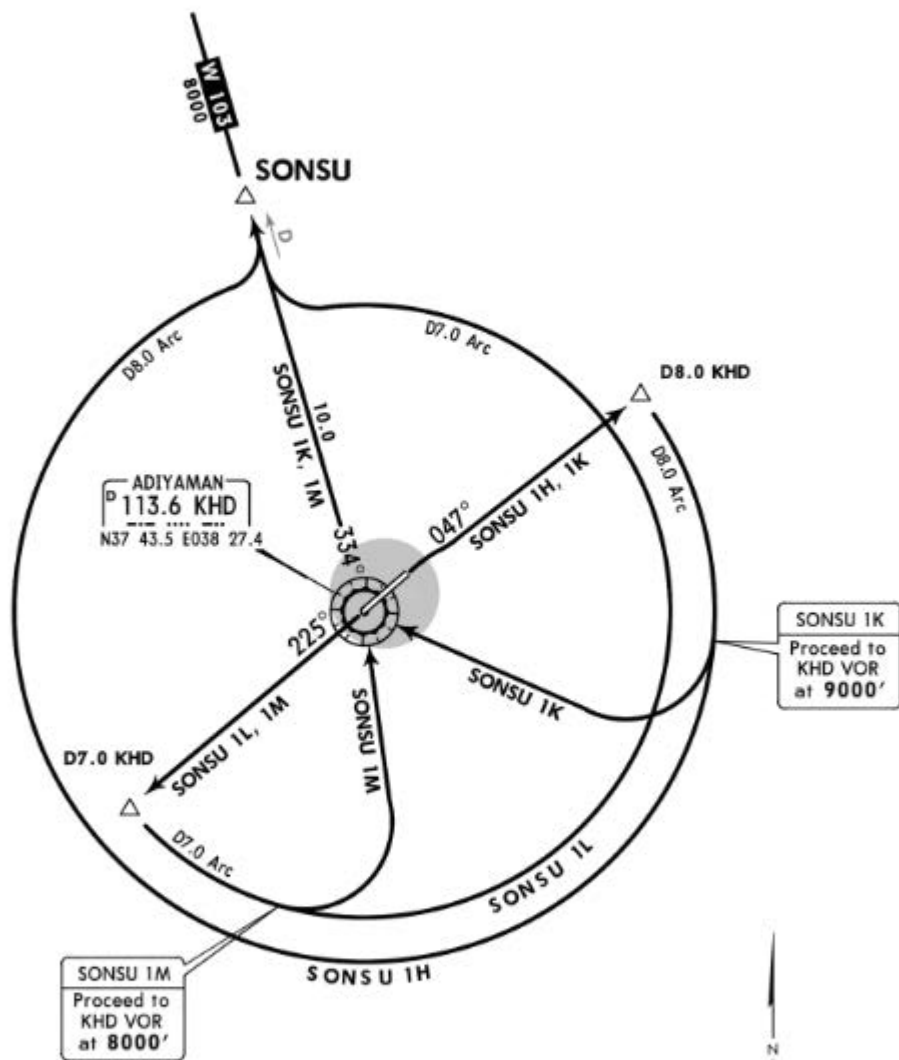
ASKER 1E	Climb on 224° track to CP671, turn RIGHT to CP672, turn RIGHT to SONSU, turn RIGHT to ASKER.
ERH 1E	Climb on 224° track to CP671, turn RIGHT to CP672, turn RIGHT to ERH VOR.
RASVA 1N	Climb on 224° track to CP671, turn RIGHT to RASVA.
SONSU 1P	Climb on 224° track to CP671, turn RIGHT to CP672, turn RIGHT to SONSU.

Apt Elev
2212'

Trans level: By ATC Trans alt: 10000'



SONSU 1H [SONS1H]
SONSU 1K
SONSU 1L [SONS1L]
SONSU 1M
DEPARTURES



NOT TO SCALE

SID	RWY	ROUTING
SONSU 1H	04	Intercept KHD R-047 to D8.0 KHD, turn RIGHT, along KHD D8.0 Arc, intercept KHD R-334 to SONSU, join airway.
SONSU 1K		Intercept KHD R-047 to D8.0 KHD, turn RIGHT, along KHD D8.0 Arc, at 9000' proceed to KHD VOR, KHD R-334 to SONSU, join airway.
SONSU 1L	22	Intercept KHD R-225 to D7.0 KHD, turn LEFT, along KHD D7.0 Arc, intercept KHD R-334 to SONSU, join airway.
SONSU 1M		Intercept KHD R-225 to D7.0 KHD, turn LEFT, along KHD D7.0 Arc, at 8000' proceed to KHD VOR, KHD R-334 to SONSU, join airway.