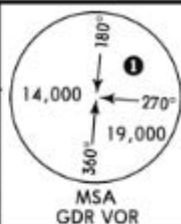


YEREVAN  
Approach  
126.0

Apt Elev  
3101'

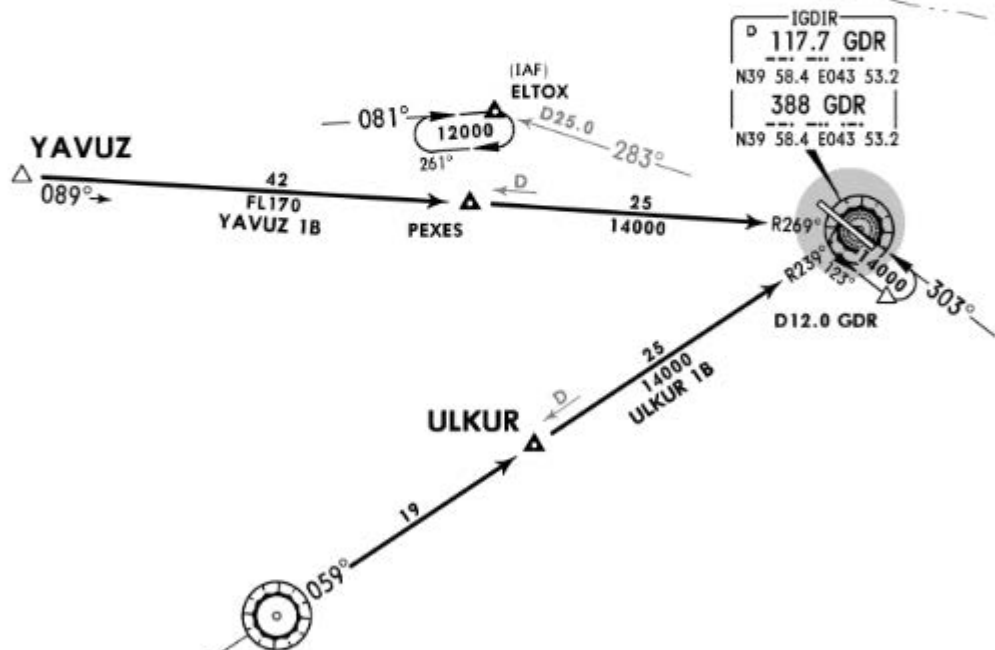
Alt Set: hPa  
Trans level: by ATC Trans alt: 19000'



1 No MSA published

**ULKUR 1B [ULKU1B]  
YAVUZ 1B [YAVU1B]  
ARRIVALS**

**CAUTION**  
If operational reasons dictate border crossing, IMMEDIATELY contact YEREVAN Approach.



AGRI  
116.7 ARI  
N39 38.7 E043 01.6

IGDIR  
117.7 GDR  
N39 58.4 E043 53.2  
388 GDR  
N39 58.4 E043 53.2

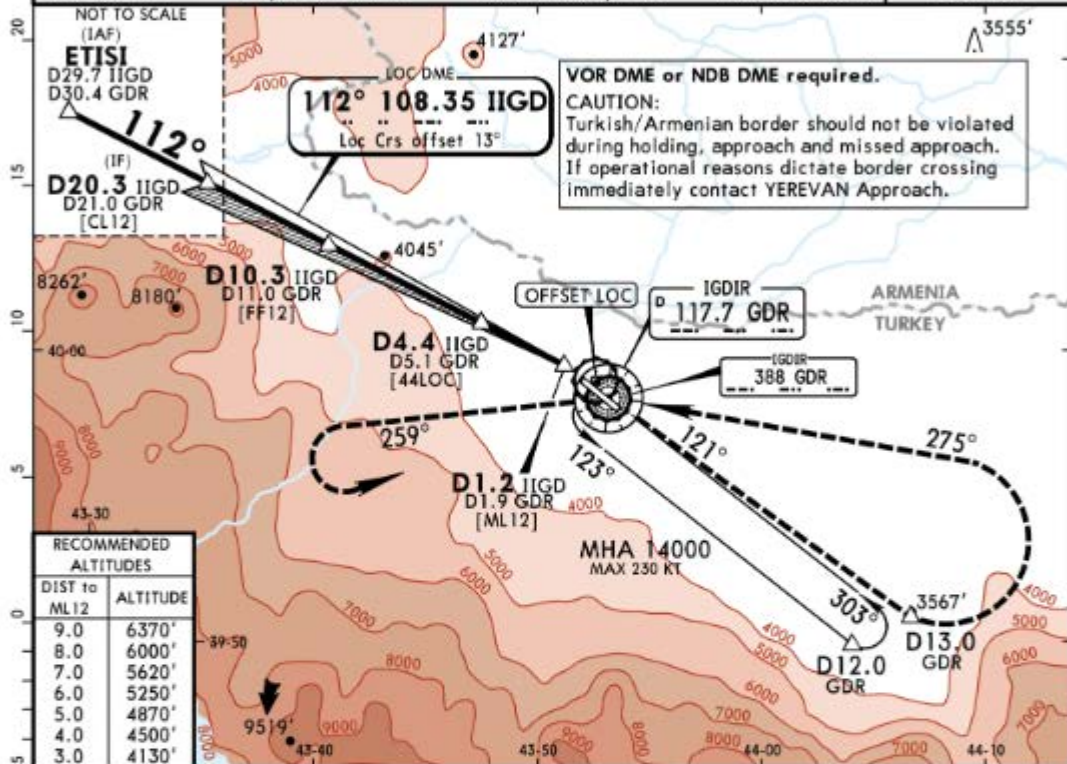
LOST COMMS ▼ LOST COMMS ▼ LOST COMMS ▼ LOST COMMS ▼ LOST COMMS

LOST COMMS ▲ LOST COMMS ▲ LOST COMMS ▲ LOST COMMS ▲ LOST COMMS ▲

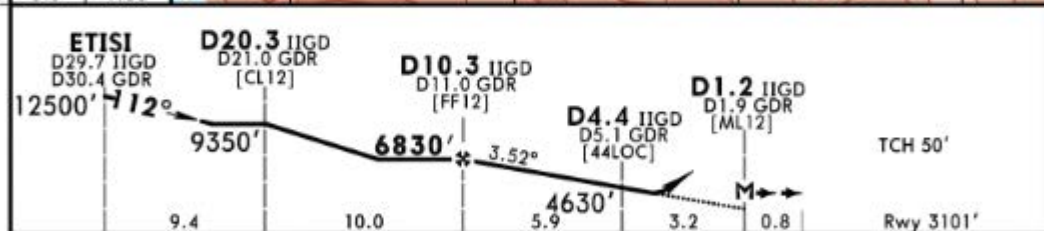
**Flights unable to comply RNAV procedure:**  
Proceed to GDR VOR/NDB via STARs procedures. Hold over this aid until commencement of descent and execute the Instrument Approach Procedure (IAP) and land.

**Flights able to comply RNAV procedure:**  
Proceed to ELTOX (IAF). Hold over this fix until commencement of descent and execute RNAV approach procedure and land.

*IGDIR Approach		*YEREVAN Approach		*IGDIR Tower		*Ground	
119.6		126.0		121.3		121.8	
LOC IIGD	Final Appch Crs	Minimum Alt	DA/MDA(H)	Apt Elev 3101'			
<b>108.35</b>	<b>112°</b>	<b>D10.3 IIGD</b> 6830' (3729')	<b>3940'</b> (839')	Rwy 3101'			
<b>MISSED APCH:</b> Climb on R-121. At D13.0 GDR turn LEFT climbing to 14000' proceed on R-095 inbound VOR and hold. If unable to reach 14000' climb on R-259 after passing 11250', then turn LEFT to VOR and hold. MAX 185 KT until inbound VOR.							
Alt Set: hPa		Rwy Elev: 109 hPa		Trans level: By ATC		Trans alt: 19000'	



RECOMMENDED ALTITUDES	
DIST to ML12	ALTITUDE
9.0	6370'
8.0	6000'
7.0	5620'
6.0	5250'
5.0	4870'
4.0	4500'
3.0	4130'



Gnd speed-Kts	70	90	100	120	140	160	REIL PAPI HIALS	<b>185 KT</b> MAX	<b>D13.0</b> ↑ on <b>117.7</b> R-121
Descent Angle	3.52°	436	561	623	748	872			
MAP at D1.2 IIGD/D1.9 GDR									

<b>Standard</b> STRAIGHT-IN LANDING RWY 12 CDFA DA/MDA(H) <b>3940'</b> (839')		CIRCLE-TO-LAND CAUTION: Not authorized Northeast of airport.	
ALS out		Max Kts	MDA(H) VIS
A	RVR 1500m	100	5020' (1919') 1500m
B	RVR 1500m	135	5020' (1919') 1600m
C	RVR 3100m	180	5020' (1919') <b>2400m</b>
D	RVR 3800m	205	5020' (1919') <b>3600m</b>

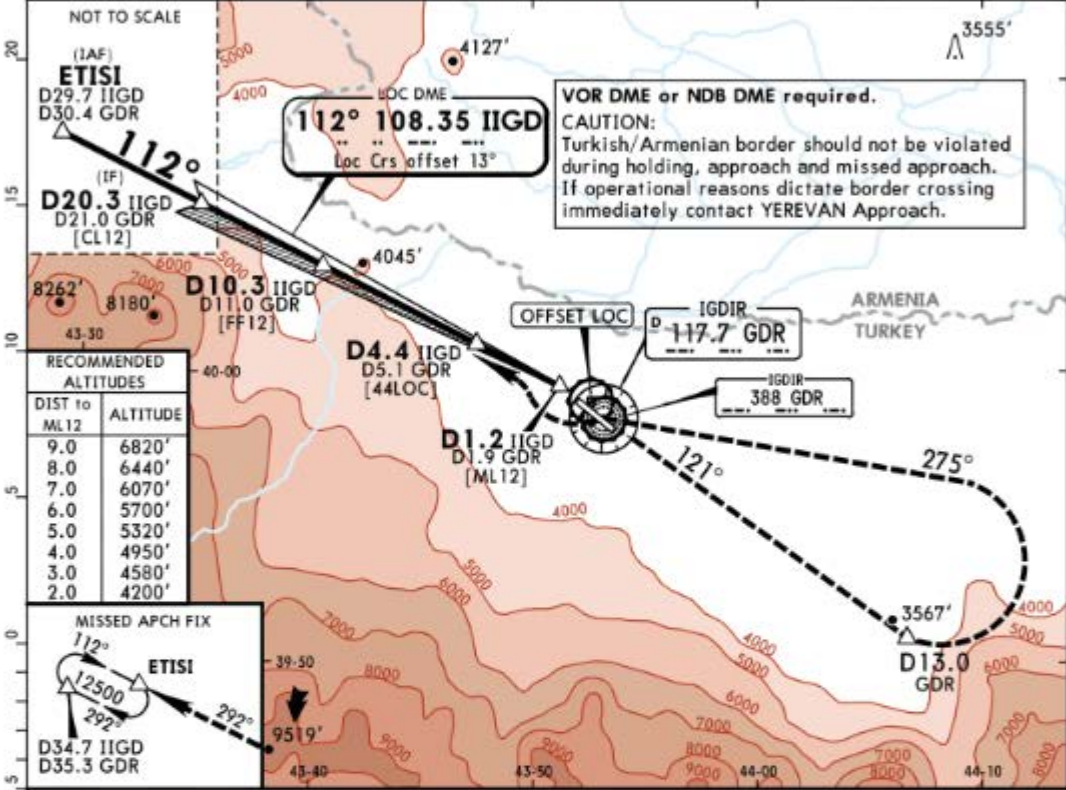
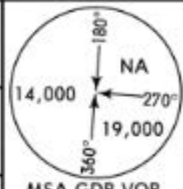
PANS OPS

**1** or higher straight-in minimums.

*IGDIR Approach		*YEREVAN Approach		*IGDIR Tower		*Ground	
119.6		126.0		121.3		121.8	
LOC IIGD	Final Apch Crs	Minimum Alt	DA/MDA(H)	Apt Elev	3101'		
<b>108.35</b>	<b>112°</b>	<b>D10.3 IIGD</b> 6830' (3729')	<b>3940'</b> (839')	Rwy	3101'		

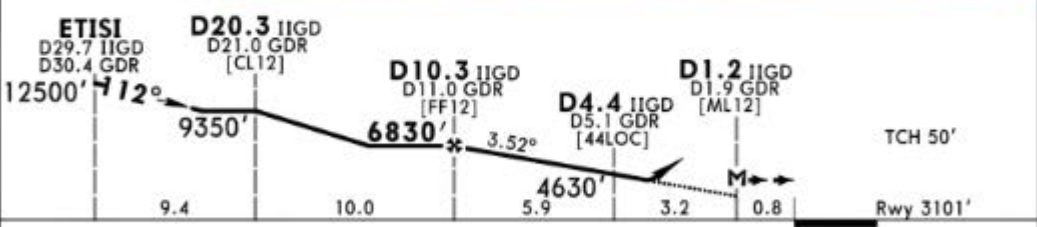
**MISSED APCH:** Climb on R-121. At D13.0 GDR turn LEFT intercept R-095 inbound VOR, then turn RIGHT intercept to R-292 proceed ETISI and hold over ETISI at minimum 12500'. MAX 185 KT until inbound VOR.

Alt Set: hPa Rwy Elev: 109 hPa Trans level: By ATC Trans alt: 19000' MSA GDR VOR



RECOMMENDED ALTITUDES

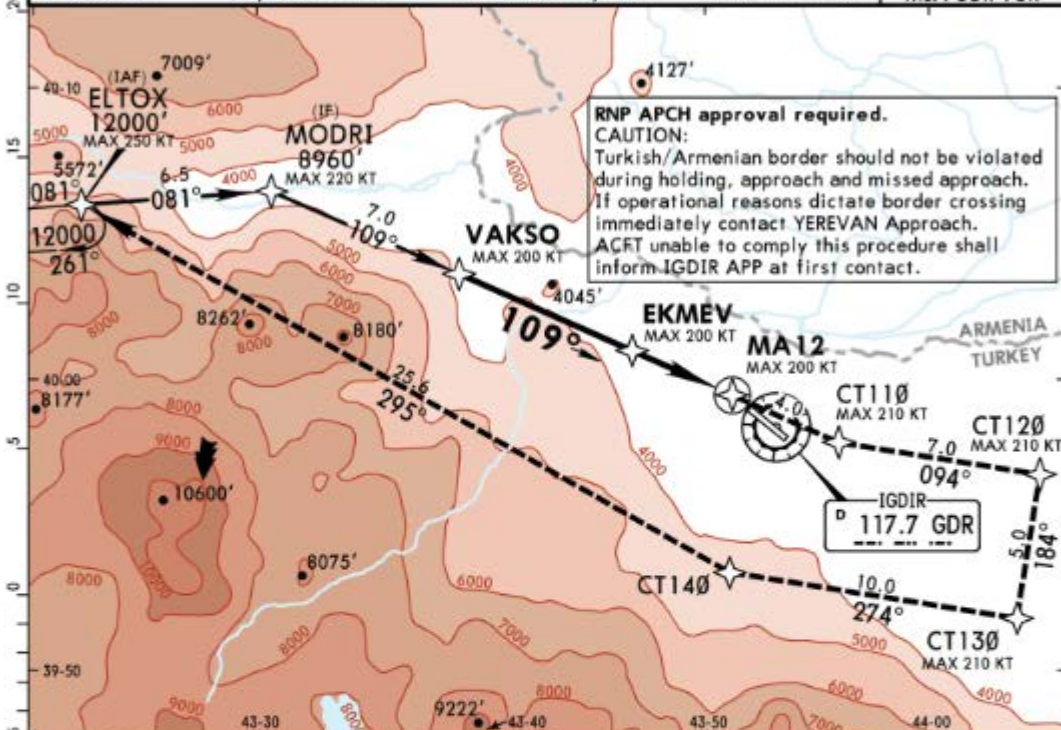
DIST to ML12	ALTITUDE
9.0	6820'
8.0	6440'
7.0	6070'
6.0	5700'
5.0	5320'
4.0	4950'
3.0	4580'
2.0	4200'



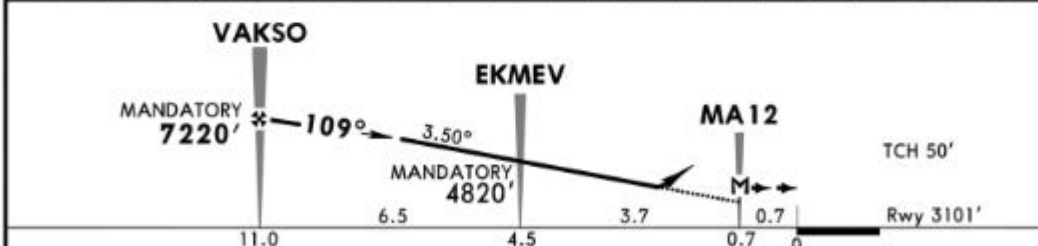
Gnd speed-Kts	70	90	100	120	140	160	HIALS REIL PAPI	185 KT MAX	D13.0 GDR on R-121
Descent Angle	3.52°	436	561	623	748	872			

<b>Standard</b> STRAIGHT-IN LANDING RWY 12				CIRCLE-TO-LAND CAUTION: Not authorized Northeast of airport.			
CDFA DA/MDA(H) <b>3940'</b> (839')				ALS out			
PANS OPS	A	RVR 1500m		Max Kts	MDA(H)	VIS	
	B	RVR 1500m		100	5020' (1919')	1500m	
	C	RVR 3100m	RVR 3800m	135	5020' (1919')	1600m	
	D	RVR 3100m	RVR 3800m	180	5020' (1919')	2400m	
				205	5020' (1919')	3600m	

*IGDIR Approach		*YEREVAN Approach		*IGDIR Tower		*Ground	
119.6		126.0		121.3		121.8	
RNAV	Final Apch Crs 109°	Mandatory Alt <b>VAKSO</b> 7220' (4119')	LNAV DA/MDA(H) <b>3900'</b> (799')	Apt Elev 3101'	Rwy 3101'		
<b>MISSED APCH:</b> Climb to 12000' proceed CT110 (MAX 210 KT), then turn LEFT to CT120 (MAX 210 KT), then turn RIGHT to CT130 (MAX 210 KT), turn RIGHT to CT140 turn RIGHT to ELTOX and hold.							
Alt Set: hPa		Rwy Elev: 109 hPa		Trans level: By ATC		Trans alt: 19000'	
							MSA GDR VOR



DIST to THR	10.0	9.0	8.0	7.0	6.0	5.0	4.0	3.0	2.0	1.0
ALTITUDE	6860'	6490'	6110'	5740'	5370'	5000'	4630'	4260'	3890'	3520'



Gnd speed-Kts	70	90	100	120	140	160			
Descent Angle 3.50°	434	557	619	743	867	991			
MAP at MA12									

<b>Standard</b> STRAIGHT-IN LANDING RWY 12 LNAV CDFA DA/MDA(H) <b>3900'</b> (799')				TCH 50' Rwy 3101'	
ALS out				Max Kts: _____ MDA(H): _____ VIS: _____	
A	RVR 1500m			100	5020' (1919') 1500m
B	RVR 1500m			135	5020' (1919') 1600m
C	RVR 2900m	RVR 3600m		180	5020' (1919') 2400m
D	RVR 3600m			205	5020' (1919') 3600m

PANS OPS

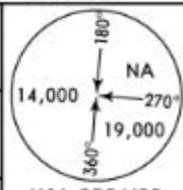
or higher straight-in minimums.

CHANGES: PAPI-L. Minimums.

© JEPPESEN, 2017, 2018. ALL RIGHTS RESERVED.

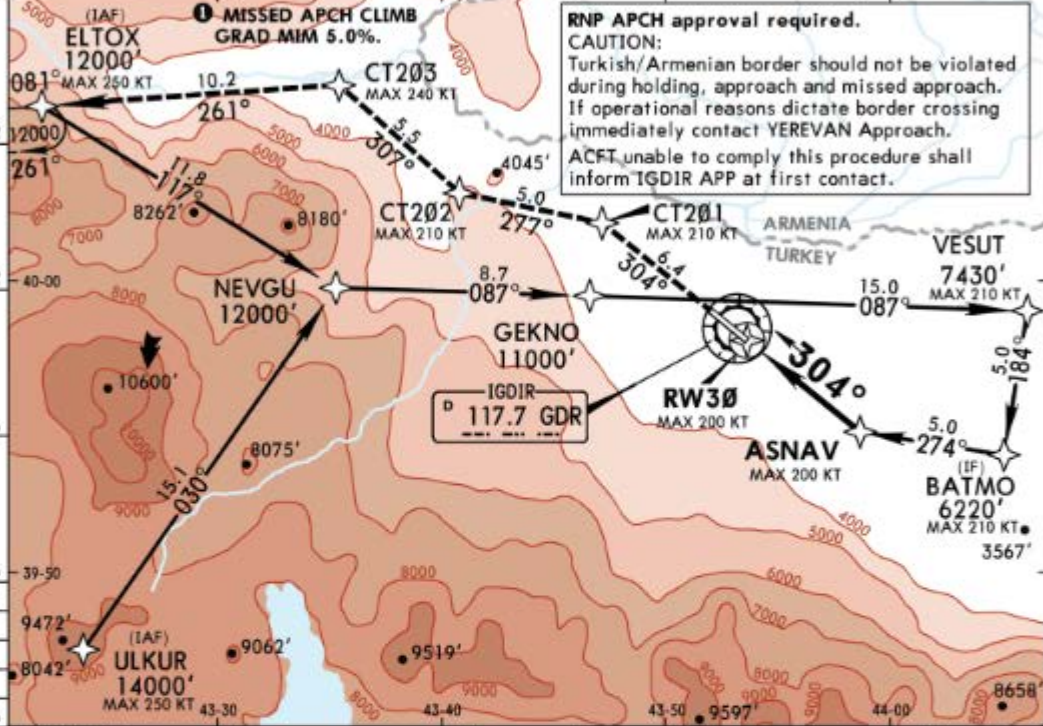
*IGDIR Approach	*YEREVAN Approach	*IGDIR Tower	*Ground
119.6	126.0	121.3	121.8

RNAV	Final Apch Crs <b>304°</b>	Mandatory Alt <b>ASNAV</b> 4960' (1901')	LNAV DA/MDA(H) <b>3900'</b> (841')	Apt Elev 3101' Rwy 3059'
------	-------------------------------	--	--	-----------------------------

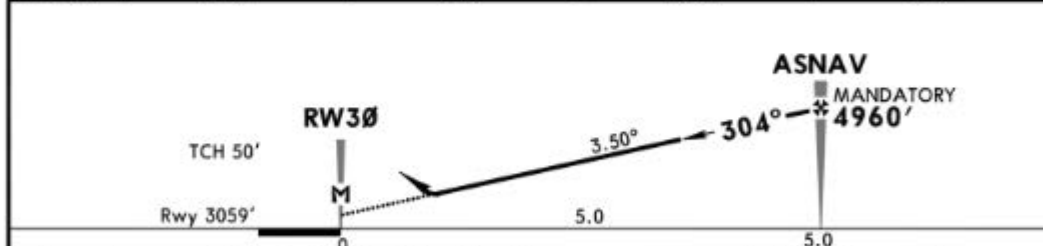


**MISSED APCH:** Climb to 12000' proceed CT201 (MAX 210 KT), then turn LEFT to CT202 (MAX 210 KT), then turn RIGHT to CT203 (MAX 240 KT), turn LEFT to ELTOX and hold.

Alt Set: hPa Rwy Elev: 107 hPa Trans level: By ATC Trans alt: 19000' MSA GDR VOR



DIST to RW30	1.0	2.0	3.0	4.0
ALTITUDE	3480'	3850'	4220'	4590'

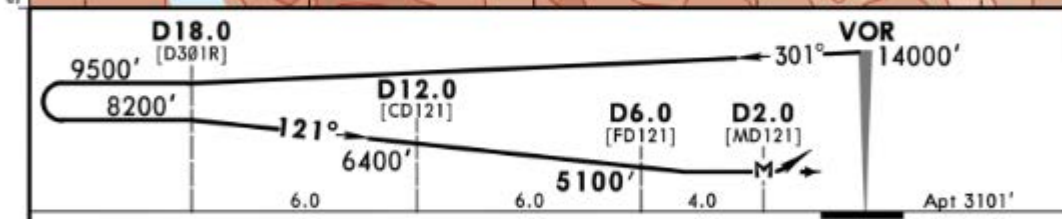
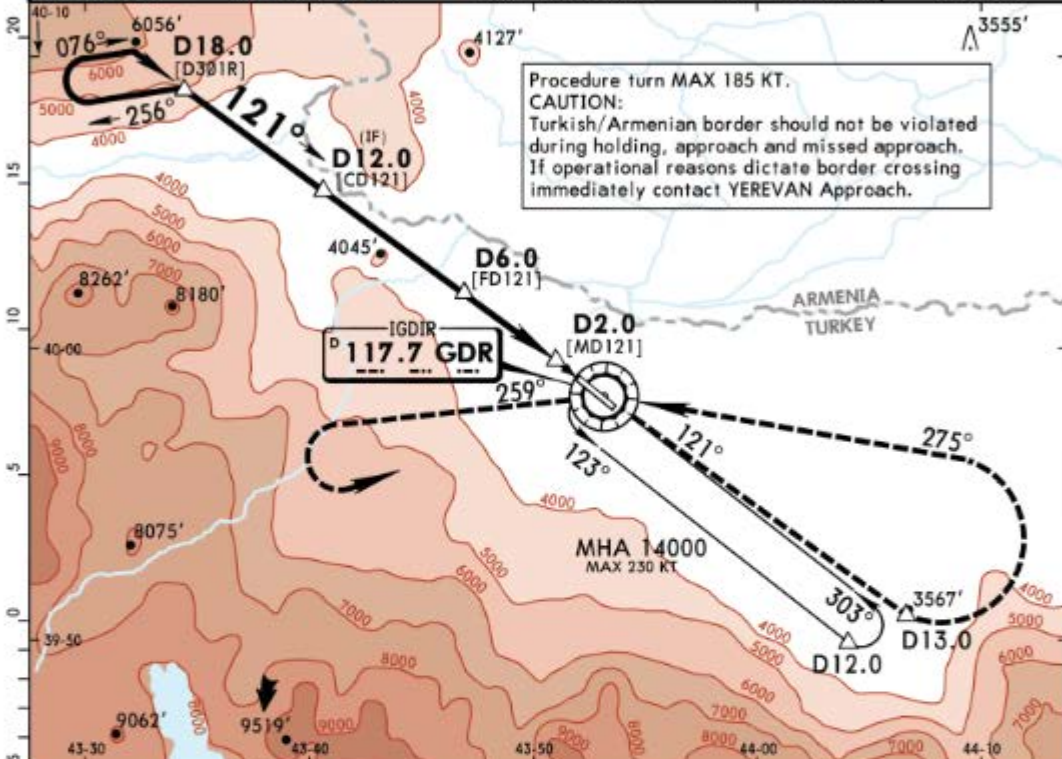
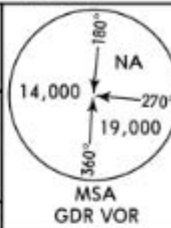


Gnd speed-Kts	70	90	100	120	140	160	HIALS REIL PAPI	210 KT MAX	CT201 ↑
Descent Angle	3.50°	434	557	619	743	867			

**Standard** STRAIGHT-IN LANDING RWY 30  
LNAV  
Missed apch climb grad mim 5.0%  
CDFA  
DA/MDA(H) **3900'** (841')

PANS OPS	A	RVR 1500m	Max Kts	MDA(H)	VIS
	B		100	5020' (1919')	1500m
	C	RVR 2400m	135	5020' (1919')	1600m
	D		180	5020' (1919')	2400m
			205	5020' (1919')	3600m

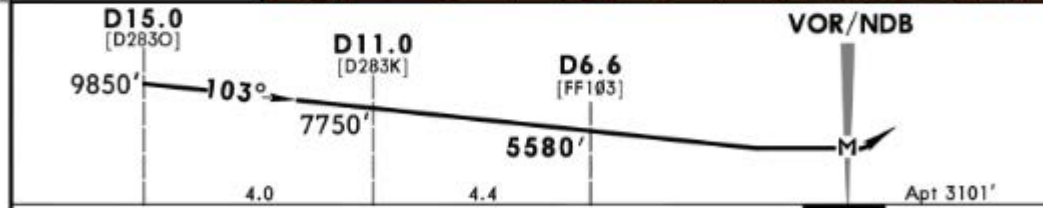
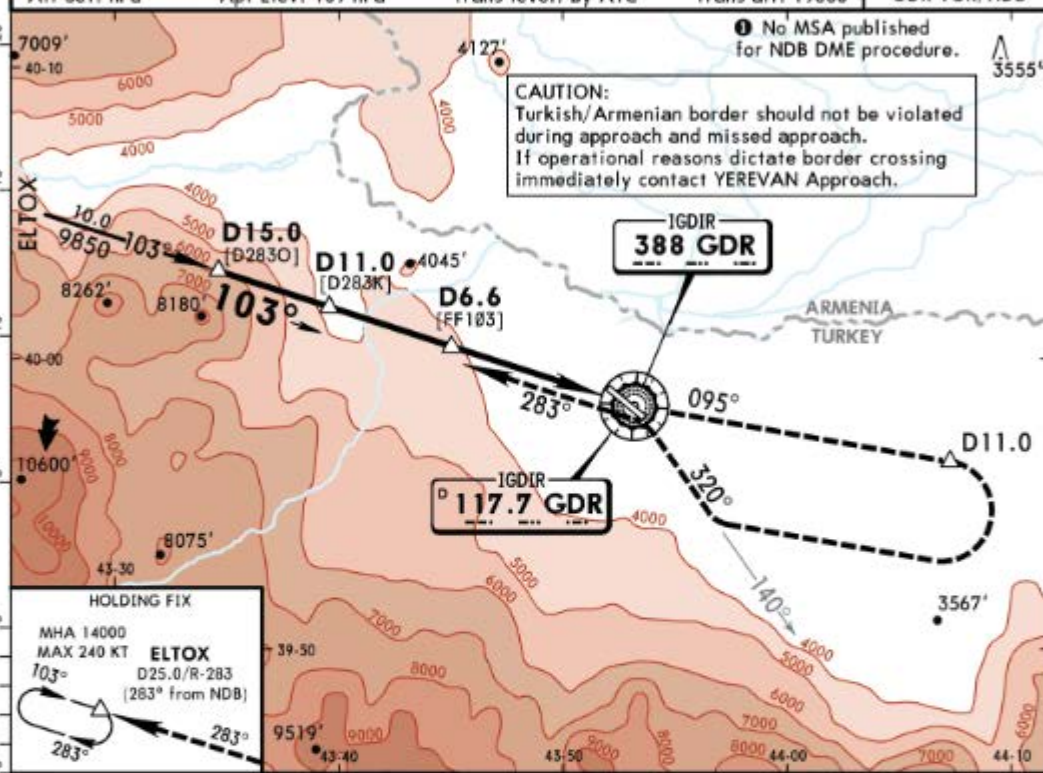
*IGDIR Approach		*YEREVAN Approach		*IGDIR Tower		*Ground	
119.6		126.0		121.3		121.8	
VOR GDR <b>117.7</b>	Final Apt Crs <b>121°</b>	Minimum Alt D6.0 <b>5100'</b> (1999')	MDA(H) Refer to Minimums	Apt Elev 3101'			
<p><b>MISSED APCH:</b> Climb on R-121. At D13.0 turn LEFT climbing to 14000' proceed on R-095 inbound VOR and hold. If unable to reach 14000' climb on R-259 after passing 11250', then turn LEFT to VOR and hold. MAX 185 KT until inbound VOR.</p>							
Alt Set: hPa		Apt Elev: 109 hPa		Trans level: By ATC		Trans alt: 19000'	



MAP at D2.0	Lighting Refer to Airport Chart	185 KT MAX	D13.0 on R-121	GDR 117.7
-------------	---------------------------------	------------	----------------	-----------

CIRCLE-TO-LAND				
CAUTION: Not authorized Northeast of airport				
	Max Kts	MDA(H)	VIS	
A	100	4100' (999')	1500m	
B	135	4100' (999')	1600m	
C	180	5020' (1919')	2400m	
D	205	5020' (1919')	3600m	

*IGDIR Approach <b>119.6</b>		*YEREVAN Approach <b>126.0</b>		*IGDIR Tower <b>121.3</b>		*Ground <b>121.8</b>	
VOR GDR <b>117.7</b>	NDB GDR <b>388</b>	Final Apch Crs <b>103°</b>	Minimum Alt <b>D6.6</b> 5580' (2479')	MDA(H) <b>5020'</b> (1919')	Apt Elev 3101'		
<b>MISSED APCH:</b> Climb on R-095 (095° from NDB). At D11.0 turn RIGHT to intercept R-140 inbound (320° to NDB) to VOR/NDB. Turn LEFT to intercept R-283 (283° from NDB) to ELTOX and hold at 14000'. MAX 185 KT until inbound VOR/NDB.							
Alt Set: hPa		Apt Elev: 109 hPa		Trans level: By ATC		Trans alt: 19000'	



MAP at VOR/NDB	Lighting - Refer to Airport Chart	MAX 185 KT	D11.0	GDR on 117.7 or 388	GDR R-095 095°
----------------	-----------------------------------	------------	-------	---------------------	----------------

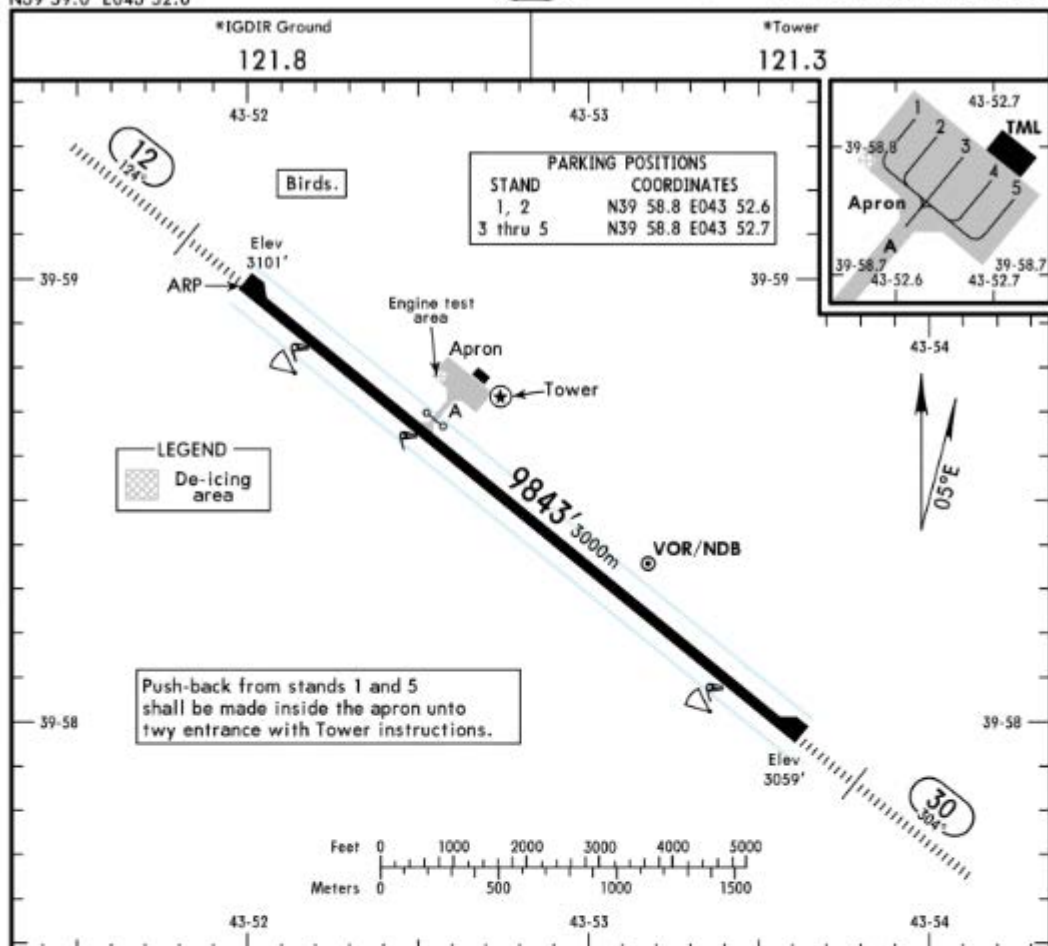
**Standard** CIRCLE-TO-LAND  
CAUTION: Not authorized Northeast of airport

	Max Kts	MDA(H)	VIS
A	100	5020' (1919')	1500m
B	135	5020' (1919')	1600m
C	180	5020' (1919')	2400m
D	205	5020' (1919')	3600m

LTCT/IGD  
 Apt Elev 3101'  
 N39 59.0 E043 52.0

JEPPESEN  
 10 AUG 18 (10-9) Eff 16 Aug

IGDIR, TURKEY  
 SEHIT BULENT AYDIN



**ADDITIONAL RUNWAY INFORMATION**

RWY	HIRL (60m) HIALS REIL ①	RVR	USABLE LENGTHS		TAKE-OFF	WIDTH
			Threshold	Glide Slope		
12	HIRL (60m) HIALS REIL ①	RVR			②	148' 45m
30	HIRL (60m) HIALS SFL REIL ①	RVR				

① PAPI-L (angle 3.0°)

② TAKE-OFF RUN AVAILABLE

**RWY 12:** From rwy head 9843' (3000m)  
 twy A Int 6562' (2000m)

**RWY 30:** From rwy head 9843' (3000m)  
 twy A Int 3281' (1000m)

**Standard**

**TAKE-OFF**

Low Visibility Take-off		Adequate vis ref (Day only)	
Day: RL & RCLM Night: RL	Day: RL or RCLM Night: RL		
A			
B			
C	rvr 300m	400m	500m
D			



YEREVAN  
Approach  
126.0

Apt Elev  
3101'

Trans level: by ATC Trans alt: 19000'



1 No MSA published

**ETISI 1A [ETIS1A]  
ULKUR 1A [ULKU1A]  
YAVUZ 1A [YAVU1A]**  
DEPARTURES  
BASED ON GDR VOR/DME

**CAUTION**

If operational reasons dictate border crossing, IMMEDIATELY contact YEREVAN Approach.



These SIDs require minimum climb gradients of

- ETISI 1A:** 5.5% until passing 12500'.
- ULKUR 1A, YAVUZ 1A:** 243' per NM (4.0%) until passing 10000'.

Gnd speed-KT	75	100	150	200	250	300
5.5% V/V (fpm)	418	557	835	1114	1392	1671
243' per NM	304	405	608	810	1013	1215

SID	RWY	ROUTING
ETISI 1A	30	Intercept GDR R-292 to ETISI, then join airway.
ULKUR 1A	12	Climb on GDR R-124 to D10.0 GDR, turn LEFT to GDR, GDR R-239 to ARI, then join airway.
YAVUZ 1A		Climb on GDR R-124 to D10.0 GDR, turn LEFT to GDR, GDR R-269 to YAVUZ, then join airway.