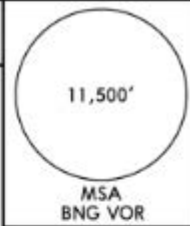
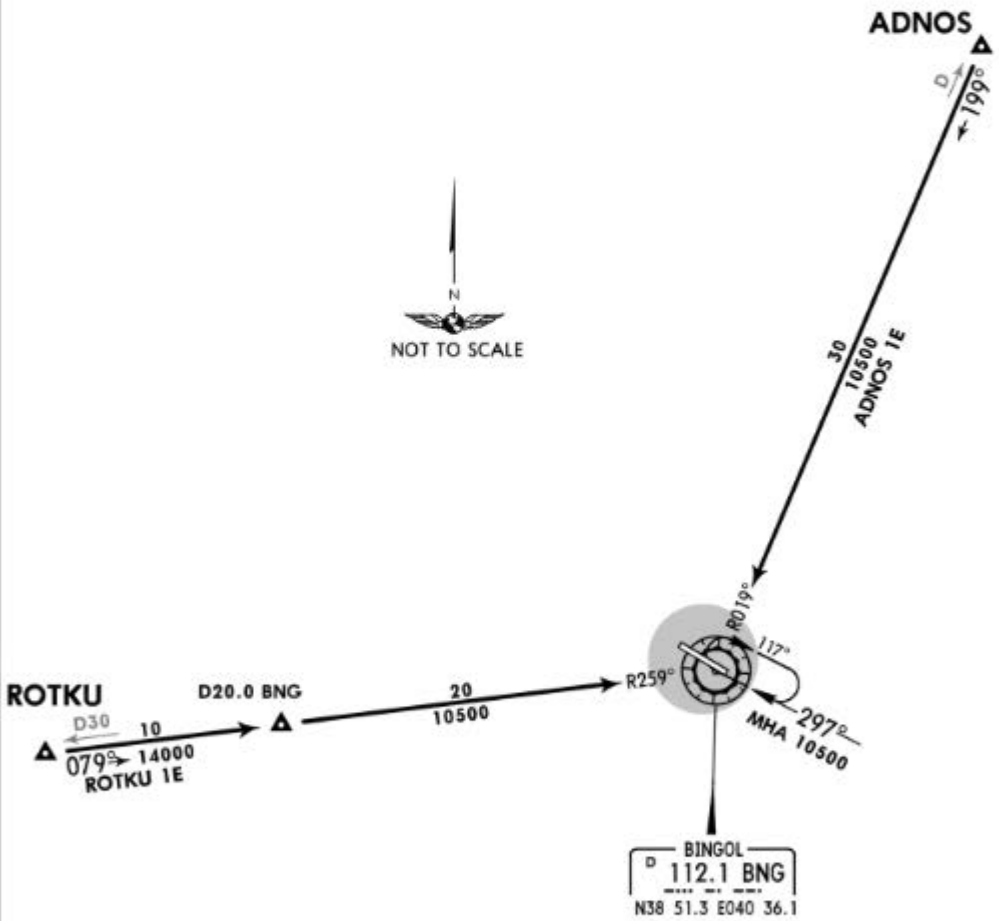


Apt Elev
3490'

Alt Set: hPa
Trans level: By ATC Trans alt: 15000'



ADNOS 1E [ADN01E]
ROTKU 1E [ROTK1E]
ARRIVALS

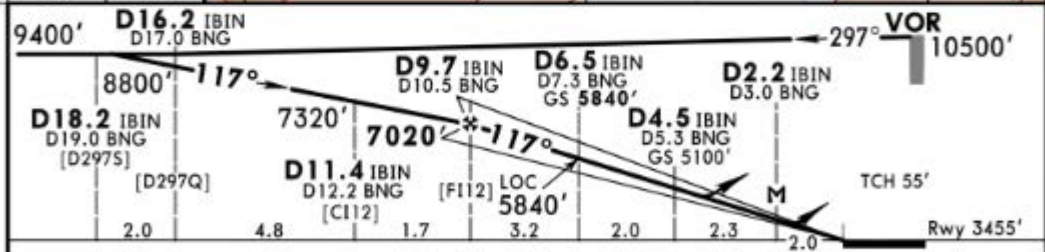
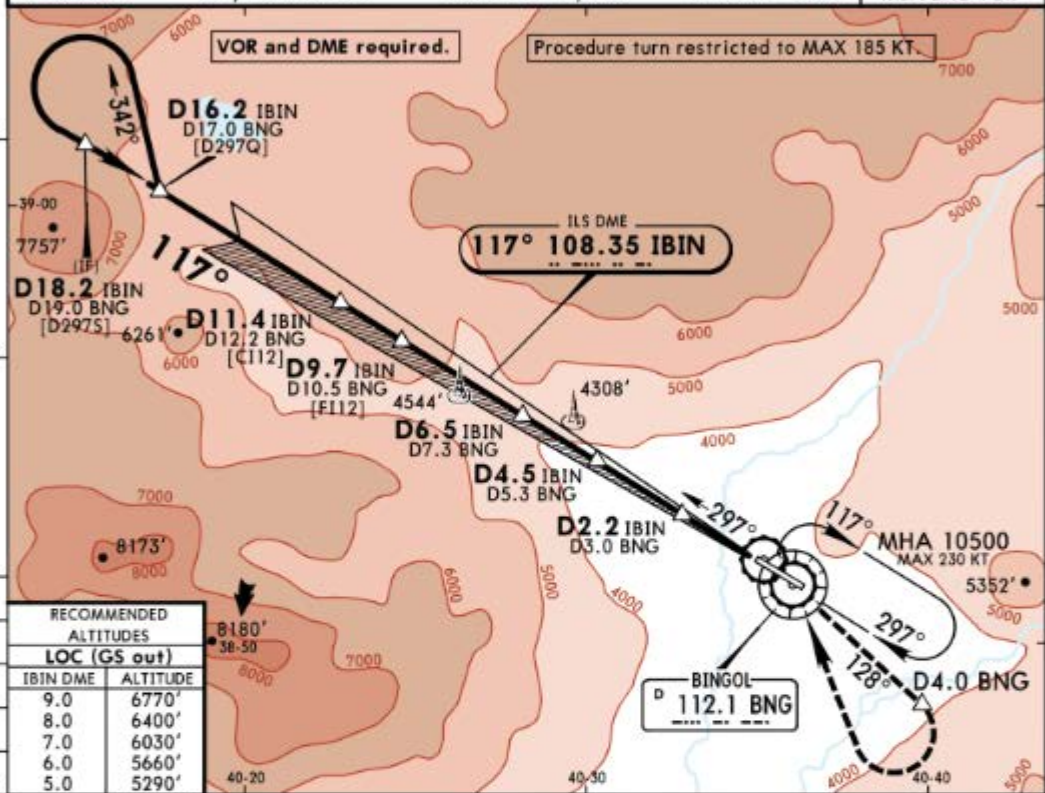


LTCU/BGG
BINGOL

JEPPESEN
1 JUN 18 (1-1)

BINGOL, TURKEY
ILS DME Rwy 12

*BINGOL Approach 119.0		*BINGOL Tower 118.075		*Ground 121.9	
LOC IBIN 108.35	Final Apch Crs 117°	GS D6.5 IBIN 5840' (2385')	ILS DA(H) (CONDITIONAL) Refer to Minimums	Apt Elev 3490'	11,500
MISSED APCH: Climb to VOR, then establish on R-128 BNG until D4.0 BNG then turn RIGHT to VOR, if 10500' reached by VOR join holding, if not, climb on R-297 BNG to 8000', then turn LEFT and join the holding. MAX 185 KT.					
Alt Set: hPa		Rwy Elev: 120 hPa	Trans level: By ATC	Trans alt: 15000'	MSA BNG VOR



Gnd speed-Kts	70	90	100	120	140	160	ILS	185 KT	BNG	D4.0	BNG
ILS GS or LOC Descent Angle	3.50°	434	557	619	743	867	991	MAX	112.1	↑	on 112.1
MAP at D2.2 IBIN/D3.0 BNG											

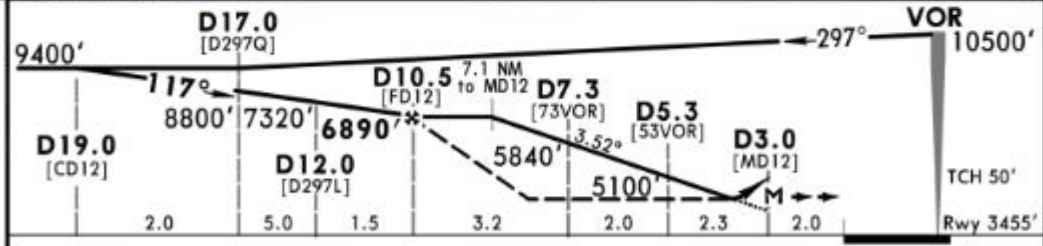
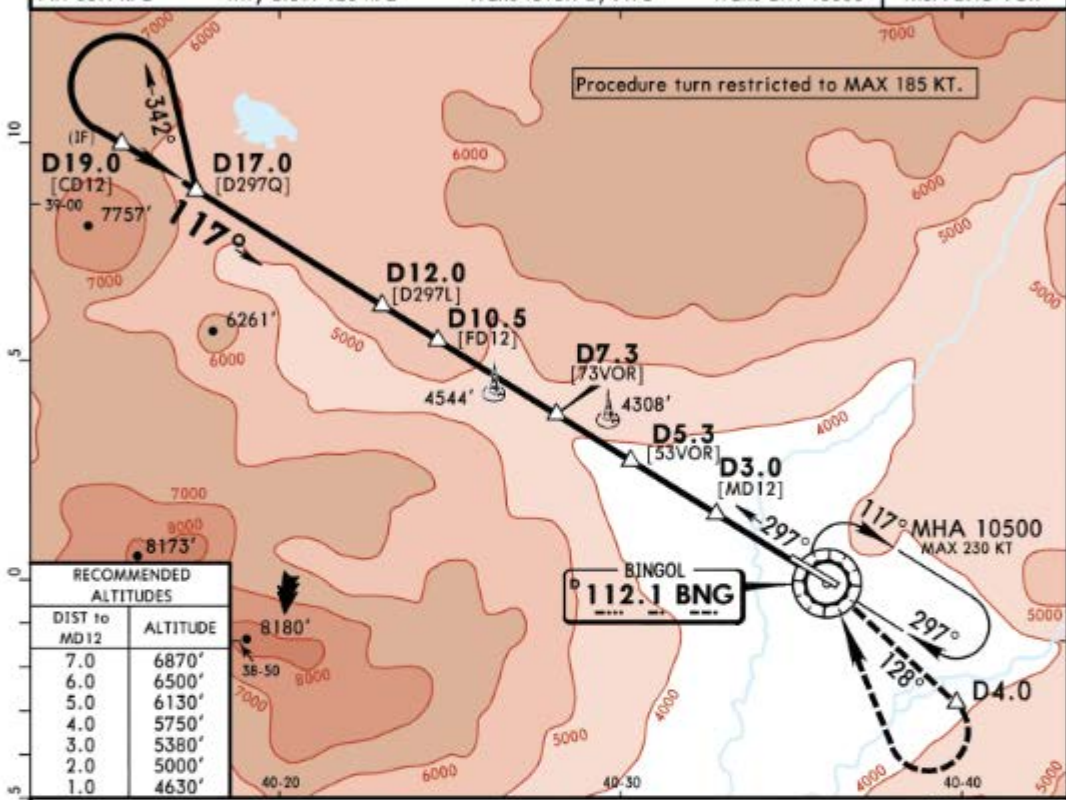
Standard						STRAIGHT-IN LANDING RWY 12			CIRCLE-TO-LAND						
ILS		LOC (GS out)		CDA			Max Kts	MDA(H)	VIS	RVR	RVR				
Missed apch climb grad mim 5.0%		Missed apch climb grad mim 2.5%		DA/MDA(H)											
DA(H) 3755' (300')		DA(H) 4555' (1100')		5100' (1645')			100	5200' (1710')	1500m	1500m	1500m				
FULL	ALS out	FULL	ALS out	ALS out											
A												135	5200' (1710')	1600m	1600m
B	RVR 900m	RVR 1400m										180	6100' (2610')	2400m	2400m
C			RVR 2400m				205	6100' (2610')	3600m	3600m					
D															

LTCU/BGG
BINGOL

JEPPESEN
1 JUN 18 (13-1)

BINGOL, TURKEY
VOR DME Rwy 12

*BINGOL Approach		*BINGOL Tower			*Ground
119.0		118.075			121.9
VOR BNG 112.1	Final Aptch Crs 117°	Minimum Alt D10.5 6890' (3435')	DA/MDA(H) (CONDITIONAL) Refer to Minimums	Apt Elev 3490' Rwy 3455'	11,500
MISSED APCH: Climb on R-128 until D4.0 then turn RIGHT to VOR, if 10,500' reached by VOR join holding, if not proceed climbing on R-297 to 9000', then turn LEFT and join the holding. MAX 185 KT.					
Alt Set: hPa		Rwy Elev: 120 hPa	Trans level: By ATC		Trans alt: 15000' MSA BNG VOR



Gnd speed-Kts	70	90	100	120	140	160	HIALS REIL PAPI	185 KT MAX	D4.0 ↑ BNG on 112.1 R-128
Descent Angle	3.52°	436	561	623	748	997			
MAP at D3.0									

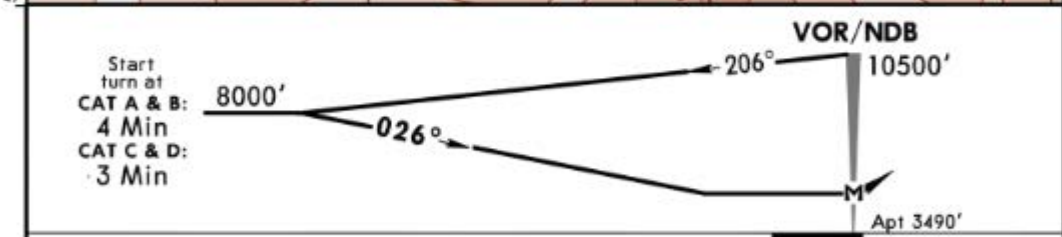
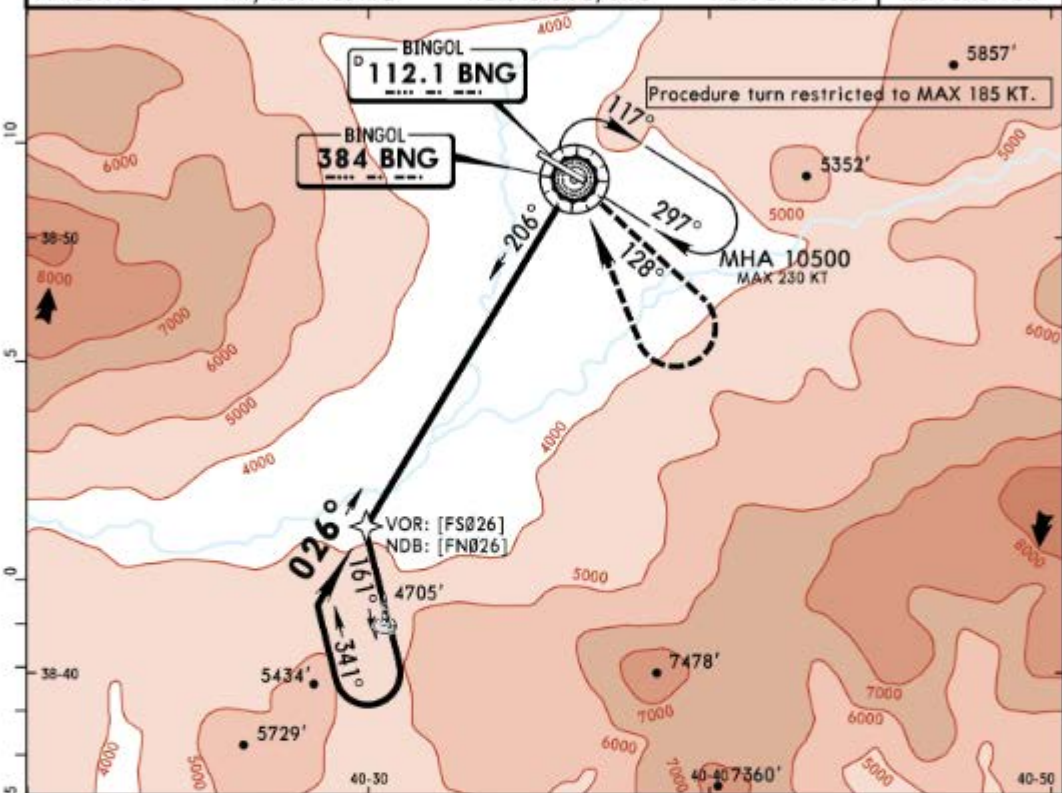
PANS OPS	STRAIGHT-IN LANDING RWY 12				CIRCLE-TO-LAND	
	Missed apch climb gradient mim 5.0%		Missed apch climb gradient mim 2.5%		Max Kts	MDA(H) VIS
	CDFA DA/MDA(H) 4430' (975')	non-CDFA MDA(H) 4430' (975')	CDFA DA/MDA(H) 5100' (1645')	non-CDFA MDA(H) 5100' (1645')		
A	RVR 1500m	RVR 4300m	RVR 4700m	RVR 5000m	RVR 5000m	100 5200' (1710') 1500m
B						135 5200' (1710') 1600m
C	RVR 2400m	RVR 4500m	RVR 4900m			180 6100' (2610') 2400m
D						205 6100' (2610') 3600m

LTCU/BGG
BINGOL

JEPPESEN
1 JUN 18 13-2

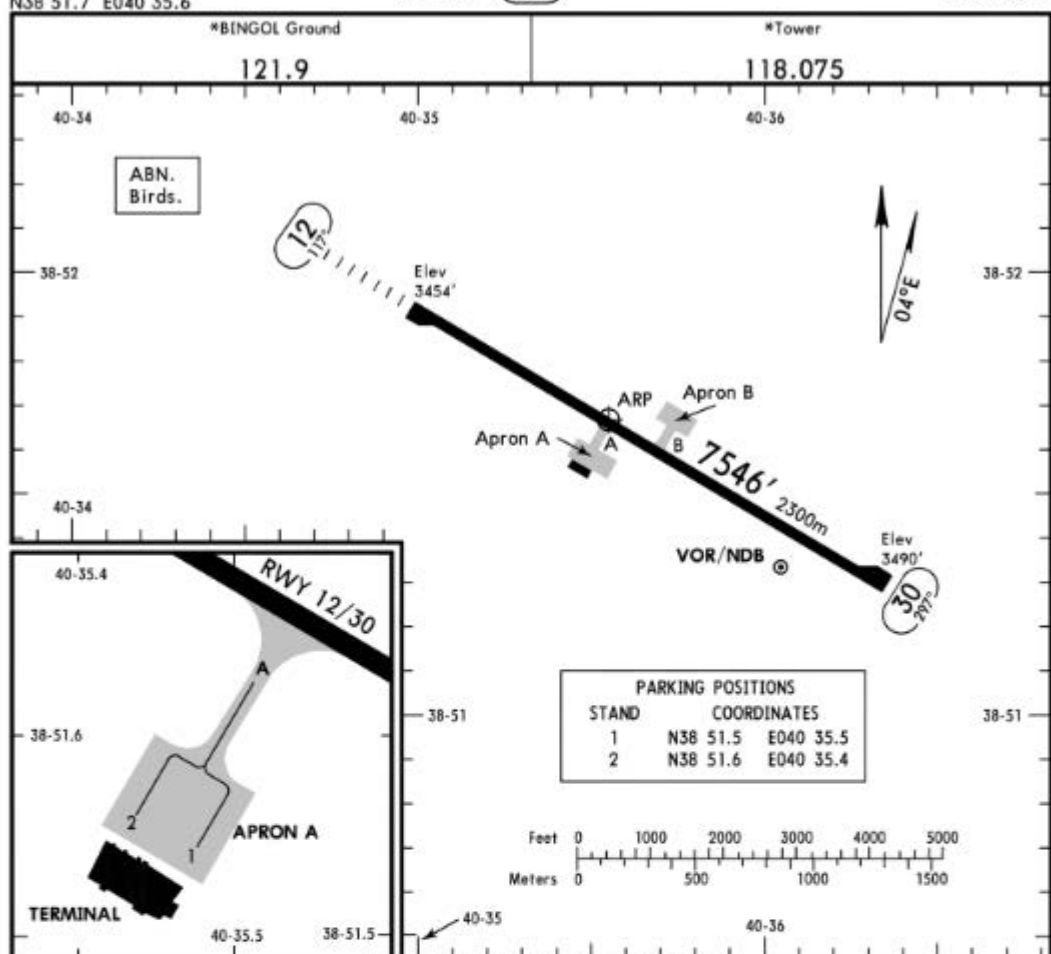
BINGOL, TURKEY
VOR/NDB

*BINGOL Approach			*BINGOL Tower			*Ground
119.0			118.075			121.9
VOR BNG 112.1	NDB BNG 384	Final Apch Crs 026°	Minimum Alt No FAF	MDA(H) 6900'(3410')	Apt Elev 3490'	11,500
MISSED APCH: Climb on R-128 (128° from NDB) to 8500', then turn RIGHT climbing to VOR/NDB and hold. MAX 185 KT.						
Alt Set: hPa	Rwy Elev: 120 hPa	Trans level: By ATC	Trans alt: 15000'		MSA BNG VOR	



Lighting - Refer to Airport Chart	185 KT MAX	8500'	BNG on 112.1 or R-128	128° from BNG 384
MAP at VOR/NDB				

CIRCLE-TO-LAND				
	Max Kts.	MDA(H)	VTS	
A	100	6900'(3410')	1500m	
B	135	6900'(3410')	1600m	
C	180	6900'(3410')	2400m	
D	205	6900'(3410')	3600m	



ADDITIONAL RUNWAY INFORMATION

RWY	USABLE LENGTHS				TAKE-OFF	WIDTH
	HIRL (60m)	REIL	PAPI-L (angle 3.5°)	RVR		
12	HIRL (60m)	HIALS	REIL	PAPI-L (angle 3.5°)	RVR	148'
30	HIRL (60m)	REIL	PAPI-L (angle 3.0°)	RVR		45m

Standard

TAKE-OFF

	Low Visibility Take-off	Day: RL or RCLM Night: RL	Adequate vis ref (Day only)
A	Day: RL & RCLM Night: RL	Day: RL or RCLM Night: RL	Adequate vis ref (Day only)
B	RVR 300m	400m	500m
C			
D			

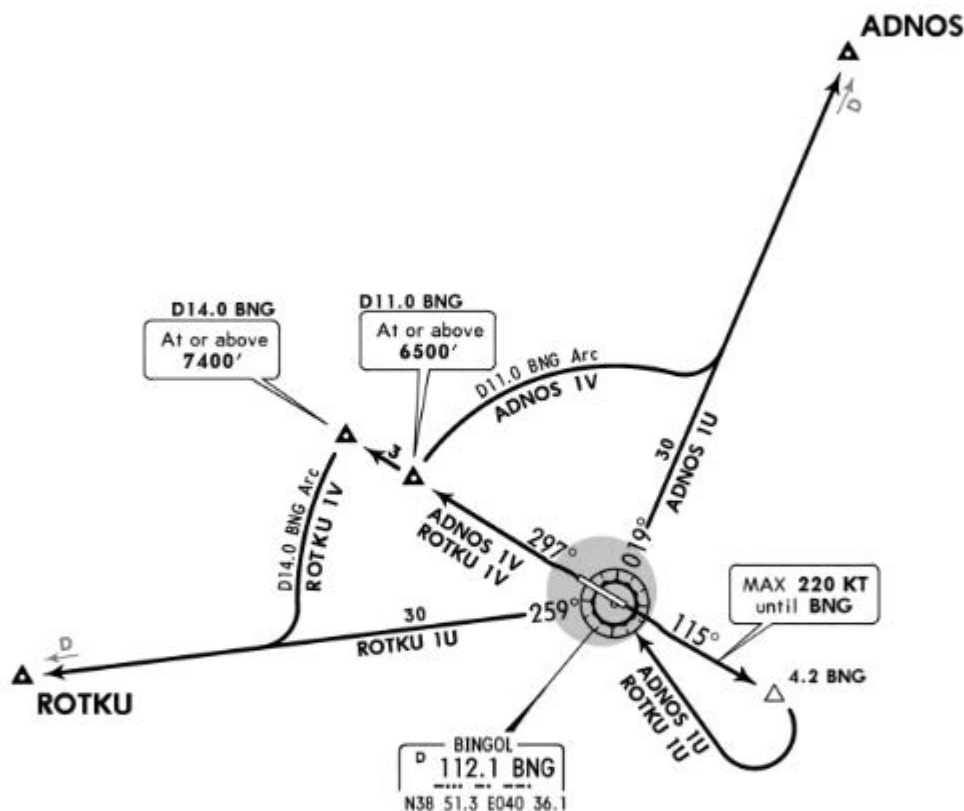
Apt Elev
3490'

Trans level: By ATC Trans alt: 15000'

11,500'

MSA
BNG VOR

ADNOS 1U [ADN01U]
ADNOS 1V [ADN01V]
ROTKU 1U [ROTKU1U]
ROTKU 1V [ROTKU1V]
RWYS 12, 30 DEPARTURES



These SIDs require minimum climb gradients of

ADNOS 1U, ROTKU 1U: 383' per NM (6.3%) up to 9500'.
ADNOS 1V, ROTKU 1V: 352' per NM (5.8%) up to 9500'.

Gnd speed-KT	75	100	150	200	250	300
352' per NM	440	587	880	1173	1467	1760
383' per NM	479	638	958	1277	1596	1915

SID	RWY	ROUTING
ADNOS 1U	12	Intercept BNG R-115 to D4.2 BNG, turn RIGHT to BNG, BNG R-019 to ADNOS, then join airway.
ADNOS 1V	30	Intercept BNG R-297 to D11.0 BNG, turn RIGHT, along D11.0 BNG Arc, intercept BNG R-019 to ADNOS, then join airway.
ROTKU 1U	12	Intercept BNG R-115 to D4.2 BNG, turn RIGHT to BNG, BNG R-259 to ROTKU, then join airway.
ROTKU 1V	30	Intercept BNG R-297 to D14.0 BNG, turn LEFT, along D14.0 BNG Arc, intercept BNG R-259 to ROTKU, then join airway.