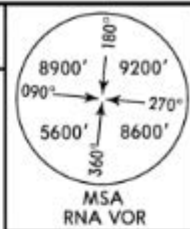


Apt Elev 2038' Alt Set: hPa  
Trans level: By ATC Trans alt: 12000'



**ABDIK 1A [ABDI1A]**  
**ARRIVAL**  
BASED ON VORDME/NDB

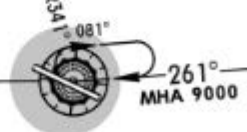
**ABDIK**  
N37 41.3 E041 57.3



D5 RNA



SIRNAK  
D (H) 112.3 RNA  
N37 21.9 E042 03.7  
411 RNA  
N37 21.9 E042 03.7



LTCV/NKT

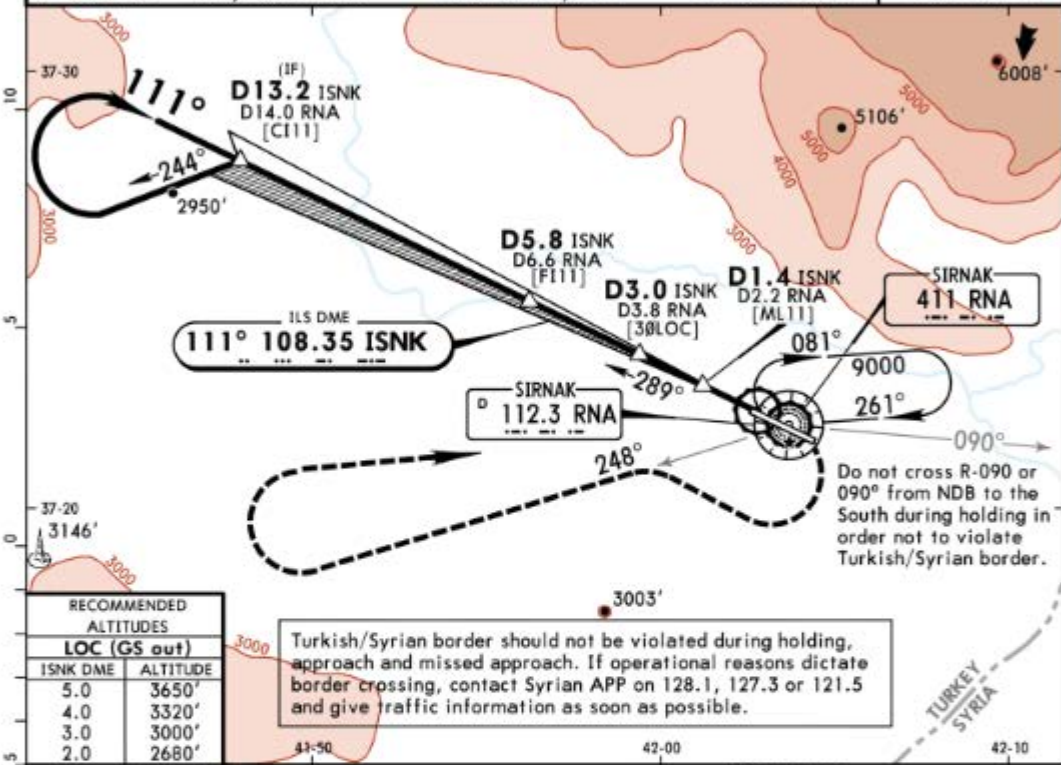
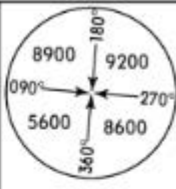
15 MAR 19  
SERAFETTIN ELCI Eff 28 Mar

JEPPESEN

SIRNAK, TURKEY

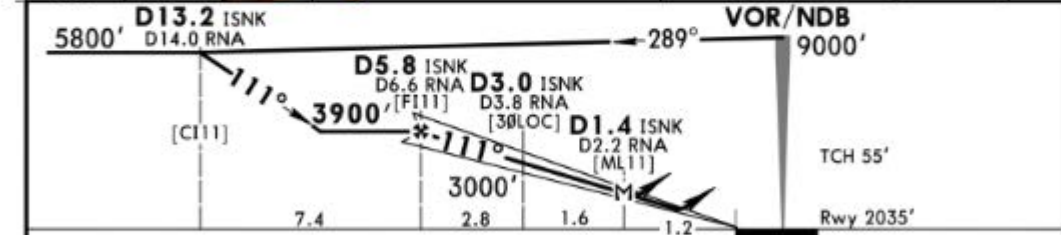
(11-1) ILSVOR DME or ILS NDB DME Rwy 11

*SIRNAK Approach		*SIRNAK Tower		*Ground	
119.2		119.55		121.6	
LOC ISNK <b>108.35</b>	Final Apch Crs <b>111°</b>	GS D5.8 ISNK <b>3900'</b> (1865')	ILS DA(H) (CONDITIONAL) <b>2235'</b> (200')	Apt Elev 2038' Rwy 2035'	
<p><b>MISSED APCH:</b> Climb on R-116 (116° from NDB) to 2950', then turn RIGHT to intercept R-248 (248° from NDB) and climb to 6000', then turn RIGHT climbing to VOR/NDB at 9000' and hold.                  MAX 185 KT until intercept R-248/248° from NDB.</p>					
Alt Set: hPa		Rwy Elev: 72 hPa		Trans level: By ATC	
				Trans alt: 12000'	



RECOMMENDED ALTITUDES	
LOC (GS out)	
ISNK DME	ALTITUDE
5.0	3650'
4.0	3320'
3.0	3000'
2.0	2680'

Turkish/Syrian border should not be violated during holding, approach and missed approach. If operational reasons dictate border crossing, contact Syrian APP on 128.1, 127.3 or 121.5 and give traffic information as soon as possible.



Gnd speed-Kts	70	90	100	120	140	160	HEALS	185 KT	2950'	RNA	116°
ILS GS or LOC Descent Angle	3.00°	372	478	531	637	743	REIL PAPI PAPI	MAX	↑	on 112.3 or R-116	from RNA 411
MAP at D1.4 ISNK/D2.2 RNA											

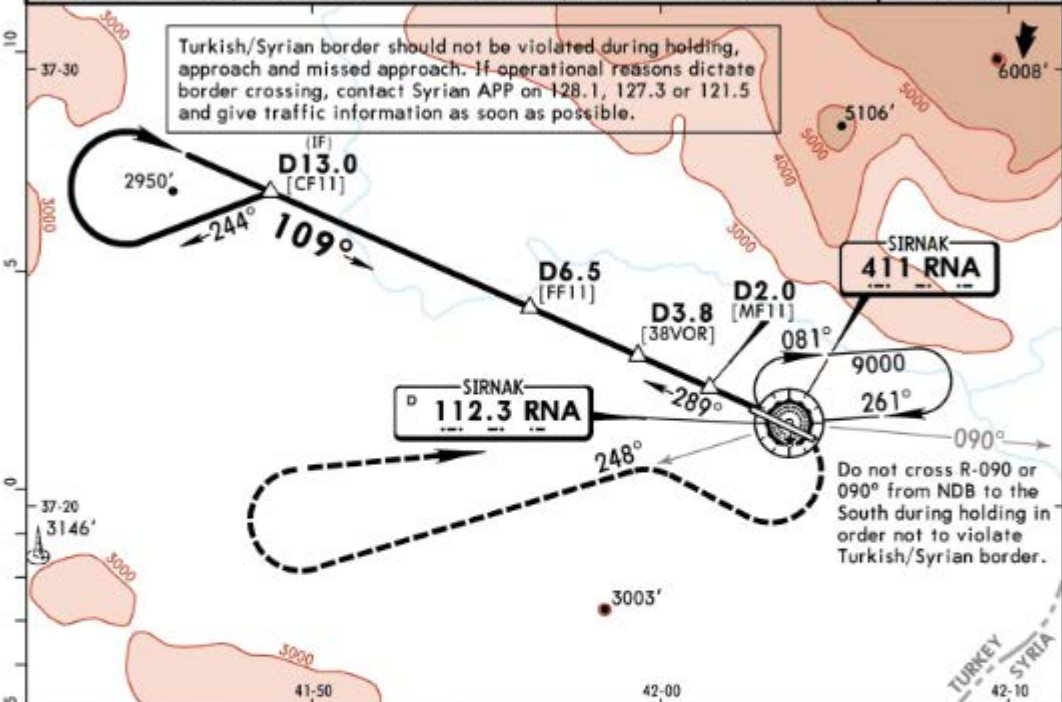
Standard						STRAIGHT-IN LANDING RWY 11			CIRCLE-TO-LAND				
Missed apch climb gradient mim 4.8%		Missed apch climb gradient mim 2.5%		LOC (GS out)		CAUTION: Not authorized North of airport							
DA(H) <b>2235'</b> (200')		DA(H) <b>2460'</b> (425')		CDFA									
FULL		ALS out		DA/MDA(H) <b>2500'</b> (465')									
				FULL		ALS out							
A				RVR 1500m		RVR 1500m		Max Kts	MDA(H)	VIS			
B				RVR 1500m		RVR 1500m		100	2800' (762')	1500m			
C	RVR 750m	RVR 1200m						135	2800' (762')	1600m			
D				RVR 1600m	RVR 2000m	RVR 1800m	RVR 2200m	180	3500' (1462')	2400m			
								205	3500' (1462')	3600m			

LTCV/NKT  
SERAFETTIN ELCI

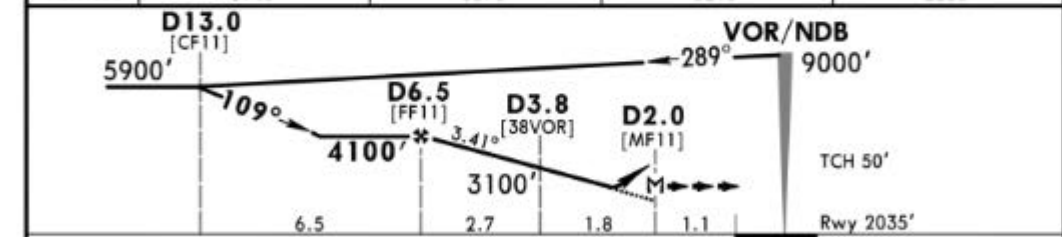
JEPPESEN  
25 MAY 18 (13-1)

SIRNAK, TURKEY  
VOR DME or NDB DME Rwy 11

*SIRNAK Approach			*SIRNAK Tower			*Ground	
119.2			119.55			121.6	
VOR RNA <b>112.3</b>	NDB RNA <b>411</b>	Final Apx Crs <b>109°</b>	Minimum Alt <b>D6.5</b> 4100' (2065')	DA/MDA(H) <b>2600'</b> (565')	Apt Elev 2038' Rwy 2035'		
<b>MISSED APCH:</b> Climb on R-116 (116° from NDB) to 2950', then turn RIGHT to intercept R-248 (248° from NDB) and climb to 6000', then turn RIGHT climbing to VOR/NDB at 9000' and hold. <b>MAX 185 KT</b> until intercept R-248/248° from NDB.							
Alt Set: hPa		Rwy Elev: 72 hPa		Trans level: By ATC		Trans alt: 12000'	
MSA RNA VOR/NDB							



DIST to MF11	4.0	3.0	2.0	1.0
ALTITUDE	3940'	3570'	3210'	2850'



Grnd speed-Kts	70	90	100	120	140	160	HEALS REIL PAPI PAPI	185 KT MAX	2950'	RNA on 112.3 or R-116	116° from RNA 411
Descent Angle 3.41°	422	543	603	724	845	965					
MAP at D2.0											

PANS OPS	<b>Standard</b>		STRAIGHT-IN LANDING RWY 11			CIRCLE-TO-LAND CAUTION: Not authorized North of airport		
	CDFA DA/MDA(H) <b>2600'</b> (565')					ALS out		
	A	RVR 1500m				Max Kts	MDA(H)	VIS
	B					100	2800' (762')	1500m
	C					135	2800' (762')	1600m
D	RVR 2200m		RVR 2400m			180	3500' (1462')	2400m
						205	3500' (1462')	3600m

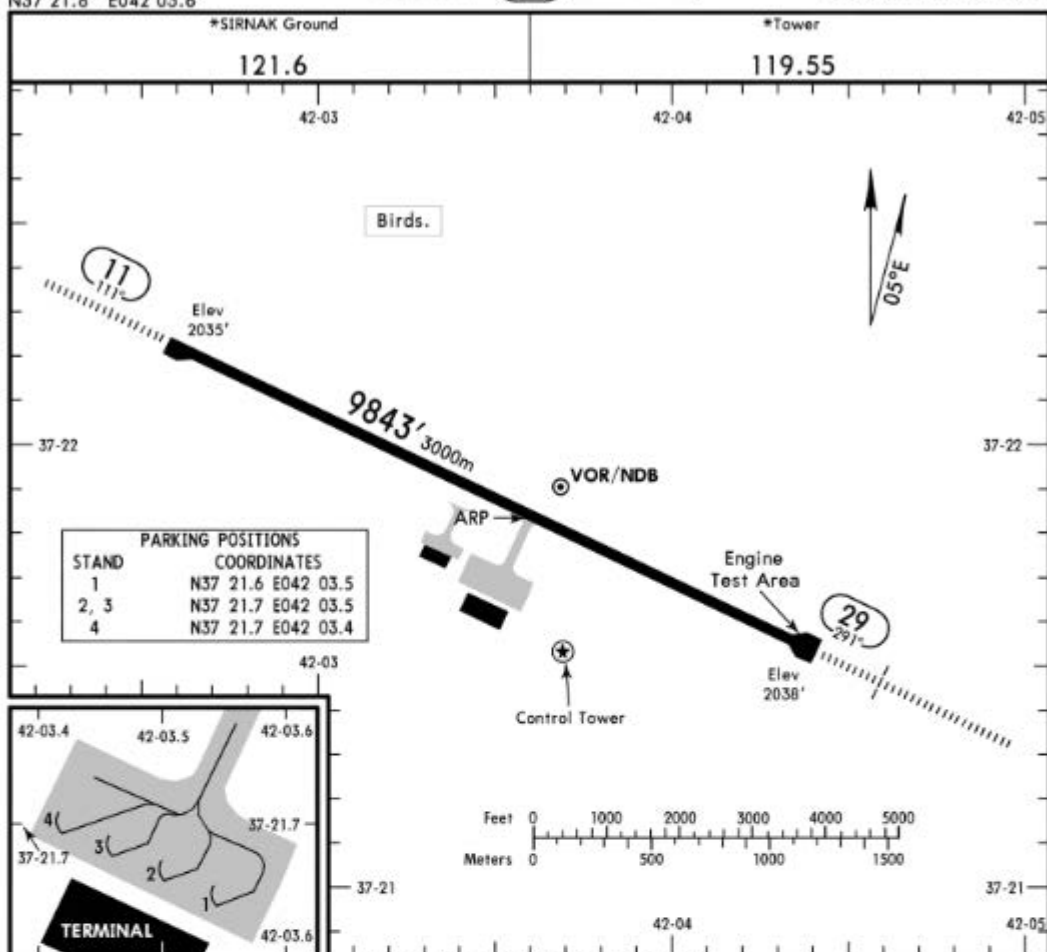
CHANGES: Minimums.

© JEPPESEN, 2013, 2018. ALL RIGHTS RESERVED.

LTCV/NKT  
 Apt Elev 2038'  
 N37 21.8 E042 03.6

JEPPESSEN  
 15 MAR 19 (10-9) Eff 28 Mar

SIRNAK, TURKEY  
 SERAFETTIN ELCI



ADDITIONAL RUNWAY INFORMATION

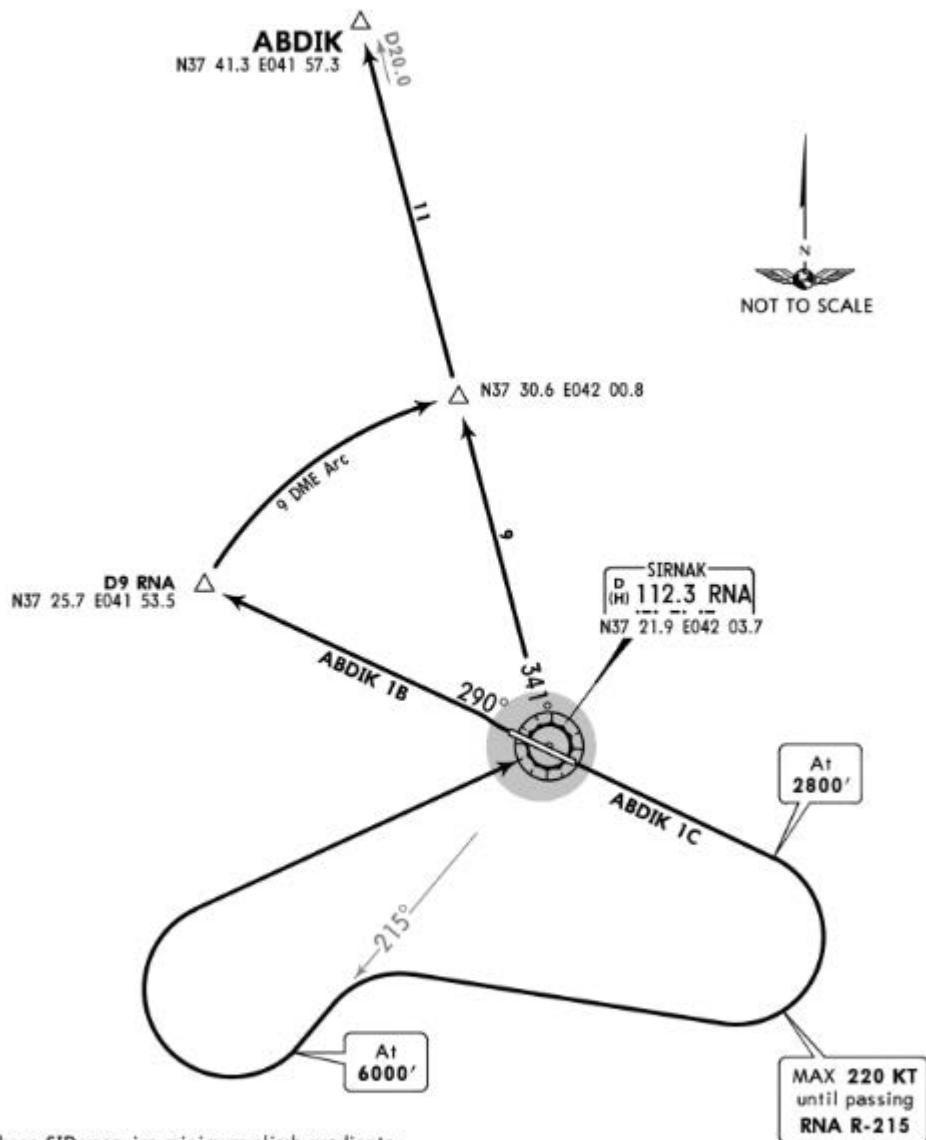
RWY	USABLE LENGTHS				WIDTH
	LANDING	BEYOND	TAKE-OFF		
	Threshold	Glide Slope			
11 29	HIRL (60m) HIALS REIL PAPI (3.0°)	RVR	8872' 2704m		148' 45m

Standard		TAKE-OFF	
Low Visibility Take-off			
Day: RL & RCLM Night: RL		Day: RL or RCLM Night: RL	Adequate vis ref (Day only)
A	RVR 300m	400m	500m
B			
C			
D			

Apt Elev 2038' Trans level: By ATC Trans alt: 12000'



ABDIK 1B [ABDI1B]  
ABDIK 1C [ABDI1C]  
RWYS 29, 11 DEPARTURES  
BASED ON VORDME



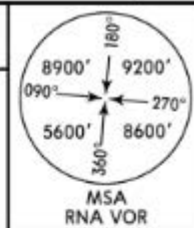
These SIDs require minimum climb gradients of

- ABDIK 1B: 328' per NM (5.4%).
- ABDIK 1C: 365' per NM (6%) until crossing 6000'.

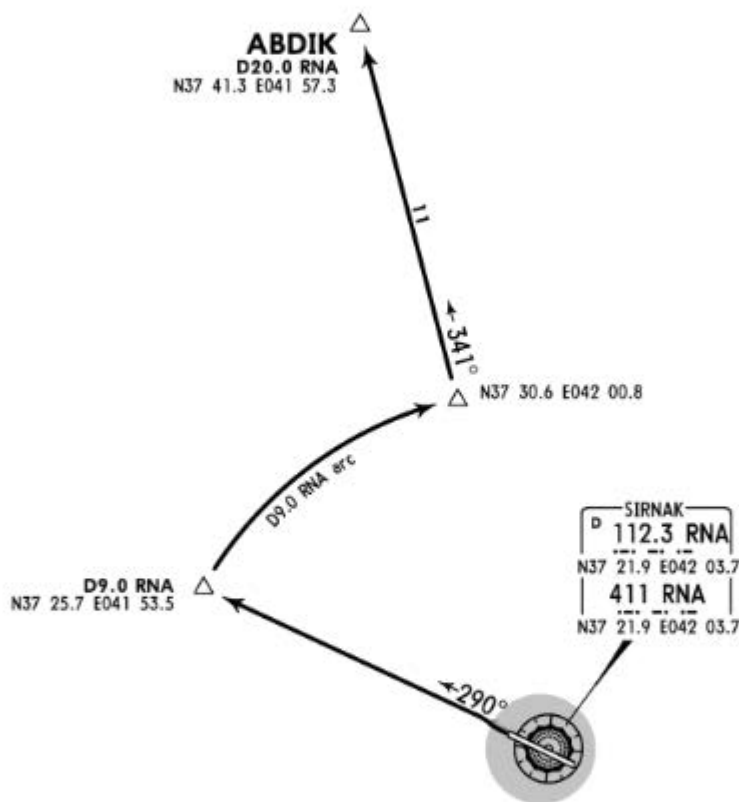
Gnd speed-KT	75	100	150	200	250	300
365' per NM	456	608	911	1215	1519	1823
328' per NM	410	547	820	1094	1367	1641

SID	RWY	ROUTING
ABDIK 1B	29	Climb on RNA R-290 to D9 RNA, turn RIGHT, along RNA 9 DME arc, intercept RNA R-341 to ABDIK, join airway.
ABDIK 1C	11	Climb straight ahead to 2800', turn RIGHT, intercept RNA R-215, at 6000' turn RIGHT to RNA, RNA R-341 to ABDIK, join airway.

Apt Elev 2038' Trans level: By ATC Trans alt: 12000'



**ABDIK 1D [ABDI1D]  
RWY 29 DEPARTURE  
BASED ON NDB/DME**



These SID requires minimum climb gradient of 389' per NM (6.4%).

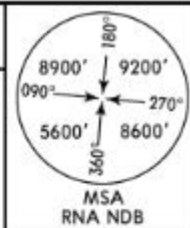
Gnd speed-KT	75	100	150	200	250	300
389' per NM	486	648	973	1297	1621	1945

**ROUTING**

Climb on 290° bearing from RNA NDB to D9.0 RNA, turn RIGHT, along D9.0 RNA arc, intercept 341° bearing from RNA NDB to ABDIK, join airway.

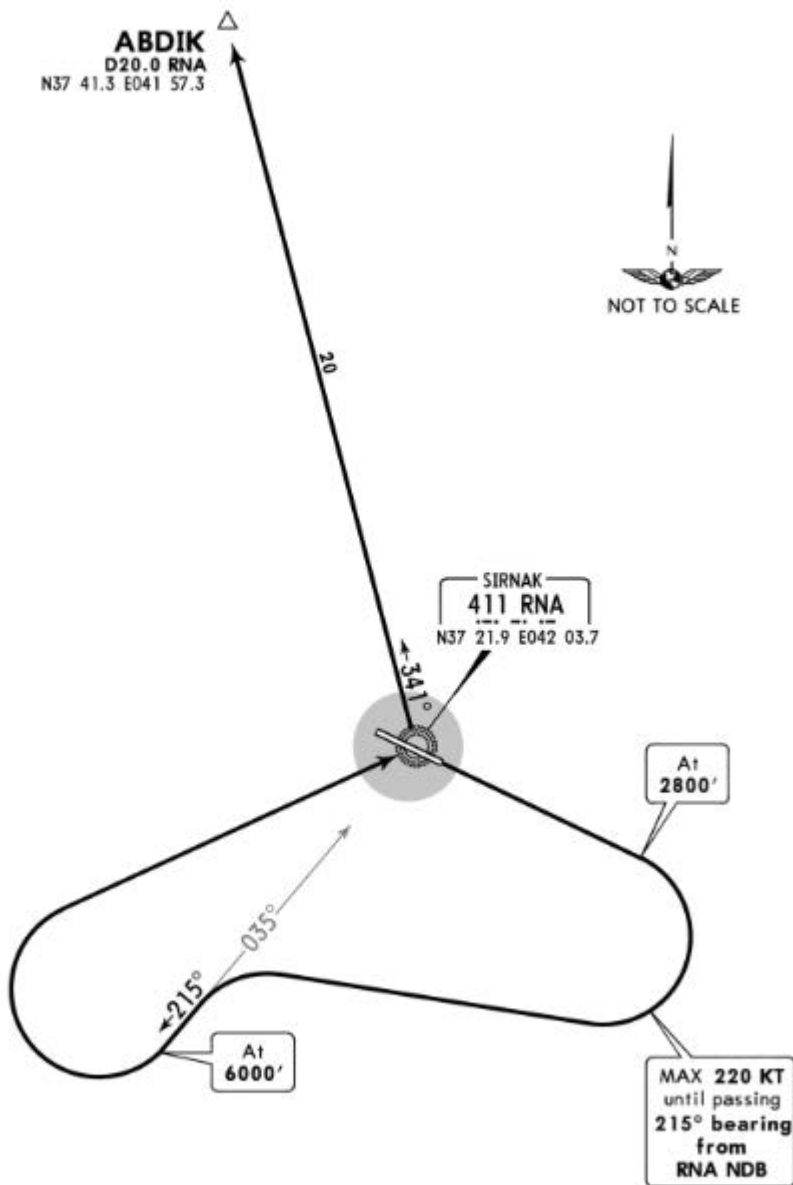
Apt Elev  
2038'

Trans level: By ATC Trans alt: 12000'



ABDIK 1E [ABDI1E]  
RWY 11 DEPARTURE  
BASED ON NDB

ABDIK  
D20.0 RNA  
N37 41.3 E041 57.3



These SID requires minimum climb gradient of 365' per NM (6%) until crossing 6000'.

Gnd speed-KT	75	100	150	200	250	300
365' per NM	456	608	913	1217	1521	1825

ROUTING

Climb straight ahead to 2800', turn RIGHT, intercept 215° bearing from RNA NDB, at 6000' turn RIGHT to RNA NDB, 341° bearing to ABDIK, join airway.