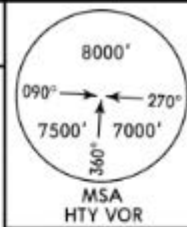


ATIS
121.25

Apt Elev
267'

Alt Set: hPa
Trans level: By ATC Trans alt: 10000'



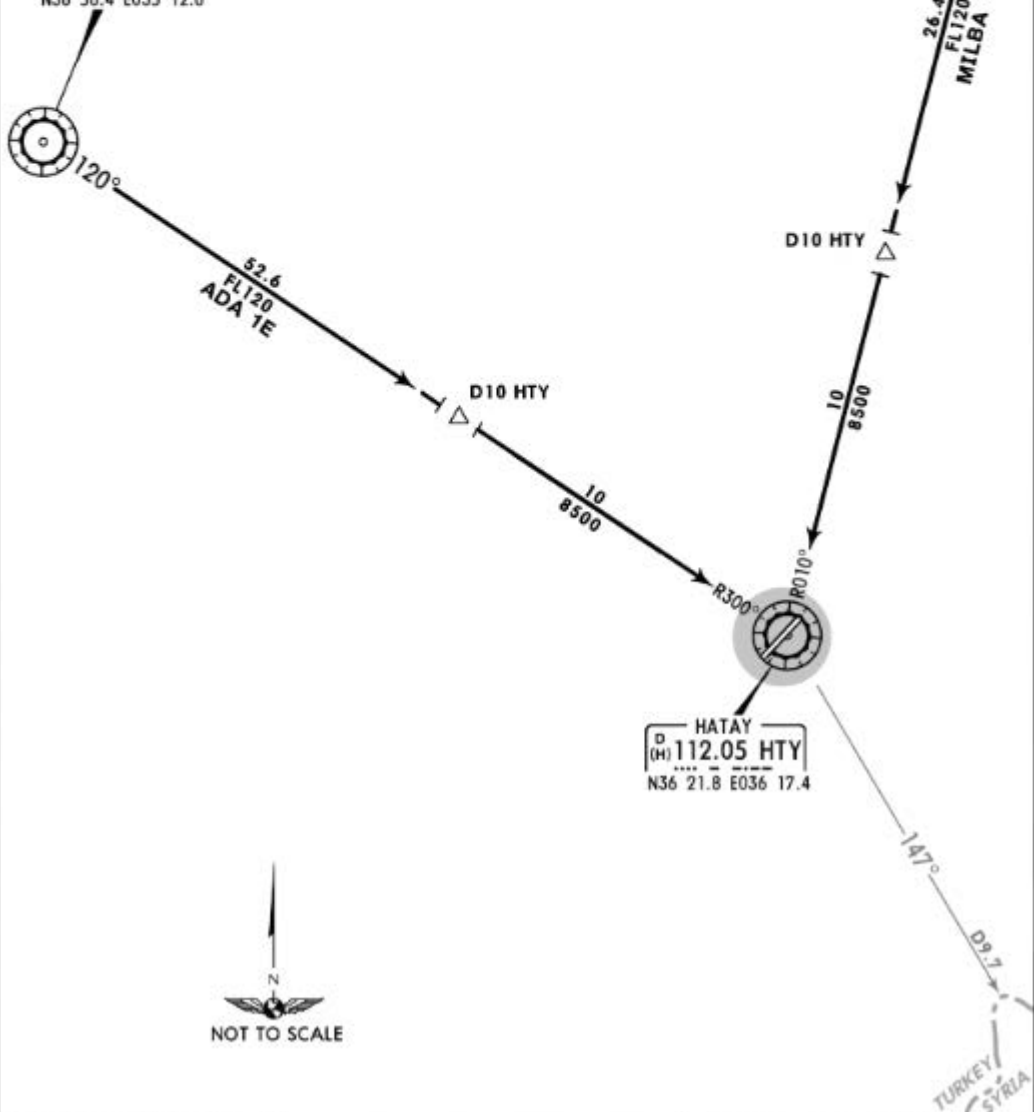
ADA 1E
MILBA 1E [MILB1E]
ARRIVALS

CAUTION
Turkish/Syrian border shall not be violated. Closest distance to the border ref to HTY is depicted on chart.

MILBA
N36 57.1 E036 28.8

ADANA
D 112.7 ADA
N36 56.4 E035 12.6

HATAY
D (H) 112.05 HTY
N36 21.8 E036 17.4



LTDA/HTY

JEPPESEN

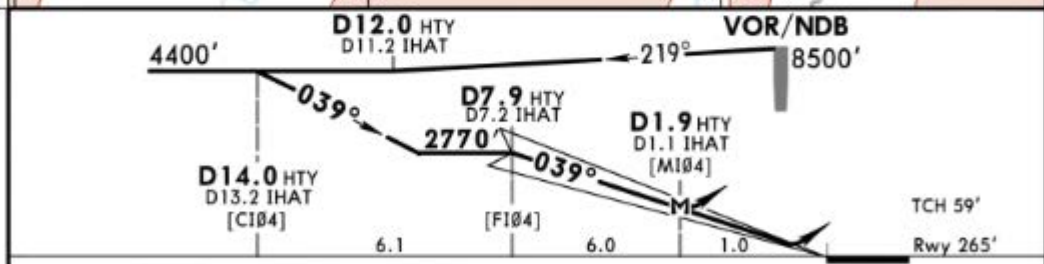
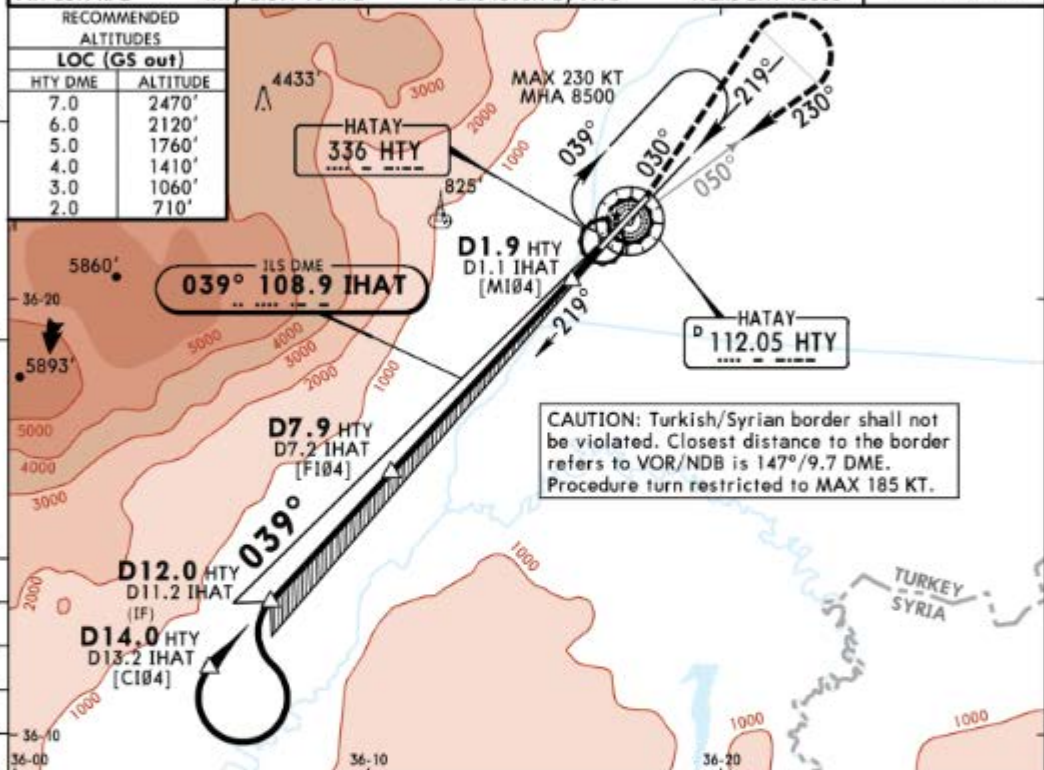
9 NOV 18 (11-1)

HATAY, TURKEY
 VOR ILS DME Rwy 04
 or NDB ILS DME Rwy 04

HATAY

| | | | | | | | |
|---|---------------------------|---------------------------------|--------------------------------------|---------------------------|--|-------------------|--|
| *ATIS 121.25 | | *HATAY Approach 118.725 | | *HATAY Tower 128.525 | | *Ground 121.7 | |
| LOC IHAT 108.9 | Final Apch Crs 039° | GS D7.9 HTY 2770' (2505') | ILS DA(H) Refer to Minimums | Apt Elev 267' Rwy 265' | | | |
| <p>MISSED APCH: Climb on 030° to 2350', then turn RIGHT and intercept R-050 inbound (230° bearing) to HTY VOR/NDB at 8500' and hold. MAX 185 KT until inbound to VOR/NDB. If unable to reach 8500' at VOR/NDB, intercept 217° from VOR/NDB climbing to 5500', then turn LEFT and intercept R-185 inbound (005° bearing) to VOR/NDB at 8500' and hold.</p> | | | | | | | |
| Alt Set: hPa | | Rwy Elev: 10 hPa | | Trans level: By ATC | | Trans alt: 10000' | |

| RECOMMENDED ALTITUDES | |
|-----------------------|----------|
| LOC (GS out) | |
| HTY DME | ALTITUDE |
| 7.0 | 2470' |
| 6.0 | 2120' |
| 5.0 | 1760' |
| 4.0 | 1410' |
| 3.0 | 1060' |
| 2.0 | 710' |



| | | | | | | | | | | |
|-----------------------------|-------|-----|-----|-----|-----|-----|-------|--------|------------|---------|
| Gnd speed-Kts | 70 | 90 | 100 | 120 | 140 | 160 | HEALS | 185 KT | HTY | 2350' |
| ILS GS or LOC Desc Angle | 3.30° | 409 | 526 | 584 | 701 | 817 | 934 | MAX | 112.05/336 | on 030° |
| MAP at D1.9 HTY/D1.1 IHAT | | | | | | | | | | |

| PANS OPS | STRAIGHT-IN LANDING RWY 04 | | | | LOC (GS out) CDFA | | CIRCLE-TO-LAND | | |
|----------|---------------------------------|-----------|---------------------------------|-----------|------------------------|-----------|----------------|---------------|-------|
| | MISSED APCH CLIMB grad min 4.0% | | MISSED APCH CLIMB grad min 2.5% | | DA(MDA)(H) 650' (385') | | Max Kts | MDA(H) | VIS |
| A | FULL | ALS out | FULL | ALS out | ALS out | ALS out | 100 | 770' (503') | 1500m |
| B | RVR 550m | RVR 1200m | RVR 1100m | RVR 1500m | RVR 1100m | RVR 1500m | 135 | 770' (503') | 1600m |
| C | | | | RVR 1800m | | RVR 1800m | 180 | 2200' (1933') | 2400m |
| D | | | | | | | 205 | 2860' (2593') | 3600m |

W/o HUD/AP/FD: RVR 750m.

CHANGES: Reverse side VOR ILS DME Rwy 22 canceled.

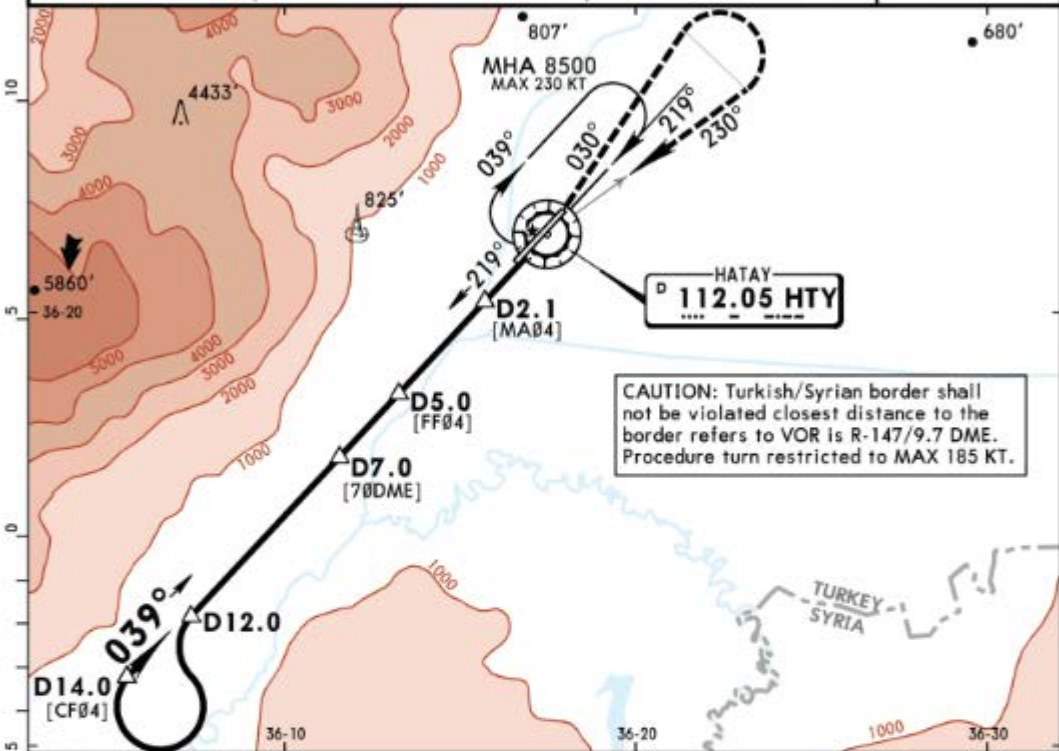
© JEPPESEN, 2016, 2018. ALL RIGHTS RESERVED.

LTDA/HTY
HATAY

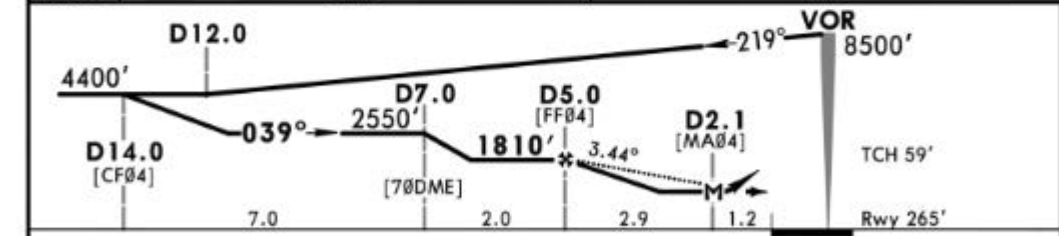
JEPPESSEN
30 MAR 18 (13-1)

HATAY, TURKEY
VOR DME Rwy 04

| | | | | | | | |
|--|-----------------------------------|---|---------------------------------|---------------------------|--|------------------------|--|
| *ATIS 121.25 | | *HATAY Approach 118.725 | | *HATAY Tower 128.525 | | *Ground 121.7 | |
| VOR HTY 112.05 | Final Aptch Crs 039° | Minimum Alt D5.0 1810' (1545') | DA/MDA(H) 650' (385') | Apt Elev 267' Rwy 265' | | <p>MSA HTY VOR</p> | |
| <p>MISSED APCH: Climb on R-030 to cross 2350', then turn RIGHT proceed to VOR on R-050 inbound at 8500' and hold.</p> <p>MAX 185 KT until inbound VOR. If unable to reach 8500' at VOR, intercept R-217 to cross 5500', then turn LEFT proceed to VOR on R-185 inbound at 8500' and hold.</p> | | | | | | | |
| Alt Set: hPa | | Rwy Elev: 10 hPa | | Trans level: By ATC | | Trans alt: 10000' | |



| | | |
|----------|-------|-------|
| HTY DME | 4.0 | 3.0 |
| ALTITUDE | 1460' | 1100' |



| | | | | | | | | | | | |
|---------------|-------|-----|-----|-----|-----|-----|-------|--------|---------|--------|----------|
| Gnd speed-Kts | 70 | 90 | 100 | 120 | 140 | 160 | HIALS | 185 KT | HTY | 2350' | HTY |
| Descent Angle | 3.44° | 426 | 548 | 609 | 730 | 852 | 974 | MAX | inbound | 112.05 | on R-030 |
| MAP at D2.1 | | | | | | | | | | | |

| | | | | | | | |
|--|-----------|-----------|--|----------------|---------------|-------|--|
| Standard STRAIGHT-IN LANDING RWY 04 | | | | CIRCLE-TO-LAND | | | |
| CDFA | | | | | | | |
| DA/MDA(H) 650' (385') | | | | | | | |
| ALS out | | | | | | | |
| A | RVR 1100m | | | Max Kts | MDA(H) | VIS | |
| B | | RVR 1800m | | 100 | 770' (503') | 1500m | |
| C | | | | 135 | 770' (503') | 1600m | |
| D | RVR 1200m | | | 180 | 2200' (1933') | 2400m | |
| | | | | 205 | 2860' (2593') | 3600m | |

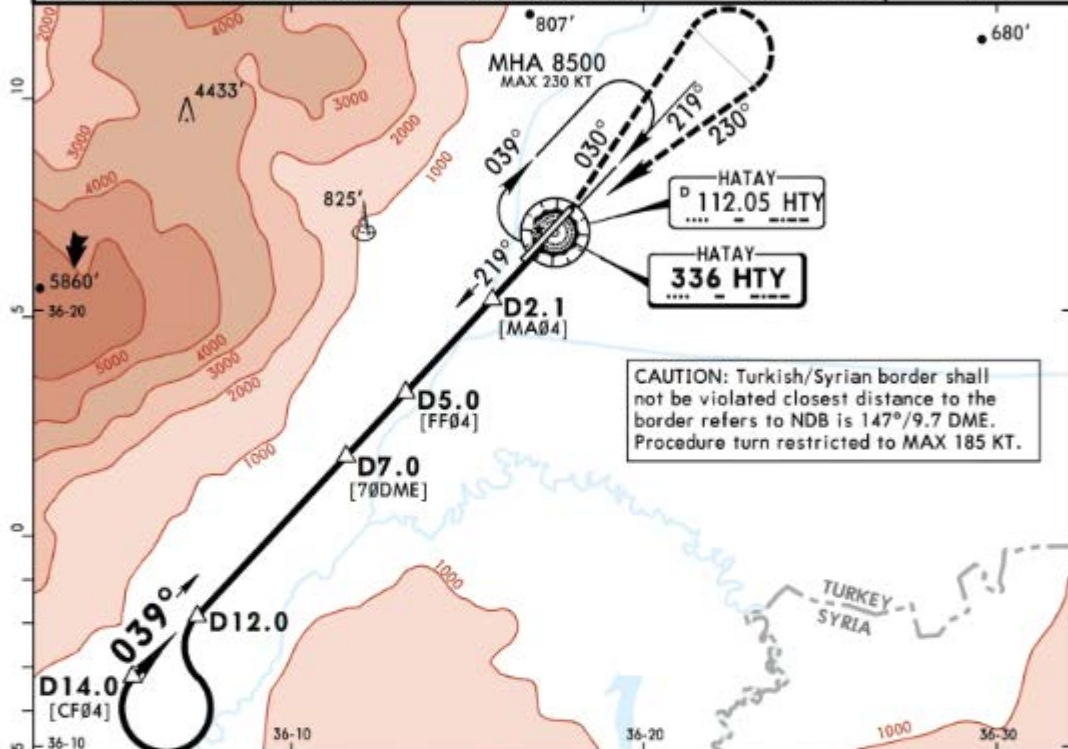
I or higher straight-in minimums.
CHANGES: Descent Angle. PAPI. Minimums. © JEPPESSEN, 2006, 2018. ALL RIGHTS RESERVED.

LTD A/HTY
HATAY

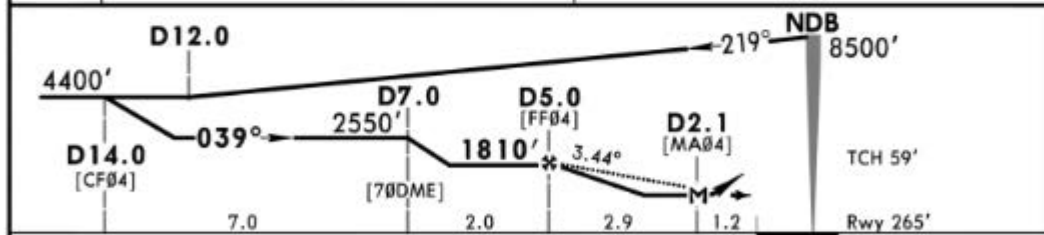
JEPPESEN
30 MAR 18 (16-1)

HATAY, TURKEY
NDB DME Rwy 04

| | | | | | | | |
|---|----------------------------------|---|---------------------------------|---------------------------|--|------------------------|--|
| *ATIS 121.25 | | *HATAY Approach 118.725 | | *HATAY Tower 128.525 | | *Ground 121.7 | |
| NDB HTY 336 | Final Apch Crs 039° | Minimum Alt D5.0 1810' (1545') | DA/MDA(H) 650' (385') | Apt Elev 267' Rwy 265' | | <p>MSA HTY NDB</p> | |
| <p>MISSED APCH: Climb on 030° from NDB to cross 2350', then turn RIGHT proceed to NDB on 230° inbound at 8500' and hold. MAX 185 KT until inbound NDB. If unable to reach 8500' at NDB intercept 217° from NDB to cross 5500', then turn LEFT proceed to NDB on 005° inbound at 8500' and hold.</p> | | | | | | | |
| Alt Set: hPa | | Rwy Elev: 10 hPa | | Trans level: By ATC | | Trans alt: 10000' | |



| | | |
|----------|-------|-------|
| HTY DME | 4.0 | 3.0 |
| ALTITUDE | 1460' | 1100' |



| | | | | | | | | | | |
|---------------|-------|-----|-----|-----|-----|-----|------|------------------|-------|----------|
| Gnd speed-Kts | 70 | 90 | 100 | 120 | 140 | 160 | HALS | 185 KT until HTY | 2350' | 030° |
| Descent Angle | 3.44° | 426 | 548 | 609 | 730 | 852 | 974 | MAX inbound | 336 | from HTY |
| MAP at D2.1 | | | | | | | | | | 336 |

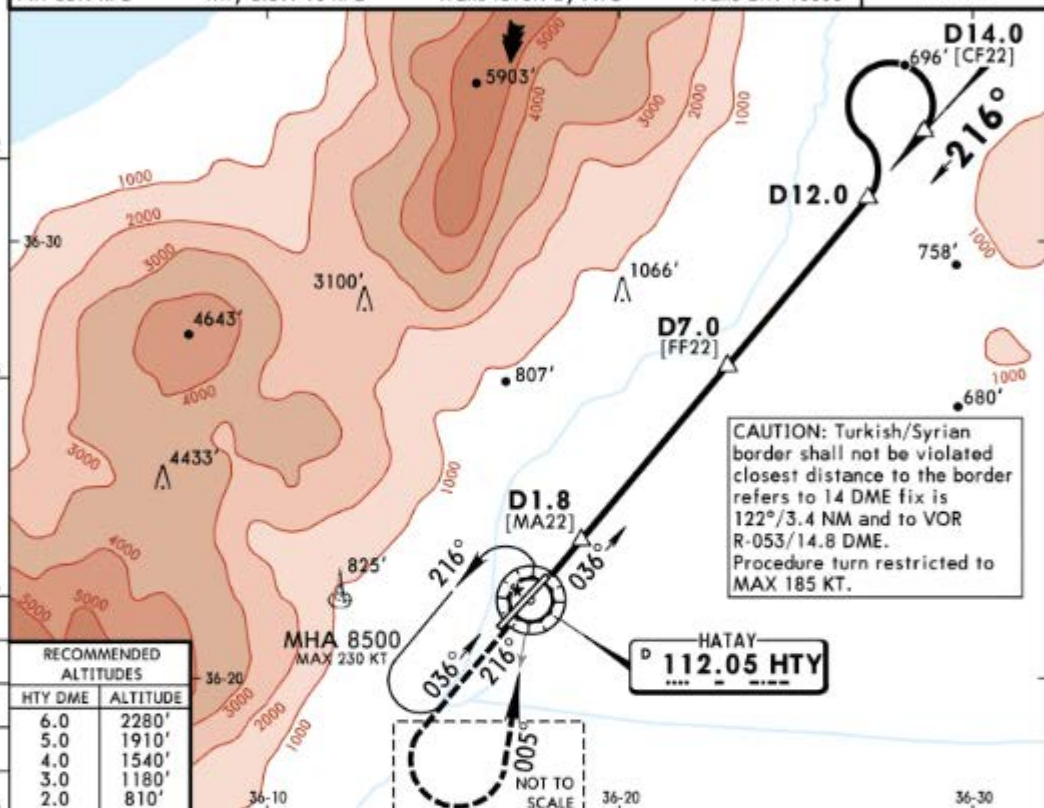
| | | | | | |
|---|-----------|-----------|----------------|---------------|-------|
| Standard STRAIGHT-IN LANDING RWY 04 CDFA DA/MDA(H) 650' (385') | | | CIRCLE-TO-LAND | | |
| ALS out | | | Max Kts | MDA(H) | VIS |
| A | RVR 1100m | RVR 1800m | 100 | 770' (503') | 1500m |
| B | | | 135 | 770' (503') | 1600m |
| C | RVR 1200m | | 180 | 2200' (1933') | 2400m |
| D | | | 205 | 2860' (2593') | 3600m |

LTDA/HTY
HATAY

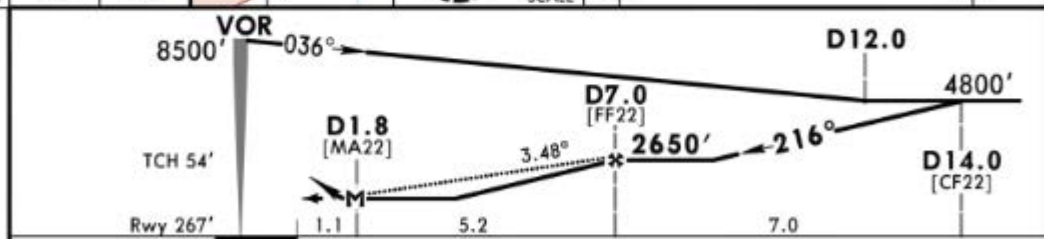
JEPPESEN
30 MAR 18 (13-2)

HATAY, TURKEY
VOR DME Rwy 22

| | | | | | | | |
|--|---------------------------------|---|---------------------------------|---------------------------|--|------------------------|--|
| *ATIS 121.25 | | *HATAY Approach 118.725 | | *HATAY Tower 128.525 | | *Ground 121.7 | |
| VOR HTY 112.05 | Final Apc Crs 216° | Minimum Alt D7.0 2650' (2383') | DA/MDA(H) 650' (383') | Apt Elev 267' Rwy 267' | | <p>MSA HTY VOR</p> | |
| <p>MISSED APCH: Climb on R-216 to cross 2300', then turn LEFT proceed to VOR on R-185 inbound at 8500' and hold.</p> <p>MAX 185 KT until inbound VOR. If unable to reach 8500' at VOR, intercept R-015 to cross 5500', then turn RIGHT climbing to cross VOR at 8500' and hold.</p> | | | | | | | |
| Alt Set: hPa | | Rwy Elev: 10 hPa | | Trans level: By ATC | | Trans alt: 10000' | |



| RECOMMENDED ALTITUDES | |
|-----------------------|----------|
| HTY DME | ALTITUDE |
| 6.0 | 2280' |
| 5.0 | 1910' |
| 4.0 | 1540' |
| 3.0 | 1180' |
| 2.0 | 810' |



| | | | | | | | | | | | |
|---------------|-------|-----|-----|-----|-----|-----|-------|--------|---------|--------|----------|
| Gnd speed-Kts | 70 | 90 | 100 | 120 | 140 | 160 | HIALS | 185 KT | HTY | 2300' | HTY |
| Descent Angle | 3.48° | 431 | 554 | 616 | 739 | 862 | 985 | MAX | inbound | 112.05 | on R-216 |
| MAP at D1.8 | | | | | | | | | | | |

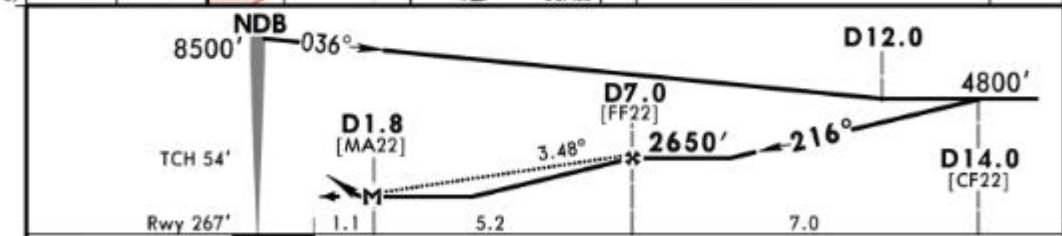
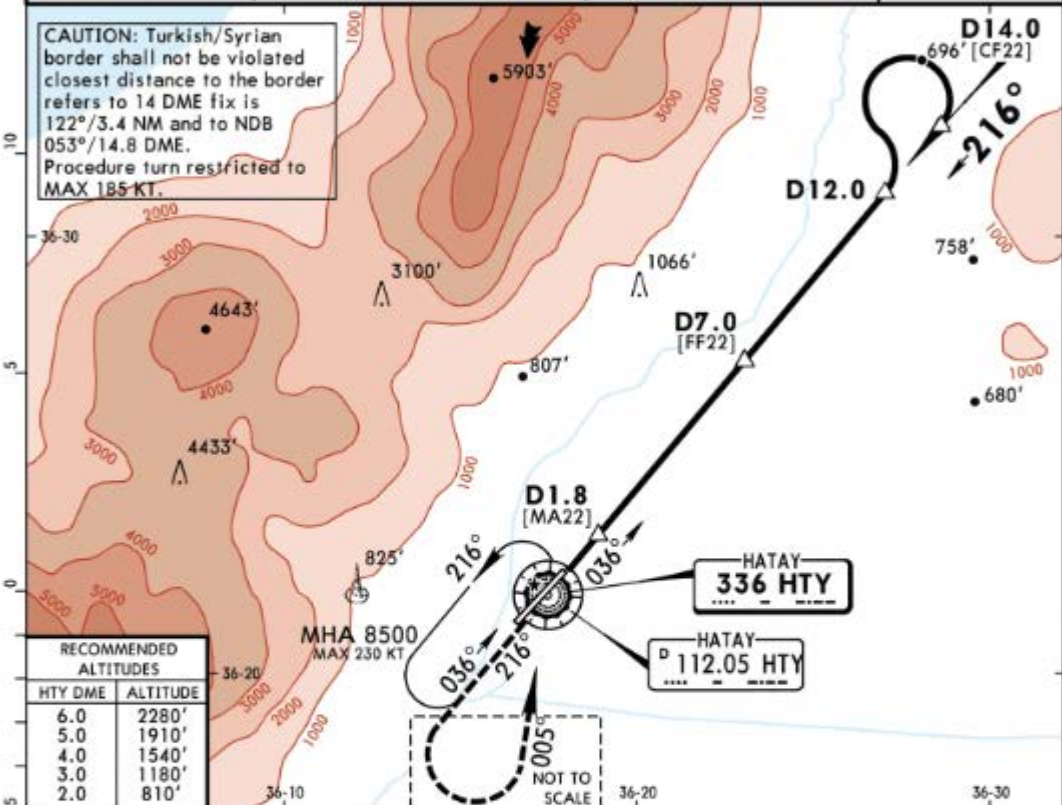
| | | | | | | | | | |
|--|-----------|--|--|----------------|--|---------------|--|-------|--|
| Standard STRAIGHT-IN LANDING RWY 22 | | | | CIRCLE-TO-LAND | | | | | |
| CDFA | | | | | | | | | |
| DA/MDA(H) 650' (383') | | | | | | | | | |
| ALS out | | | | Max Kts. | | | | | |
| A | RVR 1100m | | | RVR 1500m | | MDA(H) | | VIS | |
| B | | | | RVR 1500m | | 770' (503') | | 1500m | |
| C | | | | RVR 1800m | | 770' (503') | | 1600m | |
| D | | | | RVR 1800m | | 2200' (1933') | | 2400m | |
| | | | | 2860' (2593') | | 3600m | | | |

LTDA/HTY
HATAY

JEPPESEN
30 MAR 18 (16-2)

HATAY, TURKEY
NDB DMÉ Rwy 22

| | | | | | | | |
|---|----------------------------------|---|---------------------------------|---------------------------|--|------------------------|--|
| *ATIS 121.25 | | *HATAY Approach 118.725 | | *HATAY Tower 128.525 | | *Ground 121.7 | |
| NDB HTY 336 | Final Apch Crs 216° | Minimum Alt D7.0 2650' (2383') | DA/MDA(H) 650' (383') | Apt Elev 267' Rwy 267' | | <p>MSA HTY NDB</p> | |
| <p>MISSED APCH: Climb on 216° from NDB to cross 2300', then turn LEFT proceed to NDB on 005° inbound at 8500' and hold.</p> <p>MAX 185 KT until inbound NDB. If unable to reach 8500' at NDB, intercept 015° from NDB to cross 5500', then turn RIGHT climbing to cross NDB at 8500' and hold.</p> | | | | | | | |
| Alt Set: hPa | | Rwy Elev: 10 hPa | | Trans level: By ATC | | Trans alt: 10000' | |



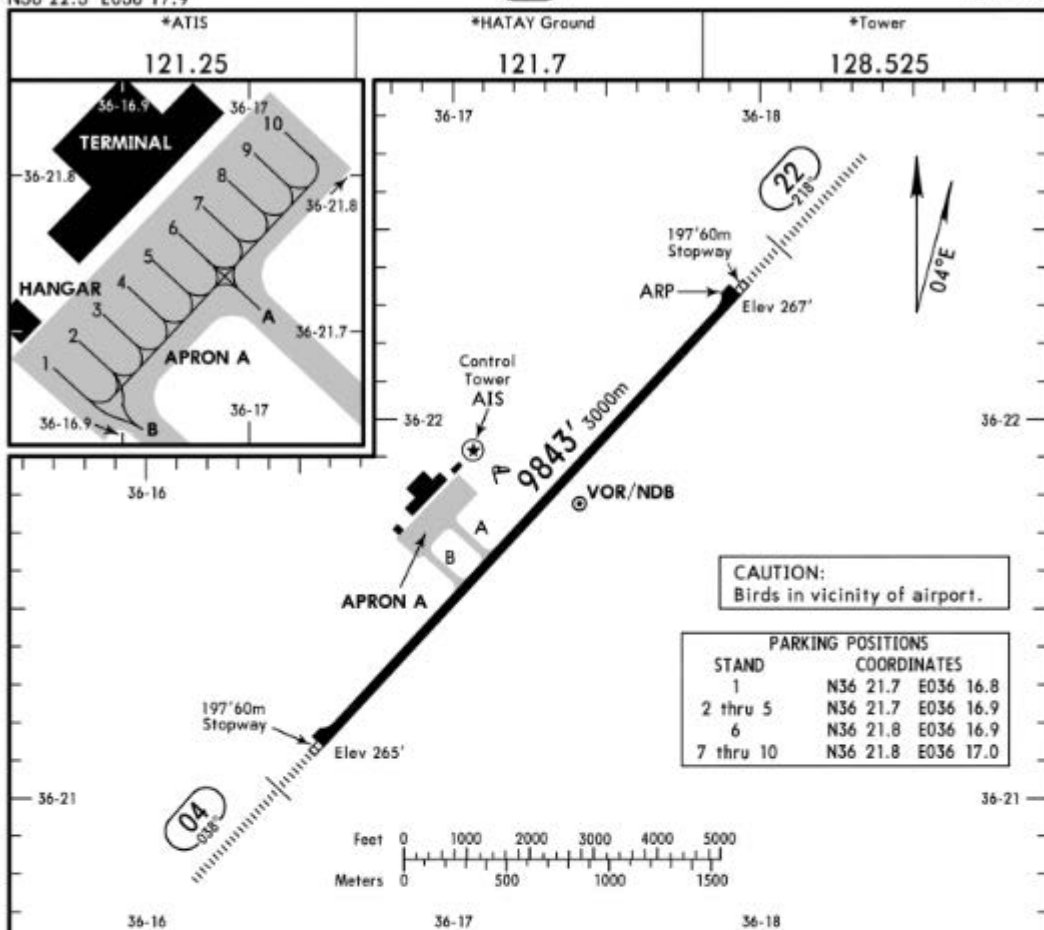
| | | | | | | | | | | | |
|---------------------|-----|-----|-----|-----|-----|-----|--------------|--------|---------|-------|--------------------|
| Grnd speed-Kts | 70 | 90 | 100 | 120 | 140 | 160 | HIALS | 185 KT | HTY | 2300' | 216° |
| Descent Angle 3.48° | 431 | 554 | 616 | 739 | 862 | 985 | REIL PAPI | MAX | inbound | 336 | from HTY 336 |
| MAP at D1.8 | | | | | | | | | | | |

| | | | | | | | |
|--|-----------|--|--|----------------|---------------|-------|--|
| Standard STRAIGHT-IN LANDING RWY 22 | | | | CIRCLE-TO-LAND | | | |
| CDFA | | | | | | | |
| DA/MDA(H) 650' (383') | | | | | | | |
| ALS out | | | | Max Kts | MDA(H) | VIS | |
| A | RVR 1500m | | | 100 | 770' (503') | 1500m | |
| B | RVR 1100m | | | 135 | 770' (503') | 1600m | |
| C | RVR 1800m | | | 180 | 2200' (1933') | 2400m | |
| D | RVR 1800m | | | 205 | 2860' (2593') | 3600m | |

LTDA/HTY
Apt Elev 267'
N36 22.3 E036 17.9

JEPPESSEN
1 JUN 18 (10-9)

HATAY, TURKEY
HATAY



ADDITIONAL RUNWAY INFORMATION

| RWY | USABLE LENGTHS | | | | TAKE-OFF | WIDTH |
|-----|---|-------------|--------|--|----------|-------|
| | LANDING | | BEYOND | | | |
| | Threshold | Glide Slope | | | | |
| 04 | HIRL (60m) HIALS SFL REIL PAPI-L (angle 3.3°) | 8810' | 2685m | | 1 | 148' |
| 22 | HIRL (60m) HIALS SFL REIL PAPI-L (angle 3.0°) | 8749' | 2667m | | | |

1 TAKE-OFF RUN AVAILABLE

RWY 04: From rwy head 9843' (3000m)
twy B int 6447' (1965m)
twy A int 5823' (1775m)

RWY 22: From rwy head 9843' (3000m)
twy A int 4019' (1225m)
twy B int 3396' (1035m)

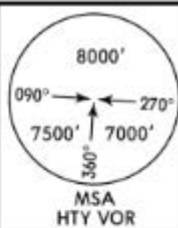
Standard

TAKE-OFF

| | Low Visibility Take-off | Day: RL or RCLM Night: RL | Adequate vis ref (Day only) |
|---|-------------------------|------------------------------|--------------------------------|
| A | | Day: RL or RCLM Night: RL | |
| B | | | |
| C | RVR 300m | 400m | 500m |
| D | | | |

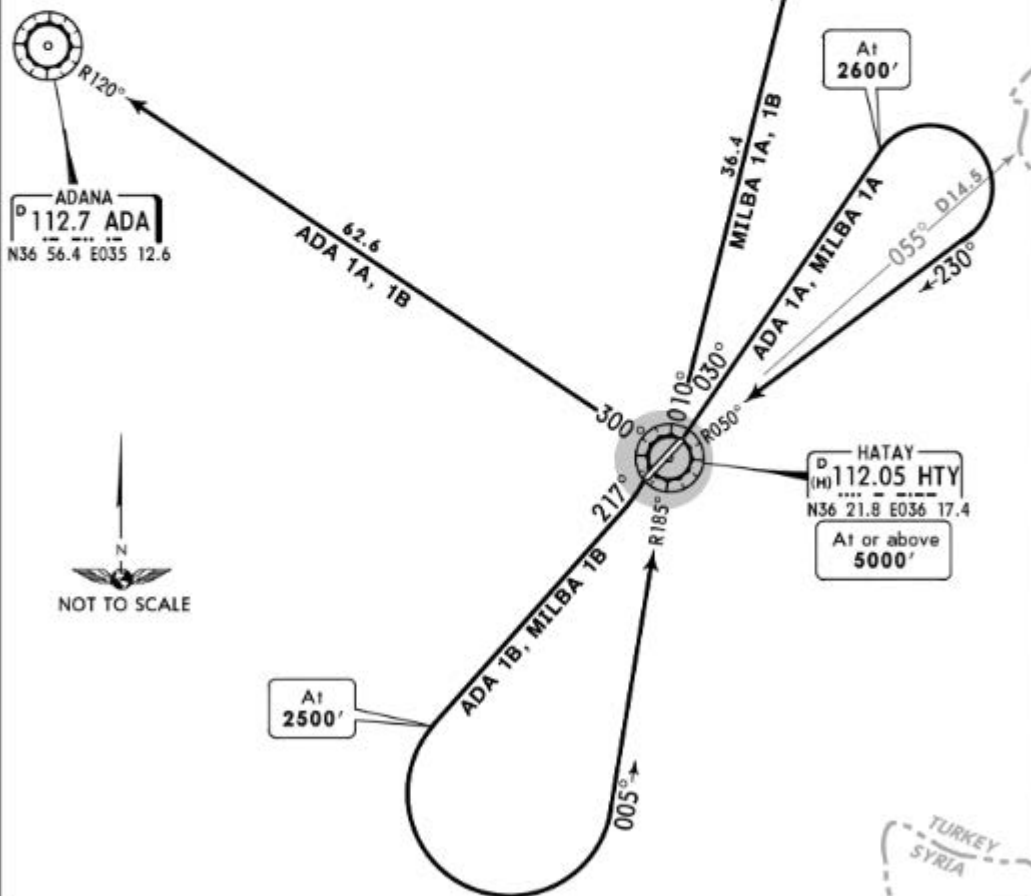
Apt Elev
267'

Trans level: By ATC Trans alt: 10000'



ADA ONE ALFA (ADA 1A)
ADA ONE BRAVO (ADA 1B)
MILBA ONE ALFA (MILBA 1A) [MILB1A]
MILBA ONE BRAVO (MILBA 1B) [MILB1B]
RWYS 04, 22 DEPARTURES
**SPEED: MAX 204 KT UNTIL
INBOUND TO HTY VOR**

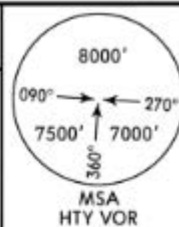
CAUTION
Turkish/Syrian border shall not be violated. Closest distance to the border for RWY 04 SIDs ref to HTY is depicted on chart.



| SID | RWY | ROUTING |
|----------|-----|--|
| ADA 1A | 04 | Climb on HTY R-030 to 2600', turn RIGHT, intercept HTY R-050 inbound to HTY, turn RIGHT, HTY R-300, join airway. |
| ADA 1B | 22 | Climb on HTY R-217 to 2500', turn LEFT, intercept HTY R-185 inbound to HTY, turn LEFT, HTY R-300, join airway. |
| MILBA 1A | 04 | Climb on HTY R-030 to 2600', turn RIGHT, intercept HTY R-050 inbound to HTY, turn RIGHT, HTY R-010, join airway. |
| MILBA 1B | 22 | Climb on HTY R-217 to 2500', turn LEFT, intercept HTY R-185 inbound to HTY, turn RIGHT, HTY R-010, join airway. |

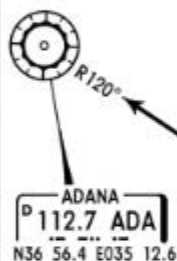
Apt Elev
267'

Trans level: By ATC Trans alt: 10000'

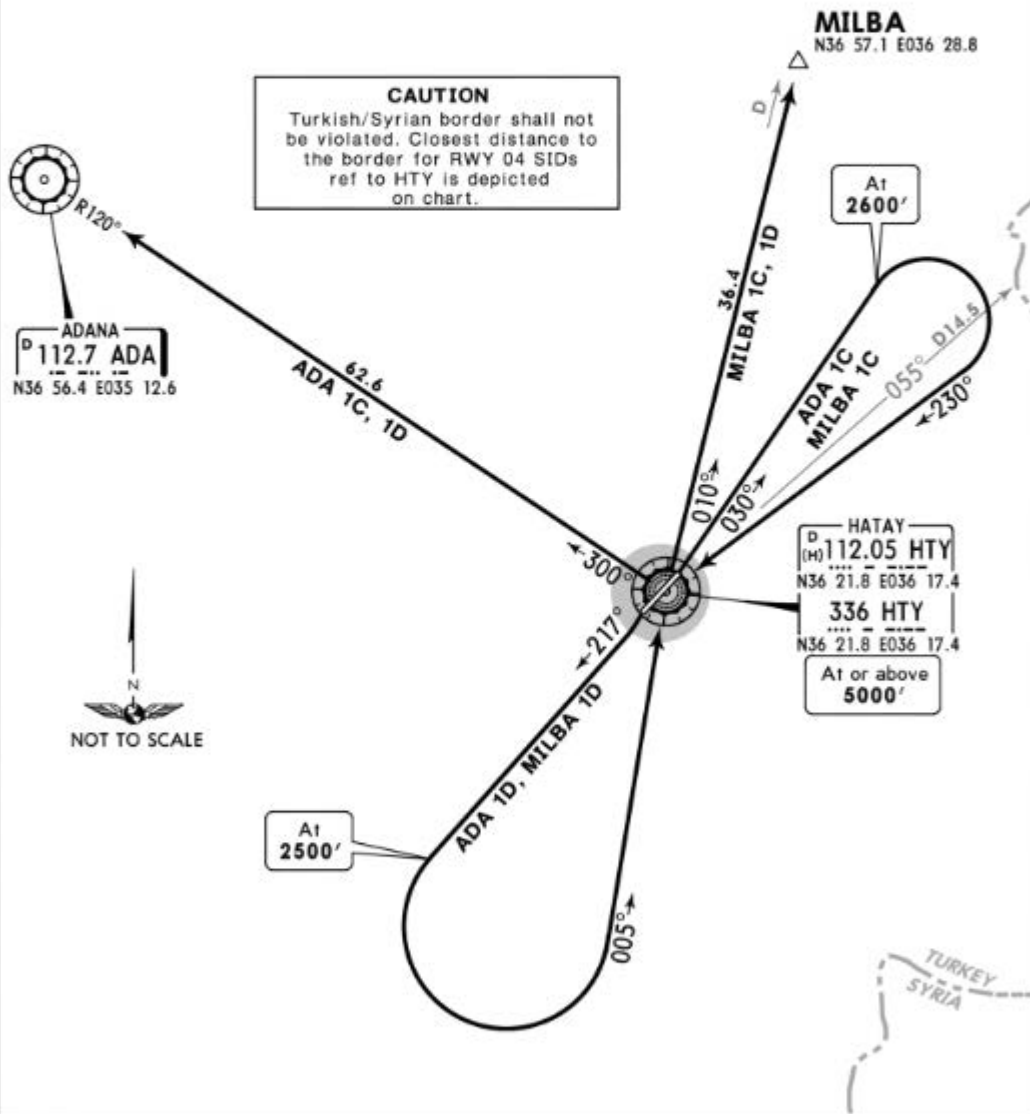


ADA ONE CHARLIE (ADA 1C)
ADA ONE DELTA (ADA 1D)
MILBA ONE CHARLIE (MILBA 1C) [MILB1C]
MILBA ONE DELTA (MILBA 1D) [MILB1D]
RWYS 04, 22 DEPARTURES
**SPEED: MAX 204 KT UNTIL
INBOUND TO HTY NDB**

CAUTION
Turkish/Syrian border shall not be violated. Closest distance to the border for RWY 04 SIDs ref to HTY is depicted on chart.



MILBA
N36 57.1 E036 28.8



HATAY
D 112.05 HTY
N36 21.8 E036 17.4
336 HTY
N36 21.8 E036 17.4
At or above 5000'

| SID | RWY | ROUTING |
|----------|-----|--|
| ADA 1C | 04 | Climb on 030° bearing from HTY NDB to 2600', turn RIGHT, intercept 230° bearing to HTY NDB, turn RIGHT, 300° bearing, join airway. |
| ADA 1D | 22 | Climb on 217° bearing from HTY NDB to 2500', turn LEFT, intercept 005° bearing to HTY NDB, turn LEFT, 300° bearing, join airway. |
| MILBA 1C | 04 | Climb on 030° bearing from HTY NDB to 2600', turn RIGHT, intercept 230° bearing to HTY NDB, turn RIGHT, 010° bearing, join airway. |
| MILBA 1D | 22 | Climb on 217° bearing from HTY NDB to 2500', turn LEFT, intercept 005° bearing to HTY NDB, turn RIGHT, 010° bearing, join airway. |