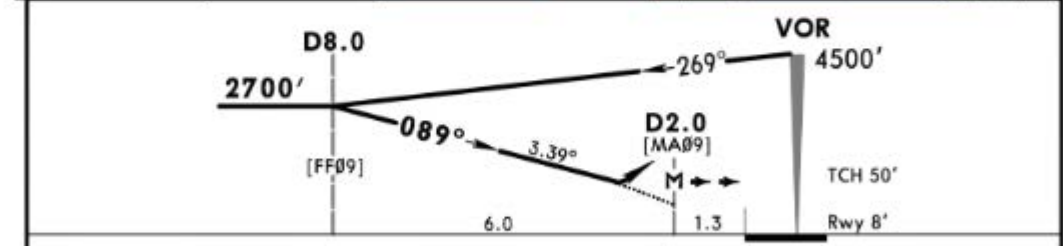
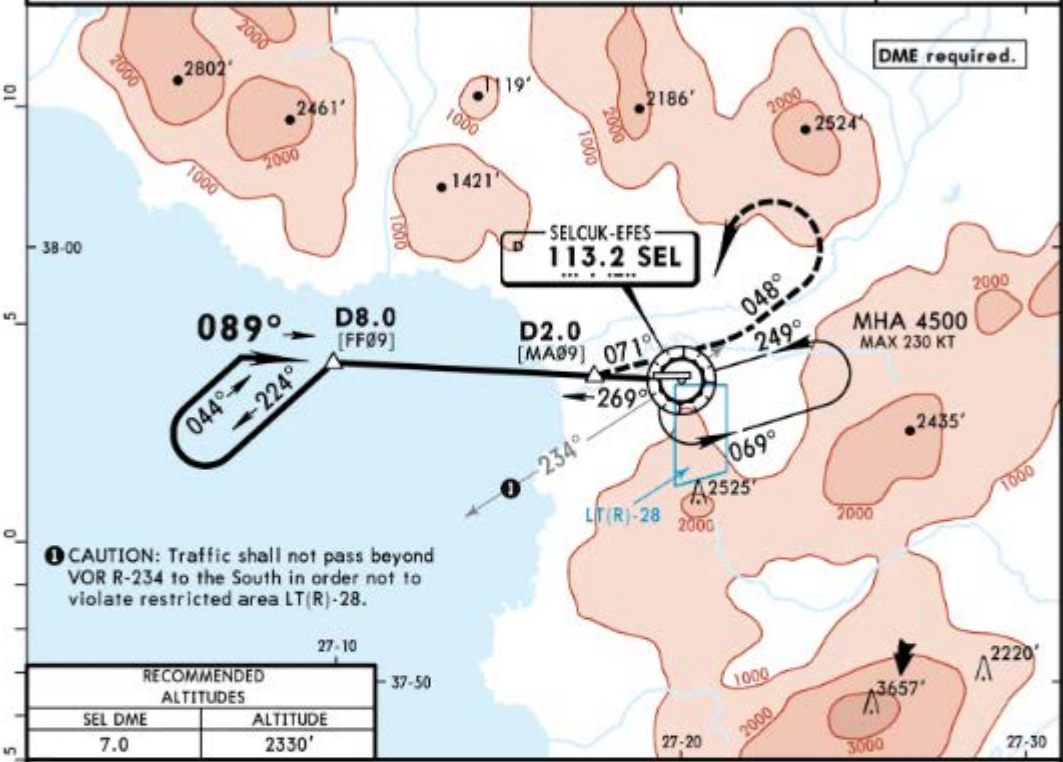


LTFB
SELÇUK-EFES

JEPPESEN
23 FEB 18 **(33-1)** Eff 1 Mar

IZMIR, TURKEY
VOR Z Rwy 09

MENDERES Approach/Radar 119.45 120.1 134.2			*EFES Approach within 5 NM from ARP 133.05		*EFES Tower 133.05
VOR SEL 113.2	Final Apch Crs 089°	Minimum Alt D8.0 2700' (2692')	DA/MDA(H) 2000' (1992')	Apt Elev 10' Rwy 8'	
MISSED APCH: Turn LEFT on 071° to intercept R-048. Climb to 2700', then turn LEFT climbing to 4500' to VOR and hold. MAX 185 KT until intercepting R-048.					
Alt Set: hPa		Rwy Elev: 0 hPa	Trans alt: By ATC		Trans alt: 10000'
Procedure turn restricted to MAX 185 KT.					



Grnd speed-Kts	70	90	100	120	140	160	VASI	Refer to Missed Apch above
Descent Angle 3.39°	420	540	600	720	840	960		
MAP at D2.0								

Standard		STRAIGHT-IN LANDING RWY 09		CIRCLE-TO-LAND	
CDFA DA/MDA(H) 2000' (1992')				Not authorized South of airport	
A				Max Kts	MDA(H) _____ VIS _____
B				100	2000' (1990') I 1500m
C				135	2000' (1990') I 1600m
D				180	2860' (2850') I 2400m
				205	2860' (2850') I 3600m
RVR 5000m I or higher straight-in minimums.					

LTFB
SELÇUK-EFES

JEPPESSEN

23 FEB 18

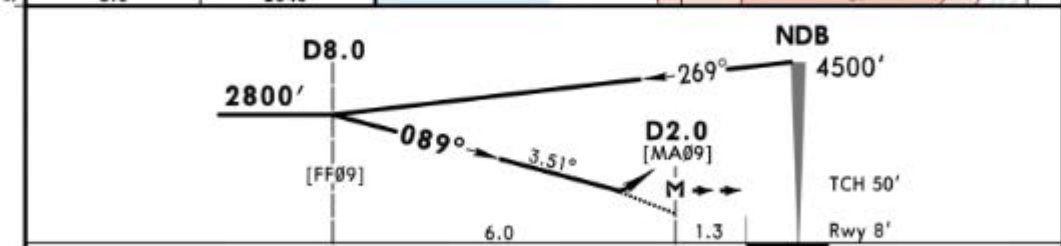
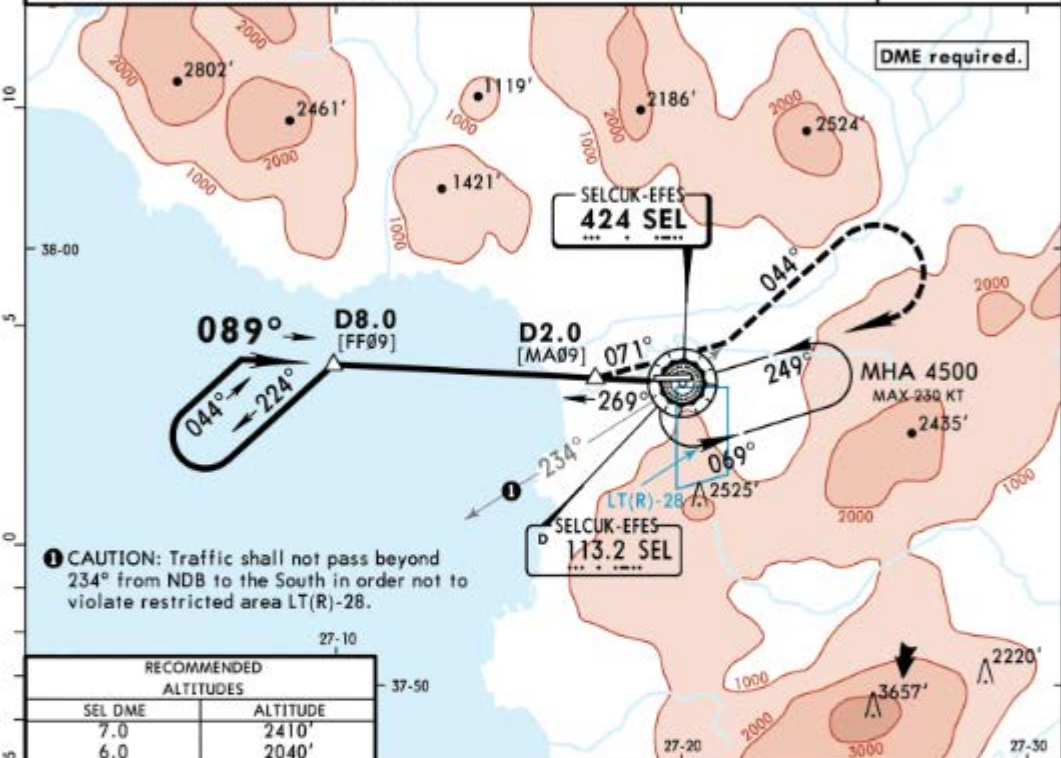
(36-1)

Eff 1 Mar

CAT A, B & C

IZMIR, TURKEY
NDB Y Rwy 09

MENDERES Approach/Radar			*EFES Approach within 5 NM from ARP		*EFES Tower
119.45	120.1	134.2	133.05		133.05
NDB SEL 424	Final Apch Crs 089°	Minimum Alt D8.0 2800' (2792')	DA/MDA(H) 2000' (1992')	Apt Elev 10'	Rwy 8'
MISSED APCH: Turn LEFT on 071° to intercept 044° from NDB. Climb to 2700', then turn RIGHT and climbing to 4500' proceed to NDB and hold. MAX 185 KT until intercepting 044° from NDB.					
Alt Set: hPa Rwy Elev: 0 hPa Trans alt: By ATC Trans alt: 10000' Procedure turn restricted to MAX 185 KT.					



Gnd speed-Kts	70	90	100	120	140	160	VASI	Refer to Missed Apch above
Descent Angle 3.51°	435	559	621	745	870	994		
MAP at D2.0								

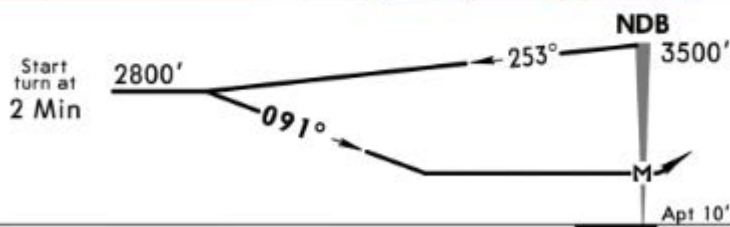
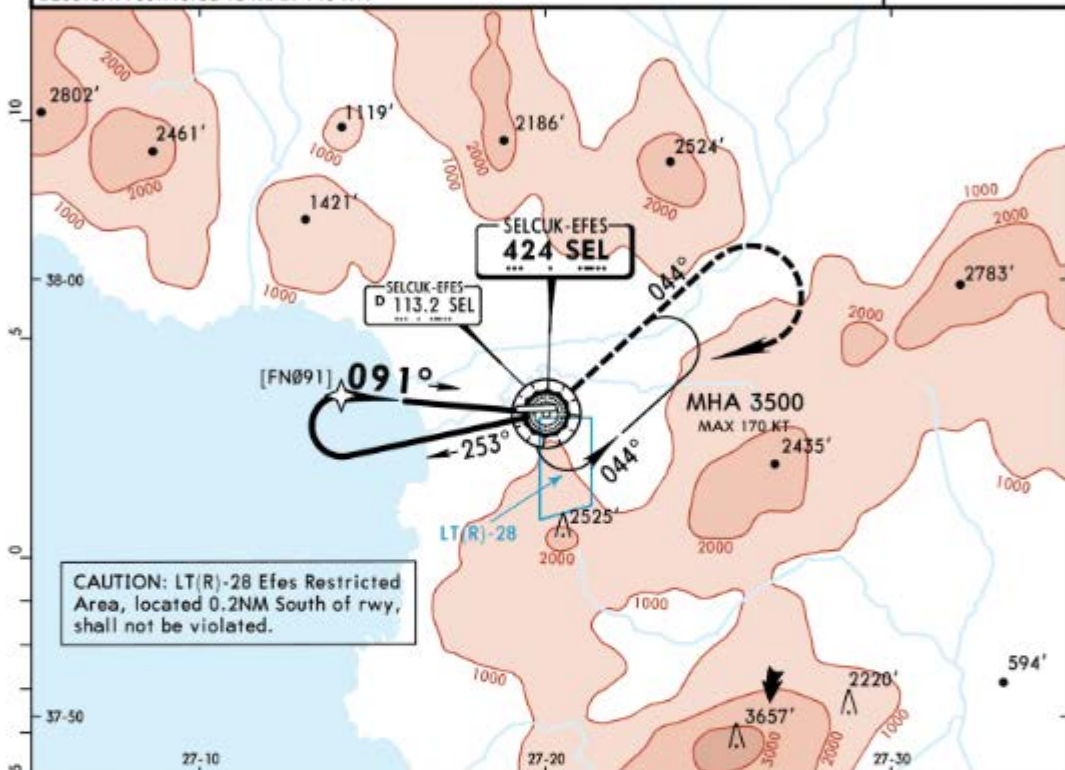
Standard		STRAIGHT-IN LANDING RWY 09		CIRCLE-TO-LAND	
CDFA				Not authorized South of airport	
DA/MDA(H) 2000' (1992')				Max Kts	MDA(H) VIS
A	RVR 5000m			100	2000' (1990') 1500m
B				135	2000' (1990') 1600m
C	NOT APPLICABLE			180	2860' (2850') 2400m
D				NOT APPLICABLE	

LTFB
SELÇUK-EFES

JEPPesen
23 FEB 18 **(36-2)** Eff 1 Mar

IZMIR, TURKEY
NDB Z
CAT A & B

MENDERES Approach/Radar			*EFES Approach within 5 NM from ARP		*EFES Tower
119.45	120.1	134.2	133.05		133.05
NDB SEL 424	Final Apch Crs 091°	Minimum Alt No FAF	MDA(H) 2100' (2090')	Apt Elev 10'	
MISSED APCH: Climb on 044° from NDB to 2500', then climbing turn RIGHT to NDB to 3500' and hold.					
Alt Set: hPa		Apt Elev: 0 hPa	Trans alt: By ATC		Trans alt: 10000'
Baseturn restricted to MAX 140 KT.					MSA SEL NDB



MAP at NDB				Lighting - Refer to Airport Chart	2500'	044° from SEL 424
Standard				LT	on	

CIRCLE-TO-LAND

Not authorized South of airport

	Max Kts	MDA(H)	VIS
A	100	2100' (2090')	1500m
B	135	2100' (2090')	1600m

NOT APPLICABLE

PANS OPS

LTFB

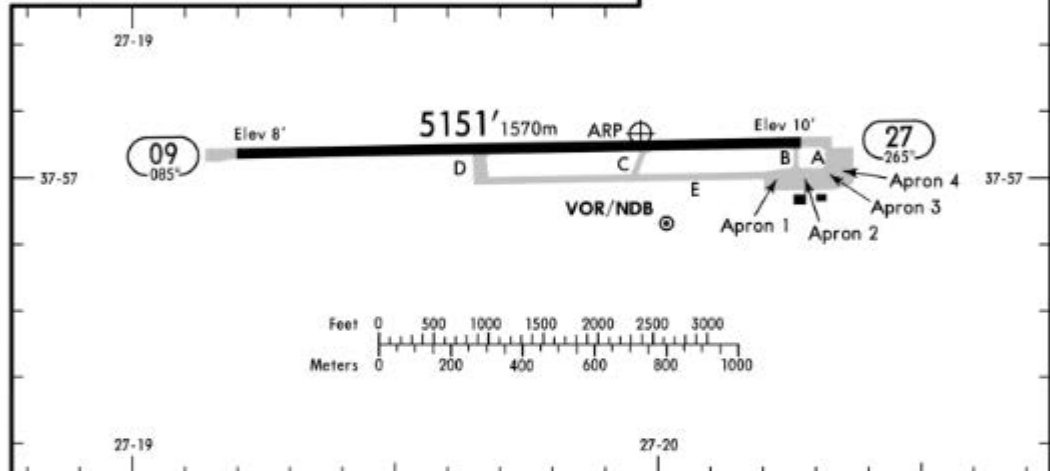
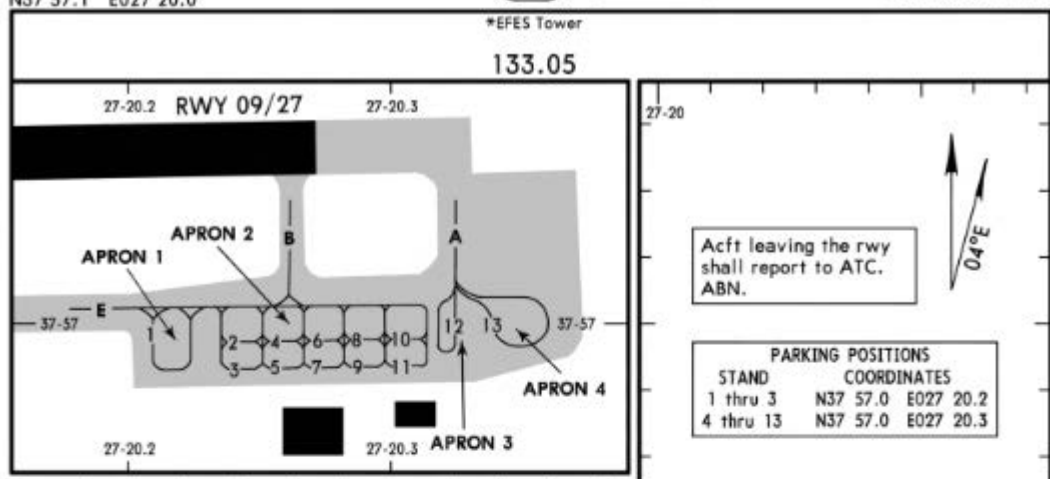
Apt Elev 10'
N37 57.1 E027 20.0

JEPPESEN

23 FEB 18 (30-9) Eff 1 Mar

IZMIR, TURKEY

SELCUK-EFES



RWY	ASPH	SURF	USABLE LENGTHS		TAKE-OFF	WIDTH
			LANDING BEYOND THRESHOLD	GLIDE SLOPE		
09		VASI				98' 30m
27						

Standard	TAKE-OFF	
	RCLM (Day only)	Adequate vis ref (Day only)
A		
B		
C	400m	500m
D		

CHANGES: Apt and rwys elev. Aprons. Twys. Stands. Notes. Lights withdrawn. © JEPPESEN, 2011, 2018. ALL RIGHTS RESERVED.