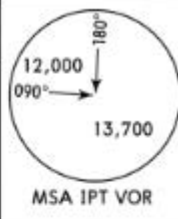


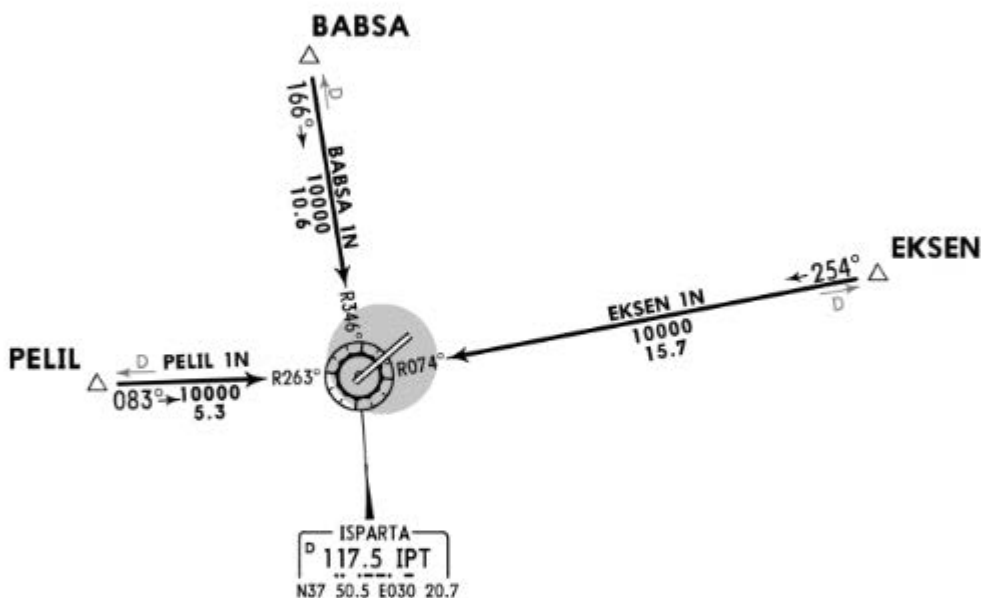
\*ATIS  
129.025

Apt Elev  
2835'

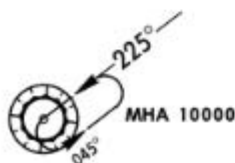
Alt Set: hPa Trans level: By ATC Trans alt: 15000'



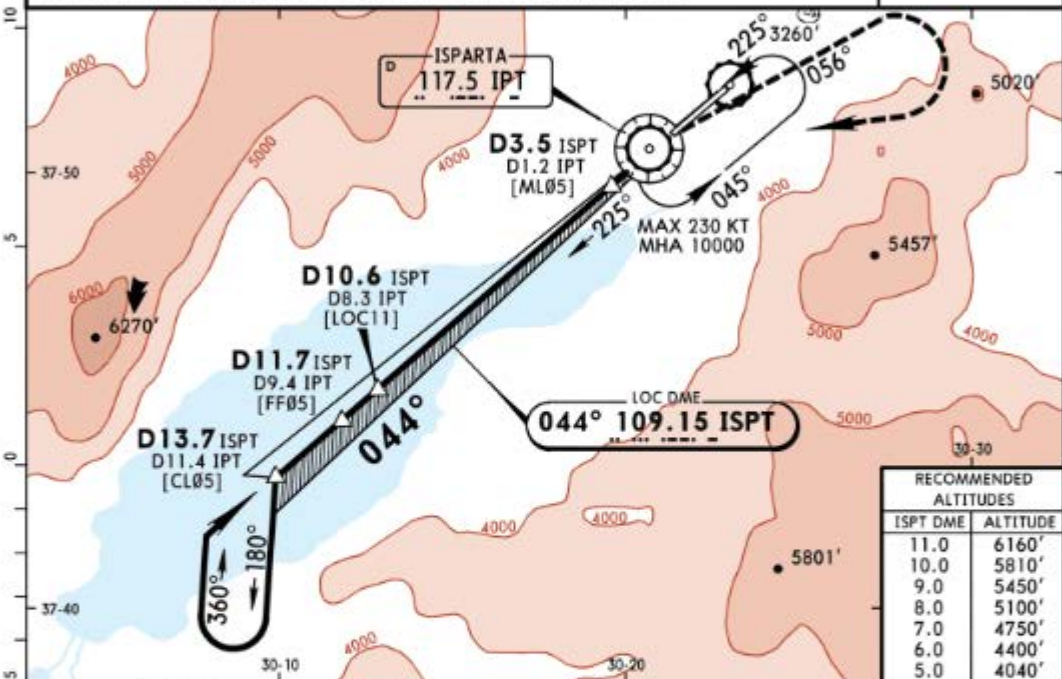
BABSA 1N [BABS1N]  
EKSEN 1N [EKSE1N]  
PELIL 1N [PELI1N]  
ARRIVALS  
BASED ON IPT VOR



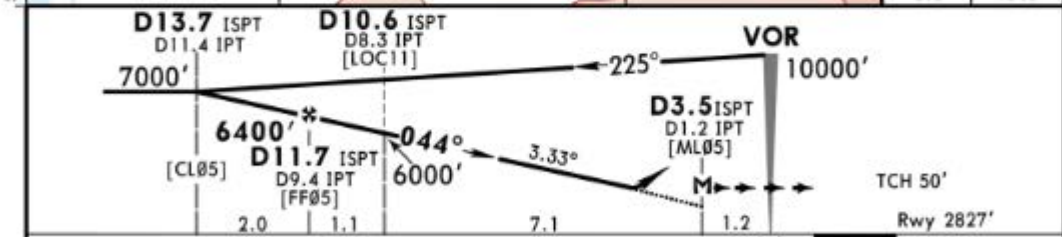
HOLDING OVER  
IPT VOR



*ATIS 129.025		*ANTALYA Approach 124.350		*ISPARTA Tower 118.3 118.65		*Ground 121.7
LOC ISPT <b>109.15</b>	Final Aph Crs <b>044°</b>	Minimum Alt D11.7 ISPT <b>6400'</b> (3573')	DA/MDA(H) Refer to Minimums	Apt Elev 2835' Rwy 2827'		
<b>MISSED APCH:</b> Climb on R-056, after passing 5200' turn RIGHT climbing to VOR to 10000' and hold. MAX 185 KT until inbound to VOR. If unable to reach 10000', climb on R-225, after passing 8400' turn LEFT climbing to VOR to 10000' and hold.						<p>MSA IPT VOR</p>
Alt Set: hPa Rwy Elev: 99 hPa Trans level: By ATC Trans alt: 15000'						
1. VOR DME required. 2. CAUTION: Due to heavy VFR training flights at and vicinity of airport, TCAS indications may arise. 3. CAUTION: Dust/Sand whirls may be expected in the vicinity of airport. 4. Procedure turn restricted to MAX 185 KT.						



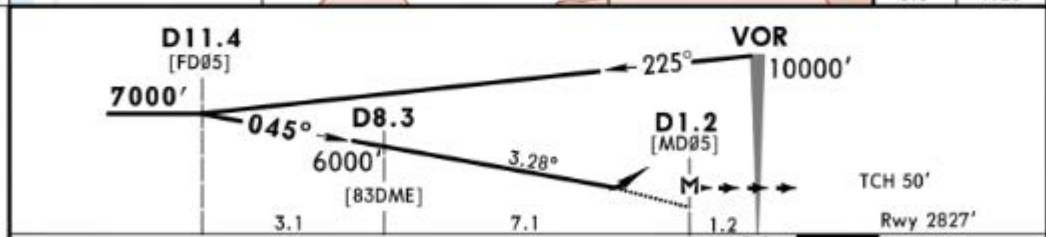
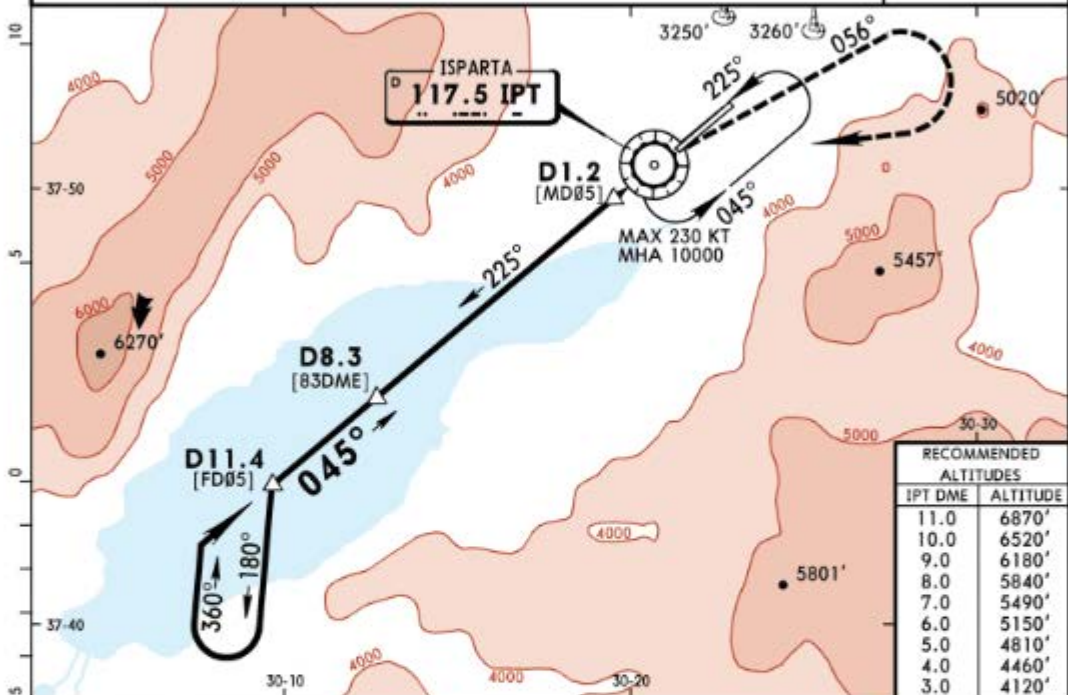
RECOMMENDED ALTITUDES	
ISPT DME	ALTITUDE
11.0	6160'
10.0	5810'
9.0	5450'
8.0	5100'
7.0	4750'
6.0	4400'
5.0	4040'



Gnd speed-Kts	70	90	100	120	140	160	HIALS PAPI PAPI	185 KT MAX 5200' IPT via 117.5 RT R-056	
Descent Angle	3.33°	412	530	589	707	825			943
MAP at D3.5 ISPT/D1.2 IPT									

	STRAIGHT-IN LANDING RWY 05		CIRCLE-TO-LAND		
	Missed apch climb grad mim 3.5% CDFA DA/MDA(H) <b>3500'</b> (673')	Missed apch climb grad mim 2.5% CDFA DA/MDA(H) <b>3750'</b> (923')	Max Kts	MDA(H)	VIS
A	RVR 1500m	RVR 1500m	100	4200' (1365')	1500m
B	RVR 1500m	RVR 1500m	135	4200' (1365')	1600m
C	RVR 2400m	RVR 2400m	180	5450' (2615')	2400m
D	RVR 2400m	RVR 2400m	205	5900' (3065')	3600m

*ATIS 129.025		*ANTALYA Approach 124.350		*ISPARTA Tower 118.3 118.65		*Ground 121.7	
VOR IPT <b>117.5</b>	Final Apch Crs <b>045°</b>	Minimum Alt <b>D11.4</b> 7000' (4173')	DA/MDA(H) <b>3900'</b> (1073')	Apt Elev 2835' Rwy 2827'	<p>MSA IPT VOR</p>		
<b>MISSED APCH:</b> Climb on R-056, after passing 5200' turn RIGHT climbing to VOR to 10000' and hold. MAX 185 KT until inbound to VOR. If unable to reach 10000', climb on R-225, after passing 8400' turn LEFT climbing to 10000'.							
Alt Set: hPa Rwy Elev: 99 hPa Trans level: By ATC Trans alt: 15000'							
1. DME required. 2. CAUTION: Due to heavy VFR training flights at and vicinity of airport, TCAS indications may arise. 3. CAUTION: Dust/Sand whirls may be expected in the vicinity of airport. 4. Procedure turn restricted to MAX 185 KT.							

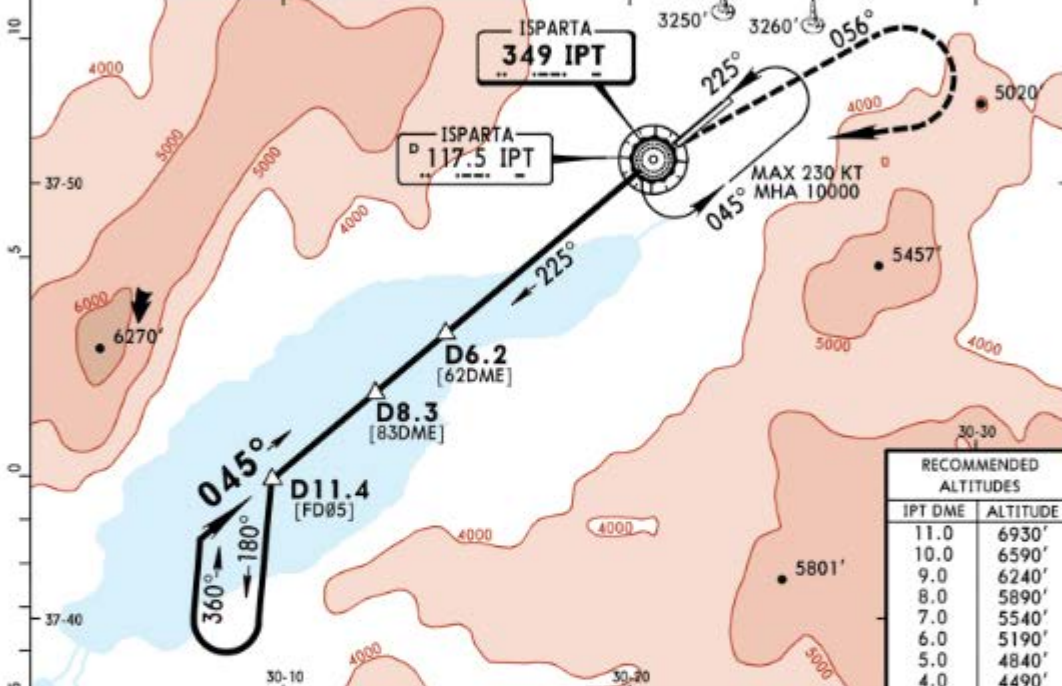
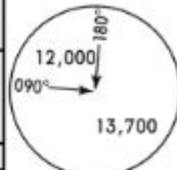


Gnd speed-Kts	70	90	100	120	140	160	HIALS PAPI PAPI <b>185 KT</b> <b>5200'</b> IPT MAX via <b>117.5</b> RT <b>R-056</b>
Descent Angle	3.28°	406	522	580	696	813	
MAP at D1.2							

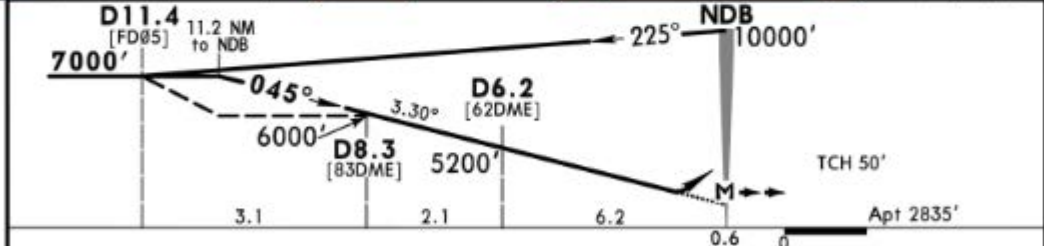
PANS OPS	<b>Standard</b> STRAIGHT-IN LANDING RWY 05			CIRCLE-TO-LAND		
	CDFA					
	DA/MDA(H) <b>3900'</b> (1073')					
		ALS out		Max Kts	MDA(H)	VIS
A			100	<b>4200'</b> (1365')	1500m	
B	RVR 1500m		135	<b>4200'</b> (1365')	1600m	
C			180	<b>5450'</b> (2615')	2400m	
D	RVR 2400m		205	<b>5900'</b> (3065')	3600m	



*ATIS 129.025	*ANTALYA Approach 124.350	*ISPARTA Tower 118.3	118.65	*Ground 121.7
NDB IPT <b>349</b>	Final Apch Crs <b>045°</b>	Minimum Alt D11.4 <b>7000'</b> (4165')	MDA(H) Refer to Minimums	Apt Elev 2835'
<b>MISSED APCH: Climb on R-056, after passing 5200' turn RIGHT climbing to NDB to 10000' and hold. MAX 185 KT until inbound to VOR. If unable to reach 10000' climb on R-225, after passing 8400' turn LEFT climbing to 10000'.</b>				
Alt Set: hPa    Apt Elev: 100 hPa    Trans level: By ATC    Trans alt: 15000'				
1. DME required. 2. CAUTION: Due to heavy VFR training flights at and vicinity of airport, TCAS indications may arise. 3. CAUTION: Dust/Sand whirls may be expected in the vicinity of airport. 4. Procedure turn restricted to MAX 185 KT.				



RECOMMENDED ALTITUDES	
IPT DME	ALTITUDE
11.0	6930'
10.0	6590'
9.0	6240'
8.0	5890'
7.0	5540'
6.0	5190'
5.0	4840'
4.0	4490'



Grnd speed-Kts	70	90	100	120	140	160	Lighting - Refer to Airport Chart	185 KT MAX	5200' via 117.5 IPT RT R-056
Descent Angle 3.30°	409	526	584	701	817	934			

MAP at NDB **Standard** CIRCLE-TO-LAND

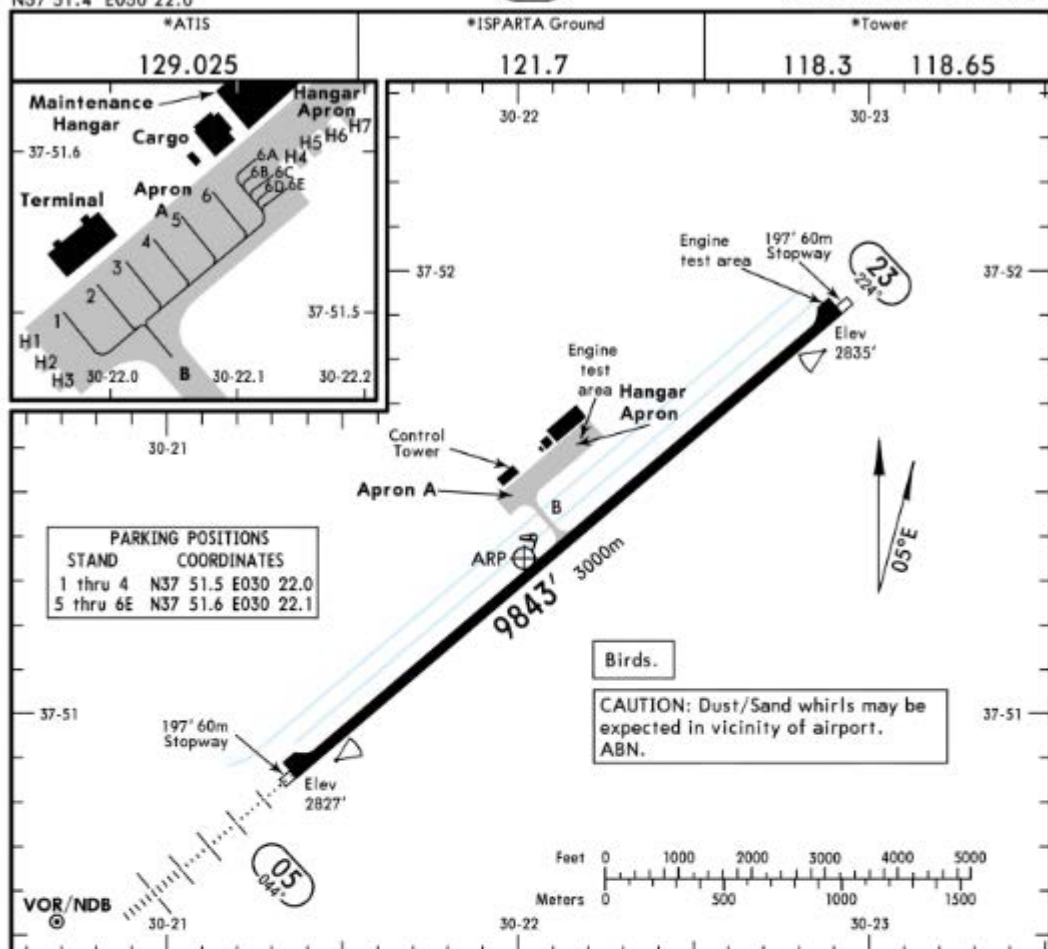
	Max Kts	MDA(H)	VIS
A	100	<b>4200'</b> (1365')	1500m
B	135	<b>4200'</b> (1365')	1600m
C	180	<b>5450'</b> (2615')	2400m
D	205	<b>5900'</b> (3065')	3600m

PANS OPS

LTFC/ISE  
 Apt Elev 2835'  
 N37 51.4 E030 22.0

JEPPESEN  
 8 FEB 19 (10-9)

ISPARTA, TURKEY  
 SULEYMAN DEMIREL



ADDITIONAL RUNWAY INFORMATION

RWY	LANDING BEYOND			TAKE-OFF	WIDTH
	HIRL (60m)	HIALS PAPI (3.0°)	RVR		
05	HIRL (60m)	HIALS PAPI (3.0°)	RVR		148'
23	HIRL (60m)	PAPI (3.0°)	RVR	<b>1</b>	45m

**1 TAKE-OFF RUN AVAILABLE**  
**RWY 05:** From rwy head 9843' (3000m)  
 twy B int 4921' (1500m)  
**RWY 23:** From rwy head 9843' (3000m)  
 twy B int 4921' (1500m)

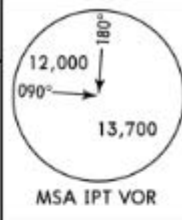
Standard TAKE-OFF		
Low Visibility Take-off		
Day: RL & RCLM Night: RL	Day: RL or RCLM Night: RL	Adequate vis ref (Day only)
A		
B		
C	RVR 300m	400m
D		500m

CHANGES: ATIS added.

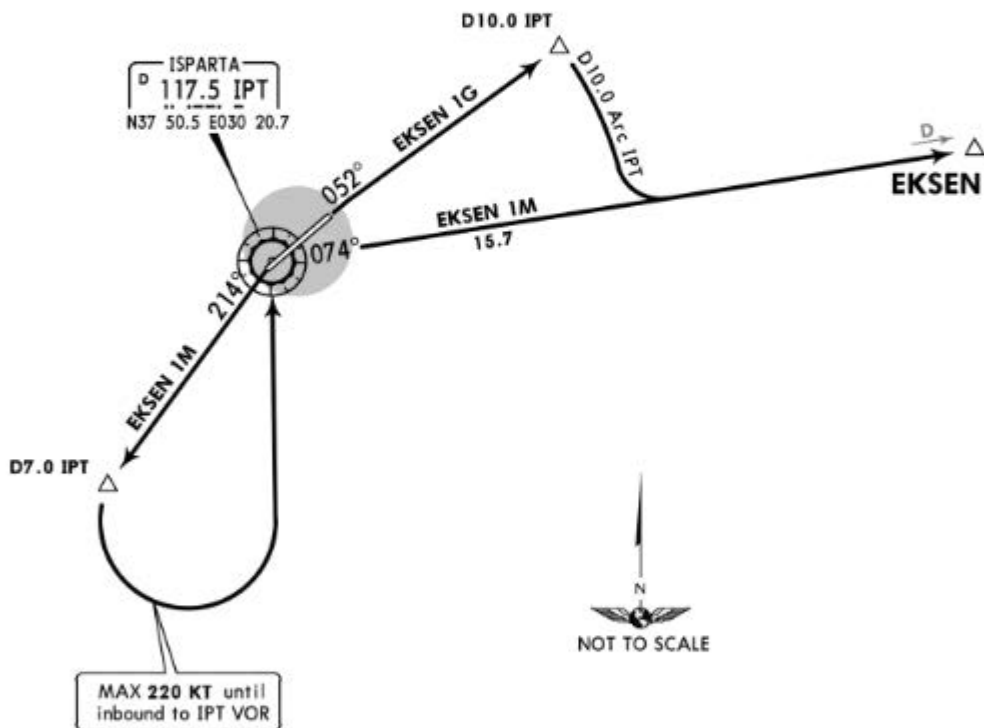
© JEPPESEN, 2000, 2019. ALL RIGHTS RESERVED.

Apt Elev  
2835'

Trans level: By ATC Trans alt: 15000'



EKSEN 1G [EKSE1G]  
EKSEN 1M [EKSE1M]  
DEPARTURES



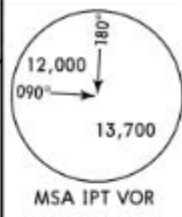
These SIDs require a minimum climb gradient of 304' per NM (5%) until passing 11000'.

Gnd speed-KT	75	100	150	200	250	300
304' per NM	380	506	760	1013	1266	1519

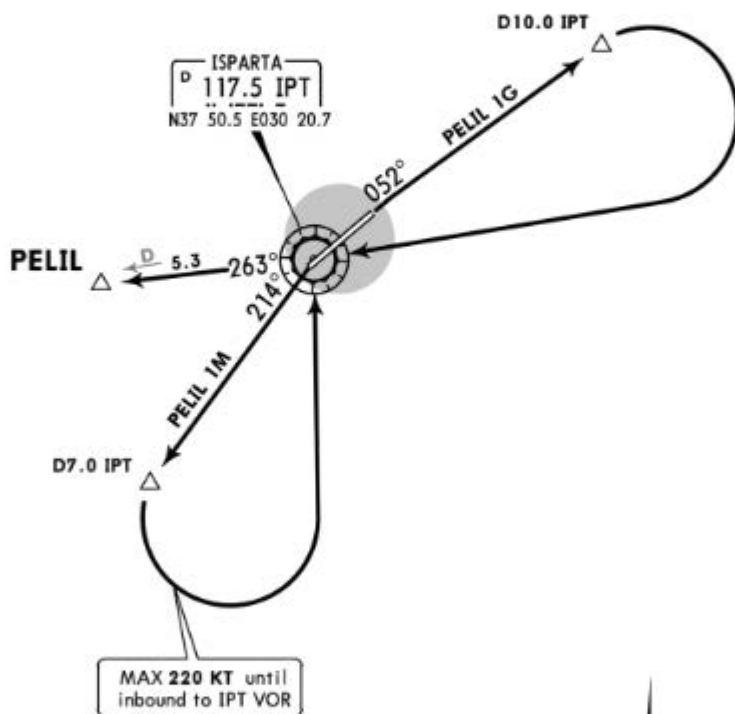
SID	RWY	ROUTING
EKSEN 1G	05	Climb on IPT R-052 to D10.0 IPT, turn RIGHT, along D10.0 Arc IPT, intercept IPT R-074 to EKSEN, join airway.
EKSEN 1M	23	Climb on IPT R-214 to D7.0 IPT, turn LEFT to IPT VOR, IPT R-074 to EKSEN, join airway.

Apt Elev  
2835'

Trans level: By ATC Trans alt: 15000'



PELIL 1G [PELI1G]  
PELIL 1M [PELI1M]  
DEPARTURES



These SIDs require a minimum climb gradient of 304' per NM (5%) until passing 9000'.

Gnd speed-KT	75	100	150	200	250	300
304' per NM	380	506	760	1013	1266	1519

SID	RWY	ROUTING
PELIL 1G	05	Climb on IPT R-052 to D10.0 IPT, turn RIGHT to IPT VOR, IPT R-263 to PELIL, join airway.
PELIL 1M	23	Climb on IPT R-214 to D7.0 IPT, turn LEFT to IPT VOR, IPT R-263 to PELIL, join airway.