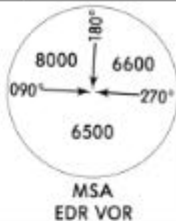


ATIS
127.275

Apt Elev
51'

Alt Set: hPa Trans level: By ATC Trans alt: 10000'
 1. RNAV (GNSS).
 2. RNP-1 required, otherwise advice ATC.
 3. CAUTION: This RNAV STARs will only be executed by the ACFT to comply with RNAV (GNSS) RWY 23 Approach.
 4. Descend as cleared.



**DUGLA 1K [DUGL1K], DUGLA 1L [DUGL1L]
 EKSIB 1K [EKSI1K], LEDLO 1K [LEDL1K]
 RNAV ARRIVALS
 (RWY 23)**

LOST COMMS ▼ LOST COMMS ▼ LOST COMMS ▼ LOST COMMS ▼ LOST COMMS ▼

- 1) At or after ERPAT:
Continue approach. Execute the RNAV (GNSS) procedure and land.
- 2) Before ERPAT:
a) At or above 8000':
Follow the flight plan route using last assigned and acknowledged FL/altitude. After passing/passed EKSIB, LEDLO or DUGLA proceed direct to EDR VOR or NDB descending/maintaining 8000'. Leave 8000' at EDR VOR or NDB. Execute Instrument Approach Procedure and land.
- b) ACFT below 8000':
Following the RNAV (GNSS) procedure laterally, climb or maintain 8000'. Then, proceed direct to EDR VOR or NDB. Leave 8000' at EDR VOR or NDB. Execute Instrument Approach Procedure and land.

▲ LOST COMMS ▲ LOST COMMS ▲ LOST COMMS ▲ LOST COMMS ▲ COMMS ▲



EDREMIT
D 109.4 EDR
N39 33.0 E027 00.3
368 EDR
N39 33.0 E027 00.3



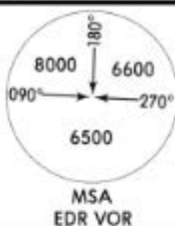
STAR	ROUTING
DUGLA 1K	DUGLA (8500'+) - FD510 - UNLAD (4750') - ERPAT (K180-; 3800').
DUGLA 1L ①	DUGLA (5700'+) - FD510 - UNLAD (4750') - ERPAT (K180-; 3800').
EKSIB 1K	EKSIB (FL110+) - KONEN - UNLAD (4750') - ERPAT (K180-; 3800').
LEDLO 1K	LEDLO (8500'+) - KONEN - UNLAD (4750') - ERPAT (K180-; 3800').

① Used only by missed approach traffic.

ATIS
127.275

Apt Elev
51'

Alt Set: hPa Trans level: By ATC Trans alt: 10000'
 1. RNAV (GNSS).
 2. RNP-1 required, otherwise advise ATC.
 3. CAUTION: ATC will clear ACFT to execute the VOR DME ILS Rwy 05 or NDB DME ILS Rwy 05 final approach procedure at or before PAFSO. 4. Descend as cleared.

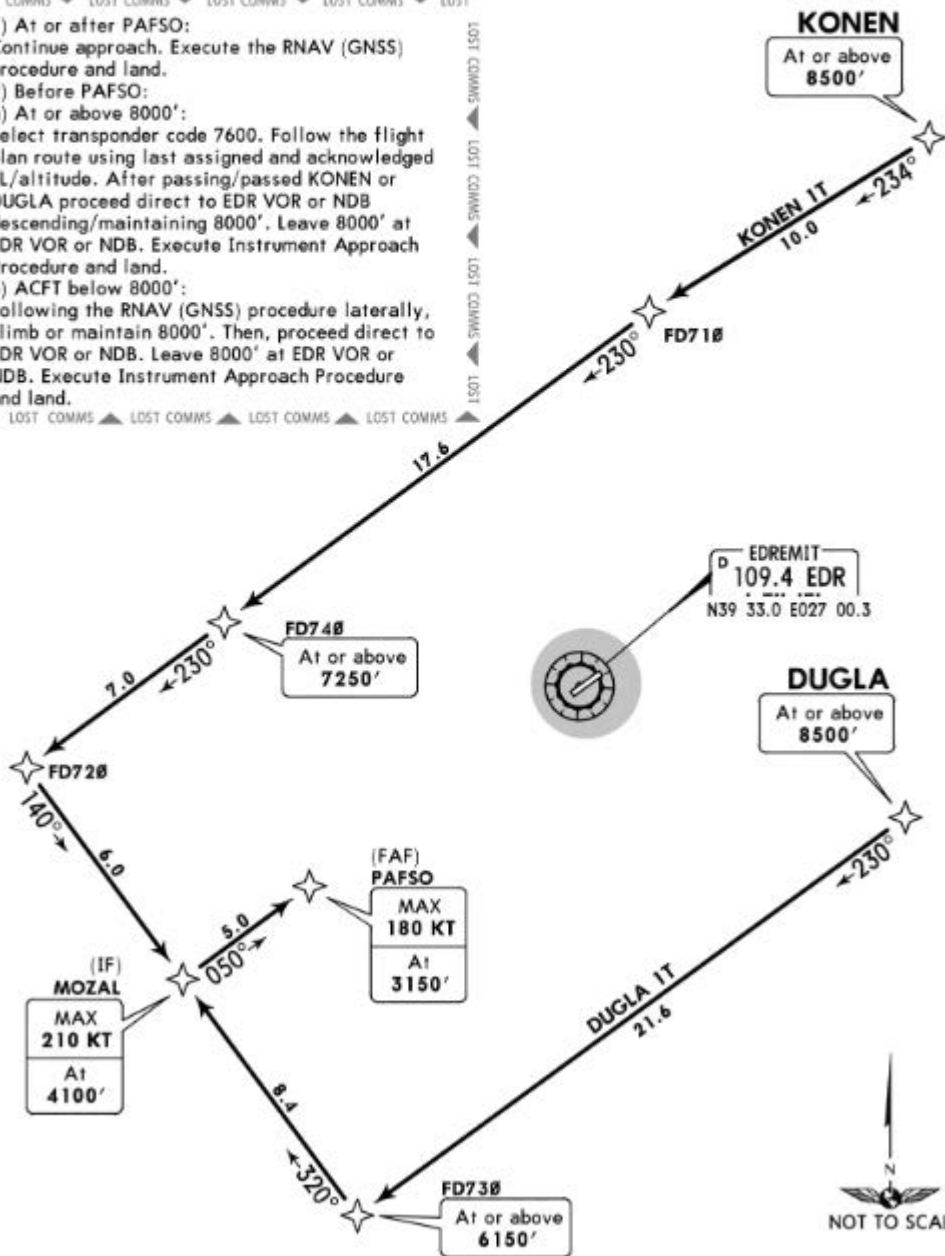


DUGLA 1T [DUGL1T]
 KONEN 1T [KONE1T]
 RNAV ARRIVALS
 (RWY 05)

LOST COMMS ▼ LOST COMMS ▼ LOST COMMS ▼ LOST COMMS ▼ LOST

- 1) At or after PAFSO:
 Continue approach. Execute the RNAV (GNSS) procedure and land.
- 2) Before PAFSO:
 a) At or above 8000':
 Select transponder code 7600. Follow the flight plan route using last assigned and acknowledged FL/altitude. After passing/passed KONEN or DUGLA proceed direct to EDR VOR or NDB descending/maintaining 8000'. Leave 8000' at EDR VOR or NDB. Execute Instrument Approach Procedure and land.
- b) ACFT below 8000':
 Following the RNAV (GNSS) procedure laterally, climb or maintain 8000'. Then, proceed direct to EDR VOR or NDB. Leave 8000' at EDR VOR or NDB. Execute Instrument Approach Procedure and land.

▲ LOST COMMS ▲ LOST COMMS ▲ LOST COMMS ▲ LOST

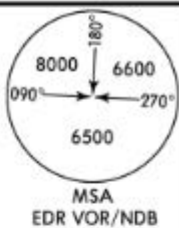


STAR	ROUTING
DUGLA 1T	DUGLA (8500'+) - FD730 (6150'+) - MOZAL (K210-; 4100') - PAFSO (K180-; 3150').
KONEN 1T	KONEN (8500'+) - FD710 - FD740 (7250'+) - FD720 - MOZAL (K210-; 4100') - PAFSO (K180-; 3150').

ATIS
127.275

Apt Elev
51'

Alt Set: hPa Trans level: By ATC Trans alt: 10000'



DUGLA 1D [DUGL1D]
KONEN 1D [KONE1D]
ARRIVALS
(RWYS 05, 23)



KONEN



EDREMIT
D 109.4 EDR
N39 33.0 E027 00.3
368 EDR
N39 33.0 E027 00.3



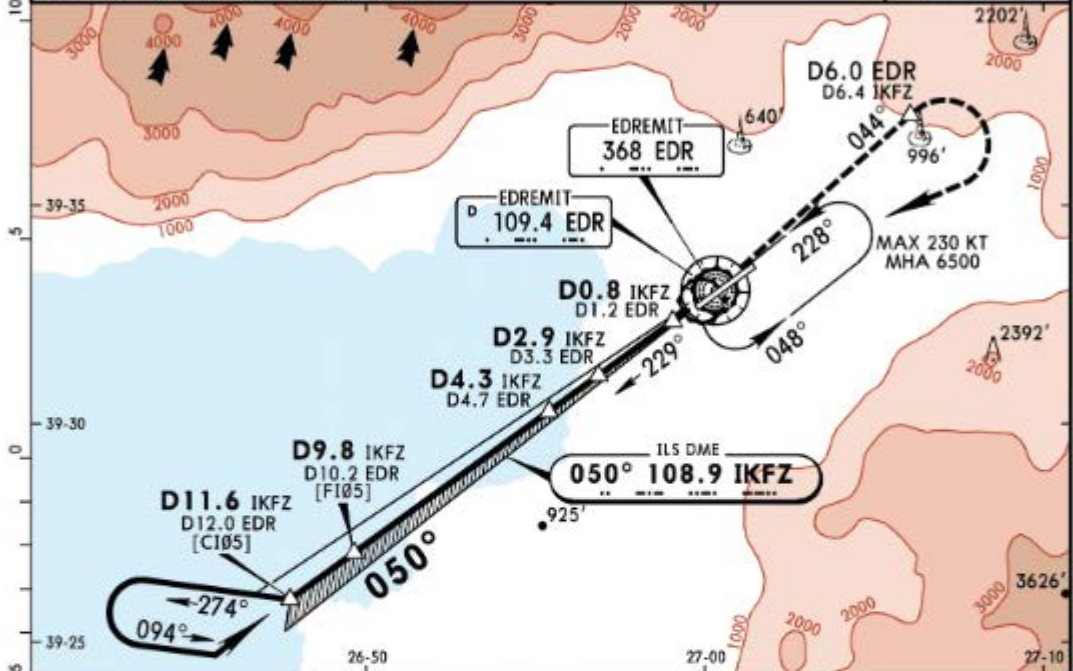
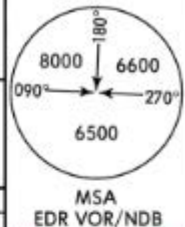
LTFD/EDO

JEPPESEN
10 MAY 19 11-1 Eff 23 May

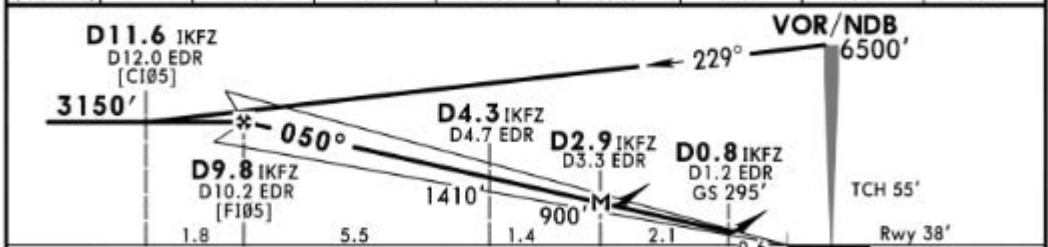
BALIKESIR, TURKEY
VOR DME ILS Rwy 05
or NDB DME ILS Rwy 05

KOCA SEYIT

ATIS 127.275		EDREMIT Tower 119.7 126.85		Ground 121.9	
LOC IKFZ 108.9	Final Apch Crs 050°	GS D9.8 IKFZ 3150' (3112')	ILS DA(H) Refer to Minimums	Apt Elev 51'	Rwy 38'
<p>MISSED APCH: Climb on R-044 EDR (044° from NDB) to D6.0 EDR (D6.4 IKFZ), then climbing turn RIGHT to cross VOR/NDB at 6500' and hold. MAX 185 KT until inbound VOR/NDB. If unable to reach 6500' at VOR/NDB proceed via R-228 EDR (228° from NDB) to 5000', then climbing turn LEFT to cross VOR/NDB at 6500' and hold.</p> <p>Alt Set: hPa Rwy Elev: 1 hPa Trans level: By ATC Trans alt: 10000'</p> <p>Procedure turn restricted to MAX 185 KT.</p>					



LOC	IKFZ DME	9.0	8.0	7.0	6.0	5.0	4.0	3.0
(GS out)	ALTITUDE	2900'	2580'	2260'	1940'	1630'	1310'	990'



Gnd speed-Kts	70	90	100	120	140	160	HALS REIL PAPI Refer to Missed Apch above
ILS GS or LOC Descent Angle	3.00°	372	478	531	637	743	
MAP at D2.9 IKFZ/D3.3 EDR							

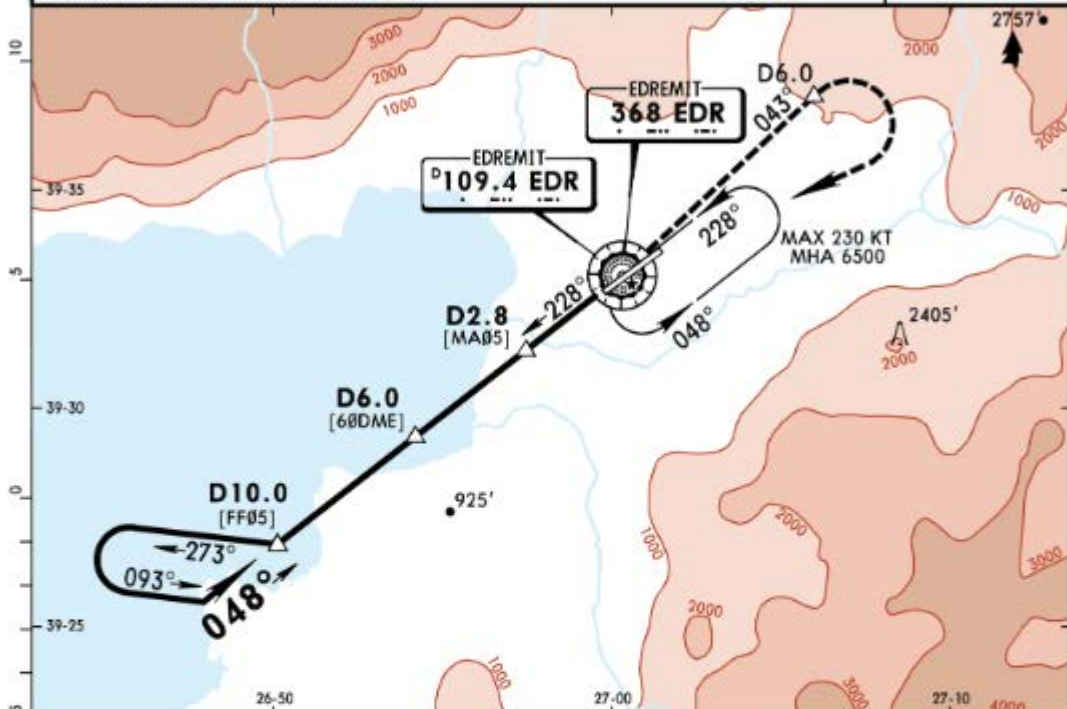
Standard				STRAIGHT-IN LANDING RWY 05			CIRCLE-TO-LAND CAUTION: Not authorized North of airport			
Missed apch climb gradient min 4.5%		Missed apch climb gradient min 2.5%		LOC (GS out) CDFA DA/MDA(H) 900' (862')						
DA(H) 268' (230')		DA(H) 858' (820')		900' (862')						
FULL		ALS out		FULL		ALS out		ALS out		
A			RVR 1500m		RVR 1500m		Max Kts	MDA(H)	VIS	
B	RVR 550m	RVR 1200m	RVR 1500m		RVR 1500m		100	1500' (1449')	1500m	
C			RVR 2400m		RVR 2400m		135	1500' (1449')	1600m	
D			RVR 2400m		RVR 2400m		180	1500' (1449')	2400m	
								205	2700' (2649')	3600m

LTFD/EDO
KOCA SEYIT

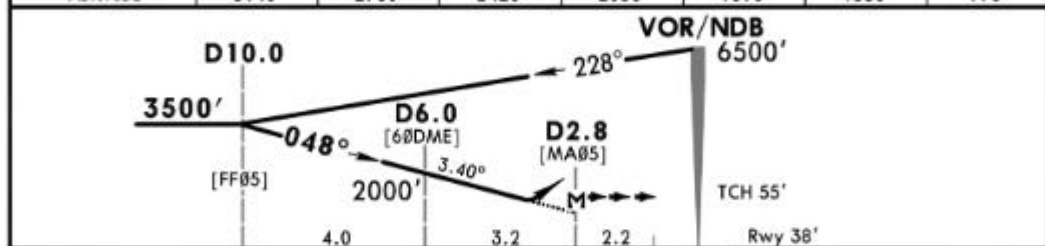
JEPPesen
17 AUG 18 (13-1) VOR DME or NDB DME Rwy 05

BALIKESIR, TURKEY

*ATIS 127.275			*EDREMIT Tower 119.7 126.85		*Ground 121.9
VOR EDR 109.4	NDB EDR 368	Final Apch Crs 048°	Minimum Alt D10.0 3500' (3462')	DA/MDA(H) 900' (862')	Apt Elev 51' Rwy 38'
MISSED APCH: Climb on R-043 (043° from NDB) to D6.0, then climbing turn RIGHT to cross VOR/NDB at 6500' and hold. MAX 185 KT until inbound VOR/NDB. If unable to reach 6500' at VOR/NDB proceed via R-228 (228° from NDB) to 5000', then climbing turn LEFT to cross VOR/NDB at 6500' and hold.					
Alt Set: hPa Rwy Elev: 1 hPa Trans level: By ATC Trans alt: 10000' Procedure turn restricted to MAX 185 KT.					



EDR DME	9.0	8.0	7.0	6.0	5.0	4.0	3.0
ALTITUDE	3140'	2780'	2420'	2050'	1690'	1330'	970'



Gnd speed-Kts	70	90	100	120	140	160		Refer to Missed Apch above
Descent Angle 3.40°	421	541	602	722	842	963		
MAP at D2.8								

Standard STRAIGHT-IN LANDING RWY 05				CIRCLE-TO-LAND			
CDFA DA/MDA(H) 900' (862')				CAUTION: Not authorized North of airport			
ALS out				Max Kts	MDA(H)	VTS	
A	RVR 1500m			100	1500' (1449')	1500m	
B	RVR 1500m			135	1500' (1449')	1600m	
C	RVR 2400m			180	1500' (1449')	2400m	
D	RVR 2400m			205	2700' (2649')	3600m	

CHANGES: ATIS.

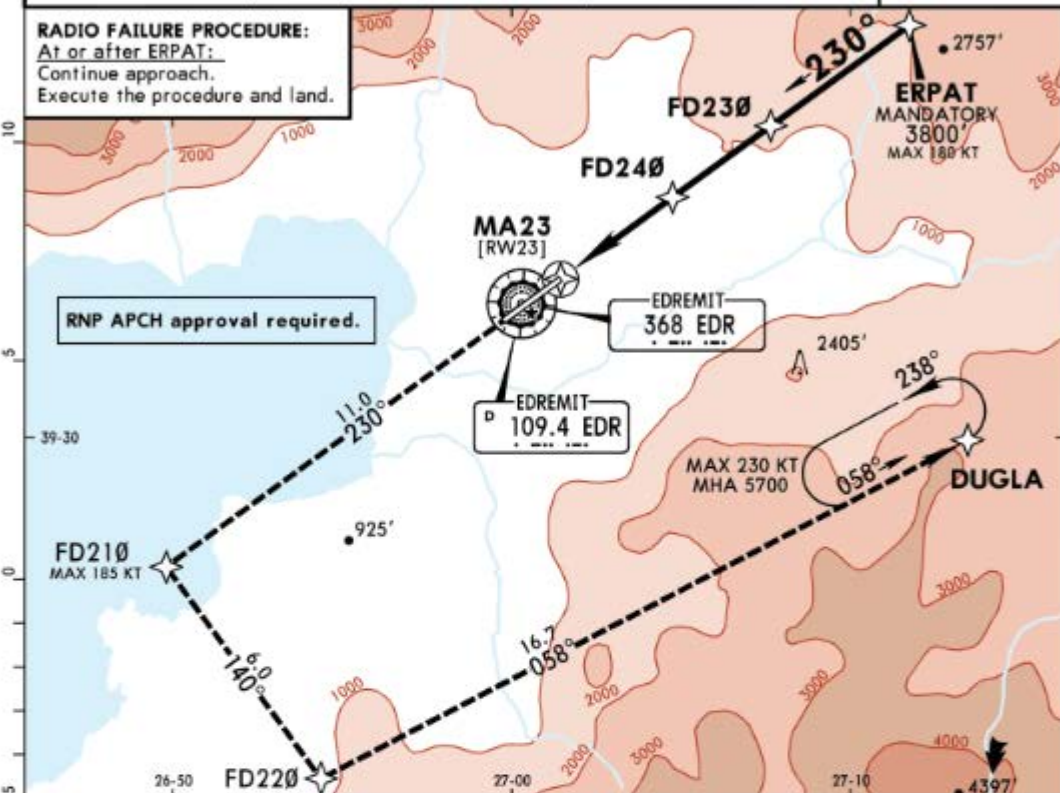
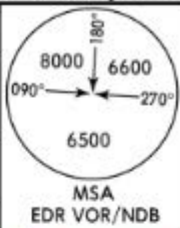
© JEPPESEN, 1999, 2018. ALL RIGHTS RESERVED.

LTFD/EDO
KOCA SEYIT

JEPPESEN
17 AUG 18 (12-1)

BALIKESIR, TURKEY
RNAV (GNSS) Rwy 23

*ATIS 127.275		*EDREMIT Tower 119.7 126.85		*Ground 121.9
RNAV	Final Apch Crs 230°	Mandatory Alt ERPAT 3800' (3753')	LNAV DA/MDA(H) 750' (703')	Apt Elev 51' Rwy 47'
MISSED APCH: Climb to 8500' to FD210 (MAX 185 KT), then turn LEFT to FD220, turn LEFT to DUGLA at or above 5700' and hold.				
Alt Set: hPa		Rwy Elev: 2 hPa		Trans level: By ATC
				Trans alt: 10000'



DIST to THR	2.0	3.0	4.0	5.0	6.0	7.0	8.0	9.0	10.0
ALTITUDE	832'	1203'	1574'	1945'	2316'	2687'	3058'	3429'	3800'



Gnd speed-Kts	70	90	100	120	140	160	HIALS REIL PAPI	8500'	FD210	185 KT MAX
Descent Angle 3.50°	434	557	619	743	867	991				

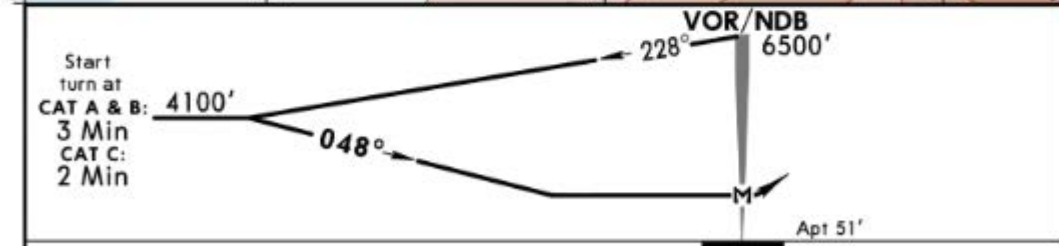
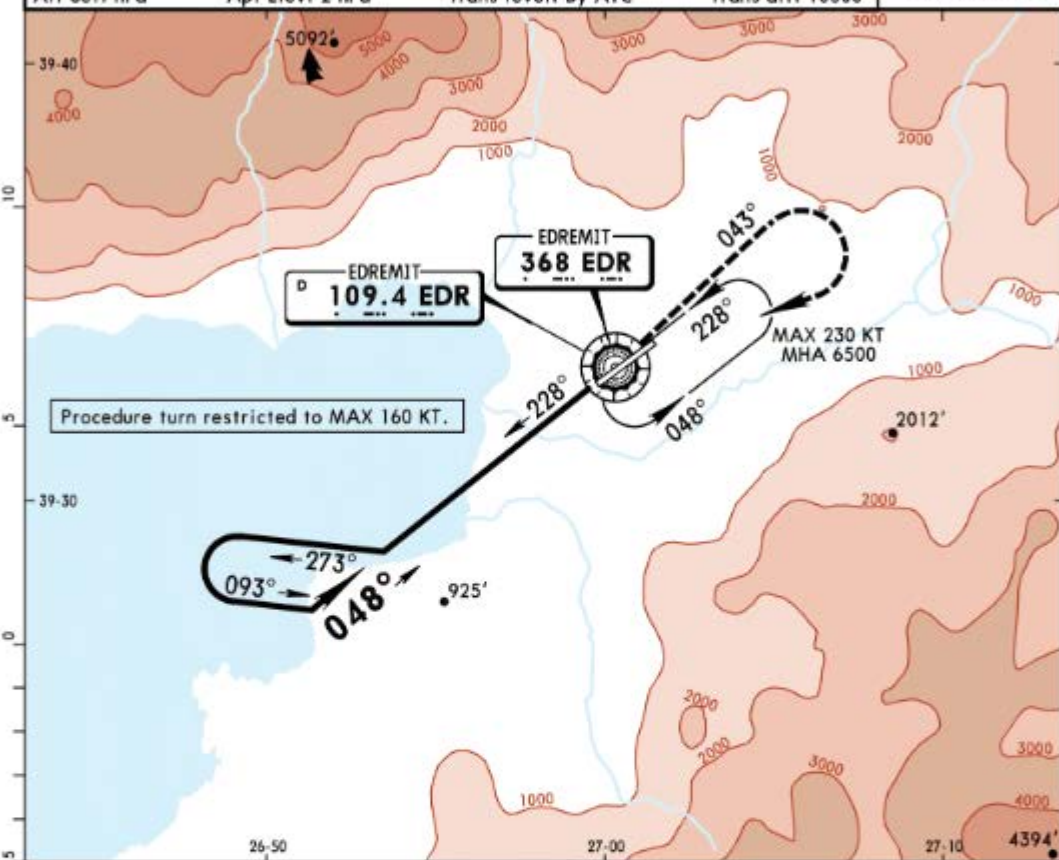
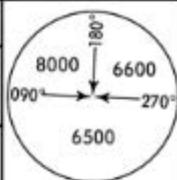
MAP at RW23 Standard		STRAIGHT-IN LANDING RWY 23		CIRCLE-TO-LAND CAUTION: Not authorized North of airport	
		LNAV CDFA DA/MDA(H) 750' (703')			
		ALS out			
A		RVR 1500m		Max Kts 100	MDA(H) 1500'
B				135	1500' (1449')
C		RVR 2400m		180	1500' (1449')
D				205	2700' (2649')
					VIS 3600m

LTFD/EDO
KOCA SEYIT

JEPPESEN
17 AUG 18 (13-2) CAT A, B & C

BALIKESIR, TURKEY
VOR-1 or NDB-1

*ATIS 127.275		*EDREMIT Tower 119.7 126.85		*Ground 121.9	
VOR EDR 109.4	NDB EDR 368	Final Apch Crs 048°	No FAF	MDA(H) 1500' (1449')	Apt Elev 51'
<p>MISSED APCH: Climb on R-043 (043° from NDB) to 2400', then climbing turn RIGHT to 6500' to VOR/NDB and hold. MAX 185 KT until inbound VOR/NDB. If unable to reach 6500' at VOR/NDB proceed via R-228 (228° from NDB) to 5000', then climbing turn LEFT to cross VOR/NDB at 6500' and hold.</p>					
Alt Set: hPa		Apt Elev: 2 hPa		Trans level: By ATC	
				Trans alt: 10000'	



MAP at VOR/NDB						Lighting - Refer to Airport Chart	Refer to Missed Apch above
----------------	--	--	--	--	--	-----------------------------------	----------------------------

Standard CIRCLE-TO-LAND

CAUTION: Not authorized North of airport

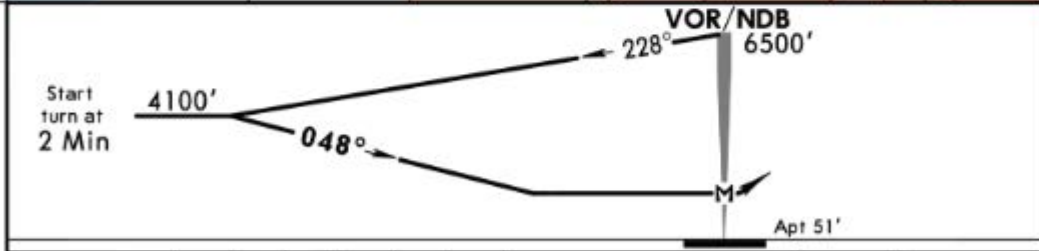
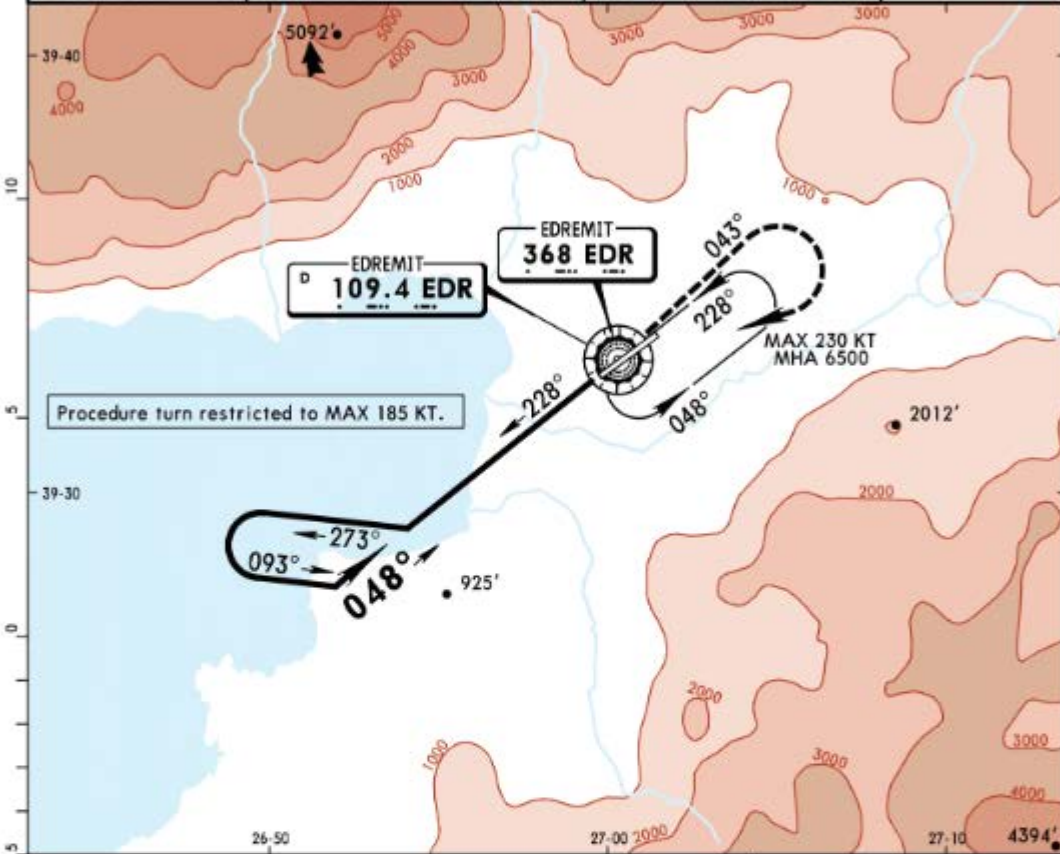
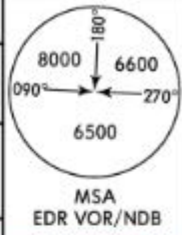
	Max Kts	MDA(H)	VIS
A	100	1500' (1449')	1500m
B	135	1500' (1449')	1600m
C	180	1500' (1449')	2400m
D	D	NOT APPLICABLE	

LTFD/EDO
KOCA SEYIT

JEPPESEN
17 AUG 18 (13-3) CAT D

BALIKESIR, TURKEY
VOR-2 or NDB-2

*ATIS 127.275		*EDREMIT Tower 119.7 126.85		*Ground 121.9	
VOR EDR 109.4	NDB EDR 368	Final Apch Crs 048°	No FAF	MDA(H) 2700' (2649')	Appt Elev 51'
MISSED APCH: Climb on R-043 (043° from NDB) to 3500', then climbing turn RIGHT to 6500' to VOR/NDB and hold. MAX 185 KT until inbound VOR/NDB. If unable to reach 6500' at VOR/NDB proceed via R-228 (228° from NDB) to 5500', then climbing turn LEFT to cross VOR/NDB at 6500' and hold.					
Alt Set: hPa		Appt Elev: 2 hPa		Trans level: By ATC	
				Trans alt: 10000'	



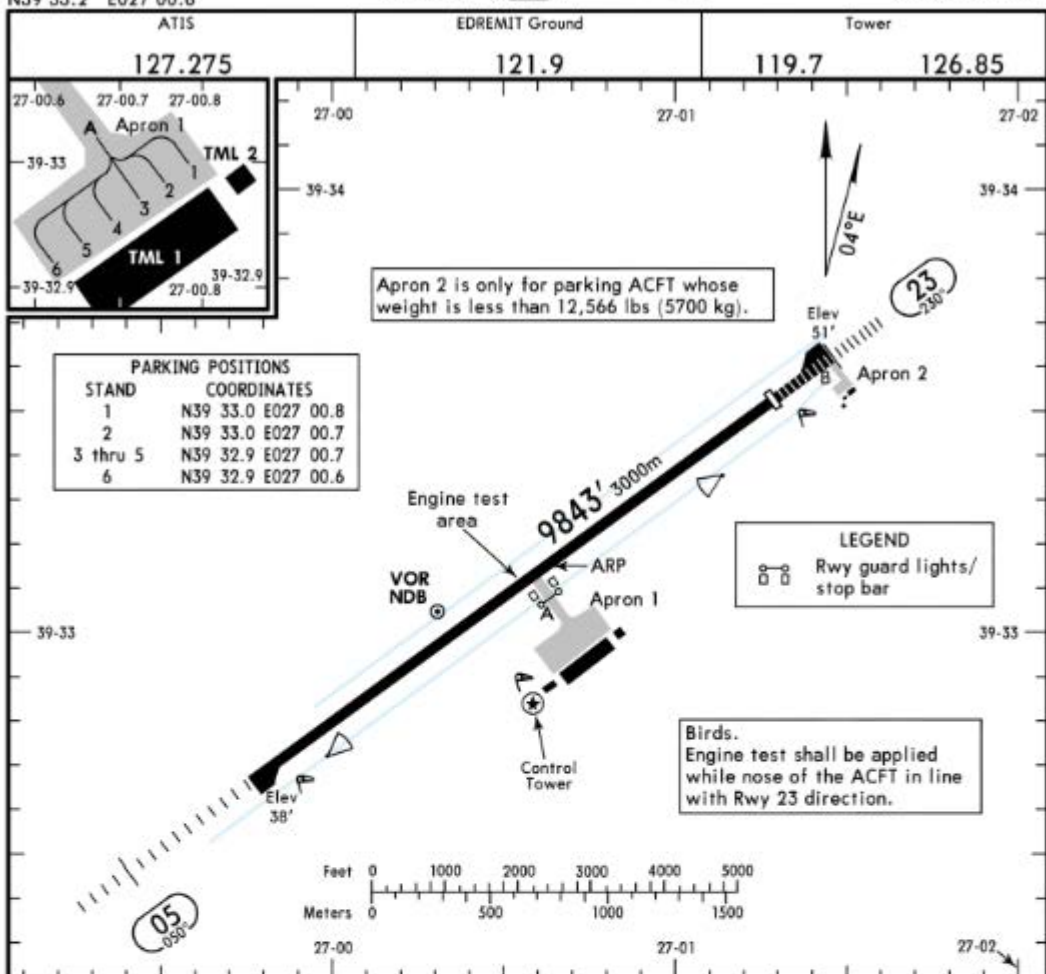
MAP at VOR/NDB								Lighting - Refer to Airport Chart	Refer to Missed Apch above
----------------	--	--	--	--	--	--	--	-----------------------------------	----------------------------

Standard		CIRCLE-TO-LAND	
CAUTION: Not authorized North of airport			
	Max Kts	MDA(H)	VIS
A	A		
B	B		
C	C		
D	205	2700' (2649')	3600m

PAINS OPS

CHANGES: ATIS.

© JEPPESEN, 2010, 2018. ALL RIGHTS RESERVED.



ADDITIONAL RUNWAY INFORMATION

RWY	USABLE LENGTHS				TAKE-OFF	WIDTH	
	HIRL (60m)	HIALS	SFL REIL	PAPI-L (angle 3.0°)			Threshold
05	HIRL (60m)	HIALS	SFL REIL	PAPI-L (angle 3.0°)	RVR	8749' 2667m	148' 45m
23	HIRL (60m)	HIALS	REIL	PAPI-L (angle 3.0°)	RVR	8859' 2700m	

1 TAKE-OFF RUN AVAILABLE

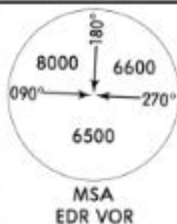
RWY 05:	RWY 23:
From rwy head	From rwy head
twy A int	twy A int
9842' (3000m)	9842' (3000m)
5249' (1600m)	4593' (1400m)

Standard TAKE-OFF

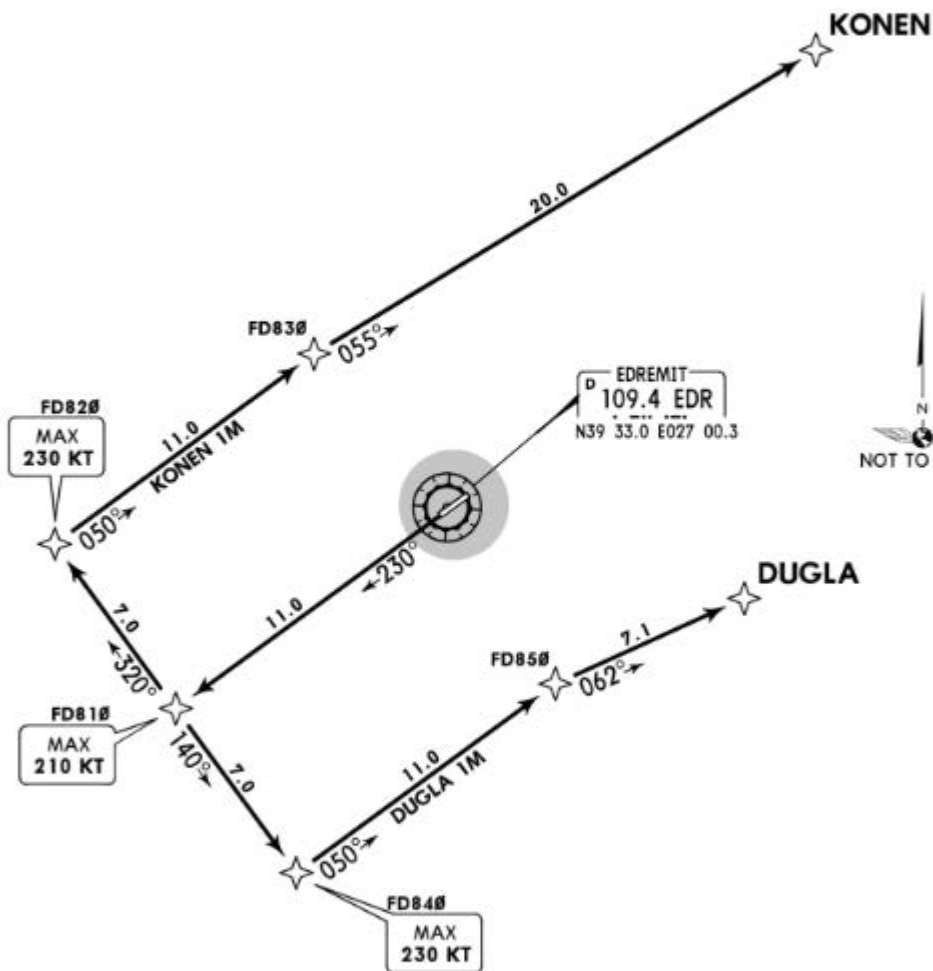
Category	Day: RL or RCLM Night: RL	Adequate vis ref (Day only)
A	Low Visibility Take-off	
B	Day: RL & RCLM Night: RL	
C	RVR 300m	400m
D		500m

Apt Elev
51'

Trans level: By ATC Trans alt: 10000'
1. RNAV (GNSS).
2. RNP-1 required, otherwise advice ATC.



DUGLA 1M [DUGL1M]
KONEN 1M [KONE1M]
RNAV DEPARTURES
(RWY 23)



These SIDs require a minimum climb gradient of

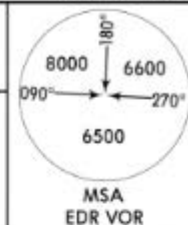
DUGLA 1M: 231' per NM (3.8%) up to 6500',
KONEN 1M: 231' per NM (3.8%) up to 4500'.

Gnd speed-KT	75	100	150	200	250	300
231' per NM	289	385	578	770	963	1155

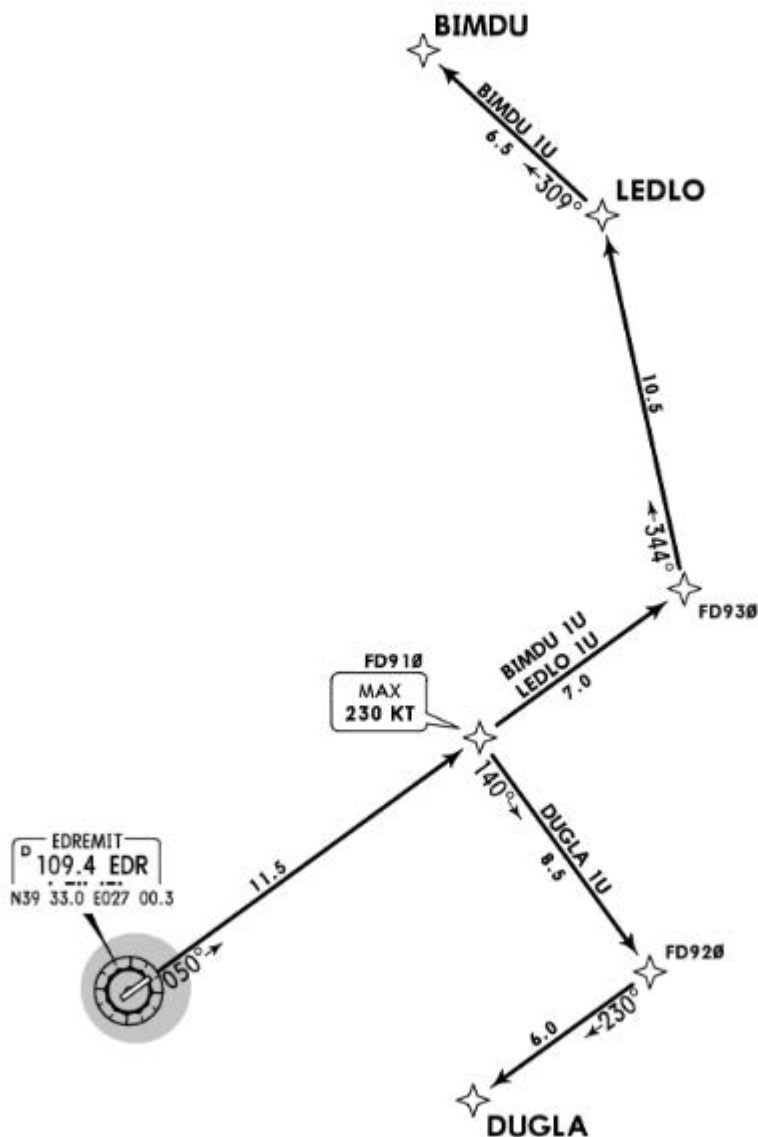
SID	ROUTING
DUGLA 1M	Climb on 230° track to FD810, turn LEFT to FD840, turn LEFT to FD850, turn RIGHT to DUGLA.
KONEN 1M	Climb on 230° track to FD810, turn RIGHT to FD820, turn RIGHT to FD830, turn RIGHT to KONEN.

Apt Elev
51'

Trans level: By ATC Trans alt: 10000'
1. RNAV (GNSS).
2. RNP-1 required, otherwise advice ATC.



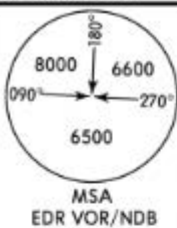
BIMDU 1U [BIMD1U]
DUGLA 1U [DUGL1U]
LEDLO 1U [LEDL1U]
RNAV DEPARTURES
(RWY 05)



These SIDs require a minimum climb gradient of 365' per NM (6.0%) up to 8500'.

Gnd speed-KT	75	100	150	200	250	300
365' per NM	456	608	913	1217	1521	1825

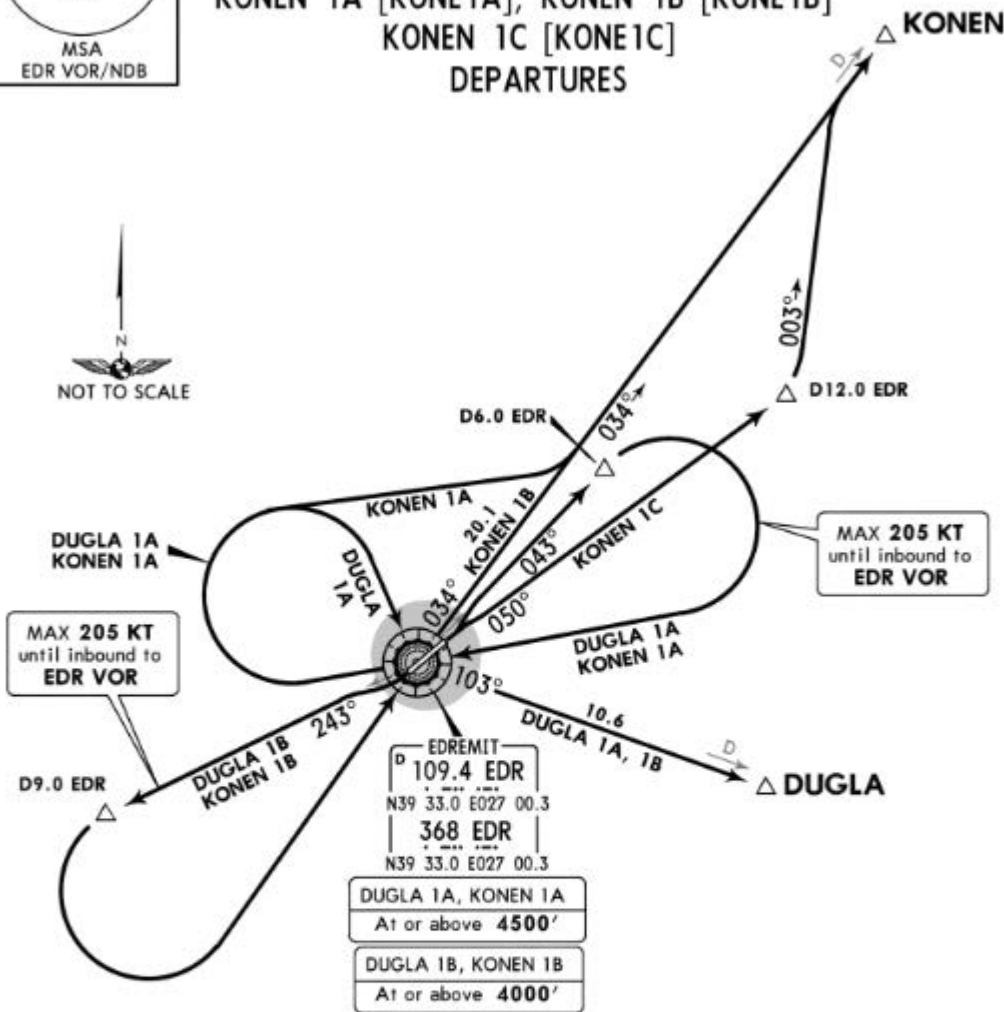
SID	ROUTING
BIMDU 1U	To FD910 on 050° track, to FD930, turn LEFT to LEDLO, turn LEFT to BIMDU.
DUGLA 1U	To FD910 on 050° track, turn RIGHT to FD920, turn RIGHT to DUGLA.
LEDLO 1U	To FD910 on 050° track, to FD930, turn LEFT to LEDLO.



Apt Elev
51'

Trans level: By ATC Trans alt: 10000'

DUGLA 1A [DUGL1A], DUGLA 1B [DUGL1B]
KONEN 1A [KONE1A], KONEN 1B [KONE1B]
KONEN 1C [KONE1C]
DEPARTURES



These SIDs require minimum climb gradients of

- DUGLA 1A, KONEN 1A:
346' per NM (5.7%) until crossing 4500'.
- KONEN 1C:
365' per NM (6.0%) until crossing 5000'.

Gnd speed-KT	75	100	150	200	250	300
346' per NM	433	577	865	1153	1442	1730
365' per NM	456	608	913	1217	1521	1825

SID	RWY	ROUTING
DUGLA 1A	05	Climb on EDR R043 (043° bearing from EDR NDB) to D6.0 EDR, turn RIGHT to EDR VOR, turn RIGHT, intercept EDR R103 (103° bearing from EDR NDB) to DUGLA, then join airway.
DUGLA 1B	23	Climb on EDR R243 (243° bearing from EDR NDB) to D9.0 EDR, turn LEFT to EDR VOR, turn RIGHT, EDR R103 (103° bearing from EDR NDB) to DUGLA, then join airway.
KONEN 1A	05	Climb on EDR R043 (043° bearing from EDR NDB) to D6.0 EDR, turn RIGHT to EDR VOR, turn RIGHT, intercept EDR R034 (034° bearing from EDR NDB) to KONEN, then join airway.
KONEN 1B	23	Climb on EDR R243 (243° bearing from EDR NDB) to D9.0 EDR, turn LEFT to EDR VOR, EDR R034 (034° bearing from EDR NDB) to KONEN, then join airway.
KONEN 1C	05	Climb on EDR R050 (050° bearing from EDR NDB) to D12.0 EDR, turn LEFT, 003° track, intercept EDR R034 (034° bearing from EDR NDB) to KONEN, then join airway.