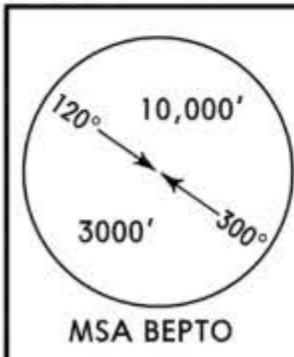
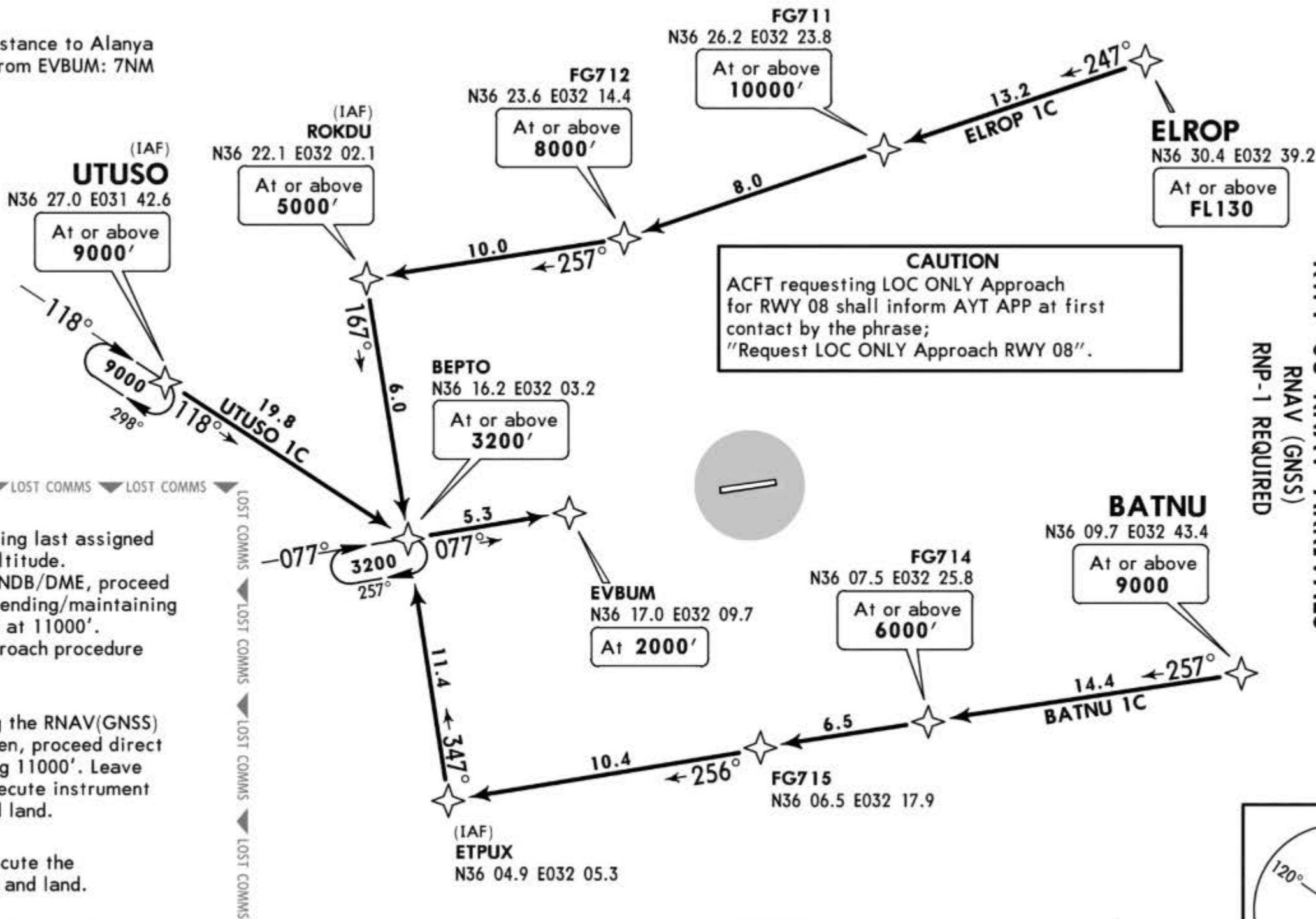


ATIS  
120.950

Apt Elev  
126'

Alt Set: hPa Trans level: By ATC Trans alt: 15000'

**BATNU 1C [BATN1C]  
ELROP 1C [ELRO1C], UTUSO 1C [UTUS1C]  
RWY 08 RNAV ARRIVALS**  
RNAV (GNSS)  
RNP-1 REQUIRED



Direct distance to Alanya airport from EVBUM: 7NM



LOST COMMS ▼ LOST COMMS ▼ LOST COMMS ▼ LOST COMMS ▼

**At or above 11000':**  
Follow the FPL route using last assigned and acknowledged FL/altitude. Within 25 DME of GZP NDB/DME, proceed direct to GZP NDB descending/maintaining 11000'. Leave GZP NDB at 11000'. Execute instrument approach procedure and land.

**Below 11000':**  
Climb 11000' following the RNAV(GNSS) procedure laterally. Then, proceed direct to GZP NDB maintaining 11000'. Leave GZP NDB at 11000'. Execute instrument approach procedure and land.

**At or after BEPTO:**  
Continue approach. Execute the RNAV(GNSS) procedure and land.

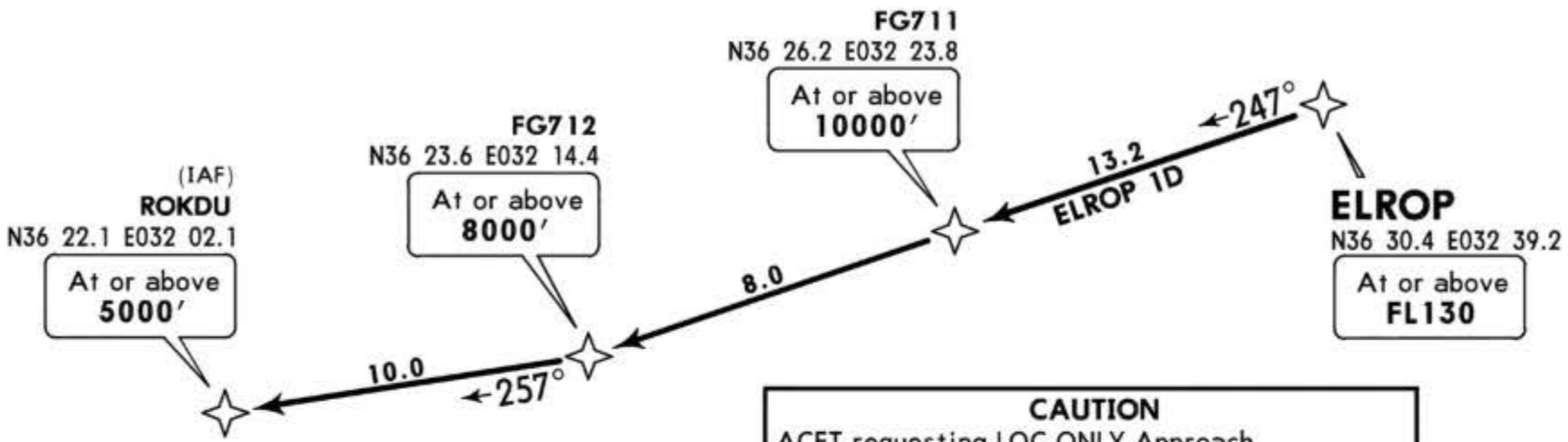
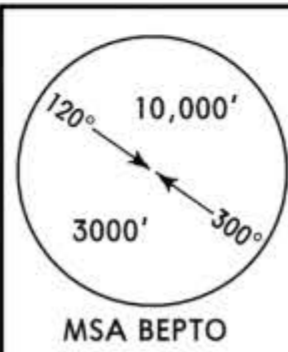
STAR	ROUTING
BATNU 1C	BATNU (9000'+) - FG714 (6000'+) - FG715 - ETPUX - BEPTO (3200'+) - EVBUM (2000').
ELROP 1C	ELROP (FL130+) - FG711 (10000'+) - FG712 (8000'+) - ROKDU (5000'+) - BEPTO (3200'+) - EVBUM (2000').
UTUSO 1C	UTUSO (9000'+) - BEPTO (3200'+) - EVBUM (2000').

ATIS  
120.950

Apt Elev  
126'

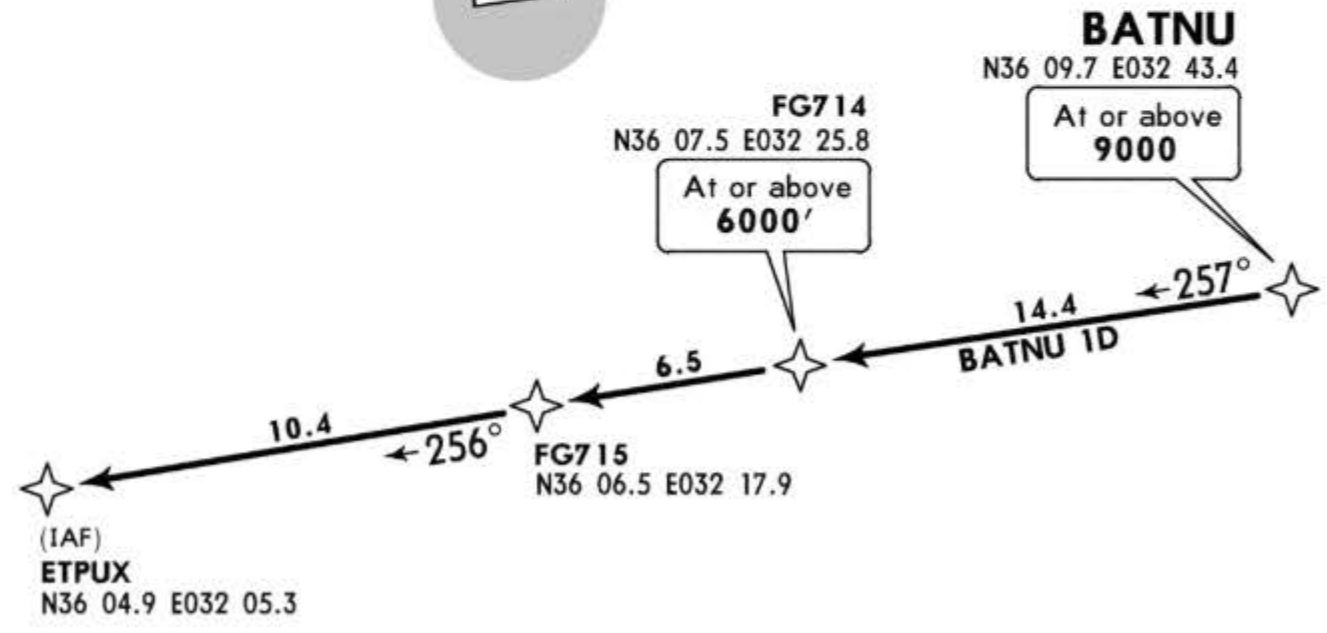
Alt Set: hPa Trans level: By ATC Trans alt: 15000'

**BATNU 1D [BATN1D]  
ELROP 1D [ELRO1D]  
RWY 08 RNAV ARRIVALS**  
RNAV (GNSS)  
RNP-1 REQUIRED



**CAUTION**  
ACFT requesting LOC ONLY Approach for RWY 08 shall inform AYT APP at first contact by the phrase;  
"Request LOC ONLY Approach RWY 08".

Direct distance to Alanya airport from:  
EPTOX 17NM  
ROKDU 14NM



LOST COMMS ▼ LOST COMMS ▼ LOST COMMS ▼ LOST COMMS ▼

**At or above 11000':**  
Follow the FPL route using last assigned and acknowledged FL/altitude. Within 25 DME of GZP NDB/DME, proceed direct to GZP NDB descending/maintaining 11000'. Leave GZP NDB at 11000'. Execute instrument approach procedure and land.

**Below 11000':**  
Climb 11000' following the RNAV(GNSS) procedure laterally. Then, proceed direct to GZP NDB maintaining 11000'. Leave GZP NDB at 11000'. Execute instrument approach procedure and land.

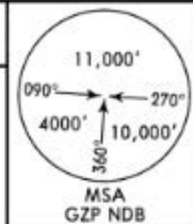
**At or after BEPTO:**  
Continue approach. Execute the RNAV(GNSS) procedure and land.

STAR	ROUTING
BATNU 1D	BATNU (9000'+) - FG714 (6000'+) - FG715 - ETPUX.
ELROP 1D	ELROP (FL130+) - FG711 (10000'+) - FG 712 (8000'+) - ROKDU (5000'+).

ATIS  
120.950

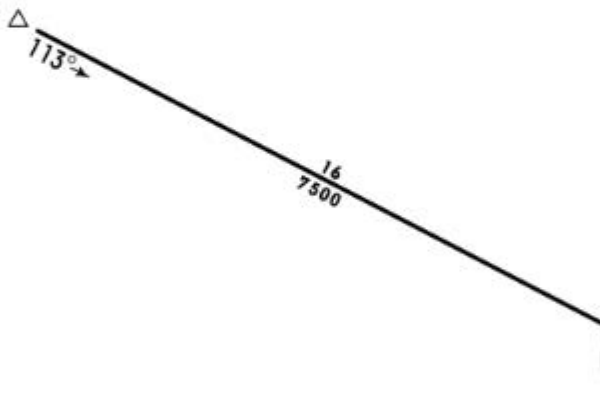
Apt Elev  
126'

Alt Set: hPa  
Trans level: By ATC Trans alt: 15000'



**EVKOR 1B [EVKO1B]  
ARRIVAL**

**EVKOR**  
D16.2 GZP  
N36 25.7 E032 00.0



GAZIPASA  
D (H) (114.2) GZP  
N36 18.3 E032 17.8  
316 GZP  
N36 18.3 E032 17.8



**HOLDING OVER  
GZP**

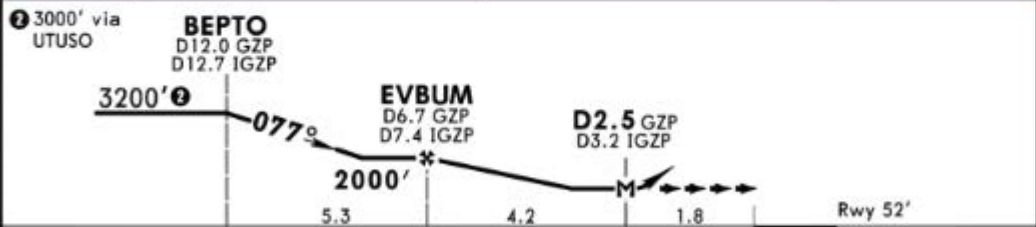
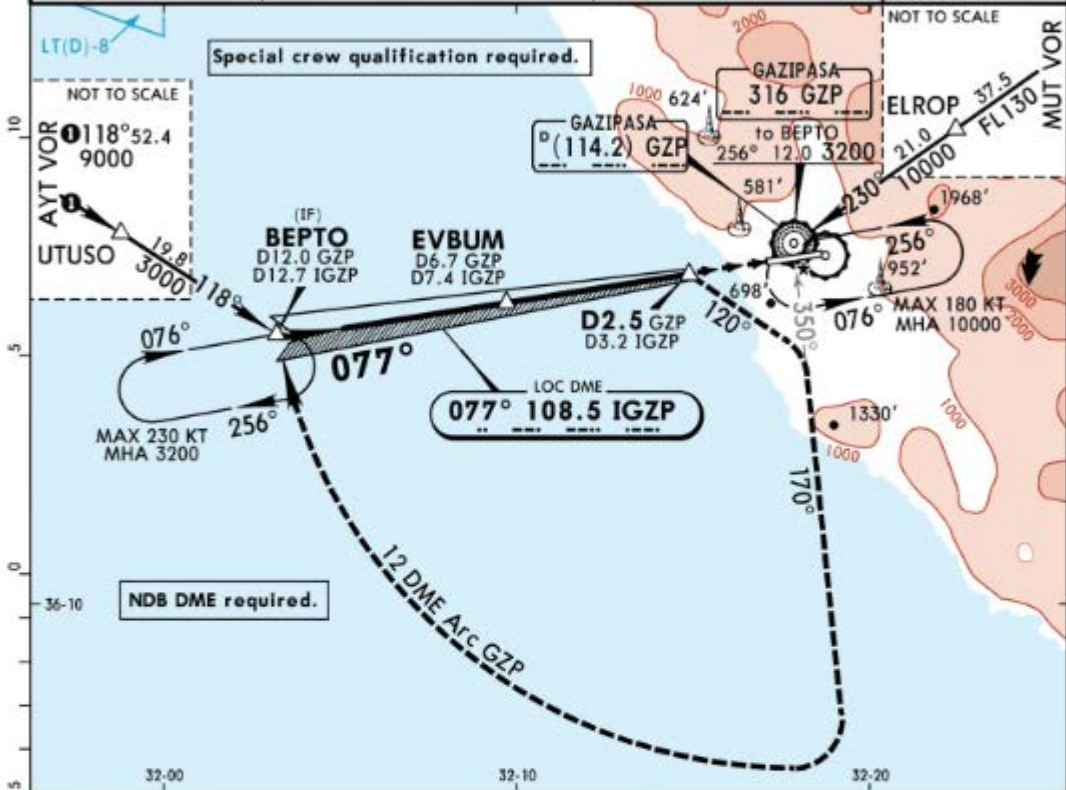


LTFG/GZP  
ALANYA

JEPPESEN  
25 JAN 19 (11-1) Eff 31 Jan

GAZIPASA, TURKEY  
LOC Rwy 08

ATIS 120.950	ANTALYA Approach 120.225 126.025		GAZIPASA Tower 119.250 122.8		Ground 121.8
LOC IGZP <b>108.5</b>	Final Apch Crs <b>077°</b>	Minimum Alt <b>EVBUM</b> 2000' (1948')	MDA(H) Refer to Minimums	Apt Elev 126' Rwy 52'	
<b>MISSED APCH: Turn RIGHT on 120° to intercept 170° from NDB. Turn RIGHT and proceed along 12 DME Arc GZP and hold at BEPTO at 3200'. MAX 185 KT until intercepting 170° from NDB.</b>					
Alt Set: hPa	Rwy Elev: 2 hPa	Trans level: By ATC	Trans alt: 15000'	MSA GZP NDB	



MAP at D2.5 GZP/D3.2 IGZP	ALS	MAX 185 KT	120°	170° from GZP
	PAPI REIL		RT	316

STRAIGHT-IN LANDING RWY 08		CIRCLE-TO-LAND	
Missed apch climb grad mim 3.7% non-CDFA		CAUTION: Not authorized North of airport	
MDA(H) 1000' (948')		MDA(H) 1200' (1148')	
ALS out		ALS out	
A	RVR 4100m	RVR 4500m	Max Kts
B	RVR 4300m	RVR 4700m	100
C	RVR 4300m	RVR 4700m	135
D	RVR 4300m	RVR 4700m	180
			205
			205

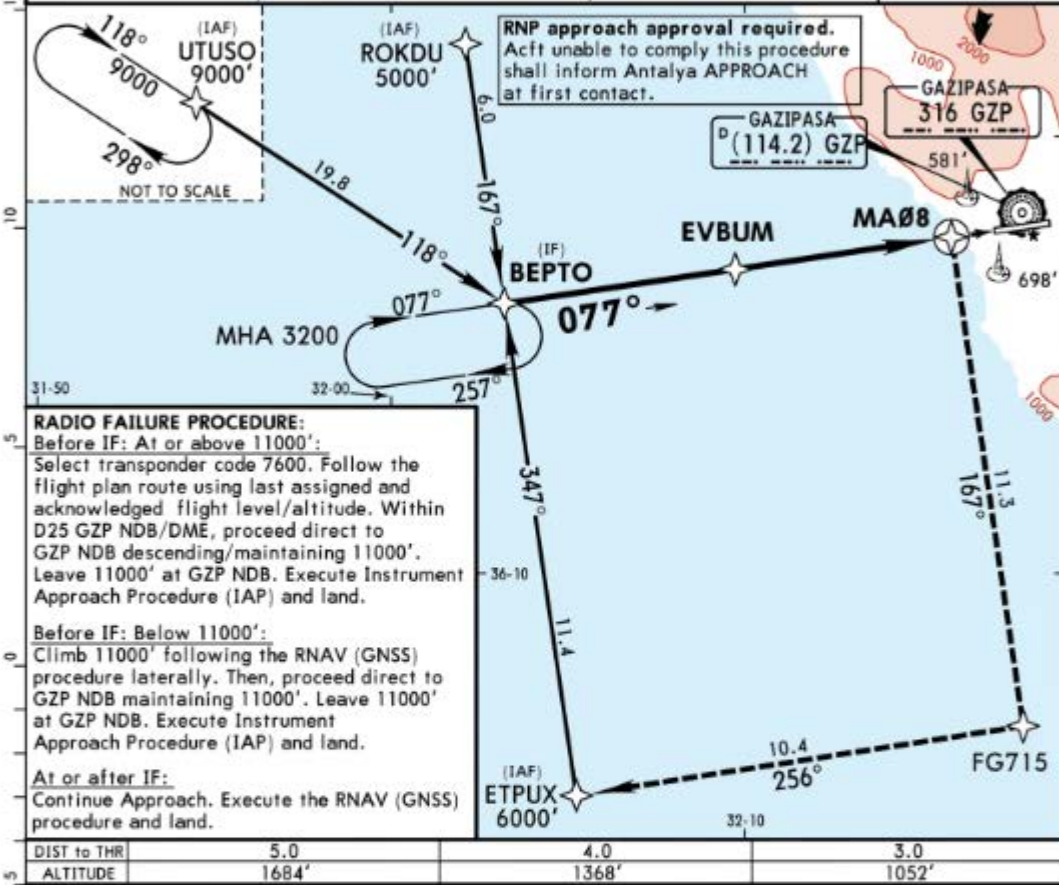
or higher straight-in minimums.

**LTFG/GZP**  
**ALANYA**

**JEPPESEN**  
23 MAR 18 **(12-1)** Eff 29 Mar

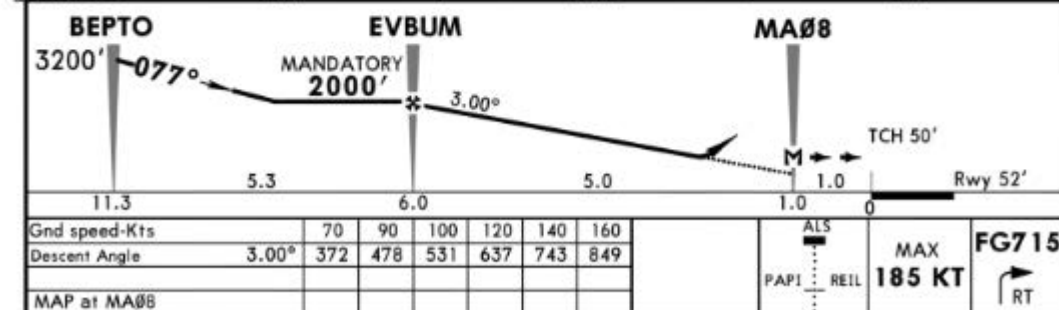
**GAZIPASA, TURKEY**  
**RNAV (GNSS) Rwy 08**

*ATIS 120.950	ANTALYA Approach 120.225 126.025		*GAZIPASA Tower 119.250 122.8		*Ground 121.8
RNAV	Final Aptch Crs <b>077°</b>	Mandatory Alt <b>EVBUM</b> 2000' (1948')	LNAV MDA(H) Refer to Minimums	Apt Elev 126' Rwy 52'	<p>MSA BEPTO</p>
<b>MISSED APCH: Climb to 3200'. From MAØ8 turn RIGHT to FG715, then turn RIGHT to ETPUX, then turn RIGHT to BEPTO and hold. MAX 185 KT at MAØ8.</b>					
Alt Set: hPa	Rwy Elev: 2 hPa	Trans level: By ATC	Trans alt: 15000'		



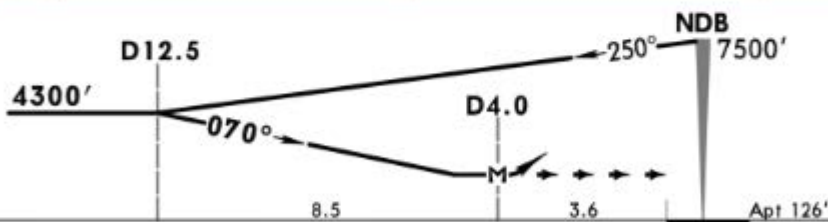
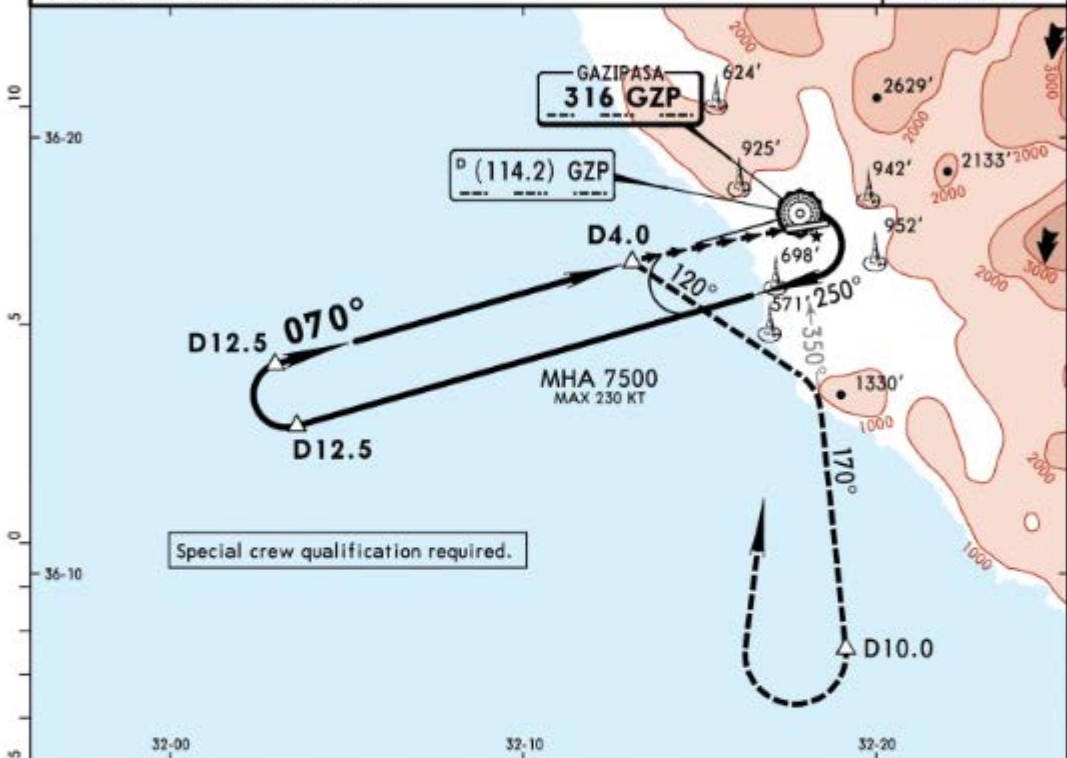
**RADIO FAILURE PROCEDURE:**  
**Before IF: At or above 11000':**  
 Select transponder code 7600. Follow the flight plan route using last assigned and acknowledged flight level/altitude. Within D25 GZP NDB/DME, proceed direct to GZP NDB descending/maintaining 11000'. Leave 11000' at GZP NDB. Execute Instrument Approach Procedure (IAP) and land.  
**Before IF: Below 11000':**  
 Climb 11000' following the RNAV (GNSS) procedure laterally. Then, proceed direct to GZP NDB maintaining 11000'. Leave 11000' at GZP NDB. Execute Instrument Approach Procedure (IAP) and land.  
**At or after IF:**  
 Continue Approach. Execute the RNAV (GNSS) procedure and land.

DIST to THR	5.0	4.0	3.0
ALTITUDE	1684'	1368'	1052'



Gnd speed-Kts	70	90	100	120	140	160	ALS PAPI REIL	MAX <b>185 KT</b>	FG715 RT
	Descent Angle	3.00°	372	478	531	637			
MAP at MAØ8									
<b>Standard</b>							CIRCLE-TO-LAND		
Missed apch climb grad mim 4% CDFA MDA(H) <b>1000'</b> (948')				Missed apch climb grad mim 2.5% CDFA MDA(H) <b>1200'</b> (1148')			CAUTION: Not authorized North of airport		
ALS out				ALS out			Max Kts	MDA(H)	VIS
A	RVR 1500m			RVR 1500m			100	2000' (1874')	1500m
B	RVR 1500m			RVR 1500m			135	2400' (2274')	1600m
C	RVR 2400m			RVR 2400m			180	2900' (2774')	2400m
D	RVR 2400m			RVR 2400m			205	4000' (3874')	3600m

BRIEFING STRIP	*ATIS	ANTALYA Approach		*GAZIPASA Tower		*Ground
	120.950	120.225	126.025	119.25	122.8	121.8
NDB GZP <b>316</b>	Final Apch Crs <b>070°</b>	Minimum Alt D12.5 <b>4300'</b> (4174')	MDA(H) Refer to Minimums	Apt Elev 126'		
<b>MISSED APCH:</b> Turn <b>RIGHT</b> on 120° to intercept 170° from NDB. At D10.0 turn <b>RIGHT</b> to cross NDB at 7500' and hold. MAX 185 KT until inbound NDB. If unable to reach 7500' at NDB, intercept 360° from NDB to cross 6100', then climbing turn <b>LEFT</b> to cross NDB at 7500' and hold.						
Alt Set: hPa		Apt Elev: 5 hPa		Trans level: By ATC		Trans alt: 15000'
Race-track restricted to MAX 185 KT.						

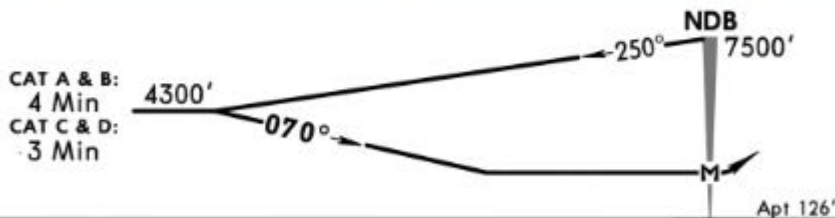
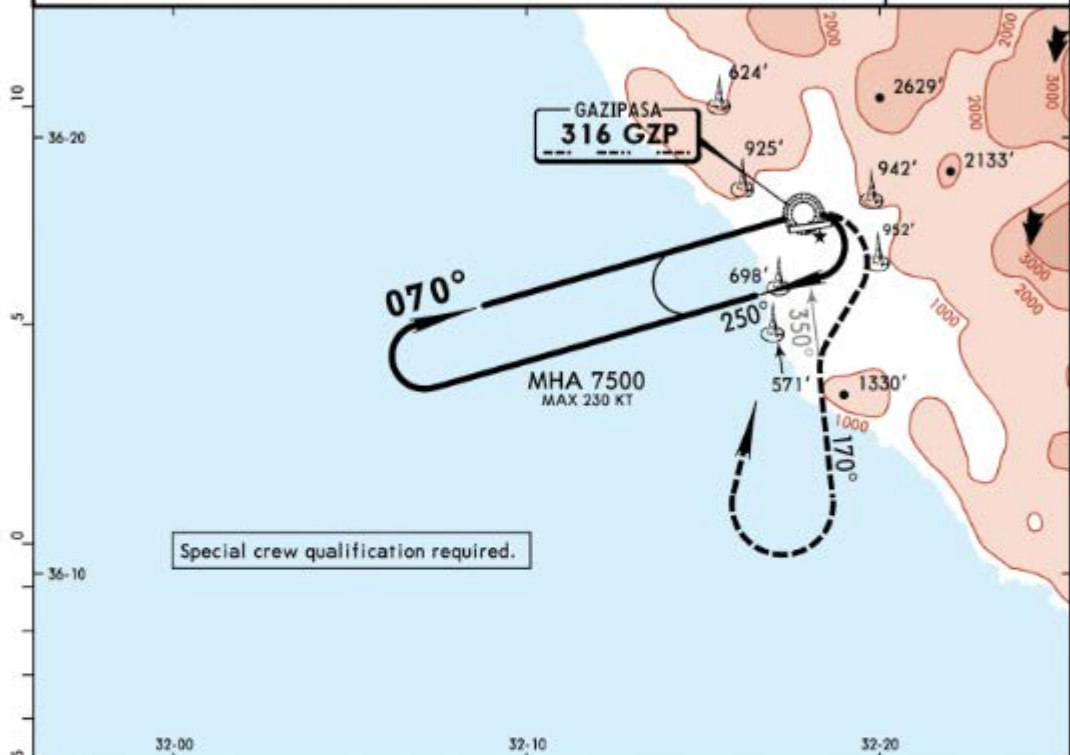


MAP at D4.0						Lighting - Refer to Airport Chart	120° RT	170° from GZP 316
-------------	--	--	--	--	--	-----------------------------------	------------	-------------------------

<b>Standard</b>				CIRCLE-TO-LAND	
CAUTION: Not authorized North of airport					
	Max Kts	MDA(H)	VIS		
A	100	<b>2000'</b> (1874')	1500m		
B	135	<b>2400'</b> (2274')	1600m		
C	180	<b>2900'</b> (2774')	2400m		
D	205	<b>4000'</b> (3874')	3600m		

PANS OPS

*ATIS 120.950	ANTALYA Approach 120.225 126.025		*GAZIPASA Tower 119.25 122.8		*Ground 121.8
NDB GZP <b>316</b>	Final Aph Crs <b>070°</b>	Minimum Alt No FAF	MDA(H) Refer to Minimums	Apt Elev 126'	
<b>MISSED APCH:</b> Turn RIGHT on 170° from NDB and climb to 4100', then climbing turn RIGHT to cross NDB at 7500' and hold. MAX 185 KT until inbound NDB. If unable to reach 7500' at NDB, intercept 360° from NDB to cross 6100', then climbing turn LEFT to cross NDB at 7500' and hold.					11,000 090° 270° 4000' 10,000 360° MSA GZP NDB
Alt Set: hPa Apt Elev: 5 hPa		Trans level: By ATC		Trans alt: 15000'	
Race track restricted to MAX 185 KT.					



CAT A & B:  
4 Min  
CAT C & D:  
3 Min

Lighting -  
Refer to  
Airport  
Chart



170°  
from  
GZP  
316  
↑

MAP at NDB

Standard

CIRCLE-TO-LAND

CAUTION: Not authorized  
North of airport

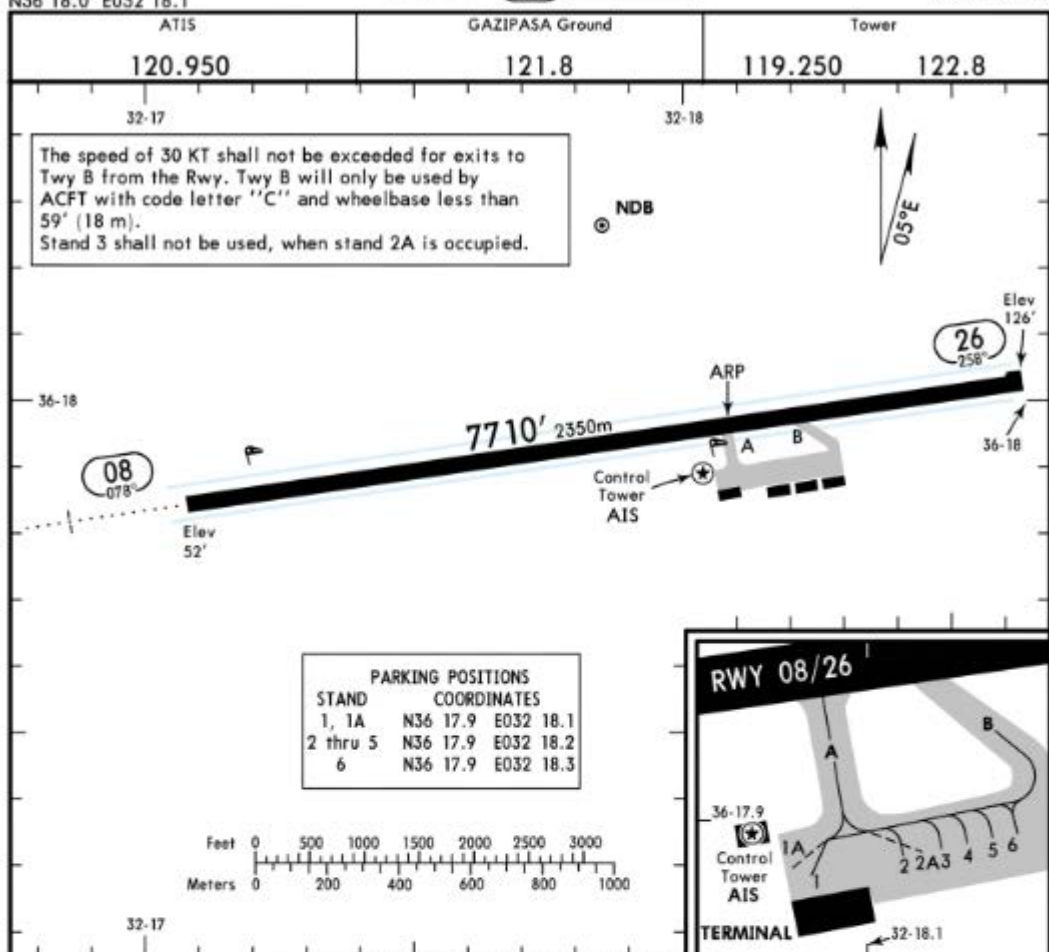
	Max Kts	MDA(H)	VIS
A	100	<b>2400'</b> (2274')	1500m
B	135	<b>2400'</b> (2274')	1600m
C	180	<b>2900'</b> (2774')	2400m
D	205	<b>4000'</b> (3874')	3600m

PANS OPS

**LTFG/GZP**  
 Apt Elev **126'**  
 N36 18.0 E032 18.1

**JEPPESEN**  
 25 JAN 19 **10-9** Eff 31 Jan

**GAZIPASA, TURKEY**  
**ALANYA**



The speed of 30 KT shall not be exceeded for exits to Twy B from the Rwy. Twy B will only be used by ACFT with code letter "C" and wheelbase less than 59' (18 m). Stand 3 shall not be used, when stand 2A is occupied.

STAND	COORDINATES
1, 1A	N36 17.9 E032 18.1
2 thru 5	N36 17.9 E032 18.2
6	N36 17.9 E032 18.3

**ADDITIONAL RUNWAY INFORMATION**

RWY	USABLE LENGTHS			WIDTH
	Threshold	Landing Beyond Glide Slope	TAKE-OFF	
08	HIRL (60m) CL (15m) ALS REIL SFL PAPI-L (3.0°)			148'
26	HIRL (60m) CL (15m)			45m

**Standard**

**TAKE-OFF**

	Low Visibility Take-off			USABLE LENGTHS		
	HIRL, CL & relevant RVR	RL, CL & relevant RVR	RL & CL	Day: RL & RCLM Night: RL or CL	Day: RL or RCLM Night: RL or CL	Adequate vis ref (Day only)
A						
B	TDZ, MID, RO	TDZ, MID, RO				
C	RVR 125m	RVR 150m	RVR 200m	RVR 300m	400m	500m
D						

CHANGES: Stand 6A withdrawn. Parking restriction note.

© JEPPESEN, 2011, 2019. ALL RIGHTS RESERVED.

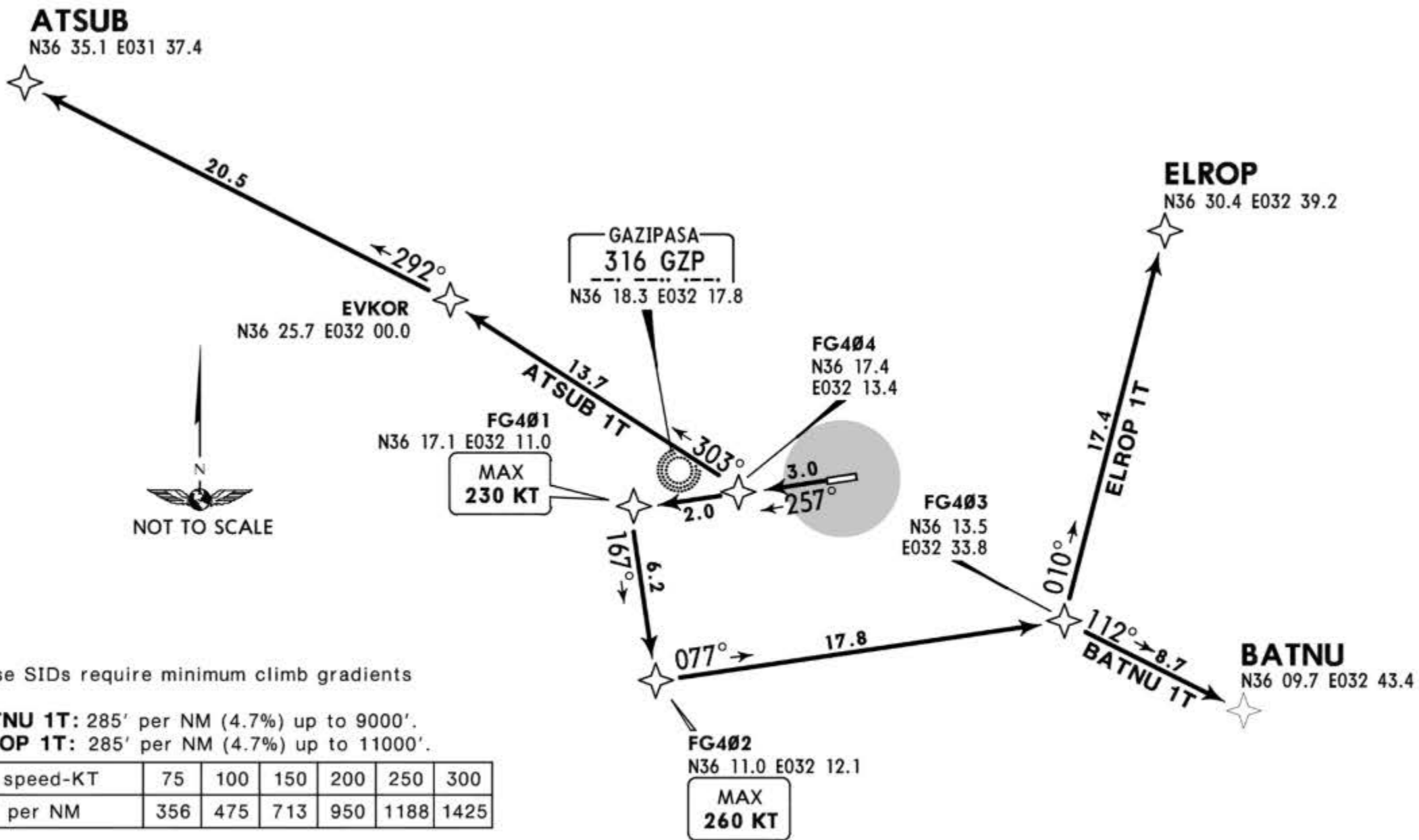


Apt Elev  
126'

Trans level: By ATC

Trans alt: 15000'

**ATSUB 1T [ATSUIT]**  
**BATNU 1T [BATN1T], ELROP 1T [ELRO1T]**  
**RWY 26 RNAV DEPARTURES**  
RNAV (GNSS)  
RNP-1 REQUIRED



These SIDs require minimum climb gradients of  
**BATNU 1T:** 285' per NM (4.7%) up to 9000'.  
**ELROP 1T:** 285' per NM (4.7%) up to 11000'.

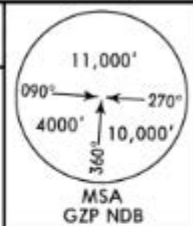
Gnd speed-KT	75	100	150	200	250	300
285' per NM	356	475	713	950	1188	1425

If unable to comply inform GAZIPASA Tower at first contact.

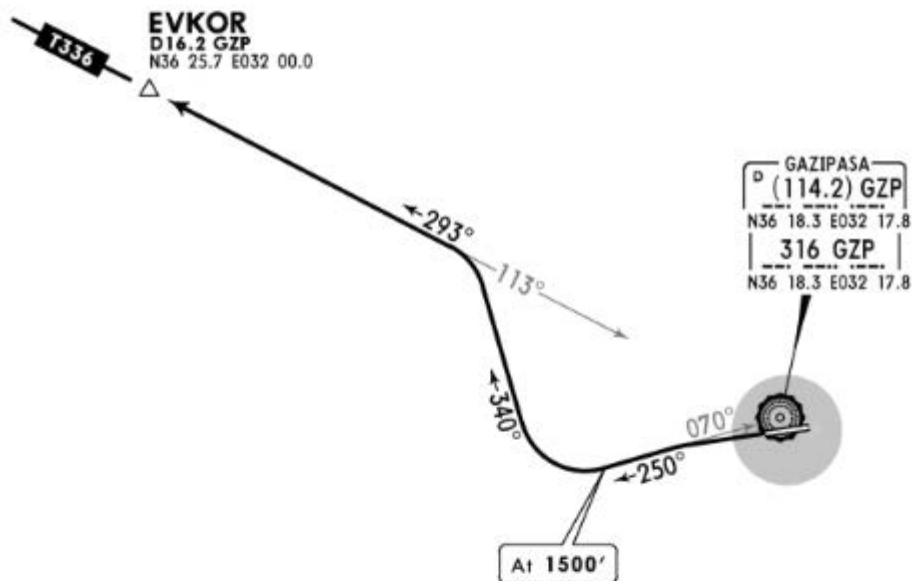
SID	ROUTING
<b>ATSUB 1T</b>	On 257° track to FG404, turn RIGHT to EVKOR, turn LEFT to ATSUB.
<b>BATNU 1T</b>	On 257° track to FG401, turn LEFT to FG402, turn LEFT to FG403, turn RIGHT to BATNU.
<b>ELROP 1T</b>	On 257° track to FG401, turn LEFT to FG402, turn LEFT to FG403, turn LEFT to ELROP.

Apt Elev  
126'

Trans level: By ATC Trans alt: 15000'



**EVKOR 1A [EVKO1A]  
RWY 26 DEPARTURE  
BASED ON GZP NDB**



**ROUTING**

Intercept 250° bearing from GZP NDB, at 1500' turn RIGHT, 340° track, intercept 293° bearing from GZP NDB to EVKOR, then join airway T-336.