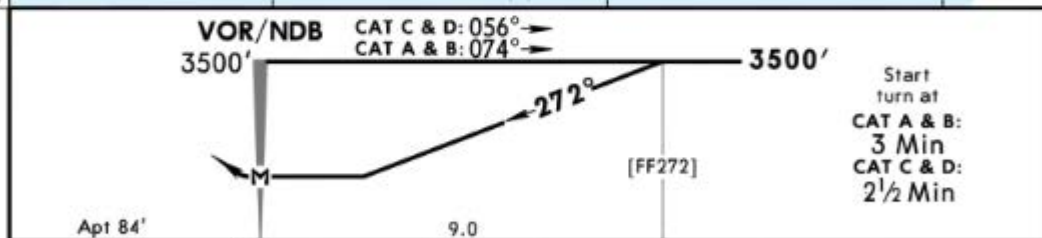
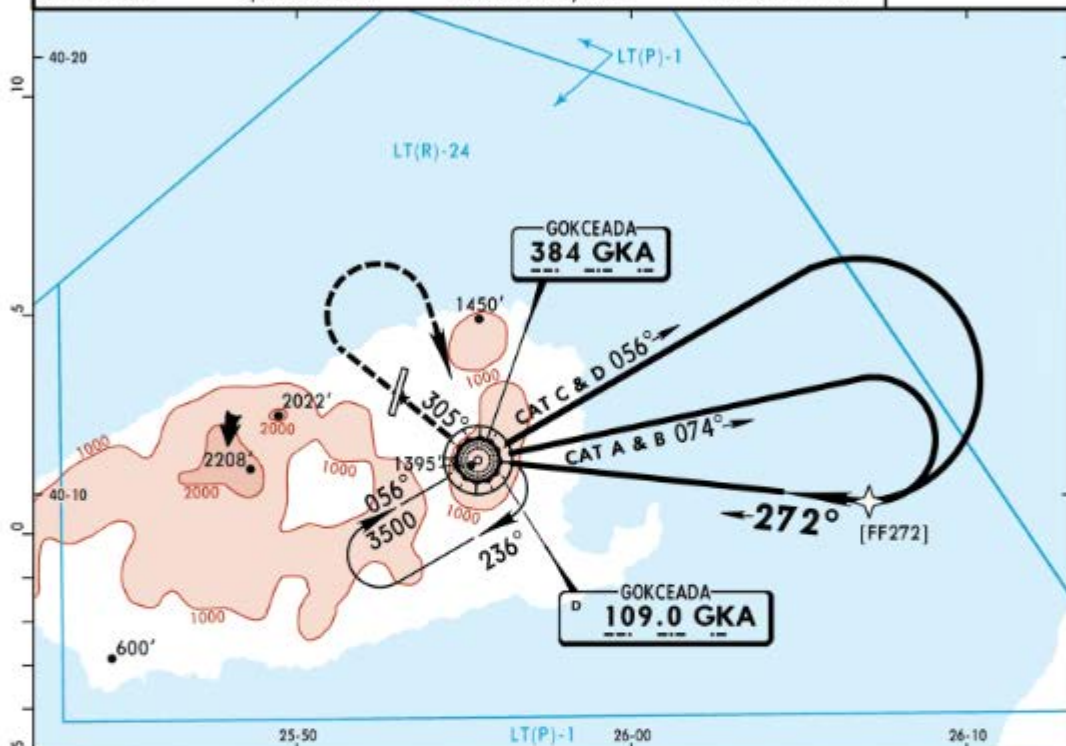


LTFK/GKD  
GOKCEADA

**JEPPESEN**  
7 JUN 19 (13-1) Eff 20 Jun

**GOKCEADA, TURKEY**  
VOR A or NDB A

*GOKCEADA Approach		*GOKCEADA Tower			*Ground	
118.125		118.125			121.9	
VOR GKA <b>109.0</b>	NDB GKA <b>384</b>	Final Apch Crs <b>272°</b>	No FAF	MDA(H) Refer to Minimums	Apt Elev 84'	
<p><b>MISSED APCH:</b> Climb on R-305 (305° from NDB) to 2600', then turn <b>RIGHT</b> climbing to 3500' to VOR/NDB and hold.</p>						<p>MSA GKA VOR/NDB</p>
Alt Set: hPa		Apt Elev: 3 hPa		Trans level: By ATC		



MAP at VOR/NDB				Lighting - Refer to Airport Chart	2600' on R-305	GKA 109.0 or 384	305° from GKA
Standard							

CIRCLE-TO-LAND

CAUTION: Not authorized West of airport due to high terrain.

PANS OPS	Max Kts	MDA(H)		VIS
		ft	m	
A	100	1800'	(1716')	1500m
B	135	1800'	(1716')	1600m
C	180	1900'	(1816')	2400m
D	205	1900'	(1816')	3600m

CHANGES: Apt elev. Minimums.

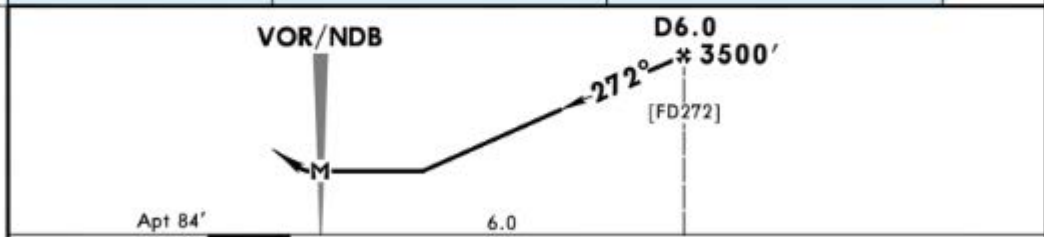
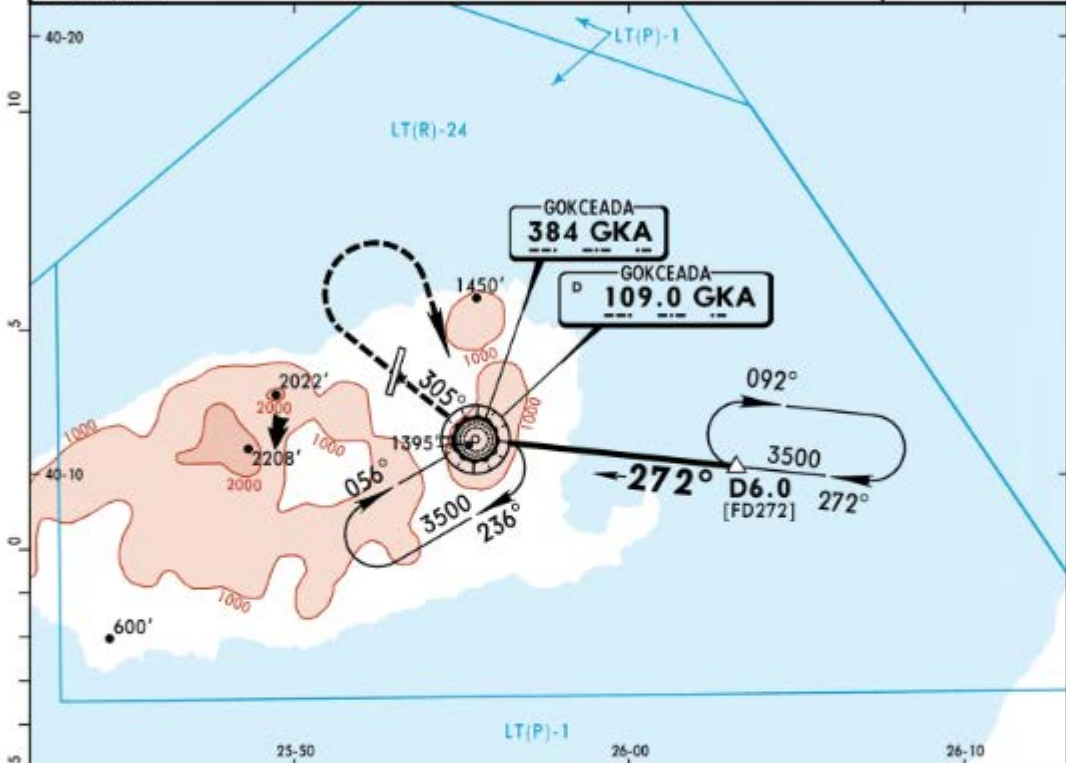
© JEPPESEN, 2012, 2019. ALL RIGHTS RESERVED.

LTFK/GKD  
GOKCEADA

JEPPESEN  
7 JUN 19 **13-2** Eff 20 Jun

GOKCEADA, TURKEY  
VOR B or NDB B

*GOKCEADA Approach		*GOKCEADA Tower			*Ground		
118.125		118.125			121.9		
VOR GKA <b>109.0</b>	NDB GKA <b>384</b>	Final Apch Crs <b>272°</b>	Minimum Alt <b>D6.0</b> <b>3500'</b> (3416')	MDA(H) Refer to Minimums	Apt Elev 84'		
<p><b>MISSED APCH:</b> Climb on R-305 (305° from NDB) to 2600', then turn <b>RIGHT</b> climbing to 3500' to VOR/NDB and hold.</p>						<p>MSA GKA VOR/NDB</p>	
Alt Set: hPa		Apt Elev: 3 hPa		Trans level: By ATC			Trans alt: 10000'
DME required.							



MAP at VOR/NDB	Lighting - Refer to Airport Chart	2600' on 109.0 or 384 from GKA	305° from GKA
		RT	R-305

**Standard** CIRCLE-TO-LAND

CAUTION: Not authorized West of airport due to high terrain.

	Max Kts	MDA(H)	VIS
A	100	<b>1800'</b> (1716')	1500m
B	135	<b>1800'</b> (1716')	1600m
C	180	<b>1900'</b> (1816')	2400m
D	205	<b>1900'</b> (1816')	3600m

CHANGES: Apt elev. Minimums.

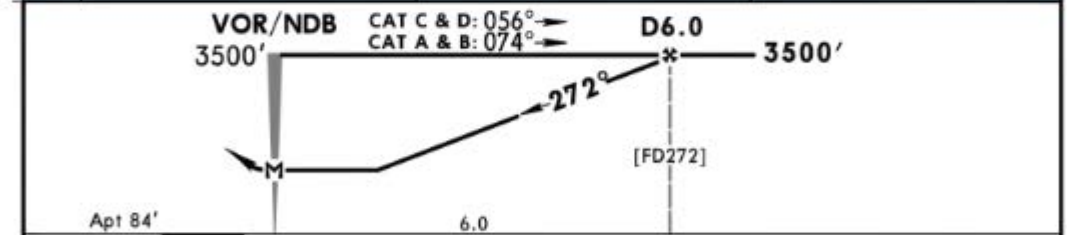
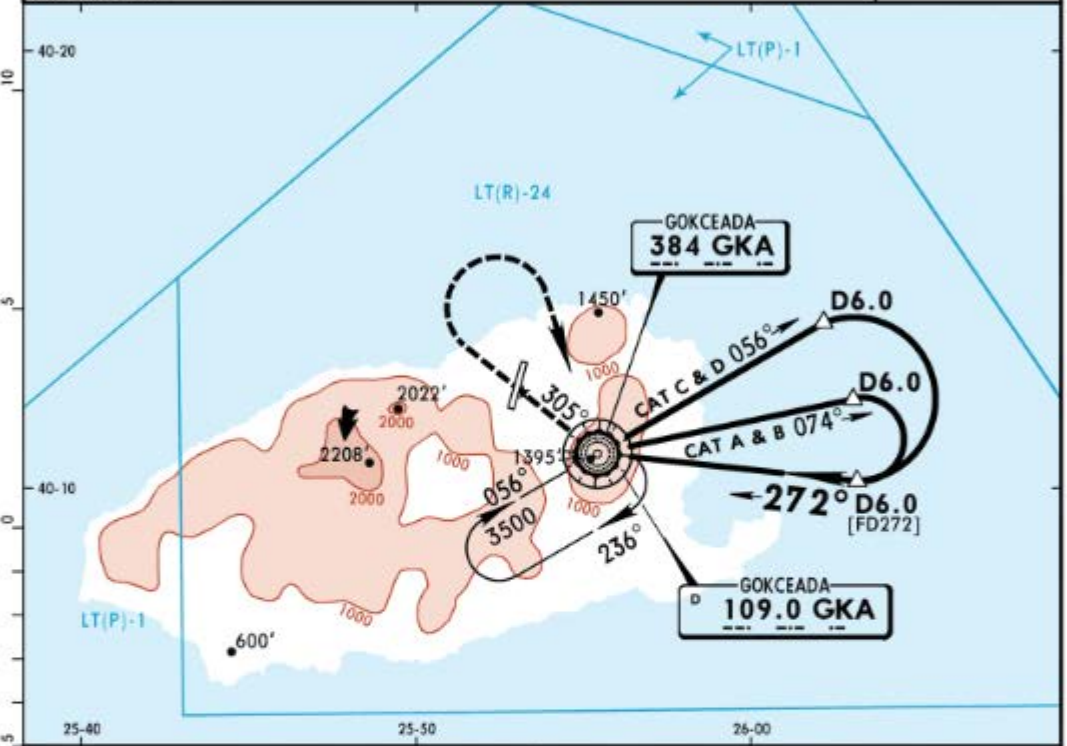
© JEPPESEN, 2012, 2019. ALL RIGHTS RESERVED.

LTFK/GKD  
GOKCEADA

JEPPESEN  
7 JUN 19 **13-3** Eff 20 Jun

GOKCEADA, TURKEY  
VOR C or NDB C

*GOKCEADA Approach		*GOKCEADA Tower			*Ground		
118.125		118.125			121.9		
VOR GKA <b>109.0</b>	NDB GKA <b>384</b>	Final Apch Crs <b>272°</b>	Minimum Alt <b>D6.0</b> 3500' (3416')	MDA(H) Refer to Minimums	Apt Elev 84'		
<b>MISSED APCH:</b> Climb on R-305 (305° from NDB) to 2600', then turn <b>RIGHT</b> climbing to 3500' to VOR/NDB and hold.						<p>MSA GKA VOR/NDB</p>	
Alt Set: hPa		Apt Elev: 3 hPa		Trans level: By ATC			Trans alt: 10000'
DME required.							



MAP at VOR/NDB				Lighting - Refer to Airport Chart	2600' on R-305	GKA 109.0	305° from GKA 384
<b>Standard</b>				CIRCLE-TO-LAND			

CAUTION: Not authorized West of airport due to high terrain.

PANS OPS	Max Kts	MDA(H)	
		ft	m
A	100	1800' (1716')	1500m
B	135	1800' (1716')	1600m
C	180	1900' (1816')	2400m
D	205	1900' (1816')	3600m

CHANGES: Apt elev. Minimums.

© JEPPESEN, 2012, 2019. ALL RIGHTS RESERVED.

LTFK/GKD

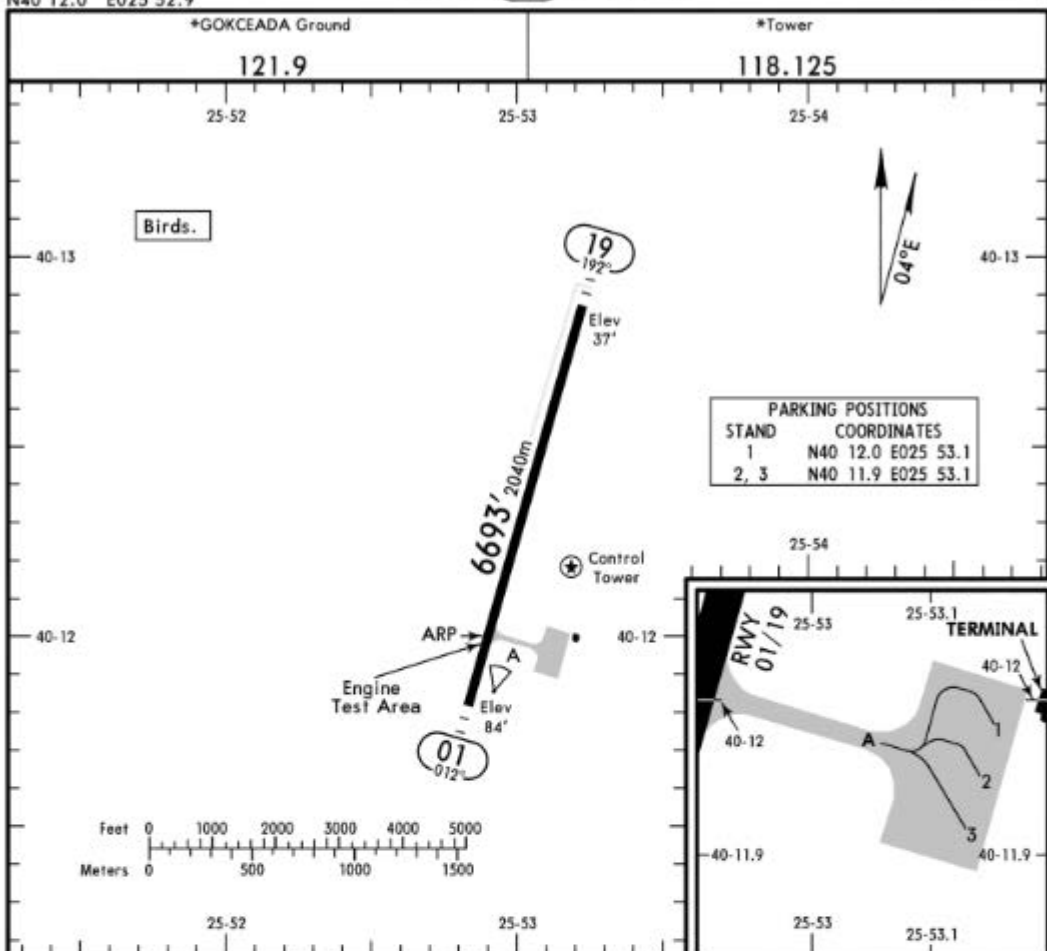
Ap1 Elev 84'  
N40 12.0 E025 52.9

JEPPESEN

7 JUN 19 (10-9) Eff 20 Jun

GOKCEADA, TURKEY

GOKCEADA



ADDITIONAL RUNWAY INFORMATION

RWY	USABLE LENGTHS				WIDTH
	LANDING BEYOND		TAKE-OFF		
	Threshold	Glide Slope			
01	HIRL (60m) HIALS REIL	RVR			148'
19	HIRL (60m) HIALS REIL PAPI-L (angle 3.0°)				45m

Standard

TAKE-OFF

	Low Visibility Take-off	Day: RL or RCLM Night: RL	Adequate vis ref (Day only)
A		Day: RL or RCLM Night: RL	
B			
C	RVR 300m	400m	500m
D			